

PHILIPS

User manual
產品手冊

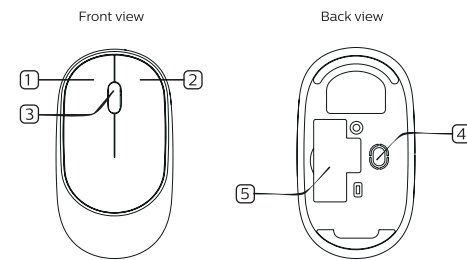
SPK7314

Wireless mouse
無線滑鼠

User manual
English
產品手冊
中文



Functional overview



- ① Left key
- ② Right key
- ③ 3D wheel
- ④ Optical sensor
- ⑤ Battery compartment

1

Product description

- Streamline curve, simple and beautiful.
- Rubber roller, soft touch.
- Ergonomic appearance design, comfortable hand, reduce hand fatigue.
- Accurate positioning, maximum acceleration: 10G.
- Highest return: 250Hz.

Install

Plug and play
The wireless mouse supports plug and play. The computer will detect the mouse automatically after connecting.

Specification

- Connectivity: wireless 2.4GHz
- Working distance: 10 meters
- Number of buttons: 3
- Lifespan: 3 million keystrokes
- Button strength: 65+/-5g
- DPI: 1200
- Power supply: one AA battery
- Product weight: 49.5±5g

2

- Product size: 108 (L) x 60 (W) x 26 (H) ± 0.5 mm
- Rated voltage and current: DC 1.5V / <15mA
- Operating platform: Windows®XP/linux/mac/Vista /7/8/10

Package contents

- Wireless mouse
- USB receiver
- AA alkaline battery
- Instruction book
- Warranty card
- Product support card

Product certification



This device complies with Part 15 of the FCC Rules. Operation is subject to the following two conditions: (1) This device may not cause harmful interference, and

(2) This device must accept any interference received, including interference that may cause undesired operation.

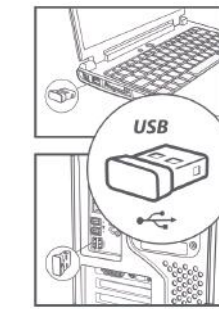
Warning: Changes or modifications not expressly approved by the party responsible for compliance could void the user's authority to operate the equipment.

3

NOTE: This equipment has been tested and found to comply with the limits for a Class B digital device, pursuant to Part 15 of the FCC Rules. These limits are designed to provide reasonable protection against harmful interference in a residential installation. This equipment generates uses and can radiate radio frequency energy and, if not installed and used in accordance with the instructions, may cause harmful interference to radio communications. However, there is no guarantee that interference will not occur in a particular installation. If this equipment does cause harmful interference to radio or television reception, which can be determined by turning the equipment off and on, the user is encouraged to try to correct the interference by one or more of the following measures: Reorient or relocate the receiving antenna. Increase the separation between the equipment and receiver. Connect the equipment into an outlet on a circuit different from that to which the receiver is connected. Consult the dealer or an experienced radio/TV technician for help.

4

SR002 wireless receiver instruction

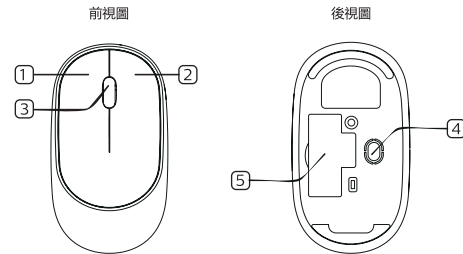


Device: empty computer USB port.

Plug and play, no need to install the driver.

5

功能概述



- ① 左鍵
- ② 右鍵
- ③ 3D滾輪
- ④ 光學傳感器
- ⑤ 電池倉

6

產品描述

- 流線型曲線，簡潔美觀。
- 橡膠滾輪設計，觸感柔軟。
- 人體工學外觀設計，手感舒適，減少手部疲勞。
- 定位精準，最高加速度：10G。
- 最高回報率：250Hz。

安裝

即插即用
無線滑鼠支持即插即用，與USB連接之後，電腦會自動偵測到滑鼠，無需驅動或者CD。

7

規格

- 傳輸方式：無線2.4GHz
- 工作距離：10米
- 按鍵數：3
- 按鍵壽命：300萬次
- 按鍵力度：65+/-5g
- DPI: 1200
- 供電方式：一節AA電池
- 產品重量：49.5±5g
- 產品尺寸：108(L)×60(W)×26(H)±0.5mm
- 額定電壓電流：DC 1.5V / <15mA
- 操作平台：Windows®XP/linux/mac/Vista/7/8/10

包裝內容

- 無線滑鼠
- USB接收器
- AA鹼性電池
- 說明書
- 保修卡
- 售後服務卡

8

產品認證



FCC認證聲明：該裝置符合FCC規則第15部分。運作須符合以下兩項條件：

(1)本裝置不得造成有害干擾
(2)本設備必須接受接收到的任何干擾，包括可能導致不希望的操作的干擾。

警告：未經遵守方明確批准的變更或修改可能會使用戶喪失操作設備的權力。
注：該設備已經過測試，符合FCC規則第15部分對B類數字設備的限制。

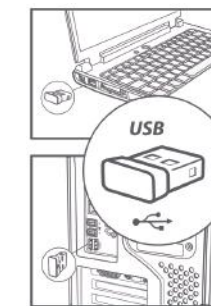
這些限制旨在提供合理的保護，防止有害的干擾，在住宅安裝。本設備產生使用並能輻射射頻能量，如不按照說明安裝和使用，可能對無線電通信造成有害干擾。但是，不能保證在特定的安裝中不會發生干擾。如果該設備確實對無線電或電視接收造成有害干擾，可通過關閉或打開設備來確定，則鼓勵用戶採取下列一項或多項措施來糾正干擾：

重新定位或重新定位接收天線。
增加設備和接收器之間的距離。
將設備連接到與所連接的接收器不同的電路上的插座上。
向經銷商或有經驗的廣播/電視技術人員尋求幫助。

射頻警告聲明：
該裝置已經過評估，以滿足一般射頻暴露要求。該裝置可在不受限制的便攜式暴露條件下使用。

9

SR002接收器使用說明



設備：空置電腦USB介面
即插即用，無需安裝驅動

10



© 2018 Koninklijke Philips N.V. All rights reserved.
Specifications are subject to change without notice.
Philips and the Philips Shield Emblem are registered trademarks of Koninklijke Philips N.V. and are used under license from Koninklijke Philips N.V.
Made in China
Through the following website, register your product in order to get support:
www.philips.com/welcome
Eduction Standard: GB/T26245-2010
Manufacturer: Dongguan Supei Electronics Co., Ltd.
Address: 161, Huangpu Street, Cuiqingfeng Village, Huanggang Town, Dongguan City, Guangdong, China

©2018 Koninklijke Philips N.V. 保留所有權利。
規格如有更改，恕不另行通知。
Philips 和 Philips 盾形商標是 Koninklijke Philips N.V. 的註冊商標，
且經授權用於此處之產品。
中國製造
通過以下網站，註冊您的產品以獲得支持
www.philips.com/welcome
執行標準：GB / T26245-2010
製造商：東莞市蘇配電子有限公司
地址：中國廣東省東莞市黃江鎮黃岡村華地路