



FCC WARNING

This device complies with part 15 of the FCC Rules. Operation is subject to the following two conditions: (1) this device may not cause harmful interference, and (2) this device must accept any interference received, including interference that may cause undesired operation.

Any changes or modifications not expressly approved by the party responsible for compliance could void the user's authority to operate the equipment.

NOTE: This equipment has been tested and found to comply with the limits for a Class B digital device, pursuant to Part 15 of the FCC Rules. These limits are designed to provide reasonable protection against harmful interference in a residential installation. This equipment generates, uses and can radiate radio frequency energy and, if not installed and used in accordance with the instructions, may cause harmful interference to radio communications. However, there is no guarantee that interference will not occur in a particular installation.

If this equipment does cause harmful interference to radio or television reception, which can be determined by turning the equipment off and on, the user is encouraged to try to correct the interference by one or more of the following measures:

- Reorient or relocate the receiving antenna.
- Increase the separation between the equipment and receiver.
- Connect the equipment into an outlet on a circuit different from that to which the receiver is connected.
- Consult the dealer or an experienced radio/TV technician for help.

To maintain compliance with FCC's RF Exposure guidelines, This equipment should be installed and operated with minimum distance between 20cm the radiator your body: Use only the supplied antenna.

FCC ID: 2AP56- HD03-1080P-P

Customer Service:

info-us@sv3c.com



WIFI CAMERA QUICK START-IPC360 APP USER MANUAL (P Series)

Model:HD03-1080P-P



For more detailed Set up Manual, please refer to our website- www.sv3c.com to download

IPC360 Manual

1.Download App and Register an Account

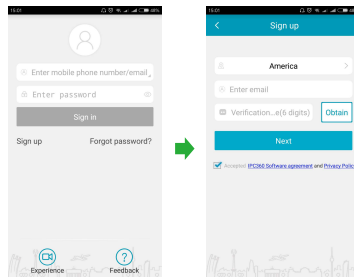
(1)Search"IPC360"app from App Store for Iphone,from Google Play for Android Phone or scan the bellow QR code to download.



IPC360

(2)Choose correct country and use your email address to sign up.

(3)Tap on "Obtain" to receive a verification code in your mailbox and enter it to finish the registration. (**check your mail spam if you cannot find the code**).



01 For more detailed Set up Manual, please refer to our website- www.sv3c.com to download

02 For more detailed Set up Manual, please refer to our website- www.sv3c.com to download

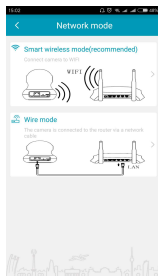
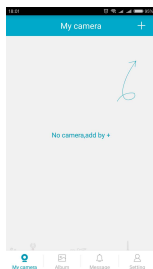
2.Adding Camera (Only supports 2.4G Network)

Power on the camera and keep it under the same LAN your phone is connected.

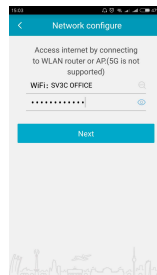
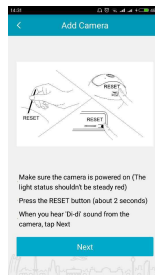
Please choose adding mode according to actual conditions.

(1)Wireless Mode——Connect via Wi-Fi.

①Tap “+” to add camera and choose wireless mode, press reset button and you will hear “Di-Di” sound, tap “next” to configure Wi-Fi and enter password.

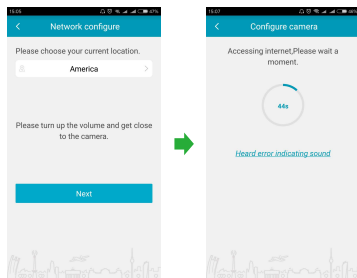


03 For more detailed Set up Manual, please refer to our website- www.sv3c.com to download

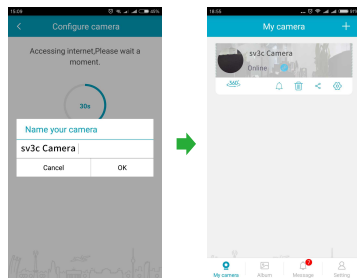


04 For more detailed Set up Manual, please refer to our website- www.sv3c.com to download

② Choose the correct country (auto positioned by the system) and tap next. Turn up phone volume and get close to camera until you hear "Dingdong" sound.



③ Wait a second to hear "Camera ready" and name your camera in the pop up box. Then camera will be added successfully.

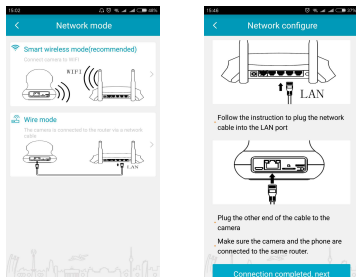


Please make sure that WIFI name and password can not include special characters such as %#\$@_+ and blank, otherwise it will shows "wrong password". If it fails to connect, please power it off and reset the camera to have a try again.

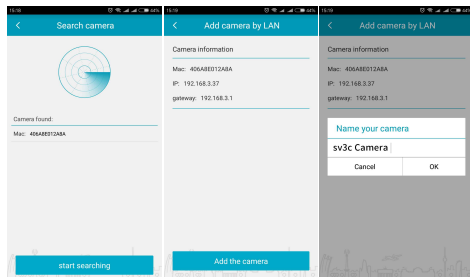
(2)Wired Mode——Connect via Ethernet Cable.

(Only available for the model with Ethernet interface)

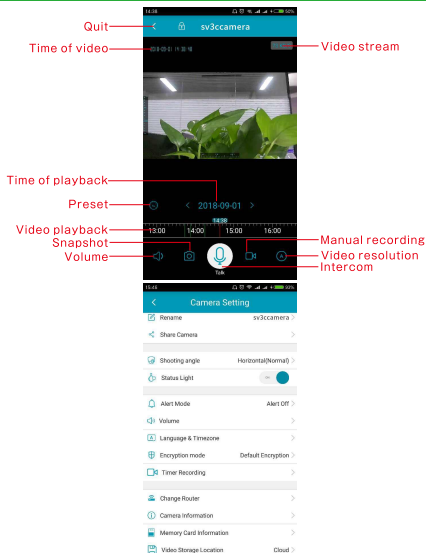
①Select wire mode and use an Ethernet cable to connect camera to router.



②Click the founded mac address and "add the device". Then you can hear "Dingdong" sound and "camera ready" voice, see green light and pop up box.



3.APP Illustration



Rename: Change name of the camera.

Share camera: Share the camera to max 5 other registered accounts.

Shooting angle: Direction to place the camera.

Indicator LED: Choose to turn on/off the indicating light.

Alert mode: SD card should be inserted to set it up.

Volume: Adjust volume of intercom, camera, and microphone.

Languages & timezone: Choose camera timezone. Language is synchronized with mobile phone settings.

Encryption settings: Set up your encryption mode here.

Change router: Reset the camera if you need to change router and then re-add.

Camera information: Detailed info about the added camera.

Memory card information: Check and format the inserted SD card here.

Video Storage Location: SD card or cloud.

Any question about the camera, please feel free to send email to info-us@sv3c.com