



www.sv3c.com

Customer Service:

US Email address: info-us@sv3c.com

UK Email address: info-uk@sv3c.com



UK
CA



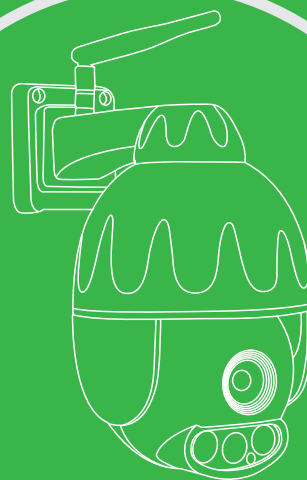
Company name: HAIWA CONSULTING LTD

Address: 113, Gloucester Place, Fly,
London, England, W1U 6JR



QUICK START GUIDE FOR SV3C WI-FI CAMERA

HX Series
2.4G/5G WiFi



Content

About Camera -----	01
Connect the Camera -----	02
Add Camera by Scanning QR Code -----	03
Add Camera by Network Cable Connection -----	07
Add Camera by AP Hotspot Wireless -----	10
Two Ways to Share the Camera -----	12
Set Micro SD Card Recording -----	14
View on PC -----	17
Reboot and Restore Factory Setting -----	20
More Info -----	20

1. About Camera

1.1 Product should contain:

IP Camera * 1	Power adapter * 1
User manual * 1	Network cable * 1
WiFi antenna * 1	Screws bag * 1

1.2 Product interface



1.3 How to fit Waterproof lid.



2. Connect the Camera

2.1 Plug in power adapter.



2.2 Power on the camera, it needs about one minute self checking and after that starts working.



02 For more detailed Set up Manual, please refer to our website- www.sv3c.com to download

3. Add Camera by Scanning QR Code

3.1 Download the app by searching for “Camhipro” APP from Google Play & APP Store, or Scanning the below QR code to download the “Camhipro” APP.



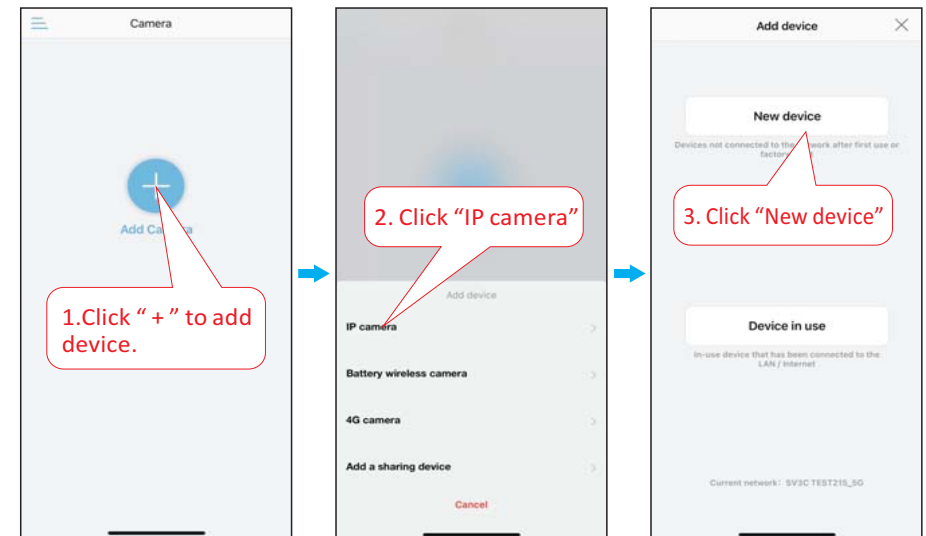
Android



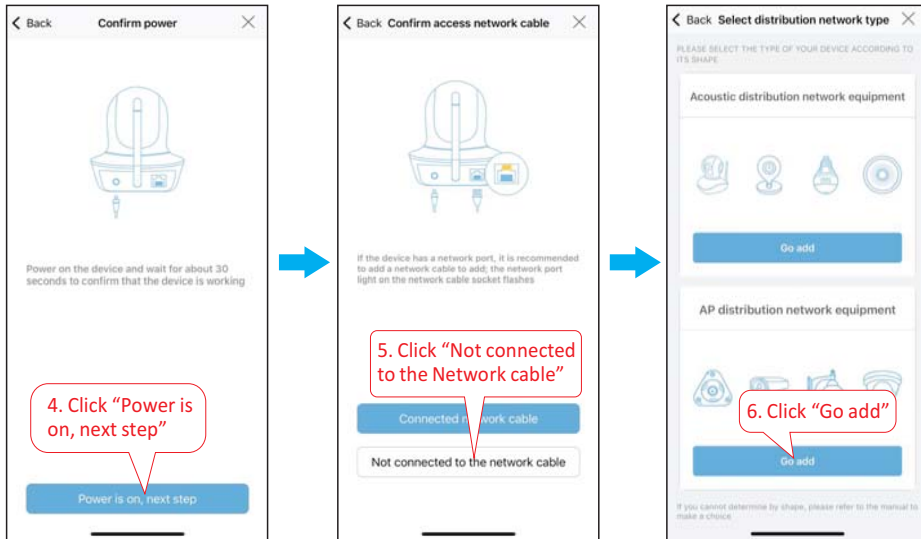
IOS

3.2 Add Camera

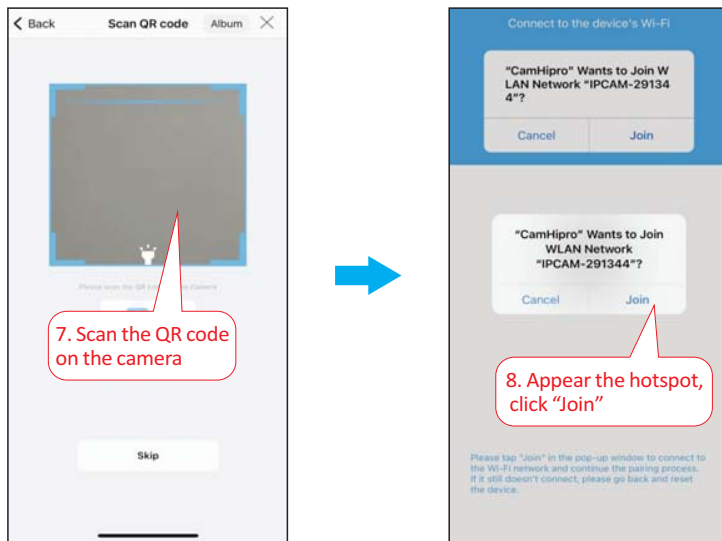
Before adding the camera, please long press the reset button about 5-15 seconds until the camera make prompt sound, the camera restores to default settings and restarts.



03 For more detailed Set up Manual, please refer to our website- www.sv3c.com to download



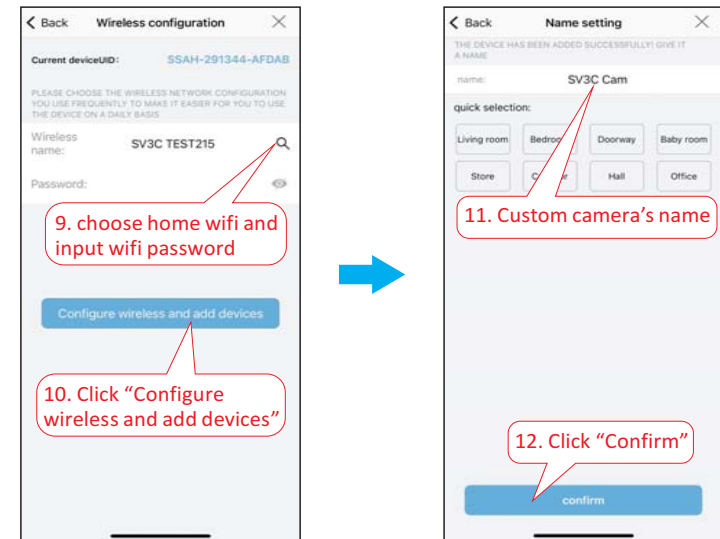
The camera is pasted with a QR code, use APP to scan QR code on the camera directly , the camera's hotspot will pop up and join it.



04 For more detailed Set up Manual, please refer to our website- www.sv3c.com to download

Choose home wifi, enter wifi password and wait for network configuration.

Note: Please confirm enter the correct password, or the connection will fail.



05 For more detailed Set up Manual, please refer to our website- www.sv3c.com to download

3.3 View Camera



Note:

- 1, WIFI Name (SSID) can not include special characters such as @ # \$ % & blank etc
- 2, WIFI Password: length should be within 8-31 bits and no special characters as well
- 3, Dual Band WIFI router: Some models only support 2.4ghz wifi, if you are using a dual band WIFI router, please either disable 5ghz or set the WIFI name be distinguishable for 2.4ghz and 5ghz so you can choose different WIFI for different devices.
- 4, If you can not set up camera successfully by scanning QR code, please refer to "Add Camera via Network Cable Connection" on the next page.

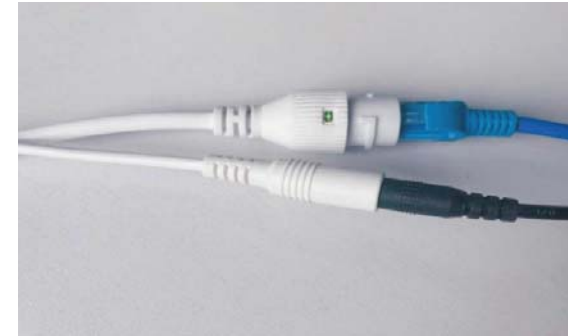
US Email address: info-us@sv3c.com

UK Email address: info-uk@sv3c.com

06 For more detailed Set up Manual, please refer to our website- www.sv3c.com to download

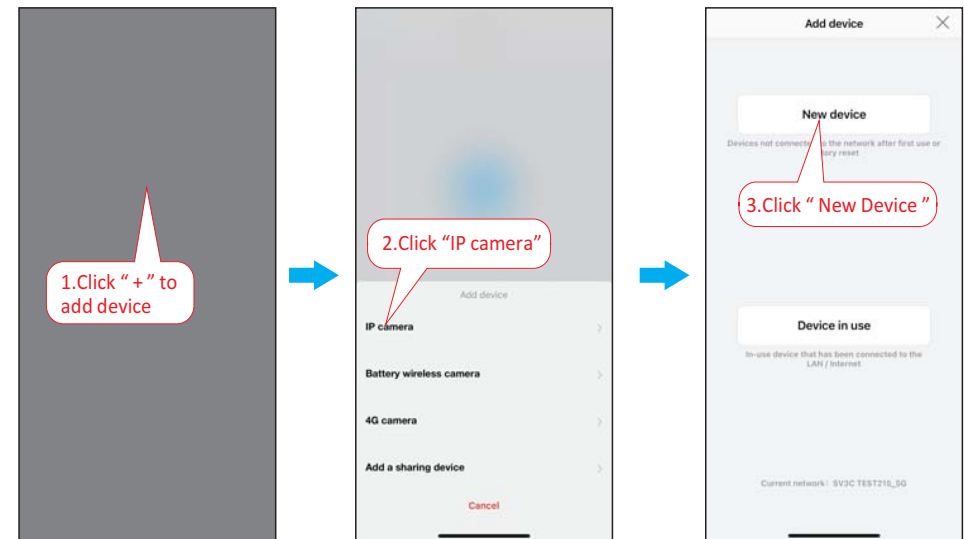
4.Add Camera by Network Cable Connection

4.1 Connect Lan cable and plug in power adapter to power on the camera, it needs about 1minute to self checking and then start working.

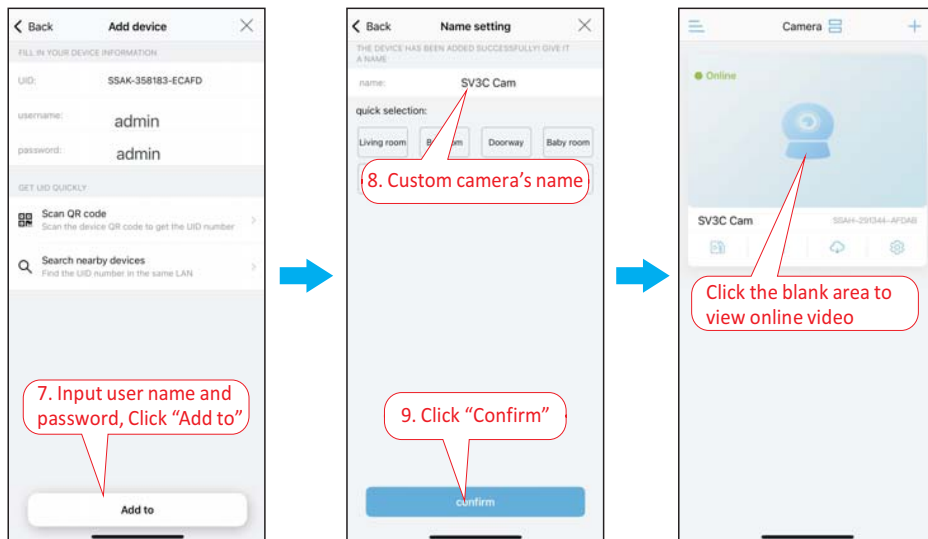
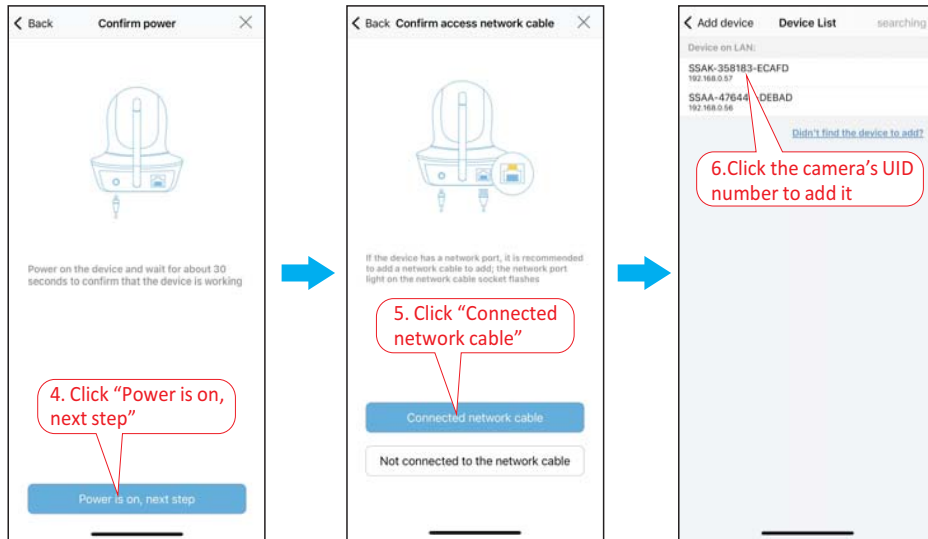


4.2 Add camera

Before adding the camera, please confirm your phone has connected wifi.



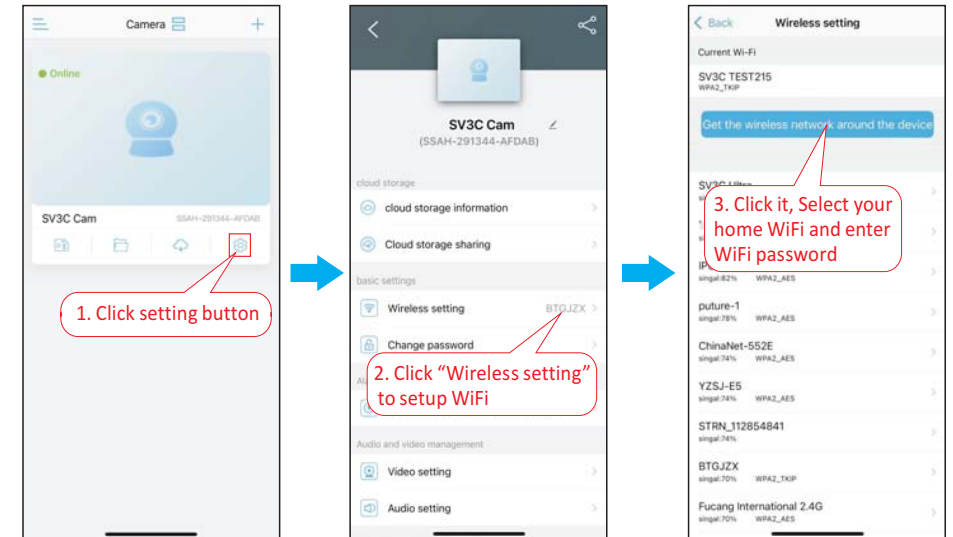
07 For more detailed Set up Manual, please refer to our website- www.sv3c.com to download



08 For more detailed Set up Manual, please refer to our website- www.sv3c.com to download

4.3 WI-FI Setting

Note: After entering wifi password and disconnect the network cable, camera can work wirelessly.



09 For more detailed Set up Manual, please refer to our website- www.sv3c.com to download

5.Add Camera by AP Hotspot Wireless

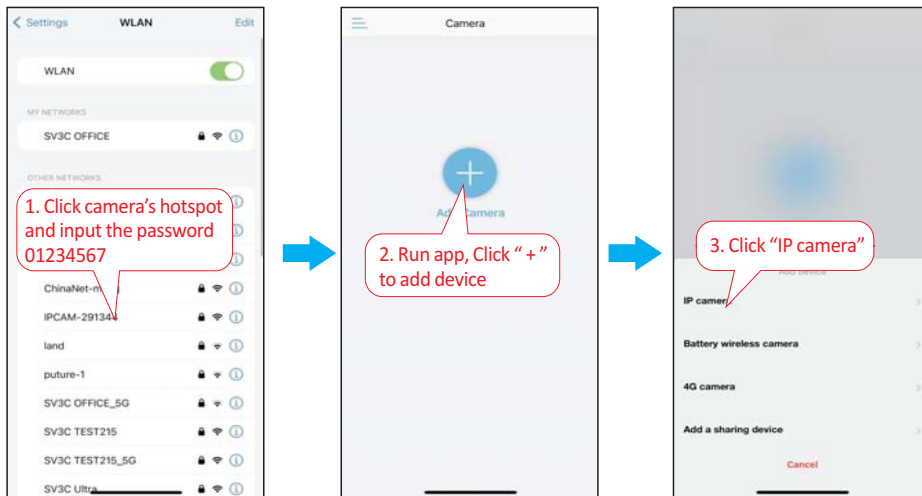
AP Mode WiFi Hotspot Connection

When there is no network in the usage environment , please use AP mode to connect and setup the camera as following:

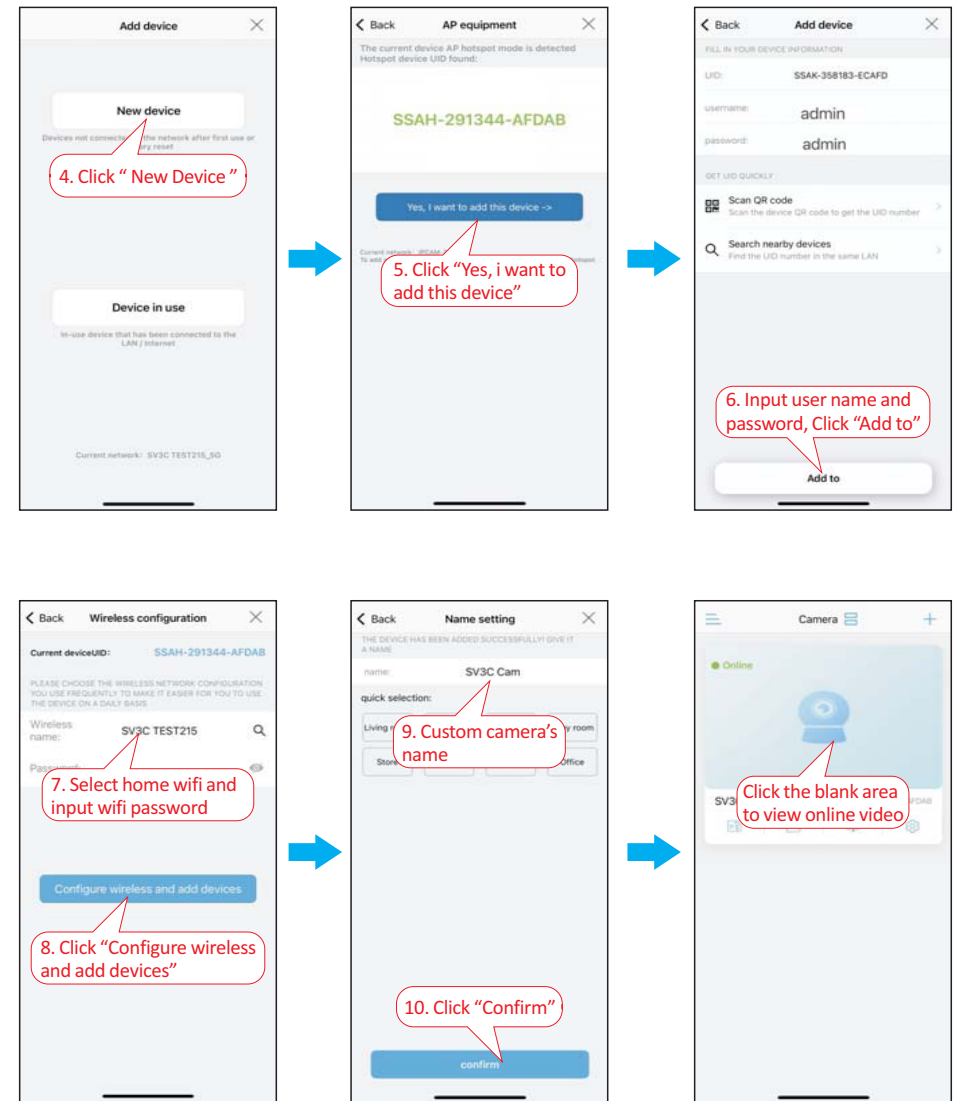
1, please supply power for the camera, DO NOT connect network cable.

2, reset camera: Long press the reset button which is next to the power port for 5~15 seconds , then the camera will start to reset.

3, please wait about 1 minute and turn on phone settings---find “WLAN”setting, find Camera’s SSID in AP Mode is in a format: **IPCAM-XXXXXX**. Please add the camera via AP mode as below.
(Default password: **01234567**)



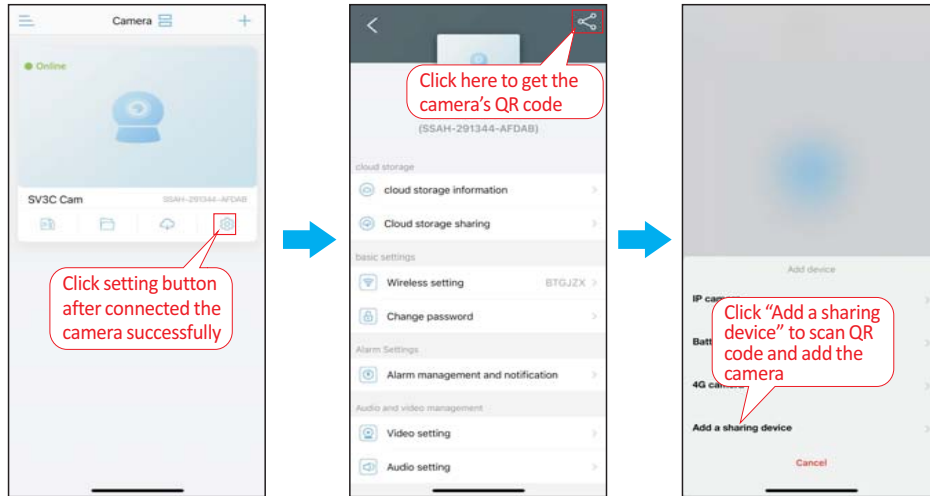
10 For more detailed Set up Manual, please refer to our website- www.sv3c.com to download



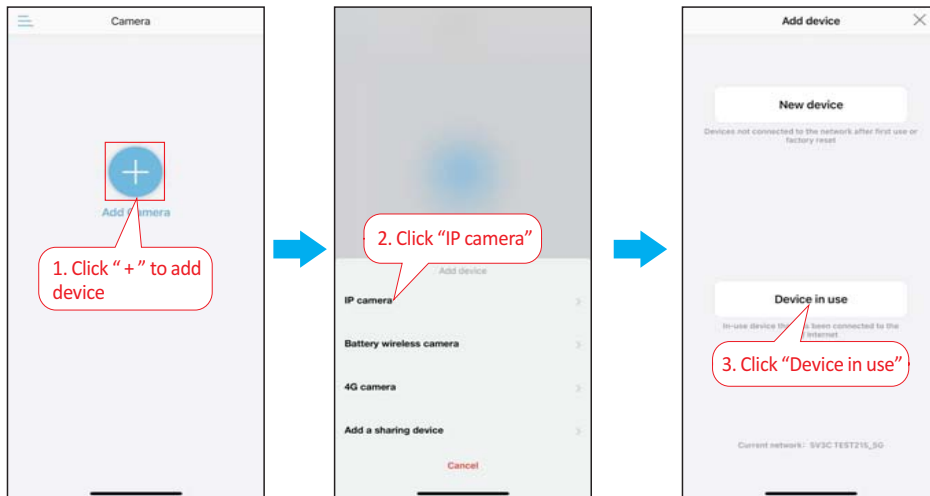
11 For more detailed Set up Manual, please refer to our website- www.sv3c.com to download

6.Two Ways to Share the Camera

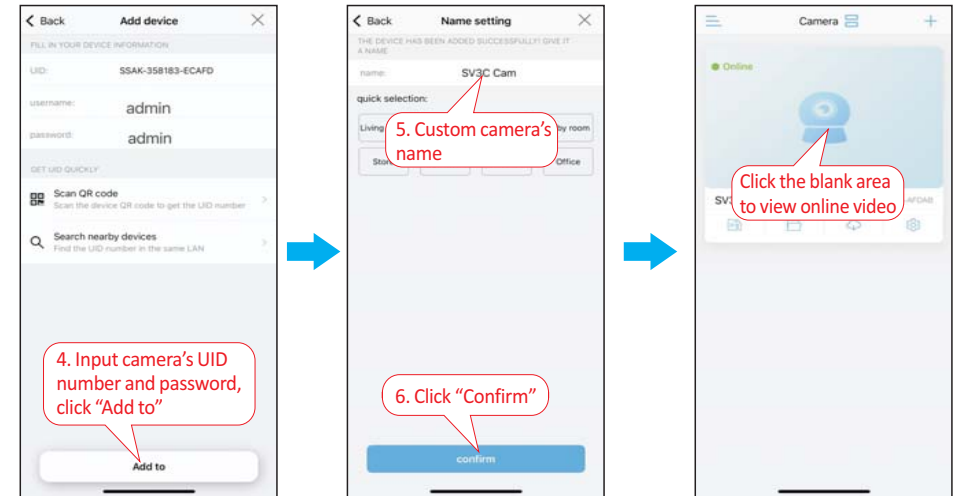
6.1 Click “Add a sharing device” to scan camera’s QR code, then you can add the camera on a different device.



6.2 Manually input the camera’s UID and password on the different phone or computer.



12 For more detailed Set up Manual, please refer to our website- www.sv3c.com to download

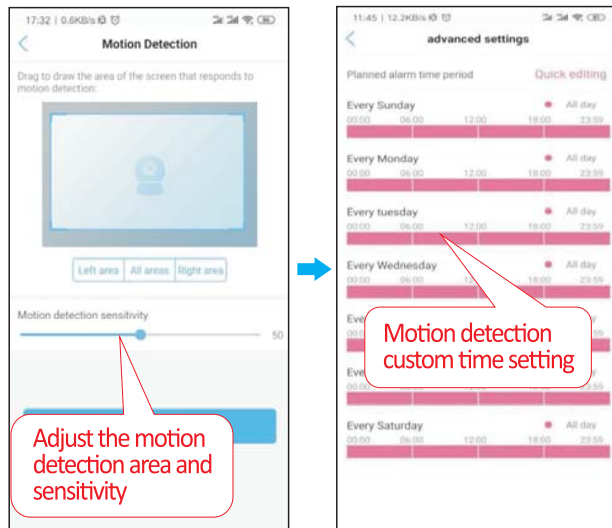
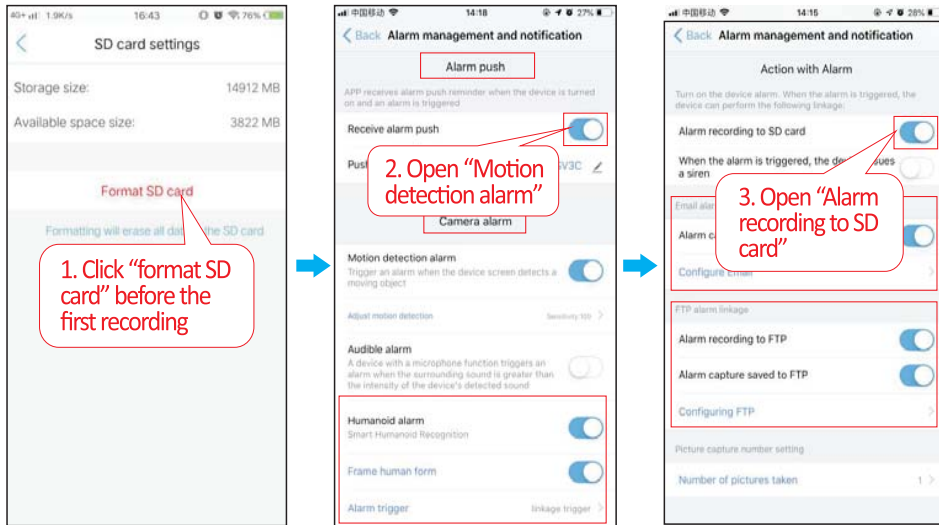


Note: The camera’s UID number format is like “ **UUUU-123456-ABCDE**”, and the default user name and password are both “ **admin**”. If you have changed the password, please use the newest password to login in.

13 For more detailed Set up Manual, please refer to our website- www.sv3c.com to download

7.Set Micro SD Card Recording

7.1 SD Card Setting and Alarm Setting



14 For more detailed Set up Manual, please refer to our website- www.sv3c.com to download

1. Alarm push: Enable “Receive alarm push” if you need text notification.

2. Humanoid Alarm/AI: Please turn on “Motion detection alarm”, “Humanoid Alarm”.

Linkage trigger: This function is triggered only when the camera detects human form and is moving.

Alone Linkage: Can be triggered by People or other objects moving.

3.Action with Alarm:

If you need motion detection recordings, enable “Alarm recording to SD card” after format the SD card .

If you need Email alert with pictures, please enable “Alarm capture sent to Email” , click “Configure Email” to complete Email settings, for more detailed settings, please refer to the instruction on SV3C website or contact SV3C customer service.

If you need to save motion detection recordings and pictures to FTP server, please enable “Alarm recording to FTP” and “Alarm capture saved to FTP”, click “Configure FTP” to complete FTP settings, please refer to the FTP instruction on SV3C website.

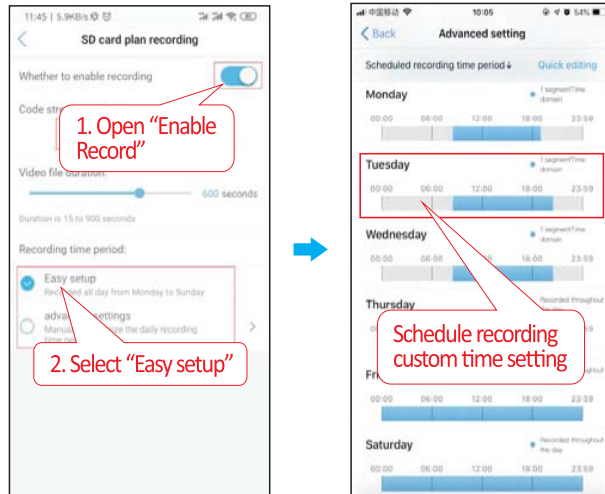
4.Adjust motion detection: Enable “Motion detection alarm” to make motion detection work.

Click “Adjust motion detection” to adjust the detection area and sensitivity. Drag the frame to change the motion detection zone. You can adjust the sensitivity from 1 to 50, 1 is the lowest setting. Select “Easy setup”, if you need the motion detection work all days. Click “advanced” button to set motion detection schedule for the camera.

5.Motion detection alarm recording is recommended when the Micro SD card is small.

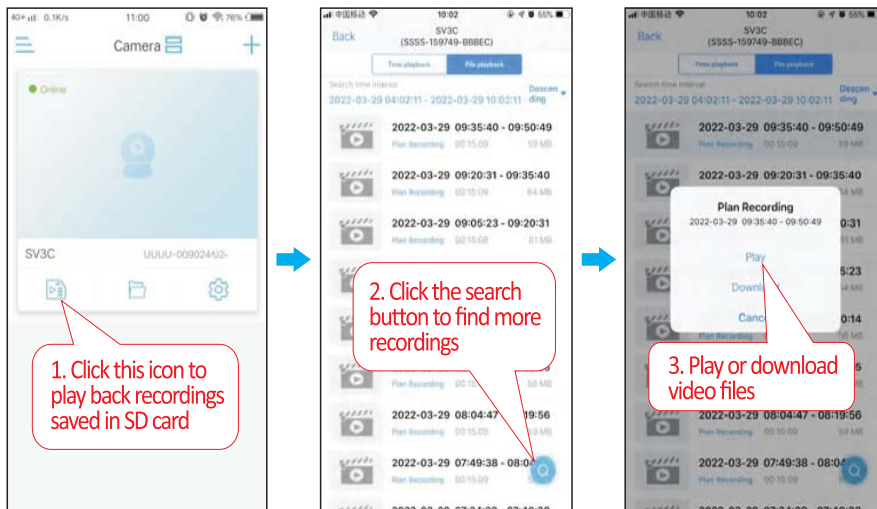
15 For more detailed Set up Manual, please refer to our website- www.sv3c.com to download

7.2 Schedule Recording Setting



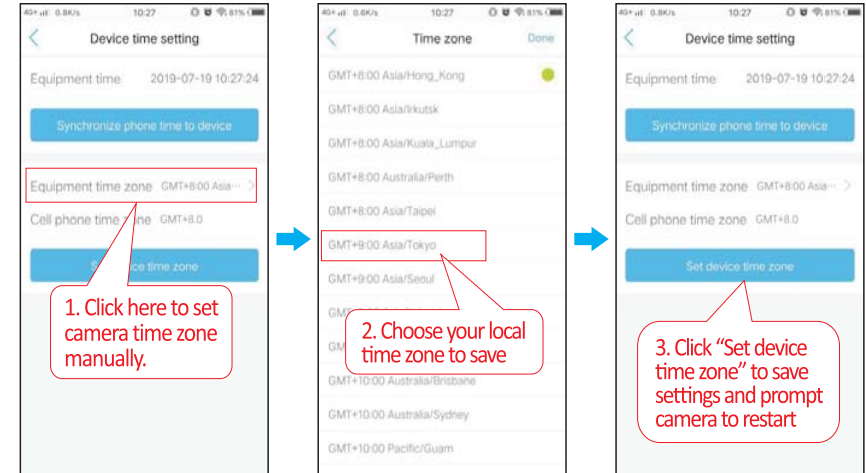
If you select “Easy setup”, the camera will record for 7/24 all days. Please click “advanced settings” to set recording schedule for the camera.

7.3 Playback Record



16 For more detailed Set up Manual, please refer to our website- www.sv3c.com to download

7.4 Set Camera Time Zone



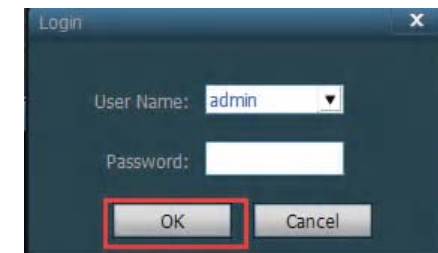
Note: When your time is DST(daylight saving time), please turn on DST button, otherwise the recording time will be incorrect.

8.View on PC

8.1 Software Login

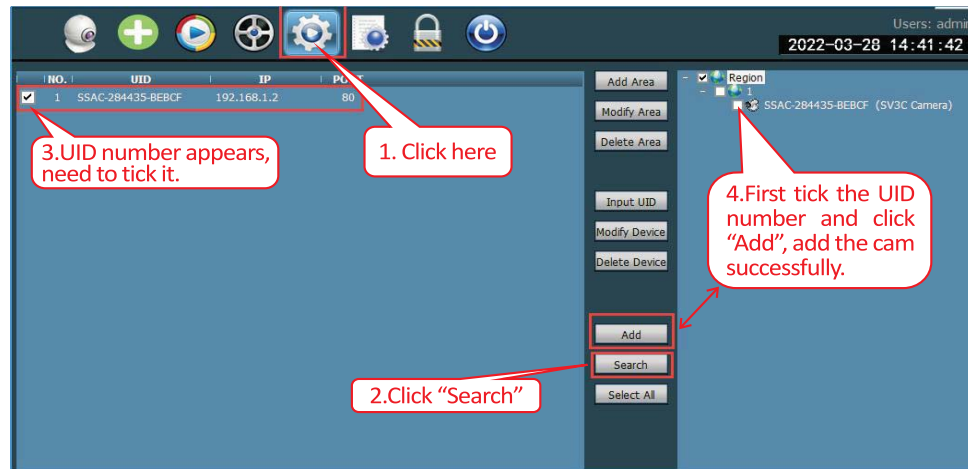
If you need to view the camera on PC, we recommend you to use the HiP2P PC Client software.

Open HIP2P Client, click any one of the icons such as “” then below Interface pop up, please click “OK” to log in (Password is empty).

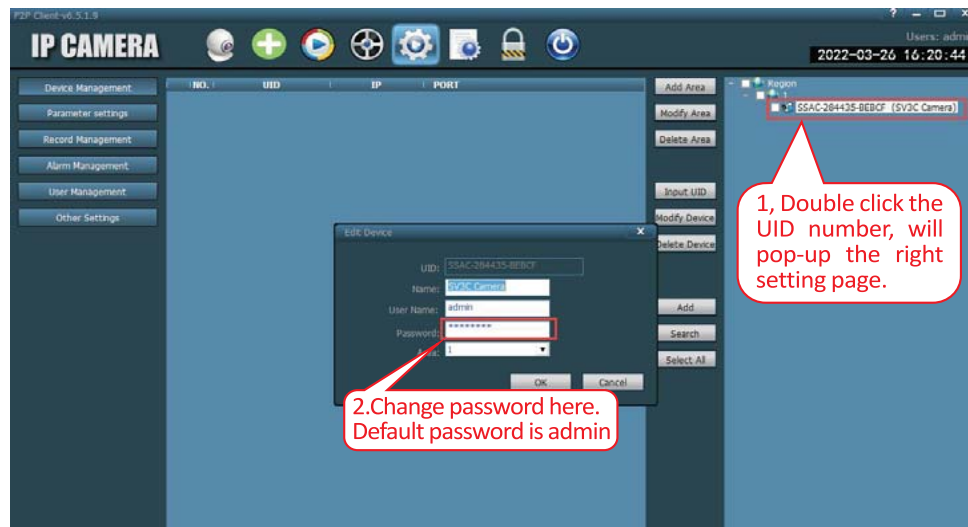


17 For more detailed Set up Manual, please refer to our website- www.sv3c.com to download

8.2 Add the camera on HiP2P PC Client software



8.3 Change the camera password



Note: Please click "OK" after you enter the new password. And must close the software, then open it again, the new password will be updated.

8.4 Connect and manage multiple cameras at the same time via P2P PC Client software on windows and MAC PC!



Please download the correct P2P PC Client software for Windows and MAC PC on SV3C website:

www.sv3c.com

Please confirm the camera and your computer are connected with the same network, otherwise the camera cannot be found successfully.

Any doubts about P2P function, pls contact customer service as below:

US Email address: info-us@sv3c.com

UK Email address: info-uk@sv3c.com

9. Reboot and Restore Factory Setting

9.1 Reconnect the power to restart the camera.



9.2 Press and hold the reset button for 5-15 seconds and the camera will restore to factory settings



You can also restart or reset the camera via mobile phone or PC.

10. More Info

This manual is to help customers to know and use the camera quickly, For detailed instructions and video tutorials please refer to SV3C website www.sv3c.com.

This manual may have descriptions and operations that do not match the product, If you have any questions or need technical support Please feel free to contact us.

US Email address: info-us@sv3c.com

UK Email address: info-uk@sv3c.com

FCC Warning:

This device complies with part 15 of the FCC Rules. Operation is subject to the following two conditions: (1) This device may not cause harmful interference, and (2) this device must accept any interference received, including interference that may cause undesired operation. Any Changes or modifications not expressly approved by the party responsible for compliance could void the user's authority to operate the equipment. This equipment has been tested and found to comply with the limits for a Class B digital device, pursuant to part 15 of the FCC Rules.

FCC RF exposure statement:

The equipment complies with FCC radiation exposure limits set forth for an uncontrolled environment. This equipment should be installed and operated with minimum distance between 20cm the radiator your body. These limits are designed to provide reasonable protection against harmful interference in a residential installation. This equipment generates uses and can radiate radio frequency energy and, if not installed and used in accordance with the instructions, may cause harmful interference to radio communications. However, there is no guarantee that interference will not occur in a particular installation. If this equipment does cause harmful interference to radio or television reception, which can be determined by turning the equipment off and on, the user is encouraged to try to correct the interference by one or more of the following measures:

- Reorient or relocate the receiving antenna.
- Increase the separation between the equipment and receiver.
- Connect the equipment into an outlet on a circuit different from that to which thereceiver is connected.