

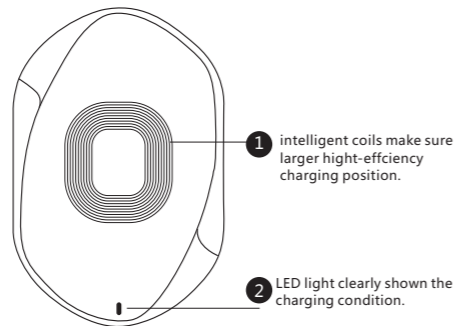
# HZP100

## PRODUCT MANUAL

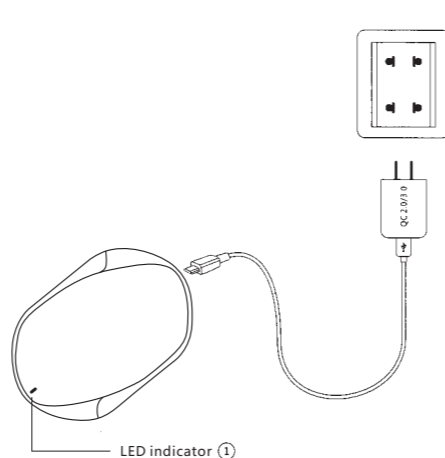
CE FC RoHS  
MADE IN CHINA

### Product Presentation

Thanks for choosing us!  
This is a wireless charger for smartphone that allows enjoy the fun of digital products easily.  
Please read the manual carefully before using the product, and keep properly for checking.



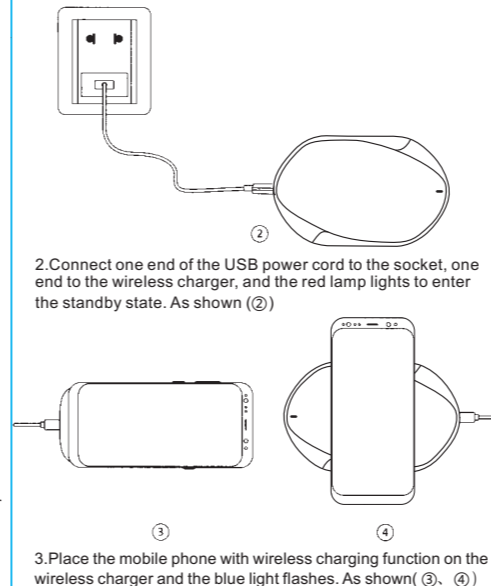
### Connect to power adapter



1. Plug the power adapter (QC2.0/QC3.0 fast charge adapter) into the outlet. Connect one end of the USB power cord to the adapter and one end to the wireless charger.

**NOTE: Charging pad controlled by smart chips, long-term standby can be assured.**

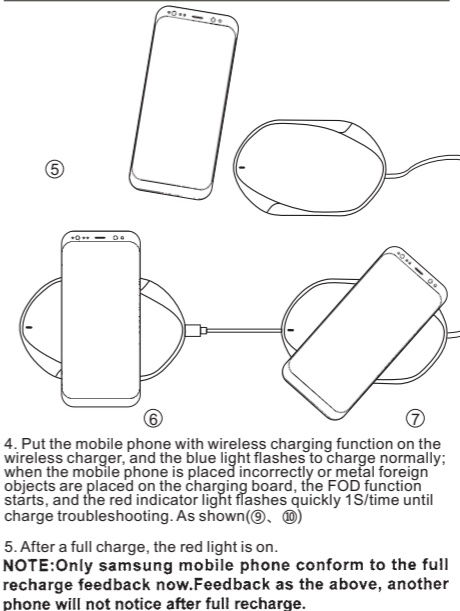
### Installation 1



2. Connect one end of the USB power cord to the socket, one end to the wireless charger, and the red lamp lights to enter the standby state. As shown (②)

3. Place the mobile phone with wireless charging function on the wireless charger and the blue light flashes. As shown (③、④)

### LED indication



4. Put the mobile phone with wireless charging function on the wireless charger, and the blue light flashes to charge normally; when the mobile phone is placed incorrectly or metal foreign objects are placed on the charging board, the FOD function starts, and the red indicator light flashes quickly 1S/time until charge troubleshooting. As shown (⑨、⑩)

5. After a full charge, the red light is on.  
**NOTE: Only Samsung mobile phone conform to the full recharge feedback now. Feedback as the above, another phone will not notice after full recharge.**

### Specification

Input	DC5V 2.0A DC9V 2.0A
Frequency	105-205KHz
Efficiency	≥85%
Size	127.6mm*85mm*7.5mm

### Attention

1. Do not squeeze or collisions.
2. Do not disassemble or throw into fire or water, to avoid causing a short circuit leakage.
3. Do not use the wireless charger in high temperature, humidity or corrosive environment, avoid damaging the circuit and avoid leakage.
4. Do not close with magnetic stripe or chip card (ID card, bank card, etc) to avoid magnetic failure.
5. Please keep the distance at least 20cm between implantable medical devices (pacemakers, implantable cochlear, etc) and the wireless charger, to avoid potential interference with the medical device.
6. Take care of the children, to ensure that they won't play the wireless charger as a toy, to avoid unnecessary accidents.

**NOTE: No power adapter, if you need, please purchase separately if you need.**

**FCC Caution:**

This device complies with part 15 of the FCC Rules. Operation is subject to the following two conditions: (1) This device may not cause harmful interference, and (2) this device must accept any interference received, including interference that may cause undesired operation.

Any Changes or modifications not expressly approved by the party responsible for compliance could void the user's authority to operate the equipment.

**Note:** This equipment has been tested and found to comply with the limits for a Class B digital device, pursuant to part 15 of the FCC Rules. These limits are designed to provide reasonable protection against harmful interference in a residential installation. This equipment generates uses and can radiate radio frequency energy and, if not installed and used in accordance with the instructions, may cause harmful interference to radio communications. However, there is no guarantee that interference will not occur in a particular installation. If this equipment does cause harmful interference to radio or television reception, which can be determined by turning the equipment off and on, the user is encouraged to try to correct the interference by one or more of the following measures:

- Reorient or relocate the receiving antenna.
- Increase the separation between the equipment and receiver.
- Connect the equipment into an outlet on a circuit different from that to which the receiver is connected.
- Consult the dealer or an experienced radio/TV technician for help.