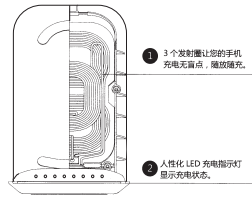


HZP-FAST3H 产品说明书

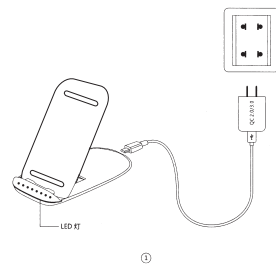
CE FCC RoHS
中国制造

充电方式一

感谢您购买本公司产品。本产品是一款智能手机无线充电器，让您轻松体验数码产品无限乐趣。使用本产品前请认真阅读本手册并妥善保管，以备查阅。

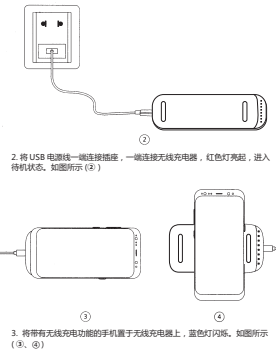


适配器连接

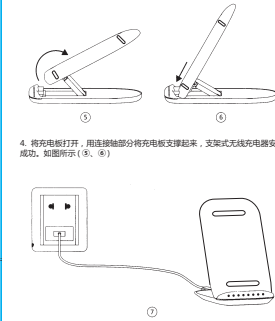


注：充电板由智能芯片控制，可放心长期待机。

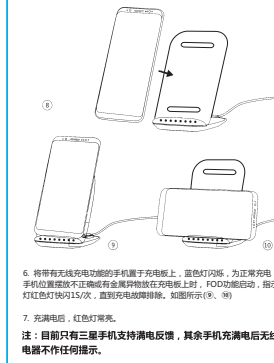
充电方式一



充电方式二



LED 指示



产品规格

输入电压	DC5V 2.0A DC9V 2.0A
工作频率	105-205KHz
电力转换	≥85%
规格尺寸	130mm*70mm*15mm

注意事项

- 请勿挤压或碰撞。
- 请勿自行拆卸或投入火中、水中，避免造成短路触电。
- 请勿在产重高温、潮湿或腐蚀性环境下使用无线充电器，避免损坏电路出现触电现象。
- 请勿与带磁条或者带芯片的磁卡（身份证、银行卡等）放置太近，避免造成磁卡失效。
- 请保持植入医疗设备（心脏起搏器、植入性耳蜗等）与无线充电器之间的距离至少为20cm，以避免对医疗设备造成潜在干扰。
- 应妥善保管儿童，以确保他们不将无线充电器当成玩具玩弄，以避免不必要的意外。

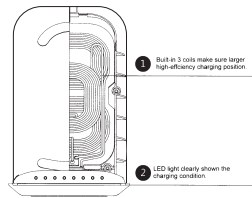
注：不含电源适配器，如需请另外购买

HZP-FAST3H PRODUCT MANUAL

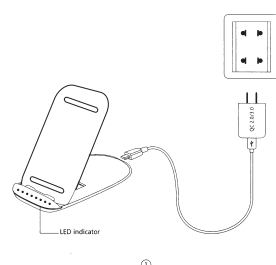
CE FCC RoHS
MADE IN CHINA

Product Introduction

Thanks for choosing us!
This is a wireless charger for smartphone that allows enjoy the fun of digital products easily. Please read the manual carefully before using the product and keep properly for checking.

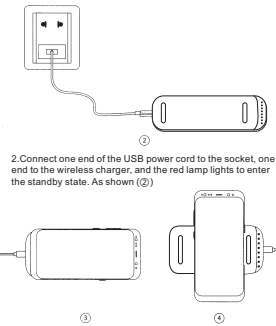


Connect to power adapter

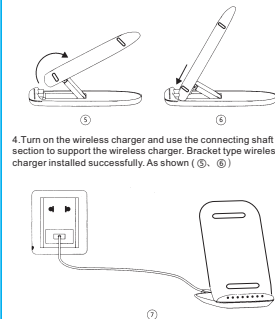


NOTE: Charging pad controlled by smart chips, long-term standby can be assured.

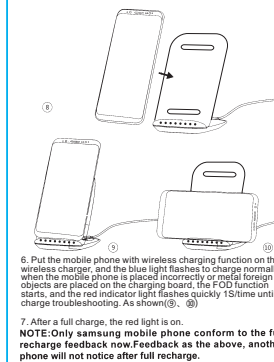
Installation 1



Installation 2



LED indication



Specification

Input	DC5V 2.0A DC9V 2.0A
Frequency	105-205KHz
Efficiency	≥85%
Size	130mm*70mm*15mm

Attention

- Do not squeeze or collisions.
- Do not disassemble or throw into fire or water, to avoid causing a short circuit leakage.
- Do not use the wireless charger in high temperature, humidity or corrosive environment, avoid damaging the circuit and avoid leakage.
- Do not close with magnetic stripe or chip card (ID card, bank card, etc) to avoid magnetic failure.
- Please keep the distance at least 20cm between implantable medical devices (pacemakers, implantable cochlear, etc) and the wireless charger, to avoid potential interference with the medical device.
- Take care of the children, to ensure that they won't play the wireless charger as a toy, to avoid unnecessary accidents.

NOTE: No power adapter, if you need, please purchase separately if you need.

FCC WARNING

This device complies with part 15 of the FCC Rules. Operation is subject to the following two conditions: (1) this device may not cause harmful interference, and (2) this device must accept any interference received, including interference that may cause undesired operation.

Any changes or modifications not expressly approved by the party responsible for compliance could void the user's authority to operate the equipment.

NOTE: This equipment has been tested and found to comply with the limits for a Class B digital device, pursuant to Part 15 of the FCC Rules. These limits are designed to provide reasonable protection against harmful interference in a residential installation. This equipment generates, uses and can radiate radio frequency energy and, if not installed and used in accordance with the instructions, may cause harmful interference to radio communications.

However, there is no guarantee that interference will not occur in a particular installation.

If this equipment does cause harmful interference to radio or television reception, which can be determined by turning the equipment off and on, the user is encouraged to try to correct the interference by one or more of the following measures:

- Reorient or relocate the receiving antenna.
- Increase the separation between the equipment and receiver.
- Connect the equipment into an outlet on a circuit different from that to which the receiver is connected.
- Consult the dealer or an experienced radio/TV technician for help.

To maintain compliance with FCC's RF Exposure guidelines, This equipment should be installed and operated with minimum distance between 20cm the radiator your body: Use only the supplied antenna.