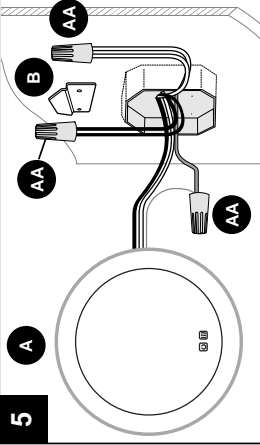
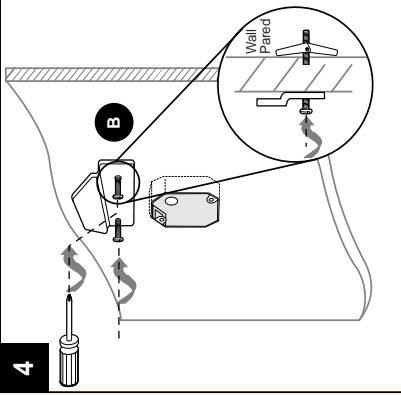




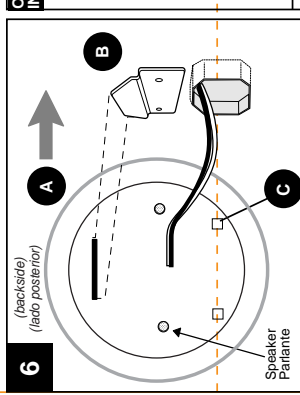
INSTALLATION OVERVIEW/DESCRIPCIÓN GENERAL DE LA INSTALACIÓN



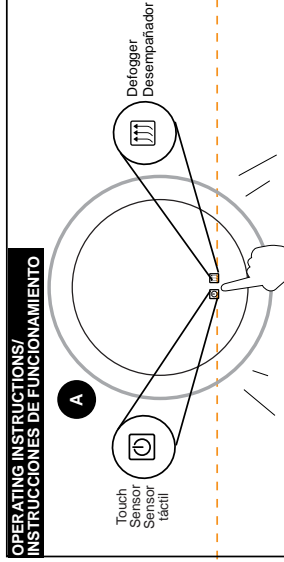
Connect wiring: WHITE to WHITE, BLACK to BLACK, YELLOW/GREEN to BARE.  
Conecte el cableado: BLANCO a BLANCO, NEGRO a NEGRO, el AMARILLO/VERDE al DESNUDO.

**A!** Consult an electrician if wiring needs differ.  
Consulte con un electricista si las necesidades de cableado varían.

OPERATING INSTRUCTIONS/ INSTRUCCIONES DE FUNCIONAMIENTO



Place C near bottom of A. Hang A using the slot on the back of A. Coloque C cerca de la parte inferior de A. Cuelgue A con la ranura en la parte posterior de A.

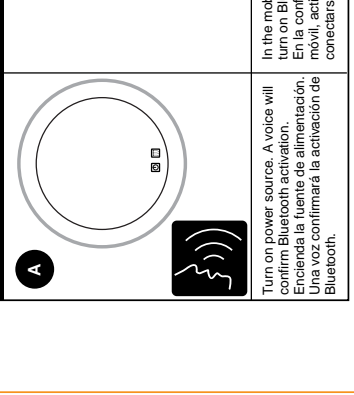


The front of A has a touch sensor, which can be used to control the brightness levels. La parte delantera de A tiene un sensor táctil, que se pueden utilizar para controlar los niveles de brillo.

- ON/OFF** - ENCENDER/APAGAR
- 1. Only **warm** light on
- 2. Only **cool** light on
- 3. Both lights off

**Defogger** / Desempañador

BLUETOOTH INSTRUCTIONS/ INSTRUCCIONES DE BLUETOOTH®



Turn on power source. A voice will confirm Bluetooth activation. Encienda la fuente de alimentación. Una voz confirmará la activación de Bluetooth.

In the mobile device settings, turn on Bluetooth to connect. En la configuración del dispositivo móvil, active Bluetooth para conectarse.

Sound will come through speakers in the back of A. El sonido llegará a través de los parlantes, en la parte posterior de A.

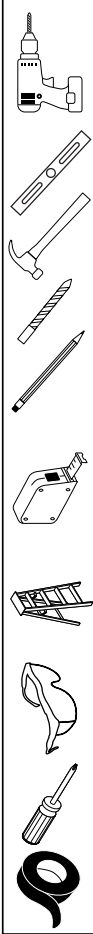
PREPARATION/PREPARACIÓN

Before beginning assembly of product, make sure all parts are present. Compare parts with package contents list and hardware contents list. If any part is missing or damaged, do not attempt to assemble the product.

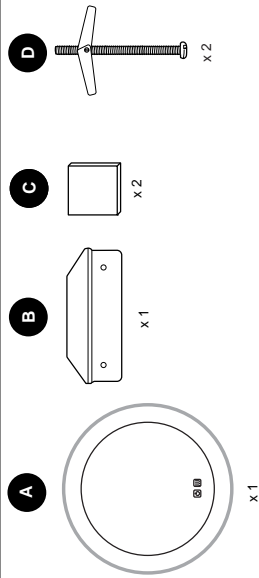
Antes de comenzar a ensamblar el producto, asegúrese de tener todas las piezas. Compare las piezas con la lista del contenido del paquete y la lista del contenido de los adlamentos. No intente ensamblar, usar o instalar el producto si falta alguna pieza o si éstas están dañadas.

Estimated Assembly Time: 30 minutos  
Tiempo estimado de ensamblaje: 30 minutos

TOOLS REQUIRED/OUTILIS NECESSAIRES/HERRAMIENTAS NECESARIAS:



PACKAGE CONTENTS/CONTENIDO DEL PAQUETE

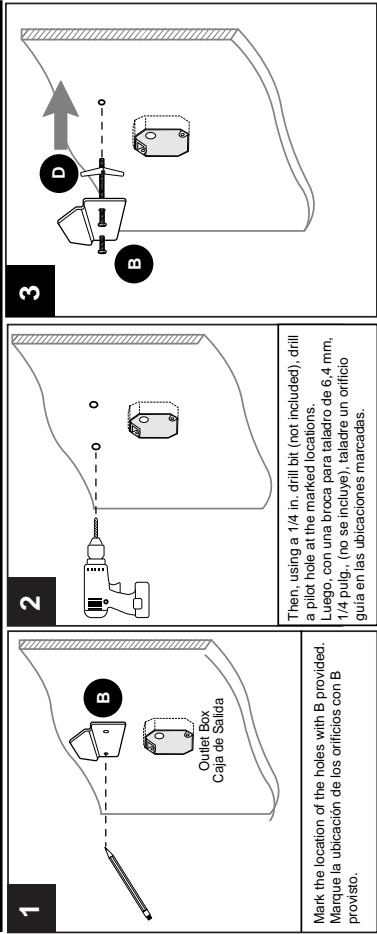


HARDWARE CONTENTS/ADITAMENTOS

Note: Hardware shown actual size. Nota: Los adlamentos se muestran en tamaño real.



INSTALLATION OVERVIEW/DESCRIPCIÓN GENERAL DE LA INSTALACIÓN



Mark the location of the holes with B provided. Marque la ubicación de los orificios con B provisto.

Then, using a 1/4 in. drill bit (not included), drill a pilot hole at the marked locations. Luego, con una broca para taladro de 6,4 mm, 1/4 pulg., (no se incluye), taladre un orificio guía en las ubicaciones marcadas.

## **FCC Statement**

This equipment has been tested and found to comply with the limits for a Class B digital device, pursuant to Part 15 of the FCC Rules. These limits are designed to provide reasonable protection against harmful interference in a residential installation. This equipment generates uses and can radiate radio frequency energy and, if not installed and used in accordance with the instructions, may cause harmful interference to radio communications. However, there is no guarantee that interference will not occur in a particular installation. If this equipment does cause harmful interference to radio or television reception, which can be determined by turning the equipment off and on, the user is encouraged to try to correct the interference by one or more of the following measures:

- Reorient or relocate the receiving antenna.
- Increase the separation between the equipment and receiver.
- Connect the equipment into an outlet on a circuit different from that to which the receiver is connected.
- Consult the dealer or an experienced radio/TV technician for help.

Changes or modifications not expressly approved by the party responsible for compliance could void the user's authority to operate the equipment.