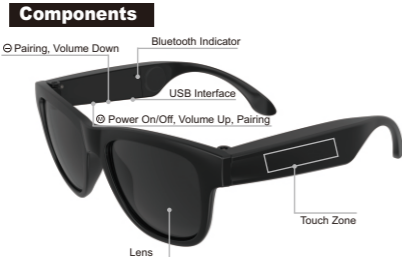


Headset Glasses

G1

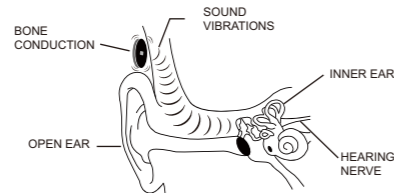
USER MANUAL



Introduction of Bone Conduction

Safe Listening with Open-ear Solution

A bone-conduction-transducer uses vibration for sound wave transmission to your skull. The technology lets you hear surrounding sound while listening to music, answering phone call, therefore much safer than traditional earphones, headphones or earpieces that completely block out the sound around you.



USER GUIDE

G1

Product Specification

Model NO.	G1
Product Name	Smart Sunglasses
Bluetooth Specification	V4.0
Bluetooth Chip	CSR8635
Bluetooth Mode	Headset, Hands-free A2DP
Transmission Distance	10m-15m
Transmission Class	Lossless Transmission
Frequency	2.4GHz
Phone-call Time	5 hours
Music Time	5 hours
Charging Time	2 hours
Charging Input	DC 5V Max 1A
Net Weight	45g

User Instruction

◆ Power On/Off

Power On: Press button for 3 seconds till blue light is on, and hear a "dudu" sound.

Power Off: Press button for 3 seconds till red light is on, and hear a "dudu" sound.

◆ Pairing

Way 1: After power on, press button for 3 seconds till blue and red lights blink alternately. Glasses make a "dudu" sound which means it is ready to be paired.

Turn on the Bluetooth of the Bluetooth device (such as Cellphone/Desktop/Laptop/Mac/Tablet PC, etc.) to search and select "G1". Bluetooth connection without password. After pairing successfully, user can play music and make a phone call by glasses freely. Glasses will be off automatically if connection failed in 15 minutes.

◆ Pairing with a new Bluetooth device

*Only under pairing mode could Bluetooth glasses be found and connected to your Bluetooth device.

◆ Automatic Connection

If glasses have been connected to Bluetooth devices once, it would connect to the last device automatically after power on. Glasses will be off automatically if connection failed in 15 minutes.

◆ Volume Up/Down

Up: Click button . Warning tone "dudu" rises when volume comes to Max.

Down: Click button .

◆ Music Operation

Play/Pause: Tap "touch zone" for play/pause.

Previous song: Slide forwards on "touch zone".

Next song: Slide backwards on "touch zone".



◆ Phone-call Answering, Rejecting or Ending

Answer a phone-call: Slide backwards on "touch zone".

Reject or End a phone-call: Slide forwards on "touch zone".

Pick up a new Incoming call when you already on a call:

Slide backwards on "touch zone" to pick up the new call, and the previous call will be hang up automatically.

◆ Voice Control

Press touch zone for 3 seconds to activate voice control (Siri of iPhone, phonetic assistance of Samsung); press for 3 seconds again to cancel it.

◆ Charging & low battery indication

Note: Charging voltage is 5V. It is suggested to use 500mA charging current if the charging current is less than 1A. USB cable for charging, indicator light turns red.

Low power reminder: LED flashes red and warning tone "dudu" rises. Then please charge in time.

Charging time: About 2 hours. When it is fully charged, the red light turns off.

⚠ Safety guide

> Please use this product under the local laws and regulations; Caution safety while driving and cycling in wearing this product.

> To assure your safety, please do not listen to music in loud volume under some complicated environment.

> Keep it away from kids, because small parts may cause injuries, asphyxia and so on.

> Pay attention to the warning signs in some special places before using this product, such as hospital, gas station, and any potentially explosive environment.

> Do not disassemble or damage the internal battery. Handle the battery under the local regulations. Do not throw it away as waste.

◆ Maintenance issues

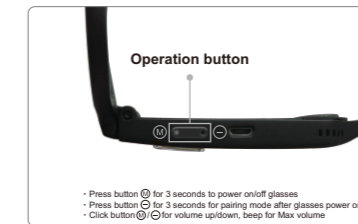
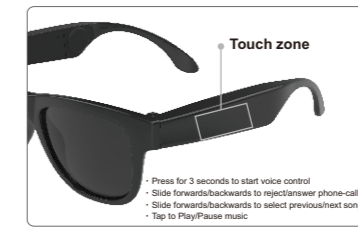
> Turn off the power when do not use this product.

> Do not put this product in liquid or moist place.

> Do not put this product near fire, to avoid explosion.

> Do not bump this product against sharp objects, to avoid scratches or damage.

> Please put this product in a dry place.



FCC Warning Statement

Changes or modifications not expressly approved by the party responsible for compliance could void the user's authority to operate the equipment. This equipment has been tested and found to comply with the limits for a Class B digital device, pursuant to Part 15 of the FCC Rules. These limits are designed to provide reasonable protection against harmful interference in a residential installation. This equipment generates uses and can radiate radio frequency energy and, if not installed and used in accordance with the instructions, may cause harmful interference to radio communications. However, there is no guarantee that interference will not occur in a particular installation. If this equipment does cause harmful interference to radio or television reception, which can be determined by turning the equipment off and on, the user is encouraged to try to correct the interference by one or more of the following measures:--

Reorient or relocate the receiving antenna.--
Increase the separation between the equipment and receiver.--
Connect the equipment into an outlet on a circuit different from that to which the receiver is connected.--
Consult the dealer or an experienced radio/TV technician for help.

Headset Glasses G1