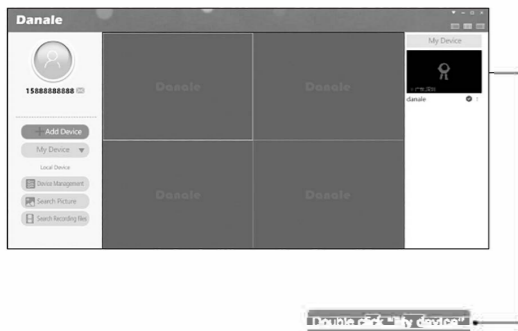
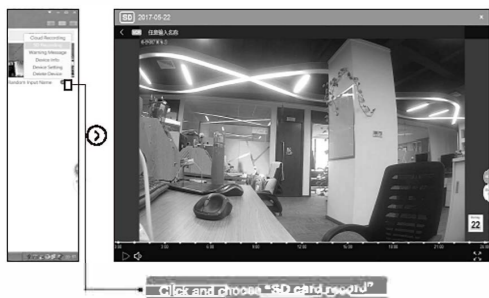


3.Login successfully, enter the software main interface,click **"My device"**.  
As picture shows:



4.Playback:Click **📺** icon,select **"SD card record"** can play back.If customers purchase Cloud Storage,select **"Cloud Record"** can play back.  
As picture shows:



## FAQ

### Question 1: When equipment prompt offline, remote connection failure , how to solve?

Answer: if the device is offline, First you should to check the network which equipment used in , computer or mobile phone can normal Internet access or not; Second check the Internet Indicator light is normally on or flashing,if the flash device is not connected to the routing, check whether the routing is working properly, routing signal and the name has been modified or not .

### Question 2: how to correctly use memory card ?

Answer: the right way is to insert the memory card into the device firstly ,then plugged in power, the first time use new card , the device will automatically formatted, you can through APP to check the working state of the memory card .

Connect video screen, click on the "device Settings"- "storage management", you can view equipment status, usage, video mode of the memory card .

### Question 3: how many G SD card maximum support?

Answer: the max support 128 gb memory card, it is recommended to use home furnishings TF card.

### Question 4: how to modify the device password?

Answer: there are two ways to modify the device password.

- ① Using mobile phones to change device password. Connect the video screen, click on the "device Settings", "system management", "modify the administrator password"
- ② Using the computer to modify the device password. Connect the video screen, click on the "remote Settings" - "system management" - "user management" click modify and set a new password.

### Question 5 : if you forget the user password ,how to do ?

Answer : Enter into client login screen ,Click on forget password to reset .

### Question 6: If the device cannot be viewed by many people ,how to do ?

Answer:The device supports one binding mobile phone has one user operating privileges,when many people view ,please share by first binding phone . if you want to change the binding phone ,please unbind .

### Question 7: How to restore factory setting?

Answer: Please find the RESET hole at the bottom of the camera, and use the top pin long press until the speaker is prompted.

## Product warranty

Dear

● When require warranty service , please show the warranty card and the purchase invoice, and please fill in the relevant content in detail, the company will provide clients product warranty within One year from the date of purchase of the product

● If has quality problems during the warranty period, we provide maintenance and replacement services free of charge, if it is man-made damage or beyond the warranty period, the company's maintenance and replacement service will be charged .

● The damage caused by improper use: such as the appearance destruction of abnormal abrasion, extrusion deformation, the entry of foreign matter, moisture, The seal on the product is altered to tear up and any other visible damage, other cases: If users disassemble or modify the careless use, improper operation, the damage caused by the water. And the damage for the irresistible reason: such as earthquake, flood, typhoon or war, purchase invoices of product doesn't match Model encoding or beyond the warranty period.

### Product warranty card

CUSTOMER DATA		SERIAL NO:		
NAME:	TEL:			
ADD:				
P.C:	PURCHASED DATE:	Y	M	D
Warranty period:From date of purchase on, one-year free warranty.				

MAINTENANCE AND REPAIR RECORD	
DATE	CONTERTS

### FCC Warning

This device complies with part 15 of the FCC rules. Operation is subject to the following two conditions: (1) this device may not cause harmful interference, and (2) this device must accept any interference received, including interference that may cause undesired operation.

Changes or modifications not expressly approved by the party responsible for compliance could void the user's authority to operate the equipment.

NOTE: This equipment has been tested and found to comply with the limits for a Class B digital device, pursuant to part 15 of the FCC Rules. These limits are designed to provide reasonable protection against harmful interference in a residential installation. This equipment generates uses and can radiate radio frequency energy and, if not installed and used in accordance with the instructions, may cause harmful interference to radio communications. However, there is no guarantee that interference will not occur in a particular installation. If this equipment does cause harmful interference to radio or television reception, which can be determined by turning the equipment off and on, the user is encouraged to try to correct the interference by one or more of the following measures:

- Reorient or relocate the receiving antenna
- Increase the separation between the equipment and receiver.
- Connect the equipment into an outlet on a circuit different from that to which the receiver is connected.
- Consult the dealer or an experienced radio/TV technician for help.

### Radiation Exposure Statement

This equipment complies with FCC radiation exposure limits set forth for an uncontrolled environment. This equipment should be installed and operated with minimum distance 20cm between the radiator and your body.

# User Manual

SHENZHEN SECULINK TECHNOLOGY CO.,LTD

WiFi IP CAMERA

Model: X1

Dear User,

Welcome to use our intelligent network camera products. You can browse your home's real-time and wonderful videos at any time by this product wherever you are, and catch everything which you care. Let you have a good life.

## Hardware Brackets Fixation

(The installation steps are only for some products)

1. Remove the disc holder and fix with the screw. As picture 1 shows:



2. Take out the camera, using the bottom available location to insert disc holder then finished the installation. As picture 2 shows:



## 1 Mobile remote control

1. Open the smart phone, scan the specified QR code, download and install APP. As picture shows:



### IOS APP

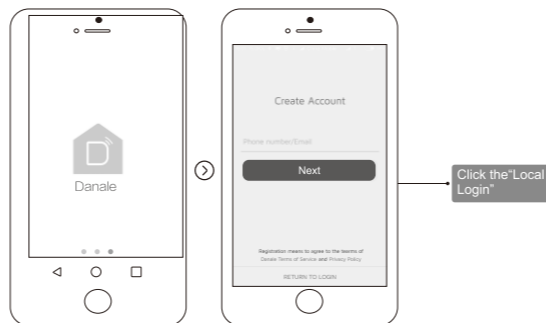
(Iphone users recommend using the UC browser or Wechat)



### Android APP

(Android user recommend using the UC browser, Don't use Wechat)

2. Open "Danale" app on the phone's desktop, Follow the steps to register an account, As picture shows:



3. Use the registered account to login, Click "Add Device". As shown below:



4. Input "WIFI Password", Click "Next", Then Search Device. As picture shows:

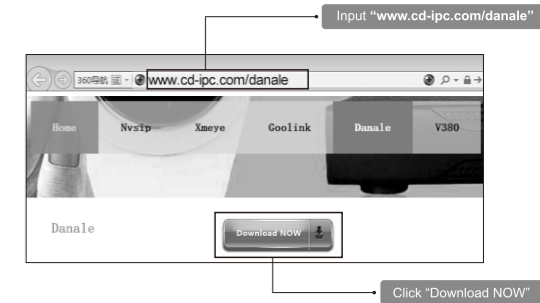


5. Click "Add" then can remote control DVR. As picture shows:



## 2 CMS

1. Input "www.cd-ipc.com/danale" to IE, Click the "CMS", to download and install this software. As picture shows:



2. Open the "Danacms", input the account and password as you just registered. As picture shows:

