



# Shenzhen DBT Telecommunication Technology CO.,LTD

## Antenna Testing Report

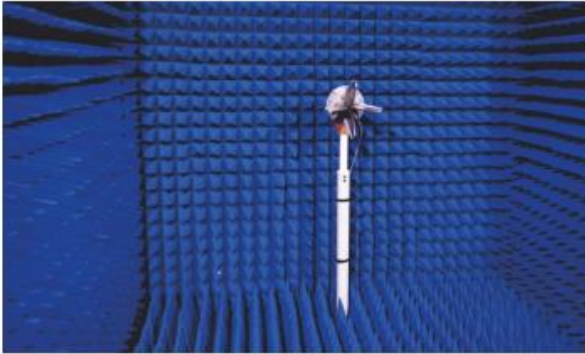
Client: Guangdong Welland Technology Co., Ltd.

Project: FI2016WB

Antenna standard: BT

RF: 王志锋  
TEL: 13823540870  
TIME: 2019/11/09

# 1. Test Equipment



OTA-800

Brand: ETS ✓

Frequency range: 370MHz-8.5GHz

Features: passive、 active test; G net、 C net、 2G/3G/4G, WIFI and BT, TRP、 TIS test.

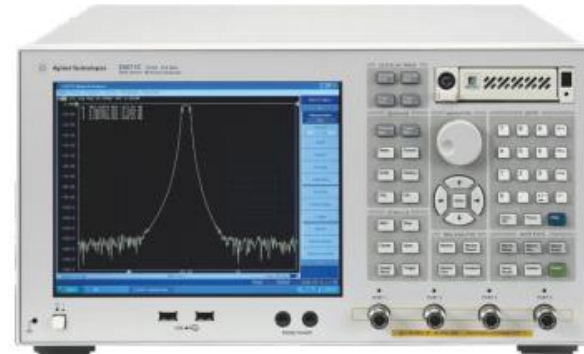


8960

Brand: Agilent

Frequency range: 292MHz-2700GHz

Features: 2G/3G active test.



5071C

Brand: Agilent ✓

Frequency range: 9KHz-8.5GHz

Features: 2G/3G/4G/BT/WIFI antenna comprehensive passive test.



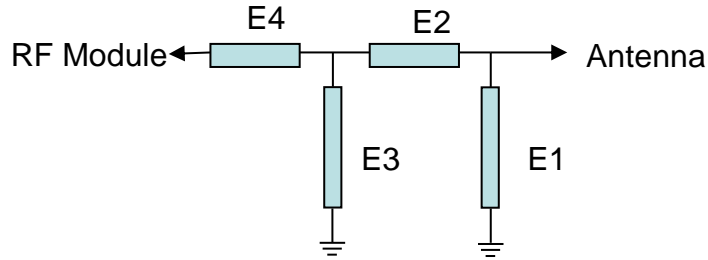
CMW500

Brand: Rohde & Schwarz

Frequency range: 70KHz-6GHz

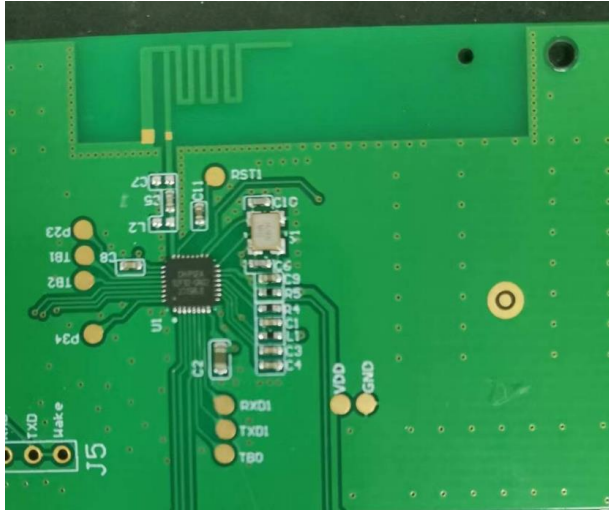
Features: 2G/3G/4G/BT/WIFI/NB-Lot antenna comprehensive passive test.

## 2. Matching circuit

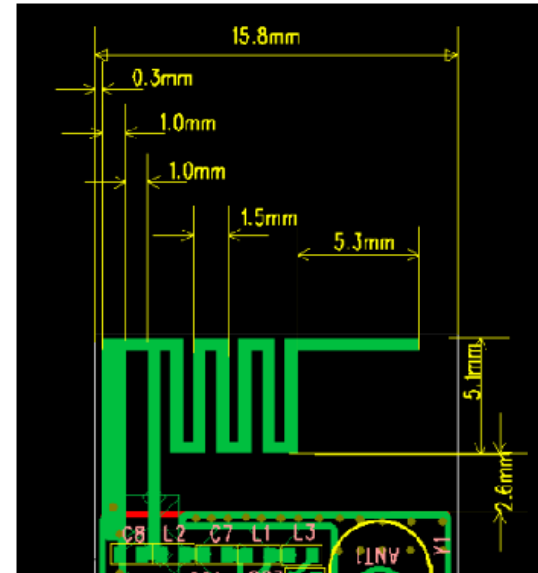


Element	MAIN	GPS/WIFI /BT	AUX
E1(0402)			
E2(0402)	1.5pF		
E3(0402)	N/A		
E4(0402)	0Ω		

### 3. Antenna assembly position



antenna position



antenna position

# 4. Electrical Parameter



Electrical Parameter	
Frequency Range (MHz)	2400~2500
VSWR	≤7.0
Input Impedance( $\Omega$ )	50
Gain(dBi)	0.89
Polarization( $^{\circ}$ )	vertical
Max power(W)	10
Antenna Type	Monopole
Working Temperature( $^{\circ}\text{C}$ )	-40~+80

# 5. Antenna Passive Data

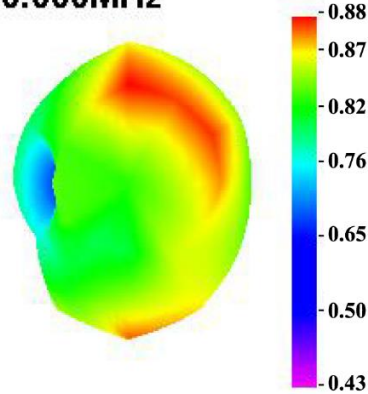


# 6. Antenna Gain/Efficiency/3D Apple Chart

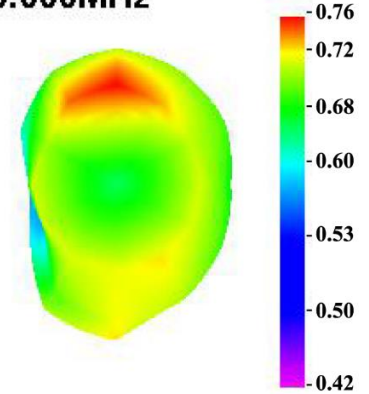


Freq (MHz)	Effi (%)	Gain (dBi)
2400	1.6	0.89
2410	1.36	0.87
2420	1.77	0.86
2430	1.45	0.85
2440	1.42	0.79
2450	1.18	0.78
2460	1.63	0.77
2470	1.01	0.76
2480	1	0.69
2490	0.73	0.61
2500	1.42	0.67

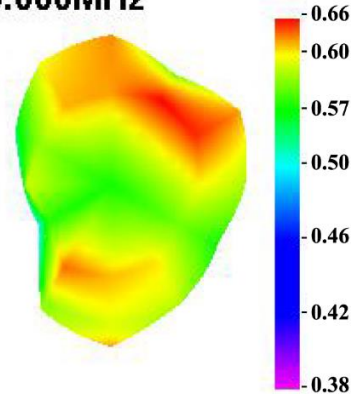
2400.000MHz



2450.000MHz



2500.000MHz

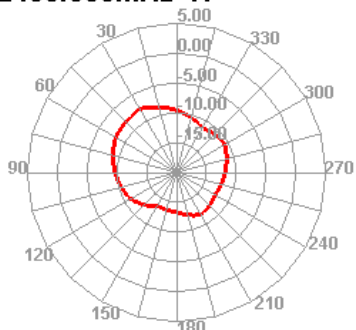




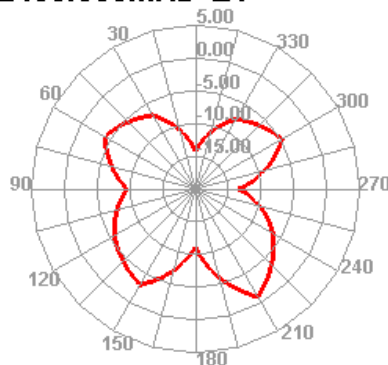
# 7. Antenna Direction Map



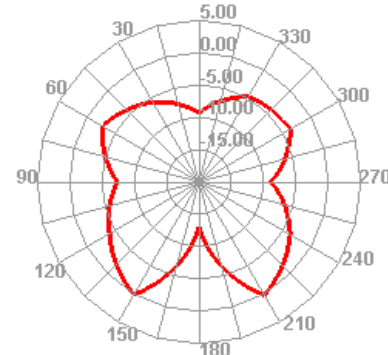
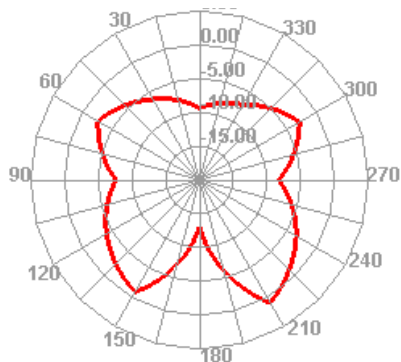
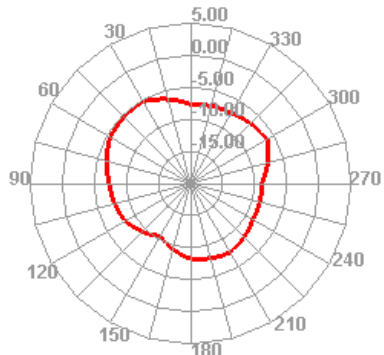
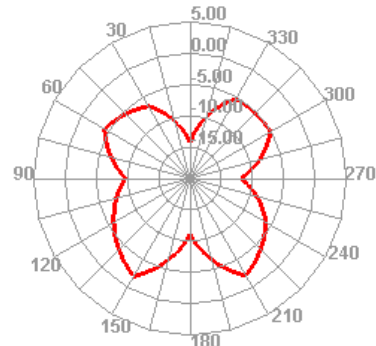
2400.000MHz H



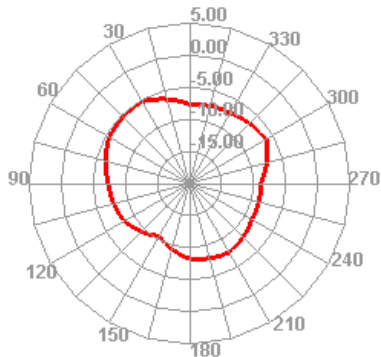
2400.000MHz E1



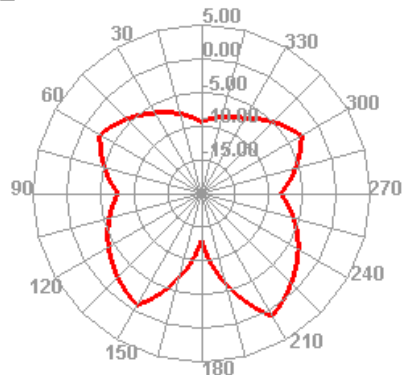
2400.000MHz E2



2450.000MHz H



2



2450.000MHz E2

