

# Honeywell

**EN** LED Color Changing String Lights Set with Remote Control  
**Use and Care Guide**  
Read and Save this Instructions Before Use

## TROUBLE SHOOTING

PROBLEM	POSSIBLE CAUSE	SOLUTION
Light will not come on.	A. Light not plugged into outlet. B. Outlet not powered.  C. Bulb(s) not lighting	A. Plug power cord into outlet. B. Check to make sure breaker is on and test outlet with another working electrical device to make sure it is receiving power. <b>NOTE:</b> Unplug power cord first. C1. Check to see if screw cap is tight. If loose, hand tighten. C2. If screw cap is tight: Unscrew cap, remove bulb and re-insert bulb. Hand tighten. If bulb is still not lighting, contact customer service.
	D. Remote control not working	D1. Replace the remote control battery. D2. Contact customer service.

### FCC WARNING:

**WARNING:** Changes or modifications to this unit not expressly approved by the party responsible for compliance could void the user authority to operate the equipment.  
This device complies with Part 15 of the FCC Rules. Operation is subject to the following two conditions:  
(1) this device may not cause harmful interference, and  
(2) this device must accept any interference received, including interference that may cause undesired operation.

**NOTES:**This equipment has been tested and found to comply with the limits for a Class B digital device, pursuant to Part 15 of the FCC Rules. These limits are designed to provide reasonable protection against harmful interference in a residential installation. This equipment generates, uses and can radiate radio frequency energy and, if not installed and used in accordance with the instructions, may cause harmful interference to radio communications.

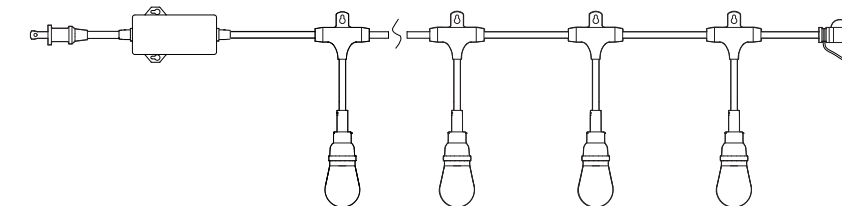
However, there is no guarantee that interference will not occur in a particular installation. If this equipment does cause harmful interference to radio or television reception, which can be determined by turning the equipment off and on, the user is encouraged to try to correct the interference by one or more of the following measures:

- Reorient or relocate the receiving antenna.
- Increase the separation between the equipment and receiver.
- Connect the equipment into an outlet on a circuit different from that to which the receiver is connected.
- Consult the dealer or an experienced radio/TV technician for help.

## IMPORTANT SAFETY INSTRUCTIONS

**Note:** This portable luminaire has a polarized plug (one blade is wider than the other) as a feature to reduce the risk of electric shock. This plug will fit in a polarized outlet only one way. If the plug does not fit fully in the outlet, reverse the plug. If it still does not fit, contact a qualified electrician. Never use with an extension cord unless plug can be fully inserted. Do not alter the plug.

Model: ST124A216110



**International Development Company**  
899 Henrietta Creek Rd.  
Roanoke, TX 76262 USA  
Toll-free: 1-877-723-0723

Made in China  
© 2019 IDC, all rights reserved.  
The Honeywell Trademark is used under license from Honeywell International Inc.  
Honeywell International Inc. makes no representations or warranties with respect to this product. This product is manufactured for International Development Company.

# Honeywell

## IMPORTANT SAFETY INSTRUCTIONS

### READ ALL INSTRUCTIONS • LISEZ TOUTES LES INSTRUCTIONS

**WARNING:** When using outdoor use portable luminaires, basic safety precautions should always be followed to reduce the risk of fire, electric shock, and personal injury, including the following:

- Use only two-wire outdoor extension cords that have two-prong plugs and receptacles that accept the appliance's plug.
- This portable luminaire has a polarized plug (one blade is wider than the other) as a feature to reduce the risk of electric shock. This plug will fit in a polarized outlet only one way. If the plug does not fit fully in the outlet, reverse the plug. If it still does not fit, contact a qualified electrician. Never use with an extension cord unless plug can be fully inserted. Do not alter the plug.
- Ground Fault Circuit Interrupter (GFCI) protection is to be provided on the circuit(s) or outlet(s) to be used for the wet location portable luminaire. Receptacles are available having built-in GFCI protection and are able to be used for this measure of safety.
- Use only with an extension cord for outdoor use, such as an extension cord of cord type SEW, SEOW, SEOOW, SOW, SOOW, STW, STOW, STOOW, SJEW, SJEOW, SJEOWW, SJW, SJOW, SJOOW, SJTW, SJTOW, or SJTOOW.

### SAVE THESE INSTRUCTIONS

**IMPORTANT:** Read all safety precautions and installation instructions carefully before installing or servicing this fixture. Failure to comply with these instructions could result in a potentially fatal electric shock, fire, and/or property damage.

In order to ensure proper installation, please follow each step below.

**AVERTISSEMENT:** lors de l'utilisation de luminaires portables extérieurs, des précautions de sécurité élémentaires doivent toujours être suivies pour réduire les risques d'incendie, de choc électrique et de blessures, notamment:

- Utilisez uniquement des rallonges extérieures à deux fils munies de fiches à deux broches et de prises qui acceptent la fiche de l'appareil.
- Ce luminaire portable a une fiche polarisée (une lame est plus large que l'autre) qui permet de réduire les risques de choc électrique. Cette fiche ne peut être insérée dans une prise polarisée. Si la fiche ne s'insère pas complètement dans la prise, inversez-la. Si le problème persiste, contactez un électricien qualifié. Ne jamais utiliser avec une rallonge à moins que la fiche puisse être complètement insérée. Ne modifiez pas la fiche.
- Une protection de disjoncteur de fuite à la terre (GFCI) doit être fournie sur le (s) circuit (s) ou la (s) prise (s) à utiliser pour le luminaire portable pour site humide. Les prises sont disponibles avec une protection GFCI intégrée et peuvent être utilisées pour cette mesure de sécurité.
- Utilisez uniquement avec une rallonge pour utilisation à l'extérieur, telle qu'une rallonge de type SEW, SEOW, SEOOW, SOW, STOW, STOW, STOW, STOOW, SJEW, SJEOW, SJW, SJOW, SJOOW, SJTOW, SJTOW, ou SJTOOW.

### CONSERVEZ CES INSTRUCTIONS

**IMPORTANT:** Lisez attentivement toutes les précautions de sécurité et les instructions d'installation avant d'installer ou de réparer ce luminaire. Le non respect de ces instructions peut entraîner un choc électrique, un incendie et / ou des dégâts matériels potentiellement mortels.

Afin de garantir une installation correcte, veuillez suivre chaque étape ci-dessous.

### WARNING • ATTENTION

#### RISK OF ELECTRIC SHOCK • RISQUE DE CHOC ÉLECTRIQUE

- RECEPTACLE OUTLETS USED FOR POWERING STRING LIGHTS SHALL COMPLY WITH ALL NATIONAL AND LOCAL ELECTRICAL CODES.
- CONSULT LOCAL ELECTRICIAN IF UNSURE OF COMPLIANCE REQUIREMENTS.
- DO NOT SUBMERSE.
- DO NOT USE AROUND AQUARIUMS.
- STRING LIGHTS ARE A WET LOCATION PRODUCT AND HAVE NO REPLACEABLE OR SERVICEABLE PARTS.
- DO NOT USE WITH EXTENSION CORD NEAR WATER OR WHERE WATER MAY ACCUMULATE.
- KEEP LAMPS AT LEAST 16 FEET FROM POOLS AND SPAS.
- KEEP PLUGS AND RECEPTACLES DRY.
- AVOID DAMAGE TO THE CORDS AND LAMP ASSEMBLIES DURING INSTALLATION. PERIODICALLY INSPECT THE STRING LIGHTS FOR PHYSICAL DAMAGE OR OTHER DAMAGE CAUSED BY OUTDOOR EXPOSURE TO THE ELEMENTS.
- REPLACE ANY DAMAGED STRING LIGHTS STRINGS.
- DO NOT INSTALL IN LOCATIONS WHERE STRING LIGHTS CAN BE STEPPED ON.
- ENSURE STRING LIGHTS ARE UNPLUGGED FROM POWER DURING INSTALLATION.
- STRING LIGHTS SHOULD BE INSTALLED OUT OF THE REACH OF CHILDREN OR NOT ALLOWING CHILDREN TO PLAY WITH THEM.

#### RISK OF FIRE • RISQUE D'INCENDIE

- STRING LIGHTS ARE DESIGNED TO BE MOUNTED WITH THEIR INDIVIDUAL KEYHOLE MOUNTING FEATURE. DO NOT MOUNT STRING LIGHTS BY USING THE MAIN ELECTRICAL CORD OR THE INDIVIDUAL DROP CORDS.

## IMPORTANT SAFETY INSTRUCTIONS

- STRING LIGHTS ARE DESIGNED TO BE LINKED BY USING THEIR ELECTRICAL PLUGS AND RECEPTACLES TO A MAXIMUM DISTANCE OF 720 FEET.
- STRING LIGHT INTERCONNECTING RECEPTACLES ARE INTENDED ONLY FOR THE LINKING OF COMPATIBLE STRING LIGHT STRINGS. DO NOT USE STRING LIGHT RECEPTACLES FOR ANY OTHER ELECTRICAL PURPOSE.
- DO NOT MOUNT STRING LIGHTS IN ANY POSITION WHERE THE BULB IS FACING UP.
- DO NOT ALLOW THE LED LAMP ASSEMBLIES TO BE IN CONTACT WITH COMBUSTIBLE MATERIALS. LED LAMP ASSEMBLIES SHOULD HANG FREELY AND NOT BE SUSCEPTIBLE TO REPETITIVE DAMAGE CAUSED BY ENVIRONMENTAL CONDITIONS SUCH AS WIND, RAIN, AND ICE.
- NOT INTENDED FOR INSTALLATION IN CEILINGS, SOFFITS, CABINETS, ATTICS, OR OTHER ENCLOSED SPACES.

## INSTALLATION

**Congratulations on your recent purchase of the LED string lights.**  
**Purchase additional lights to form one continuous string up to 720 feet!**

Model#	Length (ft)	Bulb Spacing	Input (watt)	No. Bulb
ST124A216110	24	1.64 ft	10.5W	12

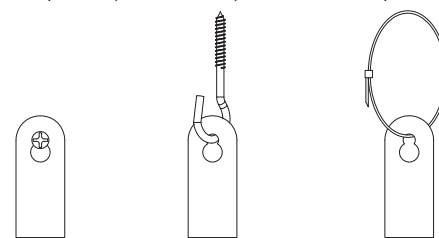
### STEP 1: INITIAL SETUP

- Carefully unpack string lights from box, then remove protective film from each bulb. Dispose of film properly (see warning).
- When installing string lights outside, a Ground Fault Circuit Interrupter (GFCI) receptacle should be used. Before installing, plug the string lights into the GFCI receptacle to ensure all lights work properly.

**IMPORTANT:** Unplug the string lights prior to mounting.

### STEP 2: INSTALLING STRING LIGHTS

- IMPORTANT:** Only mount string lights to a solid support such as joists, beams, studs or other solid mounting surfaces.
- Each String Light is designed with a universal keyhole for mounting with lights hanging downward. Hardware options (not included) screws, nail, zip ties, hooks and more.



- Guide wires in compliance with local electrical and building codes may also be used to support the string lights.
- Once appropriate GFCI outlet location, mounting surface and hardware are determined, mount your string lights.
- When finished mounting, plug the male plug into the GFCI receptacle and place the female receptacle cover firmly over the unused outlet.
- Adapter (A) Installation Instructions:

#### For Concrete / Masonry Installation:

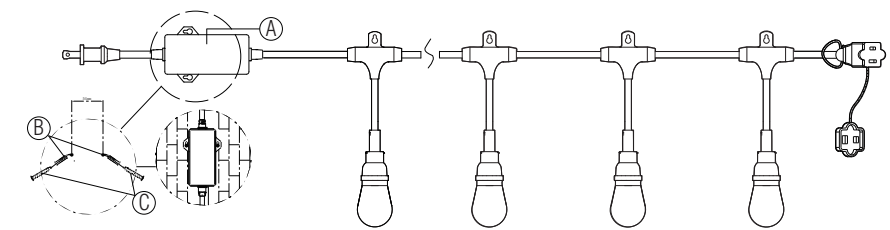
- Using Adapter mounting holes as a guide, mark area to drill with a pen or pencil
- Predrill 6mm diameter holes.
- Install the expansion wall anchors (B) (included) into the holes, and then screw the self-tapping screws (C) (included) into the expansion wall anchors allowing enough room to pull adapter through adapter eyelets.
- Thread the adapter (A) mounting holes over the installed screws, then pull the adapter (A) to fix it on the mounting screw, and then tighten the screws (C) to secure adapter.

#### For Wood Installation:

- Using Adapter mounting holes as a guide, mark area to drill with a pen or pencil.

## INSTALLATION

- Screw the self-tapping screws (C) (included) into wood surface allowing enough room to pull adapter through adapter eyelets.
- Thread the adapter (A) mounting holes over the installed screws, then pull the adapter (A) to fix it on the mounting screw, and then tighten the screws (C) to secure adapter.



### STEP 3: INSTALLING MULTIPLE STRING LIGHTS SETS

Extend the length of your lights by connecting more than one strand together to form one continuous string up to 720 feet! Simply follow the above installation steps making sure each connection between strands is secure and the end female receptacle is securely covered using the receptacle cover when done.

**NOTE:** Always unplug string light from outlet before connecting additional string light.

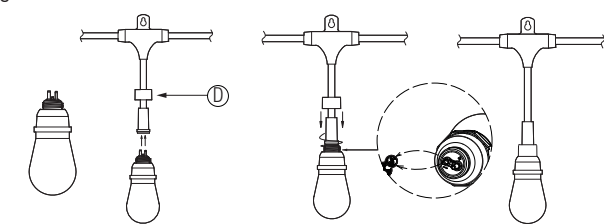
### REMOVING STRING LIGHTS SETS

- Always unplug string lights from their receptacle prior to removing.
- Carefully remove each light individually from the mounting hardware.
- Store lights in a dry location.

### REPLACING BULBS

\*To purchase additional replacement bulbs, please contact IDC Customer Service.

- Unplug light strand from power outlet.
- Unscrew cap (D) to reveal light bulb.
- Carefully remove light bulb and discard.
- Align 2 pins of replacement bulb with 2 holes on light strand and gently push pins into holes. Match (+)/(-) marking on string with (+)/(-) on bulb to install correctly.
- Screw cap (D) back tightly but do not over tighten.
- Plug in light strand.



## REMOTE CONTROL

#### POWER

Controls string light.  
 "ON" - turns string lights ON.  
 "OFF" - turns all lights OFF.

#### RGBW SELECTOR

Changes color of LEDs (Red, Green, Blue or White)

#### COLOR SELECTOR

Changes color of LEDs (Orange, Yellow, Light Blue, Pink, Purple, Neon Green)

#### BATTERY

Requires 2 AAA Battery (included and packed in blister card with remote control.)

REMOTE IS INTENDED FOR DRY LOCATIONS

#### Remote Control Operation

- The remote control unit will operation lights within 20 m/65 ft range.
- Install batteries and point remote towards string light to activate light strand.
- Use the DIMMER, RGBW SELECTOR, COLOR SELECTOR, and COLOR CHANGING MODE functions by pointing the remote control towards the string light and selecting the desired function.

**DIMMER**  
Controls brightness of string light.

**COLOR CHANGING MODE**  
Select different lighting scene.