

FCC REPORT

Applicant: INTERNATIONAL DEVELOPMENT COMPANY

Address of Applicant: 899 Henrietta Creek Road, Roanoke, Texas 76262, United States

Manufacturer/Factory: ZhongshanQuanxin Lighting Electrical Co., Ltd.

Address of Manufacturer/Factory: Hong Ji Street, Shalang, Long Ping Cun, West District, Zhongshan Guangdong 528411 China

Equipment Under Test (EUT)

Product Name: SOLAR LED POOL LIGHT W/BLUETOOTH SPEAKER

Model No.: SR82SP01A-06, SR8#SP01A-06 (Where "#" is used to denote numbers or blank for commercial purpose)

FCC ID: 2AP35-SR82SP01A

Applicable standards: FCC CFR Title 47 Part 15 Subpart C Section 15.249

Date of sample receipt: April 30, 2019

Date of Test: April 30, 2019-May 06, 2019

Date of report issued: May 06, 2019

Test Result : PASS *

* In the configuration tested, the EUT complied with the standards specified above.

Authorized Signature:

Robinson Lo

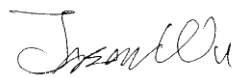
Laboratory Manager

This results shown in this test report refer only to the sample(s) tested, this test report cannot be reproduced, except in full, without prior written permission of the company. The report would be invalid without specific stamp of test institute and the signatures of compiler and approver.

2 Version

Version No.	Date	Description
00	May 06, 2019	Original

Prepared By:

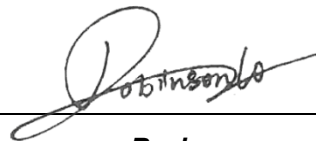


Date:

May 06, 2019

Project Engineer

Check By:



Date:

May 06, 2019

Reviewer

3 Contents

	Page
1 COVER PAGE.....	1
2 VERSION.....	2
3 CONTENTS	3
4 TEST SUMMARY	4
4.1 MEASUREMENT UNCERTAINTY	4
5 GENERAL INFORMATION.....	5
5.1 GENERAL DESCRIPTION OF EUT	5
5.2 TEST MODE	7
5.3 DESCRIPTION OF SUPPORT UNITS	7
5.4 DEVIATION FROM STANDARDS.....	7
5.5 ABNORMALITIES FROM STANDARD CONDITIONS	7
5.6 TEST FACILITY.....	8
5.7 TEST LOCATION	8
6 TEST INSTRUMENTS LIST	9
7 TEST RESULTS AND MEASUREMENT DATA.....	11
7.1 ANTENNA REQUIREMENT	11
7.2 CONDUCTED EMISSIONS	12
7.3 RADIATED EMISSION METHOD	15
7.3.1 <i>Field Strength of The Fundamental Signal</i>	17
7.3.2 <i>Spurious emissions</i>	18
7.3.3 <i>Bandedge emissions</i>	23
7.4 20dB OCCUPY BANDWIDTH	25
8 TEST SETUP PHOTO	27
9 EUT CONSTRUCTIONAL DETAILS	29

4 Test Summary

Test Item	Section in CFR 47	Result
Antenna requirement	15.203	Pass
AC Power Line Conducted Emission	15.207	Pass
Field strength of the fundamental signal	15.249 (a)	Pass
Spurious emissions	15.249 (a) (d)/15.209	Pass
Band edge	15.249 (d)/15.205	Pass
20dB Occupied Bandwidth	15.215 (c)	Pass

Pass: The EUT complies with the essential requirements in the standard.

Remark: Test according to ANSI C63.10:2013.

4.1 Measurement Uncertainty

Test Item	Frequency Range	Measurement Uncertainty	Notes
Radiated Emission	30MHz-200MHz	3.8039dB	(1)
Radiated Emission	200MHz-1GHz	3.9679dB	(1)
Radiated Emission	1GHz-18GHz	4.29dB	(1)
Radiated Emission	18GHz-40GHz	3.30dB	(1)
AC Power Line Conducted Emission	0.15MHz ~ 30MHz	3.44dB	(1)

Note (1): The measurement uncertainty is for coverage factor of k=2 and a level of confidence of 95%.

5 General Information

5.1 General Description of EUT

Product Name:	SOLAR LED POOL LIGHT W/BLUETOOTH SPEAKER
Model No.:	SR82SP01A-06, SR8#SP01A-06 (Where "#" is used to denote numbers or blank for commercial purpose)
Test model:	SR82SP01A-06
<i>Remark: All above models are identical in the same PCB layout, interior structure and electrical circuits. The only difference is model name for commercial purpose.</i>	
Serial No.:	QX82SP01A06
Hardware version:	VA
Software version:	V2.5.1
Test sample(s) ID:	GTS201904000180-1
Sample(s) Status	Engineered sample
Operation Frequency:	2402MHz~2480MHz
Channel numbers:	79
Channel separation:	1MHz
Modulation type:	GFSK, $\pi/4$ -DQPSK
Antenna Type:	PCB antenna
Antenna gain:	1.2dBi(declare by applicant)
Power supply:	Battery: DC 3.7V, 1300mAh, 4.81Wh

Operation Frequency each of channel							
Channel	Frequency	Channel	Frequency	Channel	Frequency	Channel	Frequency
1	2402MHz	21	2422MHz	41	2442MHz	61	2462MHz
2	2403MHz	22	2423MHz	42	2443MHz	62	2463MHz
3	2404MHz	23	2424MHz	43	2444MHz	63	2464MHz
4	2405MHz	24	2425MHz	44	2445MHz	64	2465MHz
5	2406MHz	25	2426MHz	45	2446MHz	65	2466MHz
6	2407MHz	26	2427MHz	46	2447MHz	66	2467MHz
7	2408MHz	27	2428MHz	47	2448MHz	67	2468MHz
8	2409MHz	28	2429MHz	48	2449MHz	68	2469MHz
9	2410MHz	29	2430MHz	49	2450MHz	69	2470MHz
10	2411MHz	30	2431MHz	50	2451MHz	70	2471MHz
11	2412MHz	31	2432MHz	51	2452MHz	71	2472MHz
12	2413MHz	32	2433MHz	52	2453MHz	72	2473MHz
13	2414MHz	33	2434MHz	53	2454MHz	73	2474MHz
14	2415MHz	34	2435MHz	54	2455MHz	74	2475MHz
15	2416MHz	35	2436MHz	55	2456MHz	75	2476MHz
16	2417MHz	36	2437MHz	56	2457MHz	76	2477MHz
17	2418MHz	37	2438MHz	57	2458MHz	77	2478MHz
18	2419MHz	38	2439MHz	58	2459MHz	78	2479MHz
19	2420MHz	39	2440MHz	59	2460MHz	79	2480MHz
20	2421MHz	40	2441MHz	60	2461MHz		

Note:

In section 15.31(m), regards to the operating frequency range over 10 MHz, the Lowest frequency, the middle frequency, and the highest frequency of channel were selected to perform the test, and the selected channel see below:

Channel	Frequency
The lowest channel	2402MHz
The middle channel	2441MHz
The Highest channel	2480MHz

5.2 Test mode

Transmitting mode	Keep the EUT in continuously transmitting mode.
<i>Remark: During the test, the dutycycle >98%, the test voltage was tuned from 85% to 115% of the nominal rated supply voltage, and found that the worst case was under the nominal rated supply condition. So the report just shows that condition's data.</i>	

Pre-test mode.

We have verified the construction and function in typical operation, The EUT was placed on three different polar directions; i.e. X axis, Y axis, Z axis. which was shown in this test report and defined as follows:

Axis	X	Y	Z
Field Strength(dBuV/m)	92.23	93.13	91.26

Final Test Mode:

The EUT was tested in GFSK & $\pi/4$ -DQPSK modulation, and found the GFSK modulation is the worst case. According to ANSI C63.10 standards, the test results are both the "worst case" and "worst setup":
Y axis (see the test setup photo)

5.3 Description of Support Units

Manufacturer	Description	Model	Serial Number	Remark
APPLE	USB Charger	A1399	N/A	For Conducted Emission test
DELTA	ADAPTER	ADP-60ADT	N/A	For Radiated Emissions test

5.4 Deviation from Standards

None.

5.5 Abnormalities from Standard Conditions

None.

5.6 Test Facility

The test facility is recognized, certified, or accredited by the following organizations:

- **FCC —Registration No.: 381383**

Global United Technology Services Co., Ltd., Shenzhen EMC Laboratory has been registered and fully described in a report filed with the (FCC) Federal Communications Commission. The acceptance letter from the FCC is maintained in files. Registration 381383.

- **NVLAP (LAB CODE:600179-0)**

Global United Technology Services Co., Ltd., is accredited by the National Voluntary Laboratory Accreditation Program (NVLAP). LAB CODE:600179-0

5.7 Test Location

All tests were performed at:

Global United Technology Services Co., Ltd.

No. 301-309, 3/F., Jinyuan Business Building, No.2, Laodong Industrial Zone, Xixiang Road, Baoan District, Shenzhen, Guangdong, China 518102

Tel: 0755-27798480

Fax: 0755-27798960

6 Test Instruments list

Radiated Emission:						
Item	Test Equipment	Manufacturer	Model No.	Inventory No.	Cal.Date (mm-dd-yy)	Cal.Due date (mm-dd-yy)
1	3m Semi- Anechoic Chamber	ZhongYu Electron	9.2(L)*6.2(W)* 6.4(H)	GTS250	July. 03 2015	July. 02 2020
2	Control Room	ZhongYu Electron	6.2(L)*2.5(W)* 2.4(H)	GTS251	N/A	N/A
3	EMI Test Receiver	Rohde & Schwarz	ESU26	GTS203	June. 27 2018	June. 26 2019
4	BiConiLog Antenna	SCHWARZBECK MESS-ELEKTRONIK	VULB9163	GTS214	June. 27 2018	June. 26 2019
5	Double -ridged waveguide horn	SCHWARZBECK MESS-ELEKTRONIK	BBHA 9120 D	GTS208	June. 27 2018	June. 26 2019
6	Horn Antenna	ETS-LINDGREN	3160	GTS217	June. 27 2018	June. 26 2019
7	EMI Test Software	AUDIX	E3	N/A	N/A	N/A
8	Coaxial Cable	GTS	N/A	GTS213	June. 27 2018	June. 26 2019
9	Coaxial Cable	GTS	N/A	GTS211	June. 27 2018	June. 26 2019
10	Coaxial cable	GTS	N/A	GTS210	June. 27 2018	June. 26 2019
11	Coaxial Cable	GTS	N/A	GTS212	June. 27 2018	June. 26 2019
12	Amplifier(100kHz-3GHz)	HP	8347A	GTS204	June. 27 2018	June. 26 2019
13	Amplifier(2GHz-20GHz)	HP	84722A	GTS206	June. 27 2018	June. 26 2019
14	Amplifier (18-26GHz)	Rohde & Schwarz	AFS33-18002 650-30-8P-44	GTS218	June. 27 2018	June. 26 2019
15	Band filter	Amindeon	82346	GTS219	June. 27 2018	June. 26 2019
16	Power Meter	Anritsu	ML2495A	GTS540	June. 27 2018	June. 26 2019
17	Power Sensor	Anritsu	MA2411B	GTS541	June. 27 2018	June. 26 2019
18	Wideband Radio Communication Tester	Rohde & Schwarz	CMW500	GTS575	June. 27 2018	June. 26 2019
19	Splitter	Agilent	11636B	GTS237	June. 27 2018	June. 26 2019
20	Loop Antenna	ZHINAN	ZN30900A	GTS534	June. 27 2018	June. 26 2019
21	Breitband hornantenne	SCHWARZBECK	BBHA 9170	GTS579	Oct. 20 2018	Oct. 19 2019
22	Amplifier	TDK	PA-02-02	GTS574	Oct. 20 2018	Oct. 19 2019
23	Amplifier	TDK	PA-02-03	GTS576	Oct. 20 2018	Oct. 19 2019
24	PSA Series Spectrum Analyzer	Rohde & Schwarz	FSP	GTS578	June. 27 2018	June. 26 2019

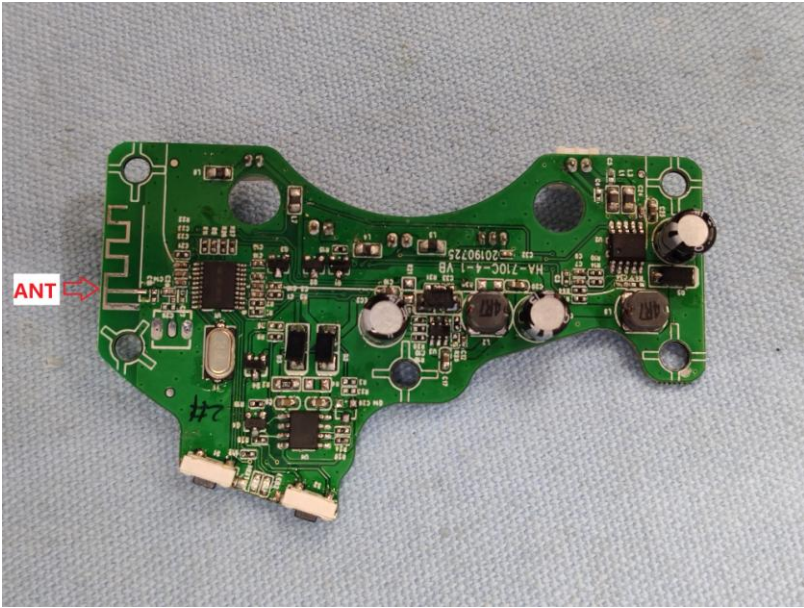
Conducted:						
Item	Test Equipment	Manufacturer	Model No.	Serial No.	Cal.Date (mm-dd-yy)	Cal.Due date (mm-dd-yy)
1	MXA Signal Analyzer	Agilent	N9020A	GTS566	June. 27 2018	June. 26 2019
2	EMI Test Receiver	R&S	ESCI 7	GTS552	June. 27 2018	June. 26 2019
3	Spectrum Analyzer	Agilent	E4440A	GTS533	June. 27 2018	June. 26 2019
4	MXG vector Signal Generator	Agilent	N5182A	GTS567	June. 27 2018	June. 26 2019
5	ESG Analog Signal Generator	Agilent	E4428C	GTS568	June. 27 2018	June. 26 2019
6	USB RF Power Sensor	DARE	RPR3006W	GTS569	June. 27 2018	June. 26 2019
7	RF Switch Box	Shongyi	RFSW3003328	GTS571	June. 27 2018	June. 26 2019
8	Programmable Constant Temp & Humi Test Chamber	WEWON	WHTH-150L-40-880	GTS572	June. 27 2018	June. 26 2019

Conducted Emission						
Item	Test Equipment	Manufacturer	Model No.	Inventory No.	Cal.Date (mm-dd-yy)	Cal.Due date (mm-dd-yy)
1	Shielding Room	ZhongYu Electron	7.3(L)x3.1(W)x2.9(H)	GTS252	May.16 2014	May.15 2019
2	EMI Test Receiver	R&S	ESCI 7	GTS552	June. 27 2018	June. 26 2019
3	Coaxial Switch	ANRITSU CORP	MP59B	GTS225	June. 27 2018	June. 26 2019
4	Artificial Mains Network	SCHWARZBECK MESS	NSLK8127	GTS226	June. 27 2018	June. 26 2019
5	Coaxial Cable	GTS	N/A	GTS227	N/A	N/A
6	EMI Test Software	AUDIX	E3	N/A	N/A	N/A
7	Thermo meter	KTJ	TA328	GTS233	June. 27 2018	June. 26 2019
8	Absorbing clamp	Elektronik-Feinmechanik	MDS21	GTS229	June. 27 2018	June. 26 2019

General used equipment:						
Item	Test Equipment	Manufacturer	Model No.	Inventory No.	Cal.Date (mm-dd-yy)	Cal.Due date (mm-dd-yy)
1	Humidity/ Temperature Indicator	Shanghai	ZJ1-2B	GTS243	June. 27 2018	June. 26 2019
2	Barometer	ChangChun	DYM3	GTS255	June. 27 2018	June. 26 2019

7 Test results and Measurement Data

7.1 Antenna requirement

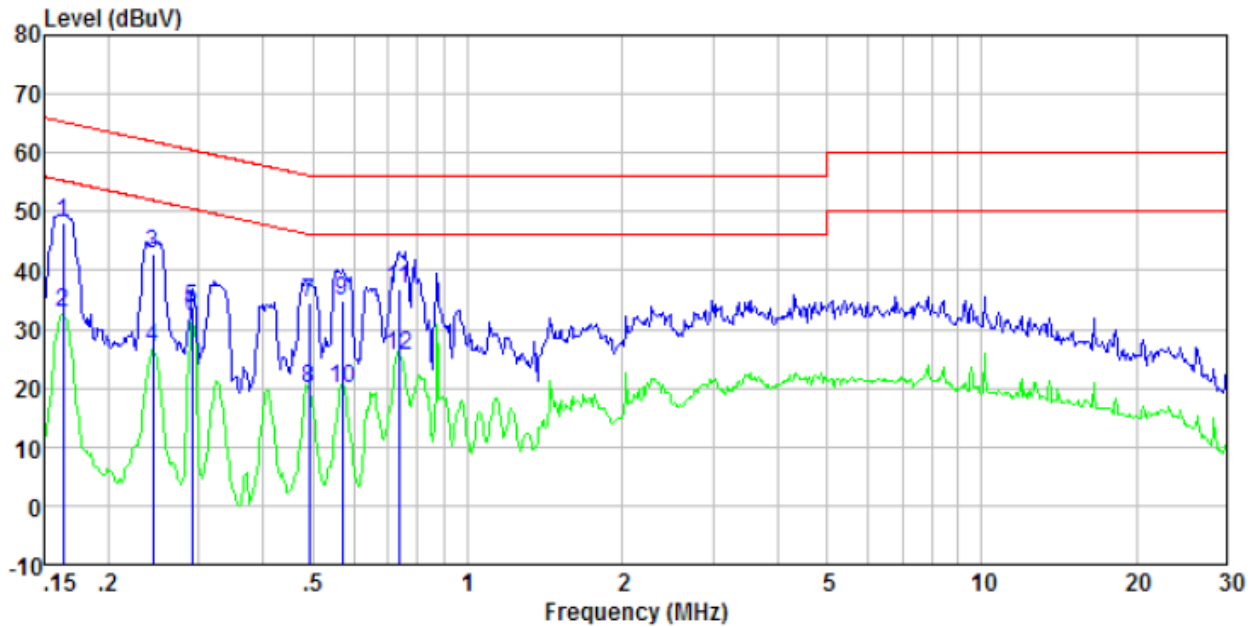
Standard requirement:	FCC Part15 C Section 15.203
15.203 requirement: An intentional radiator shall be designed to ensure that no antenna other than that furnished by the responsible party shall be used with the device. The use of a permanently attached antenna or of an antenna that uses a unique coupling to the intentional radiator, the manufacturer may design the unit so that a broken antenna can be replaced by the user, but the use of a standard antenna jack or electrical connector is prohibited.	
EUT Antenna: <i>The antenna is PCB antenna, the best case gain of the antenna is 1.2dBi</i>	
	

7.2 Conducted Emissions

Test Requirement:	FCC Part15 C Section 15.207														
Test Method:	ANSI C63.10:2013														
Test Frequency Range:	150KHz to 30MHz														
Class / Severity:	Class B														
Receiver setup:	RBW=9KHz, VBW=30KHz, Sweep time=auto														
Limit:	<table border="1"> <thead> <tr> <th rowspan="2">Frequency range (MHz)</th> <th colspan="2">Limit (dBuV)</th> </tr> <tr> <th>Quasi-peak</th> <th>Average</th> </tr> </thead> <tbody> <tr> <td>0.15-0.5</td> <td>66 to 56*</td> <td>56 to 46*</td> </tr> <tr> <td>0.5-5</td> <td>56</td> <td>46</td> </tr> <tr> <td>5-30</td> <td>60</td> <td>50</td> </tr> </tbody> </table> <p>* Decreases with the logarithm of the frequency.</p>	Frequency range (MHz)	Limit (dBuV)		Quasi-peak	Average	0.15-0.5	66 to 56*	56 to 46*	0.5-5	56	46	5-30	60	50
Frequency range (MHz)	Limit (dBuV)														
	Quasi-peak	Average													
0.15-0.5	66 to 56*	56 to 46*													
0.5-5	56	46													
5-30	60	50													
Test setup:	<p><i>Remark:</i> E.U.T: Equipment Under Test LISN: Line Impedance Stabilization Network Test table height=0.8m</p>														
Test procedure:	<ol style="list-style-type: none"> 1. The EUT and simulators are connected to the main power through a line impedance stabilization network (L.I.S.N.). This provides a 50ohm/50uH coupling impedance for the measuring equipment. 2. The peripheral devices are also connected to the main power through a LISN that provides a 50ohm/50uH coupling impedance with 50ohm termination. (Please refer to the block diagram of the test setup and photographs). 3. Both sides of A.C. line are checked for maximum conducted interference. In order to find the maximum emission, the relative positions of equipment and all of the interface cables must be changed according to ANSI C63.10: 2013 on conducted measurement. 														
Test Instruments:	Refer to section 6.0 for details														
Test mode:	Refer to section 5.2 for details														
Test voltage:	AC120V 60Hz														
Test results:	Pass														

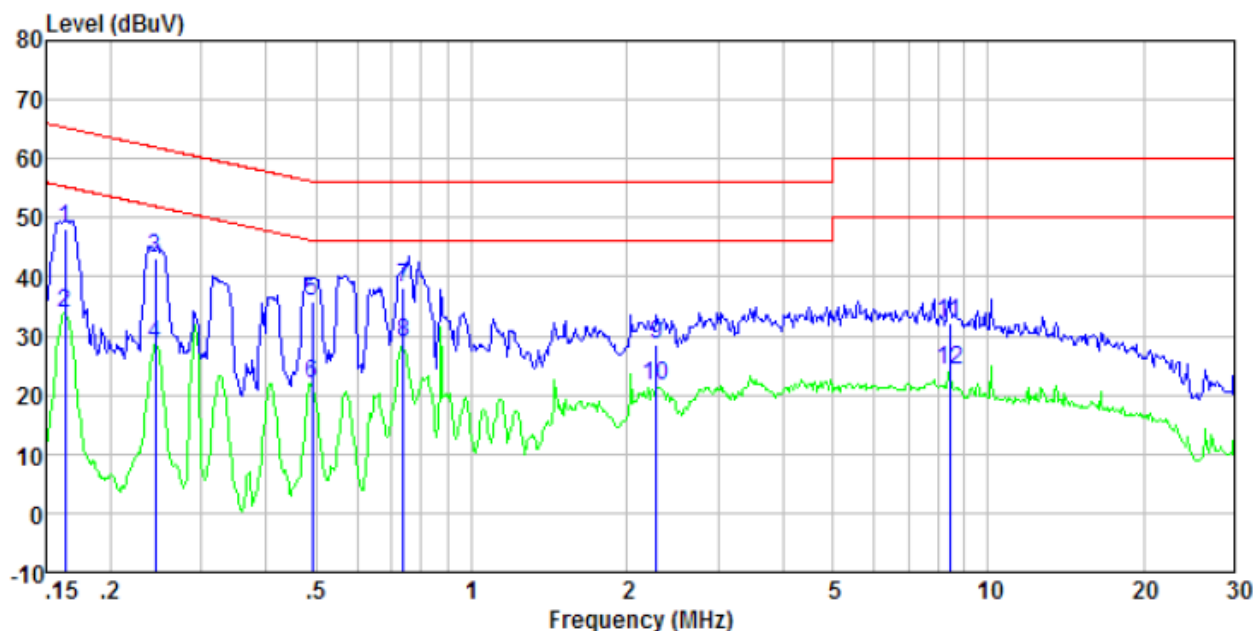
Measurement data

Mode:	Transmitting mode	Test by:	Jason
Temp./Hum.(%RH):	26°C/56%RH	Probe:	Line



Freq MHz	Reading level dBuV	LISN/ISN factor dB/m	Cable loss dB	Level dBuV	Limit level dBuV	Over limit dB	Remark
0.16	47.51	0.40	0.08	47.99	65.30	-17.31	QP
0.16	32.25	0.40	0.08	32.73	55.30	-22.57	Average
0.24	42.26	0.40	0.11	42.77	61.95	-19.18	QP
0.24	26.41	0.40	0.11	26.92	51.95	-25.03	Average
0.29	33.01	0.40	0.10	33.51	60.50	-26.99	QP
0.29	31.66	0.40	0.10	32.16	50.50	-18.34	Average
0.49	34.14	0.32	0.11	34.57	56.14	-21.57	QP
0.49	19.48	0.32	0.11	19.91	46.14	-26.23	Average
0.57	34.50	0.29	0.12	34.91	56.00	-21.09	QP
0.57	19.34	0.29	0.12	19.75	46.00	-26.25	Average
0.74	36.49	0.25	0.13	36.87	56.00	-19.13	QP
0.74	25.31	0.25	0.13	25.69	46.00	-20.31	Average

Mode:	Transmitting mode	Test by:	Jason
Temp./Hum.(%RH):	26°C/56%RH	Probe:	Neutral

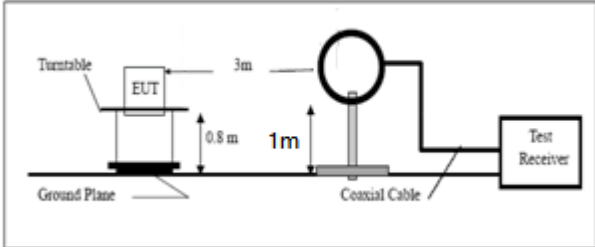


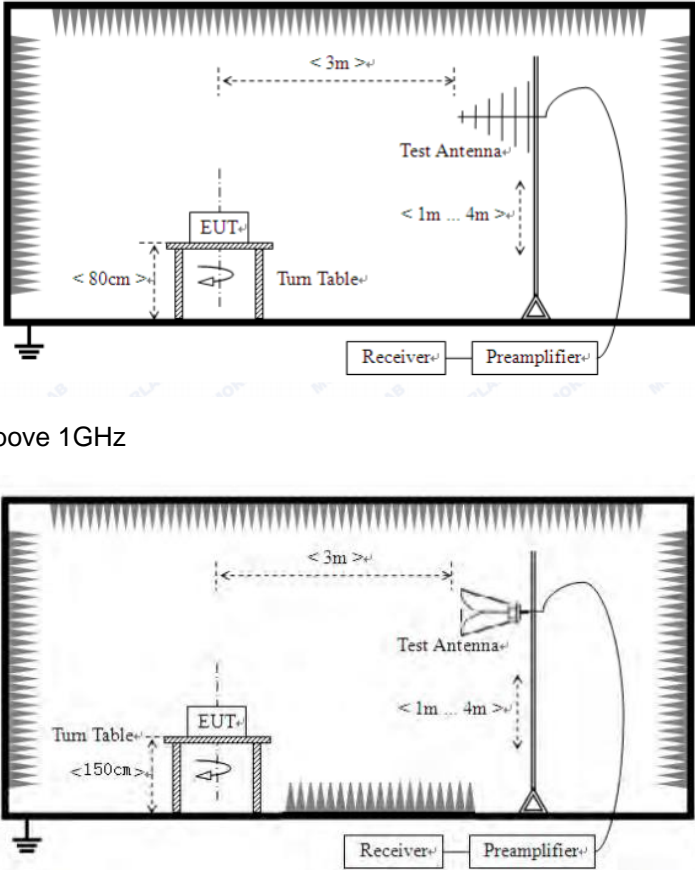
Freq MHz	Reading level dBuV	LISN/ISN factor dB/m	Cable loss dB	Level dBuV	Limit level dBuV	Over limit dB	Remark
0.16	47.66	0.40	0.08	48.14	65.30	-17.16	QP
0.16	33.36	0.40	0.08	33.84	55.30	-21.46	Average
0.24	42.48	0.40	0.11	42.99	61.95	-18.96	QP
0.24	28.03	0.40	0.11	28.54	51.95	-23.41	Average
0.49	35.56	0.32	0.11	35.99	56.14	-20.15	QP
0.49	21.32	0.32	0.11	21.75	46.14	-24.39	Average
0.74	37.70	0.25	0.13	38.08	56.00	-17.92	QP
0.74	28.37	0.25	0.13	28.75	46.00	-17.25	Average
2.28	28.30	0.20	0.18	28.68	56.00	-27.32	QP
2.28	21.29	0.20	0.18	21.67	46.00	-24.33	Average
8.41	31.64	0.20	0.19	32.03	60.00	-27.97	QP
8.41	23.90	0.20	0.19	24.29	50.00	-25.71	Average

Notes:

1. An initial pre-scan was performed on the line and neutral lines with peak detector.
2. Quasi-Peak and Average measurement were performed at the frequencies with maximized peak emission.
3. Final Level = Receiver Read level + LISN Factor + Cable Loss
4. If the average limit is met when using a quasi-peak detector receiver, the EUT shall be deemed to meet both limits and measurement with the average detector receiver is unnecessary.

7.3 Radiated Emission Method

Test Requirement:	FCC Part15 C Section 15.209				
Test Method:	ANSI C63.10:2013				
Test Frequency Range:	9kHz to 25GHz				
Test site:	Measurement Distance: 3m				
Receiver setup:	Frequency	Detector	RBW	VBW	Remark
	9kHz-150kHz	Quasi-peak	200Hz	300Hz	Quasi-peak Value
	150kHz-30MHz	Quasi-peak	9kHz	10kHz	Quasi-peak Value
	30MHz-1GHz	Quasi-peak	120KHz	300KHz	Quasi-peak Value
	Above 1GHz	Peak	1MHz	3MHz	Peak Value
Peak		1MHz	10Hz	Average Value	
Limit: (Field strength of the fundamental signal)	Frequency	Limit (dBuV/m @3m)		Remark	
	2400MHz-2483.5MHz	94.00		Average Value	
		114.00		Peak Value	
Limit: (Spurious Emissions)	Frequency	Limit (uV/m)		Remark	
	0.009MHz-0.490MHz	2400/F(kHz) @300m		Quasi-peak Value	
	0.490MHz-1.705MHz	24000/F(kHz) @30m		Quasi-peak Value	
	1.705MHz-30.0MHz	30 @30m		Quasi-peak Value	
	30MHz-88MHz	100 @3m		Quasi-peak Value	
	88MHz-216MHz	150 @3m		Quasi-peak Value	
	216MHz-960MHz	200 @3m		Quasi-peak Value	
	960MHz-1GHz	500 @3m		Quasi-peak Value	
	Above 1GHz	500 @3m		Average Value	
5000 @3m		Peak Value			
Limit: (band edge)	Emissions radiated outside of the specified frequency bands, except for harmonics, shall be attenuated by at least 50 dB below the level of the fundamental or to the general radiated emission limits in Section 15.209, whichever is the lesser attenuation.				
Test setup:	<p>Below 1GHz</p> 				

	 <p>Above 1GHz</p>
<p>Test Procedure:</p>	<ol style="list-style-type: none"> 1. The EUT was placed on the top of a rotating table (0.8m for below 1G and 1.5m for above 1G) above the ground at a 3 meter camber. The table was rotated 360 degrees to determine the position of the highest radiation. 2. The EUT was set 3 meters away from the interference-receiving antenna, which was mounted on the top of a variable-height antenna tower. 3. The antenna height is varied from one meter to four meters above the ground to determine the maximum value of the field strength. Both horizontal and vertical polarizations of the antenna are set to make the measurement. 4. For each suspected emission, the EUT was arranged to its worst case and then the antenna was tuned to heights from 1 meter to 4 meters and the rota table was turned from 0 degrees to 360 degrees to find the maximum reading. 5. The test-receiver system was set to Peak Detect Function and Specified Bandwidth with Maximum Hold Mode. 6. If the emission level of the EUT in peak mode was 10dB lower than the limit specified, then testing could be stopped and the peak values of the EUT would be reported. Otherwise the emissions that did not have 10dB margin would be re-tested one by one using peak, quasi-peak or average method as specified and then reported in a data sheet.
<p>Test Instruments:</p>	<p>Refer to section 6.0 for details</p>

Test mode:	Refer to section 5.2 for details
Test voltage:	AC120V 60Hz
Test results:	Pass

Measurement data:

7.3.1 Field Strength of The Fundamental Signal

Peak value:

Frequency (MHz)	Read Level (dBuV)	Antenna Factor (dB/m)	Cable Loss (dB)	Preamp Factor (dB)	Level (dBuV/m)	Limit Line (dBuV/m)	Over Limit (dB)	polarization
2402.00	89.13	27.58	5.39	30.18	91.92	114.00	-22.08	Vertical
2402.00	87.05	27.58	5.39	30.18	89.84	114.00	-24.16	Horizontal
2441.00	87.71	27.55	5.43	30.06	90.63	114.00	-23.37	Vertical
2441.00	86.11	27.55	5.43	30.06	89.03	114.00	-24.97	Horizontal
2480.00	90.07	27.52	5.47	29.93	93.13	114.00	-20.87	Vertical
2480.00	87.31	27.52	5.47	29.93	90.37	114.00	-23.63	Horizontal

Average value:

Frequency (MHz)	Read Level (dBuV)	Antenna Factor (dB/m)	Cable Loss (dB)	Preamp Factor (dB)	Level (dBuV/m)	Limit Line (dBuV/m)	Over Limit (dB)	polarization
2402.00	78.29	27.58	5.39	30.18	81.08	94.00	-12.92	Vertical
2402.00	76.24	27.58	5.39	30.18	79.03	94.00	-14.97	Horizontal
2441.00	76.69	27.55	5.43	30.06	79.61	94.00	-14.39	Vertical
2441.00	73.92	27.55	5.43	30.06	76.84	94.00	-17.16	Horizontal
2480.00	79.18	27.52	5.47	29.93	82.24	94.00	-11.76	Vertical
2480.00	76.49	27.52	5.47	29.93	79.55	94.00	-14.45	Horizontal

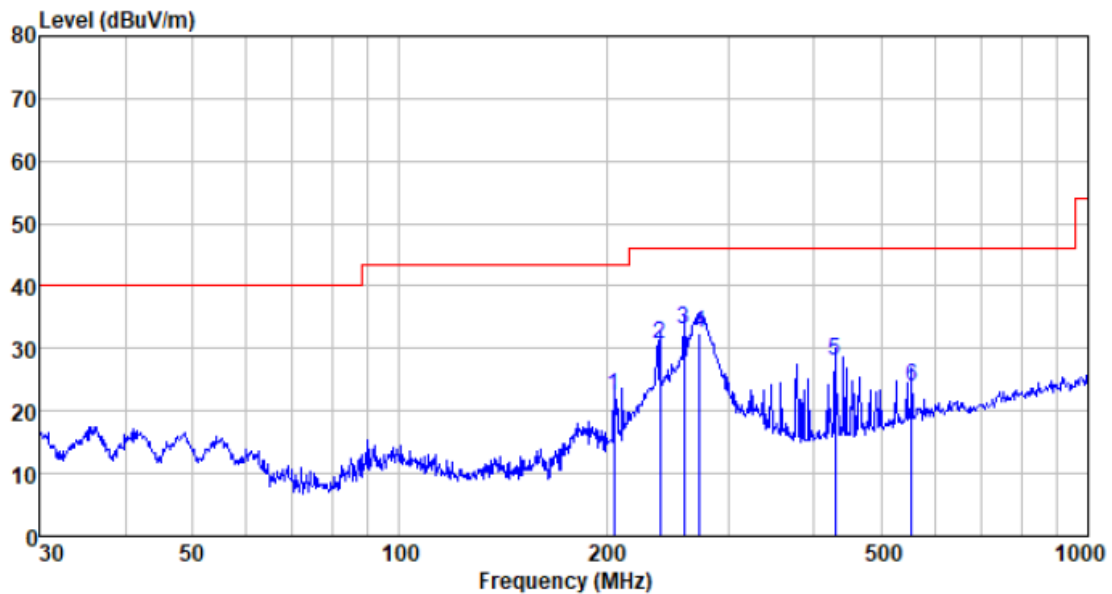
7.3.2 Spurious emissions

■ Below 30MHz

The emission from 9 kHz to 30MHz was pre-tested and found the result was 20dB lower than the limit, and according to 15.31(o), the test result no need to reported.

■ Below 1GHz

Mode:	Transmitting mode	Test by:	Jason
Temp./Hum.(%RH):	26°C/56%RH	Polarization:	Horizontal

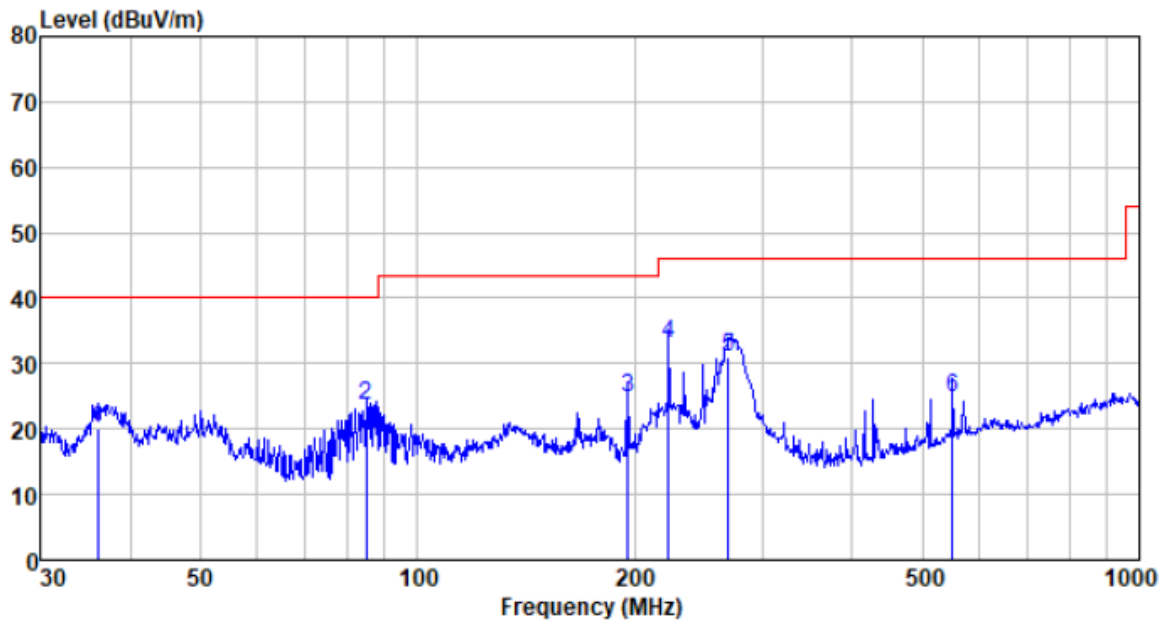


Freq MHz	Reading level dBuV	Antenna factor dB/m	Cable loss dB	Preamp factor dB	level dBuV	Limit level dBuV/m	Over limit dB	Remark
204.955	47.21	10.58	1.87	37.34	22.32	43.50	-21.18	QP
239.147	54.30	11.82	2.06	37.37	30.81	46.00	-15.19	QP
259.234	55.88	12.44	2.17	37.39	33.10	46.00	-12.90	QP
273.234	54.90	12.87	2.24	37.40	32.61	46.00	-13.39	QP
429.523	46.64	15.95	2.99	37.52	28.06	46.00	-17.94	QP
554.825	39.32	18.57	3.54	37.53	23.90	46.00	-22.10	QP

Remark:

Final Level = Receiver Read level + Antenna Factor + Cable Loss – Pre-amplifier Factor

Mode:	Transmitting mode	Test by:	Jason
Temp./Hum.(%H):	26°C/56%RH	Polarization:	Vertical



Freq MHz	Reading level dBuV	Antenna factor dB/m	Cable loss dB	Preamp factor dB	level dBuV	Limit level dBuV/m	Over limit dB	Remark
36.001	43.21	11.52	0.62	35.42	19.93	40.00	-20.07	QP
84.999	50.10	9.05	1.07	36.59	23.63	40.00	-16.37	QP
195.822	50.15	10.17	1.82	37.31	24.83	43.50	-18.67	QP
222.950	57.29	11.27	1.98	37.35	33.19	46.00	-12.81	QP
269.428	53.41	12.76	2.22	37.40	30.99	46.00	-15.01	QP
550.948	40.45	18.45	3.53	37.53	24.90	46.00	-21.10	QP

Remark:

Final Level = Receiver Read level + Antenna Factor + Cable Loss – Preamplifier Factor

■ Above 1GHz

Test channel:	Lowest channel
---------------	----------------

Peak value:

Frequency (MHz)	Read Level (dBuV)	Antenna Factor (dB/m)	Cable Loss (dB)	Preamp Factor (dB)	Level (dBuV/m)	Limit Line (dBuV/m)	Over Limit (dB)	polarization
4804.00	35.11	31.78	8.60	32.09	43.40	74.00	-30.60	Vertical
7206.00	30.37	36.15	11.65	32.00	46.17	74.00	-27.83	Vertical
9608.00	30.17	37.95	14.14	31.62	50.64	74.00	-23.36	Vertical
12010.00	*					74.00		Vertical
14412.00	*					74.00		Vertical
4804.00	38.95	31.78	8.60	32.09	47.24	74.00	-26.76	Horizontal
7206.00	31.93	36.15	11.65	32.00	47.73	74.00	-26.27	Horizontal
9608.00	29.39	37.95	14.14	31.62	49.86	74.00	-24.14	Horizontal
12010.00	*					74.00		Horizontal
14412.00	*					74.00		Horizontal

Average value:

Frequency (MHz)	Read Level (dBuV)	Antenna Factor (dB/m)	Cable Loss (dB)	Preamp Factor (dB)	Level (dBuV/m)	Limit Line (dBuV/m)	Over Limit (dB)	polarization
4804.00	24.34	31.78	8.60	32.09	32.63	54.00	-21.37	Vertical
7206.00	19.31	36.15	11.65	32.00	35.11	54.00	-18.89	Vertical
9608.00	18.52	37.95	14.14	31.62	38.99	54.00	-15.01	Vertical
12010.00	*					54.00		Vertical
14412.00	*					54.00		Vertical
4804.00	28.32	31.78	8.60	32.09	36.61	54.00	-17.39	Horizontal
7206.00	21.34	36.15	11.65	32.00	37.14	54.00	-16.86	Horizontal
9608.00	18.07	37.95	14.14	31.62	38.54	54.00	-15.46	Horizontal
12010.00	*					54.00		Horizontal
14412.00	*					54.00		Horizontal

Remark:

1. Final Level = Receiver Read level + Antenna Factor + Cable Loss – Preamplifier Factor
2. The emission levels of other frequencies are very lower than the limit and not show in test report.
3. “*”, means this data is the too weak instrument of signal is unable to test.

Test channel:	Middle channel
---------------	----------------

Peak value:

Frequency (MHz)	Read Level (dBuV)	Antenna Factor (dB/m)	Cable Loss (dB)	Preamp Factor (dB)	Level (dBuV/m)	Limit Line (dBuV/m)	Over Limit (dB)	polarization
4882.00	35.00	31.85	8.67	32.12	43.40	74.00	-30.60	Vertical
7323.00	30.30	36.37	11.72	31.89	46.50	74.00	-27.50	Vertical
9764.00	30.11	38.35	14.25	31.62	51.09	74.00	-22.91	Vertical
12205.00	*					74.00		Vertical
14646.00	*					74.00		Vertical
4882.00	38.81	31.85	8.67	32.12	47.21	74.00	-26.79	Horizontal
7323.00	31.85	36.37	11.72	31.89	48.05	74.00	-25.95	Horizontal
9764.00	29.31	38.35	14.25	31.62	50.29	74.00	-23.71	Horizontal
12205.00	*					74.00		Horizontal
14646.00	*					74.00		Horizontal

Average value:

Frequency (MHz)	Read Level (dBuV)	Antenna Factor (dB/m)	Cable Loss (dB)	Preamp Factor (dB)	Level (dBuV/m)	Limit Line (dBuV/m)	Over Limit (dB)	polarization
4882.00	24.25	31.85	8.67	32.12	32.65	54.00	-21.35	Vertical
7323.00	19.25	36.37	11.72	31.89	35.45	54.00	-18.55	Vertical
9764.00	18.47	38.35	14.25	31.62	39.45	54.00	-14.55	Vertical
12205.00	*					54.00		Vertical
14646.00	*					54.00		Vertical
4882.00	28.22	31.85	8.67	32.12	36.62	54.00	-17.38	Horizontal
7323.00	21.27	36.37	11.72	31.89	37.47	54.00	-16.53	Horizontal
9764.00	18.01	38.35	14.25	31.62	38.99	54.00	-15.01	Horizontal
12205.00	*					54.00		Horizontal
14646.00	*					54.00		Horizontal

Remark:

1. Final Level = Receiver Read level + Antenna Factor + Cable Loss – Preamplifier Factor
2. The emission levels of other frequencies are very lower than the limit and not show in test report.
3. “*”, means this data is the too weak instrument of signal is unable to test.

Test channel:	Highest channel
---------------	-----------------

Peak value:

Frequency (MHz)	Read Level (dBuV)	Antenna Factor (dB/m)	Cable Loss (dB)	Preamp Factor (dB)	Level (dBuV/m)	Limit Line (dBuV/m)	Over Limit (dB)	polarization
4960.00	34.62	31.93	8.73	32.16	43.12	74.00	-30.88	Vertical
7440.00	30.05	36.59	11.79	31.78	46.65	74.00	-27.35	Vertical
9920.00	29.88	38.81	14.38	31.88	51.19	74.00	-22.81	Vertical
12400.00	*					74.00		Vertical
14880.00	*					74.00		Vertical
4960.00	38.35	31.93	8.73	32.16	46.85	74.00	-27.15	Horizontal
7440.00	31.56	36.59	11.79	31.78	48.16	74.00	-25.84	Horizontal
9920.00	29.05	38.81	14.38	31.88	50.36	74.00	-23.64	Horizontal
12400.00	*					74.00		Horizontal
14880.00	*					74.00		Horizontal

Average value:

Frequency (MHz)	Read Level (dBuV)	Antenna Factor (dB/m)	Cable Loss (dB)	Preamp Factor (dB)	Level (dBuV/m)	Limit Line (dBuV/m)	Over Limit (dB)	polarization
4960.00	23.94	31.93	8.73	32.16	32.44	54.00	-21.56	Vertical
7440.00	19.04	36.59	11.79	31.78	35.64	54.00	-18.36	Vertical
9920.00	18.28	38.81	14.38	31.88	39.59	54.00	-14.41	Vertical
12400.00	*					54.00		Vertical
14880.00	*					54.00		Vertical
4960.00	27.87	31.93	8.73	32.16	36.37	54.00	-17.63	Horizontal
7440.00	21.04	36.59	11.79	31.78	37.64	54.00	-16.36	Horizontal
9920.00	17.79	38.81	14.38	31.88	39.10	54.00	-14.90	Horizontal
12400.00	*					54.00		Horizontal
14880.00	*					54.00		Horizontal

Remark:

1. Final Level = Receiver Read level + Antenna Factor + Cable Loss – Preamplifier Factor
2. The emission levels of other frequencies are very lower than the limit and not show in test report.
3. “*”, means this data is the too weak instrument of signal is unable to test.

7.3.3 Bandedge emissions

All of the restriction bands were tested, and only the data of worst case was exhibited.

Test channel:	Lowest channel
---------------	----------------

Peak value:

Frequency (MHz)	Read Level (dBuV)	Antenna Factor (dB/m)	Cable Loss (dB)	Preamp Factor (dB)	Level (dBuV/m)	Limit Line (dBuV/m)	Over Limit (dB)	Polarization
2310.00	34.81	27.59	5.38	30.18	37.60	74.00	-36.40	Horizontal
2390.00	35.83	27.59	5.38	30.18	38.62	74.00	-35.38	Horizontal
2400.00	51.61	27.58	5.39	30.18	54.40	74.00	-19.60	Horizontal
2310.00	34.23	27.59	5.38	30.18	37.02	74.00	-36.98	Vertical
2390.00	35.70	27.59	5.38	30.18	38.49	74.00	-35.51	Vertical
2400.00	52.89	27.58	5.39	30.18	55.68	74.00	-18.32	Vertical

Average value:

Frequency (MHz)	Read Level (dBuV)	Antenna Factor (dB/m)	Cable Loss (dB)	Preamp Factor (dB)	Level (dBuV/m)	Limit Line (dBuV/m)	Over Limit (dB)	Polarization
2310.00	26.28	27.59	5.38	30.18	29.07	54.00	-24.93	Horizontal
2390.00	27.97	27.59	5.38	30.18	30.76	54.00	-23.24	Horizontal
2400.00	38.79	27.58	5.39	30.18	41.58	54.00	-12.42	Horizontal
2310.00	26.54	27.59	5.38	30.18	29.33	54.00	-24.67	Vertical
2390.00	27.41	27.59	5.38	30.18	30.20	54.00	-23.80	Vertical
2400.00	39.77	27.58	5.39	30.18	42.56	54.00	-11.44	Vertical

Test channel:	Highest channel
---------------	-----------------

Peak value:

Frequency (MHz)	Read Level (dBuV)	Antenna Factor (dB/m)	Cable Loss (dB)	Preamp Factor (dB)	Level (dBuV/m)	Limit Line (dBuV/m)	Over Limit (dB)	Polarization
2483.50	37.09	27.53	5.47	29.93	40.16	74.00	-33.84	Horizontal
2500.00	37.61	27.55	5.49	29.93	40.72	74.00	-33.28	Horizontal
2483.50	36.76	27.53	5.47	29.93	39.83	74.00	-34.17	Vertical
2500.00	37.93	27.55	5.49	29.93	41.04	74.00	-32.96	Vertical

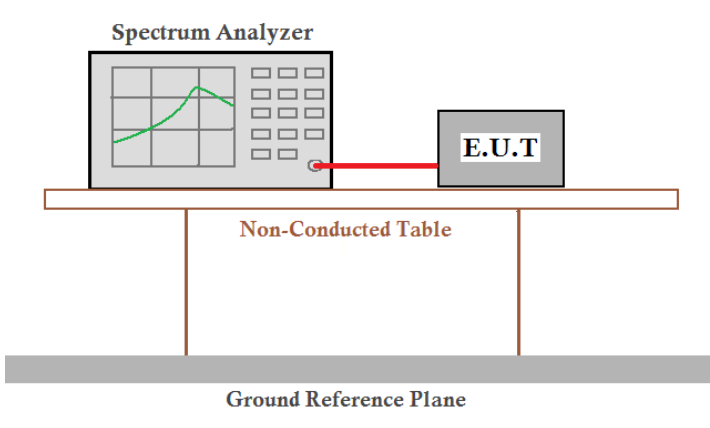
Average value:

Frequency (MHz)	Read Level (dBuV)	Antenna Factor (dB/m)	Cable Loss (dB)	Preamp Factor (dB)	Level (dBuV/m)	Limit Line (dBuV/m)	Over Limit (dB)	Polarization
2483.50	30.71	27.53	5.47	29.93	33.78	54.00	-20.22	Horizontal
2500.00	29.72	27.55	5.49	29.93	32.83	54.00	-21.17	Horizontal
2483.50	31.34	27.53	5.47	29.93	34.41	54.00	-19.59	Vertical
2500.00	29.06	27.55	5.49	29.93	32.17	54.00	-21.83	Vertical

Remark:

1. *Final Level = Receiver Read level + Antenna Factor + Cable Loss – Pre-amplifier Factor*

7.4 20dB Occupy Bandwidth

Test Requirement:	FCC Part15 C Section 15.249/15.215
Test Method:	ANSI C63.10:2013
Limit:	Operation Frequency range 2400MHz~2483.5MHz
Test setup:	 <p>The diagram illustrates the test setup. A Spectrum Analyzer is connected to an E.U.T. (Equipment Under Test) via a red cable. Both are placed on a Non-Conducted Table, which is supported by a Ground Reference Plane.</p>
Test Instruments:	Refer to section 6.0 for details
Test mode:	Refer to section 5.2 for details
Test results:	Pass

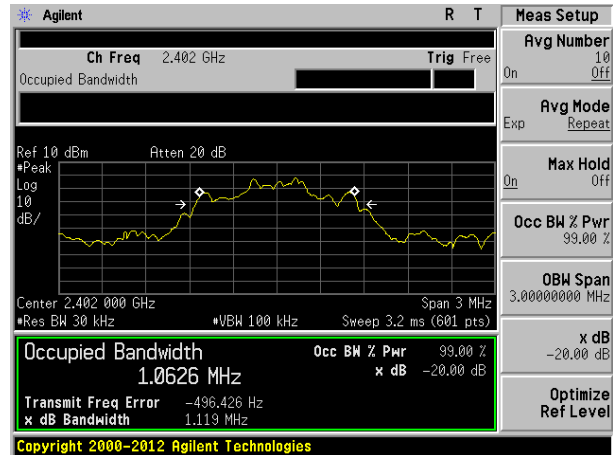
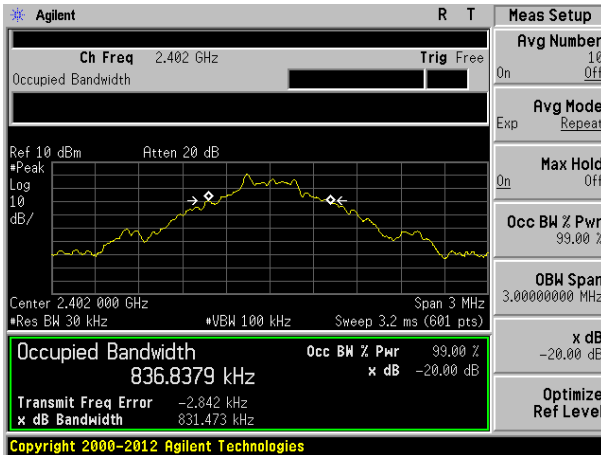
Measurement Data

Test channel	20dB bandwidth(MHz)		Result
	GFSK	$\pi/4$ -DQPSK	
Lowest	0.831	1.119	Pass
Middle	0.834	1.117	Pass
Highest	0.832	1.118	Pass

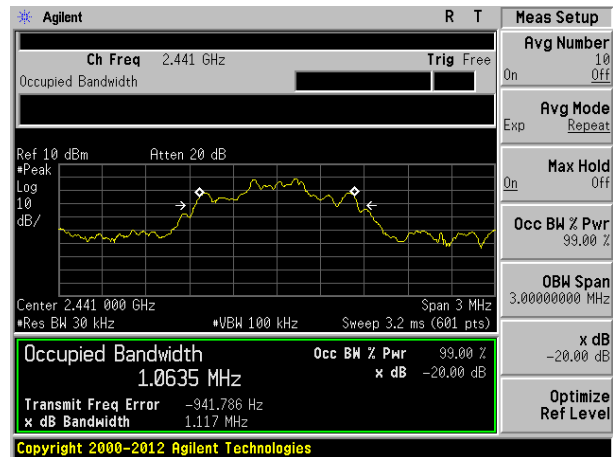
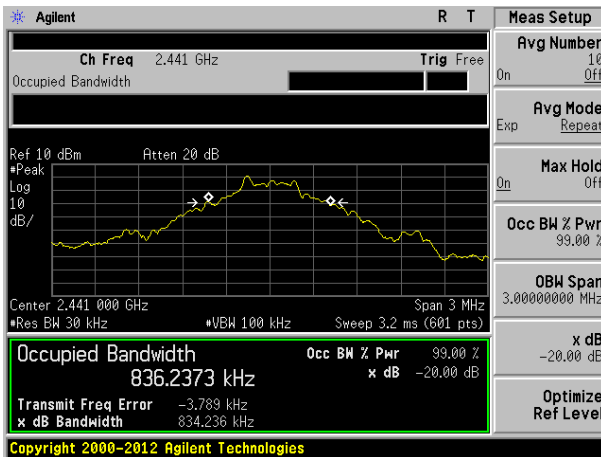
Test plot as follows:

GFSK

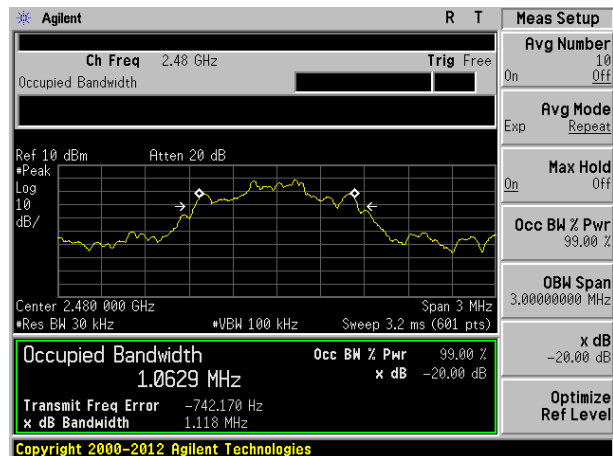
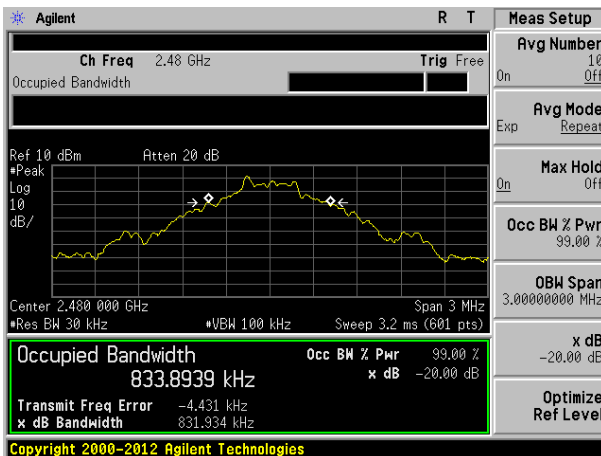
$\pi/4$ -DQPSK



Lowest channel



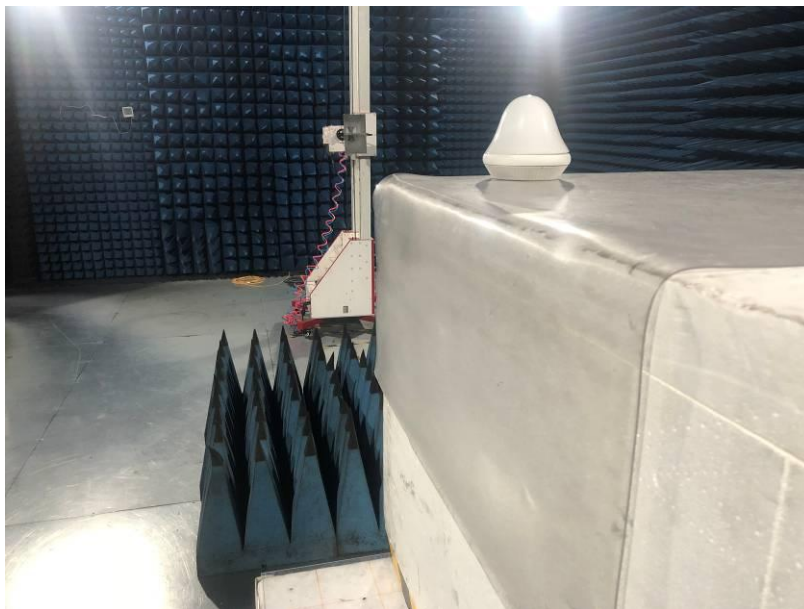
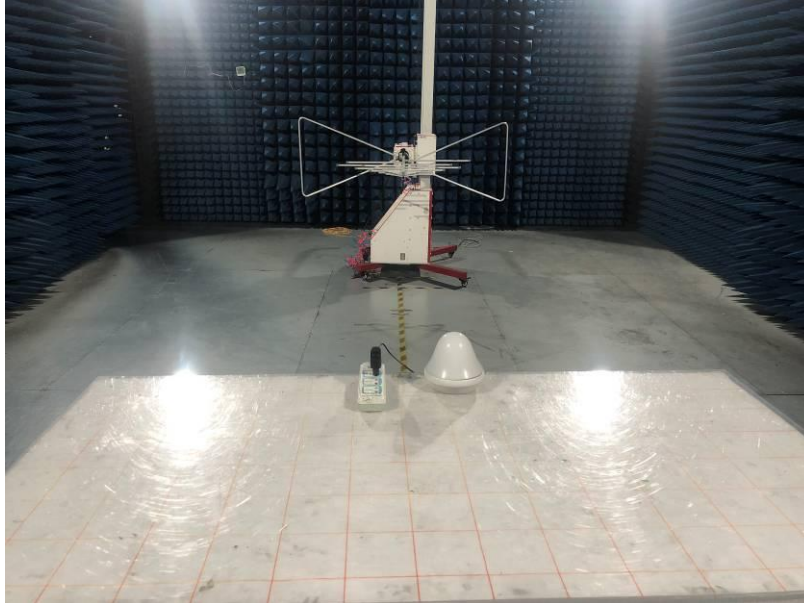
Middle channel



Highest channel

8 Test Setup Photo

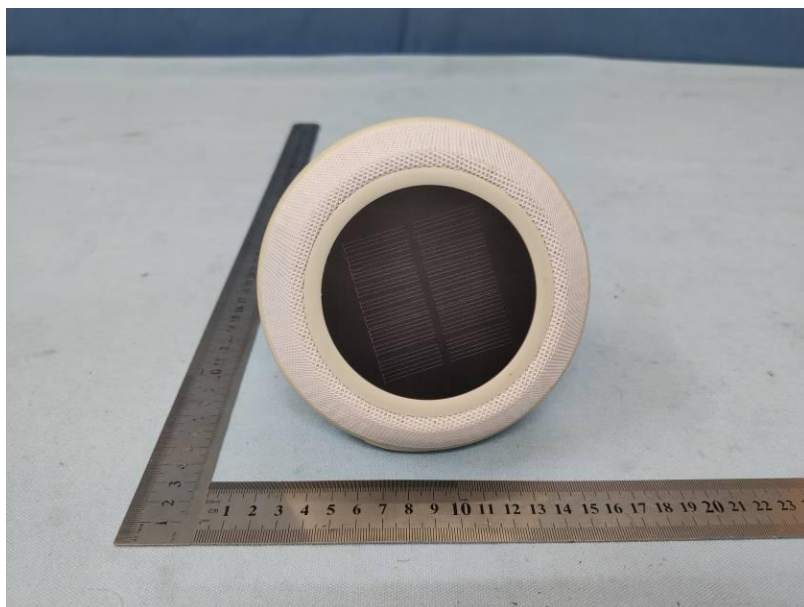
Radiated Emission



Conducted Emission

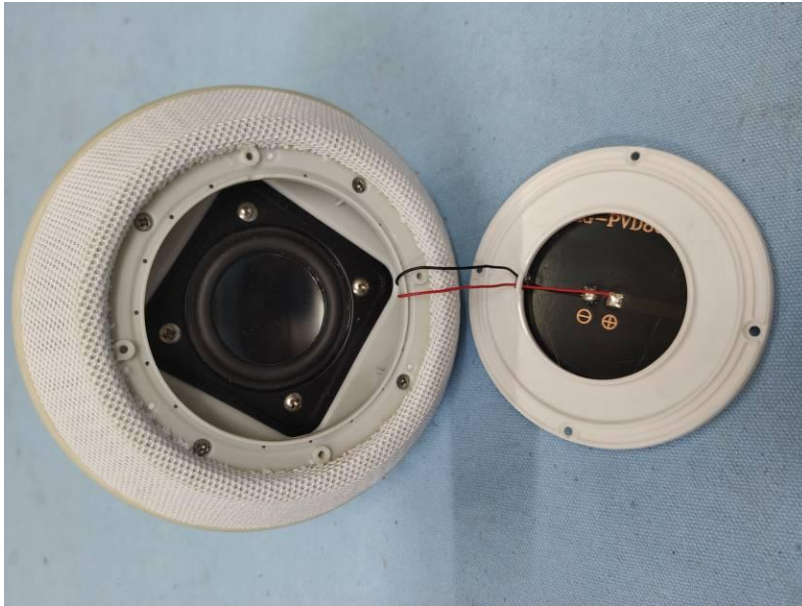


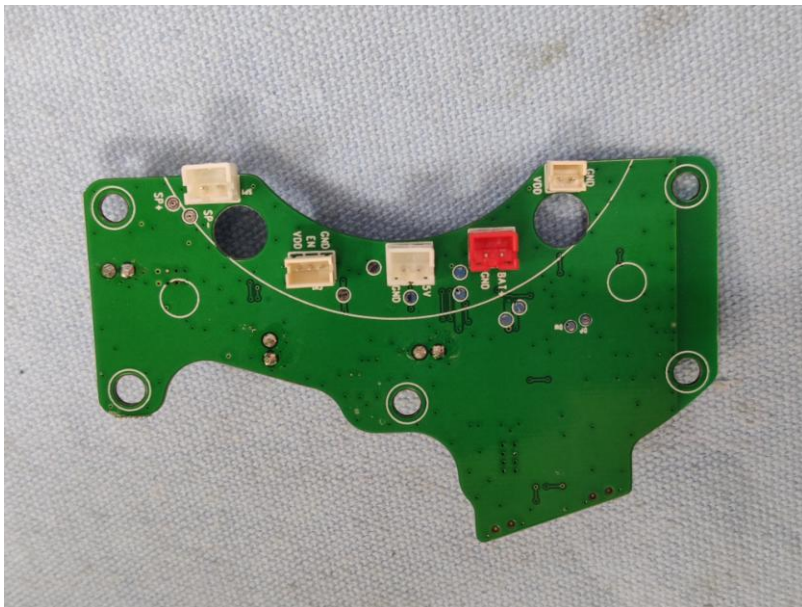
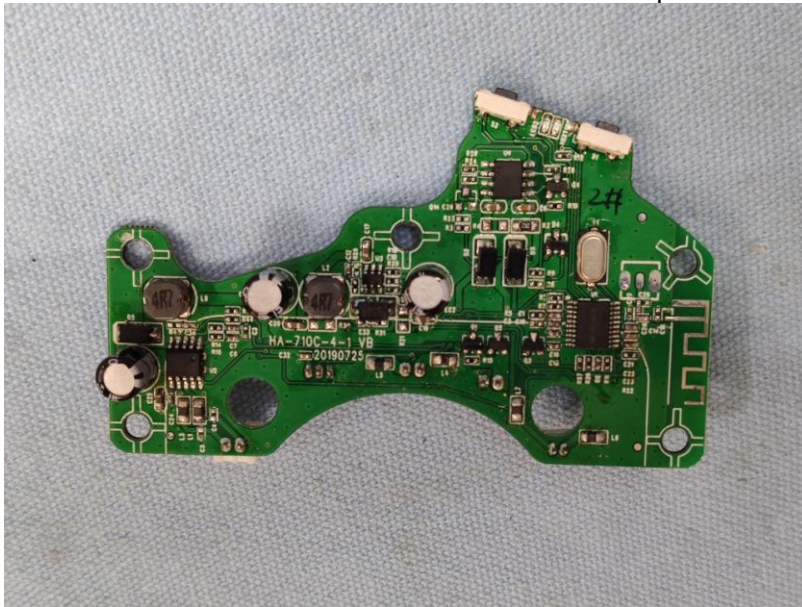
9 EUT Constructional Details

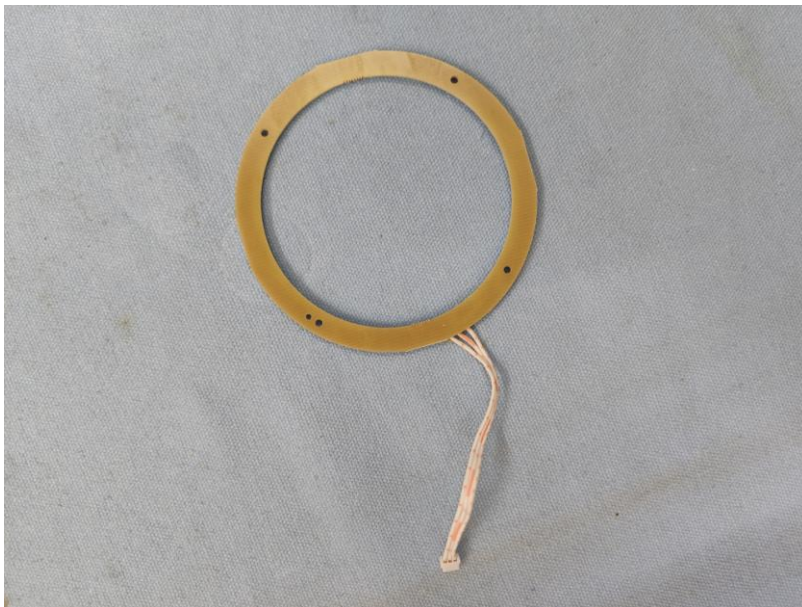
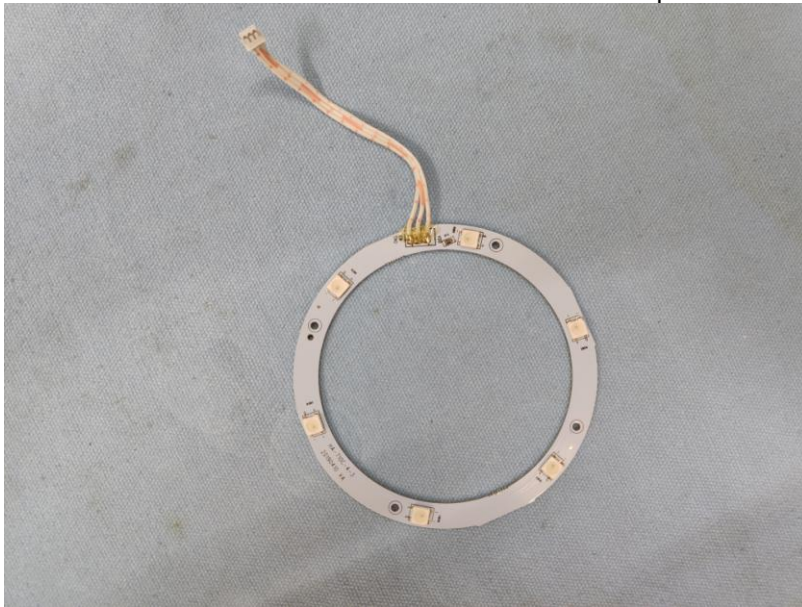




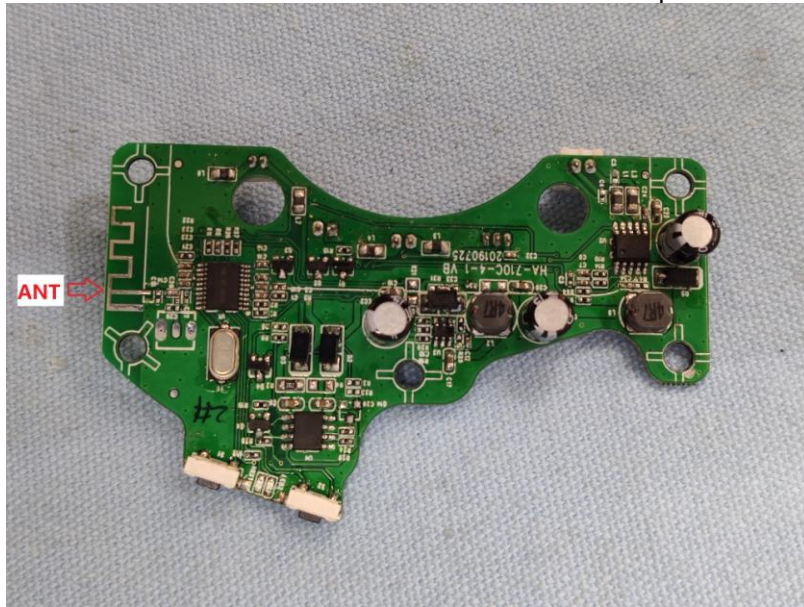












-----End-----