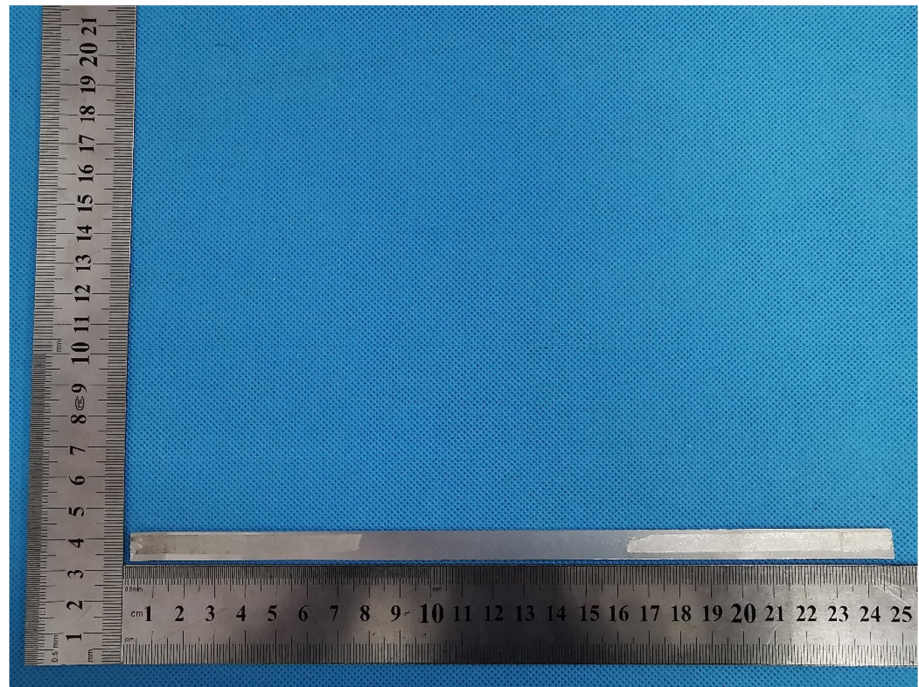
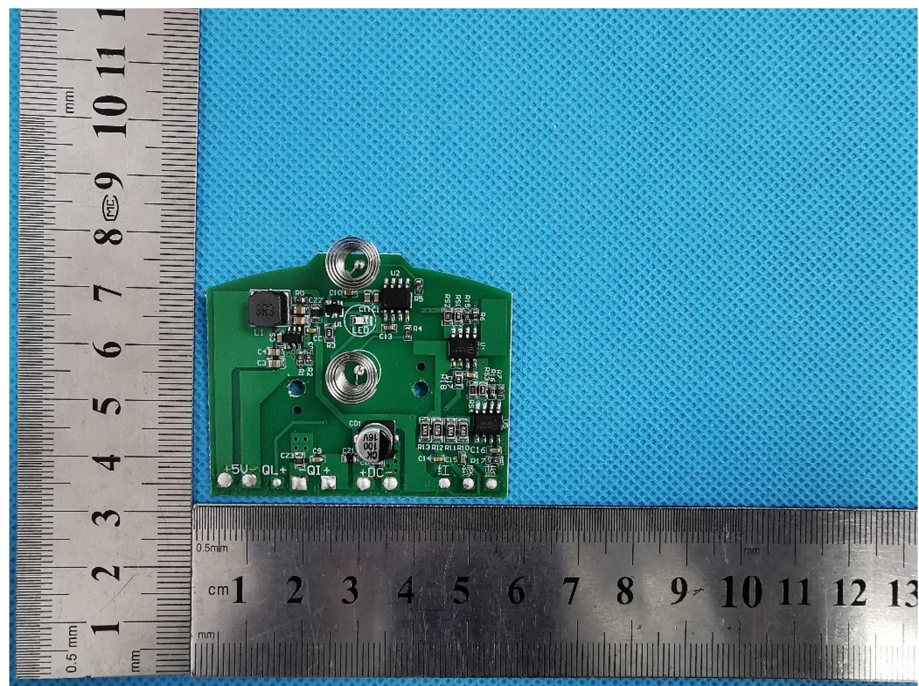
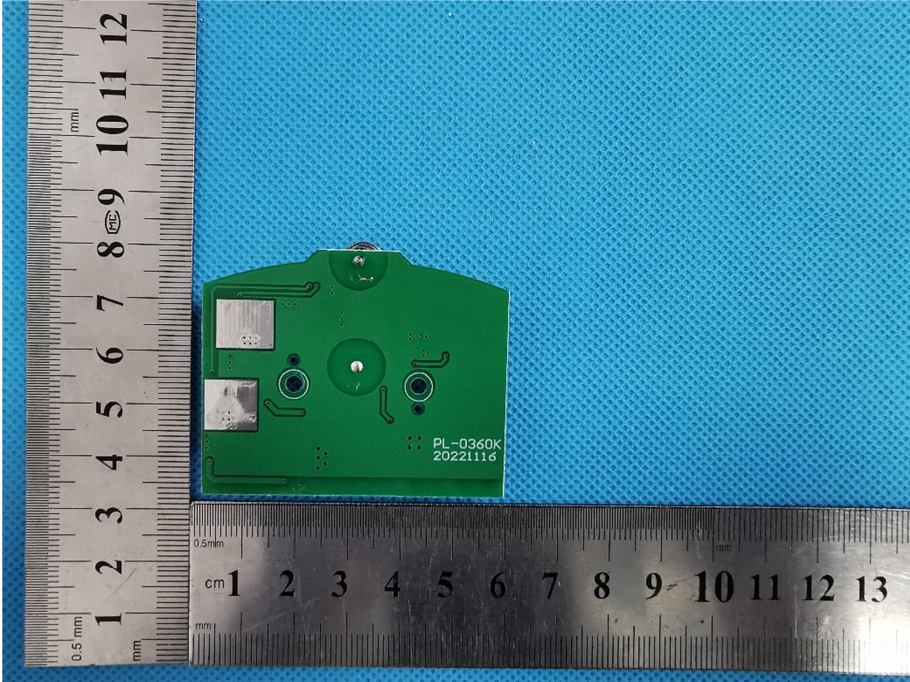
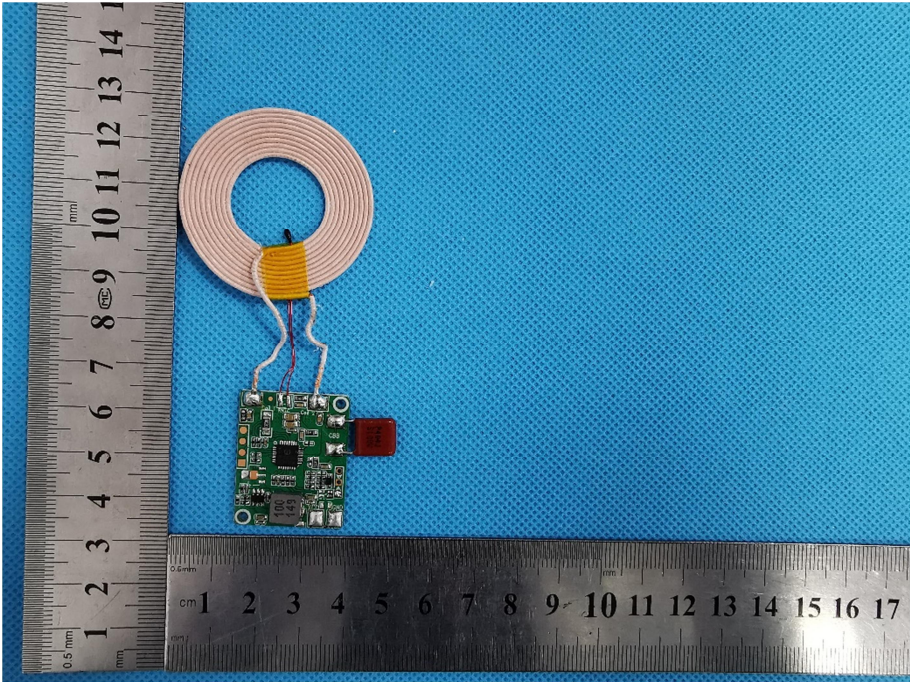


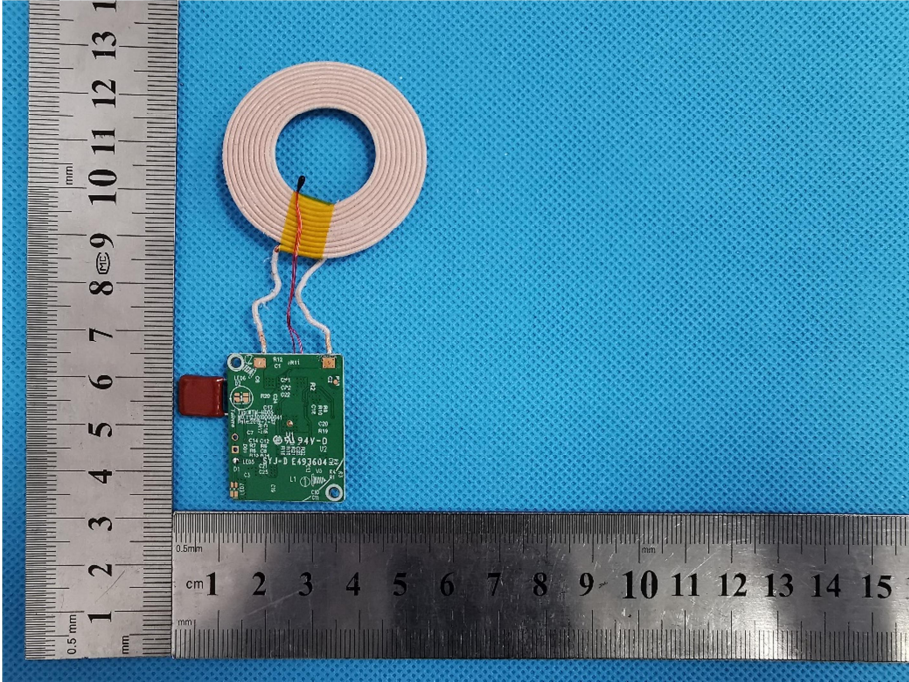
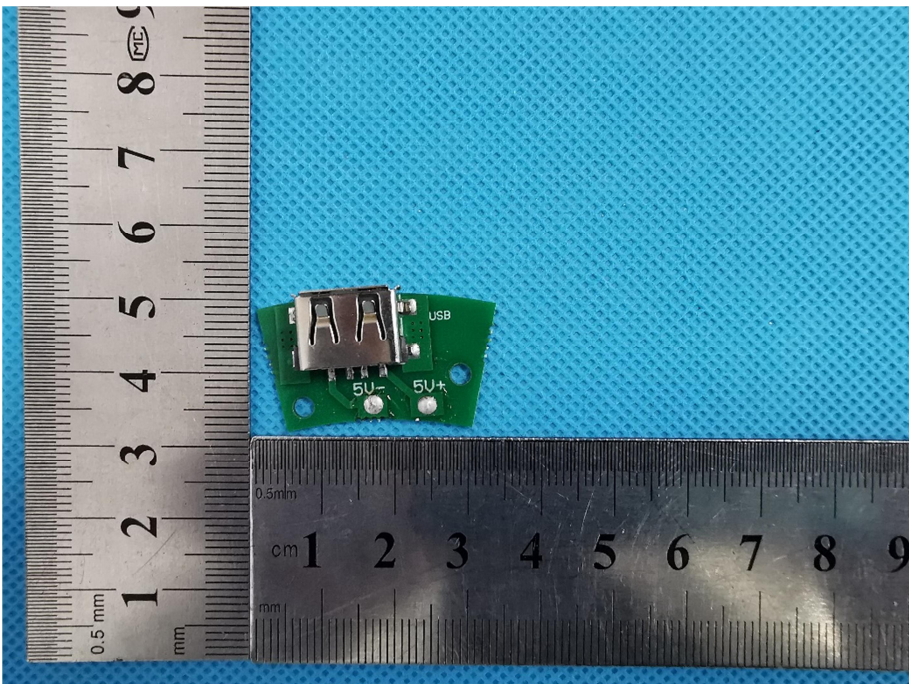
**Solder
Board-Component
View 2**



**Solder
Board-Component
View 3**



<p>Solder Board-Component View 4</p>	 <p>A photograph of a green PCB component with two silver rectangular components on the left side. The component is placed on a blue textured background. A vertical ruler on the left shows millimeter markings from 1 to 12. A horizontal ruler at the bottom shows centimeter markings from 1 to 13. The component has the text "PL-0360K" and "20221116" printed on it.</p>
<p>Solder Board-Component View 5</p>	 <p>A photograph of a green PCB component with a red component and a white ribbon cable. The component is placed on a blue textured background. A vertical ruler on the left shows millimeter markings from 1 to 14. A horizontal ruler at the bottom shows centimeter markings from 1 to 17.</p>

<p>Solder Board-Component View 6</p>	 <p>A photograph showing a green PCB component with a white ribbon cable and a red component, placed on a blue textured surface next to a ruler for scale. The ruler shows centimeters and millimeters. The component has various markings, including '94V-0' and 'E49360425'.</p>
<p>Solder Board-Component View 7</p>	 <p>A photograph showing a green PCB component with a USB connector and two 5V pins, placed on a blue textured surface next to a ruler for scale. The ruler shows centimeters and millimeters. The component has markings including 'USB' and '5V+'.</p>