

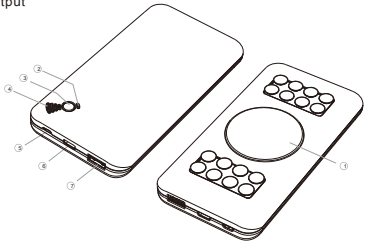
## User Manual

## Note:

Thank you for your acquisition of this compact power bank wireless charger, compatible with all Qi devices like Samsung S7/S7 edge, Samsung S8/S8 edge, iPhone8, iPhone8 Plus, iPhone X, etc. For optimum performance and safety, please read this manual carefully before using this product.

Specification:  
Capacity: 10000mAh  
Cell: Li-Polymer, Grade A  
Transmission Distance: ≤6mm  
Charging Efficiency: ≥70%  
Size: 129.8\*70.9\*16mm  
Weight: 205g  
Input Voltage: Micro: 5V/2A, 9V/2A; Type C: 5V/2.5A, 9V/2A  
Output Voltage: 5V/3.1A, 9V/2A, 12V/1.5A  
Wireless Output Voltage: 5V/1A; 9V/1.12A  
Wireless Power: 10W/7.5W/5W

- ① Transmitter Coil Area
- ② Wireless Charging Status Indicator
- ③ Switch
- ④ Power Level Indicator
- ⑤ Micro Input
- ⑥ Type-C Input/Output
- ⑦ USB Output

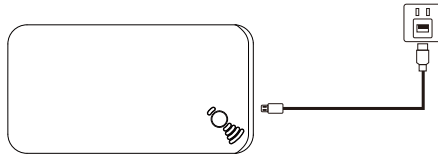


## How to Use

## Charging your Wireless Power Bank

1. Insert USB cable USB A end into power device.
2. Plug power device into DC power socket.
3. Plug the MIC end of the Micro USB data cable into the Input port of the product. The blue light flashes to indicate the current power level.

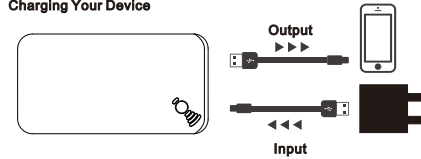
**Remark:** please use the adapter & data cable could support QC 2.0 at least if max output required



## Battery Indicator

● 1	● 2	● 3	● 4
0%-25%	25%-50%	50%-75%	75%-100%

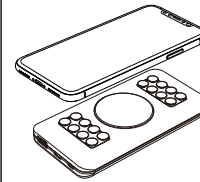
## Charging Your Device



USB port Schematic for regular charging and discharging

1. Insert the USB data cable USB A end into Output.
2. Plug the other end of the cable into a terminal such as a mobile phone.
3. Click the switch button and the power is discharged to charge the terminal such as a mobile phone and the blue light flashes. The red light is on, indicating wireless charging standby.

## Wireless discharging



1. Make sure there is no any clutters on the product.
2. Click the switch and the red light is on, indicating wireless charging standby to charge the terminal such as a mobile phone.
3. Place a mobile phone or other compatible device that complies with the Qi protocol on the mobile power supply to achieve wireless charging. Note that the center of the mobile phone's receiving coil must coincide with the transmitting coil of the product, and the green light indicates wireless charging.

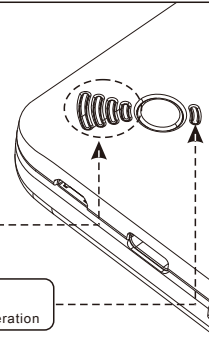
## Accessories:

Wireless Power Bank\*1  
Micro USB Charging Cable\*1  
User Manual\*1

## Indicators:

Blue light flashes: charging  
Blue light on: discharging

Red light on: wireless charging stand-by  
Green light on: wireless charging  
Red and blue light fast blink: abnormal operation



## Warning

When your wireless power bank works improperly

1. Make sure there is no any clutters on the wireless transmitter.
2. When the wireless power bank is over-heating, take your mobile device away from your wireless power bank. And the transmitter will stop charging automatically when over-heating. Please try charging again when the wireless power bank cooling down.

## Remarks

It's normal that this charger and your smart phone will be hot under operating conditions, and it may be more hotter when charging and using at the same time (such as looping music)

## FCC Statement

This equipment has been tested and found to comply with the limits for a Class B digital device, pursuant to part 15 of the FCC Rules. These limits are designed to provide reasonable protection against harmful interference in a residential installation. This equipment generates, uses and can radiate radio frequency energy and, if not installed and used in accordance with the instructions, may cause harmful interference to radio communications. However, there is no guarantee that interference will not occur in a particular installation. If this equipment does cause harmful interference to radio or television reception, which can be determined by turning the equipment off and on, the user is encouraged to try to correct the interference by one or more of the following measures:

- o Reorient or relocate the receiving antenna.
- o Increase the separation between the equipment and receiver.
- o Connect the equipment into an outlet on a circuit different from that to which the receiver is connected.
- o Consult the dealer or an experienced radio/TV technician for help.

Caution: Any changes or modifications to this device not explicitly approved by manufacturer could void your authority to operate this equipment.

This device complies with part 15 of the FCC Rules. Operation is subject to the following two conditions: (1) This device may not cause harmful interference, and (2) this device must accept any interference received, including interference that may cause undesired operation.

The device has been evaluated to meet general RF exposure requirement.

The device has been evaluated to meet general RF exposure requirement. The device can be used in portable exposure condition without restriction.

