

FCC REPORT

Applicant: SKY RICH STAR LIMITED

Address of Applicant: Unit E, 10/F, Worldwide Centre, 123 Tung Chau Street, Tai Kok Tsui Kowloon, Hong Kong

Manufacturer/Factory: ZhongshanQuanxin Lighting Electrical Co., Ltd.

Address of Manufacturer/Factory: Hong Ji Street, Shalang, Long Ping Cun, West District, Zhongshan Guangdong 528411 China

Equipment Under Test (EUT)

Product Name: LED Security Light

Model No.: NW0130U20850, NW0130U2#### (Where "#" is used to denote numbers or blank for commercial purpose)

FCC ID: 2AP2L-NW0130U2

Applicable standards: FCC CFR Title 47 Part 15 Subpart C Section 15.249

Date of sample receipt: April 22, 2019

Date of Test: April 22-25, 2019

Date of report issued: April 25, 2019

Test Result : PASS *

* In the configuration tested, the EUT complied with the standards specified above.

Authorized Signature:




Robinson Lo
Laboratory Manager

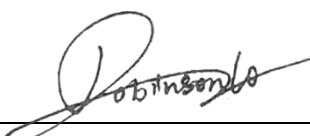
This results shown in this test report refer only to the sample(s) tested, this test report cannot be reproduced, except in full, without prior written permission of the company. The report would be invalid without specific stamp of test institute and the signatures of compiler and approver.

2 Version

Version No.	Date	Description
00	April 25, 2019	Original

Prepared By:  **Date:** April 25, 2019

Project Engineer

Check By:  **Date:** April 25, 2019

Reviewer

3 Contents

	Page
1 COVER PAGE.....	1
2 VERSION.....	2
3 CONTENTS	3
4 TEST SUMMARY	4
4.1 MEASUREMENT UNCERTAINTY	4
5 GENERAL INFORMATION.....	5
5.1 GENERAL DESCRIPTION OF EUT	5
5.2 TEST MODE	7
5.3 DESCRIPTION OF SUPPORT UNITS	7
5.4 TEST FACILITY.....	7
5.5 TEST LOCATION	7
6 TEST INSTRUMENTS LIST	8
7 TEST RESULTS AND MEASUREMENT DATA.....	10
7.1 ANTENNA REQUIREMENT	10
7.2 CONDUCTED EMISSIONS	11
7.3 RADIATED EMISSION METHOD	14
7.3.1 <i>Field Strength of The Fundamental Signal</i>	16
7.3.2 <i>Spurious emissions</i>	17
7.3.3 <i>Bandedge emissions</i>	22
7.4 20dB OCCUPY BANDWIDTH	24
8 TEST SETUP PHOTO	26
9 EUT CONSTRUCTIONAL DETAILS	28

4 Test Summary

Test Item	Section in CFR 47	Result
Antenna requirement	15.203	Pass
AC Power Line Conducted Emission	15.207	Pass
Field strength of the fundamental signal	15.249 (a)	Pass
Spurious emissions	15.249 (a) (d)/15.209	Pass
Band edge	15.249 (d)/15.205	Pass
20dB Occupied Bandwidth	15.215 (c)	Pass

Pass: The EUT complies with the essential requirements in the standard.

Remark: Test according to ANSI C63.4:2014 and ANSI C63.10:2013.

4.1 Measurement Uncertainty

Test Item	Frequency Range	Measurement Uncertainty	Notes
Radiated Emission	9kHz ~ 30MHz	± 4.34dB	(1)
Radiated Emission	30MHz ~ 1000MHz	± 4.24dB	(1)
Radiated Emission	1GHz ~ 26.5GHz	± 4.68dB	(1)
AC Power Line Conducted Emission	0.15MHz ~ 30MHz	± 3.45dB	(1)

Note (1): The measurement uncertainty is for coverage factor of k=2 and a level of confidence of 95%.

5 General Information

5.1 General Description of EUT

Product Name:	LED Security Light
Model No.:	NW0130U20850, NW0130U2#### (Where "#" is used to denote numbers or blank for commercial purpose)
Test Model No:	NW0130U20850
<i>Remark: All above models are identical in the same PCB layout, interior structure and electrical circuits. The differences are color and model name for commercial purpose.</i>	
Serial No.:	QXNW0130U20
Hardware Version:	V1.2
Software Version:	V1.0
Test sample(s) ID:	GTS201904000149-1
Sample(s) Status	Engineered sample
Operation Frequency:	2405MHz~2481MHz
Channel numbers:	10
Modulation type:	GFSK
Antenna Type:	Integral antenna
Antenna gain:	5.0dBi(declare by applicant)
Power supply:	AC120V 60Hz

Operation Frequency each of channel							
Channel	Frequency (MHz)	Channel	Frequency (MHz)	Channel	Frequency (MHz)	Channel	Frequency (MHz)
1	2405	4	2420	7	2456	10	2481
2	2408	5	2450	8	2475		
3	2411	6	2453	9	2478		

Note:

In section 15.31(m), regards to the operating frequency range over 10 MHz, the Lowest frequency, the middle frequency, and the highest frequency of channel were selected to perform the test, and the selected channel see below:

Channel	Frequency
The lowest channel	2405MHz
The middle channel	2450MHz
The Highest channel	2481MHz

5.2 Test mode

Transmitting mode	Keep the EUT in continuously transmitting mode.
<i>Remark: During the test, the duty cycle >98%, the test voltage was tuned from 85% to 115% of the nominal rated supply voltage, and found that the worst case was under the nominal rated supply condition. So the report just shows that condition's data.</i>	

Pre-test mode.

We have verified the construction and function in typical operation, The EUT was placed on three different polar directions; i.e. X axis, Y axis, Z axis. which was shown in this test report and defined as follows:

Axis	X	Y	Z
Field Strength(dBuV/m)	83.50	85.58	84.62

5.3 Description of Support Units

None

5.4 Test Facility

The test facility is recognized, certified, or accredited by the following organizations:

- **FCC —Registration No.: 381383**

Global United Technology Services Co., Ltd., Shenzhen EMC Laboratory has been registered and fully described in a report filed with the (FCC) Federal Communications Commission. The acceptance letter from the FCC is maintained in files. Registration 381383.

- **Industry Canada (IC) —Registration No.: 9079A-2**

The 3m Semi-anechoic chamber of Global United Technology Services Co., Ltd. has been registered by Certification and Engineering Bureau of Industry Canada for radio equipment testing with Registration No.: 9079A-2.

- **NVLAP (LAB CODE:600179-0)**

Global United Technology Services Co., Ltd., is accredited by the National Voluntary Laboratory Accreditation Program (NVLAP). LAB CODE:600179-0

5.5 Test Location

All tests were performed at:
Global United Technology Services Co., Ltd. No. 301-309, 3/F., Jinyuan Business Building, No.2, Laodong Industrial Zone, Xixiang Road, Baoan District, Shenzhen, Guangdong, China 518102 Tel: 0755-27798480 Fax: 0755-27798960

6 Test Instruments list

Radiated Emission:						
Item	Test Equipment	Manufacturer	Model No.	Inventory No.	Cal.Date (mm-dd-yy)	Cal.Due date (mm-dd-yy)
1	3m Semi- Anechoic Chamber	ZhongYu Electron	9.2(L)*6.2(W)* 6.4(H)	GTS250	July. 03 2015	July. 02 2020
2	Control Room	ZhongYu Electron	6.2(L)*2.5(W)* 2.4(H)	GTS251	N/A	N/A
3	EMI Test Receiver	Rohde & Schwarz	ESU26	GTS203	June. 27 2018	June. 26 2019
4	BiConiLog Antenna	SCHWARZBECK MESS-ELEKTRONIK	VULB9163	GTS214	June. 27 2018	June. 26 2019
5	Double -ridged waveguide horn	SCHWARZBECK MESS-ELEKTRONIK	BBHA 9120 D	GTS208	June. 27 2018	June. 26 2019
6	Horn Antenna	ETS-LINDGREN	3160	GTS217	June. 27 2018	June. 26 2019
7	EMI Test Software	AUDIX	E3	N/A	N/A	N/A
8	Coaxial Cable	GTS	N/A	GTS213	June. 27 2018	June. 26 2019
9	Coaxial Cable	GTS	N/A	GTS211	June. 27 2018	June. 26 2019
10	Coaxial cable	GTS	N/A	GTS210	June. 27 2018	June. 26 2019
11	Coaxial Cable	GTS	N/A	GTS212	June. 27 2018	June. 26 2019
12	Amplifier(100kHz-3GHz)	HP	8347A	GTS204	June. 27 2018	June. 26 2019
13	Amplifier(2GHz-20GHz)	HP	84722A	GTS206	June. 27 2018	June. 26 2019
14	Amplifier (18-26GHz)	Rohde & Schwarz	AFS33-18002 650-30-8P-44	GTS218	June. 27 2018	June. 26 2019
15	Band filter	Amindeon	82346	GTS219	June. 27 2018	June. 26 2019
16	Power Meter	Anritsu	ML2495A	GTS540	June. 27 2018	June. 26 2019
17	Power Sensor	Anritsu	MA2411B	GTS541	June. 27 2018	June. 26 2019
18	Wideband Radio Communication Tester	Rohde & Schwarz	CMW500	GTS575	June. 27 2018	June. 26 2019
19	Splitter	Agilent	11636B	GTS237	June. 27 2018	June. 26 2019
20	Loop Antenna	ZHINAN	ZN30900A	GTS534	June. 27 2018	June. 26 2019
21	Breitband hornantenne	SCHWARZBECK	BBHA 9170	GTS579	Oct. 20 2018	Oct. 19 2019
22	Amplifier	TDK	PA-02-02	GTS574	Oct. 20 2018	Oct. 19 2019
23	Amplifier	TDK	PA-02-03	GTS576	Oct. 20 2018	Oct. 19 2019
24	PSA Series Spectrum Analyzer	Rohde & Schwarz	FSP	GTS578	June. 27 2018	June. 26 2019

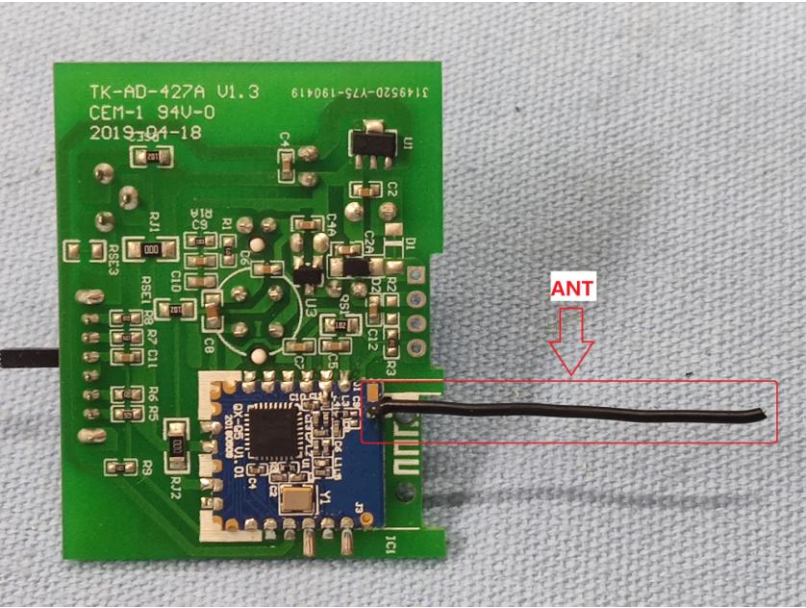
Conducted Emission						
Item	Test Equipment	Manufacturer	Model No.	Inventory No.	Cal.Date (mm-dd-yy)	Cal.Due date (mm-dd-yy)
1	Shielding Room	ZhongYu Electron	7.3(L)x3.1(W)x2.9(H)	GTS252	May.16 2014	May.15 2019
2	EMI Test Receiver	R&S	ESCI 7	GTS552	June. 27 2018	June. 26 2019
3	Coaxial Switch	ANRITSU CORP	MP59B	GTS225	June. 27 2018	June. 26 2019
4	Artificial Mains Network	SCHWARZBECK MESS	NSLK8127	GTS226	June. 27 2018	June. 26 2019
5	Coaxial Cable	GTS	N/A	GTS227	June. 27 2018	June. 26 2019
6	EMI Test Software	AUDIX	E3	N/A	N/A	N/A
7	Thermo meter	KTJ	TA328	GTS233	June. 27 2018	June. 26 2019
8	Absorbing clamp	Elektronik-Feinmechanik	MDS21	GTS229	June. 27 2018	June. 26 2019

RF Conducted Test:						
Item	Test Equipment	Manufacturer	Model No.	Serial No.	Cal.Date (mm-dd-yy)	Cal.Due date (mm-dd-yy)
1	MXA Signal Analyzer	Agilent	N9020A	GTS566	June. 27 2018	June. 26 2019
2	EMI Test Receiver	R&S	ESCI 7	GTS552	June. 27 2018	June. 26 2019
3	Spectrum Analyzer	Agilent	E4440A	GTS533	June. 27 2018	June. 26 2019
4	MXG vector Signal Generator	Agilent	N5182A	GTS567	June. 27 2018	June. 26 2019
5	ESG Analog Signal Generator	Agilent	E4428C	GTS568	June. 27 2018	June. 26 2019
6	USB RF Power Sensor	DARE	RPR3006W	GTS569	June. 27 2018	June. 26 2019
7	RF Switch Box	Shongyi	RFSW3003328	GTS571	June. 27 2018	June. 26 2019
8	Programmable Constant Temp & Humi Test Chamber	WEWON	WHTH-150L-40-880	GTS572	June. 27 2018	June. 26 2019

General used equipment:						
Item	Test Equipment	Manufacturer	Model No.	Inventory No.	Cal.Date (mm-dd-yy)	Cal.Due date (mm-dd-yy)
1	Humidity/ Temperature Indicator	KTJ	TA328	GTS243	June. 27 2018	June. 26 2019
2	Barometer	ChangChun	DYM3	GTS255	June. 27 2018	June. 26 2019

7 Test results and Measurement Data

7.1 Antenna requirement

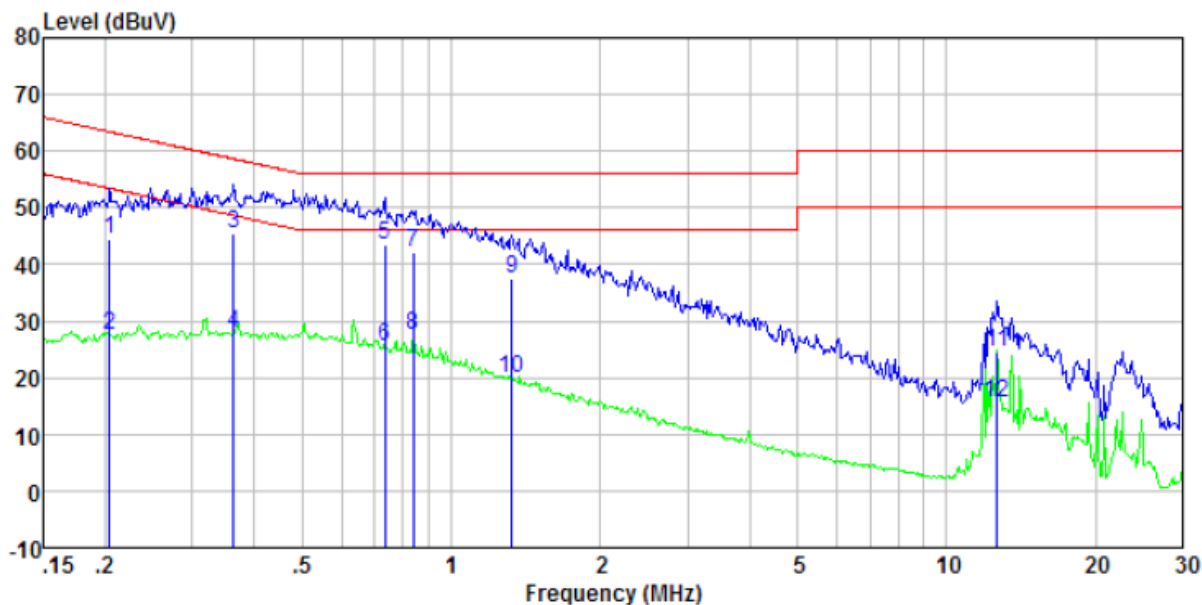
Standard requirement:	FCC Part15 C Section 15.203
<p>15.203 requirement:</p> <p>An intentional radiator shall be designed to ensure that no antenna other than that furnished by the responsible party shall be used with the device. The use of a permanently attached antenna or of an antenna that uses a unique coupling to the intentional radiator, the manufacturer may design the unit so that a broken antenna can be replaced by the user, but the use of a standard antenna jack or electrical connector is prohibited.</p>	
<p>EUT Antenna:</p>	
<p><i>The antenna is integral antenna, the best case gain of the antenna is 5.0dBi</i></p> 	

7.2 Conducted Emissions

Test Requirement:	FCC Part15 C Section 15.207														
Test Method:	ANSI C63.10:2013														
Test Frequency Range:	150KHz to 30MHz														
Class / Severity:	Class B														
Receiver setup:	RBW=9KHz, VBW=30KHz, Sweep time=auto														
Limit:	<table border="1"> <thead> <tr> <th rowspan="2">Frequency range (MHz)</th> <th colspan="2">Limit (dBuV)</th> </tr> <tr> <th>Quasi-peak</th> <th>Average</th> </tr> </thead> <tbody> <tr> <td>0.15-0.5</td> <td>66 to 56*</td> <td>56 to 46*</td> </tr> <tr> <td>0.5-5</td> <td>56</td> <td>46</td> </tr> <tr> <td>5-30</td> <td>60</td> <td>50</td> </tr> </tbody> </table> <p>* Decreases with the logarithm of the frequency.</p>	Frequency range (MHz)	Limit (dBuV)		Quasi-peak	Average	0.15-0.5	66 to 56*	56 to 46*	0.5-5	56	46	5-30	60	50
Frequency range (MHz)	Limit (dBuV)														
	Quasi-peak	Average													
0.15-0.5	66 to 56*	56 to 46*													
0.5-5	56	46													
5-30	60	50													
Test setup:	<p><i>Remark</i> E.U.T: Equipment Under Test LISN: Line Impedance Stabilization Network Test table height=0.8m</p>														
Test procedure:	<ol style="list-style-type: none"> 1. The EUT and simulators are connected to the main power through a line impedance stabilization network (L.I.S.N.). This provides a 50ohm/50uH coupling impedance for the measuring equipment. 2. The peripheral devices are also connected to the main power through a LISN that provides a 50ohm/50uH coupling impedance with 50ohm termination. (Please refer to the block diagram of the test setup and photographs). 3. Both sides of A.C. line are checked for maximum conducted interference. In order to find the maximum emission, the relative positions of equipment and all of the interface cables must be changed according to ANSI C63.10: 2013 on conducted measurement. 														
Test Instruments:	Refer to section 6.0 for details														
Test mode:	Refer to section 5.2 for details														
Test voltage:	AC120V 60Hz														
Test results:	Pass														

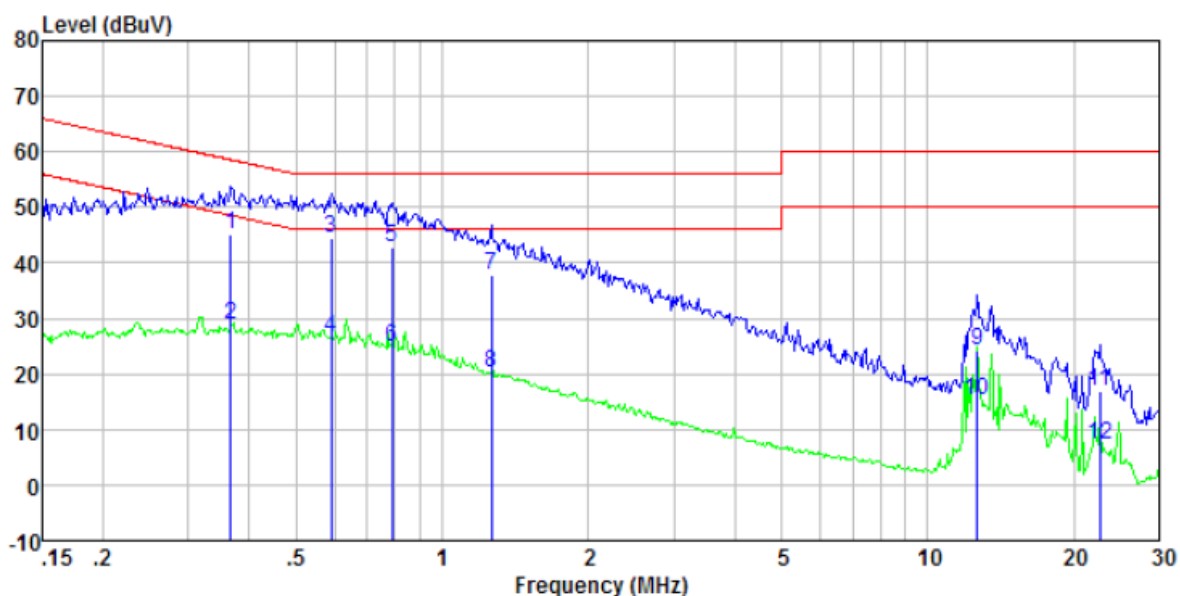
Measurement data

Mode:	Transmitting mode	Test by:	Jason
Temp./Hum.(%RH):	26°C/56%RH	Probe:	Line



Freq MHz	Reading level dBuV	LISN/ISN factor dB/m	Cable loss dB	Level dBuV	Limit level dBuV	Over limit dB	Remark
0.20	44.09	0.40	0.11	44.60	63.45	-18.85	QP
0.20	27.12	0.40	0.11	27.63	53.45	-25.82	Average
0.36	45.02	0.37	0.10	45.49	58.65	-13.16	QP
0.36	27.54	0.37	0.10	28.01	48.65	-20.64	Average
0.74	43.08	0.25	0.13	43.46	56.00	-12.54	QP
0.74	25.23	0.25	0.13	25.61	46.00	-20.39	Average
0.84	41.79	0.23	0.14	42.16	56.00	-13.84	QP
0.84	27.18	0.23	0.14	27.55	46.00	-18.45	Average
1.32	36.98	0.20	0.16	37.34	56.00	-18.66	QP
1.32	19.42	0.20	0.16	19.78	46.00	-26.22	Average
12.65	24.20	0.20	0.21	24.61	60.00	-35.39	QP
12.65	15.05	0.20	0.21	15.46	50.00	-34.54	Average

Mode:	Transmitting mode	Test by:	Jason
Temp./Hum.(%RH):	26°C/56%RH	Probe:	Neutral

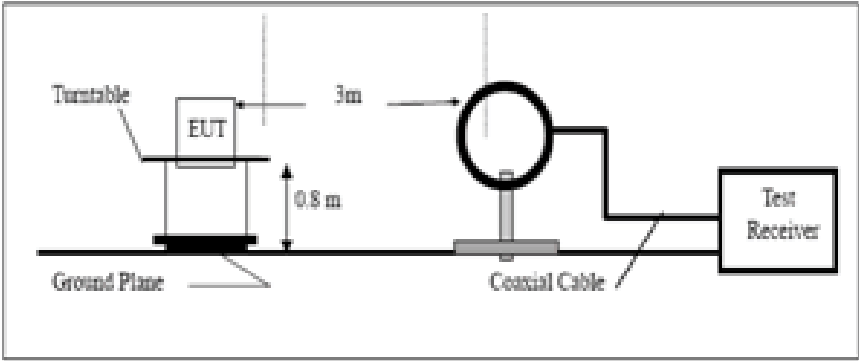


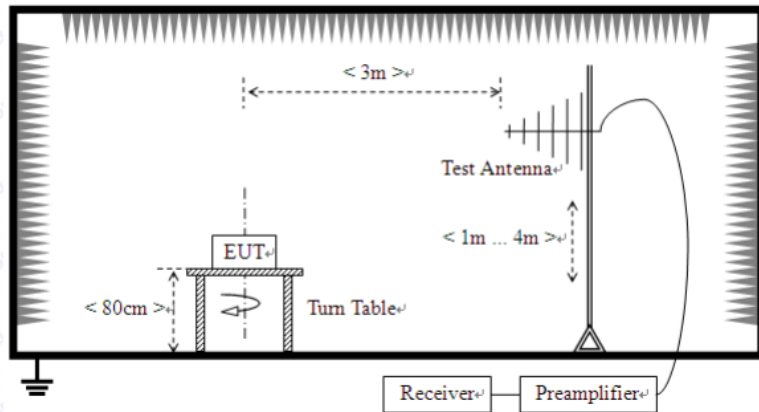
Freq MHz	Reading level dBuV	LISN/ISN factor dB/m	Cable loss dB	Level dBuV	Limit level dBuV	Over limit dB	Remark
0.37	44.73	0.37	0.10	45.20	58.56	-13.36	QP
0.37	28.50	0.37	0.10	28.97	48.56	-19.59	Average
0.59	44.05	0.29	0.12	44.46	56.00	-11.54	QP
0.59	26.04	0.29	0.12	26.45	46.00	-19.55	Average
0.79	42.58	0.24	0.14	42.96	56.00	-13.04	QP
0.79	24.47	0.24	0.14	24.85	46.00	-21.15	Average
1.26	37.45	0.20	0.16	37.81	56.00	-18.19	QP
1.26	19.93	0.20	0.16	20.29	46.00	-25.71	Average
12.65	23.88	0.20	0.21	24.29	60.00	-35.71	QP
12.65	14.79	0.20	0.21	15.20	50.00	-34.80	Average
22.66	16.21	0.33	0.23	16.77	60.00	-43.23	QP
22.66	6.73	0.33	0.23	7.29	50.00	-42.71	Average

Notes:

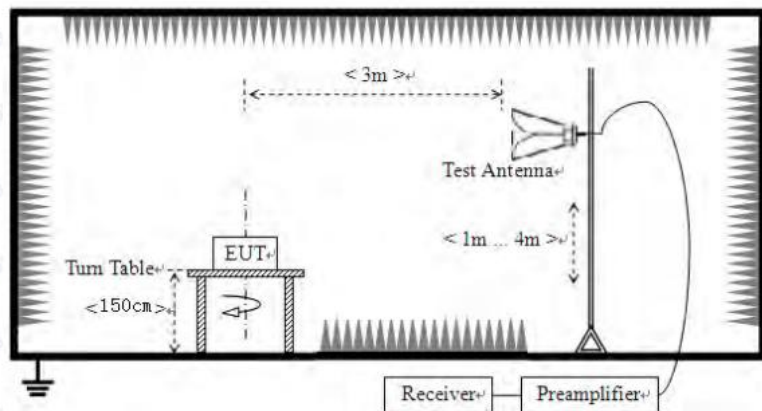
1. An initial pre-scan was performed on the line and neutral lines with peak detector.
2. Quasi-Peak and Average measurement were performed at the frequencies with maximized peak emission.
3. Final Level =Receiver Read level + LISN Factor + Cable Loss
4. If the average limit is met when using a quasi-peak detector receiver, the EUT shall be deemed to meet both limits and measurement with the average detector receiver is unnecessary.

7.3 Radiated Emission Method

Test Requirement:	FCC Part15 C Section 15.209				
Test Method:	ANSI C63.10:2013				
Test Frequency Range:	9kHz to 25GHz				
Test site:	Measurement Distance: 3m				
Receiver setup:	Frequency	Detector	RBW	VBW	Remark
	9kHz-150kHz	PK,AV,QP	200Hz	300Hz	PK,AV,QP
	150kHz-30MHz	PK,AV,QP	9kHz	10kHz	PK,AV,QP
	30MHz-1GHz	Quasi-peak	120KHz	300KHz	Quasi-peak Value
	Above 1GHz	Peak	1MHz	3MHz	Peak Value
Peak		1MHz	10Hz	Average Value	
Limit: (Field strength of the fundamental signal)	Frequency	Limit (dBuV/m @3m)		Remark	
	2400MHz-2483.5MHz	94.00		Average Value	
		114.00		Peak Value	
Limit: (Spurious Emissions)	Frequency	Limit (uV/m)		Remark	
	0.009MHz-0.490MHz	2400/F(kHz) @300m		Quasi-peak Value	
	0.490MHz-1.705MHz	24000/F(kHz) @30m		Quasi-peak Value	
	1.705MHz-30.0MHz	30 @30m		Quasi-peak Value	
	30MHz-88MHz	100 @3m		Quasi-peak Value	
	88MHz-216MHz	150 @3m		Quasi-peak Value	
	216MHz-960MHz	200 @3m		Quasi-peak Value	
	960MHz-1GHz	500 @3m		Quasi-peak Value	
	Above 1GHz	500 @3m		Average Value	
5000 @3m		Peak Value			
Limit: (band edge)	Emissions radiated outside of the specified frequency bands, except for harmonics, shall be attenuated by at least 50 dB below the level of the fundamental or to the general radiated emission limits in Section 15.209, whichever is the lesser attenuation.				
Test setup:	<p>Below 1GHz</p> 				



Above 1GHz



Test Procedure:

1. The EUT was placed on the top of a rotating table (0.8m for below 1G and 1.5m for above 1G) above the ground at a 3 meter camber. The table was rotated 360 degrees to determine the position of the highest radiation.
2. The EUT was set 3 meters away from the interference-receiving antenna, which was mounted on the top of a variable-height antenna tower.
3. The antenna height is varied from one meter to four meters above the ground to determine the maximum value of the field strength. Both horizontal and vertical polarizations of the antenna are set to make the measurement.
4. For each suspected emission, the EUT was arranged to its worst case and then the antenna was tuned to heights from 1 meter to 4 meters and the rota table was turned from 0 degrees to 360 degrees to find the maximum reading.
5. The test-receiver system was set to Peak Detect Function and Specified Bandwidth with Maximum Hold Mode.
6. If the emission level of the EUT in peak mode was 10dB lower than the limit specified, then testing could be stopped and the peak values of the EUT would be reported. Otherwise the emissions that did not have 10dB margin would be re-tested one by one using peak, quasi-peak or average method as specified and then reported in a data sheet.

Test Instruments:	Refer to section 6.0 for details
Test mode:	Refer to section 5.2 for details
Test voltage:	AC120V 60Hz
Test results:	Pass

Measurement data:

7.3.1 Field Strength of The Fundamental Signal

Peak value:

Frequency (MHz)	Read Level (dBuV)	Antenna Factor (dB/m)	Cable Loss (dB)	Preamplifier Factor (dB)	Level (dBuV/m)	Limit Line (dBuV/m)	Over Limit (dB)	polarization
2405.00	85.62	27.43	5.40	33.99	84.46	114.00	-29.54	Vertical
2405.00	83.35	27.43	5.40	33.99	82.19	114.00	-31.81	Horizontal
2450.00	84.21	27.55	5.44	33.96	83.24	114.00	-30.76	Vertical
2450.00	82.15	27.55	5.44	33.96	81.18	114.00	-32.82	Horizontal
2481.00	85.26	27.64	5.47	33.92	84.45	114.00	-29.55	Vertical
2481.00	86.39	27.64	5.47	33.92	85.58	114.00	-28.42	Horizontal

Average value:

Frequency (MHz)	Read Level (dBuV)	Antenna Factor (dB/m)	Cable Loss (dB)	Preamplifier Factor (dB)	Level (dBuV/m)	Limit Line (dBuV/m)	Over Limit (dB)	polarization
2405.00	79.62	27.43	5.40	33.99	78.46	94.00	-15.54	Vertical
2405.00	78.05	27.43	5.40	33.99	76.89	94.00	-17.11	Horizontal
2450.00	78.29	27.55	5.44	33.96	77.32	94.00	-16.68	Vertical
2450.00	76.41	27.55	5.44	33.96	75.44	94.00	-18.56	Horizontal
2481.00	79.52	27.64	5.47	33.92	78.71	94.00	-15.29	Vertical
2481.00	80.77	27.64	5.47	33.92	79.96	94.00	-14.04	Horizontal

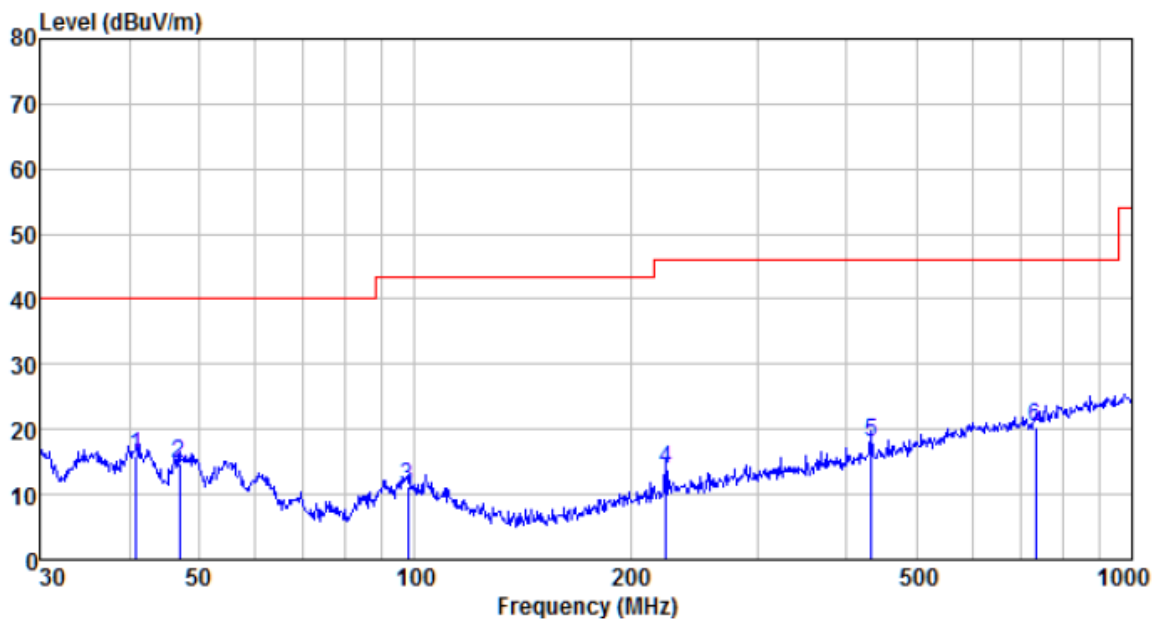
7.3.2 Spurious emissions

■ Below 30MHz

The emission from 9 kHz to 30MHz was pre-tested and found the result was 20dB lower than the limit, and according to 15.31(o), the test result no need to reported.

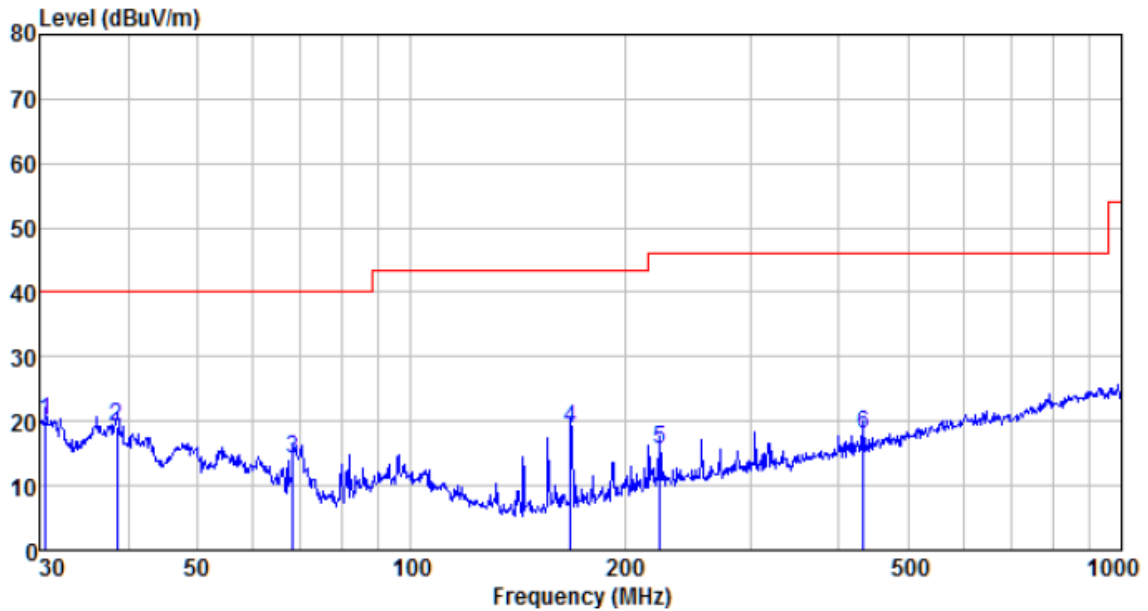
■ Below 1GHz

Mode:	Transmitting mode	Test by:	Jason
Temp./Hum.(%H):	26°C/56%RH	Polarization:	Horizontal



Freq MHz	Reading level dBuV	Antenna factor dB/m	Cable loss dB	Preamp factor dB	level dBuV	Limit level dBuV/m	Over limit dB	Remark
40.845	38.66	12.21	0.67	35.71	15.83	40.00	-24.17	QP
46.995	37.66	12.27	0.74	36.04	14.63	40.00	-25.37	QP
97.798	34.69	11.93	1.17	36.70	11.09	43.50	-32.41	QP
223.733	37.83	11.27	1.98	37.35	13.73	46.00	-32.27	QP
432.546	36.43	15.99	3.01	37.52	17.91	46.00	-28.09	QP
734.491	33.50	20.22	4.22	37.63	20.31	46.00	-25.69	QP

Mode:	Transmitting mode	Test by:	Jason
Temp./Hum.(%H):	26°C/56%RH	Polarization:	Vertical



Freq MHz	Reading level dBuV	Antenna factor dB/m	Cable loss dB	Preamp factor dB	level dBuV	Limit level dBuV/m	Over limit dB	Remark
30.638	43.28	11.22	0.56	35.05	20.01	40.00	-19.99	QP
38.616	42.22	11.98	0.65	35.58	19.27	40.00	-20.73	QP
68.151	41.50	8.19	0.93	36.42	14.20	40.00	-25.80	QP
167.824	45.82	8.46	1.67	37.18	18.77	43.50	-24.73	QP
223.733	39.80	11.27	1.98	37.35	15.70	46.00	-30.30	QP
432.546	36.51	15.99	3.01	37.52	17.99	46.00	-28.01	QP

■ Above 1GHz

Test channel:	Lowest channel
---------------	----------------

Peak value:

Frequency (MHz)	Read Level (dBuV)	Antenna Factor (dB/m)	Cable Loss (dB)	Preamp Factor (dB)	Level (dBuV/m)	Limit Line (dBuV/m)	Over Limit (dB)	polarization
4810.00	34.62	31.20	8.60	32.09	42.33	74.00	-31.67	Vertical
7215.00	32.33	36.20	11.66	31.99	48.20	74.00	-25.80	Vertical
9620.00	32.45	37.93	14.14	31.60	52.92	74.00	-21.08	Vertical
12025.00	*					74.00		Vertical
14430.00	*					74.00		Vertical
4810.00	37.96	31.20	8.60	32.09	45.67	74.00	-28.33	Horizontal
7215.00	34.25	36.20	11.66	31.99	50.12	74.00	-23.88	Horizontal
9620.00	31.33	37.93	14.14	31.60	51.80	74.00	-22.20	Horizontal
12025.00	*					74.00		Horizontal
14430.00	*					74.00		Horizontal

Average value:

Frequency (MHz)	Read Level (dBuV)	Antenna Factor (dB/m)	Cable Loss (dB)	Preamp Factor (dB)	Level (dBuV/m)	Limit Line (dBuV/m)	Over Limit (dB)	polarization
4810.00	26.32	31.20	8.60	32.09	34.03	54.00	-19.97	Vertical
7215.00	20.12	36.20	11.66	31.99	35.99	54.00	-18.01	Vertical
9620.00	19.56	37.93	14.14	31.60	40.03	54.00	-13.97	Vertical
12025.00	*					54.00		Vertical
14430.00	*					54.00		Vertical
4810.00	28.63	31.20	8.60	32.09	36.34	54.00	-17.66	Horizontal
7215.00	21.47	36.20	11.66	31.99	37.34	54.00	-16.66	Horizontal
9620.00	20.15	37.93	14.14	31.60	40.62	54.00	-13.38	Horizontal
12025.00	*					54.00		Horizontal
14430.00	*					54.00		Horizontal

Remark:

1. Final Level = Receiver Read level + Antenna Factor + Cable Loss – Preamplifier Factor
2. The emission levels of other frequencies are very lower than the limit and not show in test report.
3. “*”, means this data is the too weak instrument of signal is unable to test.

Test channel:	Middle channel
---------------	----------------

Peak value:

Frequency (MHz)	Read Level (dBuV)	Antenna Factor (dB/m)	Cable Loss (dB)	Preamp Factor (dB)	Level (dBuV/m)	Limit Line (dBuV/m)	Over Limit (dB)	polarization
4900.00	35.78	31.35	8.68	32.13	43.68	74.00	-30.32	Vertical
7350.00	31.22	36.48	11.74	31.86	47.58	74.00	-26.42	Vertical
9800.00	31.50	38.17	14.29	31.68	52.28	74.00	-21.72	Vertical
12250.00	*					74.00		Vertical
14700.00	*					74.00		Vertical
4900.00	38.45	31.35	8.68	32.13	46.35	74.00	-27.65	Horizontal
7350.00	33.15	36.48	11.74	31.86	49.51	74.00	-24.49	Horizontal
9800.00	31.07	38.17	14.29	31.68	51.85	74.00	-22.15	Horizontal
12250.00	*					74.00		Horizontal
14700.00	*					74.00		Horizontal

Average value:

Frequency (MHz)	Read Level (dBuV)	Antenna Factor (dB/m)	Cable Loss (dB)	Preamp Factor (dB)	Level (dBuV/m)	Limit Line (dBuV/m)	Over Limit (dB)	polarization
4900.00	26.52	31.35	8.68	32.13	34.42	54.00	-19.58	Vertical
7350.00	20.33	36.48	11.74	31.86	36.69	54.00	-17.31	Vertical
9800.00	19.35	38.17	14.29	31.68	40.13	54.00	-13.87	Vertical
12250.00	*					54.00		Vertical
14700.00	*					54.00		Vertical
4900.00	28.57	31.35	8.68	32.13	36.47	54.00	-17.53	Horizontal
7350.00	21.44	36.48	11.74	31.86	37.80	54.00	-16.20	Horizontal
9800.00	20.25	38.17	14.29	31.68	41.03	54.00	-12.97	Horizontal
12250.00	*					54.00		Horizontal
14700.00	*					54.00		Horizontal

Remark:

1. Final Level = Receiver Read level + Antenna Factor + Cable Loss – Preamplifier Factor
2. The emission levels of other frequencies are very lower than the limit and not show in test report.
3. “*”, means this data is the too weak instrument of signal is unable to test.

Test channel:	Highest channel
---------------	-----------------

Peak value:

Frequency (MHz)	Read Level (dBuV)	Antenna Factor (dB/m)	Cable Loss (dB)	Preamp Factor (dB)	Level (dBuV/m)	Limit Line (dBuV/m)	Over Limit (dB)	polarization
4962.00	36.11	31.44	8.73	32.16	44.12	74.00	-29.88	Vertical
7443.00	30.57	36.66	11.79	31.78	47.24	74.00	-26.76	Vertical
9924.00	31.42	38.30	14.38	31.88	52.22	74.00	-21.78	Vertical
12405.00	*					74.00		Vertical
14886.00	*					74.00		Vertical
4962.00	37.85	31.44	8.73	32.16	45.86	74.00	-28.14	Horizontal
7443.00	31.56	36.66	11.79	31.78	48.23	74.00	-25.77	Horizontal
9924.00	30.22	38.30	14.38	31.88	51.02	74.00	-22.98	Horizontal
12405.00	*					74.00		Horizontal
14886.00	*					74.00		Horizontal

Average value:

Frequency (MHz)	Read Level (dBuV)	Antenna Factor (dB/m)	Cable Loss (dB)	Preamp Factor (dB)	Level (dBuV/m)	Limit Line (dBuV/m)	Over Limit (dB)	polarization
4962.00	25.65	31.44	8.73	32.16	33.66	54.00	-20.34	Vertical
7443.00	20.11	36.66	11.79	31.78	36.78	54.00	-17.22	Vertical
9924.00	19.85	38.30	14.38	31.88	40.65	54.00	-13.35	Vertical
12405.00	*					54.00		Vertical
14886.00	*					54.00		Vertical
4962.00	27.69	31.44	8.73	32.16	35.70	54.00	-18.30	Horizontal
7443.00	21.74	36.66	11.79	31.78	38.41	54.00	-15.59	Horizontal
9924.00	20.75	38.30	14.38	31.88	41.55	54.00	-12.45	Horizontal
12405.00	*					54.00		Horizontal
14886.00	*					54.00		Horizontal

Remark:

1. Final Level = Receiver Read level + Antenna Factor + Cable Loss – Pre-amplifier Factor
2. The emission levels of other frequencies are very lower than the limit and not show in test report.
3. “*”, means this data is the too weak instrument of signal is unable to test.

7.3.3 Bandedge emissions

All of the restriction bands were tested, and only the data of worst case was exhibited.

Test channel:	Lowest channel
---------------	----------------

Peak value:

Frequency (MHz)	Read Level (dBuV)	Antenna Factor (dB/m)	Cable Loss (dB)	Preamp Factor (dB)	Level (dBuV/m)	Limit Line (dBuV/m)	Over Limit (dB)	Polarization
2310.00	34.23	27.59	5.38	30.18	37.02	74.00	-36.98	Horizontal
2390.00	39.52	27.58	5.39	30.18	42.31	74.00	-31.69	Horizontal
2400.00	40.33	27.58	5.39	30.18	43.12	74.00	-30.88	Horizontal
2310.00	33.84	27.59	5.38	30.18	36.63	74.00	-37.37	Vertical
2390.00	40.02	27.58	5.39	30.18	42.81	74.00	-31.19	Vertical
2400.00	41.25	27.58	5.39	30.18	44.04	74.00	-29.96	Vertical

Average value:

Frequency (MHz)	Read Level (dBuV)	Antenna Factor (dB/m)	Cable Loss (dB)	Preamp Factor (dB)	Level (dBuV/m)	Limit Line (dBuV/m)	Over Limit (dB)	Polarization
2310.00	27.96	27.59	5.38	30.18	30.75	54.00	-23.25	Horizontal
2390.00	33.21	27.58	5.39	30.18	36.00	54.00	-18.00	Horizontal
2400.00	33.87	27.58	5.39	30.18	36.66	54.00	-17.34	Horizontal
2310.00	26.05	27.59	5.38	30.18	28.84	54.00	-25.16	Vertical
2390.00	33.44	27.58	5.39	30.18	36.23	54.00	-17.77	Vertical
2400.00	33.89	27.58	5.39	30.18	36.68	54.00	-17.32	Vertical

Test channel:	Highest channel
---------------	-----------------

Peak value:

Frequency (MHz)	Read Level (dBuV)	Antenna Factor (dB/m)	Cable Loss (dB)	Preamp Factor (dB)	Level (dBuV/m)	Limit Line (dBuV/m)	Over Limit (dB)	Polarization
2483.50	36.02	27.53	5.47	29.93	39.09	74.00	-34.91	Horizontal
2500.00	35.75	27.55	5.49	29.93	38.86	74.00	-35.14	Horizontal
2483.50	35.22	27.53	5.47	29.93	38.29	74.00	-35.71	Vertical
2500.00	35.18	27.55	5.49	29.93	38.29	74.00	-35.71	Vertical

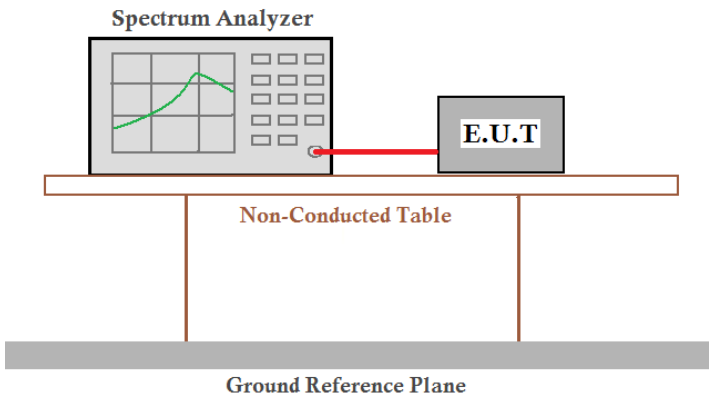
Average value:

Frequency (MHz)	Read Level (dBuV)	Antenna Factor (dB/m)	Cable Loss (dB)	Preamp Factor (dB)	Level (dBuV/m)	Limit Line (dBuV/m)	Over Limit (dB)	Polarization
2483.50	28.62	27.53	5.47	29.93	31.69	54.00	-22.31	Horizontal
2500.00	27.65	27.55	5.49	29.93	30.76	54.00	-23.24	Horizontal
2483.50	28.43	27.53	5.47	29.93	31.50	54.00	-22.50	Vertical
2500.00	28.06	27.55	5.49	29.93	31.17	54.00	-22.83	Vertical

Remark:

1. *Final Level = Receiver Read level + Antenna Factor + Cable Loss – Pre-amplifier Factor*

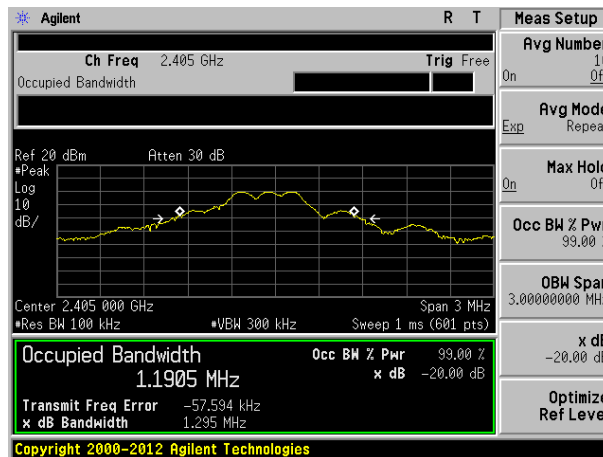
7.4 20dB Occupy Bandwidth

Test Requirement:	FCC Part15 C Section 15.249/15.215
Test Method:	ANSI C63.10:2013
Limit:	Operation Frequency range 2400MHz~2483.5MHz
Test setup:	 <p>The diagram illustrates the test setup. A Spectrum Analyzer is connected to an E.U.T. (Equipment Under Test) via a red cable. Both are placed on a Non-Conducted Table, which is supported by a Ground Reference Plane.</p>
Test Instruments:	Refer to section 6.0 for details
Test mode:	Refer to section 5.2 for details
Test results:	Pass

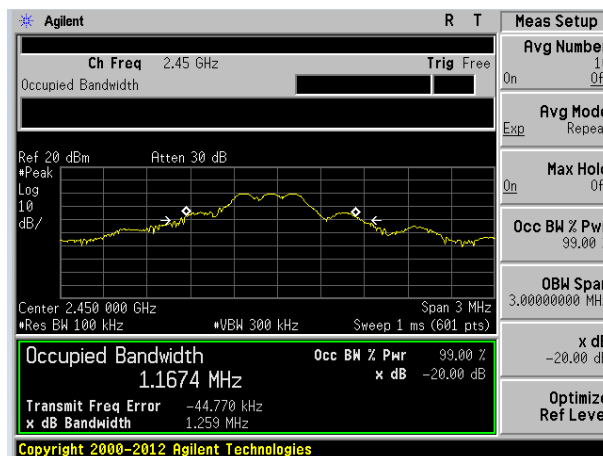
Measurement Data

Test channel	20dB bandwidth(MHz)	Result
Lowest	1.295	Pass
Middle	1.259	Pass
Highest	1.295	Pass

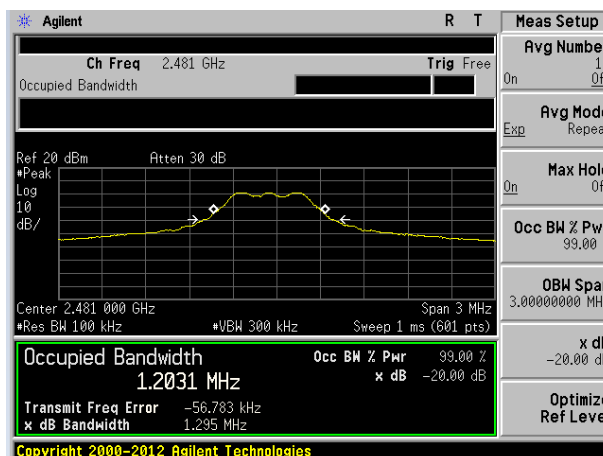
Test plot as follows:



Lowest channel



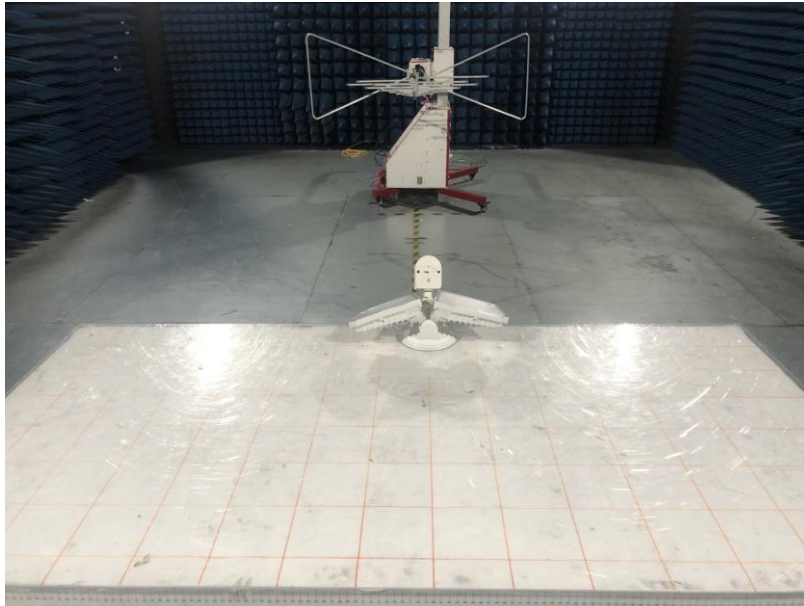
Middle channel



Highest channel

8 Test Setup Photo

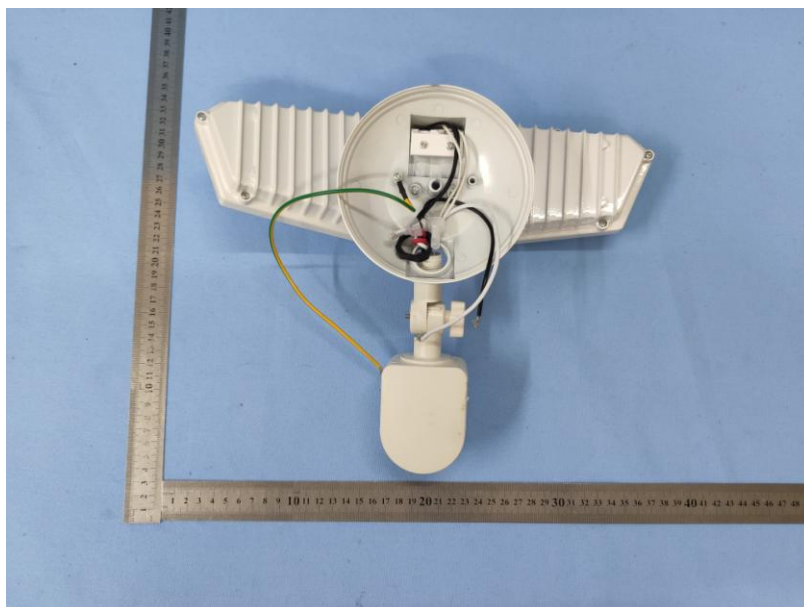
Radiated Emission

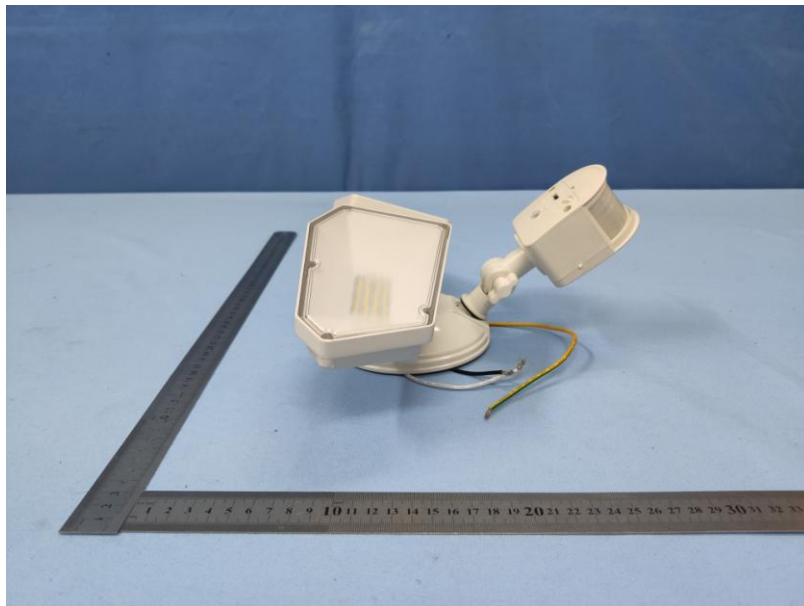


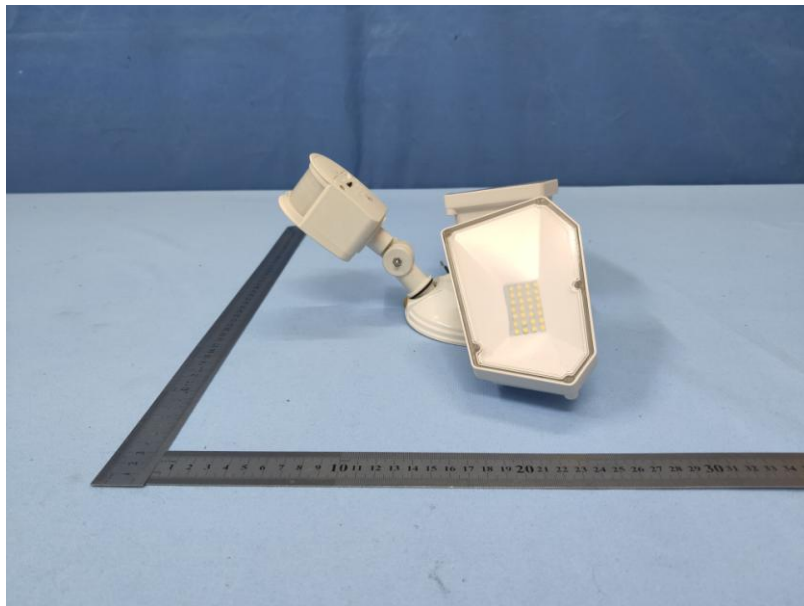
Conducted Emission

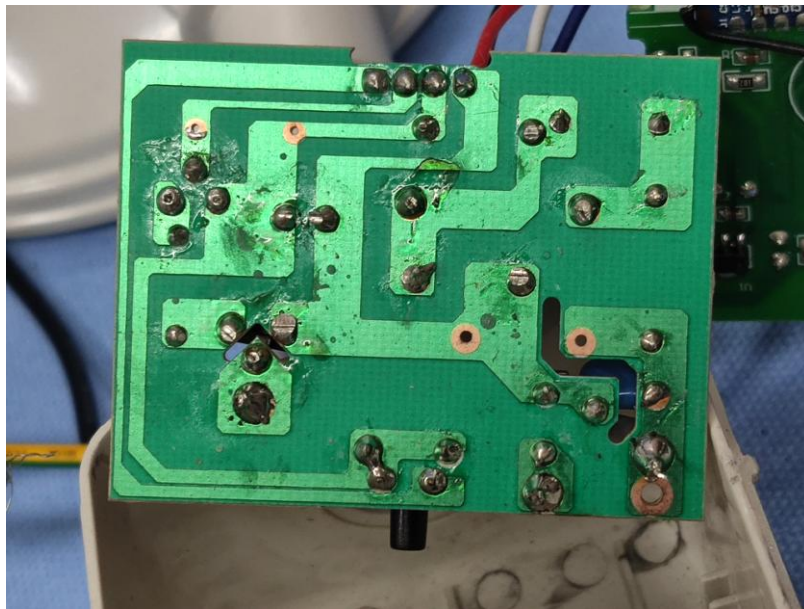


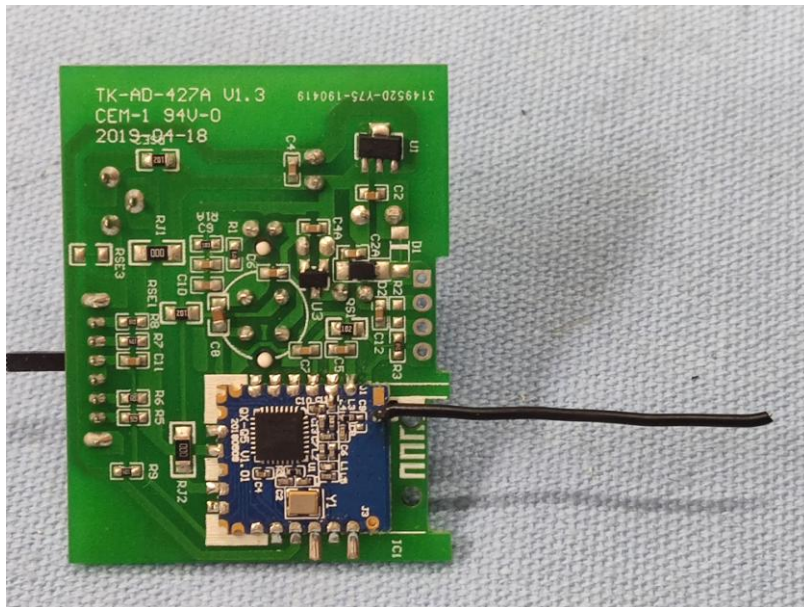
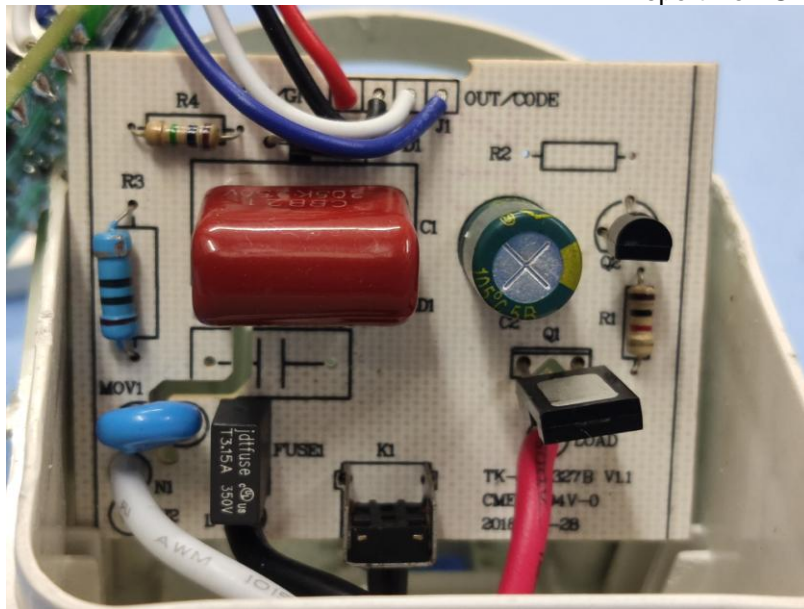
9 EUT Constructional Details

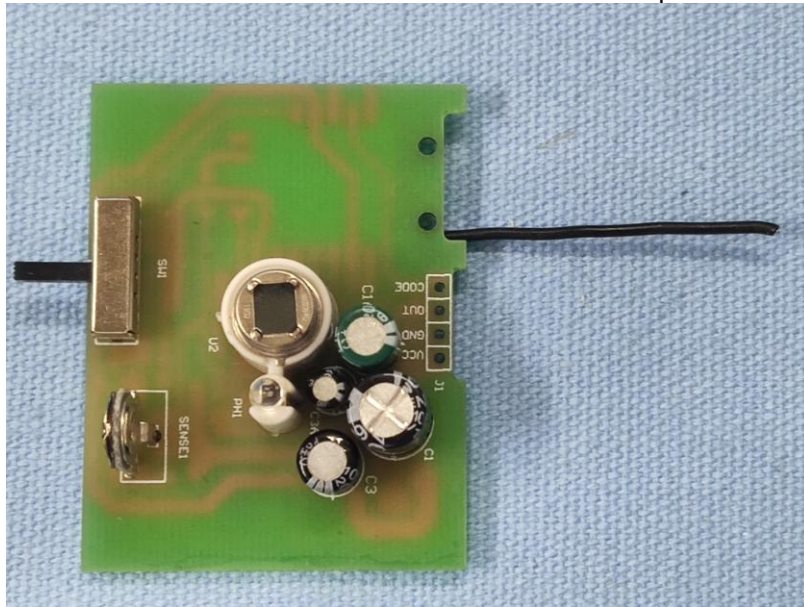












-----End-----