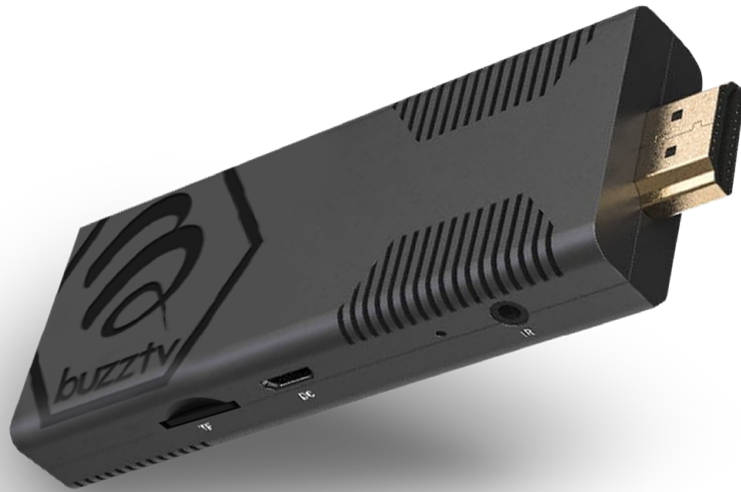


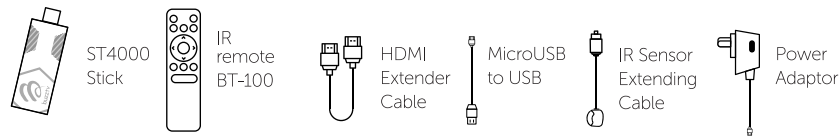


User Manual

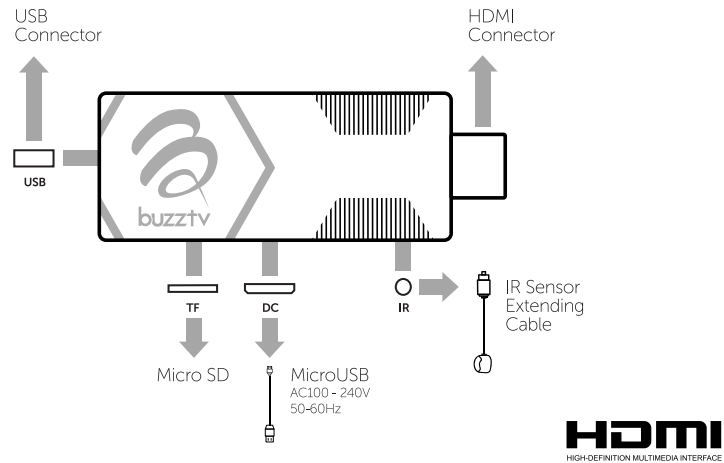
ST4000



1 Package Contents



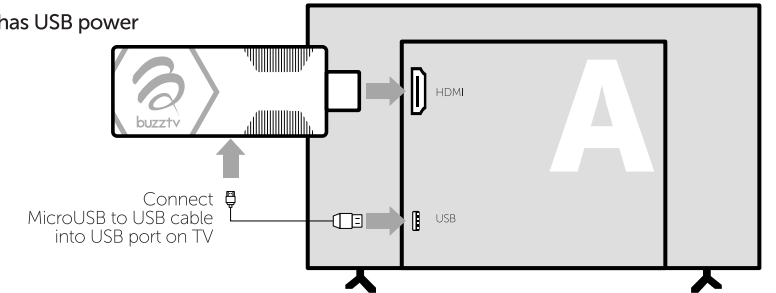
2 Connections



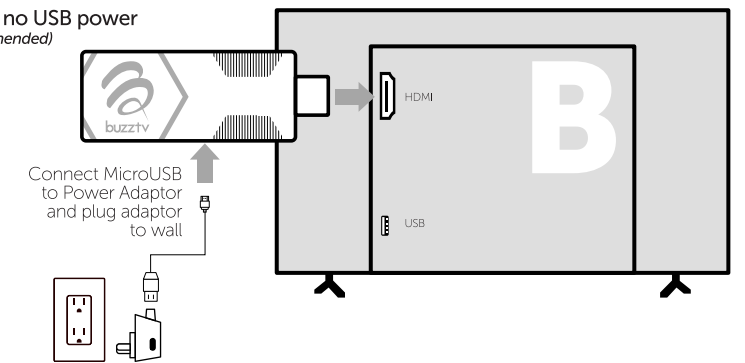
3 Installation Steps

1. Connect ST4000 Stick to your HDMI connector on your TV - or use HDMI extender cable
2. To connect power, choose one of the power suggestions listed below. (Please Note: TV compatibility is required. If unit doesn't function properly, use the power adaptor provided. Please use method B below.) Option B is highly recommended.

TV has USB power



TV has no USB power (Recommended)



4 Remote + Button List



Learning Remote Feature

Learning methods please see as below:

1. Long Press the "TV Power" + "Source" keys on the BT-100 RCU at the same time for 3 seconds until the Blue LED turns solid Blue. The RCU has now entered learning mode.
2. Press the key on the BT-100 RCU to be programmed, for example "TV Power" Key, the Blue LED will start blinking.
3. Aim the TV RCU that you want to learn from towards the front of this BT-100 RCU (Distance less than 3cm). Press the button on the TV RCU that you want the BT-100 RCU remote to learn from. If the BT100 RCU is programmed correctly the Blue LED on the BT-100 RCU will blink 3 times then turn solid Blue. This will indicate that you have programmed it properly.
4. Repeat Steps 2-3 for the "Source" button.
5. Short press "TV Power" key + "Source" key at the same time on the BT-100 RCU to exit learning remote.

5 Troubleshooting

Warning: Under no circumstances should you try to repair the ST4000 by yourself, as this will invalidate the warranty. Do not open it as there is a risk electrical shock. If any fault occurs, please first check with this troubleshooting checklist. If you are unable to remedy a problem by following this guide, contact your dealer for help.

Problem	Solution
No Power	<ul style="list-style-type: none"> • Check if the power adaptor is properly connected to the power and the TV box • Press the power on the remote controller to turn on the power
No Picture	<ul style="list-style-type: none"> • Re-Connect the ST4000 • Check if the ST4000 & TV are powered on
No sound or distorted sound	<ul style="list-style-type: none"> • Adjust the volume • Check that the speakers are connected correctly
The TV box does not respond to the remote control	<ul style="list-style-type: none"> • Aim the remote control directly at the sensor on the front of the TV • Reduce the distance to the TV box • Replace batteries in the remote control • Possibility of system crash, disconnect and reconnect the power supply
No sound during playback	<ul style="list-style-type: none"> • The audio codec may not be supported by the ST4000 • Check the volume
The contents of the USB or flash drive cannot be read	<ul style="list-style-type: none"> • The USB or flash drive format is not compatible with the box • If one of the drives can not be read, please turn off the unplug the ST4000 for 30 seconds, then re-plug the ST4000 stick into the TV HDMI port
Slow operation of the USB flash drive	<ul style="list-style-type: none"> • Large file size or high resolution USB flash drive takes longer time to read and display on the TV screen

6 Warranty Information

For warranty information and registration, please visit: www.buzztv.com/register

www.buzztv.com/support
cs@buzztv.com

FCC Notice:

This device complies with Part 15 of the FCC rules. Operation is subject to the following two conditions: (1) This device may not cause harmful interference. (2) This device must accept any interference received, including interference that may cause undesired operation.

NOTE: This equipment has been tested and found to comply with the limits for a Class B digital device, pursuant to Part 15 of the FCC rules. These limits are designed to provide reasonable protection against harmful interference in a residential installation. This equipment generates uses and can radiate radio frequency energy and, if not installed and used in accordance with the instructions, may cause harmful interference to radio communications. However, there is no guarantee that interference will not occur in a particular installation. If this equipment does cause harmful interference to radio or television reception, which can be determined by turning the equipment off and on, the user is encouraged to try to correct the interference by one or more of the following measures:

- Reorient or relocate the receiving antenna.
- Increase the separation between the equipment and receiver.
- Connect the equipment into an outlet on a circuit different from that to which the receiver is connected.
- Consult the dealer or an experienced radio/TV technician for help.

WARNING: Changes or modifications not expressly approved by the party responsible for compliance could void the user's authority to operate the equipment.

RF Exposure

The equipment complies with FCC radiation exposure limits set forth for an uncontrolled environment. This device should be installed and operated with minimum distance 20cm between the radiator & your body.