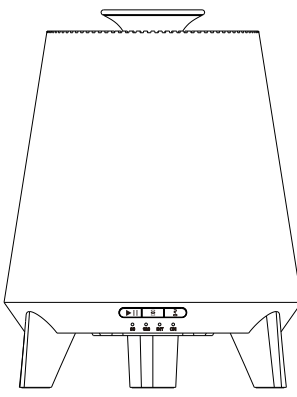


Aroma Diffuser

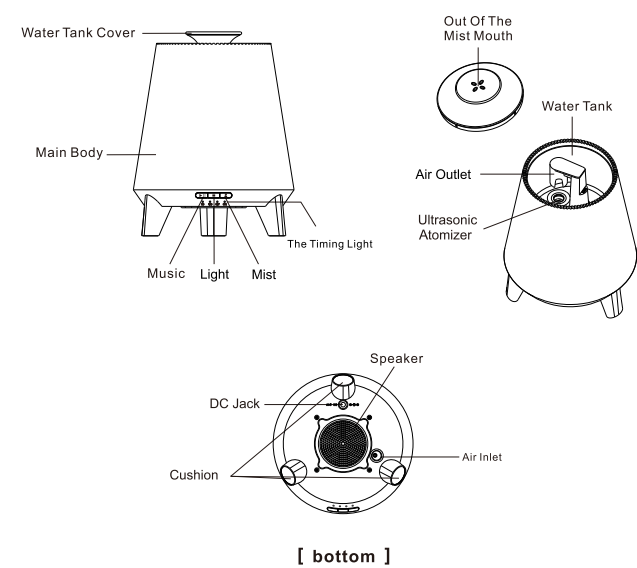
User Manual

Model: Dn-829



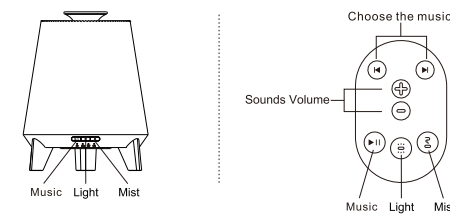
Arroma Diffuser

This aroma diffuser uses ultrasonic waves to instantly vaporize water and essential oil in the tank, to produce a cool, moist fragrant mist.



Arroma Diffuser

ILLUSTRATION



Function indication of diffuser touch button:

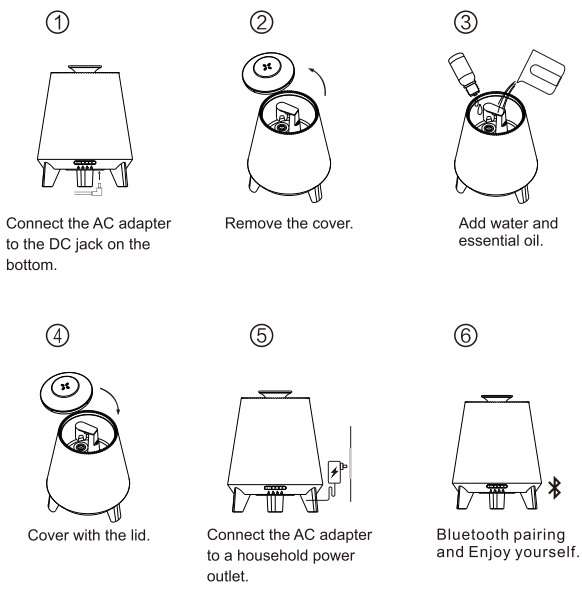
- **Music:** the music key control level is On/Off for music speaker.
- **Light:** Changes the colour of the LED lights emitted by the unit: Cycle Colors/Lock Colour light/warm white light/Off.
- **Mist:** The amount of time to run the unit for: set to "On" by default: 60min/120min/Intermittent (15 secs on, 15 secs off)/On (Continuous).

SPECIFICATIONS

Product Size	φ176*225mm
Weight(excluding adapter)	Approx. 520g
Power Input/Output	AC100-240V 50/60Hz / DC 24V/0.65A
Time Mode	60min/120min/INT/ON
Tank Capacity	300ML
LED Light	Colorful light/Warm white light
Materials	PP+ABS(remote control)
Accessories	Adapter and user manual
Method of Mist Production	Ultrasonic vibration at approx. 2.4MHz

Arroma Diffuser

HOW TO USE



Arroma Diffuser

CLEANING AND STORAGE

Please read and follow these instructions, be ware of all warnings, and keep this document for future reference.

1. Cut off the power and then remove the tank cover, always place the unit on a stable, flat surface and ensure that it is not tilted.



2. Drain the remaining water in the water tank.
3. Wipe using a cloth dipped in mild detergent dissolved in warm water and wrung well. Use a cotton ball to care for the ultrasonic plate on the bottom of the water tank. Use a cloth or cotton ball to care for the unit cover. Caution: Don't directly touch or apply a strong force to the ultrasonic plate on the bottom center of the water tank.
4. After you have cleaned the water tank, add tap water. it and operate the timer for 30 minutes. Drain, wipe dry and then dry thoroughly.
5. To remove essential oil or dirt adhered to the outside of the unit cover or water tank, wipe with a cloth that has been dipped in mild detergent dissolved in warm water and wrung well.
6. If dirt accumulates near the nozzle, remove the unit cover and tank cover and wash with mild kitchen detergent. Hold the tank cover and shake to remove the water inside, naturally dry before next use.
7. Make sure that no hair or dust is on the air intake filter on the bottom. Use your hand or a cotton swab to remove any hair or dust. Caution: The filter cover cannot be removed.

Caution: Always use mild detergent to clean. Chlorine, acid and enzyme-type detergents remaining inside pose the danger of emitting noxious gases. If mist emission is interrupted during use, use a cotton swab to clean the vent of the ultrasonic plate nozzle and the air intake.

Arroma Diffuser

SAFETY INFORMATION

Please read and follow these instructions, be ware of all warnings, and keep this document for future reference.

- Set up your product in accordance with product manual and place your product in a stable location or it will fall and cause product damage or bodily harm.
- **Prohibition:** Do not place on an uneven surface, a high location such as a shelf, or an unstable location. Water spilled when the unit is knocked over them may result in damage to the unit and injury.
- Do not use your product near water, including dripping or splashing (e.g. Indoor fountain) or near object filled with liquids, such as flower vase or fish tanks.
- Do not use your product near heat sources(e.g.radiators, heat registers, stoves, open flame, such as lighted candles, or other heat producing devices, such as audio amplifiers or TVs).
- Do not insert or remove the AC adapter with wet hands. Doing so may cause electric shock or injury.
- Do not immerse the unit or AC adapter in water or get it wet. Doing so may cause electric shock or injury.
- Do not use AC adapter near heat resources. Do not damage, bend, pull or twist the power cord of the AC adapter excessively. Doing so may damage the power cord and may cause fire or electric shock.
- Do not use the power cord of the AC adapter or plug when it is damaged or when receptacle of the outlet is loose. Doing so may cause electric shock, short circuit or spark a flame.
- If an abnormally such as an unusual smell or sound occurs in the unit or AC adapter, or the unit becomes unusually hot, or mist abnormally stops, immediately remove the AC adapter from the outlet and refrain from usage. If not, it may cause fire or electric shock.
- Do not block ventilation openings or put objects into product vents, ports or slots. Doing so may create an electric shock or fire hazard. Maintain a minimum distance of at least 15cm (6 inches) around your product for sufficient ventilation. Covering ventilation openings with items such as tablecloths or curtain may impede ventilation and cause a fire.
- Do not block the mist nozzle or the air intake on the bottom. Doing so may prevent proper operation which may result in damage, faulty operation, overheating or malfunction.
- All servicing and repair must be operated by qualified service personnel. Servicing is required when your product does not operate normally, the power cord/plug has been damaged, the product has been exposed to water, rain, liquid or moisture, the product has been dropped, or an object has been inserted into a product port or vent.
- Please do not disassemble and make any modifications to the product, this may lead to electric shock, fire or electric leakage.

Arroma Diffuser

PRECAUTIONS

- Turn off all functions and unplug the AC adapter before moving the unit, or it may result in malfunction, fire, electric shock or injury.
- Do not removed the unit cover to add water or essential oil during operation. If you want to do so, turn off the power first. If not, water or essential oil may be emitted and result in malfunction, fire or electric shock.
- Since the unit cover is not fixed to the unit, always hold the bottom of the unit to move the machine. If not, it may fall or knocked off.
- Use the product in an environment within the temperature of 0°C - 40°C.
- Do not use the product in your car.
- Place the product in a proper place to avoid injury to children.
- This is not toy, children under 8 are forbidden to use.
- Do not remove the unit cover during operation.
- Water or essential oil may be emitted and result in damage to surrounding items or malfunction.
- Do not touch, damage or push the ultrasonic plate directly with your hand. Doing so may cause an accident or malfunction.
- Remove the AC adapter from the outlet when product is not in use.
- Insulation deterioration may cause fire due to electrical leakage or electric shock.
- Remove dust from the power source plug regularly.
- Dust accumulation and humidity may cause insulation failure which results in fire, electric shock or malfunction.
- Replace the water in the water tank with fresh tap water everyday. Clean the inside of the tank regularly and always ensure the tank is clean before use.
- Clean the tank interior at least every 2 to 3 days and clean water and tools before use. Use without cleaning may result in the adhesion of water scale or mineral which hamper performance. There is also risk of bacteria and mildew growth which may emit foul odor and or be a hazard to the health. Use extra caution as mildew and bacteria may cause hypersensitive reactions in some people.
- Use of mineral water, alkaline ion water, well water or purified water may result in increased water scale adhesion or easier growth of mildew or bacteria. Do not use hot water because it causes warping and erroneous operation.
- Use only essential oil containing 100% naturally extracted ingredients(refined oil). Do not use a synthetic perfume.

Arroma Diffuser

PRECAUTIONS

- Draining direction -- Follow the instructions in the User's Manual for proper cleaning method and draining direction.
- If drained in an incorrect direction, water may enter the unit electrical area inside and cause fire, electric shock or a short circuit.
- The temperature of the unit may be high during use and after it stops.

TROUBLE SHOOTING

Please refer to the below in the event of the product operating abnormally.

Symptom	Possible Cause	Solution
Will not switch on-switch off early	<ul style="list-style-type: none"> ● Is there enough water in the tank? ● Are the power cables connected properly? 	<ul style="list-style-type: none"> ● Add water to the tank. ● Disconnect, check cables, reconnect and try again.
No mist or abnormal mist	<ul style="list-style-type: none"> ● Not enough water? ● Too much water? ● Dirt on the ultrasonic plate? ● Inner shell and outer shell are not installed properly? ● Dirt on the air suction port on the underside of the base? 	<ul style="list-style-type: none"> ● Add suitable amount of water in the tank. Water must never be filled over 300ML (MAX) line. ● Please refer to maintenance instructions, remove or re-install correctly, so vapors can be released freely. ● Clean the air suction port. ● Restricted airflow will affect mist.
Water leakage from product	<ul style="list-style-type: none"> ● Inner shell and outer shell are not installed properly? ● Has the unit been tipped over? ● Low temperature or high humidity? 	<ul style="list-style-type: none"> ● Remove and reinstall correctly, so vapors can be released freely. ● Follow accidental leakage instructions. ● Under these conditions, the mist may condense quickly into water droplets.

Arroma Diffuser

Warning

This equipment has been tested and found to comply with the limits for a Class B digital device, pursuant to part 15 of the FCC Rules. These limits are designed to provide reasonable protection against harmful interference in a residential installation. This equipment generates, uses and can radiate radio frequency energy and, if not installed and used in accordance with the instructions, may cause harmful interference to radio communications. However, there is no guarantee that interference will not occur in a particular installation. If this equipment does cause harmful interference to radio or television reception, which can be determined by turning the equipment off and on, the user is encouraged to try to correct the interference by one or more of the following measures:

- Reorient or relocate the receiving antenna.
- Increase the separation between the equipment and receiver.
- Connect the equipment into an outlet on a circuit different from that to which the receiver is connected.
- Consult the dealer or an experienced radio/TV technician for help.

⚠ Caution: Any changes or modifications to this device not explicitly approved by manufacturer could void your authority to operate this equipment.

This device complies with part 15 of the FCC Rules. Operation is subject to the following two conditions: (1) This device may not cause harmful interference, and (2) this device must accept any interference received, including interference that may cause undesired operation.

This equipment complies with FCC radiation exposure limits set forth for an uncontrolled environment. This equipment should be installed and operated with minimum distance 20cm between the radiator and your body.

This transmitter must not be co-located or operating in conjunction with any other antenna or transmitter.