

# Mini HBQ-i8TWS

FCC ID:2AOZM-HBQYZB

WIRELESS TWS MUSIC EARPHONE  
V4.2+EDR

## Manual



### First Part: TWS(True wireless stereo) Earphones

Product description (TWS wireless Earphones)



#### 1、 Power on/off



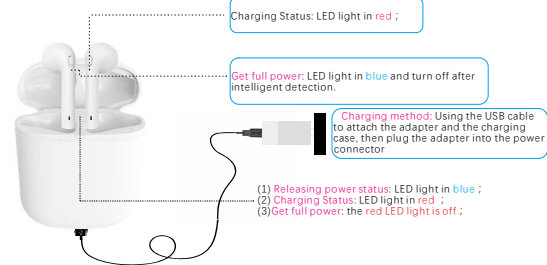
**Power on:**  
Long press the multi-function button about 3 seconds and the led flashing in blue, it shows the earphone is power on. Long press the multi-function button about 5 seconds and the led flashing in red and blue alternately, that is the pairing status.



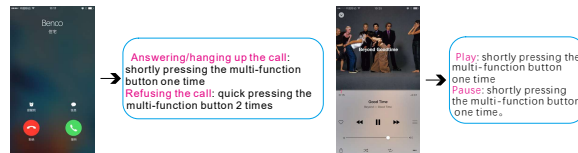
**Power off:**  
Long press the multi-function button about 5 seconds and the led flashing in red then off, it shows the earphone is power off.

1

#### 2.Charging for earphone and charging case ( LED light status)

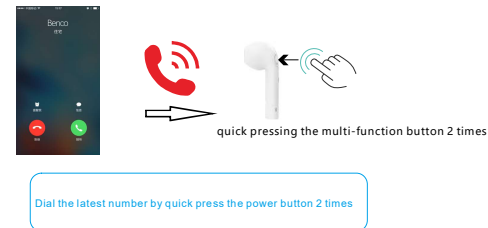


#### 3、 Answering/hanging up/refusing the call

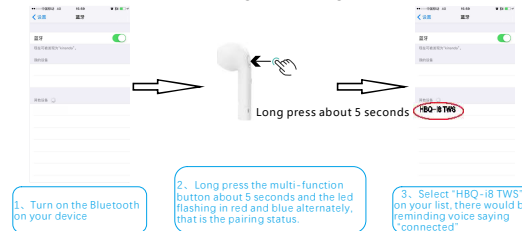


2

#### 4、 Redial last phone call



#### 5、 Bluetooth Earphone Pairing Steps(single mode)



3

## 6. Twins Pairing

1. Long press the power button of the pair of earphones at the same time until the led flash in blue and red alternately. The both of them have a voice say "power on" and then "pairing"



2. Double press one of them will have a voice "search for select" and wait for one led of earbud flash in blue and red alternately will have a voice "pairing success", that it is the pairing status.



3. Please turn on the "Bluetooth" on your cellphone and choose "HBQ-i8 TWS" on your list. The led flash will be slowly in blue when connected.



## Second Part: Specifications

True wireless stereo (TWS), real no wires design, individual left and right channel, HIFI sound, both the left and right earbud are Bluetooth enabled, could be used separately, or used as one pair.

Bluetooth version:	V4.2+EDR, ultra low consumption
Bluetooth Mode:	A2DP1.3/HFP1.6/HSP1.2/AVRCP1.6/D11.3
Bluetooth Frequency:	2.402~2480GHZ
Bluetooth Range:	12 meters with no obstades
Battery capacity:	Earbud: built-in 60mah rechargeable Li-ion battery Charging dock: 950mah (optional)
Talk/Play time:	Single earbud mode: 3-4 hours One Pair earbuds mode: 2-3 hours
Standby time:	Single earbud mode: 120 hours Pair earbuds mode: 70 hours
Charging time:	1-2 hours
Net Weight	Earbuds: 4g*2    Charging case: 51g
Gross weight	148g
Packing box size	100*100*35mm

## The third part: packaging and accessories



Headset X2, Charging bunker X1, instruction X1, charging line X1, packing box X1

## Warnings:

1. Please do not overuse this earphone or put it under heavy pressure, keep away from wet and heat.
2. Keep away from WIFI, router or other high frequency transmitting equipment to prevent interruption of signal receiving.
3. Please use this earphone under its working range (10meters), and the effect would be better if there is no obstacle between the connected devices.
4. Use this Bluetooth earphone to connect any device with Bluetooth function

6

## FCC statement:

Changes or modifications not expressly approved by the party responsible for compliance could void the user's authority to operate the equipment.

This device complies with Part 15 of the FCC Rules. Operation is subject to the following two conditions: (1) this device may not cause harmful interference, and (2) this device must accept any interference received, including interference that may cause undesired operation.

This equipment has been tested and found to comply with the limits for a Class B digital device, pursuant to Part 15 of the FCC Rules. These limits are designed to provide reasonable protection against harmful interference in a residential installation. This equipment generates, uses and can radiate radio frequency energy and, if not installed and used in accordance with the instructions, may cause harmful interference to radio communications. However, there is no guarantee that interference will not occur in a particular installation. If this equipment does cause harmful interference to radio or television reception, which can be determined by turning the equipment off and on, the user is encouraged to try to correct the interference by one or more of the following measures:

- Reorient or relocate the receiving antenna.
- Increase the separation between the equipment and receiver.
- Connect the equipment into an outlet on a circuit different from that to which the receiver is connected.
- Consult the dealer or an experienced radio/TV technician for help.