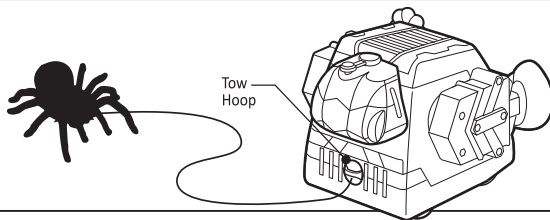


## TOW PRANK

Use the Tow Hoop on PRANKBRO's back to tie prank objects such as a fake dollar bill, fake spider or fake cockroach.  
NOTE: Attachments and Tow-line not included.



## FAQ

### What is the remote control range?

Depending on environment, generally PRANKBRO can be controlled within an 80 feet / 25m range. Avoid operating near a WiFi router and avoid having brick walls between the remote controller and PRANKBRO.

### What surfaces can PRANKBRO travel on?

PRANKBRO works well on flat surfaces such as ceramic or wooden floor tiles, flat concrete floor etc. It can travel on short pile carpets but speed will be reduced.

### Can multiple PRANKBROs work in the same area?

Yes. A maximum of 2 PRANKBROs can work in close proximity. Ensure they are operating on different radio channels.

## TROUBLESHOOTING

### PRANKBRO is powered on, but doesn't respond to remote control input.

Check the channel switch on both your PRANKBRO and your remote controller. Ensure they are both on the same channel, either Channel 1, or Channel 2. If it still doesn't respond, change batteries in the remote.

**PRANKBRO restarts OR shuts down while performing a task/command.** PRANKBRO's batteries are flat, replace with fresh batteries.

### The remote control is unreliable when 2 PRANKBROs are in the same area.

Ensure that the 2 PRANKBROs are using different radio control channels. No more than 2 active PRANKBROs can operate at once.

### Audio quality in Talk mode is unclear/inaudible.

When talking, ensure to talk directly into the Remote Control's microphone. To improve clarity of the audio try increasing the distance between your mouth and the microphone to approximately 10cm/4inches.

If audio quality has not improved, the RF signal may have been interfered with. Move both the PRANKBRO and Controller away from any active electronic devices (particularly WiFi router). You can also try switching to the second Radio control channel.

Hereby, Moose Enterprise (INT) Pty Ltd, declares that this radio-controlled toy is in compliance with the essential requirements and other relevant provisions of 2014/53/EU. The full text of the EU declaration of conformity is available at the following internet address: [www.moosetoys.com/EU\\_RED\\_DOC](http://www.moosetoys.com/EU_RED_DOC)

## FCC STATEMENT

REMOTE: FCC ID: 2A0Z9MOOSE005  
IC: 23624-MOOSE005

ROBOT: FCC ID: 2A0Z9MOOSE006  
IC: 23624-MOOSE006

Frequency band: 2.4GHz - 2.4835GHz  
Maximum transmitting power: 10mW

This device complies with Part 15 of the FCC Rules and this device contains licence-exempt transmitter(s)/receiver(s) that comply with Innovation, Science and Economic Development Canada's licence-exempt RSS(s). Operation is subject to the following two conditions: [1] This device may not cause harmful interference, and [2] this device must accept any interference received, including interference that may cause undesired operation.

**CAUTION:** Changes or modifications not expressly approved by the party responsible for compliance could void the user's authority to operate the equipment.

**NOTE:** This equipment has been tested and found to comply with the limits for a Class B digital device, pursuant to Part 15 of the FCC Rules.

These limits are designed to provide reasonable protection against harmful interference in a residential installation. This equipment generates, uses and can radiate radio frequency energy, and, if not installed and used in accordance with the instructions, may cause harmful interference to radio communications. However, there is no guarantee that interference will not occur in a particular installation. If this equipment does cause harmful interference to radio or television reception, which can be determined by turning the equipment off and on, the user is encouraged to try to correct the interference by one or more of the following measures:

- Reorient or relocate the receiving antenna.
- Increase the separation between the equipment and receiver.
- Connect the equipment into an outlet on a circuit different from that to which the receiver is connected.
- Consult the dealer or an experienced radio/TV technician for help.

**WARNING:** DO NOT PLAY SOUNDS CLOSE TO YOUR EAR! DO NOT AIM AT EYES OR FACE! NOT SUITABLE FOR CHILDREN UNDER 3 YEARS. WATER BLASTER WILL LEAVE WATER ON THE FLOOR. DO NOT USE ON LAMINATE, MARBLE, OR OTHER SURFACES THAT BECOME SLIPPERY WHEN WET TO AVOID SLIPS AND FALLS. DO NOT USE WATER BLASTER AROUND ELECTRONICS OR OTHER ITEMS WHICH MAY BE DAMAGED BY WATER. DO NOT ATTACH FOREIGN MATERIALS TO PUNCHING FIST, AS DOING SO MAY DAMAGE THE TOY OR LEAD TO INJURY. THIS TOY PRODUCES FLASHES THAT MAY TRIGGER EPILEPSY IN SENSITISED INDIVIDUALS.

**CAUTION:** ADULT SUPERVISION SHOULD BE ENCOURAGED FOR YOUNG CHILDREN. PLEASE REMOVE ALL PACKAGING ATTACHMENTS BEFORE GIVING THIS PRODUCT TO A CHILD. KEEP HAIR AND LOOSE CLOTHING AWAY FROM MOVING PARTS. ALWAYS REMOVE WATER TANK BEFORE FILLING; DO NOT IMMERSE TOY IN WATER. DO NOT EAT.

**IMPORTANT:** INDOOR TOY. DO NOT USE ON TABLE OR STAIRS. DROPPING PRANKBRO MAY CAUSE DAMAGE THAT PREVENTS PRANKBRO FUNCTIONS. PLEASE RETAIN PACKAGING DETAILS FOR FUTURE REFERENCE SINCE THEY CONTAIN IMPORTANT INFORMATION. READ ALL INSTRUCTIONS CAREFULLY BEFORE USING PRODUCT. COLORS AND CONTENTS MAY VARY. WORKS BEST ON FLAT, LEVEL, HARD SURFACE. ENSURE DIRECT LINE OF SIGHT FOR BEST RANGE. DRAW WATER TANK BEFORE STORAGE.

CONTENTS: 1 PRANKBRO, 1 REALLY RAD REMOTE, 1 WATER BLASTER ATTACHMENT (FLOWER), 1 INSTRUCTION MANUAL

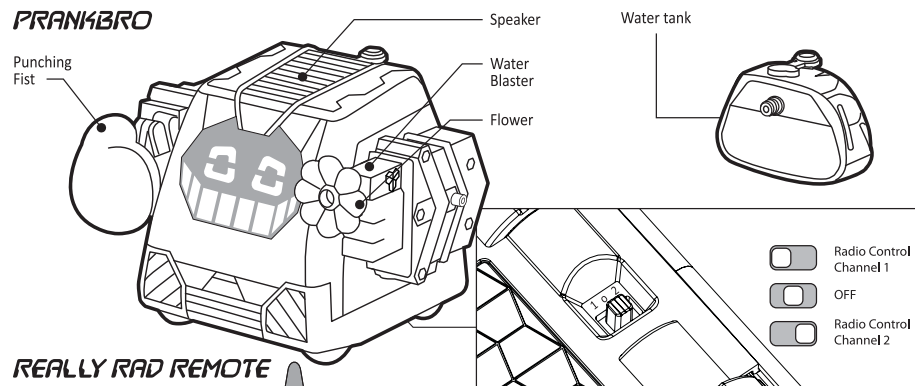


# PRANKBRO & REALLY RAD REMOTE

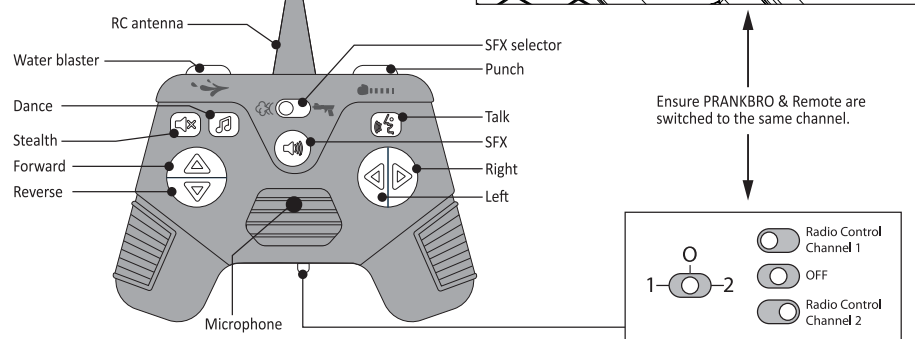
## INSTRUCTION MANUAL

**WARNING:**  
CHOKING HAZARD - Small parts.  
Not for children under 3 years.

## PRANKBRO



## REALLY RAD REMOTE

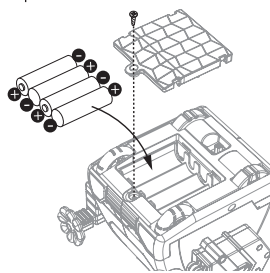


Ensure PRANKBRO & Remote are switched to the same channel.

## BATTERIES

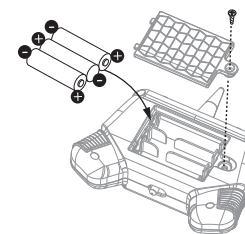
### IMPORTANT NOTE ON BATTERY REPLACEMENT

If PRANKBRO's sounds or buttons do not function properly DO NOT RETURN TO THE STORE. Replace with fresh batteries as shown.



PRANKBRO Requires 4 x AA/LR6 Batteries (Not Included).

Cross head screwdriver (not included) needed to replace batteries.



Remote Control Requires 3 x AAA/LR03 Batteries (Not Included).

Cross head screwdriver (not included) needed to replace batteries.

- Use new batteries to obtain best performance.
- Alkaline batteries recommended.
- Rechargeable batteries are to be removed from the toy before being charged.
- Rechargeable batteries are only to be charged under adult supervision.
- Non-rechargeable batteries are not to be recharged.
- Different types of batteries or new and used batteries are not to be mixed.
- Only batteries of the same or equivalent type as recommended are to be used.
- Batteries should be replaced by an adult.
- Batteries are to be inserted with the correct polarity.
- Exhausted batteries are to be removed from product.
- The supply terminals are not to be short-circuited.
- Batteries are to be removed from the product before long term storage.
- Batteries should be recycled or disposed of as per state and local guidelines.
- Do not dispose of batteries in fire.

FOR AGES  
5+



www.moosetoys.com  
©2019 Moose.  
MADE IN CHINA

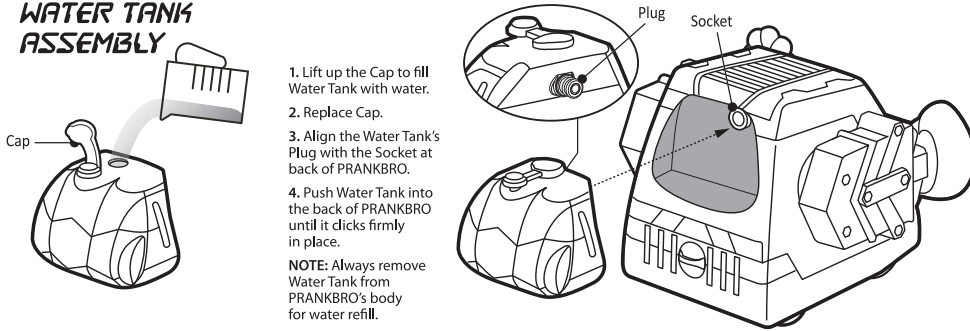
WWW.REALLYRADROBOTS.COM



## WATER TANK ASSEMBLY

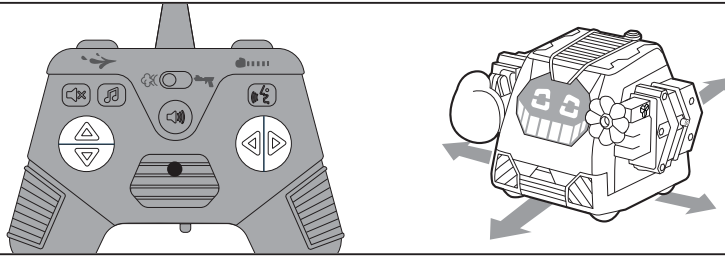
1. Lift up the Cap to fill Water Tank with water.
2. Replace Cap.
3. Align the Water Tank's Plug with the Socket at back of PRANKBRO.
4. Push Water Tank into the back of PRANKBRO until it clicks firmly in place.

**NOTE:** Always remove Water Tank from PRANKBRO's body for water refill.



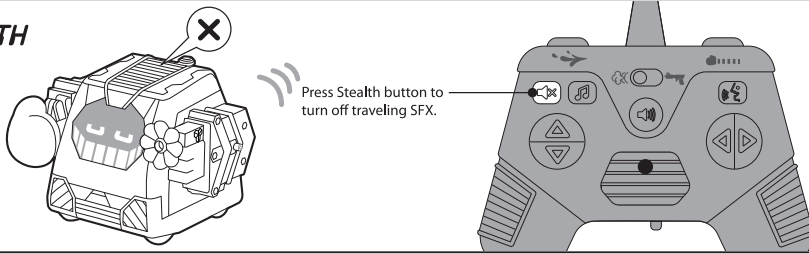
## MOVEMENT

Use the Movement buttons to control your PRANKBRO's movements.



## STEALTH

Press Stealth button to turn off traveling SFX.

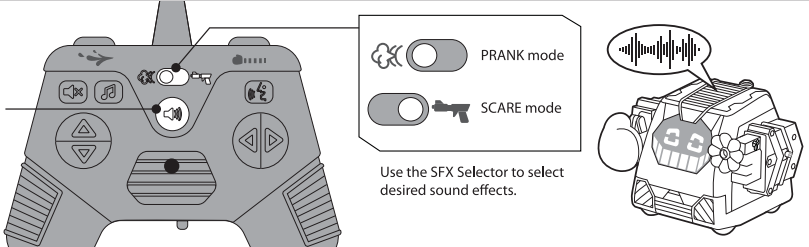


## SFX

Press the SFX button for a variety of cool sound effects!

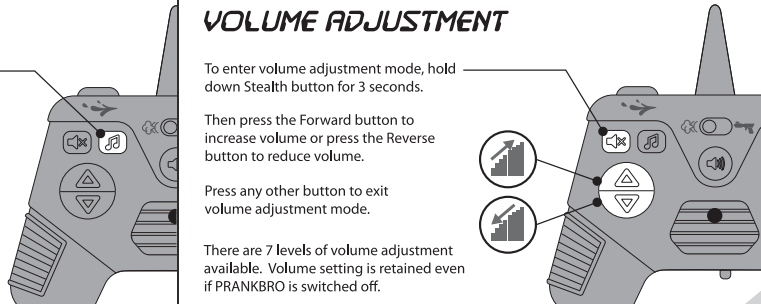
- PRANK mode
- SCARE mode

Use the SFX Selector to select desired sound effects.



## DANCE

Trigger the Dance button to see PRANKBRO's secret dance moves!!



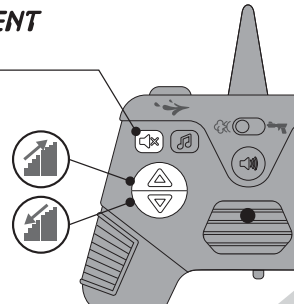
## VOLUME ADJUSTMENT

To enter volume adjustment mode, hold down Stealth button for 3 seconds.

Then press the Forward button to increase volume or press the Reverse button to reduce volume.

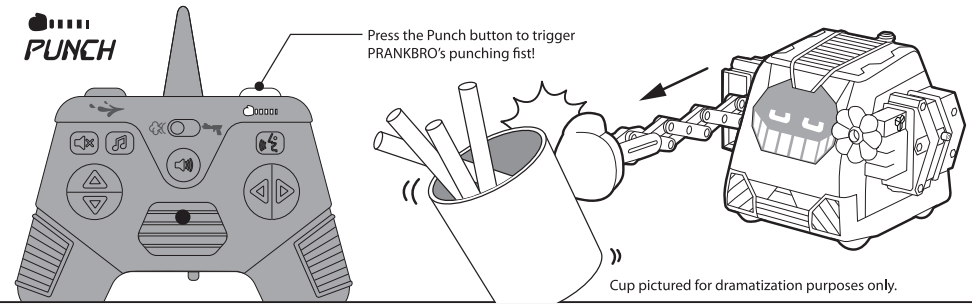
Press any other button to exit volume adjustment mode.

There are 7 levels of volume adjustment available. Volume setting is retained even if PRANKBRO is switched off.



## PUNCH

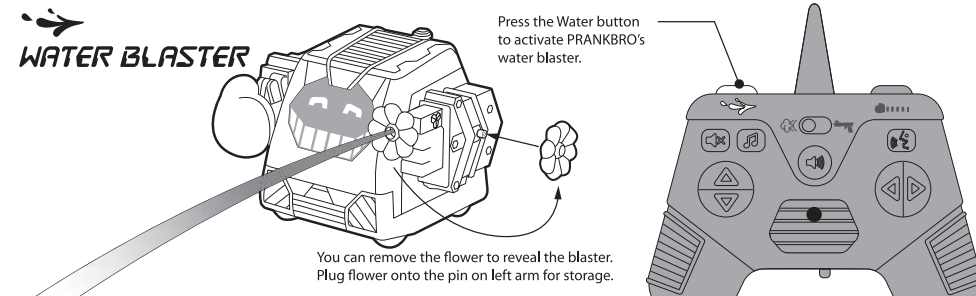
Press the Punch button to trigger PRANKBRO's punching fist!



Cup pictured for dramatization purposes only.

## WATER BLASTER

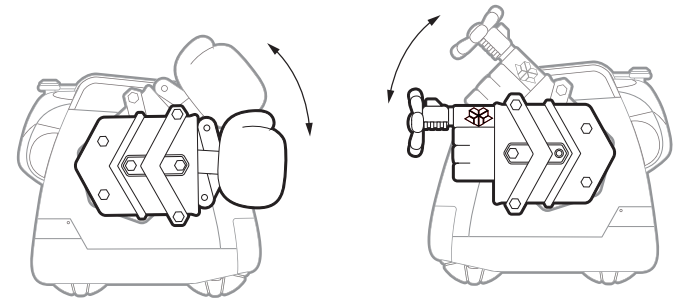
Press the Water button to activate PRANKBRO's water blaster.



You can remove the flower to reveal the blaster. Plug flower onto the pin on left arm for storage.

## AIMING

Both PRANKBRO's arms can be manually rotated to aim at various targets.



## TALK

Hold down the Talk button and speak into the microphone to talk to someone remotely.

**TIP:** For best performance, keep microphone approximately 5cm/2inches away from your mouth when speaking.

