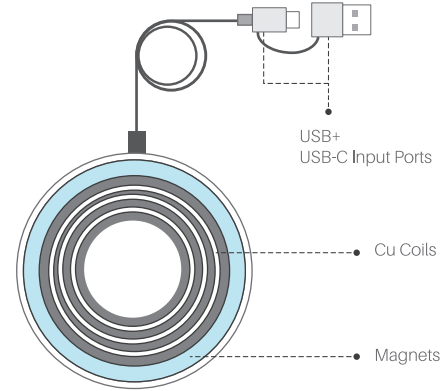




USER MANUAL

• EN • DE

Introduction



EN

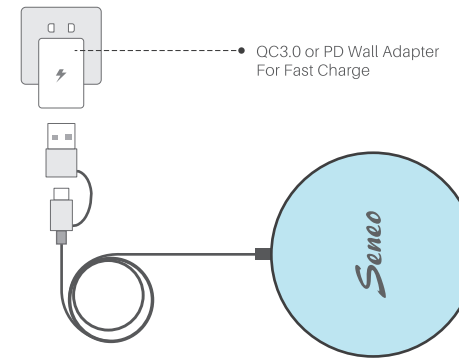
1. The inner magnets in the wireless charger attach iPhone 12 firmly.
2. The data cable had been connected with the wireless charger.

DE

1. Die inneren Magnete im kabellosen Ladegerät befestigen das iPhone 12 fest.
2. Das Datenkabel war mit dem kabellosen Ladegerät verbunden.

How to Use

1 Connected



EN

Please charge with QC3.0 or PD wall adapter for fast charging (QC3.0 or PD adapters are sold separately.)

DE

Bitte laden Sie mit QC3.0 oder PD-Wandadapter für schnelles Aufladen (QC3.0- oder PD-Adapter sind separat erhältlich).

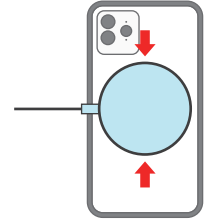
2 For Magnetic Devices

EN

Inner magnets click your phone automatically for wireless charging.

DE

Innere Magnete klicken automatisch auf Ihr Handy, um kabellos aufgeladen zu werden.



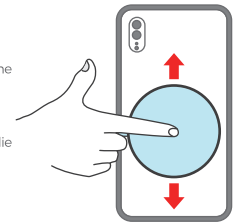
3 For Other Devices

EN

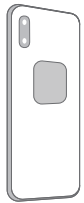
Please aim at the center of the phone when charging.

DE

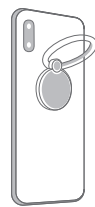
Bitte zielen Sie beim Aufladen auf die Mitte des Handys.



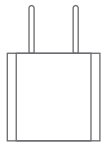
Magnetic Pad



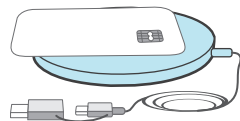
Metal Ring




5W Adapter



Credit Card




EN

 For the fast and safe charge, using a Quick Charge 2.0 or 3.0 Wall Charger is highly recommended. Other Chargers may not work well with this device.

Attentions

1. Please keep the charger away from water or other liquids.
2. Do not place the charger too close to any magnetic stripe or clip card (ID card, bank cards, etc.) to avoid magnetic failure.
3. This item is not to be used on any mobile device with metal plates, as it will cause extreme heat that may burn and /or damage the device.
4. Fast charge via the plug and USB charging cable (both support QC2.0 or QC3.0).
5. Usually we recommend that the thickness of phone case should be within 4mm(0.12 inch).
6. The standard temperature of wireless charger Qi is 55°C, but the temperature of our products should be controlled within 45°C. The charger will cut off current when abnormal heating occurs. Please contact us if any damage occurs.
7. We recommend that you turn off the power-consumption software before charging to effectively prevent the phone from overheating. When the temperature exceeds 45°C during charging, it is normal for the charging speed to slow down.

DE

 Für das schnelle und sichere Aufladen wird die Verwendung eines Schnellladegerätes 2.0 oder eines Wandladegerätes dringend empfohlen. Andere Ladegeräte funktionieren möglicherweise nicht gut mit diesem Gerät.

Aufmerksamkeiten

1. Bitte halten Sie das Ladegerät von Wasser oder anderen Flüssigkeiten fern.
2. Platzieren Sie das Ladegerät nicht zu nah an Magnetstreifen- oder Clipkarten (ID-Karten, Bankkarten usw.), um magnetische Fehler zu vermeiden.
3. Dieser Artikel darf nicht auf mobilen Geräten mit Metallplatten verwendet werden, da dies zu extremer Hitze führen kann, die das Gerät verbrennen und/oder beschädigen könnte.
4. Schnellladen über Stecker und USB Ladekabel (beide unterstützen QC2.0 oder QC3.0).
5. Normalerweise empfehlen wir, dass die Dicke des Telefongehäuses innerhalb von 4 mm (0,12 Zoll) sein sollte.
6. Die Standardtemperatur des kabellosen Ladegerätes Qi beträgt 55°C, aber die Temperatur unserer Produkte sollte innerhalb von 45°C geregelt werden. Das Ladegerät schaltet den Strom ab, wenn eine ungewöhnliche Erwärmung auftritt. Bitte kontaktieren Sie uns, wenn ein Schaden auftritt.

7. Wir empfehlen, dass Sie vor dem Laden die Software für den Stromverbrauch ausschalten, um eine Überhitzung des Telefons zu verhindern. Wenn die Temperatur während des Ladevorgangs 45°C überschreitet, ist es normal, dass sich die Ladegeschwindigkeit verlangsamt.

FCC Statement

This device complies with Part 15 of the FCC rules. Operation is subject to the following two conditions: 1) this device may not cause harmful interference, and 2) this device must accept any interference received, including interference that may cause undesired operation.

Note: This equipment has been tested and found to comply with the limits for a Class B digital device, pursuant to part 15 of the FCC Rules. These limits are designed to provide reasonable protection against harmful interference in a residential installation.

This equipment generates uses and can radiate radio frequency energy and, if not installed and used in accordance with the instructions, may cause harmful interference to radio communications. However, there is no guarantee that interference will not occur in particular installation. If this equipment does cause harmful interference to radio or television reception, which can be determined by turning the equipment off and on, the user is encouraged to try to correct the interference by one or more of the following measures:

- Reorient or relocate the receiving antenna.
- Increase the separation between the equipment and receiver.
- Connect the equipment into an outlet on a circuit different from that to which the receiver is connected.
- Consult the dealer or an experienced radio/TV technician for help.

Changes or modifications not expressly approved by the party responsible for compliance could void the user's authority to operate the equipment.

Radiation Exposure Statement

This device complies with FCC RF radiation exposure limits set forth for an uncontrolled environment. This transmitter must not be co-located or operating in conjunction with any other antenna or transmitter. During the operation of device a distance of 15 cm surrounding the device and 20 cm above the top surface of the device must be respected.

Contact us: support@iseneo.com
Copyright © SENEQ Inc. All rights reserved.