

## TROUBLESHOOTING



**Mobile Alert** – Indicates an issue that cannot be displayed on the Home Unit.  
**Resolution** – Check the mobile application.



**Connectivity Issue** – Indicates a problem with the connection between the Pool Unit and the Home Unit.  
**Resolution** –  
 1. Make sure that Pool Unit is floating vertically in the pool (it will not communicate otherwise)  
 2. Place the Home Unit closer to the Pool Unit.  
 3. Verify that the Pool Unit batteries are not drained.



**Wi-Fi Connection Issue** – Indicates a Wi-Fi connection issue.  
**Resolution** –  
 1. Check that the home Wi-Fi router is working properly.  
 2. Place the Home Unit closer to the Wi-Fi router.



**Low Battery Alert** – A blinking battery icon indicates low Home Unit battery.  
**Resolution** – Charge the Home Unit using the supplied charging cable. When the Home Unit is charging, the battery icon is on. When the battery icon turns off, it indicates full battery.



**Low Pool Unit Battery Alert** – Both mobile device icon and battery icon are simultaneously on it indicates low Pool Unit battery.  
**Resolution** – See section [Replacing Pool Unit Batteries](#).



**CAUTION:** The Home Unit battery is not replaceable.



**NOTE:** When BCone is in On mode, issues related to the Pool Unit are also indicated by the On button LED blinking red.



## REPLACING POOL UNIT BATTERIES

The Pool Unit is delivered with two Alkaline batteries already installed. When the Home Unit icons indicate low Pool Unit battery (both mobile device icon and battery icon are lit simultaneously), it is advisable to change the batteries as soon as possible.

Perform the following steps to change the Pool Unit batteries:



**TIP:** For best performance use the Alkaline batteries provided by Lifebuoy, available on the company website.



**A** Using a 5/64" (2 mm) Allen key, unscrew the two screws and remove the top cover.

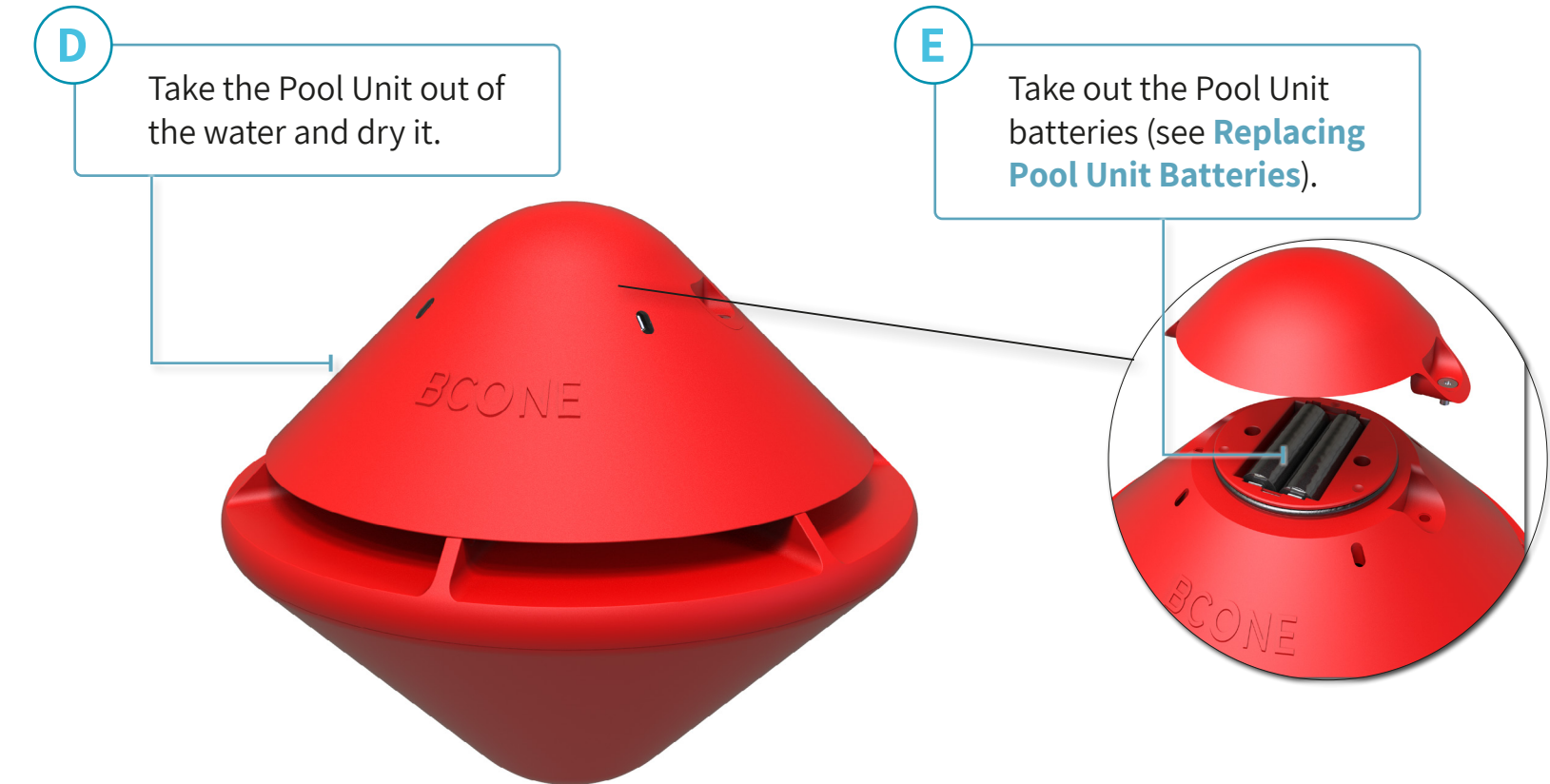
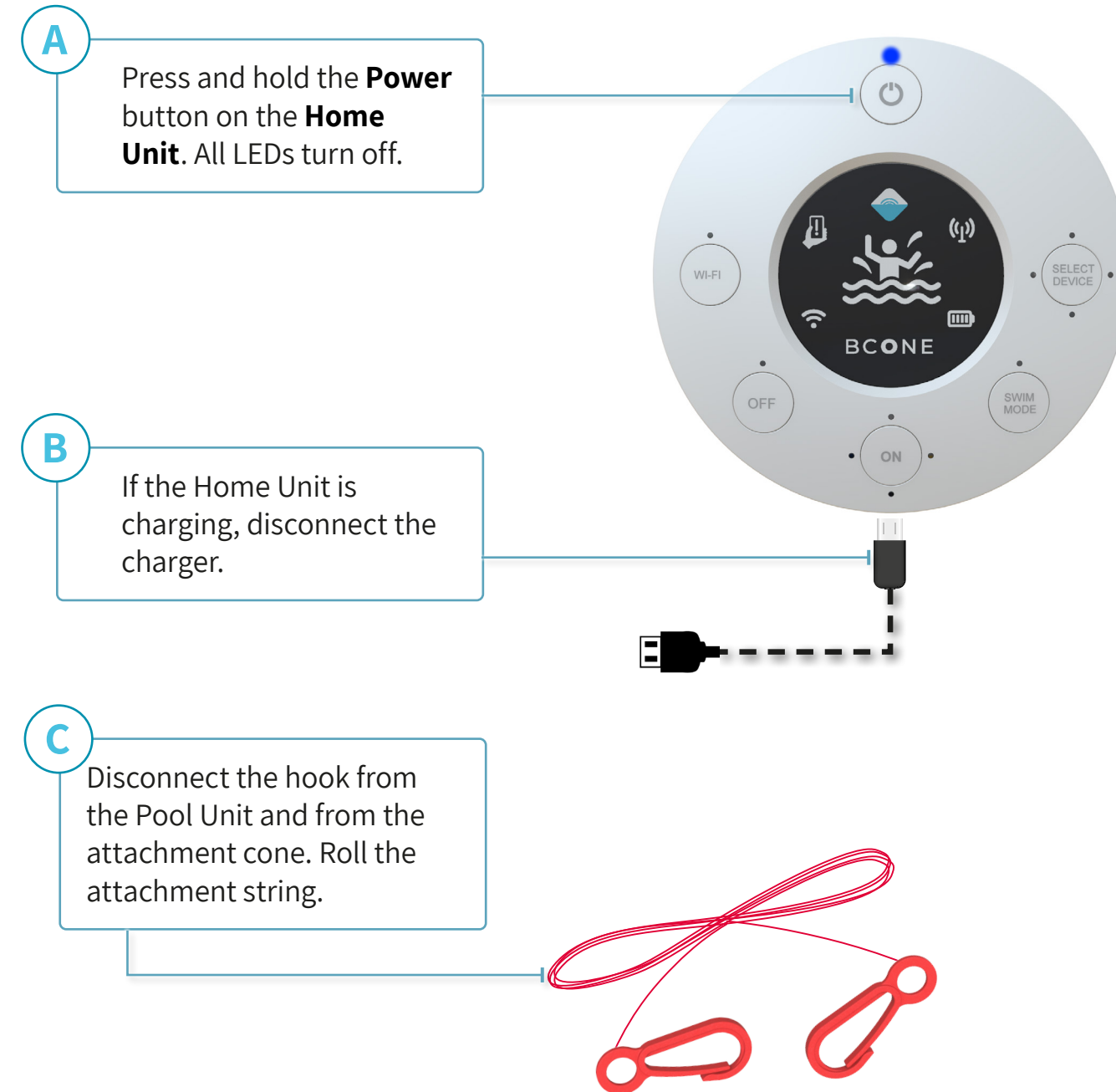
**B** Remove the old batteries and place new AA batteries. Mind the polarity of the batteries.

**C** Verify that the seal is in place and is clean.

**D** Reattach the top cover by fastening the two screws.

## SHUT DOWN AND STORAGE

During the off season, perform the following steps to shut down and store BCone:



**NOTE:** If the attachment cone is attached using the double sided tape or anchored using screws, it should remain in place and not be removed.

**F**

Store the Home Unit, Pool Unit, batteries, suction cup, screws and charging cable in a cool and dry place, preferably in the original box.

## TECHNICAL SPECIFICATIONS

BCone includes the following specifications:

- **BCone Home Unit model** – LBPABCHU01
- **BCone Pool Unit model**– LBPABCPU01
- **Alarm level of both the home and Pool Unit is 85 dB at 10 feet (complies with ASTM F-2208 standard)**
- **Minimum and maximum ambient temperature** – 32°F-113°F (0°C-45°C)
- **Temperature range for charging battery** – 32°F-113°F (0°C-45°C)
- **Home Unit operating voltage** –  
Input: DC5V 800mA  
Li-ion Battery 3.7V
- **Pool Unit batteries** – two 1.5 V AA Alkaline batteries
- **Home Unit battery** – 3.7V Li-ion battery



**CAUTION:** AA Alkaline batteries may explode or leak if recharged, inserted improperly or disposed of in fire. Do not open battery.



**CAUTION:** Only use and store Li-ion batteries at temperatures of between 32°F and 113°F (0°C-45°C). Keep away from heat and open flames – risk of explosion. Do not immerse in liquids. Do not open battery.

- **QR Code for mobile application download–**



## CONTACT INFORMATION

Manufacturer: Lifebuoy Ltd.

Website: [www.lifebuoyalarm.com](http://www.lifebuoyalarm.com)

Email: [info@lifebuoyalarm.com](mailto:info@lifebuoyalarm.com)

Toll free US & Canada only: 1800-720-7160

Made in Israel

## MULTI BCONE

This chapter reviews the the option of using more than one Pool Unit, and includes:

- **Multi BCone Installation Recommendations**
- **Adding a Pool Unit**
- **Multi BCone Operation**