

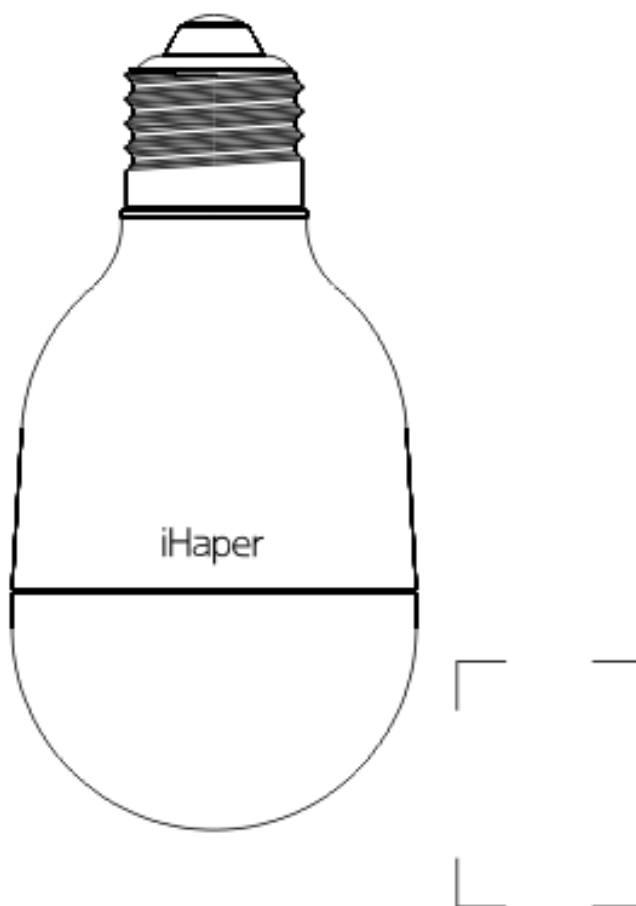
User Manual

Model:LB01U, LB02U, LB03U, LB04U

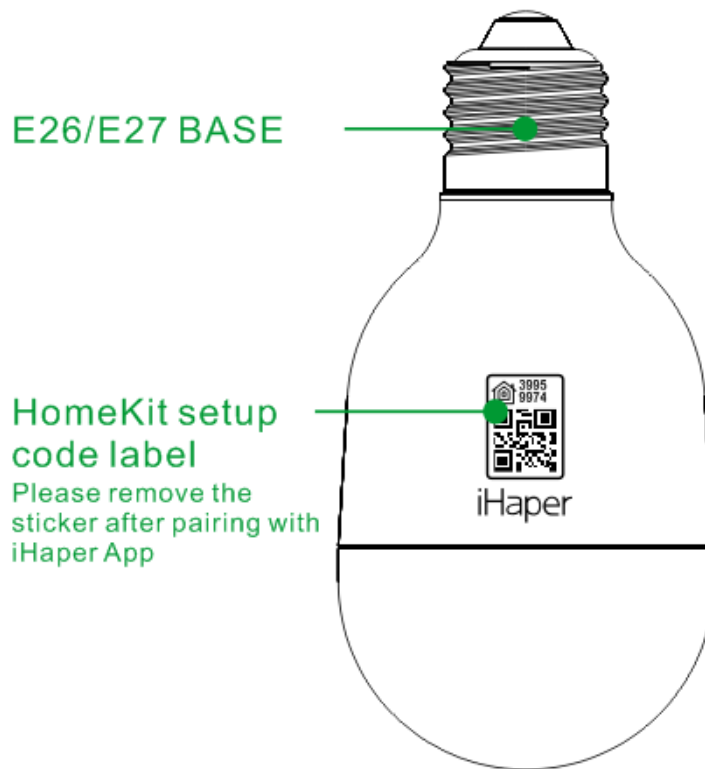
iHaper

User Manual

Light Bulb



Overview



Quick Start Guide

1. Power off the light before screwing the LED light bulb into the desired light socket.
2. Make sure your iPhone or iPad (iOS 10.0 or later) is connected to a 2.4GHz Wi-Fi network. (**This product does not support 5GHz Wi-Fi Networks.**)
3. Make sure you have at least 2 bars of Wi-Fi signal there.
4. Download the free iHaper app from the App store and log in.
5. Tap “+” and scan the QR code. Then follow the steps to add the device to the Home and Room. Please keep the QR code for future use.

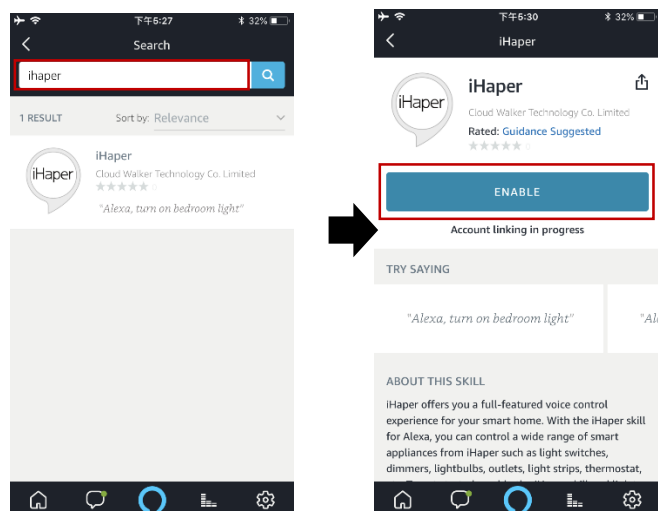
6. Name this product to help you identify it in the Home app and to control it with Siri. For example, you can name the product “Room Light”, then launch Siri and speak “Turn on the Room Light”.
7. Change the color and adjust the brightness by tapping and holding the bulb icon in the app for 2 seconds or just asking Siri, e.g., “Set room light to Green” or “Set room light to 50%”.
8. Create a scene which controls multiple accessories at the same time. Tap the scene to turn it on or off, or just ask Siri. For example, if you assign the “Good Night” command to the scene of turning off room light and turning on the living room light, when you speak “Good night” to Siri, everything is done.

For Android device :

Please download and open free iHaper app from Google play. Then tap “ + ” icon and follow the on-screen directions to complete network setup.

Enabling Alexa

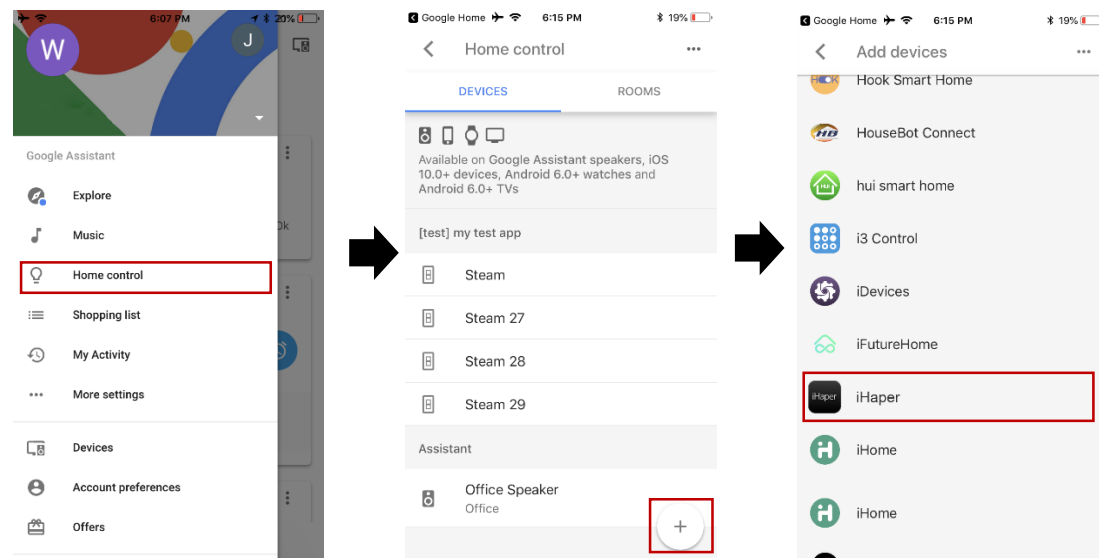
1. Create an account in iHaper App (username and password are case sensitive) and login to your account.
2. Go to iHaper App > long press device icon to enter the detail.
3. Enable Cloud registration.
4. Open Alexa App and enable iHaper Alexa skills using the same account info.



5. Discover light bulb in the Alexa App, and then follow the steps to complete setup.

Enabling Google Home

1. Open Google Home App and go to home control.
2. Tap “+” to select iHaper .
3. Enter iHaper account info and enable.



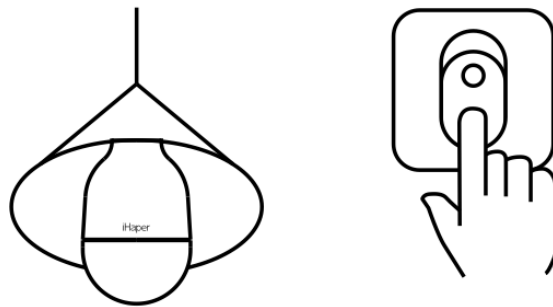
4. Discover light bulb in the Google App, and then follow the steps to complete setup.

Note

1. The use of a HomeKit - enabled accessory need the following permissions:
Setting > iCloud > iCloud Drive > Turn On
Setting > iCloud > Keychain > Turn On
Setting > Privacy > HomeKit > iHaper > Turn On
2. Controlling this HomeKit-enabled accessory automatically and away from home requires an Apple TV with tvOS 10.1 or later or an iPad with iOS 10.1 or later set up as a home hub.

Restore Factory Settings

Use your light switch to turn on and off the LED light bulb for 4 times in a row (please keep a time interval of 1~2 seconds when turning on or off the light) and make sure the light is ON for the last time. Wait for about 2 seconds and the light bulb will flash 3 times, indicating that you have restored the light bulb to factory settings.



Specification

Model: LB01U, LB02U, LB03U, LB04U

Input: 100-240V AC, 50/60Hz, 150mA (Max.)

Base type: E26 (US) / E27 (EU)

Rated power: 5W-7W

LED color range: 16 million colors with cool to warm white

RGB Color temperature: 455nm - 625nm

RGB Luminous flux: 40-80LM

White color temperature: 6000 - 6500K

White Luminous flux: 770 - 840lm

Operating temperature: 5 ° C ~ 45 ° C

Expected LED life: 22.8 years (25000 hours)

Wi-Fi: 802.11b/g/n, 2.4GHz ONLY

General indoor use

FAQ

Why did I fail to add my light bulb to the iHaper App?

1. Make sure your accessory is powered on and nearby.
2. If you use a dual 2.4/5G network router, please turn off the 5G network. Connect your phone with 2.4G network and add the device again.
3. Make sure that the router setting meets the relevant requirements. The device only support the mode of WPA/WPA2-PSK.
4. Make sure the light bulb is in pairing mode. If not, please reset light bulb to restore factory setting.
5. Select the accessory shown on screen, then scan the QR code which can be found on device, instruction manual or inner packaging.
6. If the app prompts "No Discovered Accessories" before you scanning the QR code:
 - 1) Close the app
 - 2) Reboot the phone
 - 3) Restore light bulb to factory settings
 - 4) Add the device again

The device works normally after restoring factory settings or switching on/off, but it occasionally gets disconnected from the network and can not be recognized.

1. Make sure the number of Wi-Fi connected devices is within the wireless network capacity of your router. Otherwise, please replace with another router.
2. Reconnect you iOS device to Wi-Fi and make sure your Wi-Fi signal is strong enough.
3. Wait until the network is fixed. If your router performs poorly in wireless networks that might result from network congestion.
4. Check the router setting and see if there is any limit to the number of simultaneous client connections.
5. Restart your HomeKit accessory or restore your HomeKit accessory to factory setting, and add your HomeKit accessory to the iHaper app.
6. Updated firmware to the latest version.

Safety Warning

Turn off power before inspection, installation and removal

For indoor use only

Keep children away from the light bulb

Remove LED Light Bulb from the light socket before cleaning

Avoid dropping

DO NOT touch when it working

DO NOT disassemble

DO NOT clean with liquid

DO NOT use abrasives or solvents

DO NOT use in wet or damp areas

DO NOT use in enclosed environments

DO NOT exceed the recommended electrical ratings

Legal

Use of the Works with Apple HomeKit logo means that an electronic accessory has been designed to connect specifically to iPod touch, iPhone, or iPad, respectively, and has been certified by the developer to meet Apple performance standards. Apple is not responsible for the operation of this device or its compliance with safety and regulatory standards.

Disclaimer

1. To protect your legal rights, please read the instructions provided in manual with this product carefully before using. By using this product, you agree that you have read, understood, approved and accepted the Terms and Conditions Agreement within this instruction manual.

2. When using this product, it is advised that you please, strictly follow the requirements within this instruction manual. iHaper assumes no responsibility for all accidents, property damage, personal injury, legal disputes, or all other adverse events that cause conflicts of interest due to violations of the required use.

FCC Compliance Notice

This device complies with Part 15 of the FCC Rules. Operation is subject to the following two conditions: (1) This device may not cause harmful interference, and (2) this device must accept any interference received, including interference that may cause undesired operation. NOTE 1: This equipment has been tested and found to comply with the limits for a Class B digital device, pursuant to part 15 of the FCC Rules. These limits are designed to provide reasonable protection against harmful interference in a residential installation. This equipment generates, uses and can radiate radio frequency energy and, if not installed and used in accordance with the instructions, may cause harmful interference to radio communications. However, there is no guarantee that interference will not occur in a particular installation. If this equipment does cause harmful interference to radio or television reception, which can be determined by turning the equipment off and on, the user is encouraged to try to correct the interference by one or more of the following measures:- Reorient or relocate the receiving antenna.- Increase the separation between the equipment and receiver.-Connect the equipment into an outlet on a circuit different from that to which the receiver is connected.-Consult the dealer or an experienced radio/TV technician for help. NOTE 2: Any changes or modifications to this unit not expressly approved by the party responsible for compliance could void the user's authority to operate the equipment.

This equipment complies with FCC radiation exposure limits set forth for an uncontrolled environment. This equipment should be installed and operated with minimum distance 20cm between the radiator & your body.