

# WIFI antenna passive test report

Prototype model: SX6BHET

Test person/date: Peng Haixiang 2022.3.2

Review /Date: Li He 2022.3.2

Approval /Date: Chen Shaohang 2022.3.2

# Shenzhen Feiyuxin Electronics Co., Ltd

## R&D Department

# directory

Chapter 1 Test Project... 3

1.1 Introduction to the test project... 3

1.2 Mockup real shot... . . . . . 3

Chapter 2 Main Test Equipment and Test Tools . . . . . 3

Chapter 3 Passive Test Data . 4-8

3.1 Test data... . . . . . 4-8

## Chapter 1 Test Project

### 1.1 Introduction to the test project

1	Passive testing

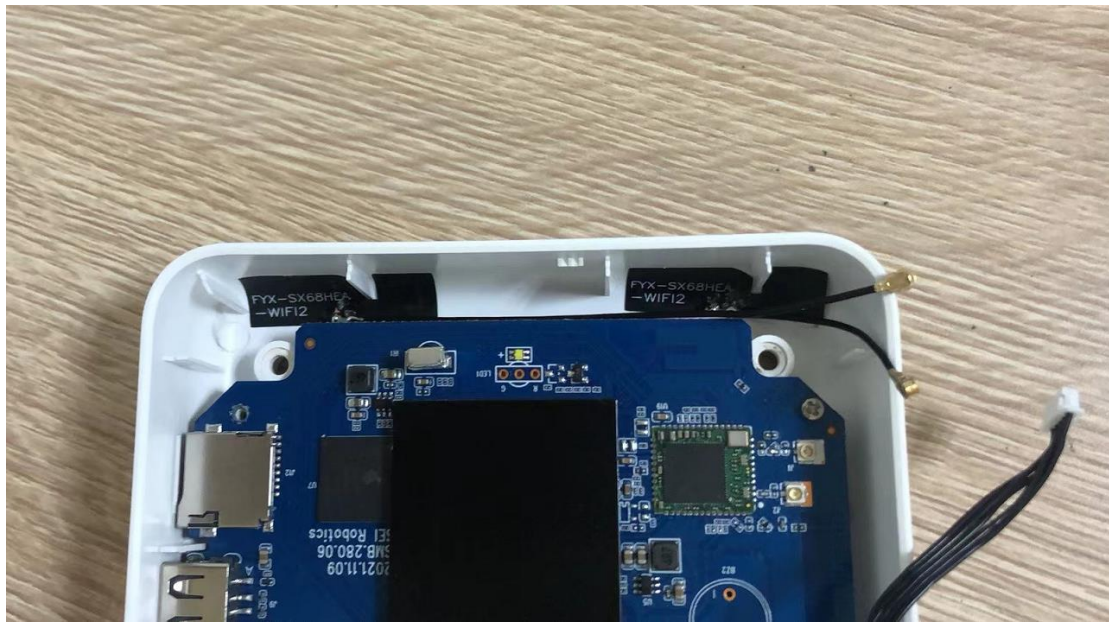
### 1.2 Mockup real shot



## Chapter II Main Test Equipment and Test Tools

1	Comprehensive Tester (8753E).
2	3D microwave anechoic chamber (5X4X3M).
5	Desktop computers
6	display
8	
9	
10	

Schematic diagram of antenna location



A antenna: dual-band WIFI antenna L=100mm VSWR



B antenna: dual-band WIFI antenna L=50mm VSWR

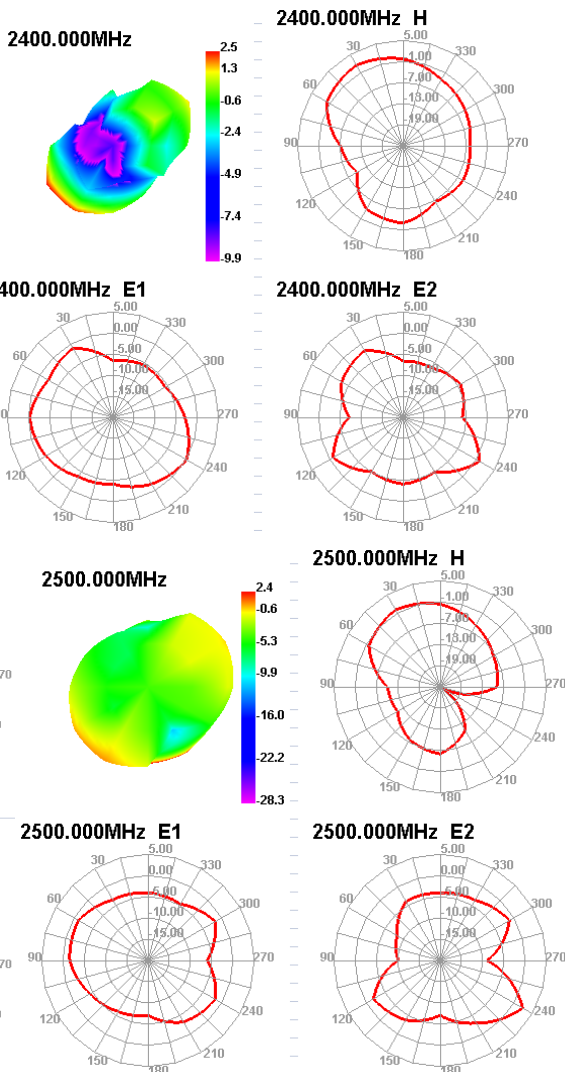


Frequency Mhz	A antenna	B antenna
2400	1.92	1.45
2500	1.45	1.64
5150	1.45	1.38
5850	1.91	1.52

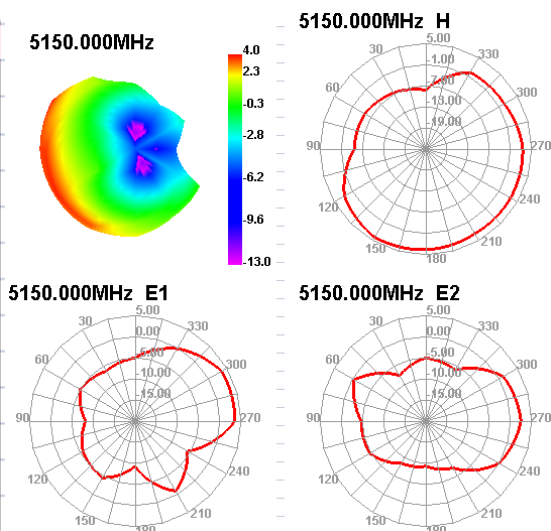
### 第三章 Passive OTA test data

#### A antenna: dual-band WIFI antenna L=100mm

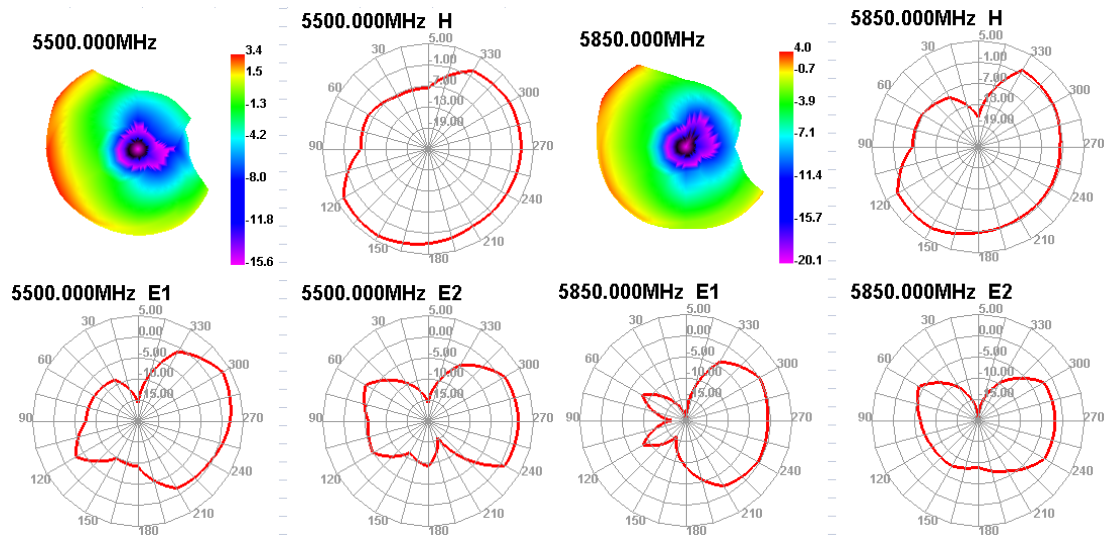
Passive Test For 2400-2500		
Freq (MHz)	Effi (%)	Gain (dBi)
2400	57.32	2.53
2410	53.7	2.24
2420	50.42	2.07
2430	51.32	2.14
2440	54.83	2.41
2450	59.36	2.75
2460	60.16	2.75
2470	54.08	2.42
2480	57.69	2.73
2490	53.39	2.48
2500	52.23	2.44



Passive Test For 5.8g		
Freq (MHz)	Effi (%)	Gain (dBi)
5150	62.11	3.96
5220	67.87	3.37
5290	63.06	3.91
5360	62.53	3.99
5430	59.78	5.64
5500	57.12	3.41
5570	58.17	3.43
5640	57.84	2.43
5710	60.17	2.9
5780	59.05	3.1
5850	59.64	4.04

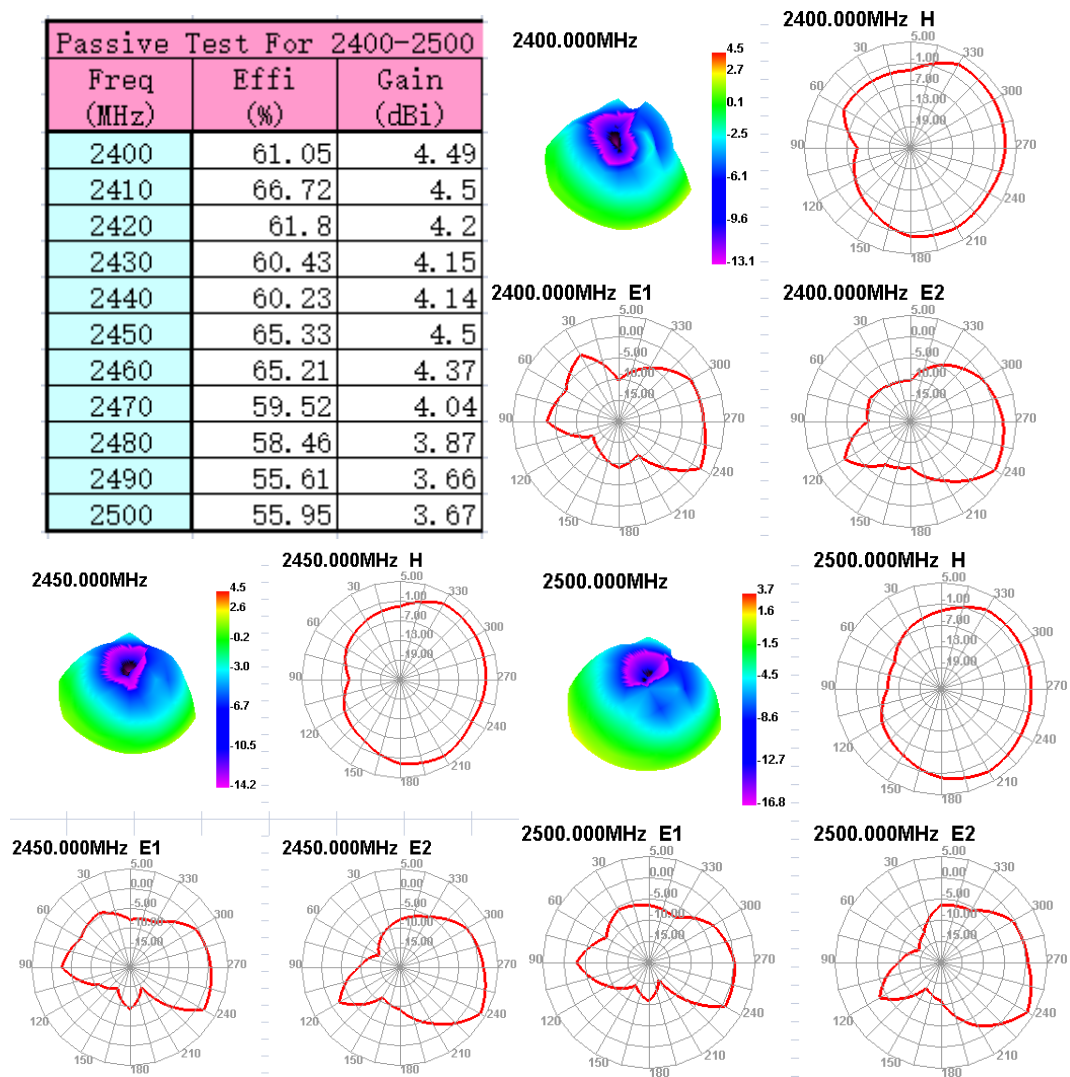




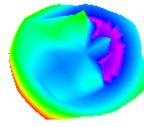
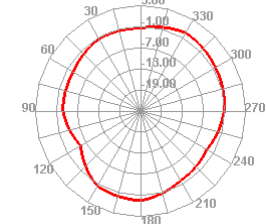
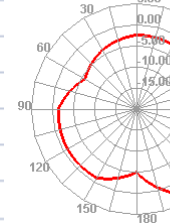
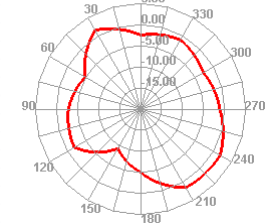
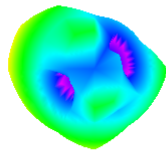
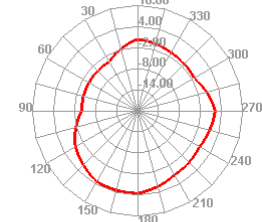
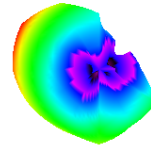
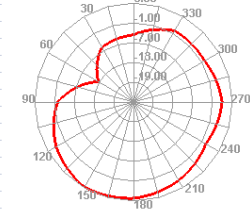
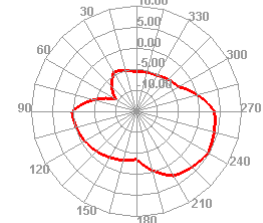
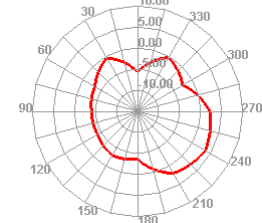
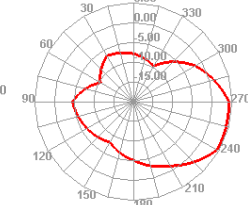


### B antenna: dual-band WIFI antenna L=50mm

Passive Test For 2400-2500		
Freq (MHz)	Effi (%)	Gain (dBi)
2400	61.05	4.49
2410	66.72	4.5
2420	61.8	4.2
2430	60.43	4.15
2440	60.23	4.14
2450	65.33	4.5
2460	65.21	4.37
2470	59.52	4.04
2480	58.46	3.87
2490	55.61	3.66
2500	55.95	3.67



Passive Test For 5.8g		
Freq (MHz)	Effi (%)	Gain (dBi)
5150	59.68	4.85
5220	65.56	3.62
5290	58.5	4.49
5360	63.58	4.62
5430	62.18	5.55
5500	65.11	5.51
5570	59.54	5.75
5640	57.02	5.53
5710	63.3	4.9
5780	59.57	4.19
5850	65.15	4.79

**5150.000MHz**

**5150.000MHz H**

**5150.000MHz E1**

**5150.000MHz E2**

**5500.000MHz**

**5500.000MHz H**

**5850.000MHz**

**5850.000MHz H**

**5500.000MHz E1**

**5500.000MHz E2**

**5850.000MHz E1**

**5850.000MHz E2**
