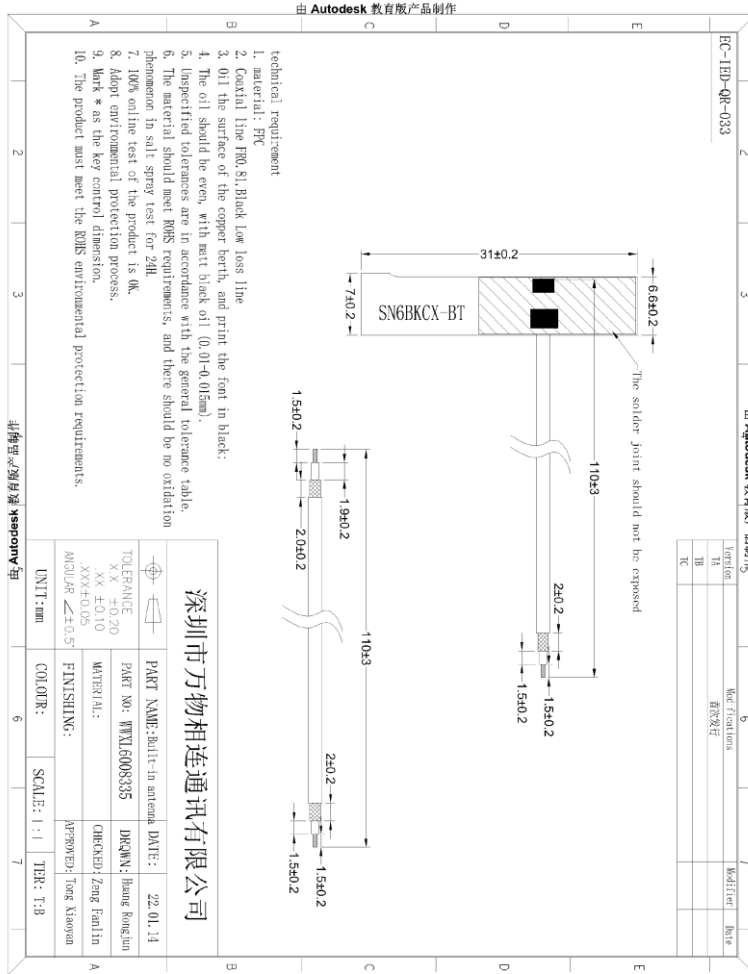
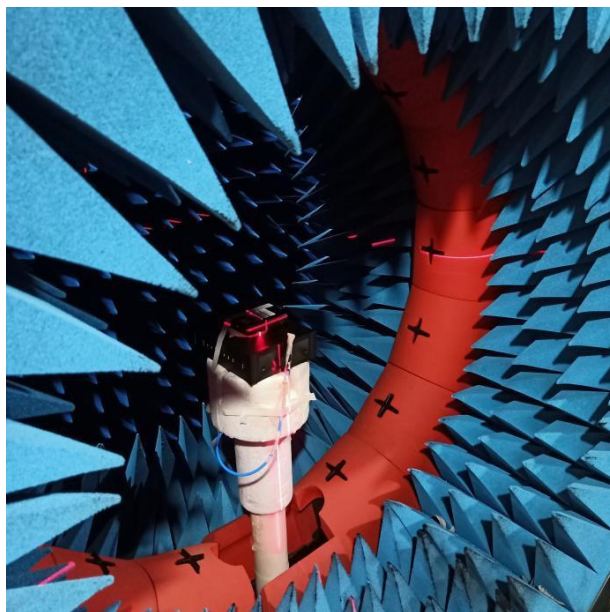


# BT Antenna Report

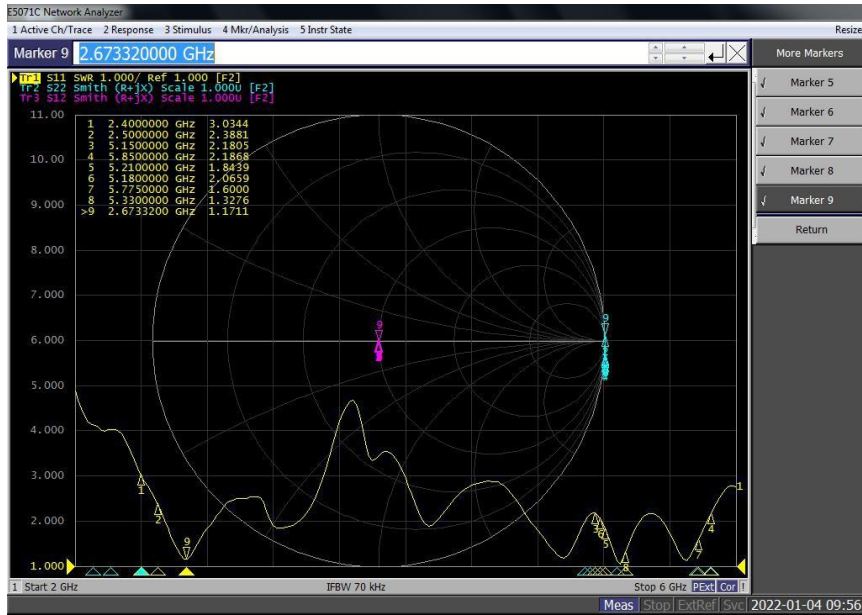


Shenzhen all things connected Communication Co.,Ltd.  
 All things connected Communications Xiangyang Limited  
 Add: Room 1101,Building 4,Fangdacheng,No2,Longxhu 4th Road,  
 Add: Hubei Xiangyang Gucheng County northwest renewable resources trading center Taoyuan Street, Nanshan District, Shenzhen City  
 phone: 136 6268 4409 URL: [www.wxltx.cn](http://www.wxltx.cn)



Test Environment Environment

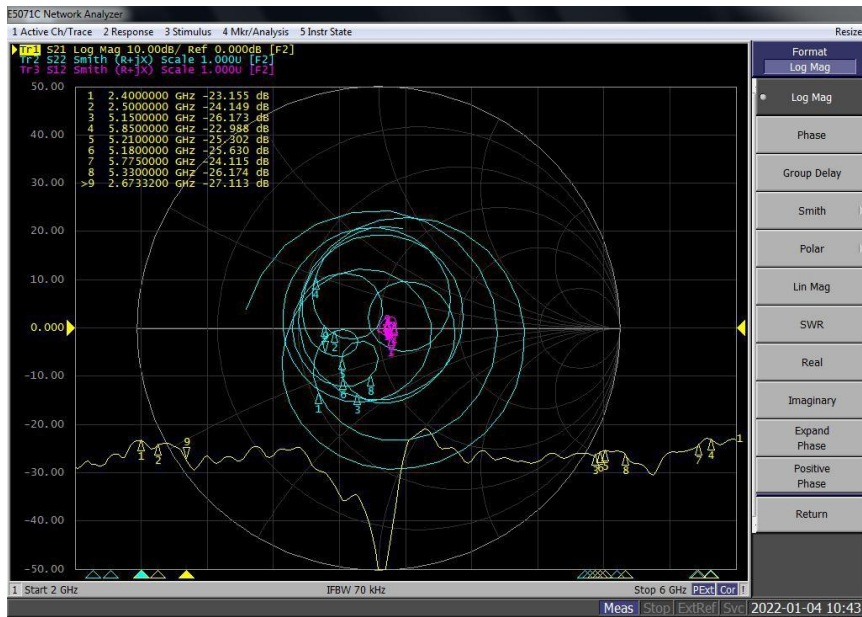
### BT antenna standing wave ratio diagram



### BT antenna standing wave ratio value

Frequency (MHZ).	2400	2500	5150	5180	5210	5330	5775	5825	5850
Standing	3.0	2.3	/	/	/	/	/	/	/

### Diagram of BT antenna isolation from nearest WIFI antenna



### Antenna isolation value.

Frequency (MHZ).	2400	2500	5150	5180	5210	5330	5775	5825	5850
Isolation (DBI).	-23.1	-24.1	-26.1	-25.6	-25.3	-26.1	-24.1	-22.7	-22.9

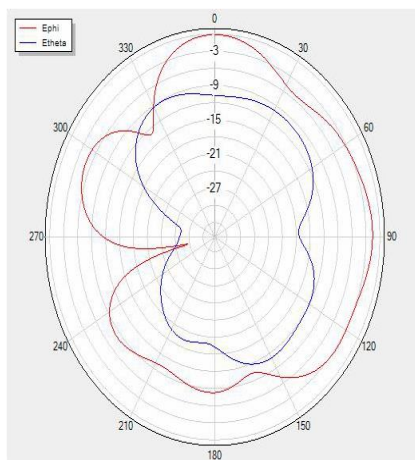
Third, antenna gain and antenna efficiency

BT antenna

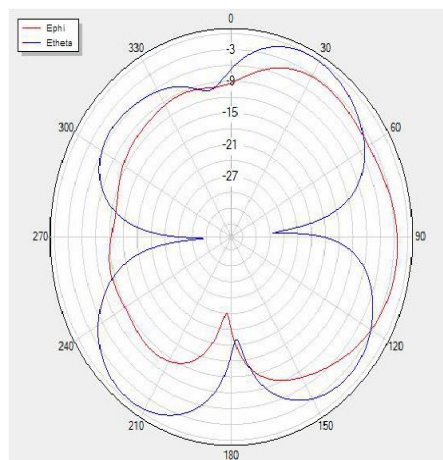
Gain&Efficiency						
Gain and efficiency						
frequency	gain	mingain	CP Gain	CO Gain	efficiency	efficiency
Frequency	Gain (dBi).	Minimum (dBi)	Cross-Maximum (dBi)	The main Big gain (dBi)	Efficiency	Efficiency
2400	-2.81	-31.62	-6.33	-3.05	-9.01	12.55
2410	-2.36	-35.37	-5.84	-2.6	-8.56	13.95
2420	-2.11	-33.27	-5.55	-2.37	-8.16	15.26
2430	-2.69	-30.07	-5.85	-2.93	-8.56	13.94
2440	-1.51	-24.67	-4.31	-1.78	-7.27	18.76
2450	-2.31	-23.36	-5.07	-2.99	-8.09	15.53
2460	-1.56	-21.29	-3.95	-2.28	-7.16	19.25
2470	-1.33	-20.91	-3.62	-2.12	-6.93	20.27
2480	-1.64	-21.07	-3.84	-2.47	-7.27	18.77
2490	-1.02	-20.65	-3.48	-1.85	-6.73	21.21
2500	-1.88	-21.53	-3.88	-2.71	-7.24	18.88

the antenna pattern

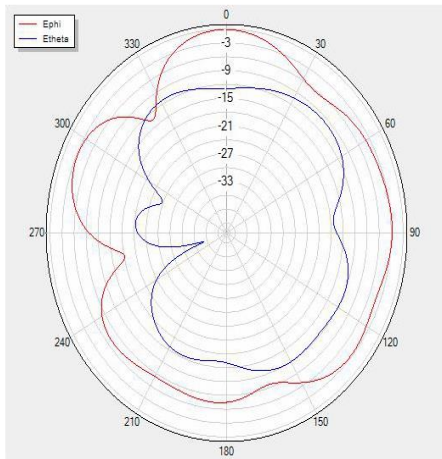
H Theta=90 freq=2400MHz



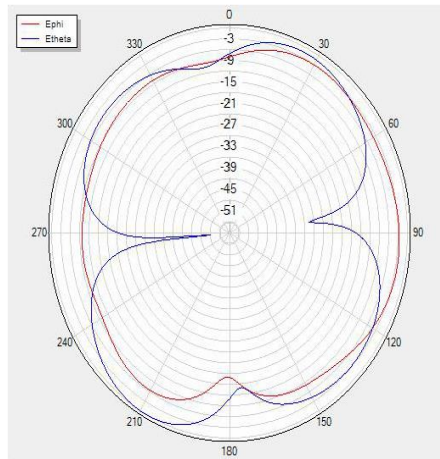
V Phi=90 freq=2400MHz



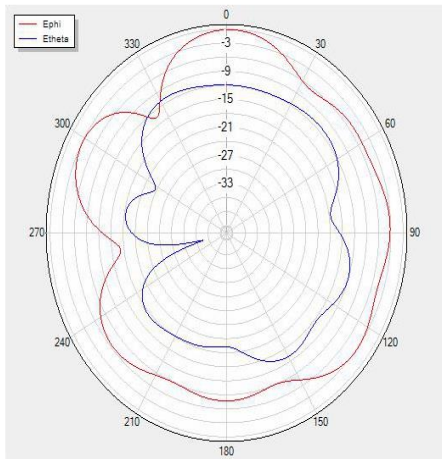
**H Theta=90 freq=2450MHz**



**V Phi=90 freq=2450MHz**



**H Theta=90 freq=2500MHz**



**V Phi=90 freq=2500MHz**

