

First unzip the files, then install the relative drivers, or download them based on the links below. WIN7 WIN8 WIN10 operating system will automatically install the relevant network card program. If the system is not installed automatically, then the relevant driver is installed manually.

Wireless network card setting introduction

Hardware setting:

Using network card
insert into the computer
USB interface

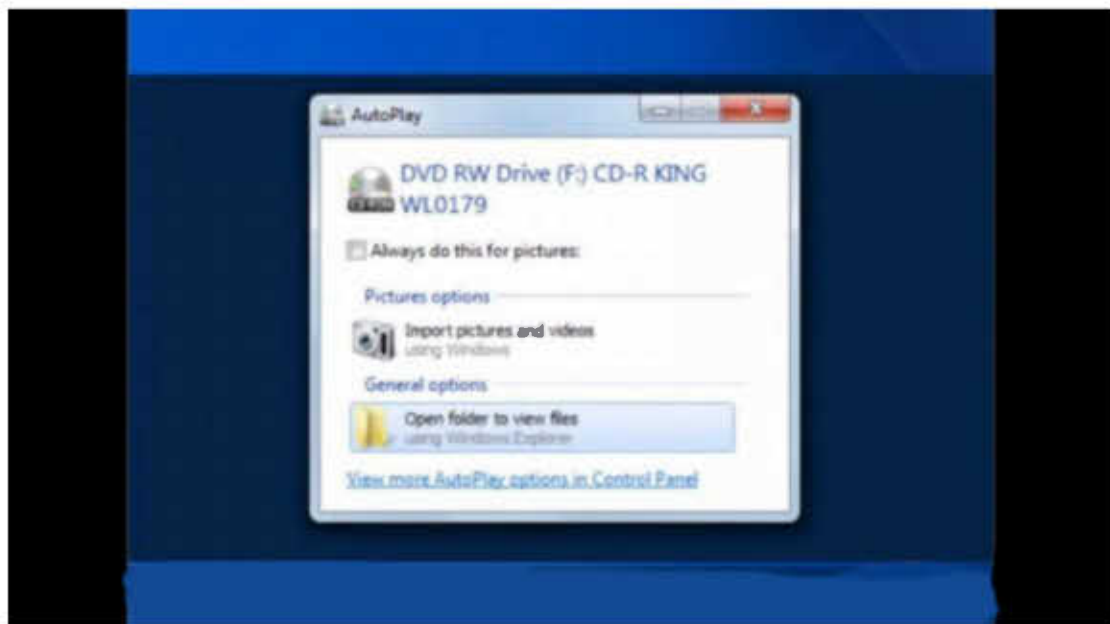


Software setting :

Setting software in the windows 7 the same as in the vista, for example, the windows XP:

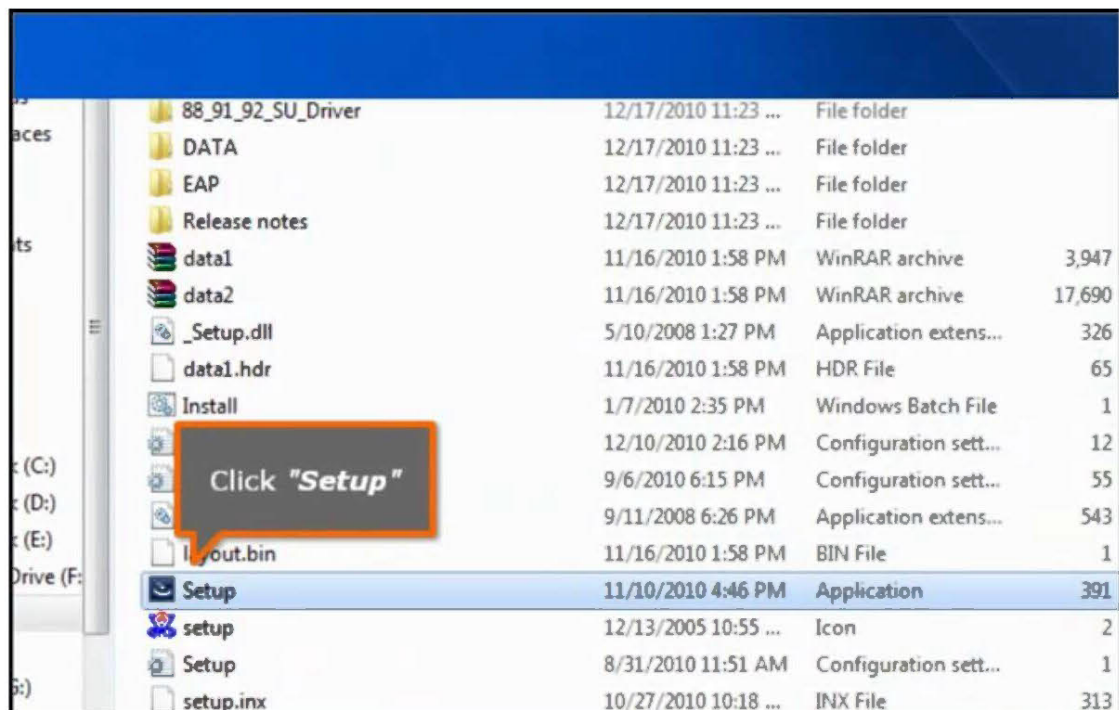
2.1 After network card connect with computer, it will show a window about “hardware setting guiding” ,please click the cancel button.

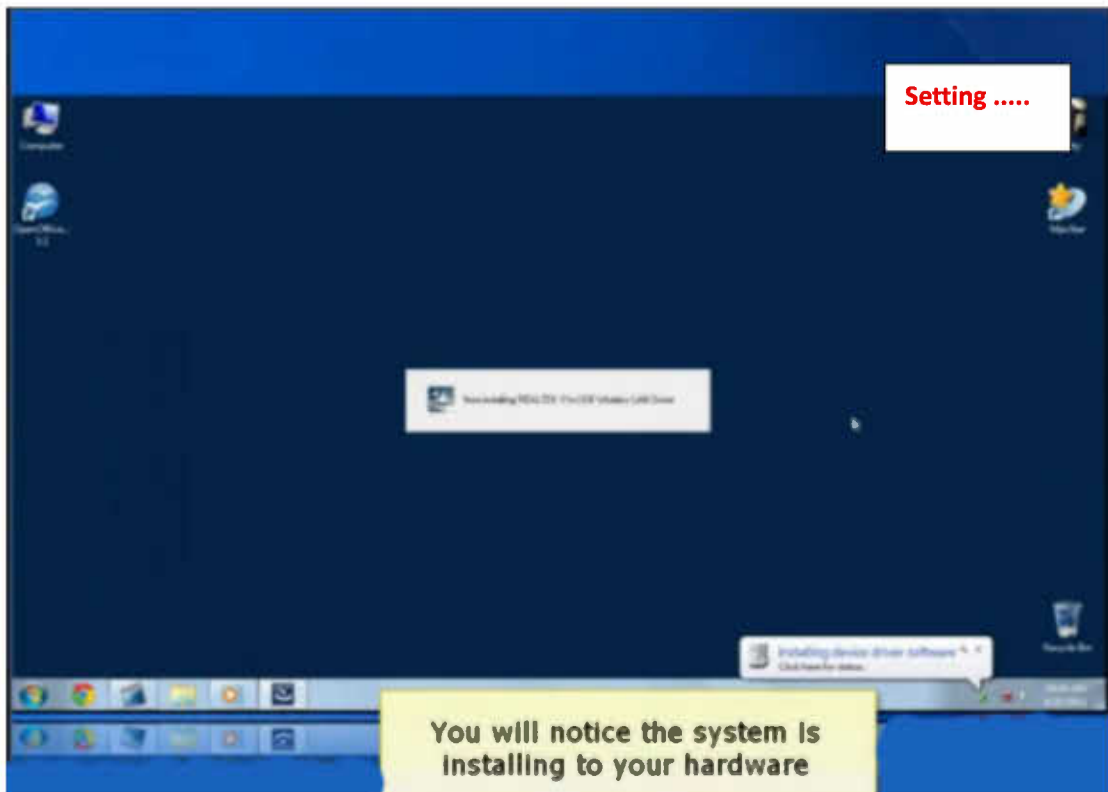
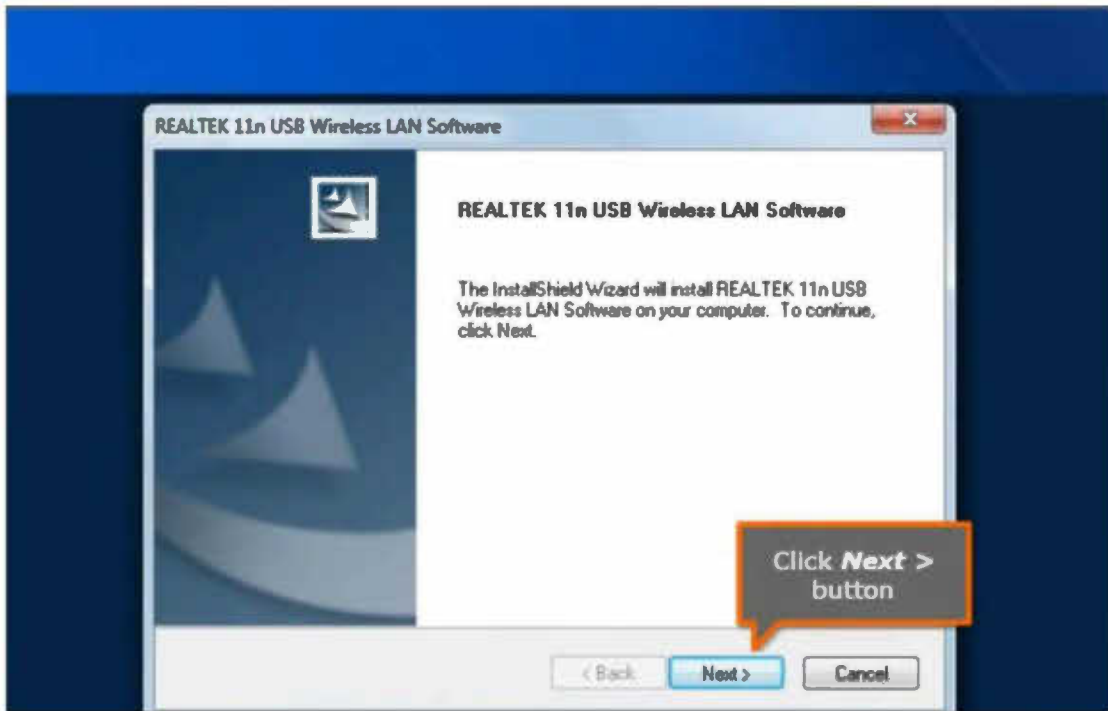
2.2 Take the CD drive insert into computer and open the CD file

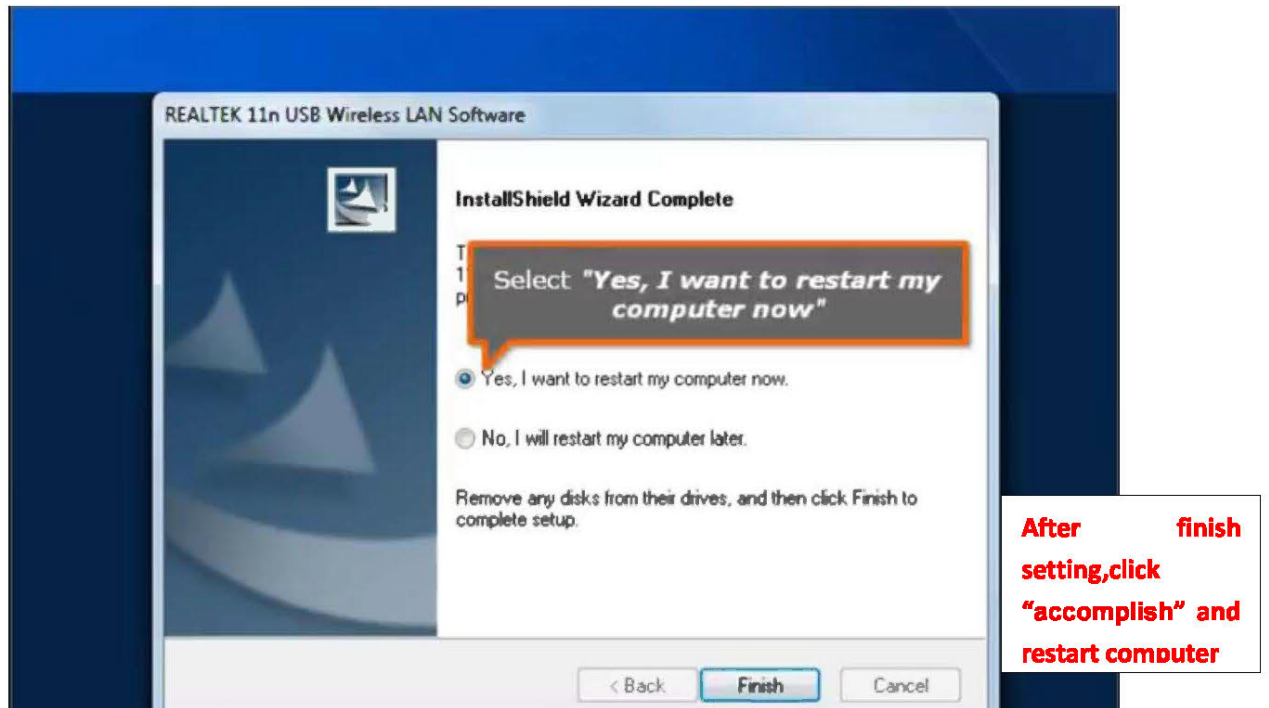




2.3 Open windows Driver folder, double click Setup setting program

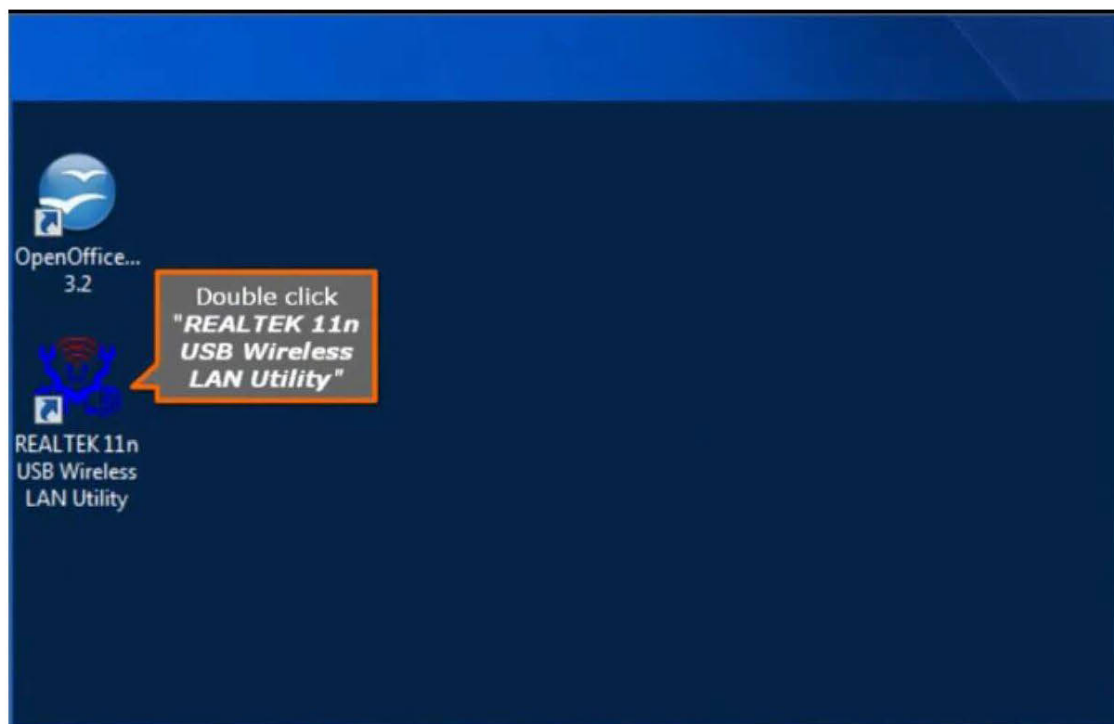


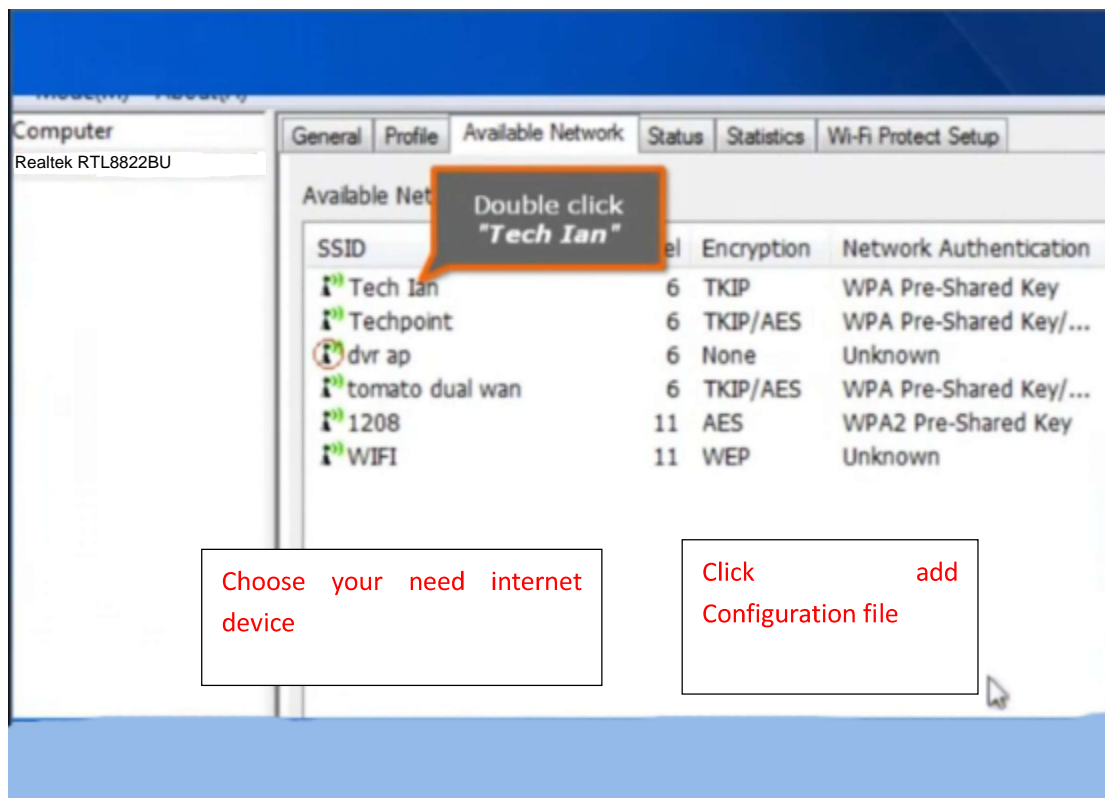




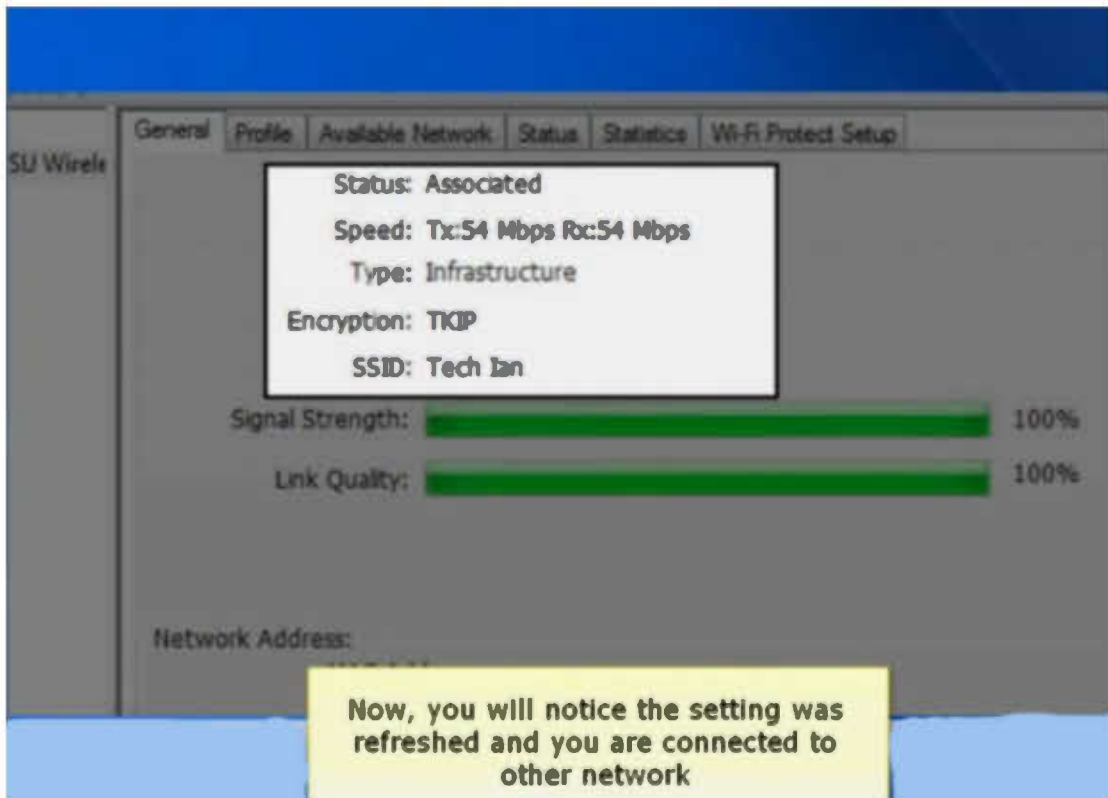
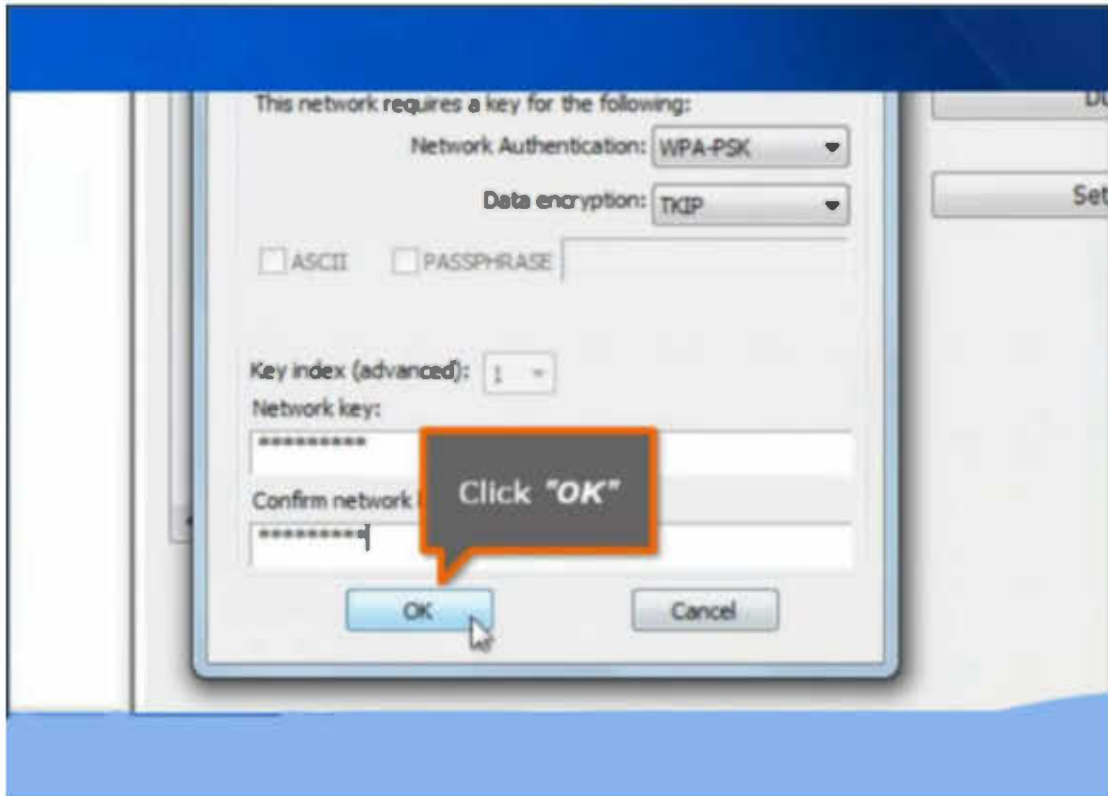
3. Take the network card connect with the wireless internet

3.1 Double click the table program icon :





Scan wireless password (if you don't write, you can click sure button)



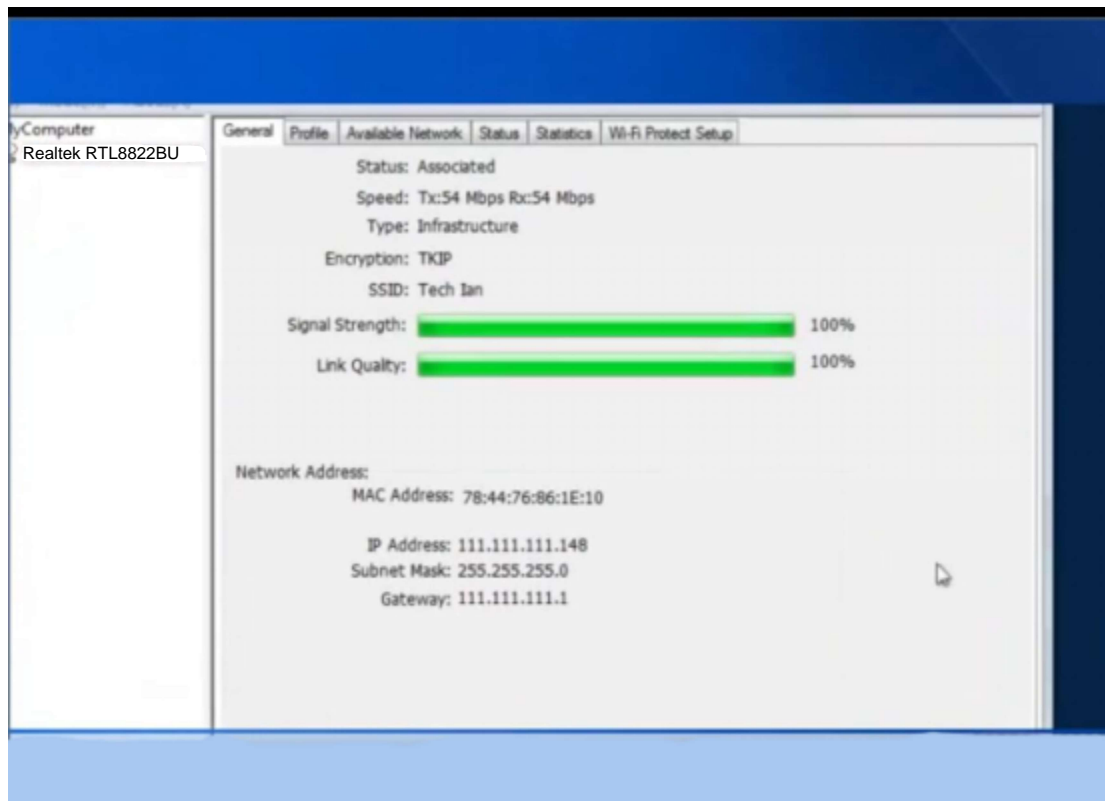
If learning under this, you can take the network card connect into wireless internet

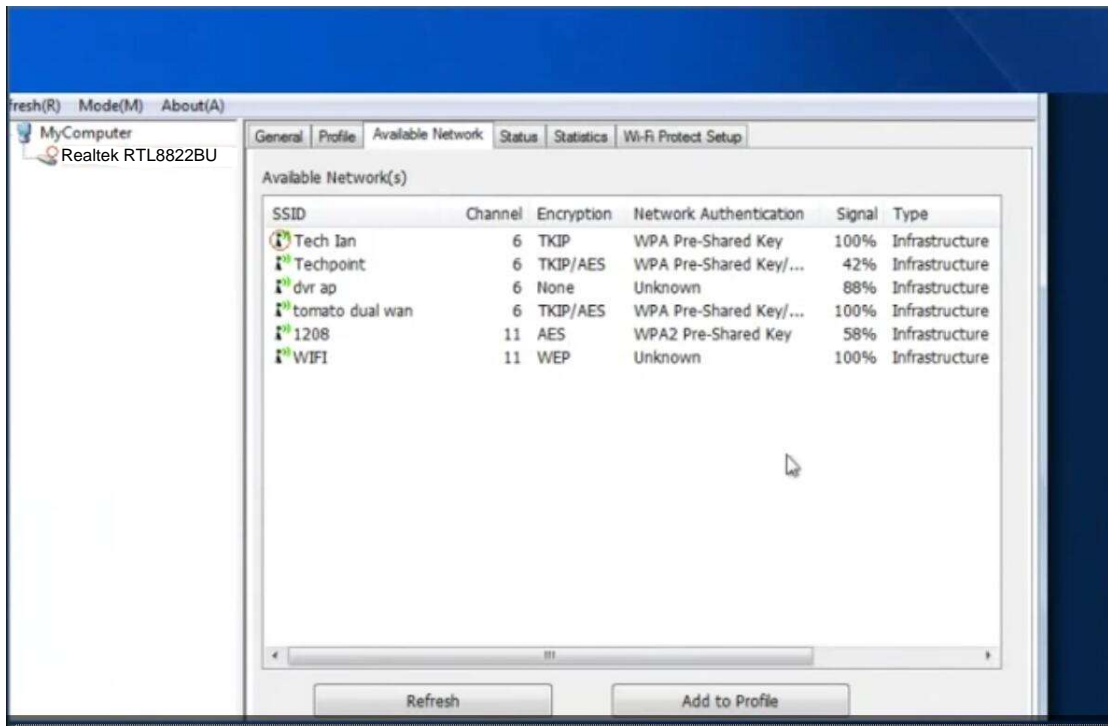
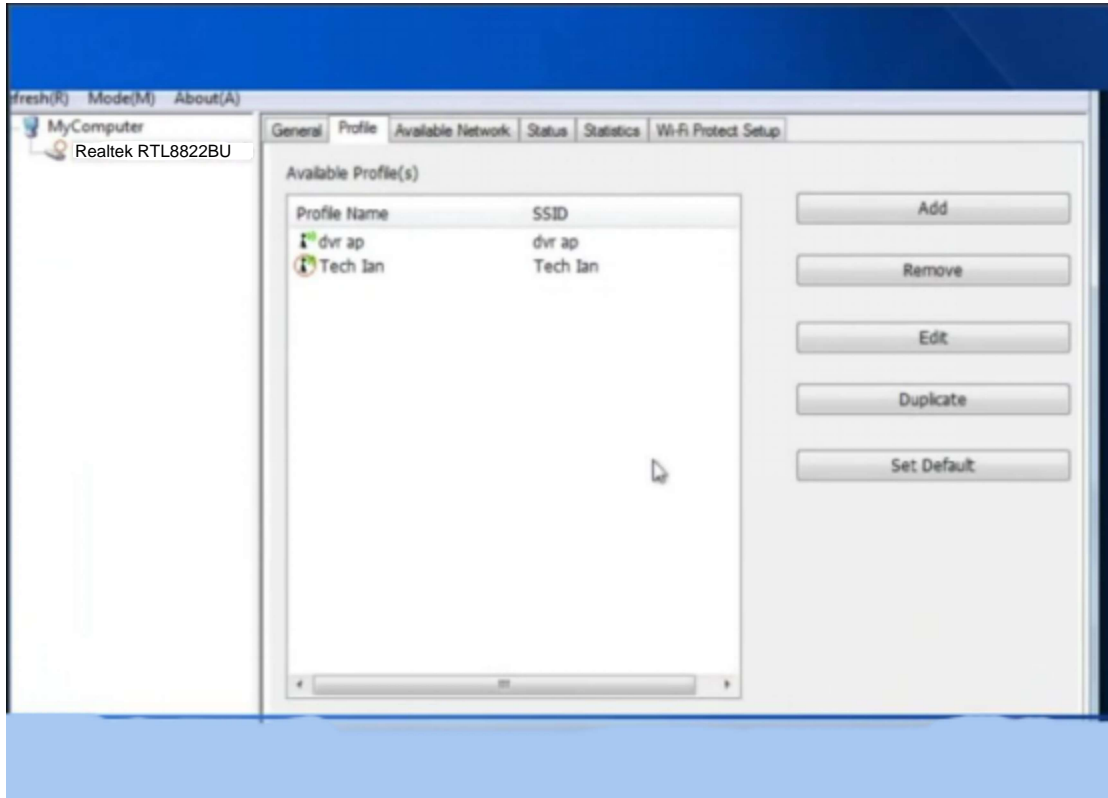
4. Let the wireless network card set up AP :

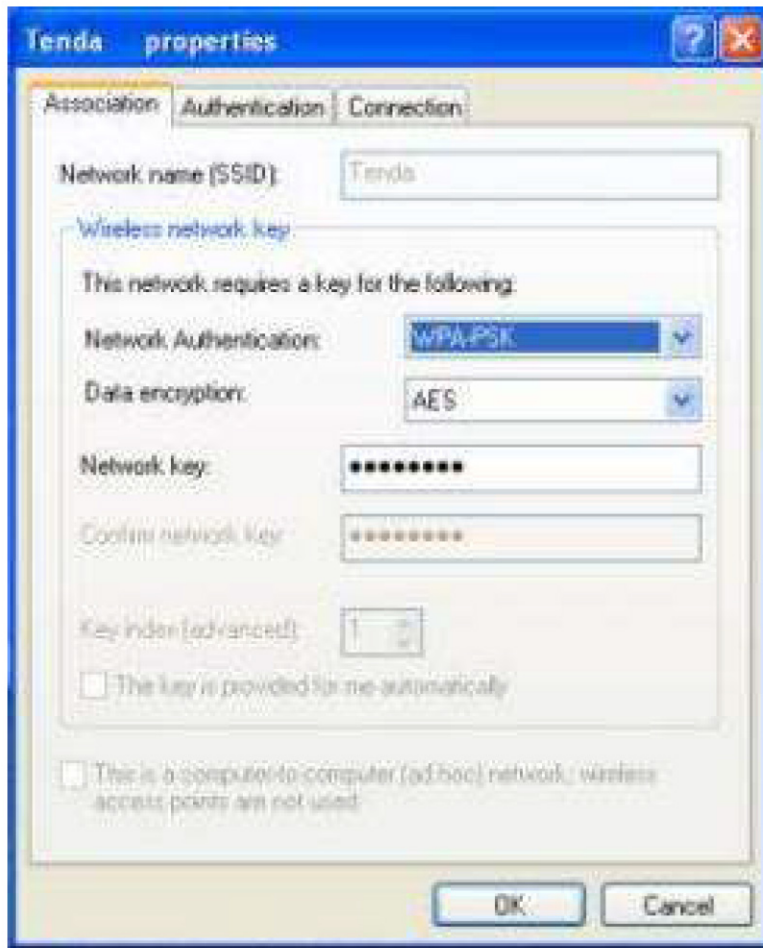
Attention: 1. it must close computer Firewall and other protect program first and take “AP” mode.

2. The computer must have normal wired internet connection.

4.1 As the pictures:



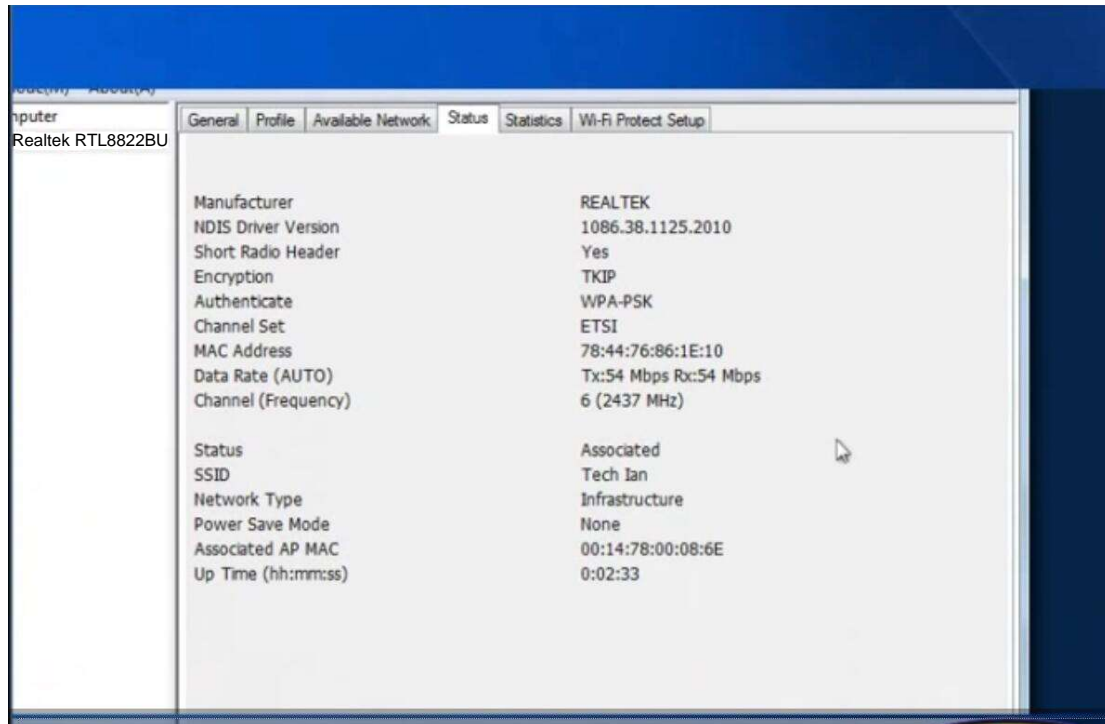




AP name can change anytime

AP work channel can switch

Encryption the way set up



As under steps you can accomplish AP mode setting up .

FCC Statement:

This equipment has been tested and found to comply with the limits for a Class B digital device, pursuant to part 15 of the FCC Rules. These limits are designed to provide reasonable protection against harmful interference in a residential installation. This equipment generates, uses and can radiate radio frequency energy and, if not installed and used in accordance with the instructions, may cause harmful interference to radio communications. However, there is no guarantee that interference will not occur in a particular installation. If this equipment does cause harmful interference to radio or television reception, which can be determined by turning the equipment off and on, the user is encouraged to try to correct the interference by one or more of the following measures:

- Reorient or relocate the receiving antenna.
- Increase the separation between the equipment and receiver.
- Connect the equipment into an outlet on a circuit different from that to which the receiver is connected.
- Consult the dealer or an experienced radio/TV technician for help.

Caution: Any changes or modifications to this device not explicitly approved by manufacturer could void your authority to operate this equipment.

This device complies with part 15 of the FCC Rules. Operation is subject to the following two conditions: (1) This device may not cause harmful interference, and (2) this device must accept any interference received, including interference that may cause undesired operation.