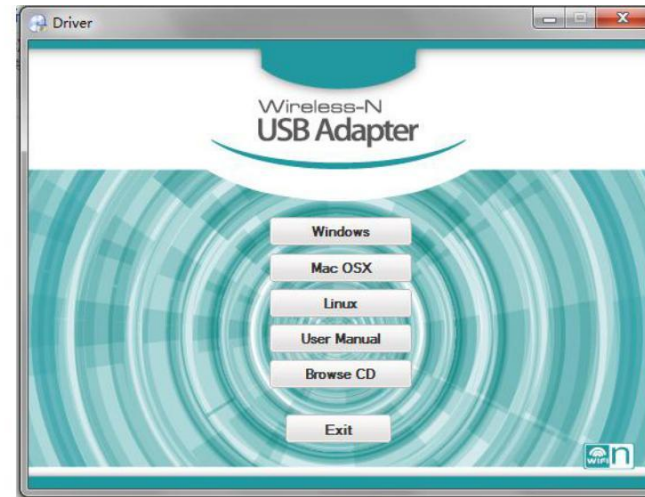
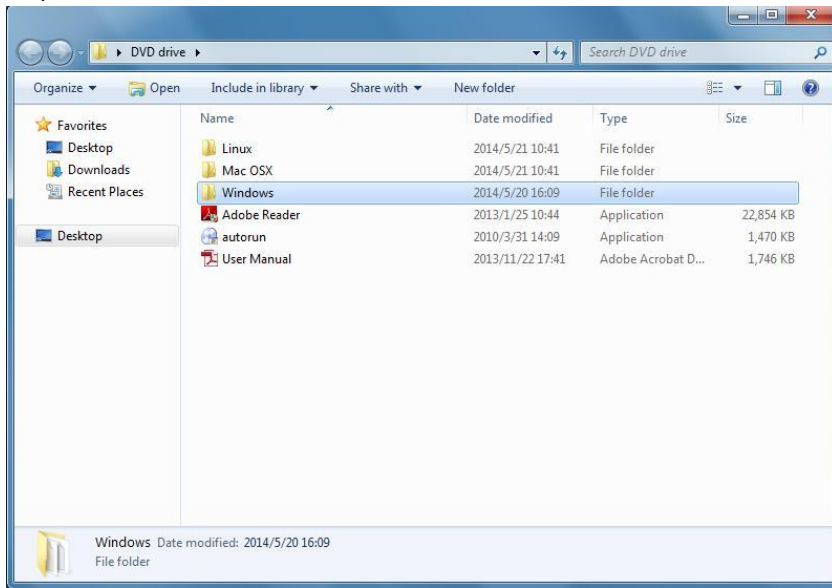


Mini Wireless USB Adapter 300Mbps

Plug the wireless usb adapter in your computer's USB, and install the driver as below.

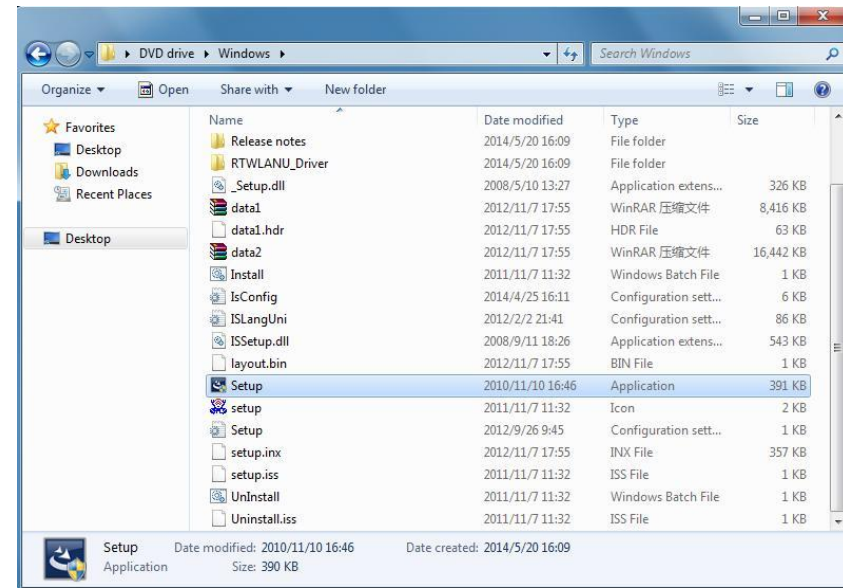


1. Insert CD in your computer's CD drive, double click "D" DRIVE OR you can open the "D" drive and



1. SELECT PROPER FILE FOR YOUR SYSTEM "Windows/Mac/Linux"

2. Select YOUR SYSTEM "Win/Mac/Linux", follow the direction to finish the installation.

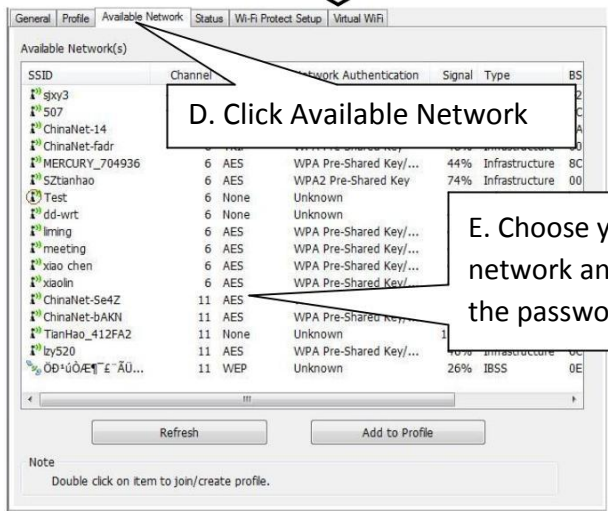
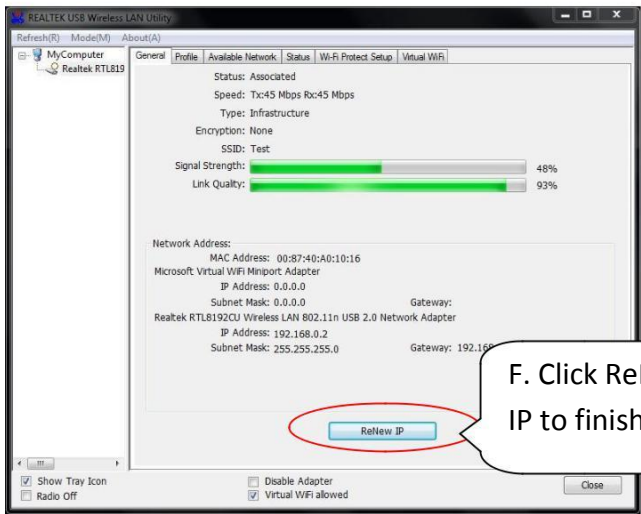
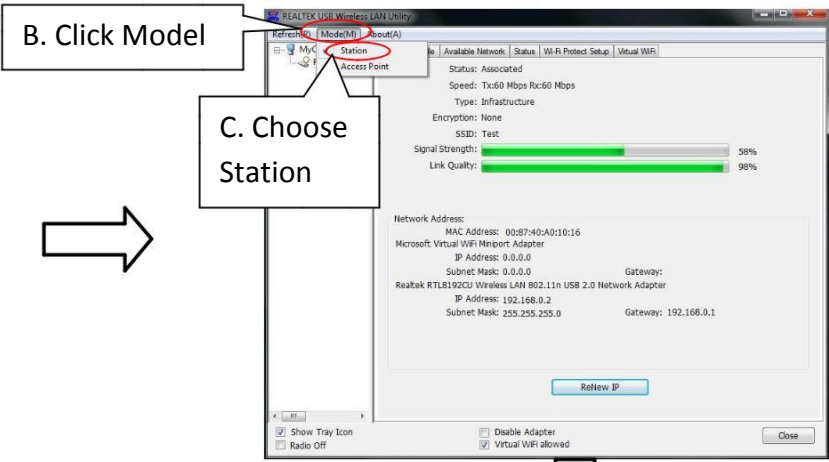


2. Double left-click on the setup.exe file and follow the direction to finish the installation.

Connect to the Internet:



A. Double Click and running



NOTE: This equipment has been tested and found to comply with the limits for a Class B digital device, pursuant to part 15 of the FCC Rules. These limits are designed to provide reasonable protection against harmful interference in a residential installation. This equipment generates uses and can radiate radio frequency energy and, if not installed and used in accordance with the instructions, may cause harmful interference to radio communications. However, there is no guarantee that interference will not occur in a particular installation. If this equipment does cause harmful interference to radio or television reception, which can be determined by turning the equipment off and on, the user is encouraged to try to correct the interference by one or more of the following measures:

- Reorient or relocate the receiving antenna.
- Increase the separation between the equipment and receiver.
- Connect the equipment into an outlet on a circuit different from that to which the receiver is connected.
- Consult the dealer or an experienced radio/TV technician for help

Changes or modifications not expressly approved by the party responsible for compliance could void the user's authority to operate the equipment.

This device complies with Part 15 of the FCC Rules. Operation is subject to the following two conditions:

- (1) this device may not cause harmful interference, and
- (2) this device must accept any interference received, including interference that may cause undesired operation.

This device is acting as slave and operating in the 2.4 GHz (2412 ~2462 MHz) band.

Ad Hoc function is supported but not able to operate on non-US frequencies.