



FCC 47 CFR PART 15 SUBPART C

TEST REPORT

FOR

CONTROLLAR

Model : I8, I8P
Trade Name: Luxtude

Issued to

Dongguan Lantun Energy Limited
RM 905/907/909, 9th Floor, FengShuo Square, Yuanmei
Road, Nancheng District, Dongguan City, Guangdong, PRC
(523000)

Issued by

WH Technology Corp.



EMC Test Site	Xizhi Office and Lab	7F., No.262, Sec. 3, Datong Rd., Xizhi Dist., New Taipei City 221, Taiwan (R.O.C.)
Test Firm Registration: 749714		

Note: This test refers exclusively to the test presented test model and sample. This report shall not be reproduced except in full, without the written approval of WH Technology Corp. This document may be altered or revised by WH Technology Corp. Personnel only, and shall be noted in the revision section of the document.



TABLE OF CONTENTS	2
TABLE OF CONTENTS	2
APPENDIX 1 PHOTOS OF TEST CONFIGURATION	3
APPENDIX 2 PHOTOS OF EUT	3
1. GENERAL INFORMATION	4
2. REPORT OF MEASUREMENTS AND EXAMINATIONS	5
2.1 LIST OF MEASUREMENTS AND EXAMINATIONS	5
2.2 DESCRIPTION OF THE TESTED SAMPLES	6
3. TEST METHODOLOGY	7
3.1 GENERAL TEST PROCEDURES	7
3.2 FCC PART 15.205 RESTRICTED BANDS OF OPERATIONS	8
3.3 DESCRIPTION OF TEST MODES	8
3.4 DESCRIPTION OF THE SUPPORT EQUIPMENTS	9
4. TEST AND MEASUREMENT EQUIPMENT	11
4.1 CALIBRATION	11
4.2 EQUIPMENT	11
5. SECTION 15.205 REQUIREMENTS (BAND EDGE)	13
5.1 TEST SETUP	13
5.2 LIMIT	13
5.3 RESULT: PASSED	14
5.4 TEST DATA:	14
6. SECTION 15.209 AND 15.249 REQUIREMENTS	16
6.1 TEST SETUP	16
6.2 LIMIT	17
6.3 TEST PROCEDURE	18
6.4 RESULT: PASSED	19
6.5 TEST DATA:	19
7. SECTION 15.207 REQUIREMENTS (POWERLINE CONDUCTED EMISSIONS)	28
7.1 TEST SETUP	28
7.2 LIMIT	28
7.3 TEST PROCEDURE	28
7.4 TEST SPECIFICATION	29
7.5 RESULT: PASSED	29
7.6 TEST DATA:	30
8. 20DB BANDWIDTH MEASUREMENT	32
8.1 TEST SETUP	32
8.2 LIMIT	32
8.3 TEST PROCEDURE	32
8.4 RESULT: PASSED	32



8.5 TEST DATA.....	33
APPENDIX 1 PHOTOS OF TEST CONFIGURATION.....	35
APPENDIX 1 PHOTOS OF TEST CONFIGURATION	
APPENDIX 2 PHOTOS OF EUT	



1. GENERAL INFORMATION

Applicant : Dongguan Lantun Energy Limited
Address : RM 905/907/909, 9th Floor, FengShuo Square, Yuanmei Road, Nancheng District, Dongguan City, Guangdong, PRC (523000)
Manufacturer : Dongguan Tecyea Electronics Limited
Address : No.2 Jingsheng Road, Waijing Industrial Park, Dongcheng, Dongguan City, Guangdong Province ,P.R.China
EUT : Controllar
Model Name : I8, I8P
Model Differences : All the same except model name

Is here with confirmed to comply with the requirements set out in the FCC Rules and Regulations Part 15 Subpart C and the measurement procedures were according to ANSI C63.10-2013. The said equipment in the configuration described in this report shows the maximum emission levels emanating

FCC part 15 subpart C

Receipt Date : 06/08/2018

Final Test Date : 06/25/2018

Tested By:

Reviewed by:

Jun 27, 20178
Date

Bing Chang/ Engineer

Jun 27, 2018
Date

Bell Wei / Manager

Designation Number: TW2954



2. REPORT OF MEASUREMENTS AND EXAMINATIONS

2.1 LIST OF MEASUREMENTS AND EXAMINATIONS

FCC Rule	Description of Test	Result
15.207	. Conducted Emission	Pass
15.205 15.209 15.249	. Radiated Emission	Pass
15.215(c)	. 20dB Bandwidth	Pass
1.1307 1.1310 2.1091 2.1093	. RF Exposure Compliance	Pass



2.2 DESCRIPTION OF THE TESTED SAMPLES

EUT Name : Controllar

Model Number :: I8

FCCID Number : 2AOUV-I8

Receipt Date : 12/08/2017

Input Voltage : 3.7Vdc From Li-ion Battery or 5Vdc From USB Port

Power From : Inside Outside
Adaptor BATTERY AC Power Source
DC Power Source Support Unit PC or NB

Operate Frequency : Refer to the channel list as described below

Modulation Technique : GFSK

Number of Channels : 3

Channel spacing : N/A 35 MHz

Operating Mode : Simplex Half Duplex

Antenna Type : PCB antenna
a dedicated antenna

Antenna gain : 0 dBi



3. TEST METHODOLOGY

All testing as described bellowed were performed in accordance with ANSI C63.10 and FCC CFR 47 Part 15 Subpart C.

3.1 GENERAL TEST PROCEDURES

Conducted Emissions

The EUT is placed on a wood table, which is at 0.8 m above ground plane acceding to clause 15.207 and requirements of ANSI C63.10. Conducted emissions from the EUT measured in the frequency range between 0.15 MHz and 30MHz are using CISPR Quasi-Peak / Average detectors.

Radiated Emissions

The EUT is a placed on a turn table, which is 0.8 m and 1.5m above ground plane. The turntable was rotated through 360 degrees to determine the position of maximum emission level. The EUT is placed at 3m away from the receiving antenna, which varied from 1m to 4m to find out the highest emission. Each emission was to be maximized by changing the polarization of receiving antenna both horizontal and vertical.



3.2 FCC PART 15.205 RESTRICTED BANDS OF OPERATIONS

(a) Except as shown in paragraph (d) of this section, only spurious emissions are permitted in any of the frequency bands listed below:

MHz	MHz	MHz	GHz
0.090 - 0.110	16.42 - 16.423	399.9 - 410	4.5 - 5.15
10.495 - 0.505	16.69475 - 16.69525	608 - 614	5.35 - 5.46
2.1735 - 2.1905	16.80425 - 16.80475	960 - 1240	7.25 - 7.75
4.125 - 4.128	25.5 - 25.67	1300 - 1427	8.025 - 8.5
4.17725 - 4.17775	37.5 - 38.25	1435 - 1626.5	9.0 - 9.2
4.20725 - 4.20775	73 - 74.6	1645.5 - 1646.5	9.3 - 9.5
6.215 - 6.218	74.8 - 75.2	1660 - 1710	10.6 - 12.7
6.26775 - 6.26825	108 - 121.94	1718.8 - 1722.2	13.25 - 13.4
6.31175 - 6.31225	123 - 138	2200 - 2300	14.47 - 14.5
8.291 - 8.294	149.9 - 150.05	2310 - 2390	15.35 - 16.2
8.362 - 8.366	156.52475 - 156.52525	2483.5 - 2500	17.7 - 21.4
8.37625 - 8.38675	156.7 - 156.9	2655 - 2900	22.01 - 23.12
8.41425 - 8.41475	162.0125 - 167.17	3260 - 3267	23.6 - 24.0
12.29 - 12.293	167.72 - 173.2	3332 - 3339	31.2 - 31.8
12.51975 - 12.52025	240 - 285	3345.8 - 3358	36.43 - 36.5
12.57675 - 12.57725	322 - 335.4	3600 - 4400	(²)
13.36 - 13.41			

1 Until February 1, 1999, this restricted band shall be 0.490-0.510 MHz.

2 Above 38.6

(b) Except as provided in paragraphs (d) and (e), the field strength of emissions appearing within these frequency bands shall not exceed the limits shown in Section 15.209. At frequencies equal to or less than 1000 MHz, compliance with the limits in Section 15.209 shall be demonstrated using measurement instrumentation employing a CISPR quasi-peak detector. Above 1000 MHz, compliance with the emission limits in Section 15.209 shall be demonstrated based on the average value of the measured emissions. The provisions in Section 15.35 apply to these measurements.

3.3 DESCRIPTION OF TEST MODES

New Battery was used for all testing and the worst radiated emission case from X,Y and Z axis evaluation was selected for testing, The EUT was tested under following modes:

Modes:

1. Continuous transmitting

Channels:

1. 2.405 GHz
2. 2.440 GHz
3. 2.475 GHz



3.4 DESCRIPTION OF THE SUPPORT EQUIPMENTS

Setup Diagram

See test photographs attached in appendix 1 for the actual connections between EUT and support equipment.





Support Equipment

Peripherals Devices:

OUTSIDE SUPPORT EQUIPMENT							
No.	Equipment	Model	Serial No.	FCC ID/ BSMI ID	Trade name	Data Cable	Power Cord
1.	N/A	N/A	N/A	N/A	N/A	N/A	N/A
INSIDE SUPPORT EQUIPMENT							
No.	Equipment	Model	Serial No.	FCC ID/ BSMI ID	Trade name	Data Cable	Power Cord
1.	Li-ion Battery	508268	N/A	N/A	N/A	N/A	N/A

Note: All the above equipment /cable were placed in worse case position to maximize emission signals during emission test

Grounding: Grounding was in accordance with the manufacturer's requirement and conditions for the intended use.



4. TEST AND MEASUREMENT EQUIPMENT

4.1 CALIBRATION

The measuring equipment utilized to perform the tests documented in the report has been calibrated once a year or in accordance with the manufacturer's recommendations, and is traceable to recognized national standards.

4.2 EQUIPMENT

The following list contains measurement equipment used for testing. The equipment conforms to the requirement of CISPR 16-1, ANSI C63.2 and. Other required standards.

Calibration of all test and measurement, including any accessories that may effect such calibration, is checked frequently to ensure the accuracy. Adjustments are made and correction factors are applied in accordance with the instructions contained in the respective.

LIST OF TEST AND MEASUREMENT EQUIPMENT

Test Site	Instrument	Manufacturer	Model No.	S/N	Next Cal. Date
Conduction	Spectrum (9K--3GHz)	R&S	FSP3	833387/010	2018/09/20
	EMI Receiver	R&S	ESHS10	830223/008	2019/05/22
	LISN	Rolf Heine Hochfrequenztechnik	NNB-2/16z	98062	2019/05/25
	ISN	Schwarzbeck	8-Wire ISN CAT5	CAT5-8158-0094	2018/09/21
	RF Cable	N/A	N/A	EMI-3	2018/10/19
Radiation	Bilog antenna(30M-1G)	ETC	MCTD2786B	BLB16M04004/J B-5-004	2019/05/03
	Double Ridged Guide Horn antenna(1G-18G)	ETC	MCTD 1209	DRH15N0 2009	2018/11/23
	Horn antenna (18G-26G)	com-power	AH-826	81000	2018/08/15
	LOOP Antenna (Below 30M)	com-power	AL-130	17117	2018/10/04
	Pre amplifier (30M-1G)	EMC INSTRUMENT	EMC9135	980334	2019/05/04
	Microwave Preamplifier (1G-18G)	EMC INSTRUMENT	EMC051845	980108&AT -18001	2018/10/23
	Pre amplifier	MITEQ	JS4-18002600-3	808329	2018/08/10



	(18G~26G)		0-5A		
	EMI Test Receiver	R&S	ESVS30 (20M-1000MHz)	826006/002	2018/11/28
	RF Cable (open site)	EMCI	N male on end of both sides (EMI4)	30m	2018/10/19
	RF CABLE (1~26.5G)	HARBOUT INDUSTRIES	LL142MI(4M+4M)	NA	2019/03/08
	RF CABLE (1~26.5G)	HARBOUR INDUSTRIES	LL142MI(7M)	NA	2018/08/11
	Spectrum(9K -26.5GHz)	R&S	FSEM	830180/006	2019/03/25
	Spectrum (9K--40GHz)	AGILENT	8564EC	4046A0032	2019/03/01
Software	e3	AUDIX	N/A	N/A	N/A

***CALIBRATION INTERVAL OF INSTRUMENTS LISTED ABOVE IS ONE YEAR**



5. SECTION 15.205 REQUIREMENTS (BAND EDGE)

5.1 TEST SETUP

Refer to paragraph 7.1.

5.2 LIMIT

Restricted Bands:

MHz	MHz	MHz	GHz
0.090 - 0.110	16.42 - 16.423	399.9 - 410	4.5 - 5.15
¹ 0.495 - 0.505	16.69475 - 16.69525	608 - 614	5.35 - 5.46
2.1735 - 2.1905	16.80425 - 16.80475	960 - 1240	7.25 - 7.75
4.125 - 4.128	25.5 - 25.67	1300 - 1427	8.025 - 8.5
4.17725 - 4.17775	37.5 - 38.25	1435 - 1626.5	9.0 - 9.2
4.20725 - 4.20775	73 - 74.6	1645.5 - 1646.5	9.3 - 9.5
6.215 - 6.218	74.8 - 75.2	1660 - 1710	10.6 - 12.7
6.26775 - 6.26825	108 - 121.94	1718.8 - 1722.2	13.25 - 13.4
6.31175 - 6.31225	123 - 138	2200 - 2300	14.47 - 14.5
8.291 - 8.294	149.9 - 150.05	2310 - 2390	15.35 - 16.2
8.362 - 8.366	156.52475 - 156.52525	2483.5 - 2500	17.7 - 21.4
8.37625 - 8.38675	156.7 - 156.9	2690 - 2900	22.01 - 23.12
8.41425 - 8.41475	162.0125 - 167.17	3260 - 3267	23.6 - 24.0
12.29 - 12.293	167.72 - 173.2	3332 - 3339	31.2 - 31.8
12.51975 - 12.52025	240 - 285	3345.8 - 3358	36.43 - 36.5
12.57675 - 12.57725	322 - 335.4	3600 - 4400	(²)
13.36 - 13.41			

Operation within the bands:

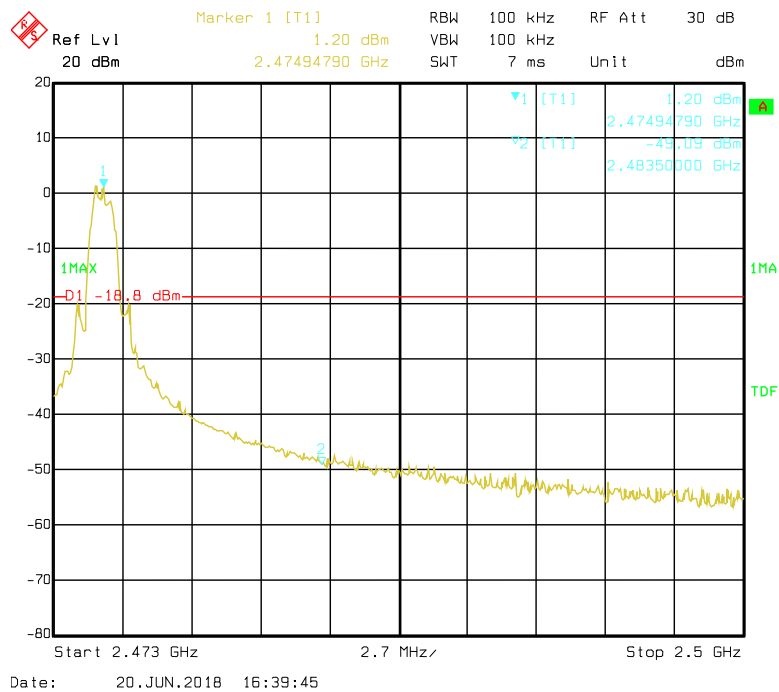
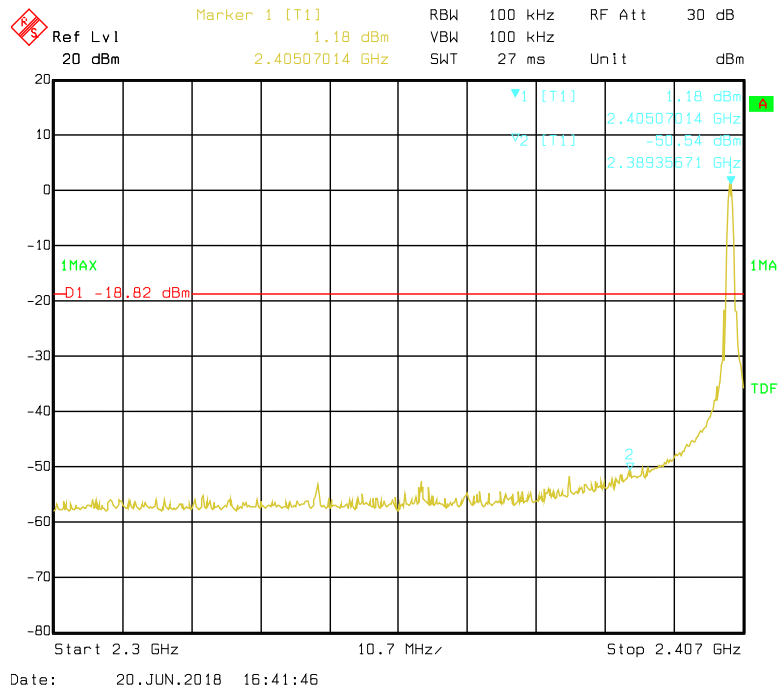
902 - 928 MHz, 2400 - 2483.5 MHz, 5725 - 5875 MHz, and 24.0 - 24.25 GHz.

Frequency (Hz)	Field Strength (μ V/m at 3-meter)	Field Strength (dB μ V/m at 3-meter)
1.705-30	30 (at 30-meter)	49.5
30-88	100	40
88-216	150	43
216-960	200	46
Above 960	500	54



5.3 RESULT: PASSED

5.4 TEST DATA:





<2400 MHz										
Fundamental Frequency: 2405 MHz (Worst case)										
Frequency (MHz)	Ant-Pol H/V	Meter Reading (dBuV)	Corrected Factor (dB)	Result (dBuV/m)	Remark	Limit (dBuV/m)		Margin (dB)	Table Deg.	Ant High (m)
						Peak	Ave			
2390.00	H	69.55	-14.08	55.47	Peak	74	--	-18.53	3	1.5
2390.00	H	56.45	-14.08	42.37	Ave	--	54	-11.63	3	1.5
2351.88	V	62.98	-14.05	48.93	Peak	74	--	-25.07	360	1.5
2351.88	V	50.87	-14.05	36.82	Ave	--	54	-17.18	360	1.5
>2483.5 MHz										
Fundamental Frequency: 2475 MHz (Worst case)										
Frequency (MHz)	Ant-Pol H/V	Meter Reading (dBuV)	Corrected Factor (dB)	Result (dBuV/m)	Remark	Limit (dBuV/m)		Margin (dB)	Table Deg.	Ant High (m)
						Peak	Ave			
2483.50	H	66.27	-13.79	52.48	Peak	74	--	-21.52	356	1.5
2483.50	H	52.9	-13.79	39.11	Ave	--	54	-14.89	356	1.5
2493.74	V	61.7	-13.83	47.87	Peak	74	--	-26.13	360	1.5
2493.74	V	51.09	-13.83	37.26	Ave	--	54	-16.74	360	1.5

Note:

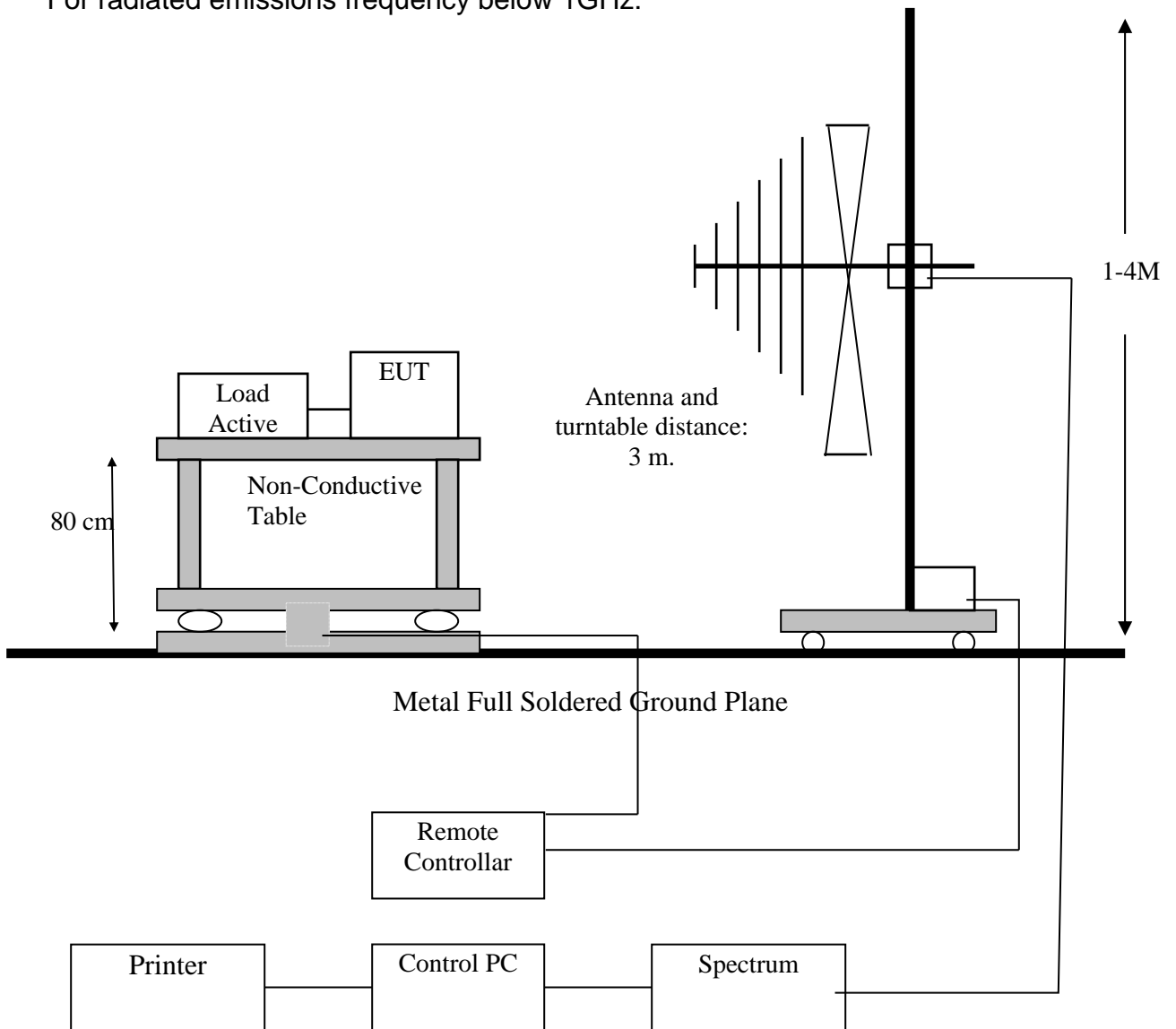
1. Result = Reading level + Correction factor
2. Correction factor : Antenna factor, Cable loss, Pre-Amp, etc.
3. All emissions as described above were determining by rotating the EUT through three orthogonal axes to maximizing the emissions if the EUT belongs to hand-held or body-worn devices.
4. Measurements above 1000 MHz, Peak detector setting:
1 MHz RBW with 1 MHz VBW (Peak Detector).
5. Measurements above 1000 MHz, Average detector setting:
1 MHz RBW with 1 MHz VBW (RMS Detector).
6. Peak detector measurement data will represent the worst case results.
7. Where limits are specified for both average and peak detector functions, if the peak measured value complies with the average limit, it is unnecessary to perform an average measurement.



6. SECTION 15.209 AND 15.249 REQUIREMENTS

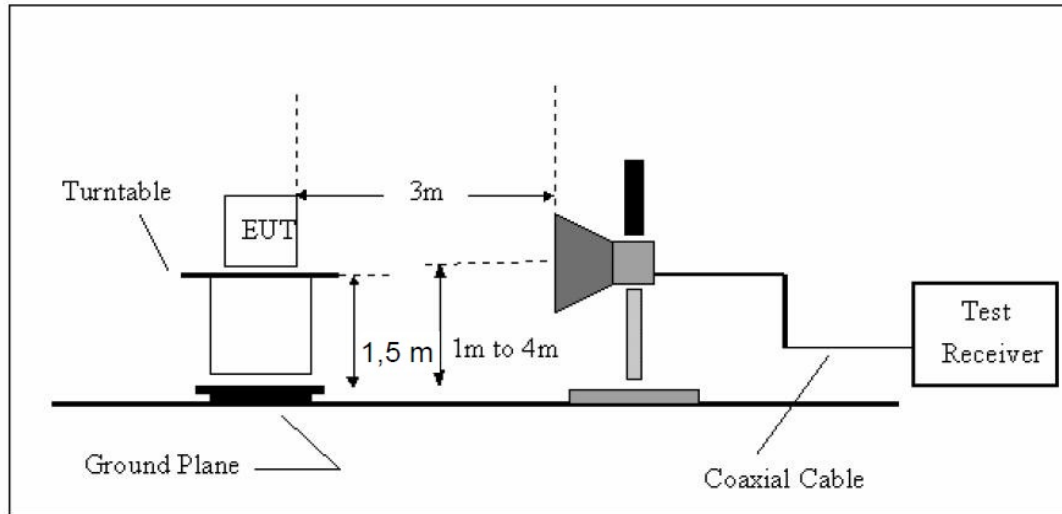
6.1 TEST SETUP

For radiated emissions frequency below 1GHz:





For radiated emissions frequency above 1GHz:



6.2 LIMIT

Fundamental:

Fundamental Frequency (MHz)	Field Strength of Fundamental (dB μ V/m at 3-meter)	Detector
902 - 928 2400 - 2483 5725 - 5875	114	Peak
902 - 928 2400 - 2483 5725 - 5875	94	AV

Harmonics :

Fundamental Frequency (MHz)	Field Strength of Harmonics (dB μ V/m at 3-meter)	Detector
902 - 928 2400 - 2483 5725 - 5875	74	Peak
902 - 928 2400 - 2483 5725 - 5875	54	AV



The field strength of any emissions which appear outside of this band shall not exceed the general radiated emission limits in section 15.209 as below.

Frequency (MHz)	Field Strength (mV/m)	Measurement Distance (m)
1.705-30	30	30
30-88	100*	3
88-216	150*	3
216-960	200*	3
Above 960	500*	3

**Except as provided in paragraph (g), fundamental emissions from intentional radiators operating under this Section shall not be located in the frequency bands 54-72 MHz, 76-88 MHz, 174-216 MHz or 470-806 MHz. However, operation within these frequency bands is permitted under other sections of this Part, e.g., Sections 15.231 and 15.241.
In the above emission table, the tighter limit applies at the band edges.*

Frequency (Hz)	Field Strength ($\mu\text{V/m}$ at 3-meter)	Field Strength ($\text{dB}\mu\text{V/m}$ at 3-meter)
1.705-30	30 (at 30-meter)	49.5
30-88	100	40
88-216	150	43
216-960	200	46
Above 960	500	54

6.3 TEST PROCEDURE

1. The EUT was placed on a turntable, which was 0.8m above ground plane.
2. The turntable was rotated for 360 degrees to determine the position of maximum emission level.
3. EUT was set at 3m away from the receiving antenna, which was varied from 1m to 4m to find out the highest emissions.
4. Maximum procedure was performed on the six highest emissions to ensure EUT compliance.
5. And also, each emission was maximized by changing the polarization of receiving antenna, both horizontal and vertical.



6. Repeated above procedures until the measurements for all frequencies are completed.

6.4 RESULT: PASSED

6.5 TEST DATA:

All frequencies not described in this test report and within the range of the general radiated emission limits are not detectable significantly. The table as below is representing worst emissions found.

Radiated Emissions Test Data Below 30MHz

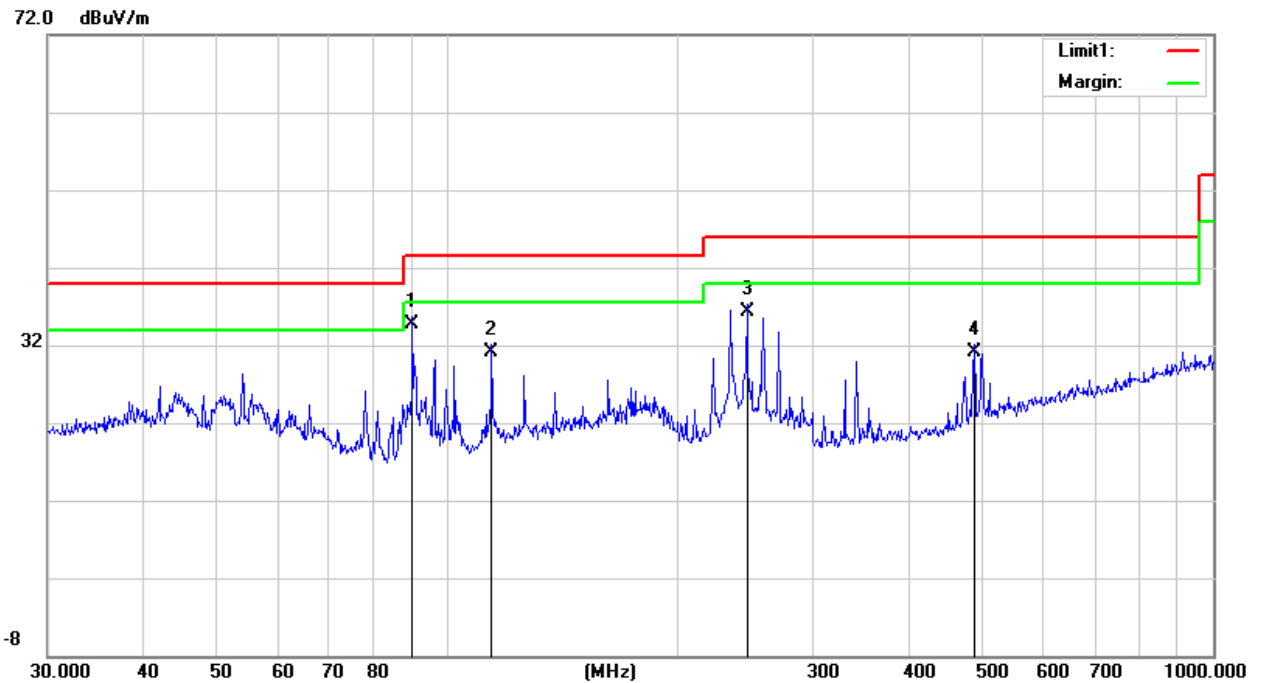
No emission found between lowest internal used/generated frequencies to 30MHz.



Radiated Emissions Test Data 30MHz to 1GHz

Power	: 120Vac 60Hz	Temperature	: 23 °C
Test Mode	: Tx 2405MHz (Worst mode)	Humidity	: 55 %
Test Date	: 2018.06.14	Memo	: 55 %

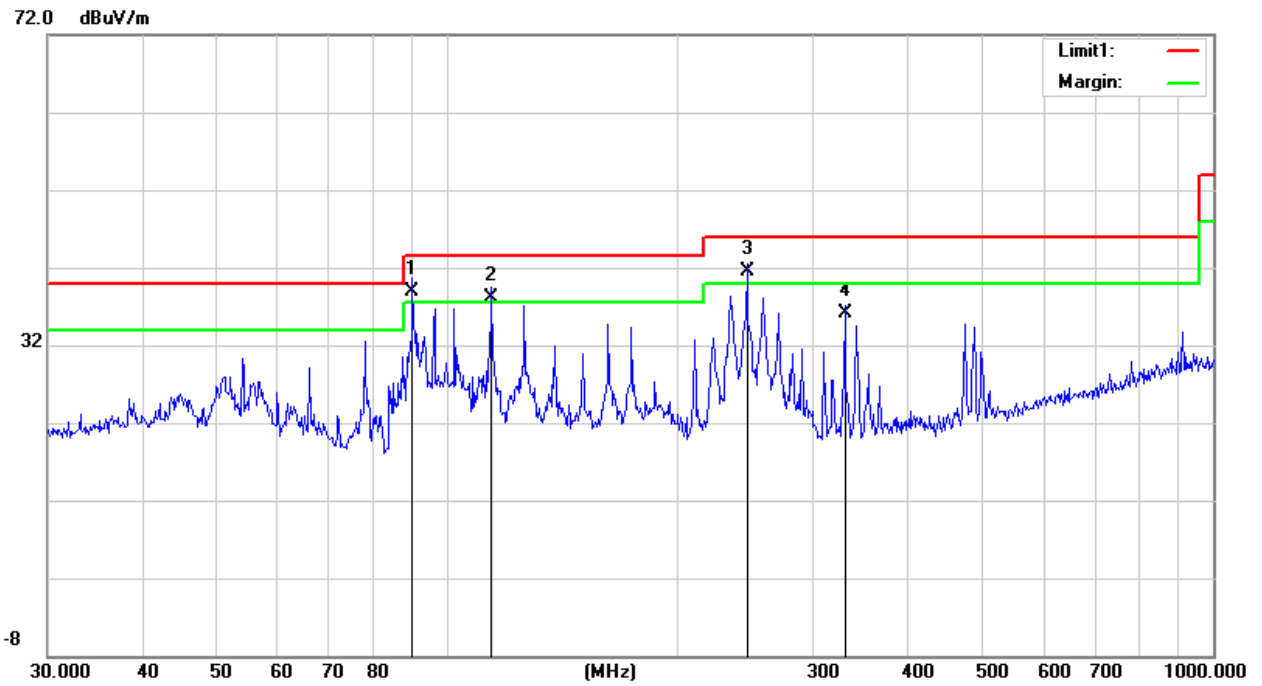
Vertical



No.	Mk.	Freq. MHz	Reading Level dBuV	Correct Factor dB	Measure- ment dBuV/m	Limit dB/m	Over dB	Detector	Comment
1	*	89.9047	24.47	10.30	34.77	43.50	-8.73	QP	
2		114.1137	18.75	12.44	31.19	43.50	-12.31	QP	
3		245.9508	22.92	13.42	36.34	46.00	-9.66	QP	
4		487.3149	13.98	17.05	31.03	46.00	-14.97	QP	



Horizontal

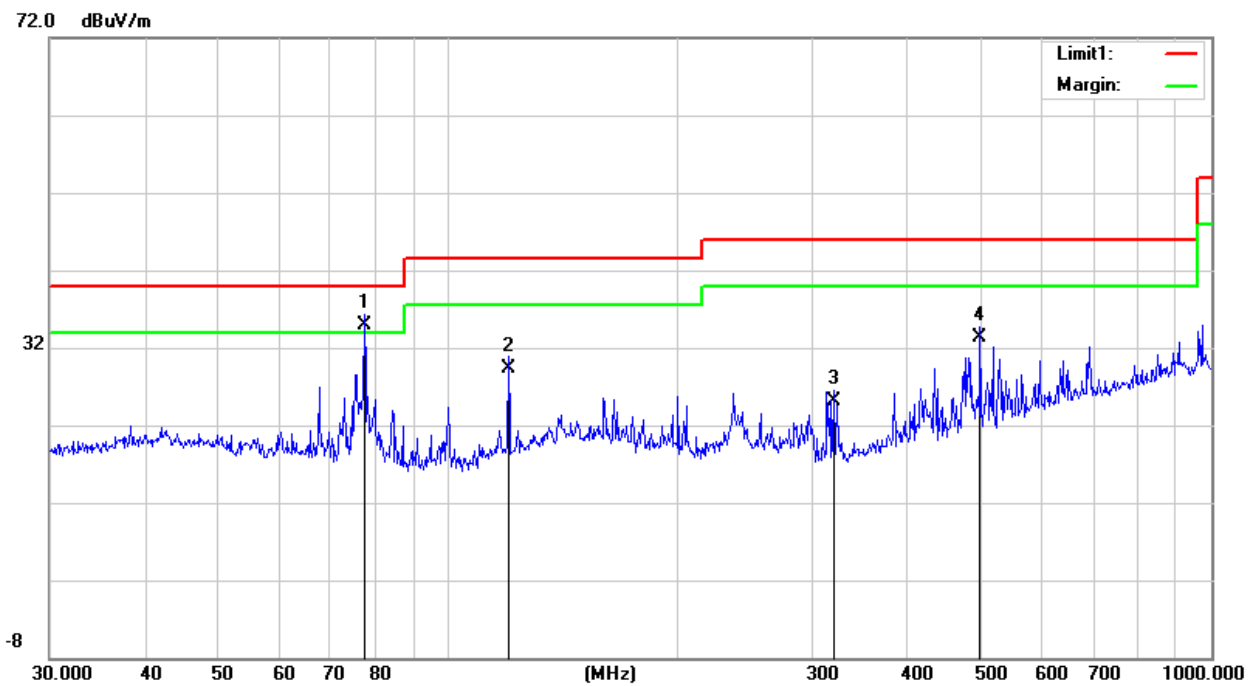


No.	Mk.	Freq. MHz	Reading Level dBuV	Correct Factor dB	Measure- ment dBuV/m	Limit dB/m	Over dB	Detector	Comment
1	!	89.9746	28.57	10.30	38.87	43.50	-4.63	QP	
2	!	114.1337	25.75	12.44	38.19	43.50	-5.31	QP	
3	*	245.9508	28.02	13.42	41.44	46.00	-4.56	QP	
4		330.1949	22.54	13.62	36.16	46.00	-9.84	QP	



Power	: 3.7Vdc	Temperature	: 23 °C
Test Mode	: Tx 2405MHz (Worst mode)	Humidity	: 55 %
Test Date	: 2018.06.14	Memo	: 55 %

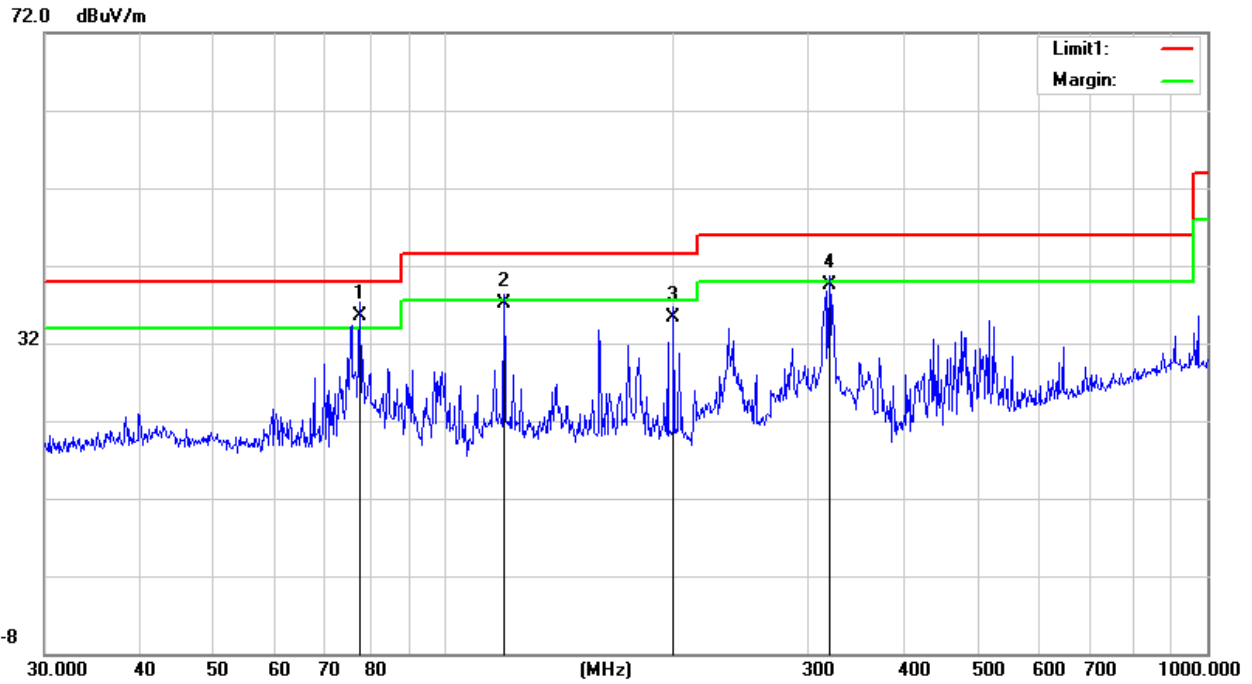
Vertical



No.	Mk.	Freq. MHz	Reading Level dBuV	Correct Factor dB	Measure- ment dBuV/m	Limit dB/m	Over dB	Detector	Comment
1	*	77.5927	24.23	10.75	34.98	40.00	-5.02	QP	
2		119.8555	16.38	12.99	29.37	43.50	-14.13	QP	
3		319.9370	11.63	13.38	25.01	46.00	-20.99	QP	
4		497.6764	16.05	17.25	33.30	46.00	-12.70	QP	



Horizontal



No.	Mk.	Freq. MHz	Reading Level dBuV	Correct Factor dB	Measure- ment dBuV/m	Limit dB/m	Over dB	Detector	Comment
1	*	77.5628	24.67	10.76	35.43	40.00	-4.57	QP	
2		119.8556	24.03	12.99	37.02	43.50	-6.48	QP	
3		199.9856	23.94	11.40	35.34	43.50	-8.16	QP	
4		319.9370	26.10	13.38	39.48	46.00	-6.52	QP	



EUT :	Controllar	Model Name :	I8
Temperature :	25 °C	Relative Humidity :	60%
Test Mode :	TX 2405MHz	Test Voltage :	3.7Vdc from battery
Measurement Distance	3 m	Frequency Range	1GHz to 25GHz
RBW/VBW	Spurious emission: 1MHz/3MHz for Peak, 1MHz/10Hz for Average.		

(a) Antenna polarization: Horizontal

Frequency (MHz)	Reading Level (dBuV)	Correct Factor (dB)	Measure Level (dBuV/m)	Limit (dBuV/m)	Over (dB)	Detector Type
2405.00	99.09	3.65	102.74	114.00	-11.26	peak
2405.00	82.43	3.65	86.08	94.00	-7.92	AVG
4810.00	44.42	5.08	49.50	74.00	-24.50	peak
4810.00	36.03	5.08	41.11	54.00	-12.89	AVG
7215.00	40.78	7.16	47.94	74.00	-26.06	peak
7215.00	32.19	7.16	39.35	54.00	-14.65	AVG

(b) Antenna polarization: Vertical

Frequency (MHz)	Reading Level (dBuV)	Correct Factor (dB)	Measure Level (dBuV/m)	Limit (dBuV/m)	Over (dB)	Detector Type
2405.00	93.09	3.65	96.74	114.00	-17.26	peak
2405.00	76.08	3.65	79.73	94.00	-14.27	AVG
4810.00	41.78	5.08	46.86	74.00	-27.14	peak
4810.00	28.71	5.08	33.79	54.00	-20.21	AVG
7215.00	36.79	7.16	43.95	74.00	-30.05	peak
7215.00	29.29	7.16	36.45	54.00	-17.55	AVG



EUT :	Controllar	Model Name :	I8
Temperature :	25 °C	Relative Humidity :	60%
Test Mode :	TX 2440MHz	Test Voltage :	3.7Vdc from battery
Measurement Distance	3 m	Frequency Range	1GHz to 25GHz
RBW/VBW	Spurious emission: 1MHz/3MHz for Peak, 1MHz/10Hz for Average.		

(a) Antenna polarization: Horizontal

Frequency (MHz)	Reading Level (dBuV)	Correct Factor (dB)	Measure Level (dBuV/m)	Limit (dBuV/m)	Over (dB)	Detector Type
2440.00	98.21	3.68	101.89	114.00	-12.11	peak
2440.00	81.87	3.68	85.55	94.00	-8.45	AVG
4880.00	49.14	5.13	54.27	74.00	-19.73	peak
4880.00	35.06	5.13	40.19	54.00	-13.81	AVG
7320.00	39.84	7.20	47.04	74.00	-26.96	peak
7320.00	35.78	7.20	42.98	54.00	-11.02	AVG

(b) Antenna polarization: Vertical

Frequency (MHz)	Reading Level (dBuV)	Correct Factor (dB)	Measure Level (dBuV/m)	Limit (dBuV/m)	Over (dB)	Detector Type
2440.00	94.39	3.68	98.07	114.00	-15.93	peak
2440.00	79.78	3.68	83.46	94.00	-10.54	AVG
4880.00	45.68	5.13	50.81	74.00	-23.19	peak
4880.00	34.32	5.13	39.45	54.00	-14.55	AVG
7320.00	43.11	7.20	50.31	74.00	-23.69	peak
7320.00	34.21	7.20	41.41	54.00	-12.59	AVG



EUT :	Controllar	Model Name :	I8
Temperature :	25 °C	Relative Humidity :	60%
Test Mode :	TX 2475MHz	Test Voltage :	3.7Vdc from battery
Measurement Distance	3 m	Frequency Range	1GHz to 25GHz
RBW/VBW	Spurious emission: 1MHz/3MHz for Peak, 1MHz/10Hz for Average.		

(a) Antenna polarization: Horizontal

Frequency (MHz)	Reading Level (dBuV)	Correct Factor (dB)	Measure Level (dBuV/m)	Limit (dBuV/m)	Over (dB)	Detector Type
2475.00	98.24	3.71	101.95	114.00	-12.05	peak
2475.00	84.79	3.71	88.50	94.00	-5.50	AVG
4950.00	49.17	5.19	54.36	74.00	-19.64	peak
4950.00	31.30	5.19	36.49	54.00	-17.51	AVG
7425.00	37.38	7.25	44.63	74.00	-29.37	peak
7425.00	29.78	7.25	37.03	54.00	-16.97	AVG

(b) Antenna polarization: Vertical

Frequency (MHz)	Reading Level (dBuV)	Correct Factor (dB)	Measure Level (dBuV/m)	Limit (dBuV/m)	Over (dB)	Detector Type
2475.00	92.54	3.71	96.25	114.00	-17.75	peak
2475.00	73.73	3.71	77.44	94.00	-16.56	AVG
4950.00	46.33	5.19	51.52	74.00	-22.48	peak
4950.00	33.99	5.19	39.18	54.00	-14.82	AVG
7425.00	35.29	7.25	42.54	74.00	-31.46	peak
7425.00	27.33	7.25	34.58	54.00	-19.42	AVG



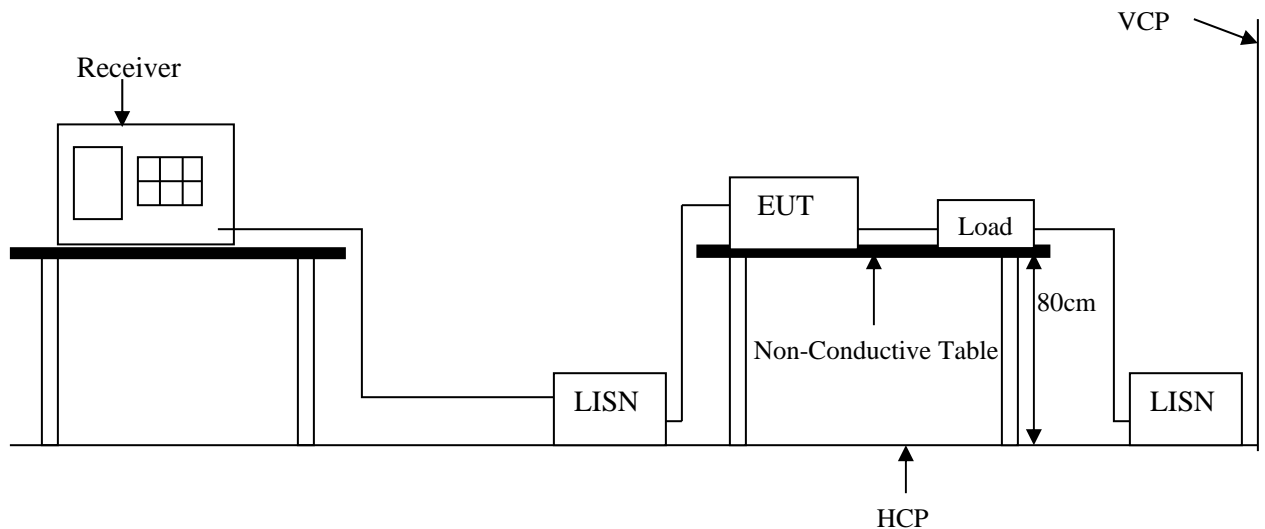
Note:

1. Measure-ment level = Reading level + Correction factor
2. Correction factor : Antenna factor, Cable loss, Pre-Amp, etc.
3. All emissions as described above were determining by rotating the EUT through three orthogonal axes to maximizing the emissions if the EUT belongs to hand-held or body-worn devices.
4. Measurements from 9 kHz to 150 kHz, Peak detector setting: 100 Hz RBW
5. Measurements from 150 kHz to 30MHz, Peak detector setting: 10 kHz RBW
6. Measurements from 30 MHz to 1000 MHz, Peak detector setting: 100 kHz RBW
7. Measurements from 9 kHz to 150 kHz, CISPR Quasi-Peak detector: 200 Hz RBW
8. Measurements from 150 kHz to 30MHz, CISPR Quasi-Peak detector: 9 kHz RBW
9. Measurements from 30 MHz to 1000 MHz, CISPR Quasi-Peak detector: 120 kHz RBW
10. Measurements above 1000 MHz, Peak detector setting:
 11. 1 MHz RBW with 1 MHz VBW (Peak Detector).
12. Measurements above 1000 MHz, Average detector setting:
 13. 1 MHz RBW with 1 MHz VBW (RMS Detector).
14. Peak detector measurement data will represent the worst case results.
15. “---” denotes the data which is not available.
16. Where limits are specified for both average and peak detector functions, if the peak measured value complies with the average limit, it is unnecessary to perform an average measurement.



7. SECTION 15.207 REQUIREMENTS (POWERLINE CONDUCTED EMISSIONS)

7.1 TEST SETUP



7.2 LIMIT

Frequency range (MHz)	CLASS B	
	QP dB(uV)	Average dB(uV)
0.15-0.5	66 - 56 dBuV	56 - 46 dBuV
0.5-5.0	56 dBuV	46 dBuV
5.0-30.0	60 dBuV	50 dBuV

Remark: In the above table, the tighter limit applies at the band edges.

7.3 TEST PROCEDURE

The EUT and simulators are connected to the main power through a line impedance stabilization network (LISN). It provides a 50 ohm / 50 μ H coupling impedance for the measuring equipment. The peripheral devices are also connected to the main power through a LISN that provides a 50 ohm / 50 μ H coupling impedance with 50 ohm termination. (Please refer to the block diagram of the test setup and photograph.)

Both sides of AC line are checked for the maximum conducted emission interference. In order to find the maximum emissions, the relating positions of equipment and all of the interference cables must be changed according to EN 55022 regulations: The measurement procedure on conducted emission interference.

The resolution bandwidth of the field strength meter is set at 9 KHz.



7.4 TEST SPECIFICATION

According to PART15.207

7.5 RESULT: PASSED

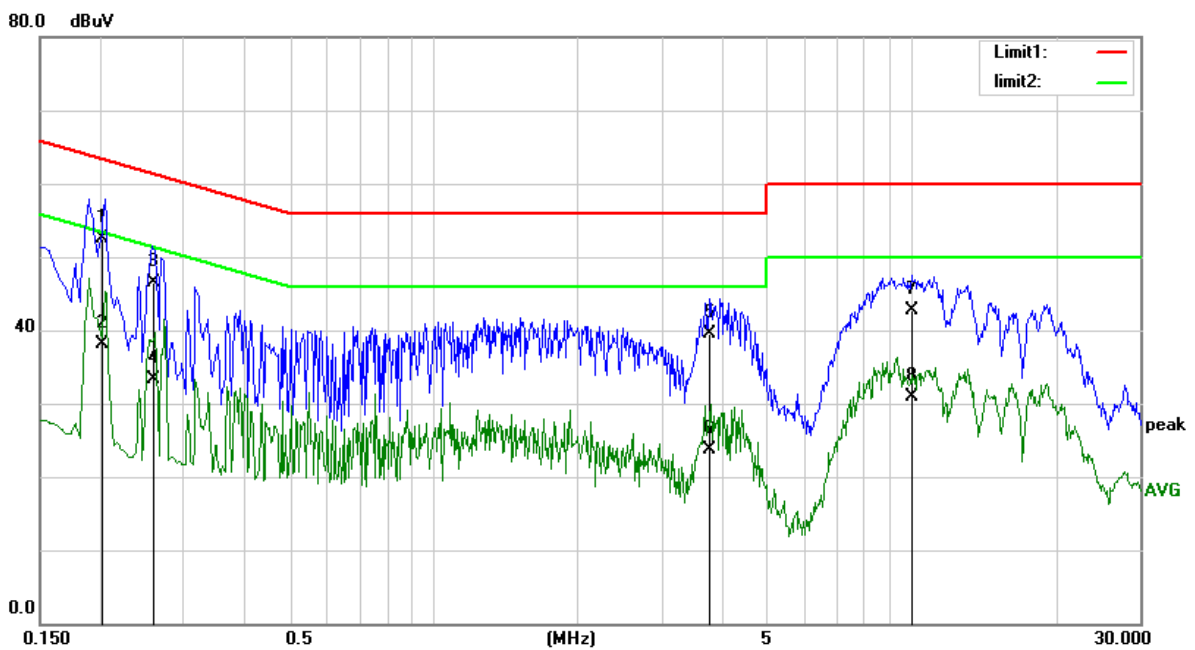
EMI Receiver/Spectrum Analyzer Configuration (for the frequencies tested)

Frequency Range:	150KHz--30MHz
Detector Function:	Quasi-Peak / Average Mode
Resolution Bandwidth:	9KHz



7.6 TEST DATA:

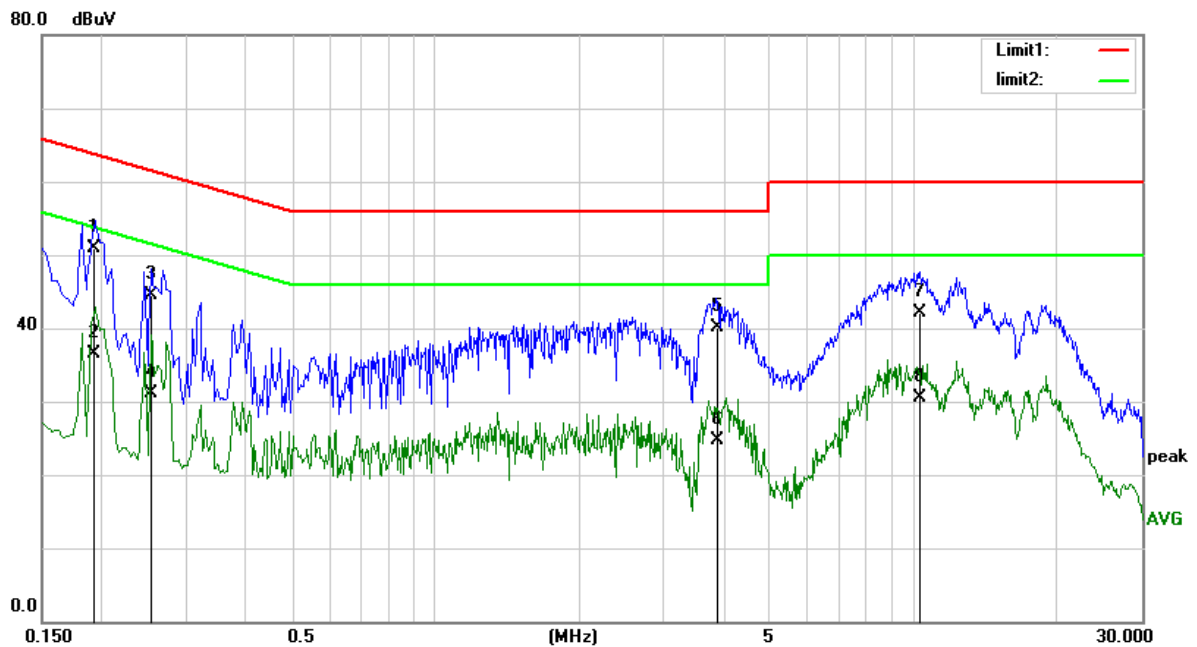
Power	: 120Vac 60Hz	Pol/Phase	: LINE
Test Mode	: Tx 2405MHz (Worst mode)	Temperature	: 23 °C
Test Date	: 2018.06.14	Humidity	: 55 %
Memo			



No.	Mk.	Freq.	Reading Level	Correct Factor	Measurement	Limit	Over	Detector	Comment
		MHz	dBuV	dB	dBuV	dB	dB		
1	*	0.2026	42.85	9.69	52.54	63.50	-10.96	QP	
2		0.2026	28.40	9.69	38.09	53.50	-15.41	AVG	
3		0.2595	36.80	9.69	46.49	61.44	-14.95	QP	
4		0.2595	23.68	9.69	33.37	51.44	-18.07	AVG	
5		3.8007	29.59	9.88	39.47	56.00	-16.53	QP	
6		3.8007	13.85	9.88	23.73	46.00	-22.27	AVG	
7		10.0065	32.48	10.15	42.63	60.00	-17.37	QP	
8		10.0065	20.69	10.15	30.84	50.00	-19.16	AVG	



Power	: 120Vac 60Hz	Pol/Phase	: NEUTRAL
Test Mode	: Tx 2405MHz (Worst mode)	Temperature	: 23 °C
Test Date	: 2018.06.14	Humidity	: 55 %
Memo			

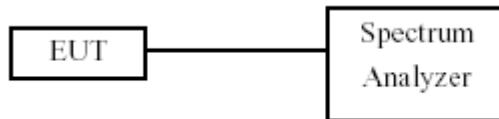


No.	Mk.	Freq. MHz	Reading Level dBuV	Correct Factor dB	Measure- ment dBuV	Limit dB	Over dB	Detector	Comment
1	*	0.1917	41.22	9.69	50.91	63.96	-13.05	QP	
2		0.1917	26.82	9.69	36.51	53.96	-17.45	AVG	
3		0.2528	34.79	9.69	44.48	61.66	-17.18	QP	
4		0.2528	21.44	9.69	31.13	51.66	-20.53	AVG	
5		3.8976	30.28	9.87	40.15	56.00	-15.85	QP	
6		3.8976	14.83	9.87	24.70	46.00	-21.30	AVG	
7		10.3393	32.07	10.11	42.18	60.00	-17.82	QP	
8		10.3393	20.34	10.11	30.45	50.00	-19.55	AVG	



8. 20DB BANDWIDTH MEASUREMENT

8.1 TEST SETUP



8.2 LIMIT

N/A

8.3 TEST PROCEDURE

- a. The transmitter output was connected to the spectrum analyzer.
- b. Set RBW=30KHz and VBW=100KHz.
- c. The 20 dB bandwidth is defined as the total spectrum the power of which is higher than peak power minus 20 dB.
- d. The 20 dB Bandwidth was measured and recorded.

8.4 RESULT: PASSED



8.5 TEST DATA

Test Date: 2018.06.15

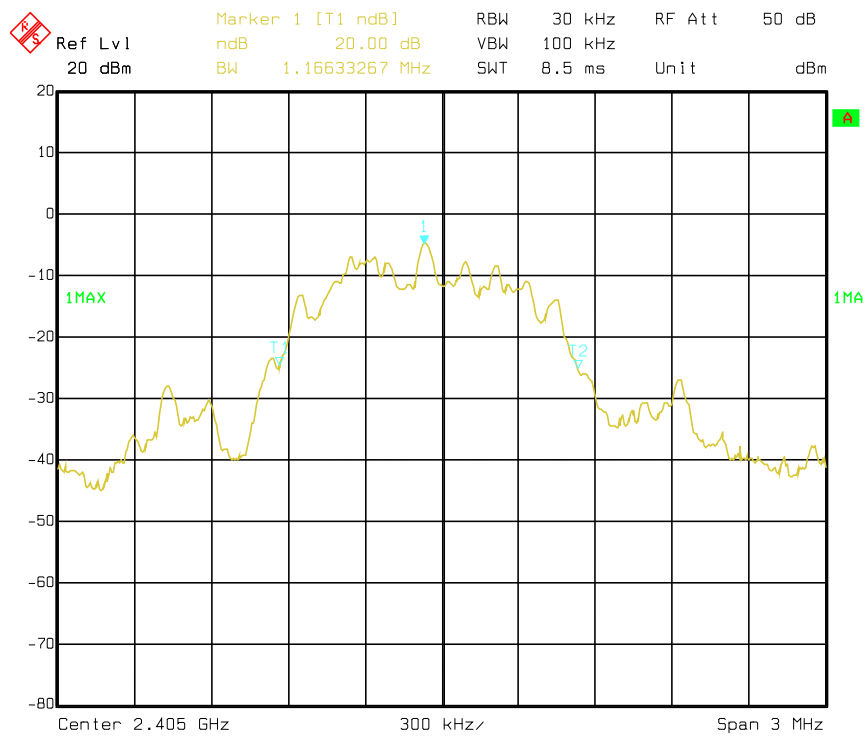
Temperature: 22°C

Atmospheric pressure: 1025 hPa

Humidity: 55%

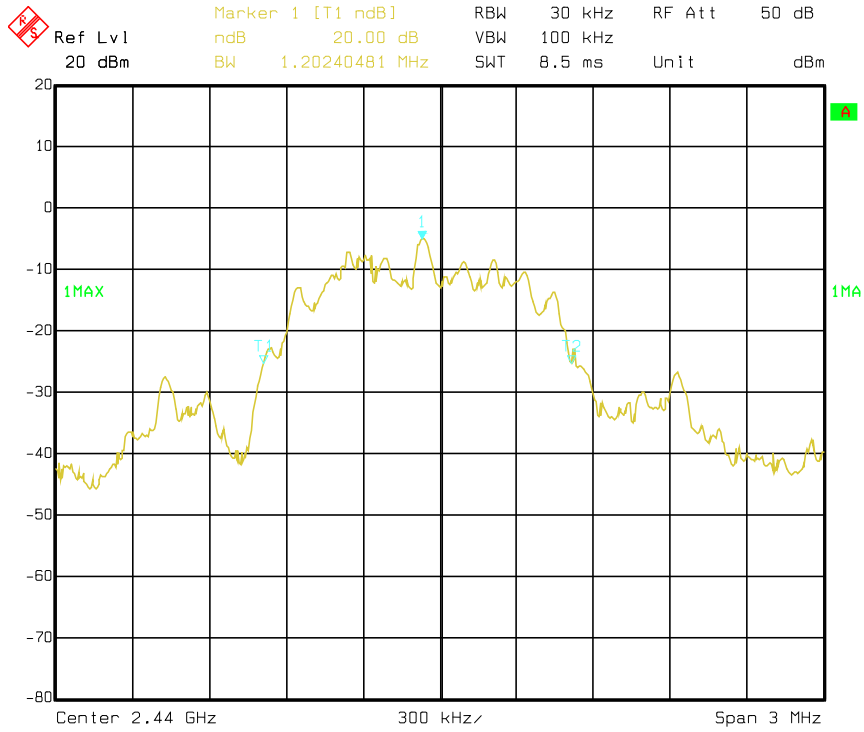
Modulation Standard	Channel	Frequency (MHz)	20dB Bandwidth (MHz)
GFSK	1	2405	1.166
	2	2440	1.202
	3	2475	1.232

Modulation Standard: GFSK
Channel: 1

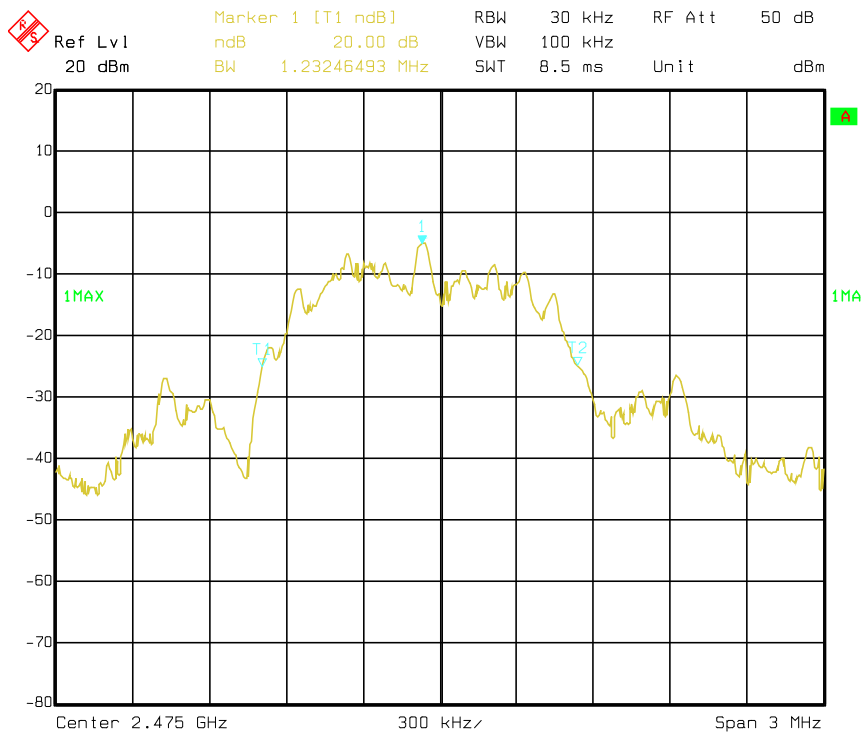




Channel: 2



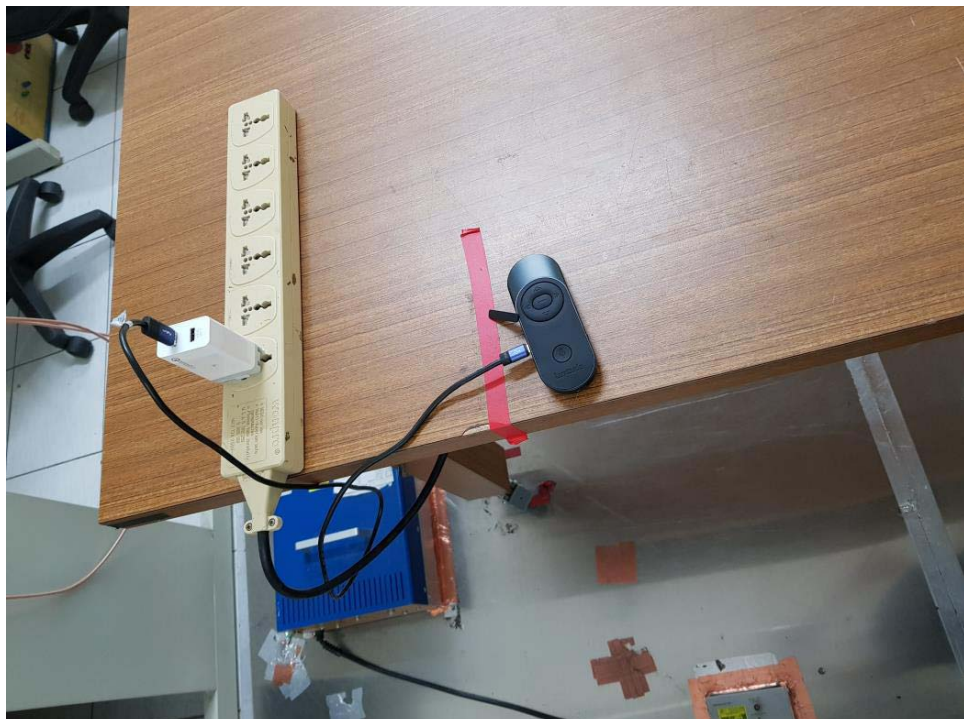
Channel: 3





APPENDIX 1 PHOTOS OF TEST CONFIGURATION

Conducted Measurement Photo





Radiated Measurement Photo (Below 1GHz)





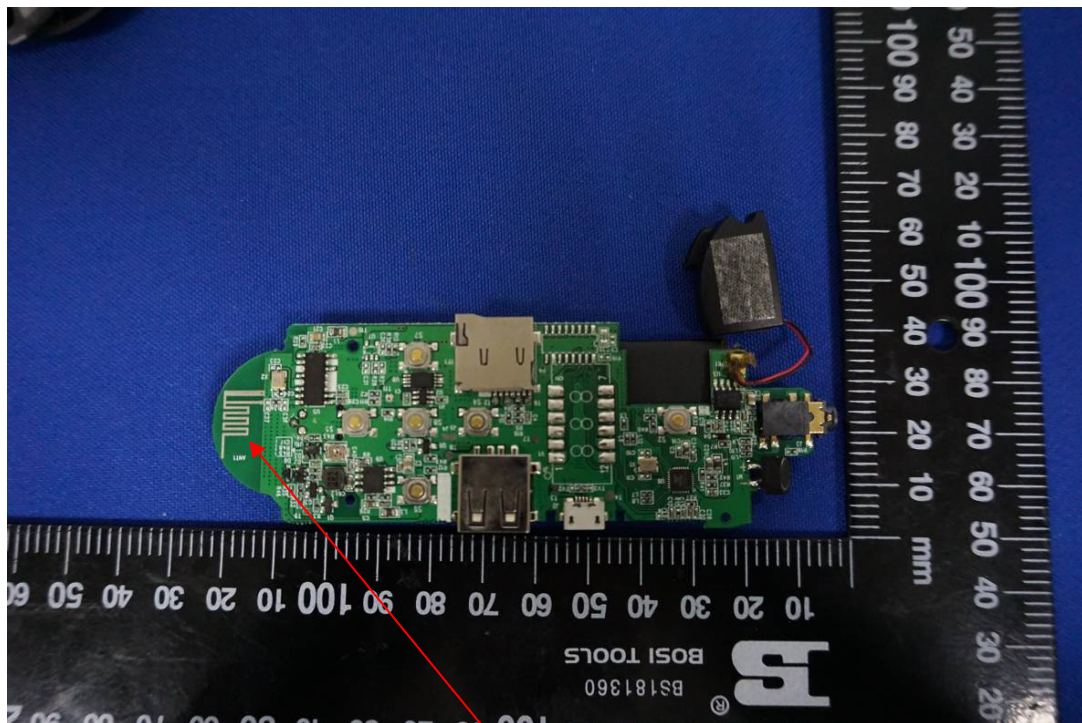
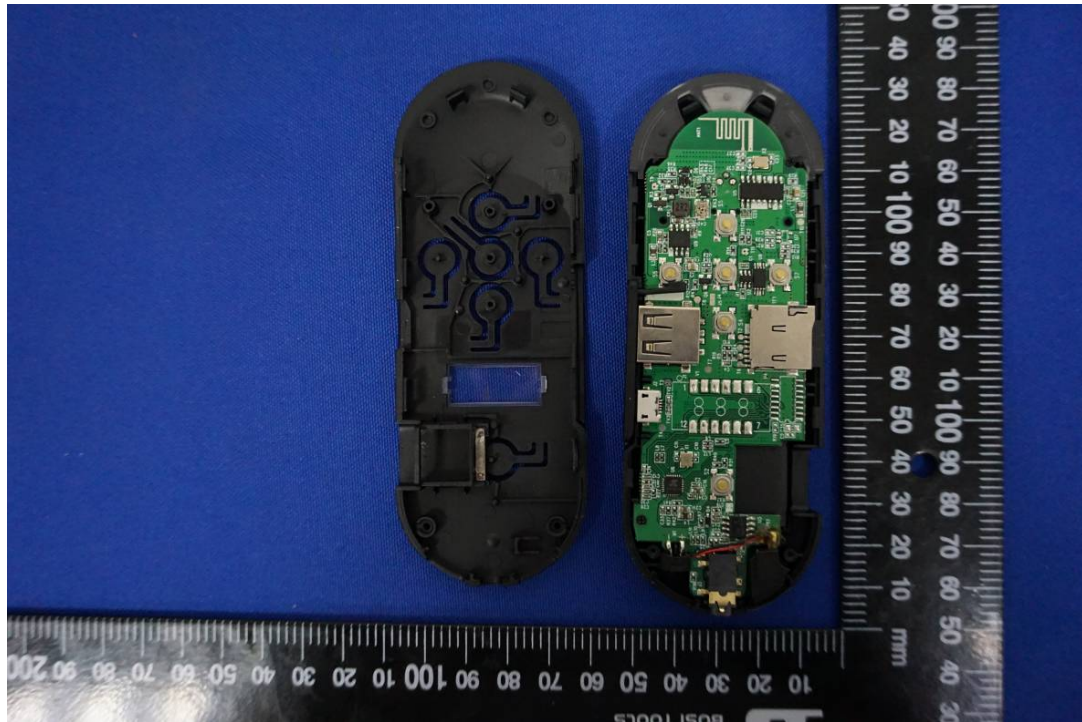
Radiated Measurement Photo (Above 1GHz)



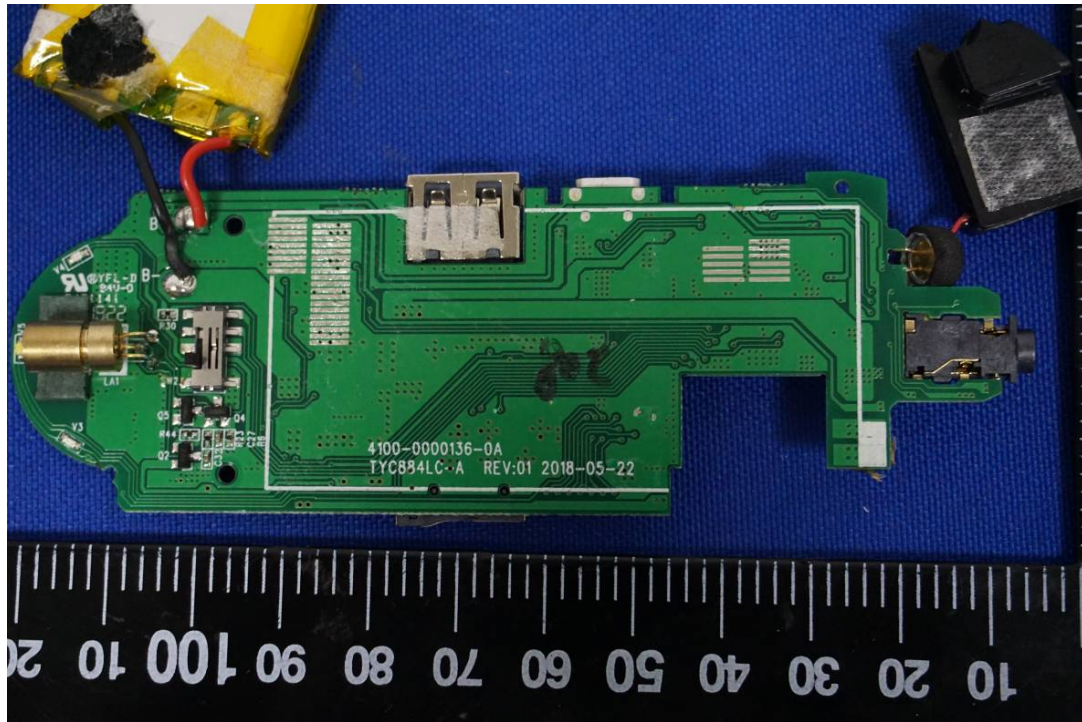


APPENDIX 2 PHOTOS OF EUT





Antenna



END OF REPORT