

CN23UHCQ (P15C-WPC) 001  
CN23UHCQ (FCC-WPTRFEXP) 001  
CN232Q9F (RSS216-WPC) 001  
CN232Q9F (ISED-WPTRFEXP) 001

Page 1 of 17

Product: OEM Wireless Charger 12V 1.8A Input(QL-5289), OEM Wireless Charger 12V 1.0A Input(QL-5290)

Type Identification: QL-5289, QL-5290

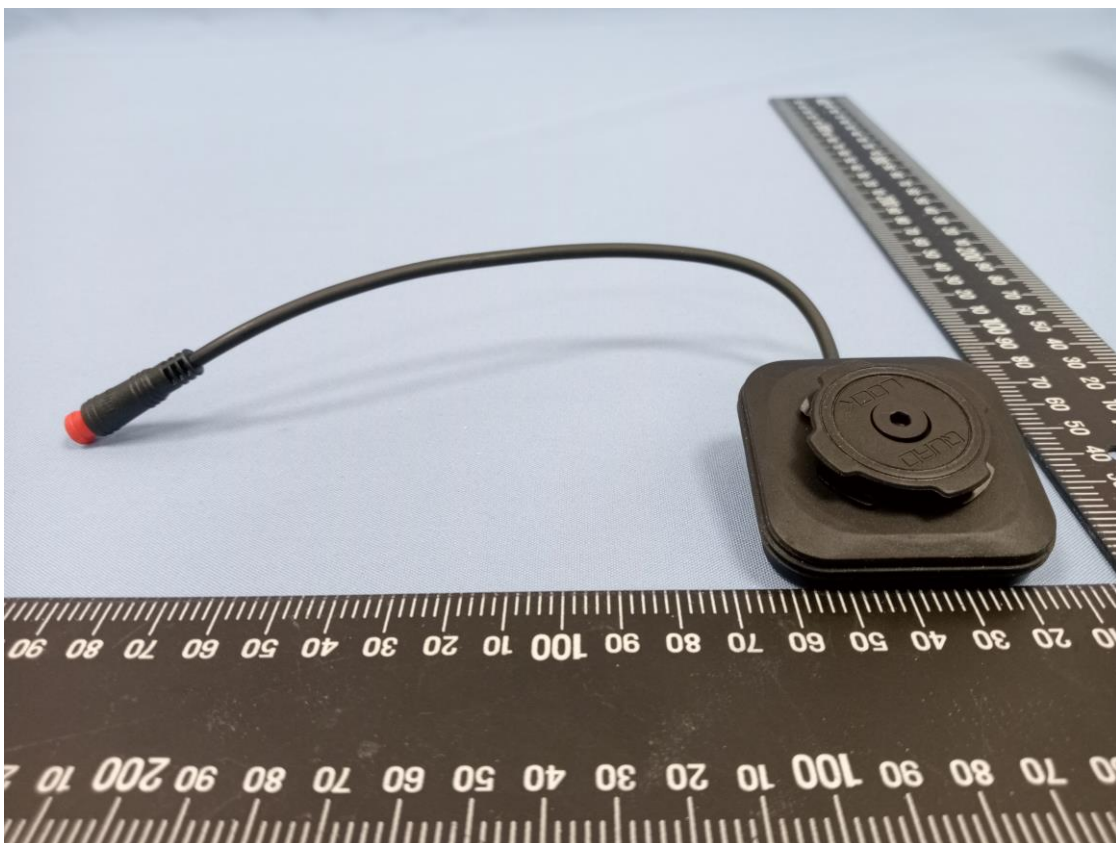
QL-5289



CN23UHCQ (P15C-WPC) 001  
CN23UHCQ (FCC-WPTRFEXP) 001  
CN232Q9F (RSS216-WPC) 001  
CN232Q9F (ISED-WPTRFEXP) 001

Product: OEM Wireless Charger 12V 1.8A Input(QL-5289), OEM Wireless Charger 12V 1.0A Input(QL-5290)

Type Identification: QL-5289, QL-5290

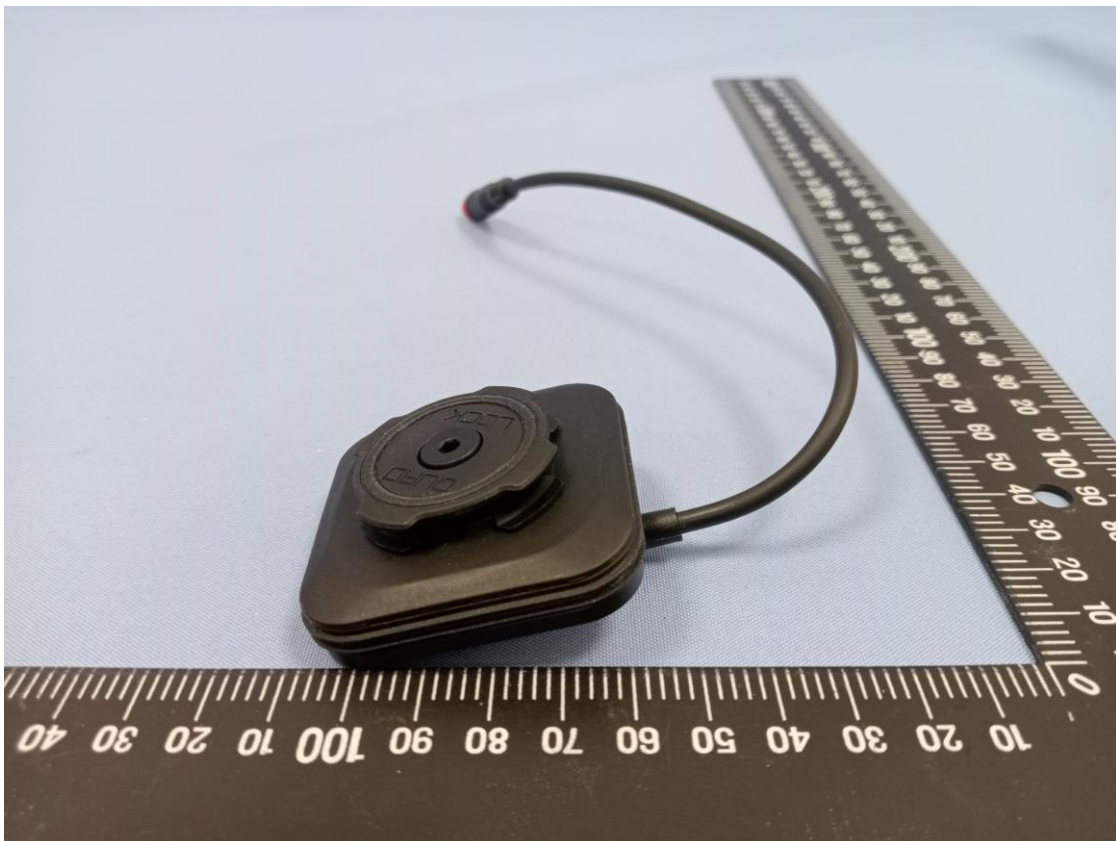




CN23UHCQ (P15C-WPC) 001  
CN23UHCQ (FCC-WPTRFEXP) 001  
CN232Q9F (RSS216-WPC) 001  
CN232Q9F (ISED-WPTRFEXP) 001

Product: OEM Wireless Charger 12V 1.8A Input(QL-5289), OEM Wireless Charger 12V 1.0A Input(QL-5290)

Type Identification: QL-5289, QL-5290

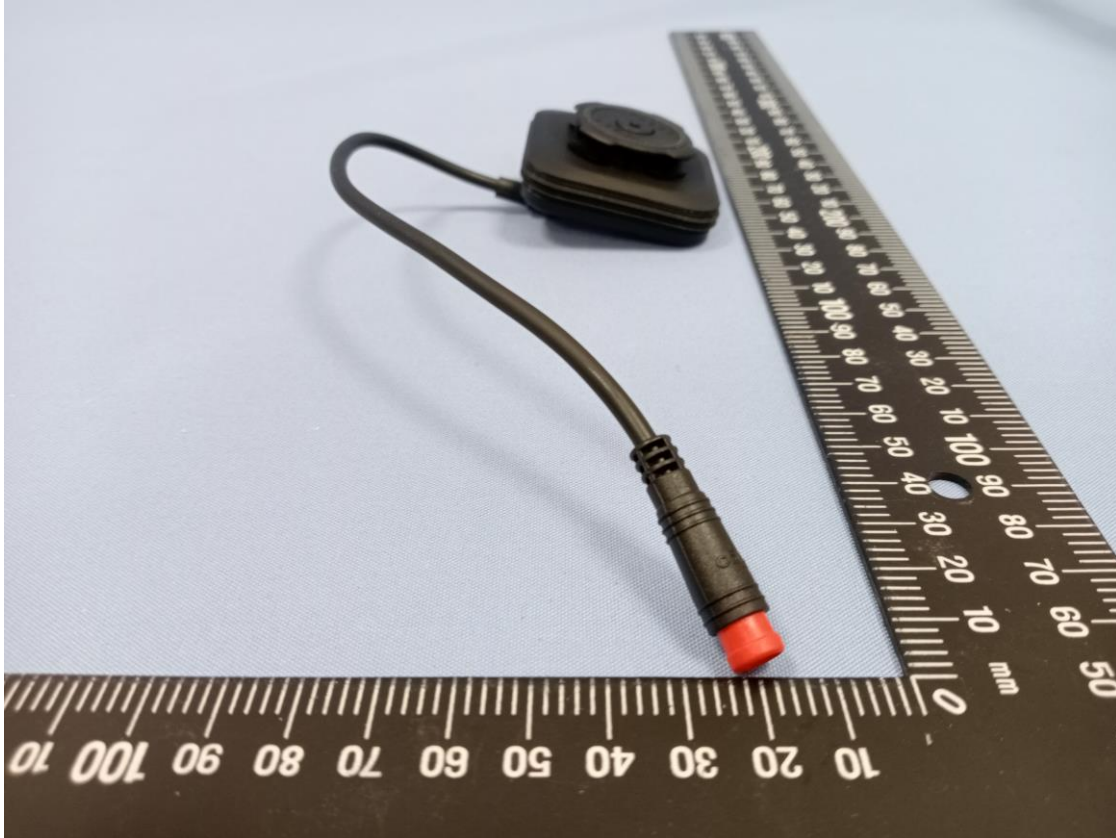


CN23UHCQ (P15C-WPC) 001  
CN23UHCQ (FCC-WPTRFEXP) 001  
CN232Q9F (RSS216-WPC) 001  
CN232Q9F (ISED-WPTRFEXP) 001

Page 4 of 17

Product: OEM Wireless Charger 12V 1.8A Input(QL-5289), OEM Wireless Charger  
12V 1.0A Input(QL-5290)

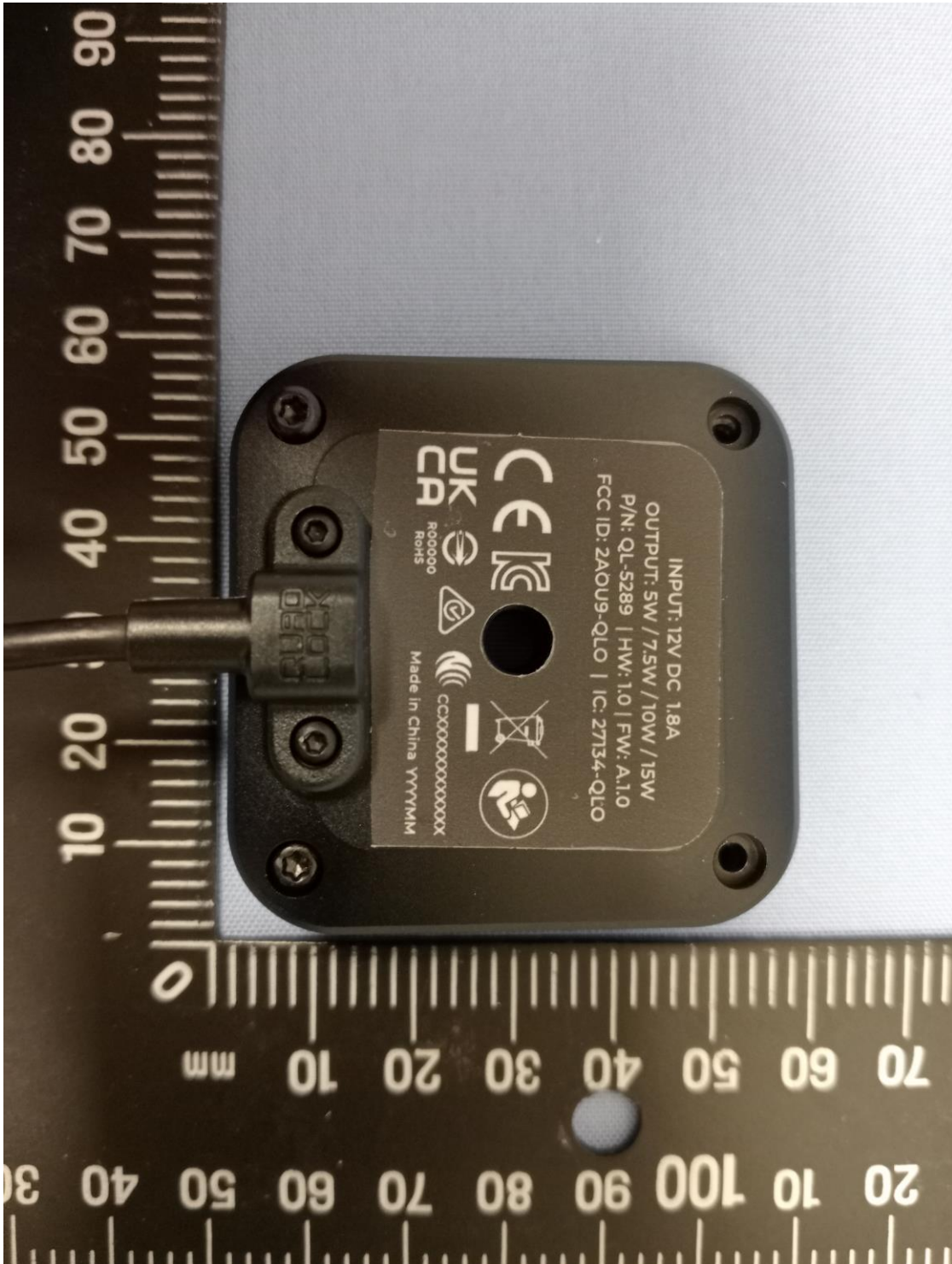
Type Identification: QL-5289, QL-5290



CN23UHCQ (P15C-WPC) 001  
CN23UHCQ (FCC-WPTRFEXP) 001  
CN232Q9F (RSS216-WPC) 001  
CN232Q9F (ISED-WPTRFEXP) 001

Product: OEM Wireless Charger 12V 1.8A Input(QL-5289), OEM Wireless Charger 12V 1.0A Input(QL-5290)

Type Identification: QL-5289, QL-5290

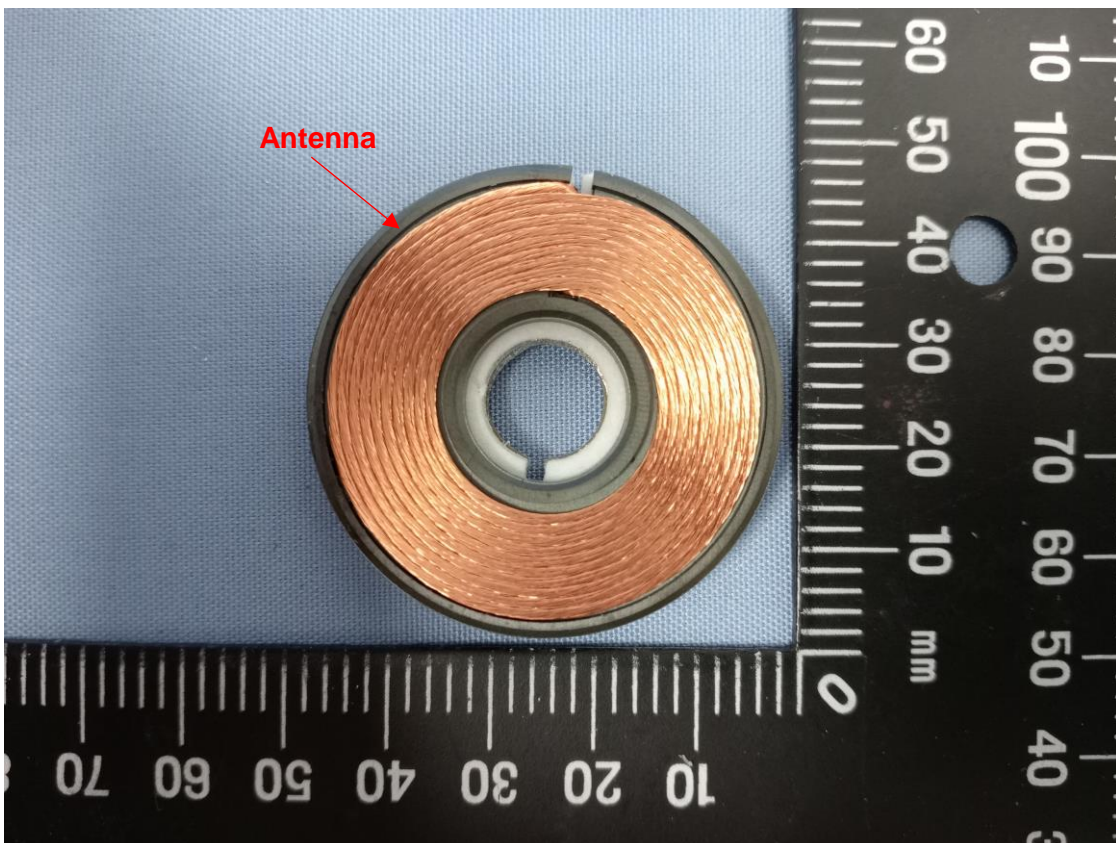
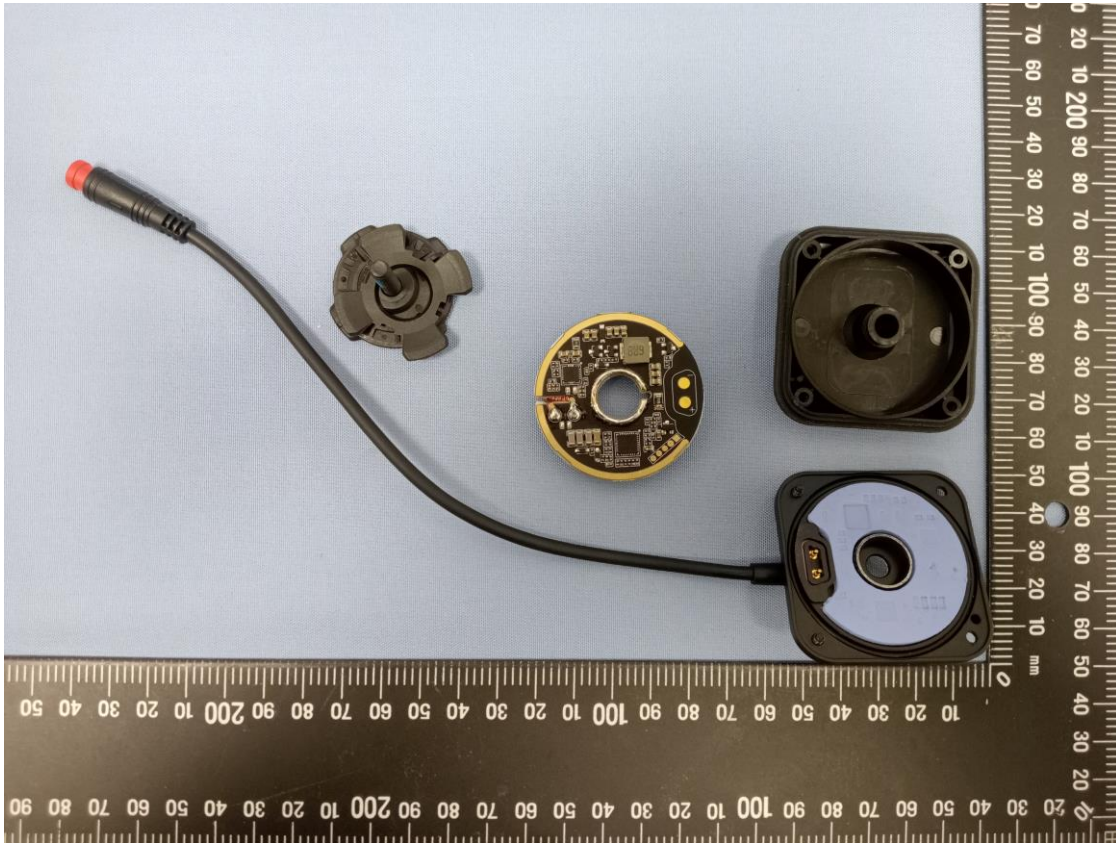




CN23UHCQ (P15C-WPC) 001  
CN23UHCQ (FCC-WPTRFEXP) 001  
CN232Q9F (RSS216-WPC) 001  
CN232Q9F (ISED-WPTRFEXP) 001

Product: OEM Wireless Charger 12V 1.8A Input(QL-5289), OEM Wireless Charger 12V 1.0A Input(QL-5290)

Type Identification: QL-5289, QL-5290

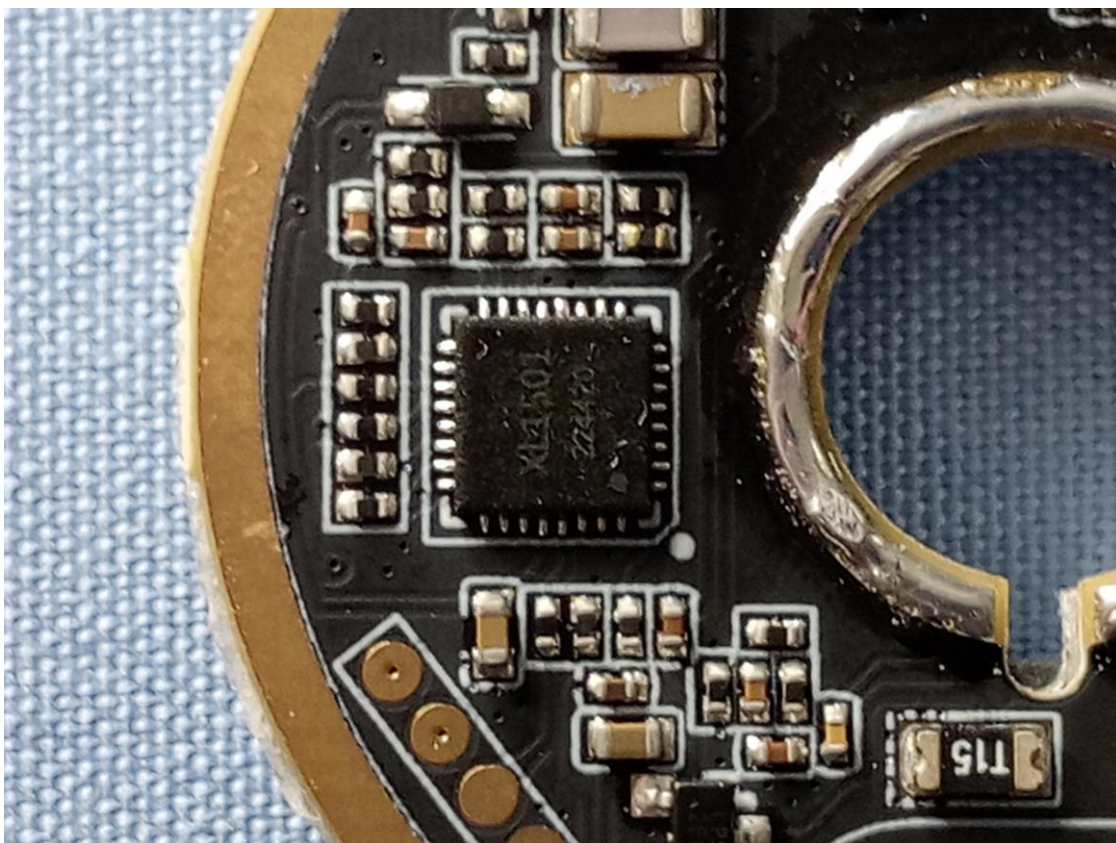
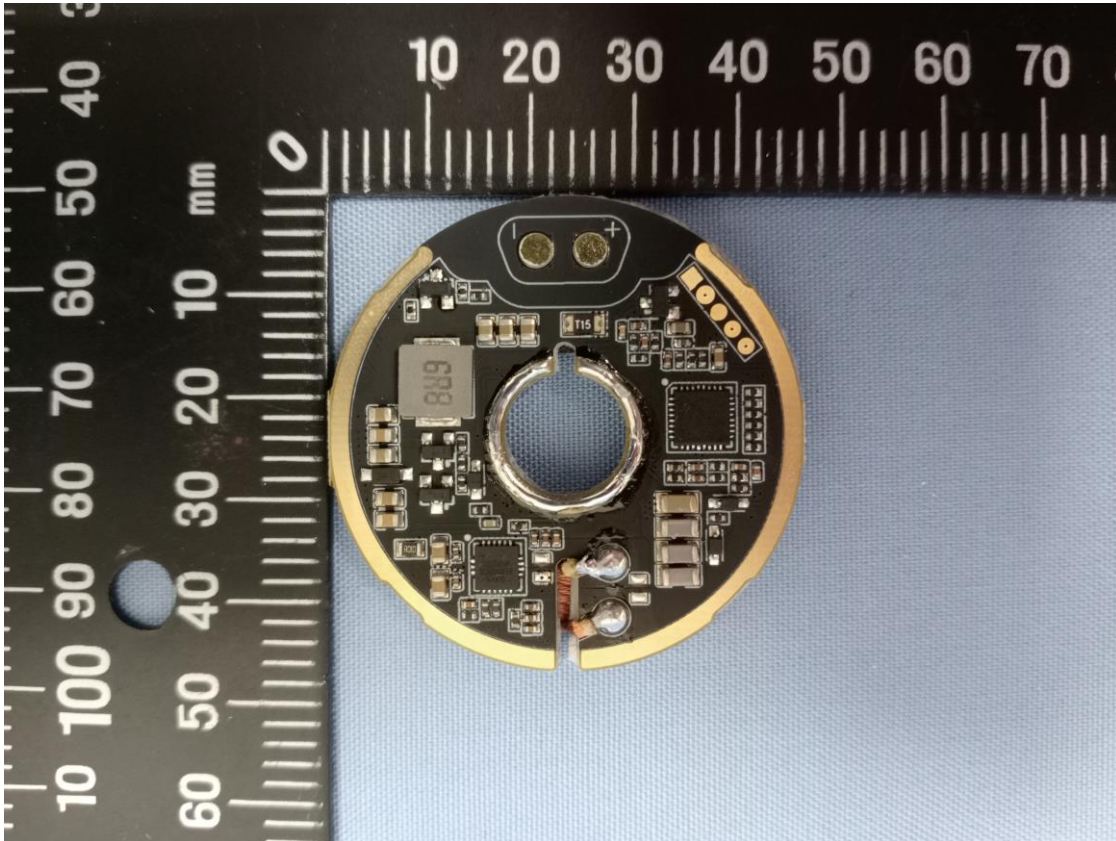




CN23UHCQ (P15C-WPC) 001  
CN23UHCQ (FCC-WPTRFEXP) 001  
CN232Q9F (RSS216-WPC) 001  
CN232Q9F (ISED-WPTRFEXP) 001

Product: OEM Wireless Charger 12V 1.8A Input(QL-5289), OEM Wireless Charger 12V 1.0A Input(QL-5290)

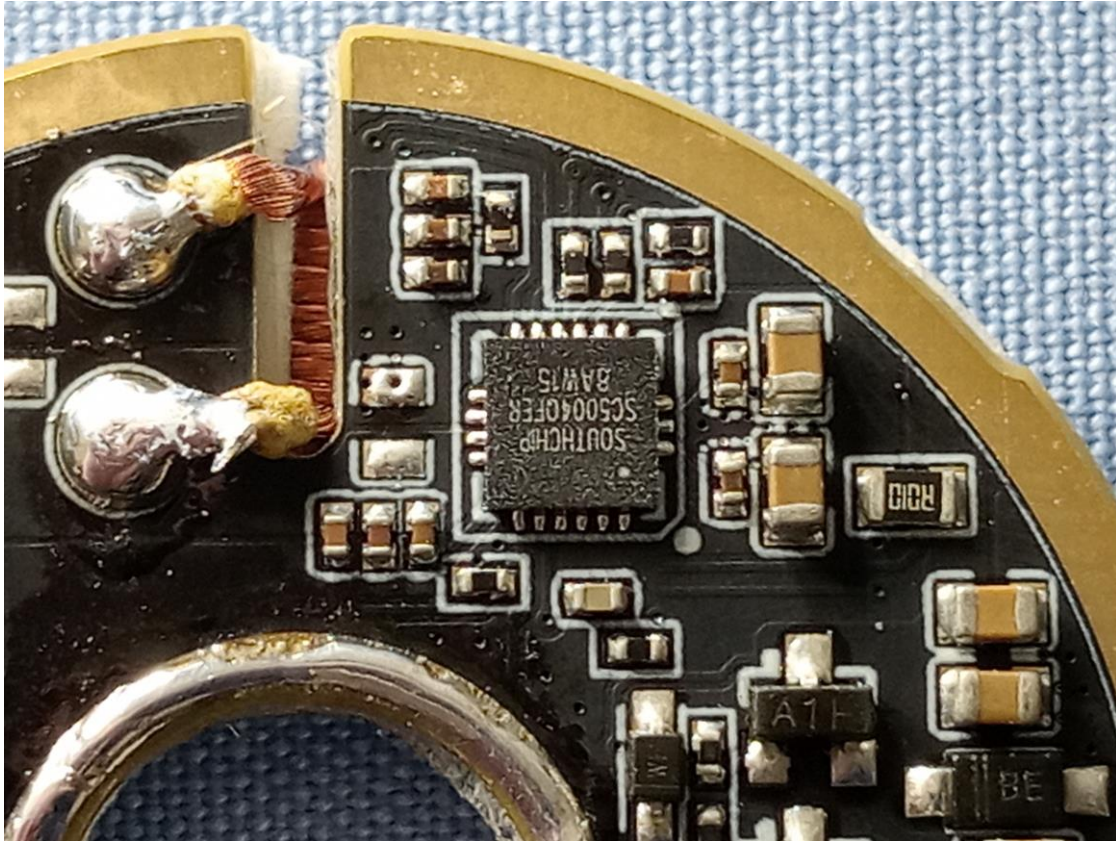
Type Identification: QL-5289, QL-5290



CN23UHCQ (P15C-WPC) 001  
CN23UHCQ (FCC-WPTRFEXP) 001  
CN232Q9F (RSS216-WPC) 001  
CN232Q9F (ISED-WPTRFEXP) 001

Product: OEM Wireless Charger 12V 1.8A Input(QL-5289), OEM Wireless Charger 12V 1.0A Input(QL-5290)

Type Identification: QL-5289, QL-5290





CN23UHCQ (P15C-WPC) 001  
CN23UHCQ (FCC-WPTRFEXP) 001  
CN232Q9F (RSS216-WPC) 001  
CN232Q9F (ISED-WPTRFEXP) 001

Product: OEM Wireless Charger 12V 1.8A Input(QL-5289), OEM Wireless Charger 12V 1.0A Input(QL-5290)

Type Identification: QL-5289, QL-5290

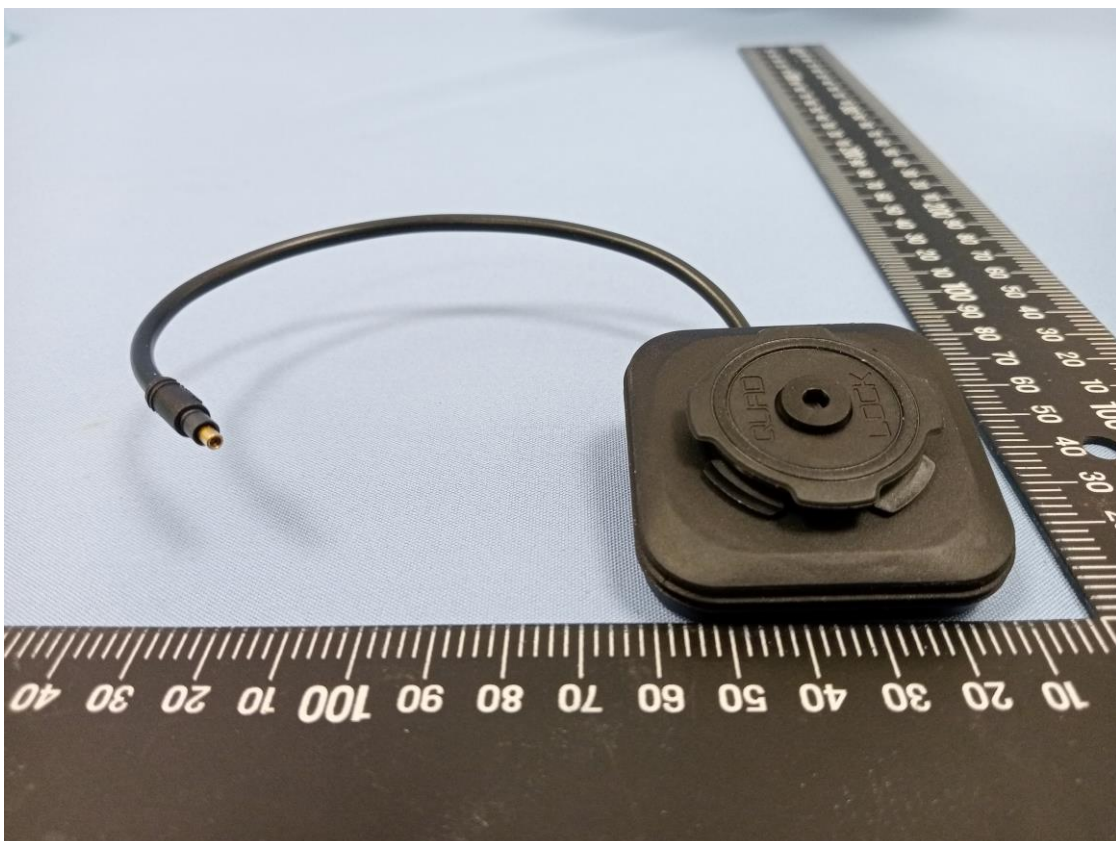
QL-5290



CN23UHCQ (P15C-WPC) 001  
CN23UHCQ (FCC-WPTRFEXP) 001  
CN232Q9F (RSS216-WPC) 001  
CN232Q9F (ISED-WPTRFEXP) 001

Product: OEM Wireless Charger 12V 1.8A Input(QL-5289), OEM Wireless Charger 12V 1.0A Input(QL-5290)

Type Identification: QL-5289, QL-5290

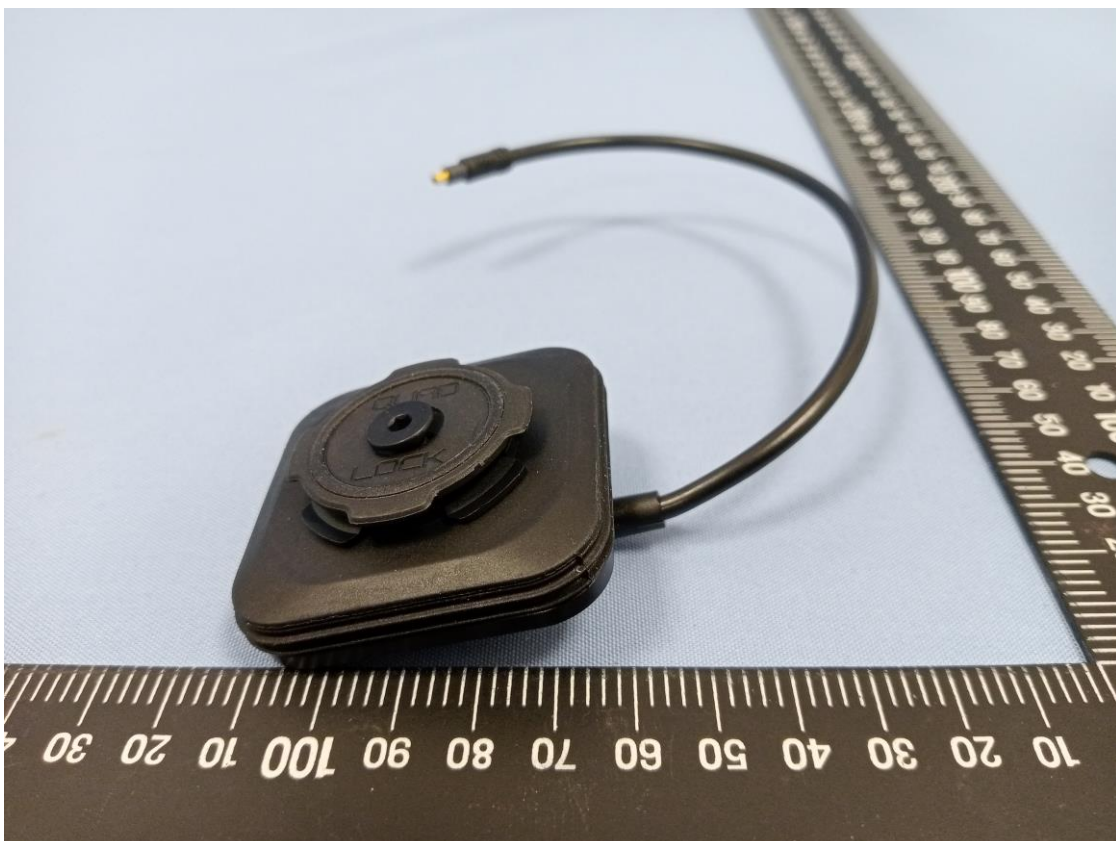
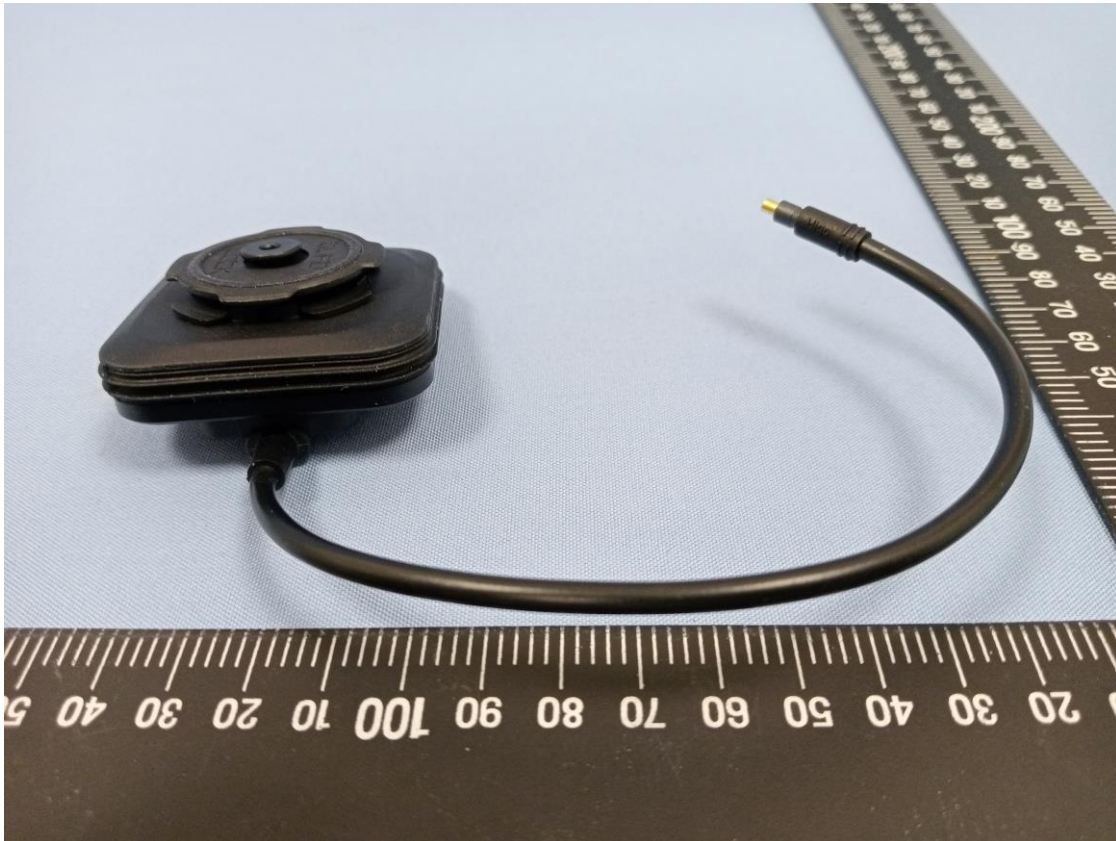




CN23UHCQ (P15C-WPC) 001  
CN23UHCQ (FCC-WPTRFEXP) 001  
CN232Q9F (RSS216-WPC) 001  
CN232Q9F (ISED-WPTRFEXP) 001

Product: OEM Wireless Charger 12V 1.8A Input(QL-5289), OEM Wireless Charger 12V 1.0A Input(QL-5290)

Type Identification: QL-5289, QL-5290

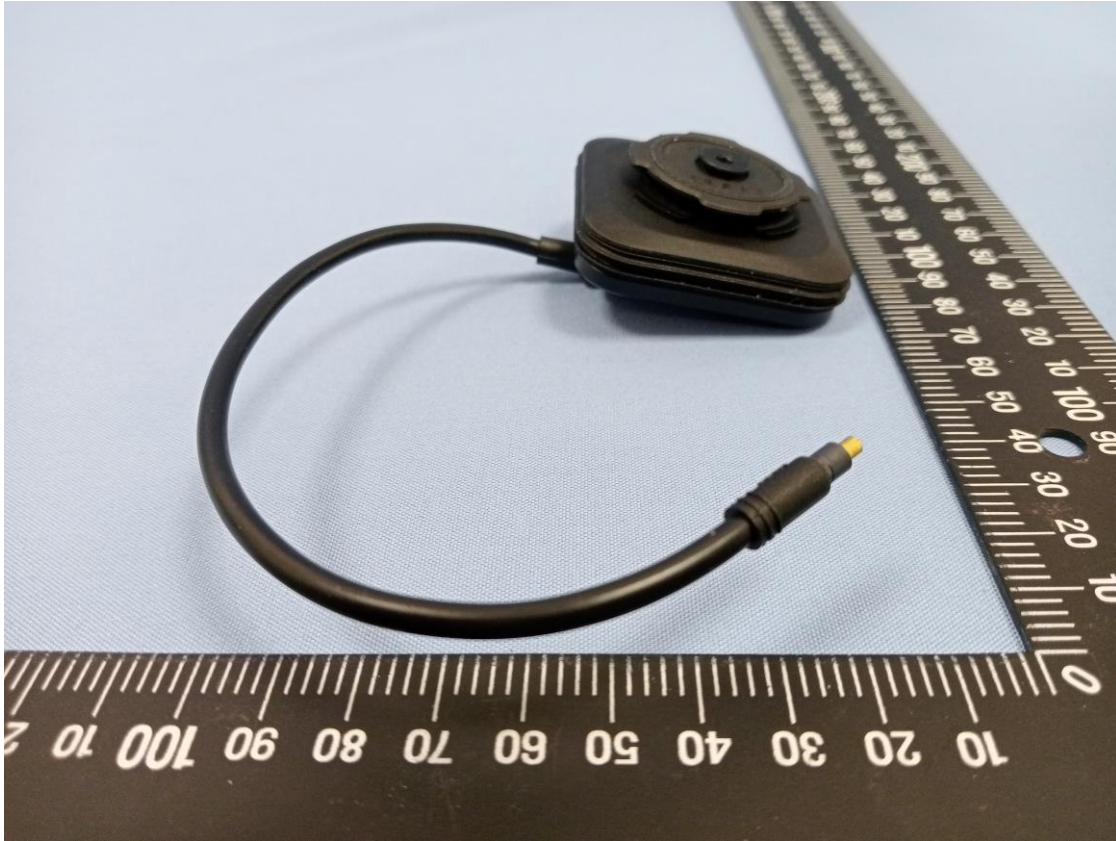


CN23UHCQ (P15C-WPC) 001  
CN23UHCQ (FCC-WPTRFEXP) 001  
CN232Q9F (RSS216-WPC) 001  
CN232Q9F (ISED-WPTRFEXP) 001

Page 12 of 17

Product: OEM Wireless Charger 12V 1.8A Input(QL-5289), OEM Wireless Charger  
12V 1.0A Input(QL-5290)

Type Identification: QL-5289, QL-5290





CN23UHCQ (P15C-WPC) 001  
CN23UHCQ (FCC-WPTRFEXP) 001  
CN232Q9F (RSS216-WPC) 001  
CN232Q9F (ISED-WPTRFEXP) 001

Page 13 of 17

Product: OEM Wireless Charger 12V 1.8A Input(QL-5289), OEM Wireless Charger 12V 1.0A Input(QL-5290)

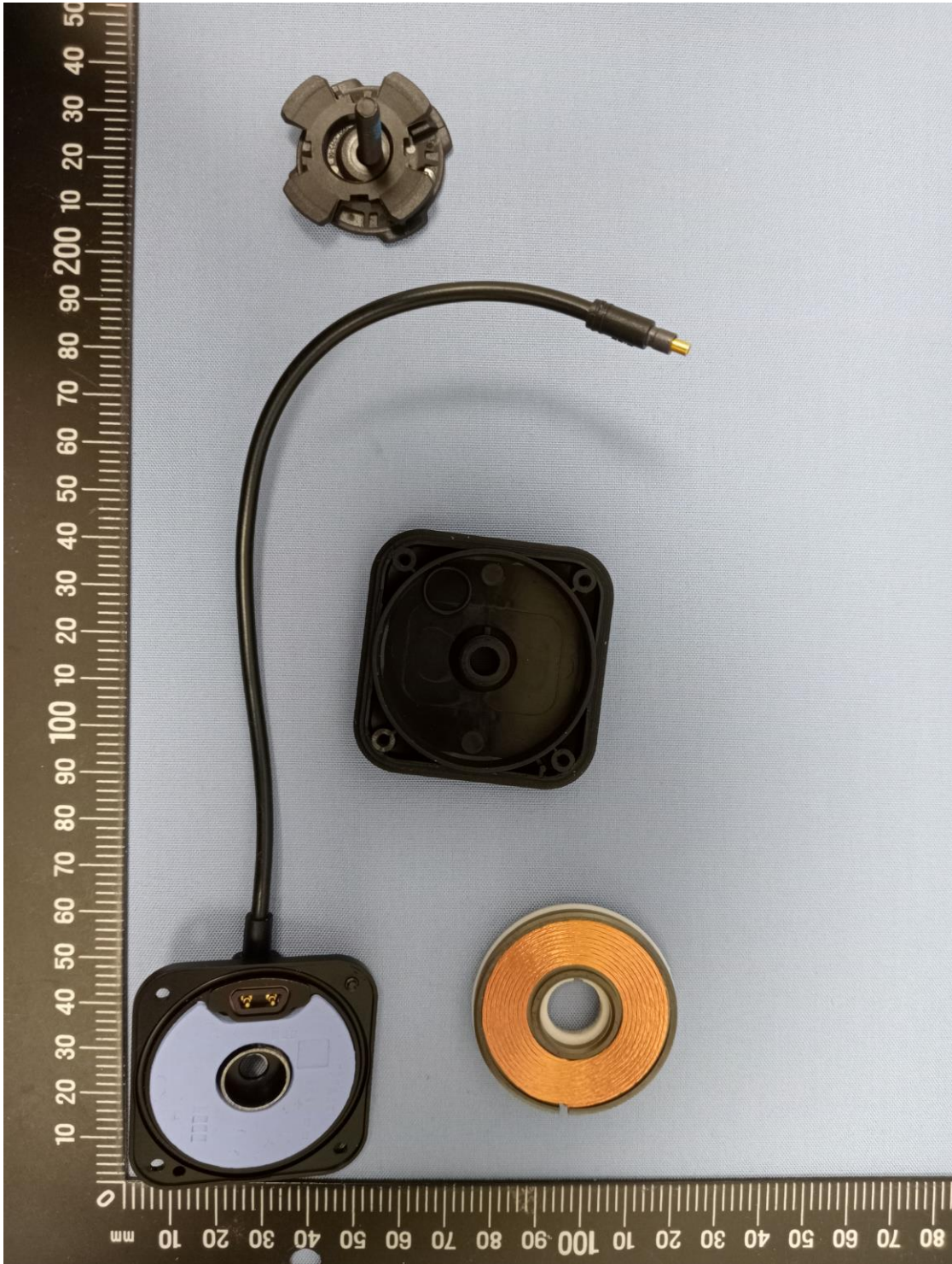
Type Identification: QL-5289, QL-5290



CN23UHCQ (P15C-WPC) 001  
CN23UHCQ (FCC-WPTRFEXP) 001  
CN232Q9F (RSS216-WPC) 001  
CN232Q9F (ISED-WPTRFEXP) 001

Product: OEM Wireless Charger 12V 1.8A Input(QL-5289), OEM Wireless Charger 12V 1.0A Input(QL-5290)

Type Identification: QL-5289, QL-5290

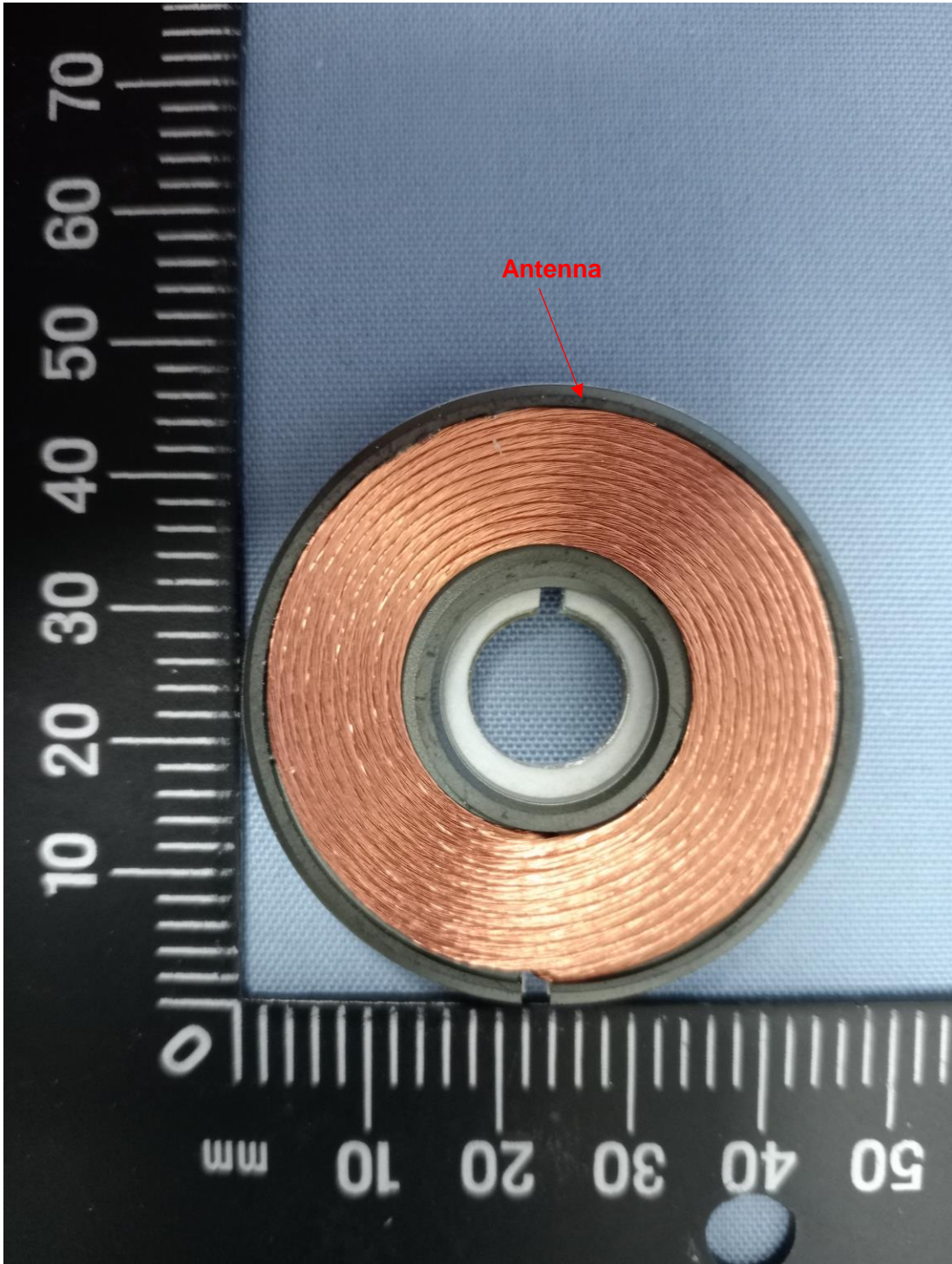




CN23UHCQ (P15C-WPC) 001  
CN23UHCQ (FCC-WPTRFEXP) 001  
CN232Q9F (RSS216-WPC) 001  
CN232Q9F (ISED-WPTRFEXP) 001

Product: OEM Wireless Charger 12V 1.8A Input(QL-5289), OEM Wireless Charger 12V 1.0A Input(QL-5290)

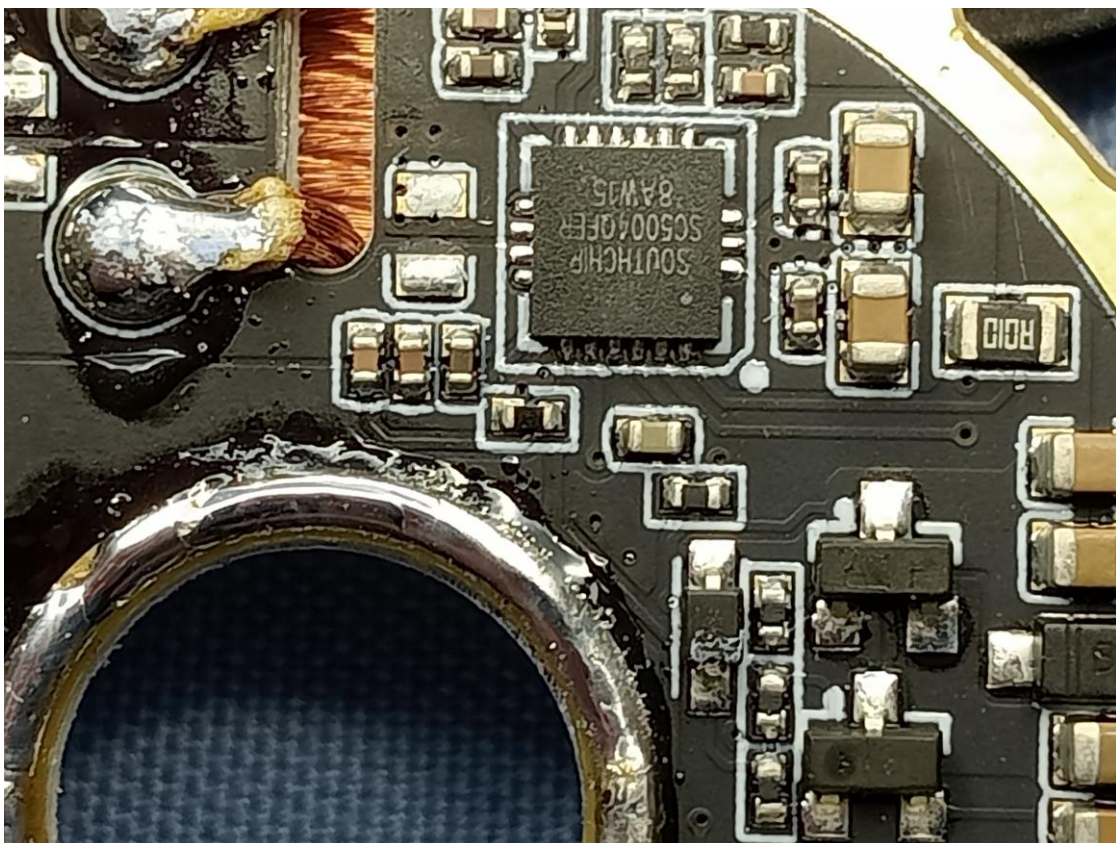
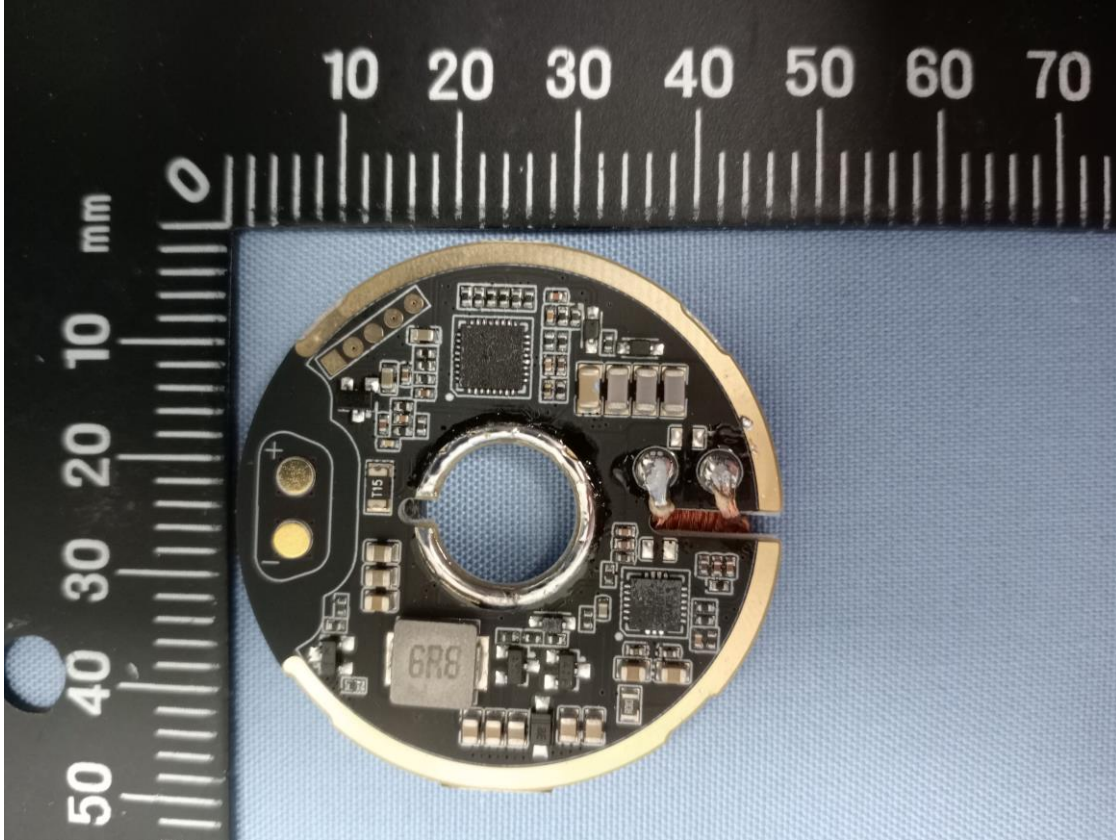
Type Identification: QL-5289, QL-5290



CN23UHCQ (P15C-WPC) 001  
CN23UHCQ (FCC-WPTRFEXP) 001  
CN232Q9F (RSS216-WPC) 001  
CN232Q9F (ISED-WPTRFEXP) 001

Product: OEM Wireless Charger 12V 1.8A Input(QL-5289), OEM Wireless Charger 12V 1.0A Input(QL-5290)

Type Identification: QL-5289, QL-5290





CN23UHCQ (P15C-WPC) 001  
CN23UHCQ (FCC-WPTRFEXP) 001  
CN232Q9F (RSS216-WPC) 001  
CN232Q9F (ISED-WPTRFEXP) 001

Page 17 of 17

Product: OEM Wireless Charger 12V 1.8A Input(QL-5289), OEM Wireless Charger 12V 1.0A Input(QL-5290)

Type Identification: QL-5289, QL-5290

