

APPENDIX 3: Photographs of test setup

Conducted Emission

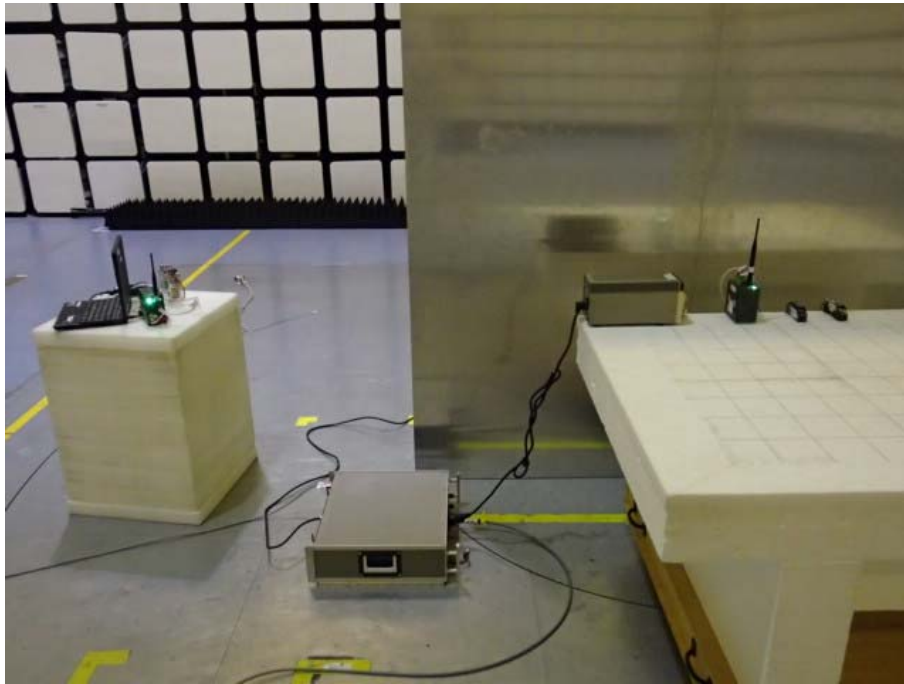


Photo 1

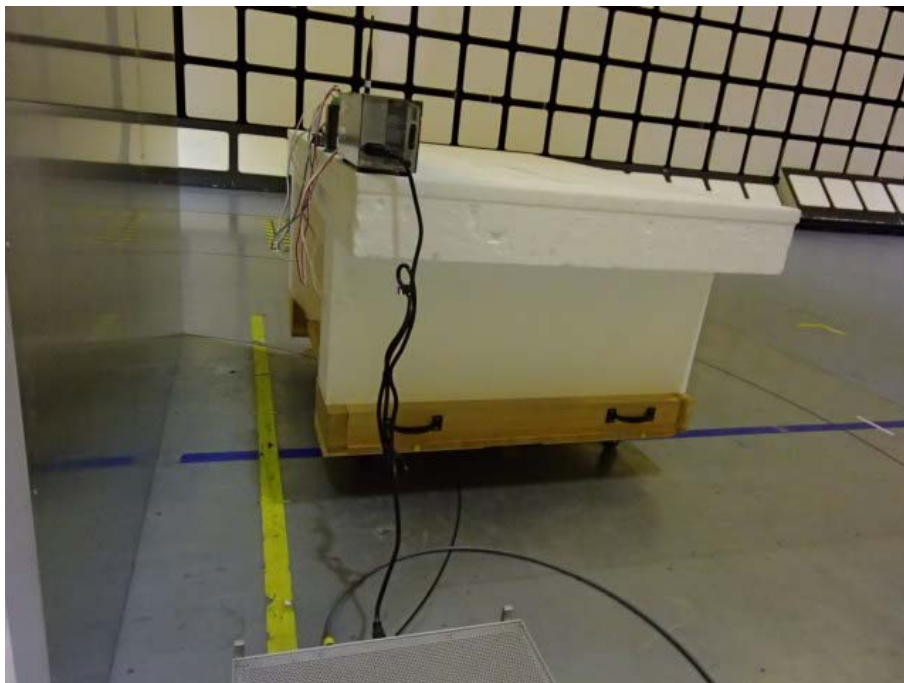


Photo 2

UL Japan, Inc.

Ise EMC Lab.

4383-326 Asama-cho, Ise-shi, Mie-ken 516-0021 JAPAN

Telephone : +81 596 24 8999

Facsimile : +81 596 24 8124

Radiated Emission
(Below 1GHz)



Photo 1

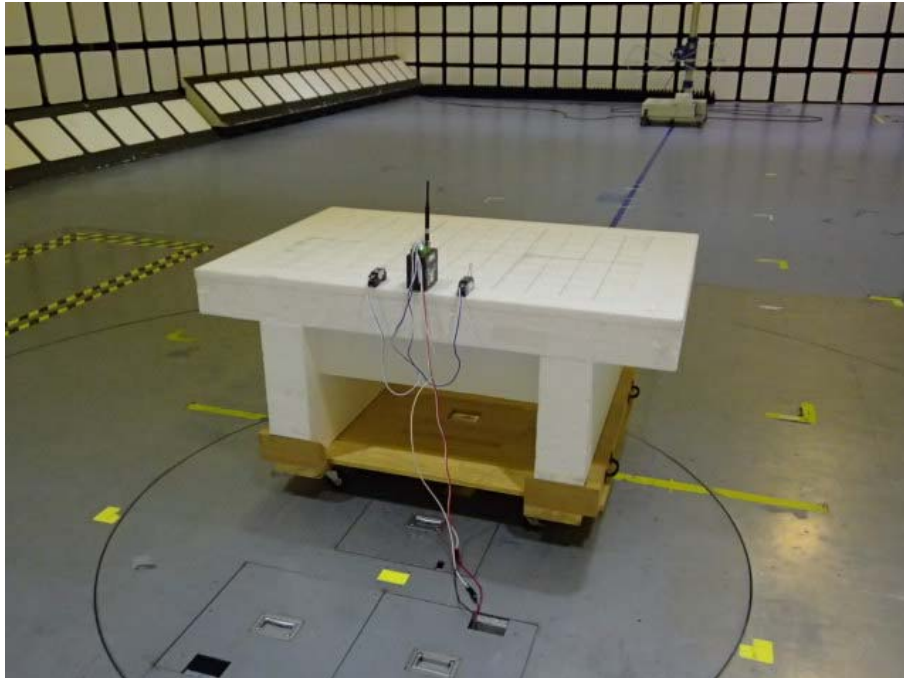


Photo 2

UL Japan, Inc.

Ise EMC Lab.

4383-326 Asama-cho, Ise-shi, Mie-ken 516-0021 JAPAN

Telephone : +81 596 24 8999

Facsimile : +81 596 24 8124

Radiated Emission
(Above 1GHz)

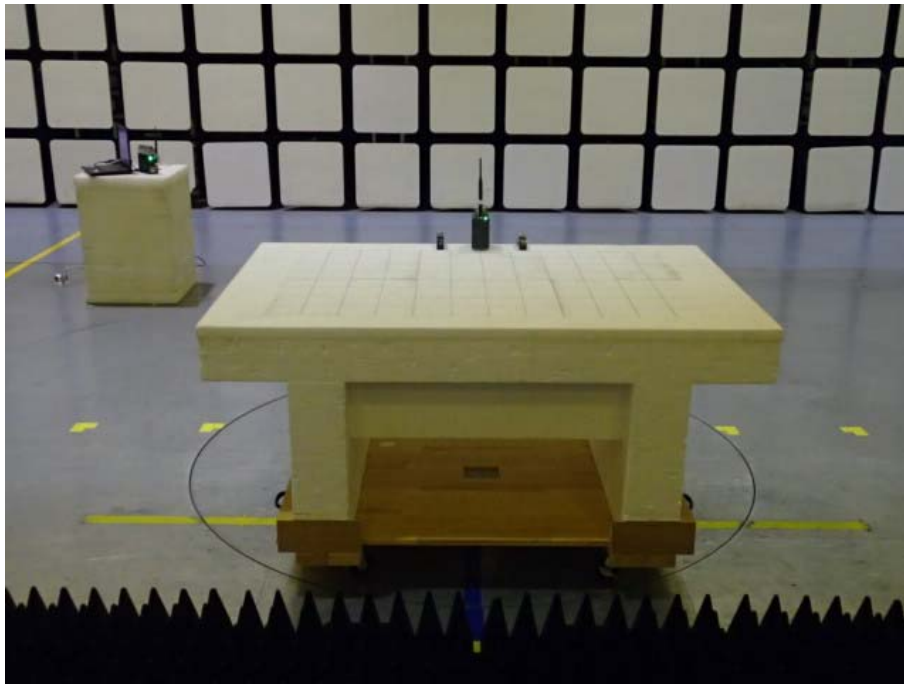


Photo 1

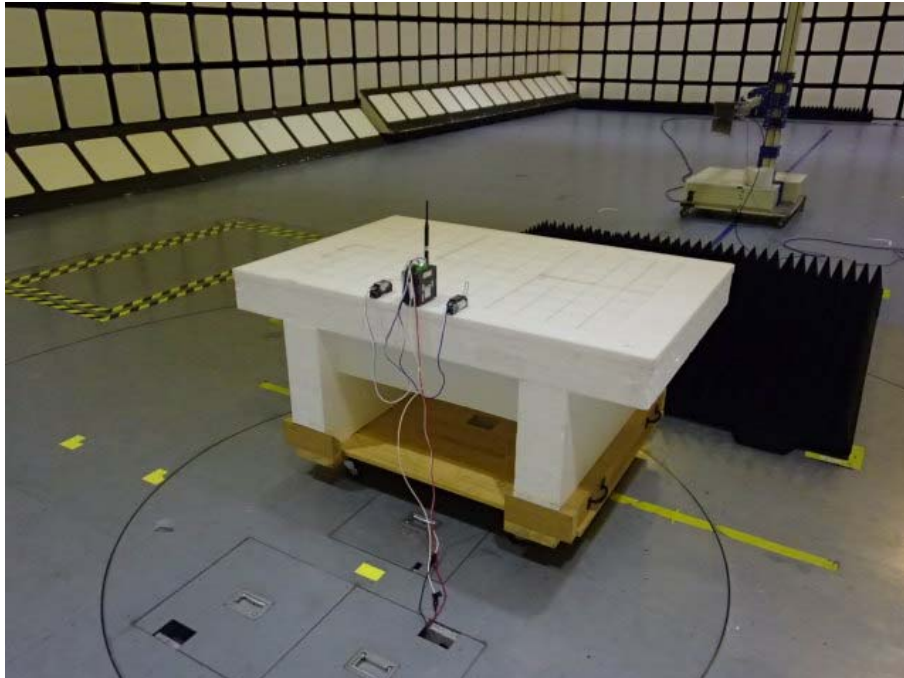


Photo 2

UL Japan, Inc.

Ise EMC Lab.

4383-326 Asama-cho, Ise-shi, Mie-ken 516-0021 JAPAN

Telephone : +81 596 24 8999

Facsimile : +81 596 24 8124

Worst Case Position

(Horizontal: EUT:Y-axis, Antenna:Sleeve Y-0 deg
Vertical: EUT:Y-axis, Antenna:Sleeve Y-0 deg)

**EUT
X-axis**



**rooftop antenna
X-axis**



Y-axis



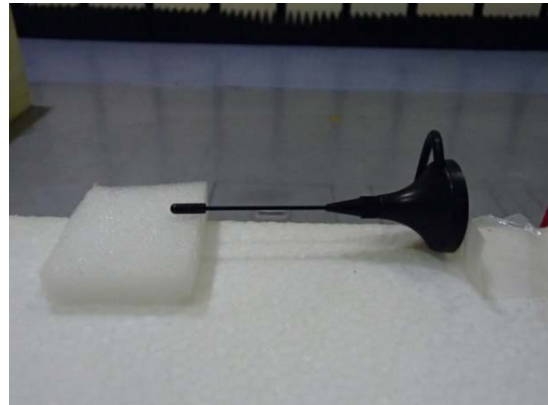
Y-axis



Z-axis



Z-axis

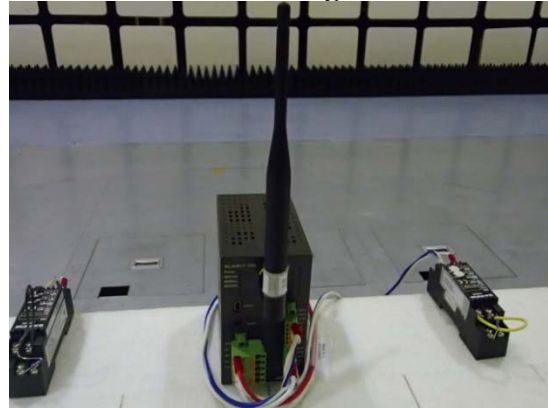


Worst Case Position
Sleeve antenna

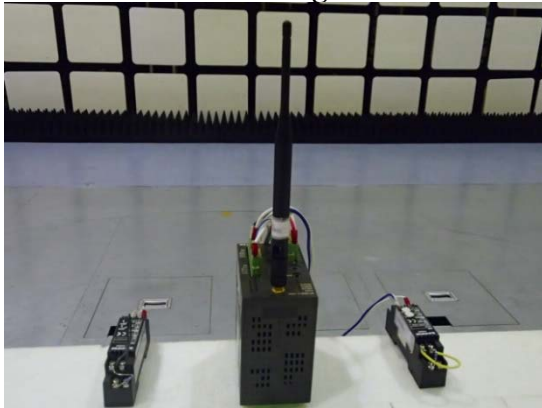
X-0 deg



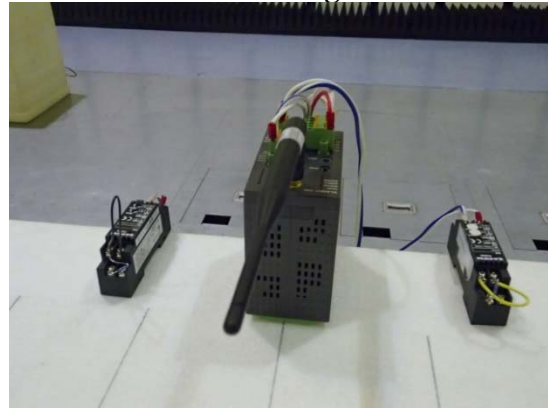
X-90 deg



Y-0 deg



Y-90 deg



Z-0 deg



Z-90 deg



End of Report