

WiFi Smart Devices

User Manual



Specification:
Power Supply: AC 100V~125V, 50/60Hz
Load Current: 10A (Max)
WiFi Standard: 2.4G 802.11 b/g/n
Operation Temperature: -20°C~50°C

Download and install APP:
Scan the QR code to download App



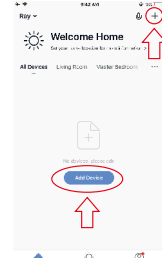
Or search "Smart Life" in either Apple Store or Google Play to install the App.

»Run the APP
»Login with your account & password
For the first time using, you have to register a new account
Please make sure the smart socket and your phone covered by a same WiFi router.

1

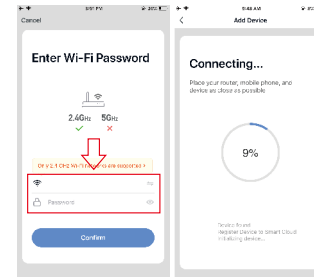
Adding a New Device in Quick Connection

>> Open the APP and click "Add Device" or "+" to add device, select "Electrical Engineering".
>> Select "Socket(Wi-Fi)



»Confirm indicator rapidly blink
Hold the button for 5 seconds until the indicator light rapidly blinks (2 times per second). If not, try again.
»Click "Confirm indicator rapidly Blink", type in Wi-Fi password and click "Confirm".
Once the configuration is completed, the indicator light will stop flickering.

2

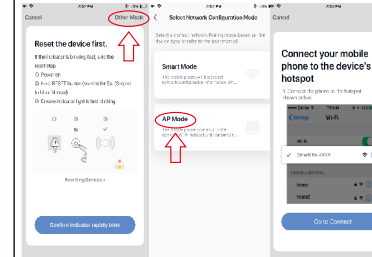


How can you make the indicator rapidly blink?
The light needs to be set to flash rapidly. Please follow the steps below to finish setting.
Step 1: Power on the plug. Power off after 10s and then power on.
Step 2: Hold the reset button for 5s until the indicator light is rapidly flashing

3

Adding a New Device in AP Mode

>> Open the APP and click "Add Device" or "+" to add device, select "Electrical Engineering".
>> Select "Socket(Wi-Fi)
>> Click "Other Mode" ----> Click "AP Mode"

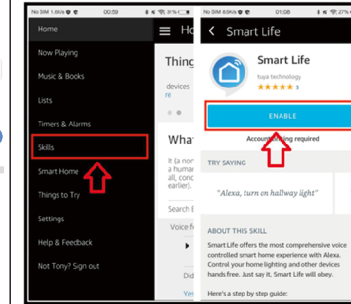


»Confirm indicator slowly blink
Hold the power button for 5 seconds until the indicator light is slowly flashing (1 times every 3 seconds). If not, try again.
»Click "Confirm indicator slowly blink", type in Wi-Fi password and click "Confirm".
>> Click "go to connect", connect to the Wifi. "SmartLife-XXXX". Then back to the APP.
Once the configuration is completed, the indicator light will stop flickering.

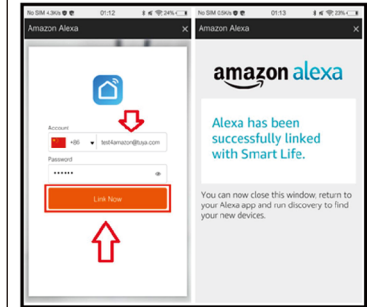
4

How to sync with Alexa

1. Link Smart Life account to Alexa
»Go to Home menu on Alexa App.
»Select "Skills" in Home menu, search "Smart Life" on search window, select "Smart Life" and tap "Enable" to enable the Smart Life skill.
»In link page, input your Smart Life account & password and tap "Link Now" to link your Smart Life account. Wait until "Alexa has been successful linked with Smart Life" shows up.



5



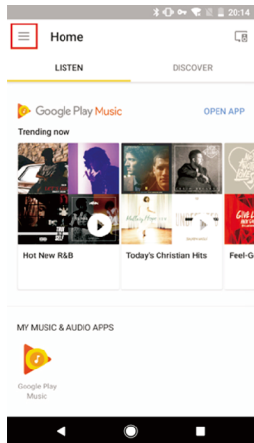
Control smart devices through Alexa

»Echo needs to discover your smart devices before it controls them. You can say "Alexa, discover devices" to Alexa. Alexa will discover devices in about 20 seconds.
Now you can control your smart devices through Alexa.

Note:
»If you change the device's name on Smart Life App, Alexa must re-discover it before you control them.
»You can set up groups on Alexa App to control.

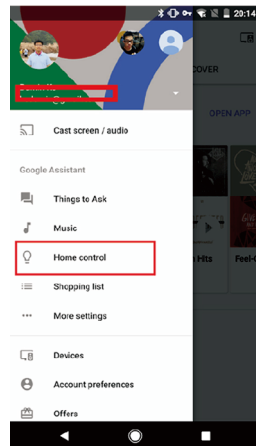
6

Using Google Home to control smart devices



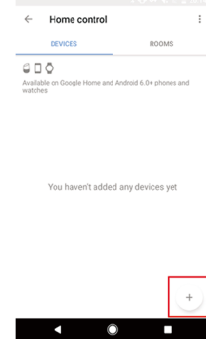
7

1. Tap "Home Control" in the hamburger menu on the Google Home app's home page.



8

2. Then tap "+".



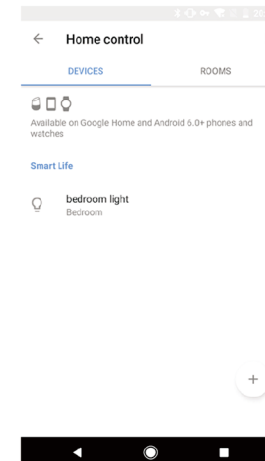
9

5. After you assign rooms for devices .



10

6. Your devices will be listed in the Home Control page.



11

FAQ

- 1.Please check whether device is powered one;
- 2.Whether phone is connected via Wi-Fi;
- 3.Whether device is ready for configuration. To get the device ready before configuration, normally you can manually press on the device to get it ready.Please refer to "Product Instructions" or Device Reset Instruction for details.
Notice Each time to add device, reset Wi-Fi to get Device ready for configuration and make sure router is working properly.
4. Check routers or related: If router is dual-band router, select 2.4GHz network and add device. you also need to enable router's broadcasting function.
Set up wireless router: Set encryption method as WPA2-PSK and authorization type as AES, or set both as auto. Wireless mode cannot be 11 n only. Don't use Chinese to name router Wi-Fi. To stay Strong Wi-Fi signal, please keep device and touter within certain distance.
Whether connected devices have reached the Maximum number of router's connection. If so, please try by turning off the Wi-Fi connection of some device.
Router's wireless MAC filtering function is enabled. Remove the device from the filter list and make sure that router is not prohibiting device from connection.
5. Make sure the password entered is APP is correct when adding new device.

12

Warning:

1. Indoor use only.
2. Plug in fully to the wall outlet while using.
3. Do not insert a conductor or other tools to the socket hole.
4. If there is radio frequency interference, it might affect the operation.
5. Do not use in bathroom and other damp locations.
6. Please ensure the security of the electricity, resistive load current can't be higher than 10A.
7. Please keep the device out of the reach of children to avoid electric shock.
8. Confirm that outlet, smart phone and router are as close as possible to each other.
9. Make sure the network of the router and smart phone are unblocked.

13

FCC Caution:

This device complies with part 15 of the FCC Rules. Operation is subject to the following two conditions: (1) This device may not cause harmful interference, and (2) this device must accept any interference received, including interference that may cause undesired operation.

Any Changes or modifications not expressly approved by the party responsible for compliance could void the user's authority to operate the equipment.

Note: This equipment has been tested and found to comply with the limits for a Class B digital device, pursuant to part 15 of the FCC Rules. These limits are designed to provide reasonable protection against harmful interference in a residential installation. This equipment generates uses and can radiate radio frequency energy and, if not installed and used in accordance with the instructions, may cause harmful interference to radio communications. However, there is no guarantee that interference will not occur in a particular installation. If this equipment does cause harmful interference to radio or television reception, which can be determined by turning the equipment off and on, the user is encouraged to try to correct the interference by one or more of the following measures:

- Reorient or relocate the receiving antenna.
- Increase the separation between the equipment and receiver.
- Connect the equipment into an outlet on a circuit different from that to which the receiver is connected.
- Consult the dealer or an experienced radio/TV technician for help.

This equipment complies with FCC radiation exposure limits set forth for an uncontrolled environment. This equipment should be installed and operated with minimum distance 20cm between the radiator & your body.