

**USER MANUAL FOR Matter Smart Plug** ..... 1ST

**1. PRODUCT DESCRIPTION** ..... 3RD

1.1 BASIC PRODUCT FUNCTIONS ..... 3RD

**2. SET UP YOUR DEVICE VIA MATTER** ..... 4TH

2.1. ADD TO ALEXA VIA MATTER ..... 4TH

2.2. ADD TO APPLE VIA MATTER ..... 9TH

2.3. ADD TO GOOGLE VIA MATTER ..... 15TH

2.4. ADD TO SAMSUNG VIA MATTER ..... 21ST

**3. PLUG CONTROL** ..... 37TH

3.1. APP CONTROL ..... 37TH

3.2. VOICE CONTROL ..... 39TH

**4. PLUG SHARING** ..... 40TH

4.1. SHARING ALEXA WITH OTHER ECOSYSTEMS ..... 40TH

4.2. SHARING APPLE WITH OTHER ECOSYSTEMS ..... 42ND

4.3. SHARING GOOGLE WITH OTHER ECOSYSTEMS ..... 44TH

4.4. ACCEPTING SHARES FROM OTHER ECOSYSTEMS ..... 46TH

4.5. ACCEPTING SHARES FROM OTHER ECOSYSTEMS ..... 49TH

**5. PRECAUTIONS FOR EACH ECOLOGICAL USE** ..... 50TH

5.1. WHY DOES MY DEVICE FAIL TO DISTRIBUTE THE NETWORK ..... 50TH

5.2. WHY CAN'T MY DEVICE ENTER SHARING AGAIN AFTER I QUIT SHARING ..... 50TH

**1. Product Description**

Smart Plug are developed according to the Matter standard protocol, and have passed CSA's Matter certification. They can be bound and controlled through ecosystem platforms such as Alexa App/Echo, Apple Home App/HomePod Mini, Google Home App/Google Nest Hub and Smartthings App/Samsung Smart home Hub.

**1.1 Basic Product Functions**

**Voice control:** The device can be controlled by voice through Alexa, Siri, Google Assistant, or other devices that have passed Matter certification.

**App control:** Device control can be achieved through Alexa, Apple Home, Google Home, Smartthings or other apps that have already solved the Matter SDK.

**Device reset:** Press and hold the switch button for 5 seconds to reset, with the indicator light flashing 3 times.

**Device pairing:** There is a Matter QR code and an 11-digit short code on each device. To bind a device, you can use the matching App to scan the QR code or enter the 11-digit short code for pairing and binding.

**2. Set Up Your Device Via Matter**

**2.1. Add to Alexa via Matter**

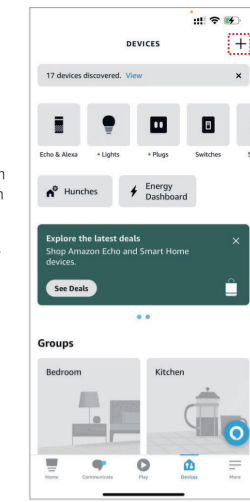
- 1). The version of the Alexa App is greater than or equal to 2.2.491118.0.
- 2). Having a Matter control hub, any of the following devices can be used:

Device	Version
Echo/Echo Dot	5th Gen: Echo Dot, Echo Dot (Gen 5 with Clock) 4th Gen: Echo, Echo Dot, Echo Dot (Gen 4 with Clock) 3rd Gen: Echo, Echo Dot, Echo Dot (Gen 3 with Clock)
Echo Show	3rd Gen: Echo Show 10, Echo Show 15 2nd Gen: Echo Show 8, Echo Show 5 1st Gen: Echo Show, Echo Show 8

**2.1.2 Network Configuration 1: FFS or ZTS non-inductive distribution network**

When you buy a product on Amazon, Amazon scans the QR code on the package, and when the device is powered on, it will automatically connect to a nearby echo.

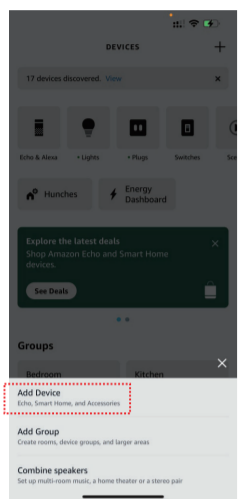
**2.1.3 Network Configuration 2:**  
Step 1: Put the device in pairing mode.  
Step 2: Open the Alexa App, click the "+" icon on the homepage, select "Add Device", then select "Other", select "Connect your Matter Device". On the last screen shown in the figure below, you can choose whether to scan the QR code or enter the pairing code for pairing, and then scan the code or enter the pairing code as needed to complete the adding process.



**User manual for Matter Smart Plug**  
Version: V1.0.5

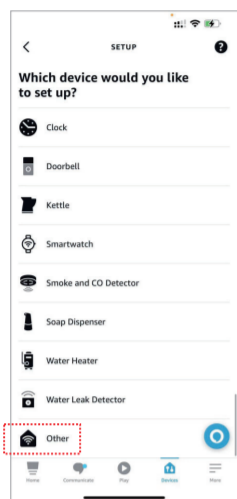
Email: weixianzheng@szsmr.com

1-1st



2

1-2nd

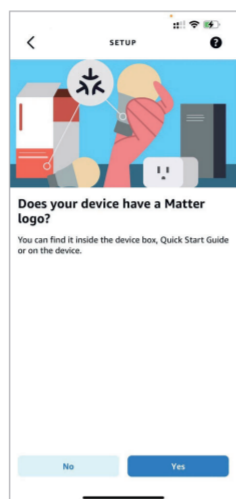


3

2-6th



4



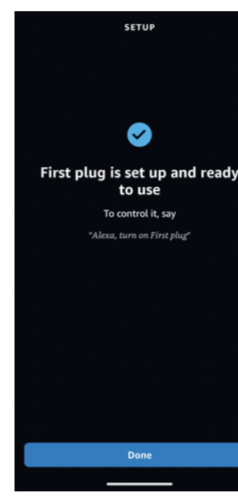
5

2-7th

1-3rd



6



7

2-8th

Once the device is successfully added, return to the device list.

2-4th

**2.2. Add to Apple via Matter**

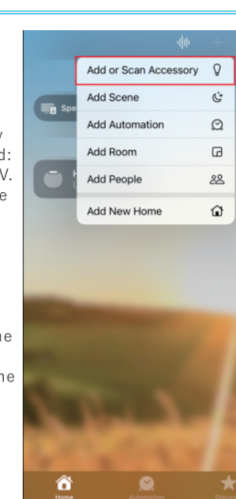
**2.2.1 Check the environment**

- 1). The system version of the Apple phone is greater than or includes version 16.2.
- 2). Having a Matter control hub, any of the following devices can be used: Home Pod, Home Pod mini, Apple TV.
- 3). Join a 2.4G WiFi network, and the WiFi password cannot be blank or a hidden WiFi.

**2.2.2 Network configuration**

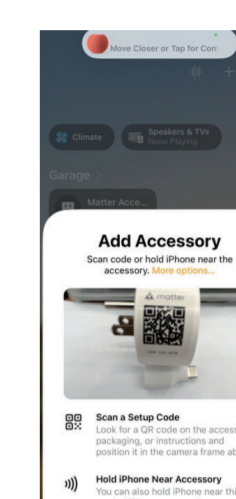
Step 1: Put the device in pairing mode.

Step 2: Open the Home App, click the "+" icon on the homepage, select "Add or Scan Accessory", and use the QR code to scan the device, or use the pairing code for pairing (also need to click "More Options", click "My Accessories" to display it here, and click "Enter Code" to enter the pairing code pairing interface), and then follow the prompts to add it.

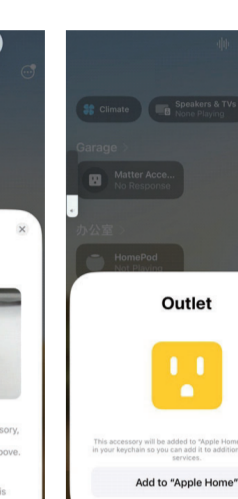


1

2-9th



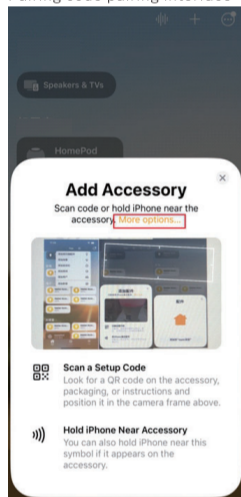
2



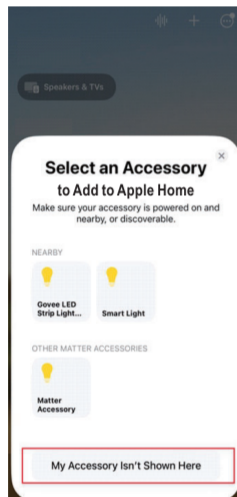
3

2-10th

Pairing code pairing interface:

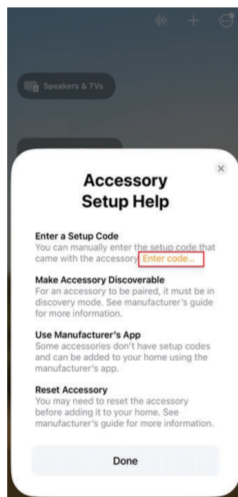


4

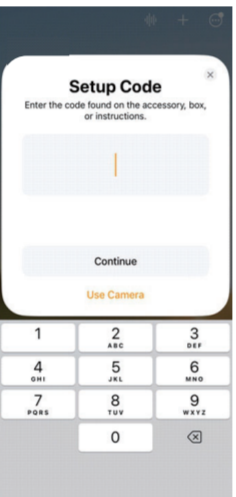


5

2-11st



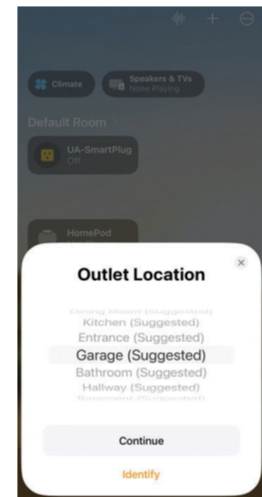
6



7

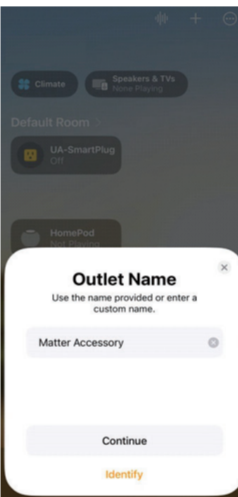
2-12nd

After the device is successfully added, the location of the device and the device name can be changed, as shown in the following figure.

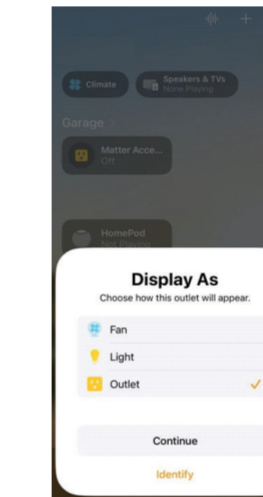


1

2-13rd



2



3

2-14th

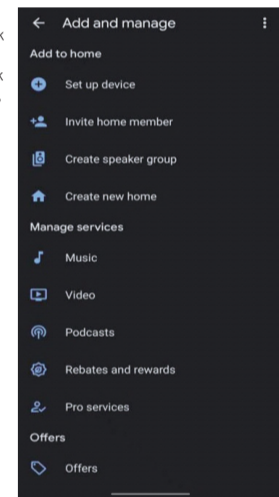


4

**2.3. Add to Google via Matter**

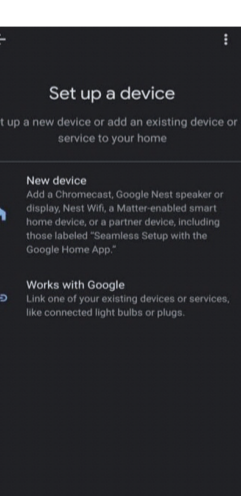
**2.3.1 App Distribution Network**

Step1: Open the Google Home App home page, click "+", click "Set up device" after the jump, select "New device" and press prompt to add a device;



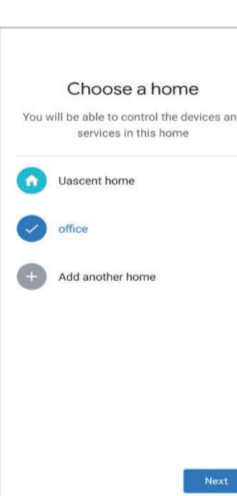
1

2-15th

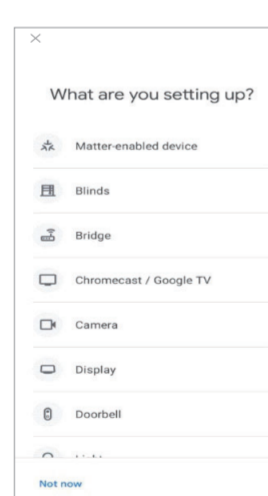


2

2-16th

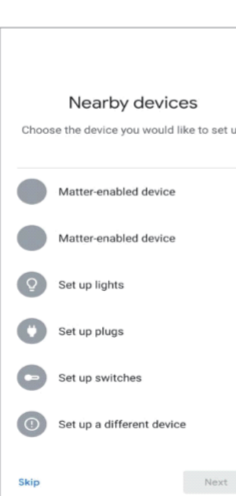


3



4

2-17th

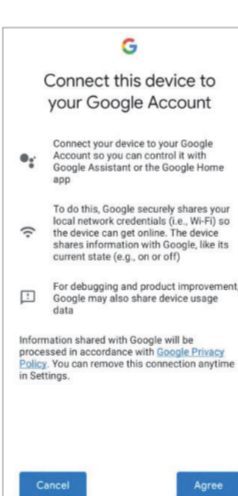


5

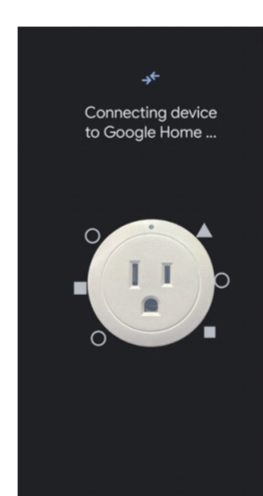


6

2-18th

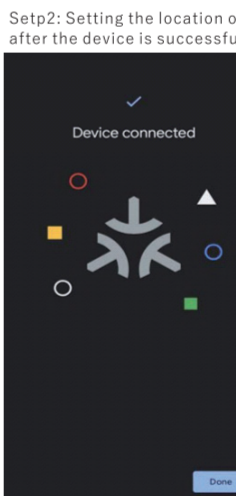


7

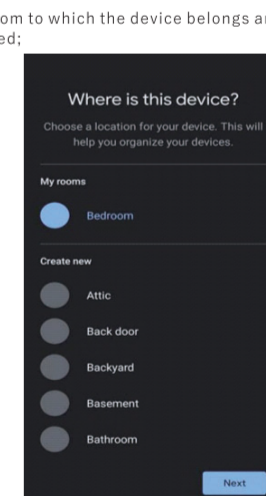


8

2-19th

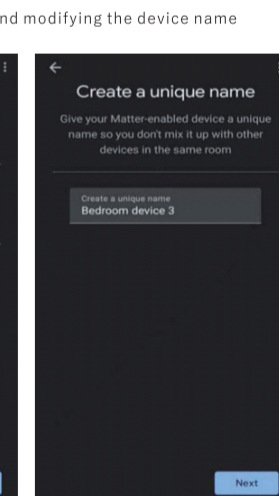


1



2

2-20th



3

**2.4. Add to Samsung via Matter**

**2.4.1 Check the environment**

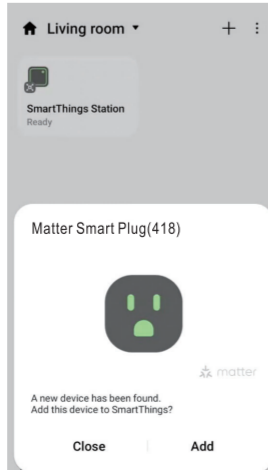
- 1). The version of the Smartthings App is greater than or equal to 1.8.01.22.
- 2). Having a Matter control hub, any of the following devices can be used: Smartthings Station, Smartthings hub.
- 3). Join a 2.4G WiFi network.

**2.4.2 Network configuration**

Step 1: Put the device in pairing mode.

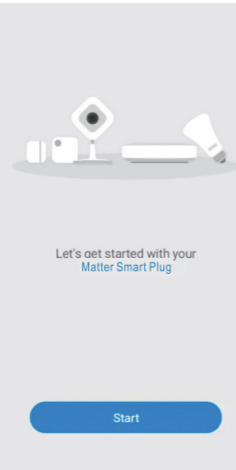
Step 2: Open the Smartthings App, if your phone supports automatic device discovery, you can simply click "Add" to connect. Otherwise, you can click the "+" icon on the Devices page, select "Scan QR code", and use the QR code to scan the device, or use the pairing code for pairing (also need to click "Enter setup code" to enter the pairing code pairing interface), and then follow the prompts to add it.

QR code pairing interface if the device is automatically discovered:

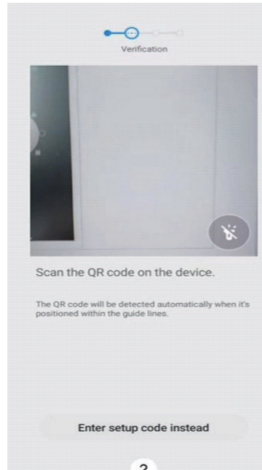


1

2-22nd

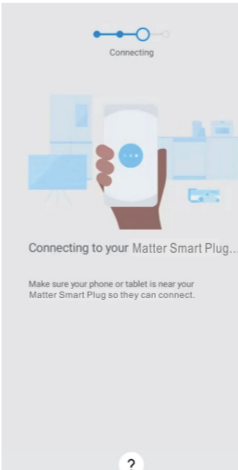


2

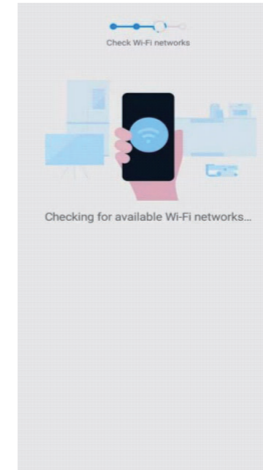


3

2-23rd

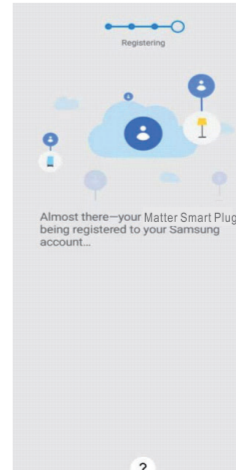


4

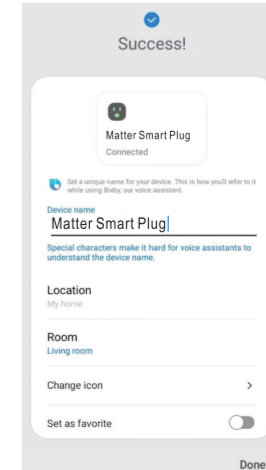


5

2-24th



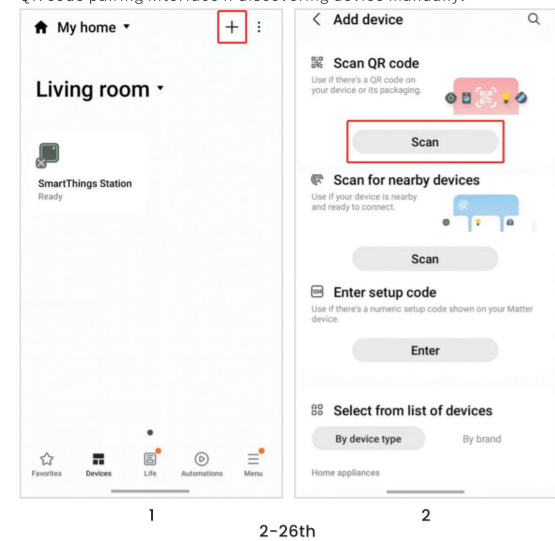
6



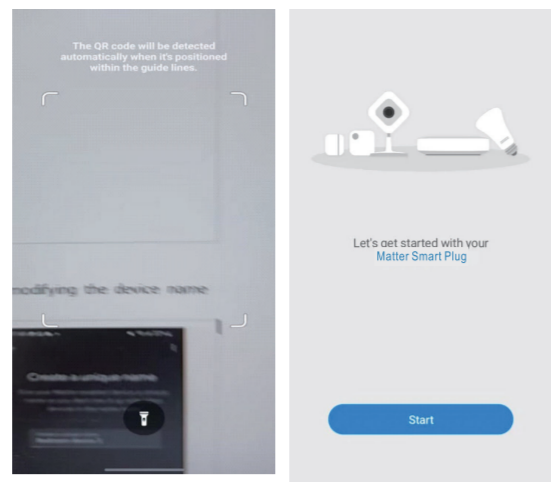
7

2-25th

QR code pairing interface if discovering device manually:



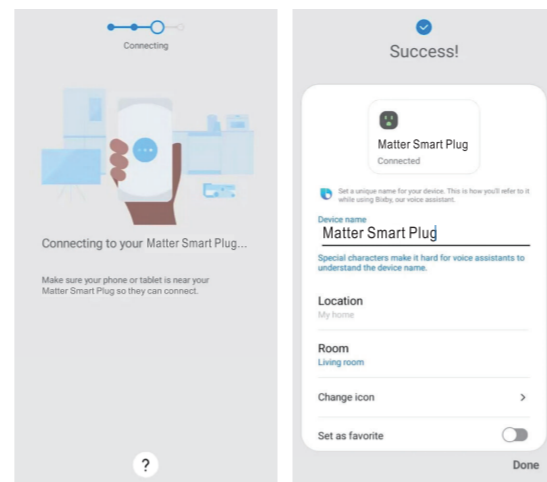
2-26th



3

2-27th

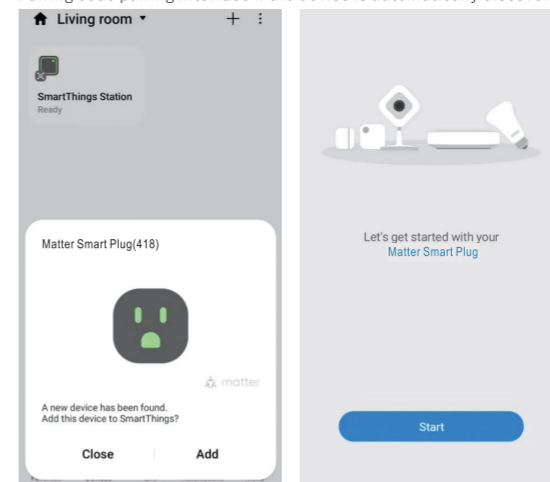
4



5

2-28th

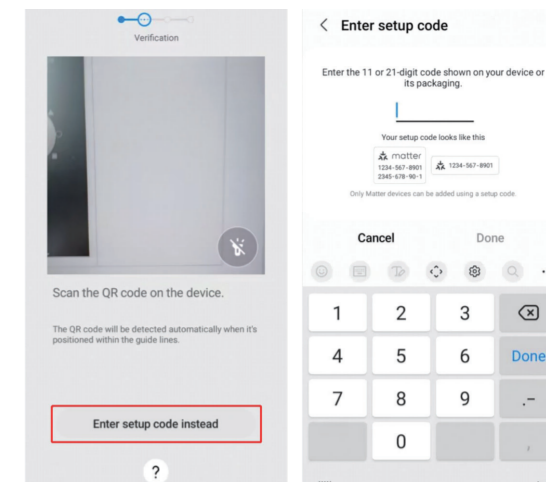
6



1

2-29th

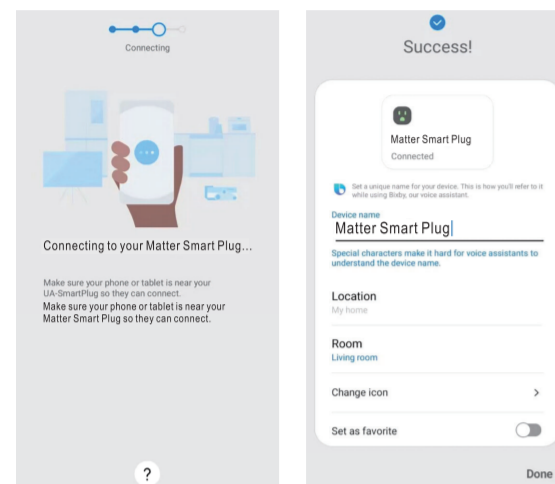
2



3

2-30th

4

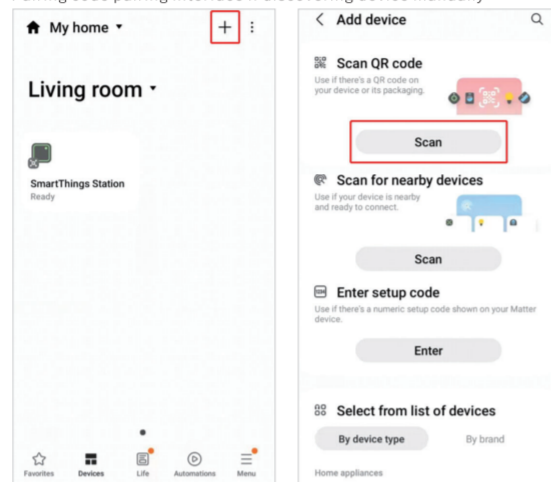


5

2-31st

6

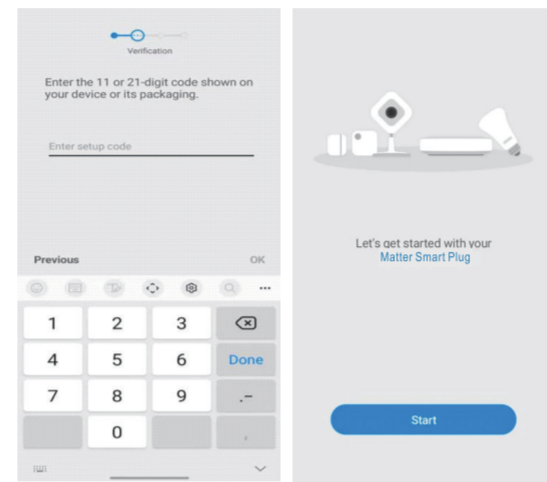
Pairing code pairing interface if discovering device manually:



1

2-32nd

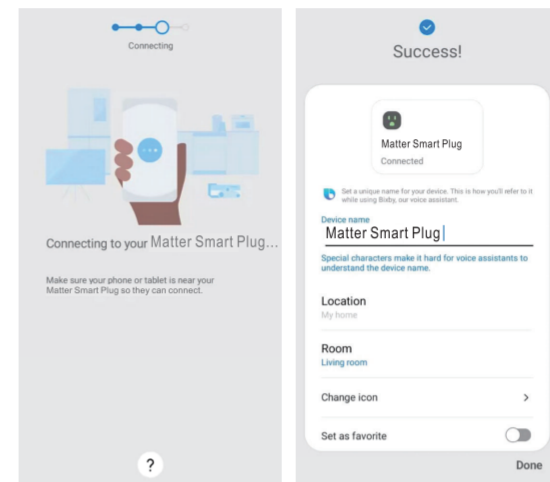
2



3

2-33rd

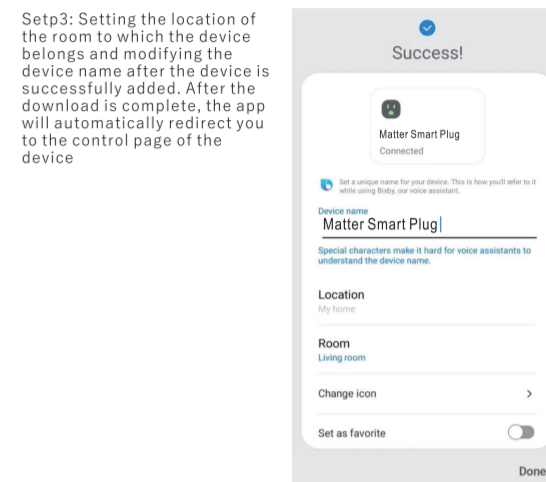
4



5

2-34th

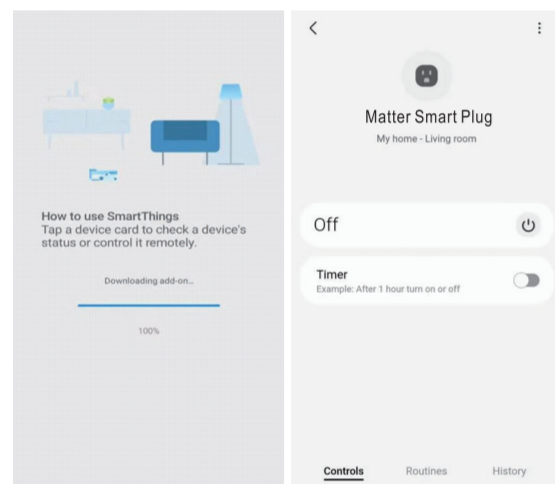
6



1

2-35th

Step3: Setting the location of the room to which the device belongs and modifying the device name after the device is successfully added. After the download is complete, the app will automatically redirect you to the control page of the device



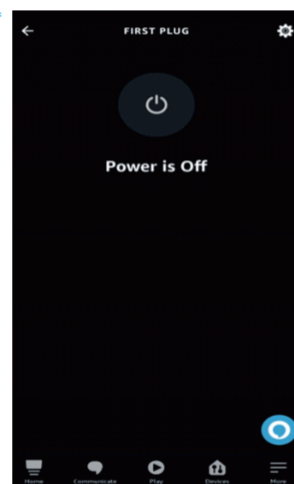
2

2-36th

3

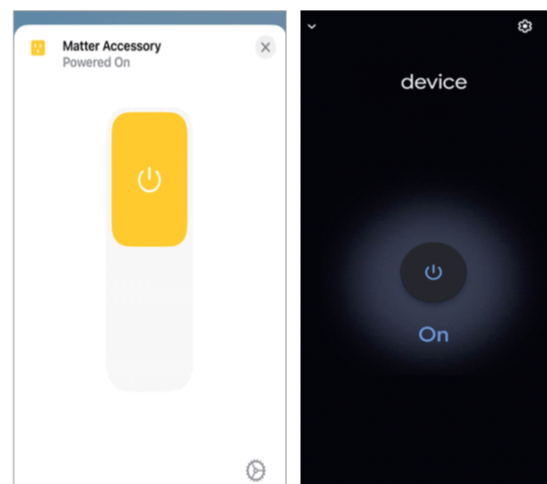
### 3. Plug Control

**3.1. App Control**  
Once the plug is paired, the App can be used to control the on/off switch of the device:



1

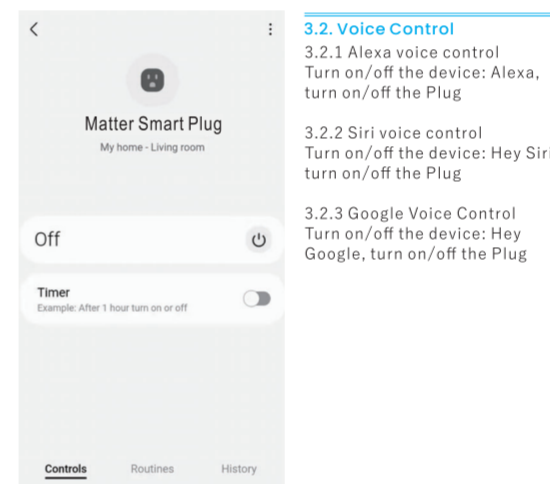
3-37th



2

3-38th

3



4

3-39th

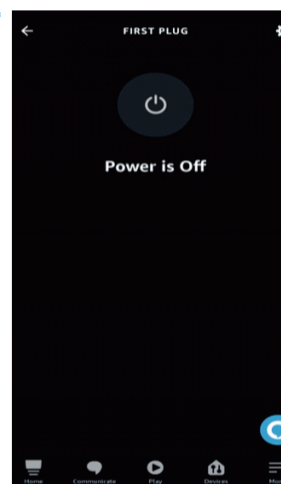
### 3.2. Voice Control

- 3.2.1 Alexa voice control  
Turn on/off the device: Alexa, turn on/off the Plug
- 3.2.2 Siri voice control  
Turn on/off the device: Hey Siri, turn on/off the Plug
- 3.2.3 Google Voice Control  
Turn on/off the device: Hey Google, turn on/off the Plug

### 4. Plug Sharing

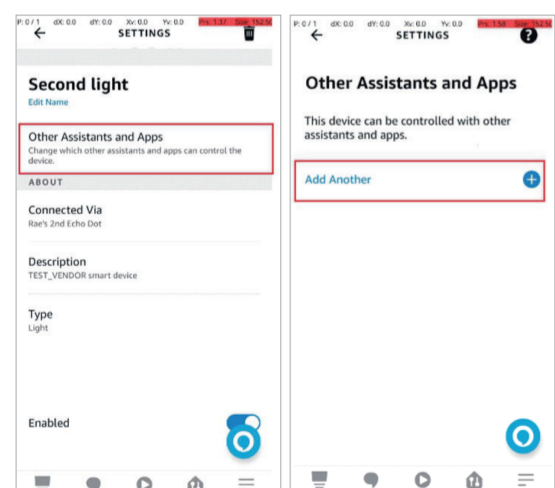
#### 4.1. Sharing Alexa with other ecosystems

Enter the device interface and click the gear icon in the upper right corner to enter the settings interface, select "Other Assistants and Apps", and then select "Add Another".



1

4-40th



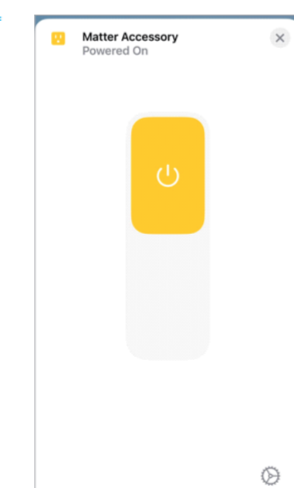
2

4-41st

3

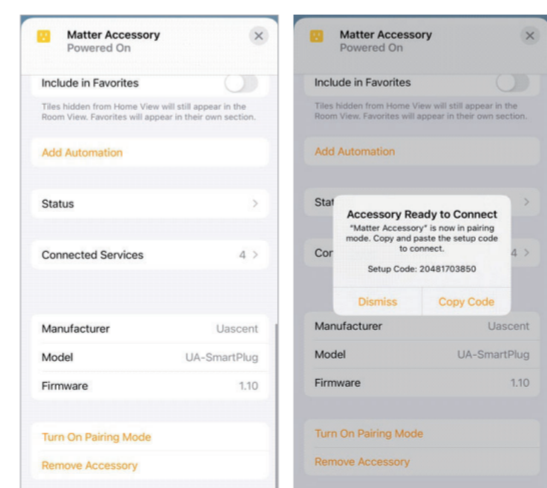
#### 4.2. Sharing Apple with other ecosystems

On the device control interface, scroll down to the bottom and select "Open Pairing Mode" to share the pairing code.



1

4-42nd



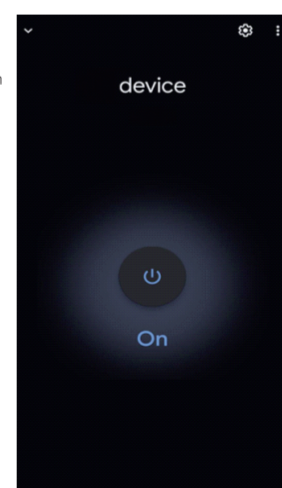
2

4-43rd

3

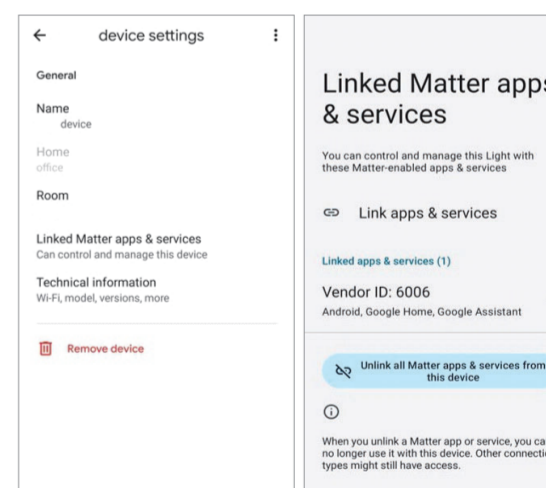
#### 4.3. Sharing Google with other ecosystems

Long press on the home screen to enter the device control interface, click the gear icon in the upper right corner to enter the settings, select the connected Matter application and service, and then select "Connect to Other Apps and Services" and choose to share the pairing code or QR code.



1

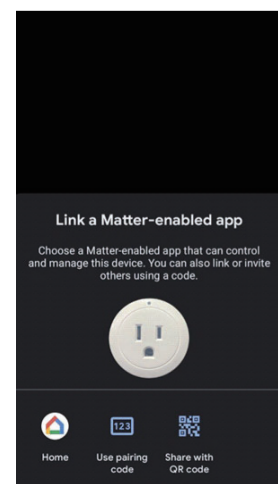
4-44th



2

4-45th

3

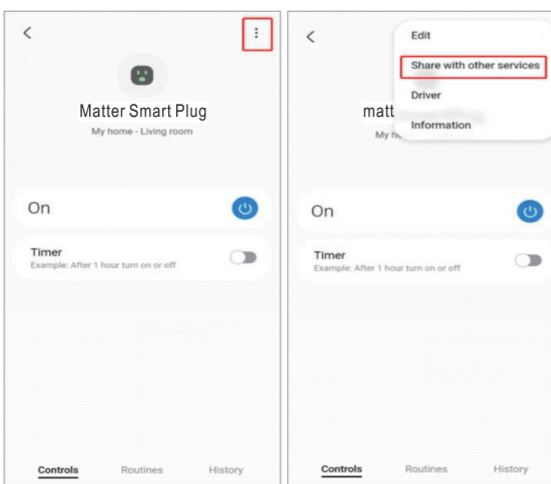


4

4-46th

#### 4.4. Sharing Samsung with other ecosystems

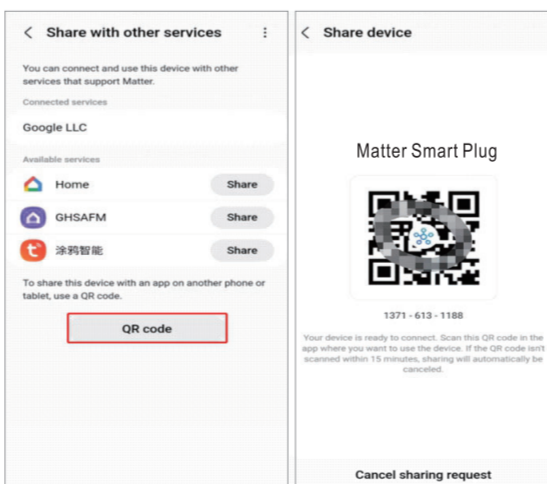
Enter the device control interface, click the edit icon in the upper right corner and select "Share with other services", you can share pairing code and QR code after clicking "QR code".



1

4-47th

2



1

4-48th

2

#### 4.5. Accepting shares from other ecosystems

If sharing from Alexa to the Apple platform, first put the device in sharing mode according to 4.1, and then refer to the instructions in the 2.2 module to use the Apple ecosystem to configure the network. Sharing with other ecosystems is also a similar operation. First put the device in sharing mode, and then use the accepted ecosystem to configure the network. Note that some ecosystems may only be able to share pairing codes or QR codes, so be sure to use the pairing code for configuration.

### 5. Precautions for each ecological use

#### 5.1. Why does my device fail to distribute the network

- 1), please confirm whether the mating phone and the eco-speaker are in the same WiFi LAN;
- 2), confirm whether the router is set up AP isolation (each connected device cannot communicate with each other to play the role of isolation), non-2.4G band, while the Apple phone can not be mated to the routing network without password or SSID containing spaces;
- 3), the speaker may be in a dormant state for a long time idle, you can try to restart the speaker;
- 4), Echo speaker has a function to remember the password, if the router WiFi password has been adjusted, it is recommended to clear the App so that the speaker with the network to use the original password, try to reset the speaker and App;

#### 5.2. Why can't my device enter sharing again after I quit sharing

Apple and Alexa have a single sharing timeout limit, 5 minutes for Apple and 15 minutes for Alexa. You cannot start sharing again before the timeout, so you can power down the device and turn on sharing again after the device is reconnected.

5-50th

**FCC Warning:**

This equipment has been tested and found to comply with the limits for a Class B digital device, pursuant to part 15 of the FCC Rules. These limits are designed to provide reasonable protection against harmful interference in a residential installation. This equipment generates, uses and can radiate radio frequency energy and, if not installed and used in accordance with the instructions, may cause harmful interference to radio communications. However, there is no guarantee that interference will not occur in a particular installation. If this equipment does cause harmful interference to radio or television reception, which can be determined by turning the equipment off and on, the user is encouraged to try to correct the interference by one or more of the following measures:

- Reorient or relocate the receiving antenna.
- Increase the separation between the equipment and receiver.
- Connect the equipment into an outlet on a circuit different from that to which the receiver is connected.
- Consult the dealer or an experienced radio/TV technician for help.

**Caution:** Any changes or modifications to this device not explicitly approved by manufacturer could void your authority to operate this equipment.

This device complies with part 15 of the FCC Rules. Operation is subject to the following two conditions:

(1) This device may not cause harmful interference, and (2) this device must accept any interference received, including interference that may cause undesired operation.

This equipment complies with FCC radiation exposure limits set forth for an uncontrolled environment. This equipment should be installed and operated with minimum distance 20cm between the radiator and your body.