

WIFI SMART SOCKET

Works with Amazon ECHO

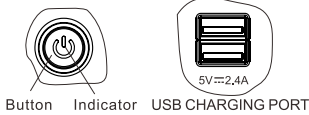
Thank you for choosing this Wifi smart socket. This smart socket can connect with internet through WiFi wireless network . No matter where you are, as long as there is a network, you can control the device's ON / OFF status via smart phone App , such as fans, lights, water heaters and fountain , etc ...

The socket have timer function and appointment function.

Please read the manual before usage.

1

Identification of parts:



Specification:

Power Supply: AC100V~240V,50/60Hz
Load current : 10A Resistive Max.
WiFi standard : 2.4G 802.11 b/g/n
Operation temperature : -20°C~50°C

Operation:

1. Down load APP

You can scan the QR code to down load App.



You can also search "Smart Life" in either Apple Store or Google Play to install the App.

2

2.Register APP

>>Run the APP
>>Login with your account & password.
For the first time using, you have to register a new account.

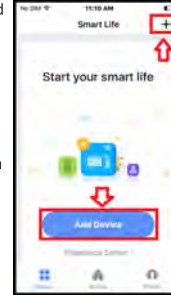
3.APP configuration

Please make sure the smart socket and you mobile phone covered by same Wifi router.
Plug the Wifi Smart Socket into a wall outlet.

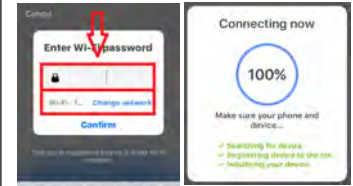
A. Easy mode

>>Make sure the indicator rapidly blink
If not, hold the button over 5 seconds until indicator rapidly blink. Not yet, try again.
(2 times per second).

>>Open the APP and click "Add Device" or "+" to add device, select " Electrical outlet " in the list of devices.
>>Click the " Confirm indicator rapidly Blink", search Wifi router and type in password and click "Confirm" .



3



Once the configuration is completed, the indicator light will stop flickering.

B.AP Mode

>>Hold the power button for 5 seconds until indicator light is slowly flashing .If not,try again. (1 times every 3S).
>>Click the "AP Mode", then click "Confirm indicator slowly blink". Search WIFI router and type in password and click "Confirm" .



4

>>Click "Connect now", connect to the WIFI "SmartLife-XXXX" . Then, back to the APP.



Once the configuration is completed, the indicator light will stop flickering.

4.Timer & Schedule function:

Click to set ON/OFF time

5.USB CHARGING PORT:

The USB port precisely read the power need and deliver optimum power charge accordingly . (DC 5V 2.4A Max.)

6.Manual control:

Click the button to control the ON/OFF status.

7.Device reset:

If you need to reset the smart socket, please hold the button over 5 seconds until indicator flashing quickly. If not, try again.

8.Other:

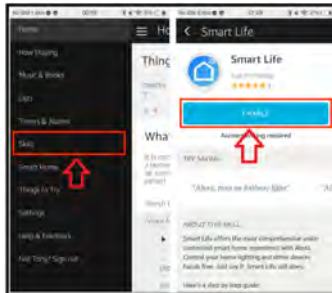
Click "... " and you will see: "Modify Device Name " "Device Sharing" "Check for Firmware Update"

5

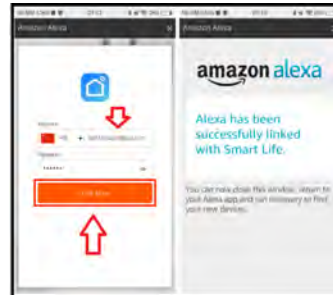
How to sync With Amazon Echo

1.Link Smart life account to Echo

>>Go to Home menu on Alexa App.
>>Select "Skills" in Home menu, search "Smart Life" on search window, select "Smart Life" and tap "Enable" to enable the Smart Life skill.
>>In link page, type in your Smart Life account & password and tap "link now" to link your Smart life account. Wait until "Alexa has been successfully linked with Smart Life" shows up.



6



2.Control smart devices through Echo

>>Echo needs to discover your smart devices before it controls them. You can say "Alexa, discover devices" to Echo,Echo will discover devices in about 20 seconds.

Now, you can control your smart devices through Echo: "Alexa, turn on/off bedroom light"

Note:

>>If you change the device's name on Smart Life APP, Echo must re-discover it before you control them.
>>You can set up groups on Alexa App to control.

7

Warning:

- Plug in fully to the wall outlet while using.
- Do not insert a conductor or other tools to the socket hole.
- If there is radio frequency interference, it might affect the operation.
- Indoor use only.
- Do not use in bathroom and other damp locations.
- Please ensure the security of the electricity, resistive load current can't be higher than 10A.
- Please keep the device out of the reach of children to avoid danger.



8

FCC Caution:

This device complies with part 15 of the FCC Rules. Operation is subject to the following two conditions: (1) This device may not cause harmful interference, and (2) this device must accept any interference received, including interference that may cause undesired operation.

Any Changes or modifications not expressly approved by the party responsible for compliance could void the user's authority to operate the equipment.

Note: This equipment has been tested and found to comply with the limits for a Class B digital device, pursuant to part 15 of the FCC Rules. These limits are designed to provide reasonable protection against harmful interference in a residential installation. This equipment generates uses and can radiate radio frequency energy and, if not installed and used in accordance with the instructions, may cause harmful interference to radio communications. However, there is no guarantee that interference will not occur in a particular installation. If this equipment does cause harmful interference to radio or television reception, which can be determined by turning the equipment off and on, the user is encouraged to try to correct the interference by one or more of the following measures:

- Reorient or relocate the receiving antenna.
- Increase the separation between the equipment and receiver.
- Connect the equipment into an outlet on a circuit different from that to which the receiver is connected.
- Consult the dealer or an experienced radio/TV technician for help.

This equipment complies with FCC radiation exposure limits set forth for an uncontrolled environment. This equipment should be installed and operated with minimum distance 20cm between the radiator & your body.