

## SCENARIOS

- 1.It is suitable for dogs over 6 months old and under 8 years old.
- 2.It is not suitable for dogs with hearing defects or loss of hearing. Audio mode can be used for dogs with hearing defects.
- 3.It is not suitable for aggressive, bad-tempered dogs.
- 4.During the use of the product, please do not let your ear close to it.

## FCC CAUTION

FCC ID: 2AOSL-SB1

## TECHNICAL SPECIFICATIONS

Brand Name: STUNICK  
 Model Number:SB1  
 Product Dimensions:5.9\*4.33\*1.38 inch  
 Operating Range:75 ft (maximum effective range); 350 ft with remote  
 Battery: 2000mAh Lithium Battery  
 Charging: Input 5VDC/0.5A  
 Remote Battery: CR2025

7

# MANUAL

## Automatic Ultrasonic Bark Control Device

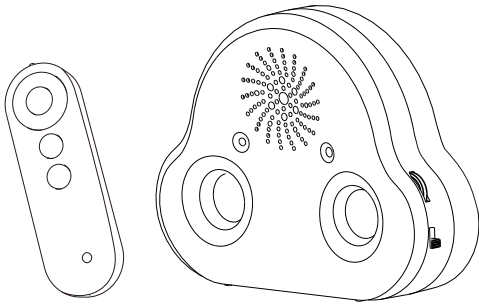
For more details on manual please visit:

[www.stunick.com](http://www.stunick.com)

Or scan the QR



Model: SB1



Please note results may vary. Like people, all dogs have different temperaments. On average, there are about ~3% of dogs don't respond to the device. If this is the case for your dog, please get in touch with us before opening a return request. Email us at:

[support@stunick.com](mailto:support@stunick.com)

We will work hard to put a smile on your face or issue a refund with no hassle of shipping the unit back. Whichever makes your day happier.

1

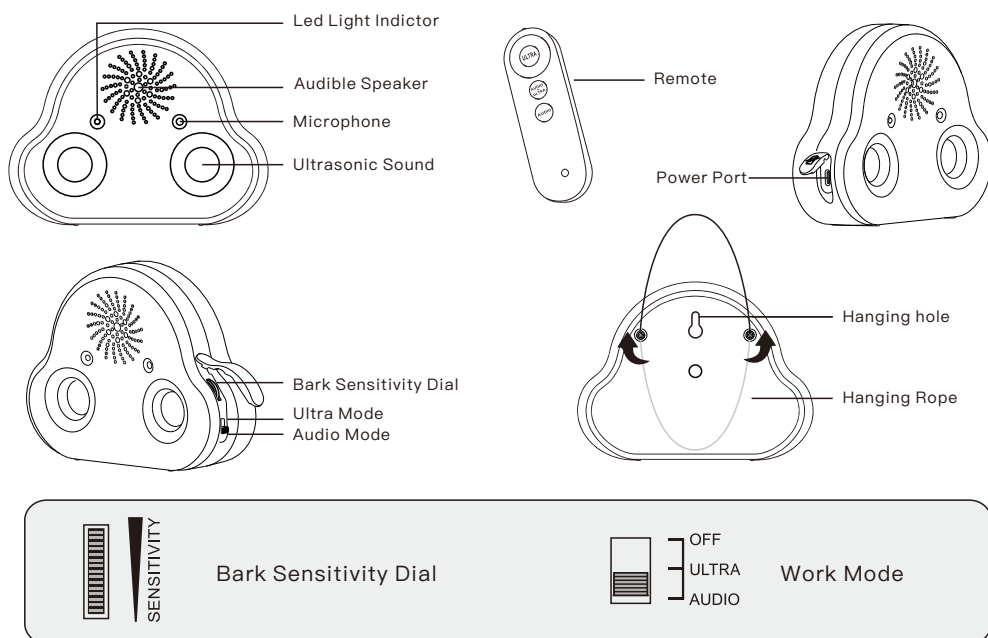
## What's In The Package?

- SB1 Anti Barking Device
- SB1 Remote Control
- SB1 USB-C Cable with Charger Adapter
- SB1 USB-C Long 60 Feet (Included only for the Neighbor Pack)
- SB1 Mounting Bracket with Pan & Tilt (Included only for the Neighbor Pack)



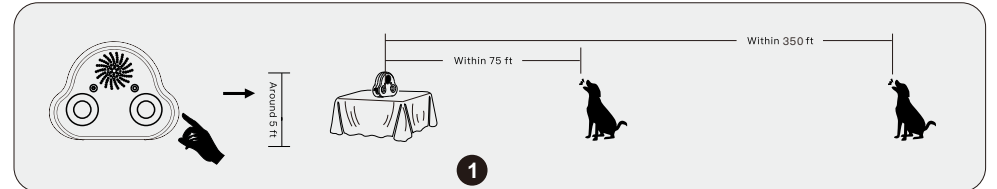
2

## COMPONENTS



3

## QUICK OPERATING INSTRUCTION



1.Select a location for use of the product that is around 5 ft. from the ground and 75 ft. from the dog's activity area, and make sure there are no other obstacles between the dog's activity and the product.

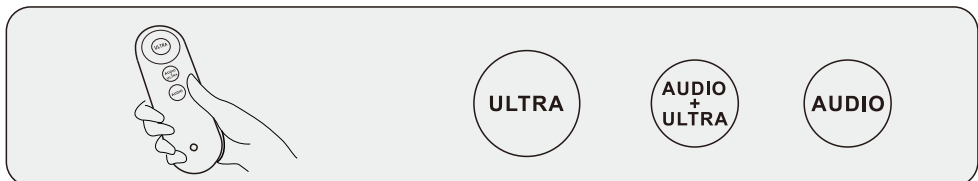


2.Switch to Audit mode first, you can hear each time the device is activating to the barking.

3.If the dog is 25ft away, adjust the bark sensitivity dial about 1/3 of the way up. If 50ft away then about 1/2 way up. If 75ft away then the dial almost all the way up.

4.Switch to Ultra mode once the device was set well and working properly.

4



1.Need to use the remote to activate the device if over than 75ft. The ultrasonic sound can travel up to 350ft away in an unobstructed line of sight. Just keep the remote to be within about 75ft of the device.

Adjust the dial to down all the way if you want to only activate the device with the remote. **NOTE: The device must be turned on before using the remote.**

2.The remote can be used to train unwanted behaviours as well. Adjust the dial to down all the way so that the device will not be activated by the barking.

## LED INDICATOR

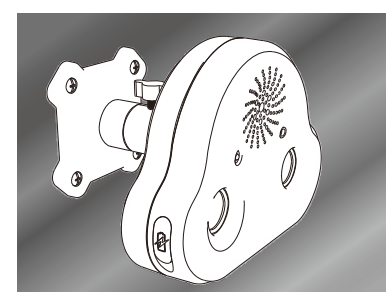
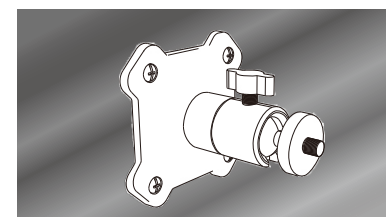
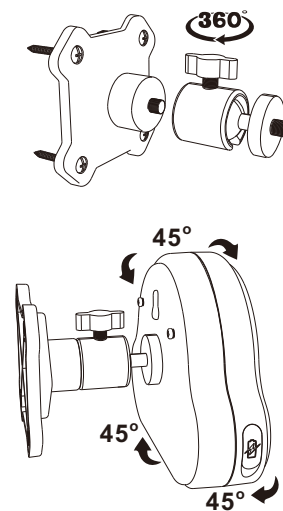
Green light	Flash once	In charge, emit ultrasonic
	Light up continuously	it is fully charged
Red light	Flash five times continuously	Low battery and it will turn off

5

## Accessory Mounting Bracket

Mounting Bracket with Pan & Tilt allows for a full 45° angle of tilt so that you can place your device at just the right angle.

## How to Install



6

FCC Warning Statement

Changes or modifications not expressly approved by the party responsible for compliance could void the user's authority to operate the equipment. This equipment has been tested and found to comply with the limits for a Class B digital device, pursuant to Part 15 of the FCC Rules. These limits are designed to provide reasonable protection against harmful interference in a residential installation. This equipment generates uses and can radiate radio frequency energy and, if not installed and used in accordance with the instructions, may cause harmful interference to radio communications. However, there is no guarantee that interference will not occur in a particular installation. If this equipment does cause harmful interference to radio or television reception, which can be determined by turning the equipment off and on, the user is encouraged to try to correct the interference by one or more of the following measures:

- Reorient or relocate the receiving antenna.
- Increase the separation between the equipment and receiver.
- Connect the equipment into an outlet on a circuit different from that to which the receiver is connected.
- Consult the dealer or an experienced radio/TV technician for help.

FCC Radiation Exposure Statement

The device has been evaluated to meet general RF exposure requirement. The device can be used in portable exposure condition without restriction.

This device complies with Part 15 of the FCC Rules. Operation is subject to the following two conditions:

- (1) This device may not cause harmful interference, and
- (2) This device must accept any interference received, including interference that may cause undesired operation.