

# WiFi Smart Bulb User Manual



Works with Alexa

Easy Guide to install Smart Life App on your Smart WiFi Devices. Pair with Amazon Alexa, Google Home Assistant, App Control (iOS and Android)

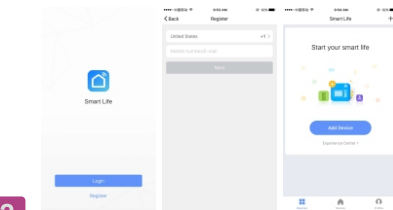
Works with Amazon Alexa. Supporting Smart Phone, Tablet. Both Android and iOS Compatible.

Download Smart Life from APP Store(iOS) or Google Play Store (Android) or scan QR code below.



When Smart Life App installed, open it, click "Register", and select your country if you use phone number to register, please click next step, and you will receive a verification code. Input the text code you received. If you use email, please click next step and create a password.

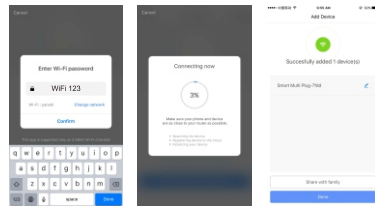
Set your password with 8 to 20 alphanumeric. ( If you have not received the activated email for a long time, please kindly check your spam email box also).



1 2

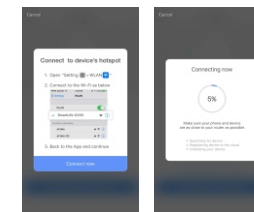
## Adding a New Device in Quick Connection Mode

- Make sure your Smart WiFi bulb is on standby. ( please keep turning on/off the power 3 times every 2 seconds).
- Open Smart Life App and click "+ Lighting device" to add your Smart WiFi bulb
- Select Wi-Fi network, input Wi-Fi password, Connect and click.
- Once connected the app will prompt the connection and click OK.



## Adding a New Device in AP Mode

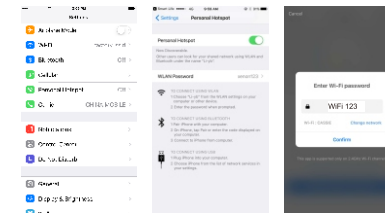
- Make sure the WiFi Bulb is on AP Mode.(The Smart Bulb blink slowly once every 2 seconds).
- Press "+ Lighting device" in the App.
- Click "AP Mode" on the upper right corner of the App, and press Next Step.
- Select WiFi and input WiFi password, press Next.



3 4

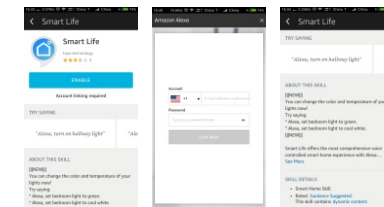
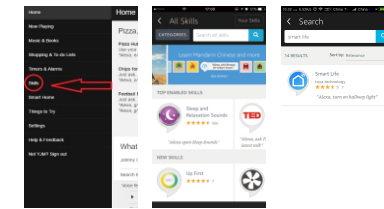
- Press Connect now.
- Go to WLAN setting in your Smart Phone and select "Smart Life" for your WiFi, no need to input password when you select the "Smart Life"(If your smart phone has Android OS, you can connect it directly).
- Go back to Smart Life App, and press "Connect".
- Confirm Done.

Once your Smart WiFi Bulb added successfully, you can control it from Smart Life App.



## How to Sync with Amazon Alexa(Echo)

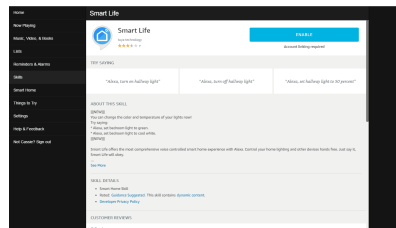
- Open your Alexa App(From your Smart Phone or from web.), log into your Alexa Account.
- Select "Skills" in Amazon Alexa Menu.
- Type "Smart Life" on search window and find it.
- Click "Smart Life" and press Enable to link with Alexa(Echo).
- Input your Smart Life Account name and password.



To search the Smart WiFi Device that you have installed near your Alexa(Echo) equipment, please click Discover Devices or by voice command: Alexa(Echo), discover devices.

5

Bulb



Now your Smart WiFi Device is paired with Alexa, and you can control any devices that you already linked to your Smart Life App.

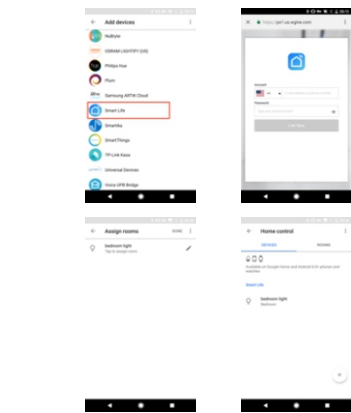
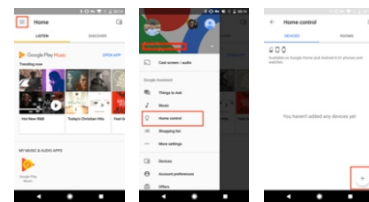
Note: Name the Smart WiFi Devices a simple name that Alexa can recognize, such as: bedroom light(you can change the device name in Smart Life App). Now you can voice control: Echo(Alexa), turn on bedroom light; Echo(Alexa), turn off bedroom light.

## How to Use Google Home/Google Assistant to control your Smart Devices

Link Smart Life account in Home Control

- Tap "Home Control" in the hamburger menu of the Google Home / Google Assistant App's home page, then tap "+".
- Find "Smart Life" in the list, click it, select your Smart Life account region, type in account user name, password, then tap "Link Now". Click Authorize.
- Your devices will be listed in the Home Control page. And you can also assign rooms for devices.

6



- Now you can control your Smart Devices through Google Home, just say: OK, Google, turn on bedroom light; OK, OK, Google, turn off bedroom light.

7 8

## Voice control phrase by Alexa/Google Home

Talk WiFi Bulb as an example by the name of "light" (DeviceName)

- ON**  
Alexa/OK Google, turn on light(DeviceName). When you hear response "OK" means control successfully.
- OFF**  
Alexa/OK Google, turn off light(DeviceName).
- Dimming**
  - Alexa/OK Google, set light(DeviceName) to 80%.
  - Alexa/OK Google, dim light(DeviceName) to 50%.
  - Alexa/OK Google, dim light(DeviceName) by 100%.

## Q & A

### Why failed to add the Smart WiFi Devices?

- Please check whether the device is powered on or not.
- Whether your Smart Phone is connected with WiFi or not.
- Whether the Smart Device is ready for configuration. Please refer to "Product Instructions" or "Device Reset Instructions" for details.
- Check routers or related. If your router is a dual band one (2.4G, 5.8G), please choose 2.4G network to add devices. And you also need to enable router's broadcasting function, and not allow to hide WiFi.

Set up wireless router: Set encryption method as WPA2-PSK and authorization type as AES, or set both as AUTO. Wireless model can not be 11n only.

Confirm that WiFi name contains letters only.

To get stronger WiFi signal, please keep your Smart WiFi Devices closer to the router.

Check devices connected reach to Router's maximum limit or not, if yes, please try to turn off some devices' WiFi connections.

If router enables MAC address filter, please try to removing the device from MAC filter list and make sure router is allowing the device to be connected.

- Make sure Smart Life App account user name and password is correct.

### How to Reset your Smart WiFi Devices?

For Smart Bulbs, turn on/off the power 3 times continuously. Quick Connecting Mode: led flashes quickly(twice per 1s) AP Mode: led flashes slowly(once per 2s)

Under Quick Connecting Mode, press power button long for 6s, until led flashes slowly, means switched to AP mode, or vise versa.

Reset the Smart WiFi LED Bulb: Turn off the bulb first, then turn on-off-on-off-on(every time on/off gap can not be over 10s), now if bulb blinks, it means resetting successful; if not, please repeat the steps.

Quick Connect Mode: blinks fast(4 times per 1s)

AP Mode: blinks slowly(twice per 3s)

Under Quick Connect Mode, turn off bulb, then turn on-off-on-off-on(every time on/off gap can not be over 10s), now if bulb blinks slowly, means the bulb switched to AP Mode, or vise versa.

### How to add Smart WiFi Devices under Quick Connect Mode?

- Make sure that the LED indicator or the bulb blinks fast.
- Your Smart Phone already connected with WiFi Router and can access to internet.

9 10

### How to add Smart WiFi Devices under AP Mode?

- Make sure that the LED indicator or the bulb blinks slowly.
- Tap Add Device in Smart Life App and then AP Mode in the top right corner. Connect to device hotspot first and then your WiFi.
- Tap "NEXT" to add Smart WiFi Device.

### Can I control the Smart WiFi Devices via 2G/3G/4G/LTE Network?

When adding Smart WiFi Device for the first time, you need to have device and your Smart Phone under the same WiFi network. When smart device added successfully, you can control your device remotely with 2G/3G/4G/LTE, or other WiFi.

### How can I share my smart device with families?

Open Smart Life App, go to Profile-Device Sharing-Shares Sent, tap Add Sharing, choose devices that you want to share, click Share with New Member, enter the phone No, then you can share the smart devices with the family members you choose.

(Note, you need to authorize Smart Life App can access to your contact list when you install the Smart Life App, you can also close the authorization in your phone's setting, then you can not share device with your family members.)

### How can I manage the devices shared by others?

Open Smart Life App, go to Profile-Device Sharing-Shares Received, then you can find the devices shared by other users. You can add remarks to the shared users or delete shared users by press long or swiping left. Any other questions, you can kindly check with your supplier.

## **FCC STATEMENT :**

This device complies with Part 15 of the FCC Rules. Operation is subject to the following two conditions:

- (1) This device may not cause harmful interference, and
- (2) This device must accept any interference received, including interference that may cause undesired operation.

**Warning:** Changes or modifications not expressly approved by the party responsible for compliance could void the user's authority to operate the equipment.

NOTE: This equipment has been tested and found to comply with the limits for a Class B digital device, pursuant to Part 15 of the FCC Rules. These limits are designed to provide reasonable protection against harmful interference in a residential installation. This equipment generates uses and can radiate radio frequency energy and, if not installed and used in accordance with the instructions, may cause harmful interference to radio communications. However, there is no guarantee that interference will not occur in a particular installation. If this equipment does cause harmful interference to radio or television reception, which can be determined by turning the equipment off and on, the user is encouraged to try to correct the interference by one or more of the following measures:

- Reorient or relocate the receiving antenna.

- Increase the separation between the equipment and receiver.

- Connect the equipment into an outlet on a circuit different from that to which the receiver is connected.

- Consult the dealer or an experienced radio/TV technician for help.

## **FCC Radiation Exposure Statement:**

This equipment complies with FCC radiation exposure limits set forth for an uncontrolled environment. This equipment should be installed and operated with minimum distance 20cm between the radiator & your body.