



Report No.: EA2009363F02002

1 of 53

**ELECTROMAGNETIC EMISSIONS COMPLIANCE REPORT
FCC PART 15 SUBPART C REQUIREMENT**

OF

Game Controller

Model No.: Vader 2

Trademark:Flydigi

FCC ID:2AORE-VADER2

Report No.: EA2009363F02002

Issue Date: Oct. 29, 2020

Prepared for

Shanghai Flydigi Electronics Technology Co., Ltd.

Rm1108, No.258 Guoxia Rd, Yangpu District, Shanghai, China

Prepared by

Dong Guan Anci Electronic Technology Co., Ltd.

**1-2 Floor, Building A, No.11, Headquarters 2 Road, Songshan, Lake Hi-tech
Industrial Development Zone, Dongguan City, Guangdong Pr., China..**

**This report shall not be reproduced, except in full, without the written approval of
Dong Guan Anci Electronic Technology Co., Ltd.**

**VERIFICATION OF COMPLIANCE**

Applicant:	Shanghai Flydigi Electronics Technology Co., Ltd. Rm1108, No.258 Guoxia Rd, Yangpu District, Shanghai, China
Manufacturer:	Shanghai Flydigi Electronics Technology Co., Ltd. Rm1108, No.258 Guoxia Rd, Yangpu District, Shanghai, China
Product Description:	Game Controller
Trade Mark:	Flydigi
Model Number:	Vader 2

We hereby certify that:

The above equipment was tested by Dong Guan Anci Electronic Technology Co., Ltd. The test data, data evaluation, test procedures, and equipment configurations shown in this report were made in accordance with the procedures given in ANSI C63.10-2013 and the energy emitted by the sample EUT tested as described in this report is in compliance with conducted and radiated emission limits of FCC Rules Part 15.247(2020).

Date of Test :

Oct. 15, 2020 to Oct. 28, 2020

Prepared by :

Tomas Yang/Editor

Approved & Authorized Signer :

Alan He/Manager



Modified Information

Version	Summary	Revision Date	Report No.
Ver.1.0	Original Report	/	EA2009363F02002



Table of Contents

1. GENERAL INFORMATION.....	6
1.1 PRODUCT DESCRIPTION.....	6
1.2 TEST METHODOLOGY.....	6
2. TEST FACILITY.....	7
3. DESCRIPTION OF TEST MODES.....	8
4. SUMMARY OF TEST RESULTS.....	10
6DB BANDWIDTH MEASUREMENT.....	10
5. TEST SYSTEM UNCERTAINTY.....	11
6. CONDUCTED EMISSIONS TEST.....	12
6.1 MEASUREMENT PROCEDURE:.....	12
6.2 TEST SET-UP (BLOCK DIAGRAM OF CONFIGURATION).....	12
6.3 MEASUREMENT EQUIPMENT USED:.....	12
6.4 CONDUCTED EMISSION LIMIT.....	12
6.5 MEASUREMENT RESULT:.....	13
7. RADIATED EMISSION TEST.....	16
7.1 MEASUREMENT PROCEDURE.....	16
7.2 TEST SET-UP (BLOCK DIAGRAM OF CONFIGURATION).....	18
7.3 MEASUREMENT EQUIPMENT USED:.....	19
7.4 RADIATED EMISSION LIMIT.....	20
7.5 MEASUREMENT RESULT.....	21
7.6 RADIATED MEASUREMENT PHOTOS:.....	27
8. 6DB BANDWIDTH MEASUREMENT.....	28
8.1 MEASUREMENT PROCEDURE.....	28
8.2 TEST SET-UP (BLOCK DIAGRAM OF CONFIGURATION).....	28
8.3 MEASUREMENT EQUIPMENT USED:.....	28
8.4 LIMIT.....	28
8.5 MEASUREMENT RESULTS:.....	28
9. MAXIMUM PEAK OUTPUT POWER TEST.....	31
9.1 MEASUREMENT PROCEDURE.....	31
9.2 TEST SET-UP (BLOCK DIAGRAM OF CONFIGURATION).....	31
9.3 MEASUREMENT EQUIPMENT USED:.....	31
9.4 PEAK POWER OUTPUT LIMIT.....	31
9.5 MEASUREMENT RESULTS:.....	31
10. POWER SPECTRAL DENSITY MEASUREMENT.....	34



- 10.1 MEASUREMENT PROCEDURE..... 34
- 10.2 TEST SET-UP (BLOCK DIAGRAM OF CONFIGURATION)..... 34
- 10.3 MEASUREMENT EQUIPMENT USED:..... 34
- 10.4 MEASUREMENT PROCEDURE..... 34
- 10.5 MEASUREMENT RESULTS:..... 35
- 11. BAND EDGE TEST..... 38**
 - 11.1 MEASUREMENT PROCEDURE..... 38
 - 11.2 TEST SET-UP (BLOCK DIAGRAM OF CONFIGURATION)..... 39
 - 11.3 MEASUREMENT EQUIPMENT USED:..... 39
 - 11.4 MEASUREMENT RESULTS:..... 40
- 12 ANTENNA APPLICATION..... 46**
 - 12.1 ANTENNA REQUIREMENT..... 46
 - 12.2 RESULT..... 46
- APPENDIX (PHOTOS OF EUT) (7 PAGES)



1. GENERAL INFORMATION

1.1 Product Description

Characteristics	Description
Product Name	Game Controller
Model number	Vader 2
Input Rating	DC 5V, 0.5A
Power Supply	Battery 3.7V and AC 120V/60Hz for adapter
Modulation	GFSK
Operating Frequency Range	2406-2475MHz
Number of Channels	5
Transmit Power Max(PK)	0.1dBm(0.001W)
Antenna Type	Internal PCB antenna
Antenna Gain	0.11dBi

1.2 Test Methodology

All the test program has follow FCC new test procedure KDB 558074 D01 DTS Meas Guidance v05 and in accordance with the procedures given in ANSI C63.10-2013.



Report No.: EA2009363F02002

7 of 53

2. Test Facility

Site Description

EMC Lab. : Accredited by CNAS, 2017.06.26
The certificate is valid until 2022.10.28
The Laboratory has been assessed and proved to be in compliance with CNAS-CL01:2006 (identical to ISO/IEC 17025:2005)
The Certificate Registration Number is L6214.

Accredited by A2LA, 2018.03.15
The Certificate Number is 4422.01.

Name of Firm : Dong Guan Anci Electronic Technology Co., Ltd.
Site Location : 1-2 Floor, Building A, No.11, Headquarters 2 Road, Songshan, Lake Hi-tech Industrial Development Zone, Dongguan City, Guangdong Pr., China.



3. Description of test modes

The EUT has been tested under its typical operating condition and fully-charged battery for EUT tested alone. Pre-defined engineering program for regulatory testing used to control the EUT for staying in continuous transmitting. Only the worst case data were reported.

For Radiated: The EUT's antenna was pre-tested under the following modes:

Test Mode	Description
Mode A	X-Y axis
Mode B	Y-Z axis
Mode C	X-Z axis

From the above modes, the worst case was found in Mode C. Therefore only the test data of the mode was recorded in this report.

The EUT has been associated with peripherals pursuant to ANSI C63.10-2013 and configuration operated in a manner tended to maximize its emission characteristics in a typical application. Frequency range investigated: radiation (9 KHz to the 10th harmonics of the highest fundamental frequency or to 40 GHz, whichever is lower).

Configuration of Tested System



Equipment Used in Tested System

Item	Equipment	Trademark	Model No.	FCC ID	Note
1.	Game Controller	Flydigi	Vader 2	2AORE-VADER2	EUT
2.	Adapter	MI	Model:MDY-08-EH Input: AC 100-240V, 50/60Hz Output: DC 5V/2.5A,DC 9/2A	N/A	Support EUT



Report No.: EA2009363F02002

9 of 53

The EUT has been tested under TX operating condition.

Channel List:

Channel	Frequency (MHz)	Channel	Frequency (MHz)	Channel	Frequency (MHz)
00	2406	02	2440	04	2475
01	2420	03	2460		

Note:

1. Test of channel was included the lowest 2406MHz, middle 2440MHz and highest frequency 2475MHz in highest data rate and to perform the test, then record on this report.



4. Summary of Test Results

FCC Rules	Description Of Test	Result
§15.207	AC Power Conducted Emission	Compliant
§15.247(d),§15.209	Radiated Emission	Compliant
§15.247(a)(2)	6dB Bandwidth Measurement	Compliant
§15.247(b)	MAXIMUM PEAK OUTPUT POWER TEST	Compliant
§15.247(e)	Power Spectral Density Measurement	Compliant
§15.247(d)	Band EDGE test	Compliant
§15.203	Antenna Requirement	Compliant
Remark: According to FCC OET KDB 558074, the report use radiated measurements in the restricted frequency bands. In addition, the radiated test is also performed to ensure the emissions emanating from the device cabinet also comply with the applicable limits.		



5. TEST SYSTEM UNCERTAINTY

The following measurement uncertainty levels have been estimated for tests performed on the apparatus:

Parameter	Uncertainty
Radio Frequency	$\pm 1 \times 10^{-5}$
Maximum Peak Output Power Test	$\pm 1.0\text{dB}$
Conducted Emissions Test	$\pm 2.0\text{dB}$
Radiated Emission Test	$\pm 2.0\text{dB}$
Power Density	$\pm 2.0\text{dB}$
Occupied Bandwidth Test	$\pm 1.0\text{dB}$
Band Edge Test	$\pm 3\text{dB}$
All emission, radiated	$\pm 3\text{dB}$
Antenna Port Emission	$\pm 3\text{dB}$
Temperature	$\pm 0.5^\circ\text{C}$
Humidity	$\pm 3\%$

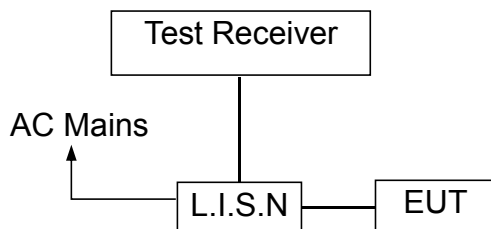
Remark: The coverage Factor ($k=2$), and measurement Uncertainty for a level of Confidence of 95%

6. Conducted Emissions Test

6.1 Measurement Procedure:

1. The EUT was placed on a table, which is 0.8m above ground plane.
2. Maximum procedure was performed on the six highest emissions to ensure EUT compliance.
3. Repeat above procedures until all frequency measured was complete.

6.2 Test SET-UP (Block Diagram of Configuration)



6.3 Measurement Equipment Used:

EQUIPMENT TYPE	MFR	MODEL NUMBER	SERIAL NUMBER	Calibrated until
L.I.S.N	SCHWARZBECK	NSLK 8127	8127-669	2021-05-18
10 db attenuator	JFW	50FP-010-H4	4360846-427-1	2021-05-18
RF Cable	N/A	N/A	2#	2021-05-18
EMI Test Receiver	ROHDE&SCHWARZ	ESCI	101358	2021-05-18

6.4 Conducted Emission Limit

(7) Conducted Emission

Frequency(MHz)

0.15-0.5

0.5-5.0

5.0-30.0

Quasi-peak

66-56

56

60

Average

56-46

46

50

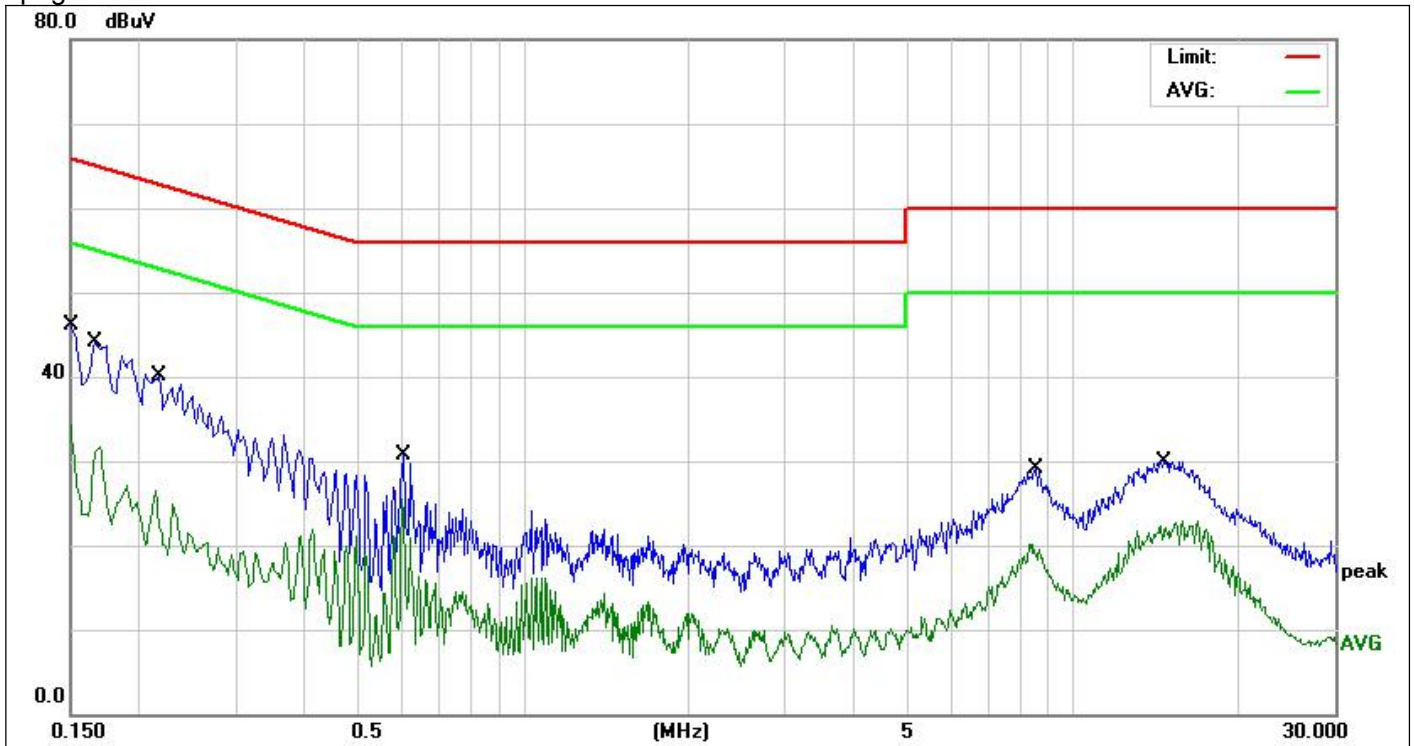
Note:

1. The lower limit shall apply at the transition frequencies
2. The limit decreases in line with the logarithm of the frequency in the range of 0.15 to 0.50MHz.



6.5 Measurement Result:

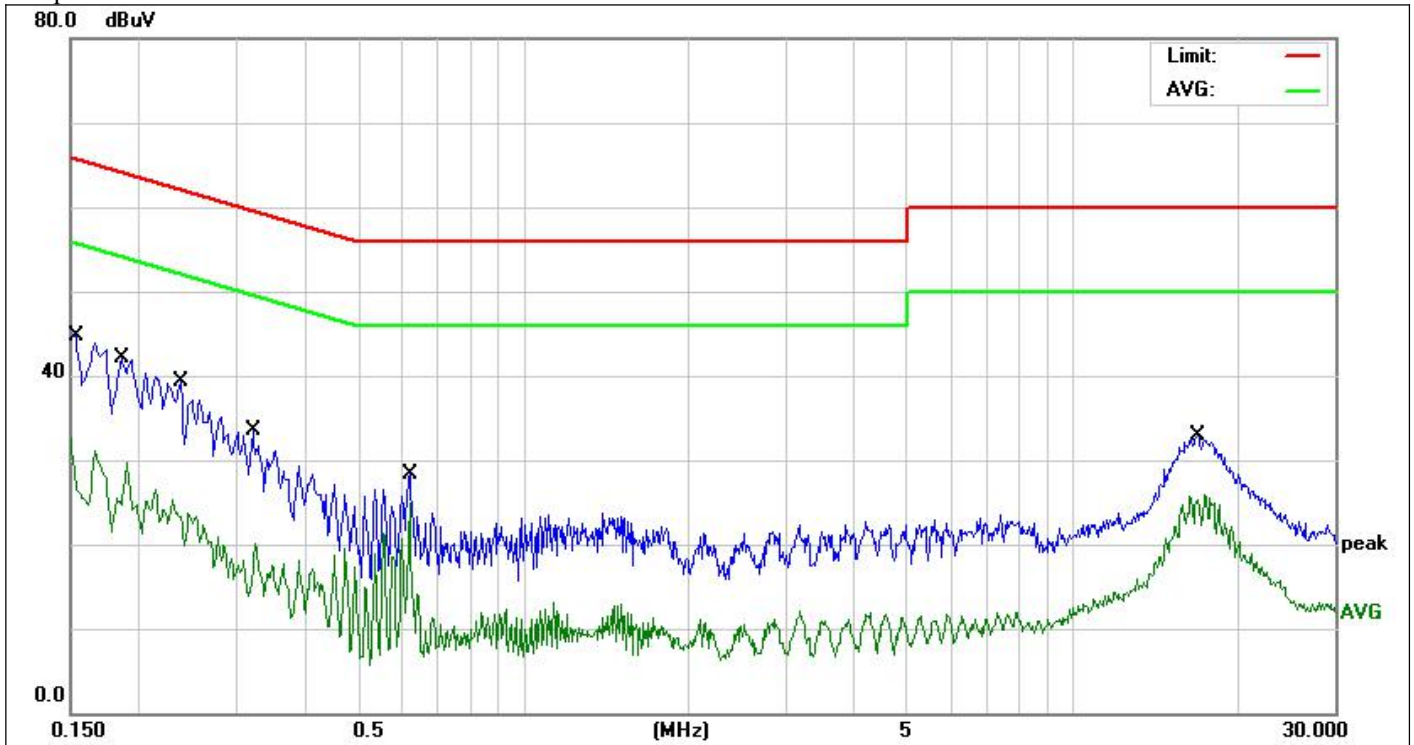
All the modulation modes were tested the data of the worst mode (GFSK TX2440) are recorded in the following pages and the others modulation methods do not exceed the limits. Please refer to following pages.



Site:	843	Phase:L1	Temperature(C):26(C)
Limit:	FCC PART 15C Conduction(QP)	Test Time:	Humidity(%):60%
EUT:	Game Controller	Power Rating:	2020-10-24
M/N.:	Vader 2	Test Engineer:	AC 120V/60Hz
Mode:	TX2440		Sunshine
Note:			

No.	Frequency (MHz)	Reading Level(dBuV)	Factor (dB)	Measurement(dBuV)	Limit (dBuV)	Over (dB)	Detector	Comment
1 *	0.1500	33.31	10.16	43.47	65.99	-22.52	QP	
2	0.1500	20.62	10.16	30.78	55.99	-25.21	AVG	
3	0.1660	31.48	10.15	41.63	65.15	-23.52	QP	
4	0.1660	18.22	10.15	28.37	55.15	-26.78	AVG	
5	0.2180	25.79	10.16	35.95	62.89	-26.94	QP	
6	0.2180	10.45	10.16	20.61	52.89	-32.28	AVG	
7	0.6060	16.39	10.21	26.60	56.00	-29.40	QP	
8	0.6060	12.47	10.21	22.68	46.00	-23.32	AVG	
9	8.5500	14.51	10.63	25.14	60.00	-34.86	QP	
10	8.5500	7.70	10.63	18.33	50.00	-31.67	AVG	
11	14.6020	15.13	10.99	26.12	60.00	-33.88	QP	
12	14.6020	9.44	10.99	20.43	50.00	-29.57	AVG	

*:Maximum data x:Over limit !:over margin

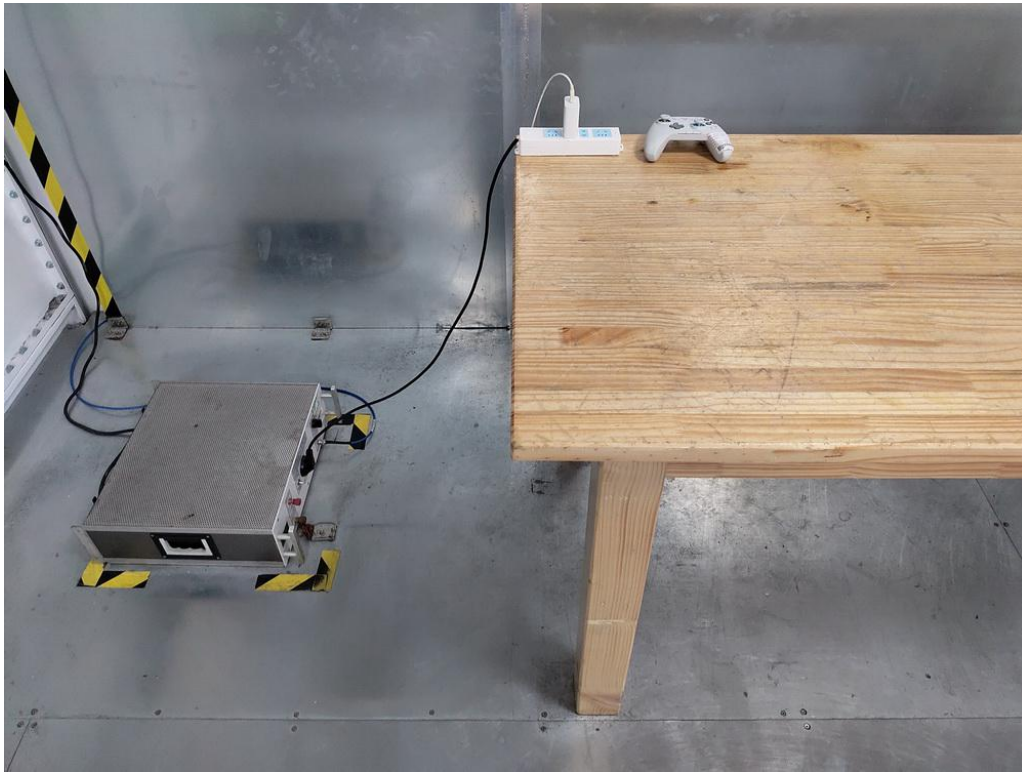


Site:	843	Phase:	N	Temperature(C):	26(C)
Limit:	FCC PART 15C Conduction(QP)	Test Time:	2020-10-24	Humidity(%):	60%
EUT:	Game Controller	Power Rating:	AC 120V/60Hz	Test Engineer:	Sunshine
M/N.:	Vader 2				
Mode:	TX2440				
Note:					

No.	Frequency (MHz)	Reading Level(dBuV)	Factor (dB)	Measurement(dBuV)	Limit (dBuV)	Over (dB)	Detector	Comment
1	0.1539	28.40	10.11	38.51	65.78	-27.27	QP	
2	0.1539	15.30	10.11	25.41	55.78	-30.37	AVG	
3	0.1860	28.61	10.10	38.71	64.21	-25.50	QP	
4	0.1860	15.52	10.10	25.62	54.21	-28.59	AVG	
5	0.2380	24.24	10.11	34.35	62.16	-27.81	QP	
6	0.2380	11.09	10.11	21.20	52.16	-30.96	AVG	
7	0.3220	17.88	10.11	27.99	59.65	-31.66	QP	
8	0.3220	5.77	10.11	15.88	49.65	-33.77	AVG	
9	0.6220	15.84	10.13	25.97	56.00	-30.03	QP	
10 *	0.6220	14.12	10.13	24.25	46.00	-21.75	AVG	
11	16.8660	18.06	11.02	29.08	60.00	-30.92	QP	
12	16.8660	11.60	11.02	22.62	50.00	-27.38	AVG	

*:Maximum data x:Over limit !:over margin

6.5 Conducted Measurement Photos:





7. Radiated Emission Test

7.1 Measurement Procedure

1. The testing follows the guidelines in ANSI C63.10-2013.
2. Below 1000MHz, The EUT was placed on a turn table which is 0.8m above ground plane. And above 1000MHz, The EUT was placed on a styrofoam table which is 1.5m above ground plane.
3. The EUT was set 3 meters from the interference receiving antenna, which was mounted on the top of a variable height antenna tower.
4. The EUT was arranged to its worst case and then tune the Antenna tower (From 1m to 4m) and turntable (from 0 degree to 360 degrees) to find the maximum reading. A pre-amp and a high pass filter are used for the test in order to get better signal level.
5. For measurement below 1GHz, if the emission level of the EUT measured by the peak detector is 3dB lower than the applicable limit, the peak emission level will be reported. Otherwise, the emission measurement will be repeated using the quasi-peak detector and reported.
6. Final measurement (Above 1GHz): The frequency range will be divided into different sub ranges depending of the frequency range of the used horn antenna. The EMI Receiver set to peak and average mode and a resolution bandwidth of 1MHz. The measurement will be performed in horizontal and vertical polarization of the measuring antenna and while rotating the EUT in its vertical axis in the range of 0 degree to 360 degree in order to have the antenna inside the cone of radiation.
7. Test Procedure of measurement (For Above 1GHz):
 - 1) Monitor the frequency range at horizontal polarization and move the antenna over all sides of the EUT(if necessary move the EUT to another orthogonal axis).
 - 2) Change the antenna polarization and repeat 1) with vertical polarization.
 - 3) Make a hardcopy of the spectrum.
 - 4) Measure the frequency of the detected emissions with a lower span and resolution bandwidth to increase the accuracy and note the frequency value.
 - 5) Change the analyser mode to Clear/ Write and found the cone of emission.
 - 6) Rotate and move the EUT, so that the measuring distance can be enlarged to 3m and the antenna will be still inside the cone of emission.
 - 7) Measure the level of the detected frequency with the correct resolution bandwidth, with the antenna polarization and azimuth and the peak and average detector, which causes the maximum emission.
 - 8) Repeat steps 1) to 7) for the next antenna spot if the EUT is larger than the antenna beamwidth.



Use the following spectrum analyzer settings:

When spectrum scanned from 30MHz to 1GHz setting resolution bandwidth 120KHz and video bandwidth 300KHz:

EMI Test Receiver	Setting
Attenuation	Auto
RB	120KHz
VB	300KHz
Detector	QP
Trace	Max hold

When spectrum scanned above 1GHz setting resolution bandwidth 1MHz, video bandwidth 3MHz:

EMI Test Receiver	Setting
Attenuation	Auto
RB	1MHz
VB	3MHz
Detector	Peak
Trace	Max hold

When spectrum scanned above 1GHz setting resolution bandwidth 1MHz, video bandwidth 10Hz:

EMI Test Receiver	Setting
Attenuation	Auto
RB	1MHz
VB	10Hz
Detector	Average
Trace	Max hold

For Average Measurement:

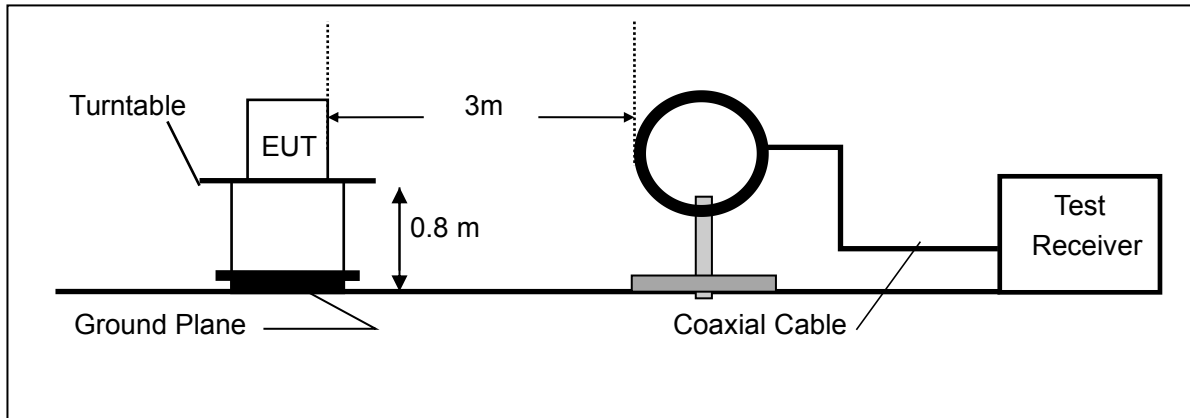
VBW=10Hz, when duty cycle is no less than 98 percent.

VBW ≥ 1/T, when duty cycle is less than 98 percent where T is the minimum transmission duration over which the transmitter is on and is transmitting at its maximum power control level for the tested mode of operation.

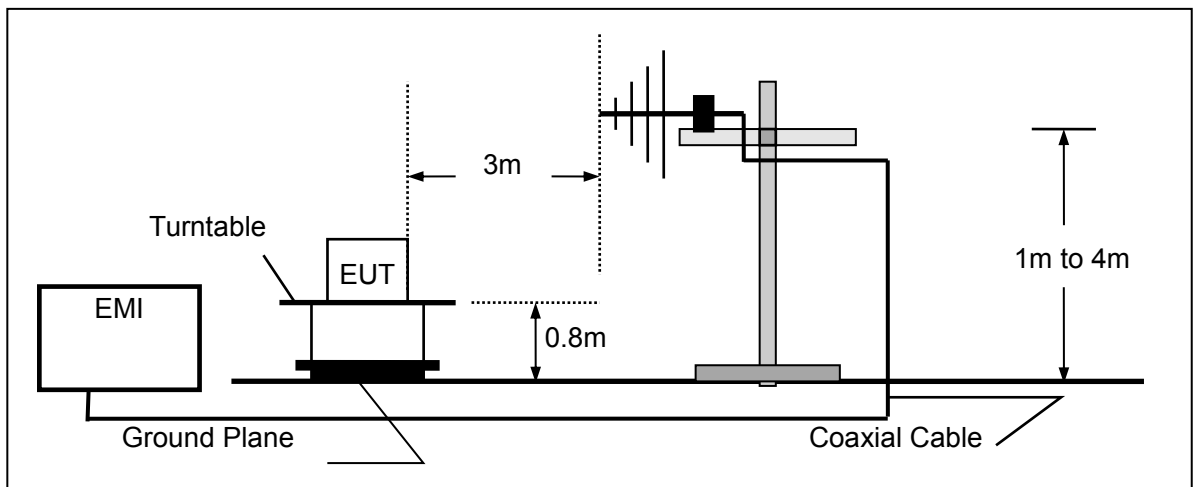
Band	Duty Cycle(%)	T (μ s)	1/T(KHz)	Average Correction Factor	VBW Setting
2406-2475	100	-	-	0	10Hz

7.2 Test SET-UP (Block Diagram of Configuration)

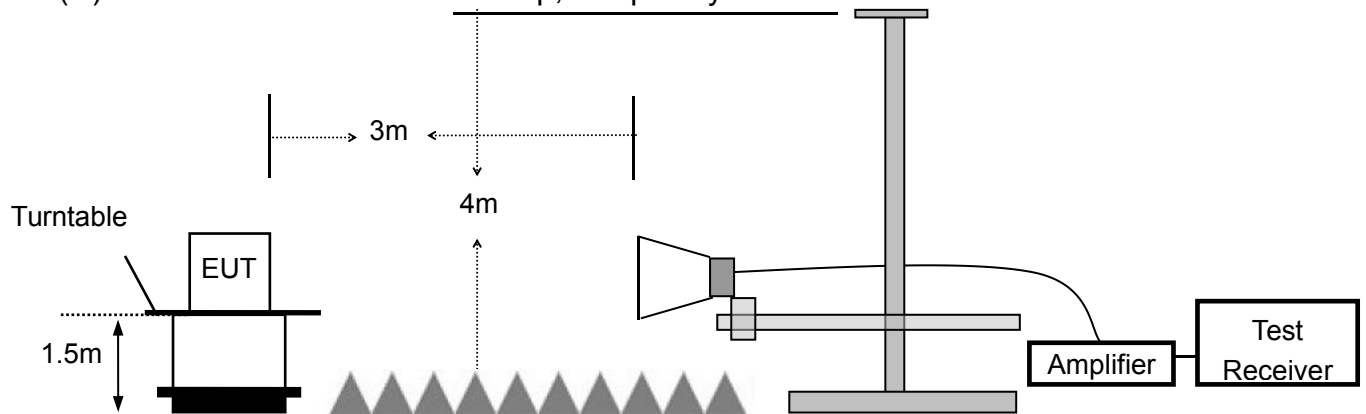
(A) Radiated Emission Test Set-Up, Frequency Below 30MHz



(B) Radiated Emission Test Set-Up, Frequency Below 1000MHz



(C) Radiated Emission Test Set-Up, Frequency above 1000MHz



7.3 Measurement Equipment Used:

Item	Equipment	Manufacturer	Model No.	Serial No.	Calibrated until
1.	EMI Test Receiver	Rohde & Schwarz	ESPI	100502	2020-11-28
2.	Pre-Amplifier	HP	8447D	2727A06172	2021-05-18
3.	Bilog Antenna	Schwarzbeck	VULB9163	VULB9163-588	2021-05-18
4.	Loop Antenna	Schwarzbeck	FMZB 1516	1516-141	2020-11-28
5.	Spectrum Analyzer	Rohde & Schwarz	FSV40	US40240623	2020-11-28
6.	Low noise Amplifiers	A-INFO	LA1018N4009	J101313052400 1	2021-05-18
7.	Horn antenna	A-INFO	LB-10180-SF	J203109061212 3	2021-05-18
8.	Broadband RF Power Amplifier	AEROFLEX	AEROFLEX10 0KHz-40GHz	J101313052400 1	2020-11-28
9.	DRG Horn Antenna	A.H.SYSTEMS	SAS-574	J203109061212 3	2020-11-28
10.	RF Cable	Gigalink Microwave	ZT40-2.92J-2. 92J-2m	N/A	2020-11-28
11.	RF Cable	Gigalink Microwave	ZT40-2.92J-2. 92J-0.3m	N/A	2020-11-28
12.	RF Cable	N/A	N/A	6#	2021-05-18
13.	RF Cable	N/A	N/A	1-1#	2021-05-18
14.	RF Cable	N/A	N/A	1-2#	2021-05-18
15.	RF Cable	N/A	N/A	7#	2021-05-18
16.	3m Semi-anechoic Chamber	chengyu	9m*6m*6m	N/A	2021-05-18
17.	Test Software	Farad	EZ-EMC Ver:ANCI-3A1	N/A	N/A

7.4 Radiated emission limit

The emissions from an intentional radiator shall not exceed the field strength levels specified in the following table 15.209(a):

Frequencies (MHz)	Field Strength (micorvolts/meter)	Measurement Distance (meters)
0.009~0.490	2400/F(KHz)	300
0.490~1.705	24000/F(KHz)	30
1.705~30.0	30	30
30~88	100	3
88~216	150	3
216~960	200	3
Above 960	500	3

15.205 Restricted bands of operation

MHz	MHz	MHz	GHz
0.090 - 0.110	16.42 - 16.423	399.9 - 410	4.5 - 5.15
¹ 0.495 - 0.505	16.69475 - 16.69525	608 - 614	5.35 - 5.46
2.1735 - 2.1905	16.80425 - 16.80475	960 - 1240	7.25 - 7.75
4.125 - 4.128	25.5 - 25.67	1300 - 1427	8.025 - 8.5
4.17725 - 4.17775	37.5 - 38.25	1435 - 1626.5	9.0 - 9.2
4.20725 - 4.20775	73 - 74.6	1645.5 - 1646.5	9.3 - 9.5
6.215 - 6.218	74.8 - 75.2	1660 - 1710	10.6 - 12.7
6.26775 - 6.26825	108 - 121.94	1718.8 - 1722.2	13.25 - 13.4
6.31175 - 6.31225	123 - 138	2200 - 2300	14.47 - 14.5
8.291 - 8.294	149.9 - 150.05	2310 - 2390	15.35 - 16.2
8.362 - 8.366	156.52475 - 156.52525	2483.5 - 2500	17.7 - 21.4
8.37625 - 8.38675	156.7 - 156.9	2690 - 2900	22.01 - 23.12
8.41425 - 8.41475	162.0125 - 167.17	3260 - 3267	23.6 - 24.0
12.29 - 12.293	167.72 - 173.2	3332 - 3339	31.2 - 31.8
12.51975 - 12.52025	240 - 285	3345.8 - 3358	36.43 - 36.5
12.57675 - 12.57725	322 - 335.4	3600 - 4400	(²)

- Remark 1. Emission level in dBuV/m=20 log (uV/m)
- : 2. Measurement was performed at an antenna to the closed point of EUT distance of meters.
 - 3. Only spurious frequency is permitted to locate within the Restricted Bands specified in provision of § 15.205, and the emissions located in restricted bands also comply with 15.209 limit.



7.5 Measurement Result

Below 30MHz:

Operation Mode:	TX	Test Date :	2020-10-28
Frequency Range:	9KHz~30MHz	Temperature :	25°C
Test Result:	PASS	Humidity :	58 %
Measured Distance:	3m	Test By:	Best

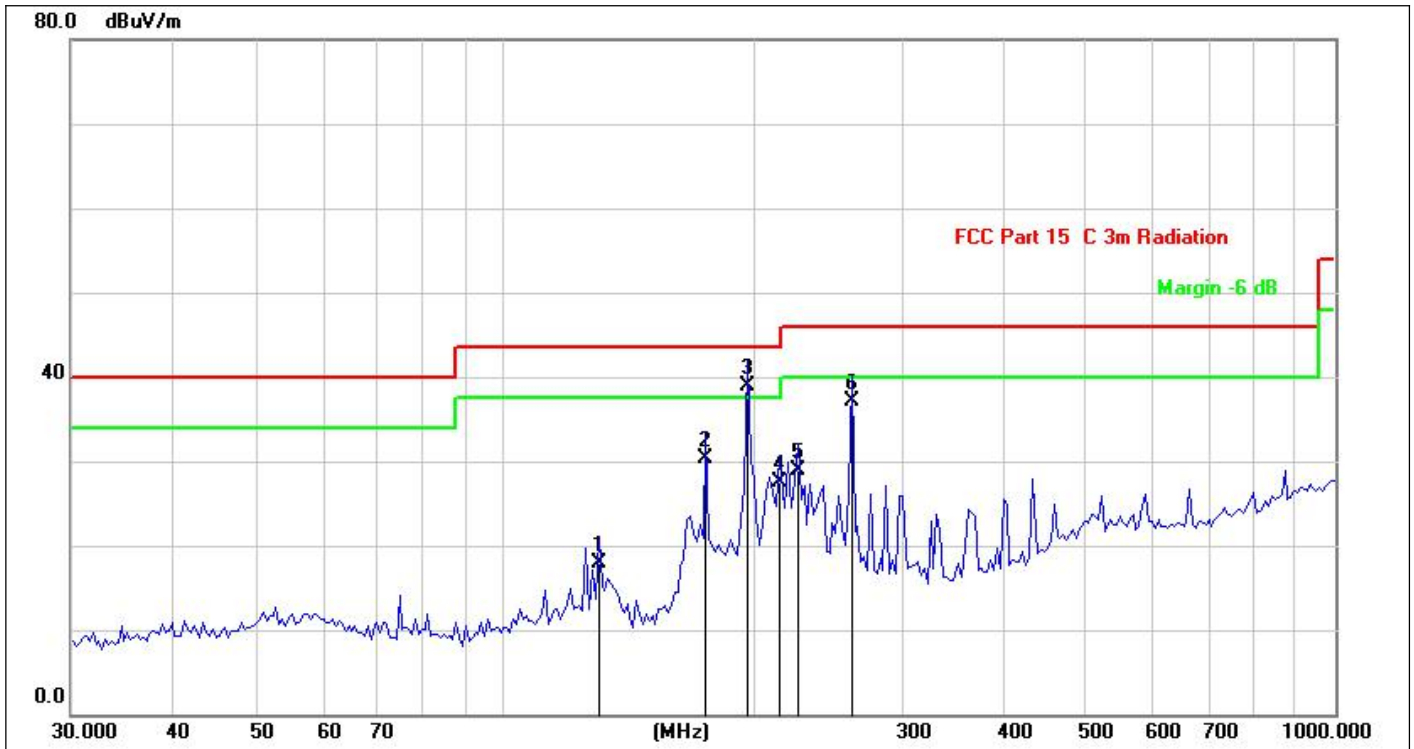
Freq. (MHz)	Ant.Pol. H/V	Emission Level (dBuV/m)	Limit 3m (dBuV/m)	Over (dB)
--	--	--	--	--

Note: The low frequency, which started from 9KHz-30MHz, was pre-scanned and the result which was 20dB lower than the limit line per 15.31(o) was not reported.

Below 1000MHz:

Pass.

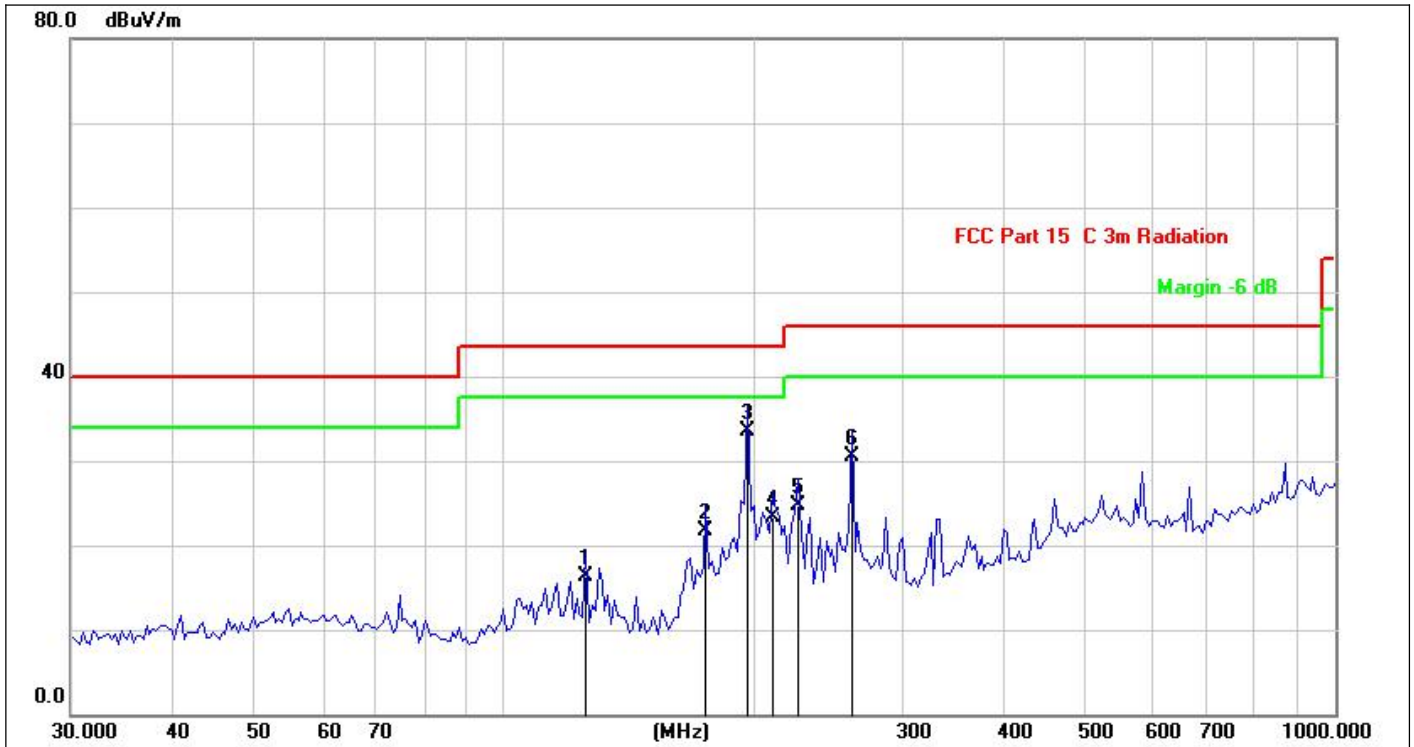
The data of the mode (GFSK 2440MHz) are recorded in the following pages.



Site:	843.3	Antenna::Horizontal	Temperature(C):26(C)
Limit:	FCC Part 15 C Conduction(QP)		Humidity(%):60%
EUT:	Game Controller	Test Time:	2020-10-28
M/N.:	Vader 2	Power Rating:	Battery 3.7V
Mode:	TX2440	Test Engineer:	Bast
Note:			

No.	Frequency (MHz)	Reading Level(dBuV)	Factor (dB)	Measurement(dBuV)	Limit (dBuV)	Over (dB)	Detector	Comment
1	129.6950	35.99	-17.99	18.00	43.50	-25.50	QP	
2	174.7301	47.61	-17.31	30.30	43.50	-13.20	QP	
3 *	195.8220	55.20	-16.30	38.90	43.50	-4.60	QP	
4	213.7634	42.99	-15.39	27.60	43.50	-15.90	QP	
5	225.3080	43.85	-14.85	29.00	46.00	-17.00	QP	
6	261.5164	50.94	-13.84	37.10	46.00	-8.90	QP	

*:Maximum data x:Over limit !:over margin



Site:	843.3	Antenna::	Vertical	Temperature(C):	26(C)
Limit:	FCC Part 15 C Conduction(QP)	Test Time:	2020-10-28	Humidity(%):	60%
EUT:	Game Controller	Power Rating:	Battery 3.7V	Test Engineer:	Bast
M/N.:	Vader 2				
Mode:	TX2440				
Note:					

No.	Frequency (MHz)	Reading Level(dBuV)	Factor (dB)	Measurement(dBuV)	Limit (dBuV)	Over (dB)	Detector	Comment
1	125.2260	33.80	-17.50	16.30	43.50	-27.20	QP	
2	174.7301	39.11	-17.31	21.80	43.50	-21.70	QP	
3 *	195.8220	49.80	-16.30	33.50	43.50	-10.00	QP	
4	210.0482	38.97	-15.57	23.40	43.50	-20.10	QP	
5	225.3080	39.65	-14.85	24.80	46.00	-21.20	QP	
6	261.5164	44.34	-13.84	30.50	46.00	-15.50	QP	

*:Maximum data x:Over limit !:over margin



Above 1000MHz~10th Harmonics:

Operation Mode: TX Mode (CH00: 2406MHz) Test Date : 2020-10-28
 Frequency Range: 1-25GHz Temperature : 25°C
 Test Result: PASS Humidity : 58 %
 Measured Distance: 3m Test By: Best

Freq. (MHz)	Ant. Pol. H/V	Reading Level(dBuV/m)		Correct Factor dB	Emission Level(dBuV/m)		Limit 3m(dBuV/m)		Over(dB)	
		PK	AV		PK	AV	PK	AV	PK	AV
4812	V	94.02	73.32	-32.3	60.25	41.02	74	54	-13.75	-12.98
7218	V	95.34	76.61	-37.2	58.14	39.41	74	54	-15.86	-14.59
9624	V	96.94	78.05	-39.8	57.14	38.25	74	54	-16.86	-15.75
12030	V	96.73	77.48	-40.5	56.23	36.98	74	54	-17.77	-17.02
14436	V	97.84	78.72	-41.7	56.14	37.02	74	54	-17.86	-16.98
16820	V	95.78	76.11	-40	55.78	36.11	74	54	-18.22	-17.89
4812	H	91.91	72.78	-31.6	60.31	41.18	74	54	-13.69	-12.82
7218	H	93.7	74.64	-35.5	58.2	39.14	74	54	-15.8	-14.86
9624	H	95.72	76.47	-38.3	57.42	38.17	74	54	-16.58	-15.83
12030	H	95.21	75.85	-39	56.21	36.85	74	54	-17.79	-17.15
14436	H	97.85	78.08	-42	55.85	36.08	74	54	-18.15	-17.92
16820	H	94.62	75.42	-39.3	55.32	36.12	74	54	-18.68	-17.88

Other harmonics emissions are lower than 20dB below the allowable limit.

- Note:**
- (1) All Readings are Peak Value and AV.
 - (2) Emission Level= Reading Level+ Probe Factor +Cable Loss.
 - (3) The average measurement was not performed when the peak measured data under the limit of average detection.
 - (4) Measuring frequencies from 1GHz to 25GHz.



Operation Mode: TX Mode (CH02: 2440MHz) Test Date : 2020-10-28
 Frequency Range: 1-25GHz Temperature : 25°C
 Test Result: PASS Humidity : 58 %
 Measured Distance: 3m Test By: Best

Freq. (MHz)	Ant. Pol. H/V	Reading Level(dBuV/m)		Correct Factor dB	Emission Level(dBuV/m)		Limit 3m(dBuV/m)		Margin(dB)	
		PK	AV		PK	AV	PK	AV	PK	AV
4880	V	93.55	74.27	-32.3	61.25	41.97	74	54	-12.75	-12.03
7320	V	96.43	77.78	-37.2	59.23	40.58	74	54	-14.77	-13.42
9760	V	97.01	77.86	-39.8	57.21	38.06	74	54	-16.79	-15.94
12200	V	96.82	77.71	-40.5	56.32	37.21	74	54	-17.68	-16.79
14640	V	97.71	78.15	-41	56.71	37.15	74	54	-17.29	-16.85
17080	V	96.79	77.22	-41.1	55.69	36.12	74	54	-18.31	-17.88
4880	H	92.76	74.42	-31.6	61.16	42.82	74	54	-12.84	-11.18
7320	H	94.66	75.76	-35.5	59.16	40.26	74	54	-14.84	-13.74
9760	H	95.65	76.44	-38.3	57.35	38.14	74	54	-16.65	-15.86
12200	H	95.32	76.13	-39	56.32	37.13	74	54	-17.68	-16.87
14640	H	97.32	78.44	-42	55.32	36.44	74	54	-18.68	-17.56
17080	H	97.19	77.76	-41.5	55.69	36.26	74	54	-18.31	-17.74

Other harmonics emissions are lower than 20dB below the allowable limit.

- Note:**
- (1) All Readings are Peak Value and AV.
 - (2) Emission Level= Reading Level+ Probe Factor +Cable Loss.
 - (3) The average measurement was not performed when the peak measured data under the limit of average detection.
 - (4) Measuring frequencies from 1GHz to 25GHz.



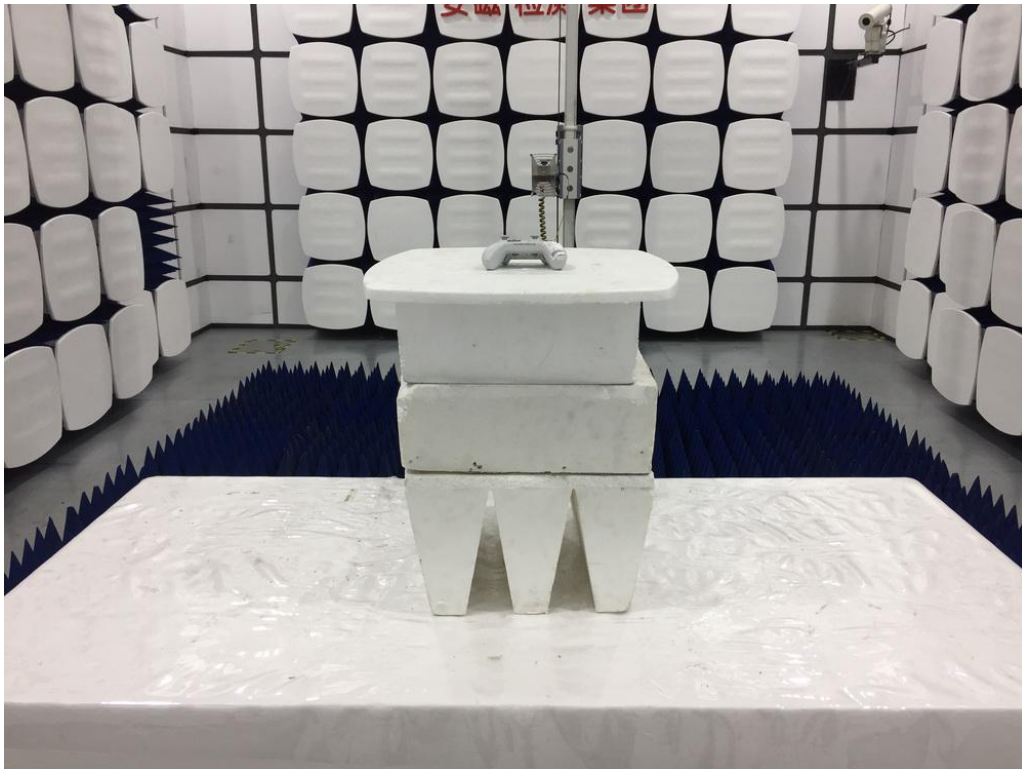
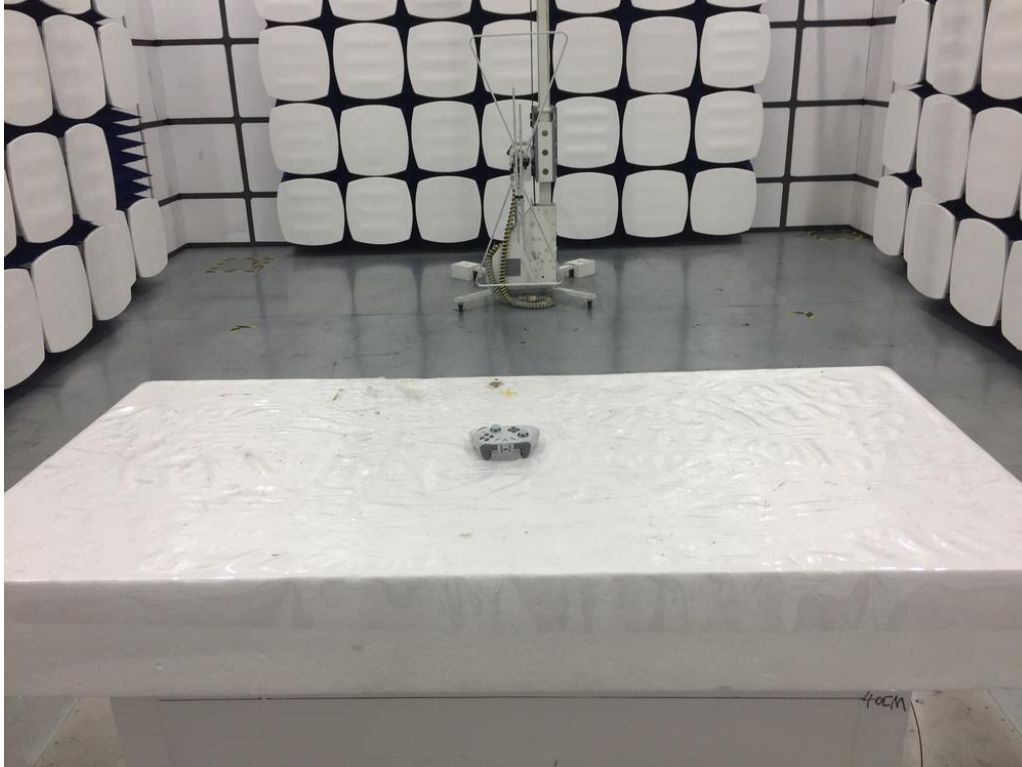
Operation Mode: TX Mode (CH04: 2475MHz) Test Date : 2020-10-28
 Frequency Range: 1-25GHz Temperature : 25°C
 Test Result: PASS Humidity : 58 %
 Measured Distance: 3m Test By: Best

Freq. (MHz)	Ant. Pol.	Reading Level(dBuV/m)		Correct Factor dB	Emission Level(dBuV/m)		Limit 3m(dBuV/m)		Margin(dB)	
		PK	AV		PK	AV	PK	AV	PK	AV
4950	V	92.53	73.86	-32.3	60.23	41.56	74	54	-13.77	-12.44
7425	V	95.67	76.22	-37.2	58.47	39.02	74	54	-15.53	-14.98
9900	V	96.05	77.05	-39.8	56.25	37.25	74	54	-17.75	-16.75
12375	V	96.64	77.63	-40.5	56.14	37.13	74	54	-17.86	-16.87
14850	V	96.63	77.47	-41	55.63	36.47	74	54	-18.37	-17.53
17325	V	96.49	77.68	-41.1	55.39	36.58	74	54	-18.61	-17.42
4950	H	91.78	73.02	-31.6	60.18	41.42	74	54	-13.82	-12.58
7425	H	93.76	75.06	-35.5	58.26	39.56	74	54	-15.74	-14.44
9900	H	94.62	75.5	-38.3	56.32	37.2	74	54	-17.68	-16.8
12375	H	95.36	76.12	-39	56.36	37.12	74	54	-17.64	-16.88
14850	H	98.03	78.74	-42	56.03	36.74	74	54	-17.97	-17.26
17325	H	96.79	77.75	-41.5	55.29	36.25	74	54	-18.71	-17.75

Other harmonics emissions are lower than 20dB below the allowable limit.

- Note:**
- (1) All Readings are Peak Value and AV.
 - (2) Emission Level= Reading Level+ Probe Factor +Cable Loss.
 - (3) The average measurement was not performed when the peak measured data under the limit of average detection.
 - (4) Measuring frequencies from 1GHz to 25GHz.

7.6 Radiated Measurement Photos:



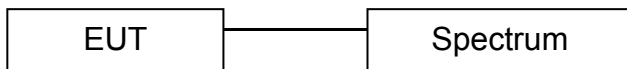


8. 6dB Bandwidth Measurement

8.1 Measurement Procedure

The EUT was operating in Bluetooth mode or could be controlled its channel. Printed out the test result from the spectrum by hard copy function.

8.2 Test SET-UP (Block Diagram of Configuration)



8.3 Measurement Equipment Used:

EQUIPMENT TYPE	MFR	MODEL NUMBER	SERIAL NUMBER	CALIBRATED UNTIL
Spectrum Analyzer	Rohde & Schwarz	FSV40	US40240623	2020-11-28
Coaxial Cable	Gigalink Microwave	ZT40	19022092	2020-11-28
Antenna Connector	ARTHUR-YANG	2244-N1TG1	N/A	2020-11-28

Remark: The temporary antenna connector is soldered on the PCB board in order to perform conducted tests and this temporary antenna connector is listed in the equipment list.

8.4 Limit

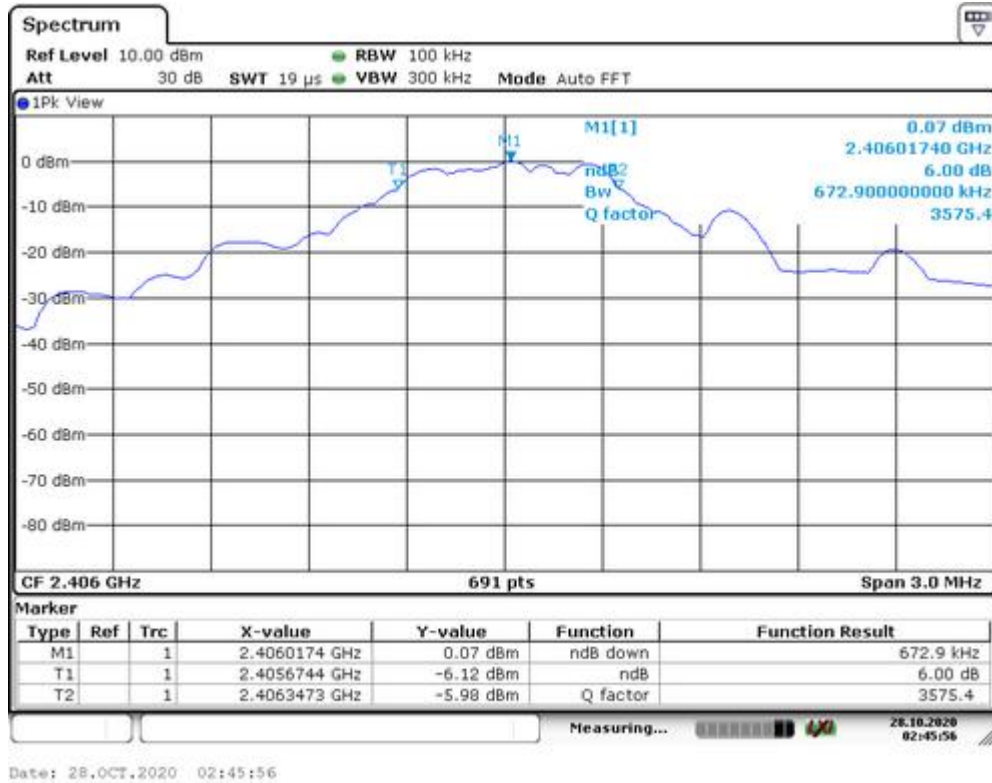
The minimum 6dB bandwidth shall be at least 500kHz.

8.5 Measurement Results:

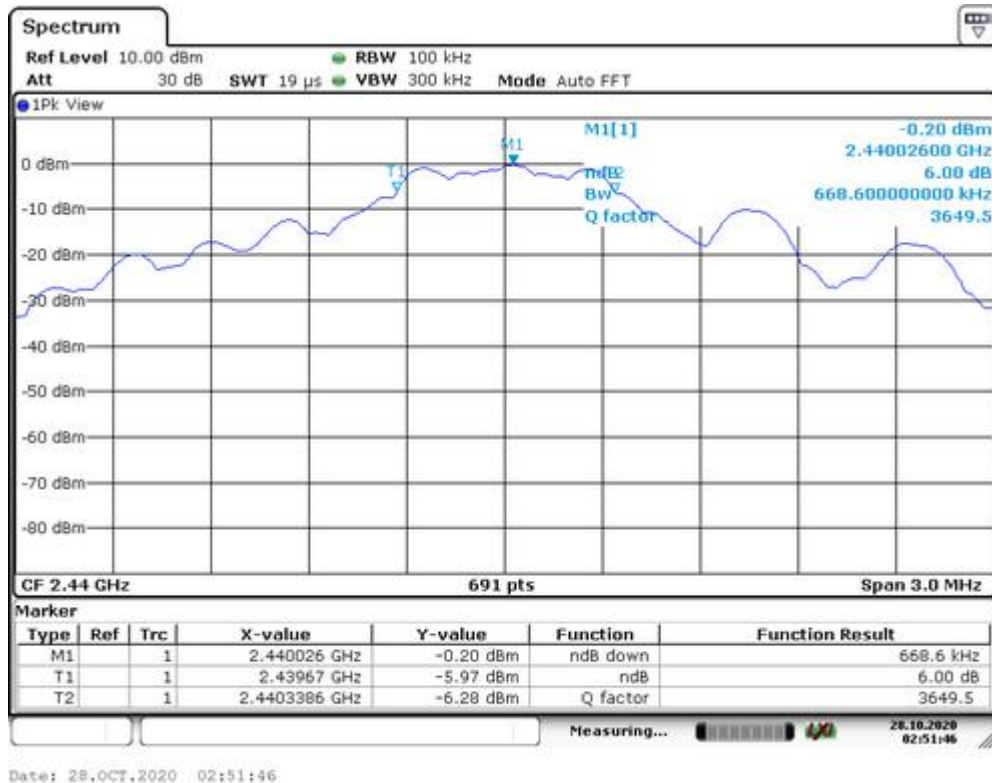
Refer to attached data chart.

Spectrum Detector:	PK	Test Date :	2020-10-28
Test By:	Best	Temperature :	24 °C
Test Result:	PASS	Humidity :	53 %

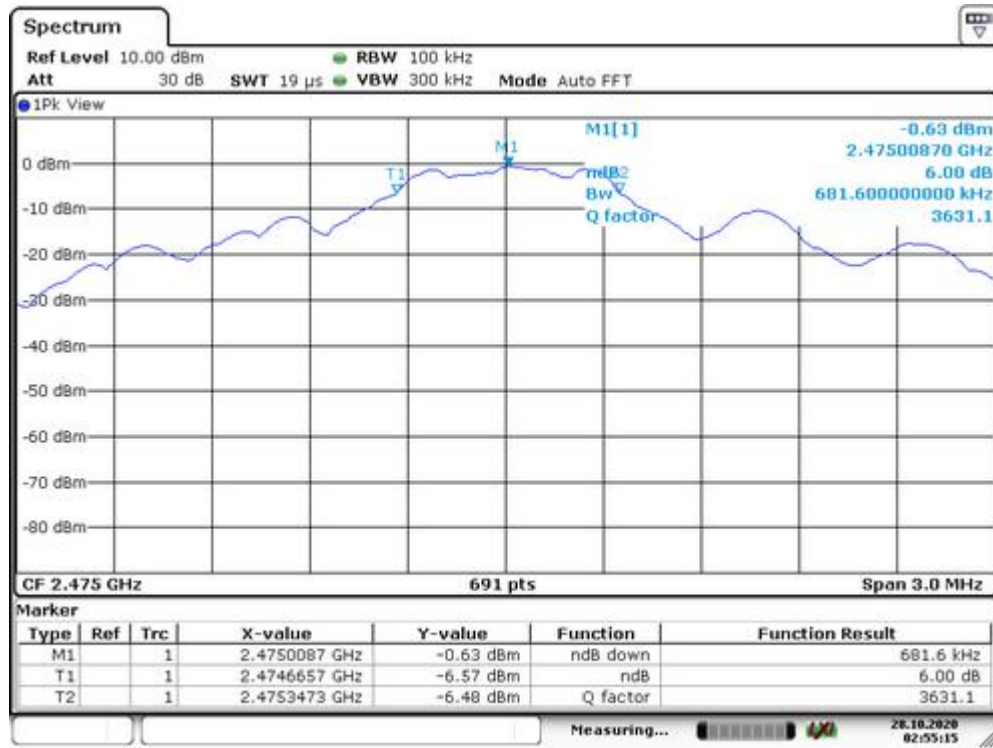
Channel number	Channel frequency (MHz)	Measurement level (KHz)	Required Limit (KHz)
00	2406	673	>500
02	2440	667	>500
04	2475	682	>500



6dB NVNT 2440MHz Ant1



6dB NVNT 2475MHz Ant1



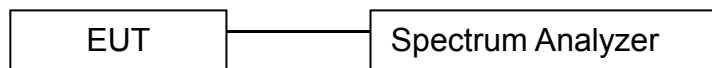
Date: 28.OCT.2020 02:55:15

9. MAXIMUM PEAK OUTPUT POWER TEST

9.1 Measurement Procedure

- a. The Transmitter output (antenna port) was connected to the spectrum Analyzer.
- b. Turn on the EUT and then record the peak power value.
- c. Repeat above procedures on all channels needed to be tested.

9.2 Test SET-UP (Block Diagram of Configuration)



9.3 Measurement Equipment Used:

EQUIPMENT TYPE	MFR	MODEL NUMBER	SERIAL NUMBER	CALIBRATED UNTIL
Spectrum Analyzer	Rohde & Schwarz	FSV40	US40240623	2020-11-28
Coaxial Cable	Gigalink Microwave	ZT40	19022092	2020-11-28
Antenna Connector	ARTHUR-YANG	2244-N1TG1	N/A	2020-11-28

Remark: The temporary antenna connector is soldered on the PCB board in order to perform conducted tests and this temporary antenna connector is listed in the equipment list.

9.4 Peak Power output limit

The maximum peak power shall be less 1Watt.

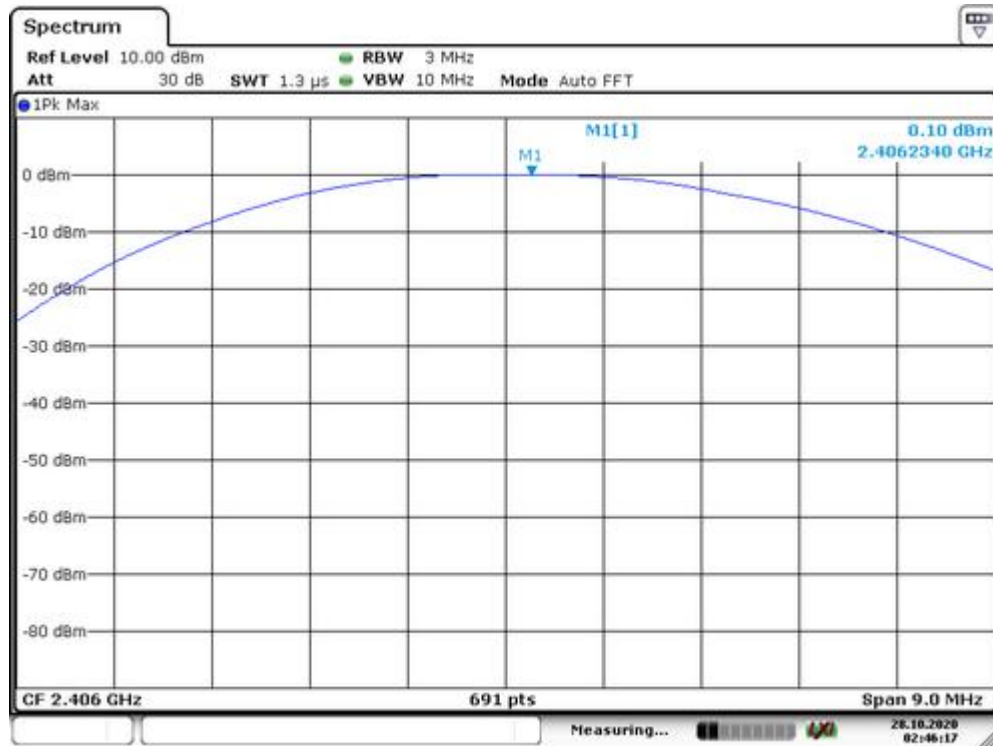
9.5 Measurement Results:

Refer to attached data chart.

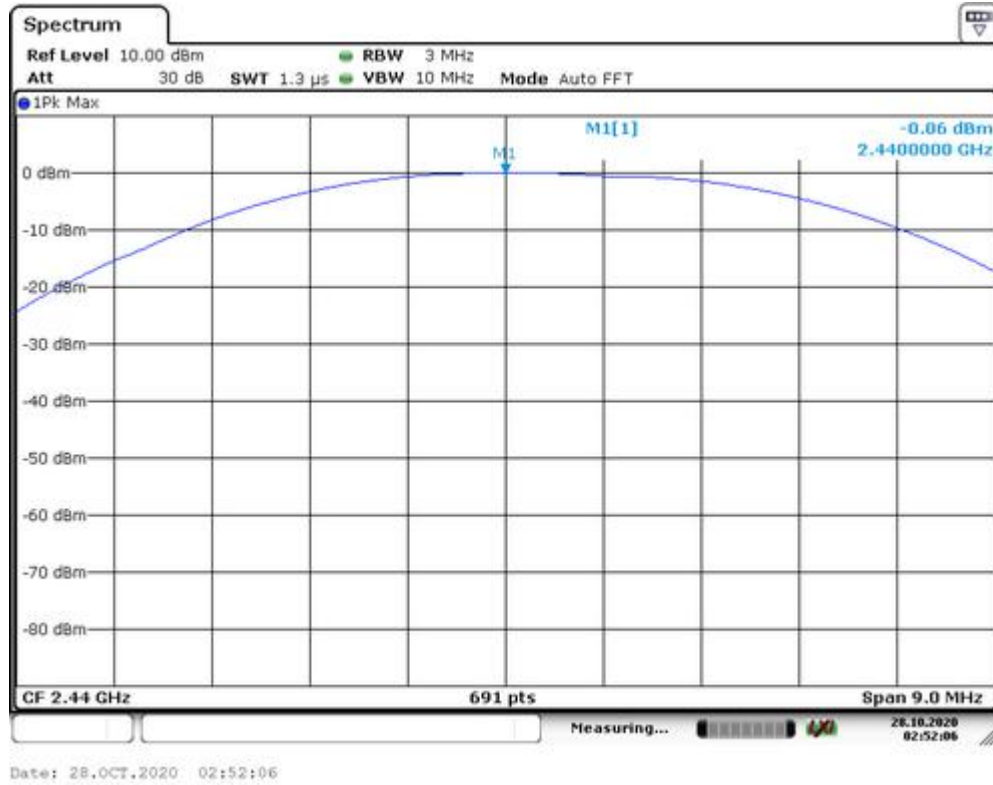
Spectrum Detector:	PK	Test Date :	2020-10-28
Test By:	Best	Temperature :	24 °C
Test Result:	PASS	Humidity :	53 %

Channel number	Channel Frequency (MHz)	Peak Power output(dBm)	Peak Power output(mW)	Peak Power Limit(W)	Pass/Fail
0	2406	0.1	1.023	1W(30dBm)	PASS
2	2440	-0.86	0.820	1W(30dBm)	PASS
4	2475	-0.5	0.891	1W(30dBm)	PASS

Power NVNT 2406MHz Ant1



Date: 28.OCT.2020 02:46:16



Power NVNT 2475MHz Ant1

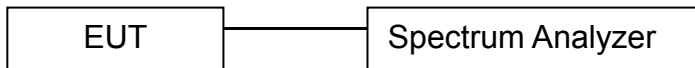


10. Power Spectral Density Measurement

10.1 Measurement Procedure

The EUT was operating in Bluetooth mode or could be controlled its channel. Printed out the test result from the spectrum by hard copy function.

10.2 Test SET-UP (Block Diagram of Configuration)



10.3 Measurement Equipment Used:

EQUIPMENT TYPE	MFR	MODEL NUMBER	SERIAL NUMBER	CALIBRATED UNTIL
Spectrum Analyzer	Rohde & Schwarz	FSV40	US40240623	2020-11-28
Coaxial Cable	Gigalink Microwave	ZT40	19022092	2020-11-28
Antenna Connector	ARTHUR-YANG	2244-N1TG1	N/A	2020-11-28

Remark: The temporary antenna connector is soldered on the PCB board in order to perform conducted tests and this temporary antenna connector is listed in the equipment list.

10.4 Measurement Procedure

10.4.1 The RF output of EUT was connected to the spectrum analyzer by RF cable and attenuator. The path loss was compensated to the results for each measurement.

10.4.2. Set to the maximum power setting and enable the EUT transmit continuously.

10.4.3. Make the measurement with the spectrum analyzer's resolution bandwidth (RBW) = 3 kHz. Video bandwidth VBW = 10 kHz In order to make an accurate measurement, set the span to 1.5 times DTS Channel Bandwidth. (6dB BW)

10.4.4. Detector = peak, Sweep time = auto couple, Trace mode = max hold, Allow trace to fully stabilize. Use the peak marker function to determine the maximum power level.

10.4.5. Measure and record the results in the test report.

10.4.6. The Measured power density (dBm)/ 100KHz is a reference level and used as 20dBc down limit line for Conducted Band Edges and Conducted Spurious Emission.

**10.5 Measurement Results:**

The following table is the setting of spectrum analyzer.

Spectrum analyzer	Setting
Attenuation	Auto
Span Frequency	Set the span to 1.5 times the DTS bandwidth.
RB	3KHz
VB	10KHz
Detector	Peak
Trace	Max hold
Sweep Time	Automatic

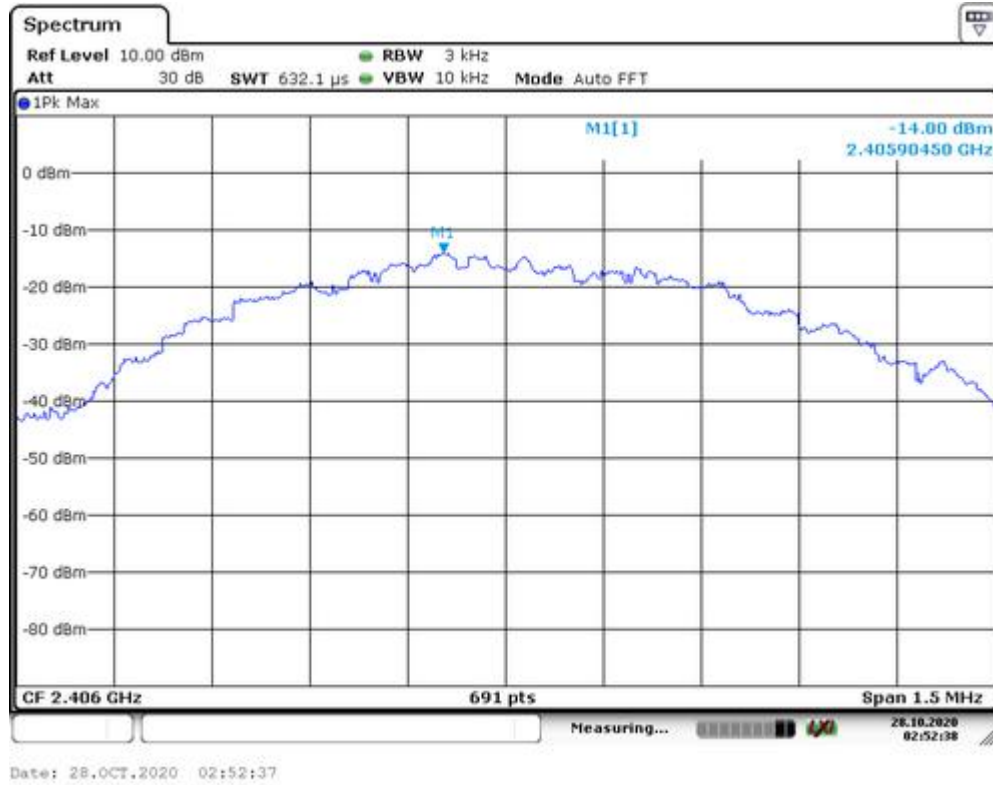
Refer to attached data chart.

Spectrum Detector:	PK	Test Date :	2020-10-28
Test By:	Best	Temperature :	24 °C
Test Result:	PASS	Humidity :	53 %

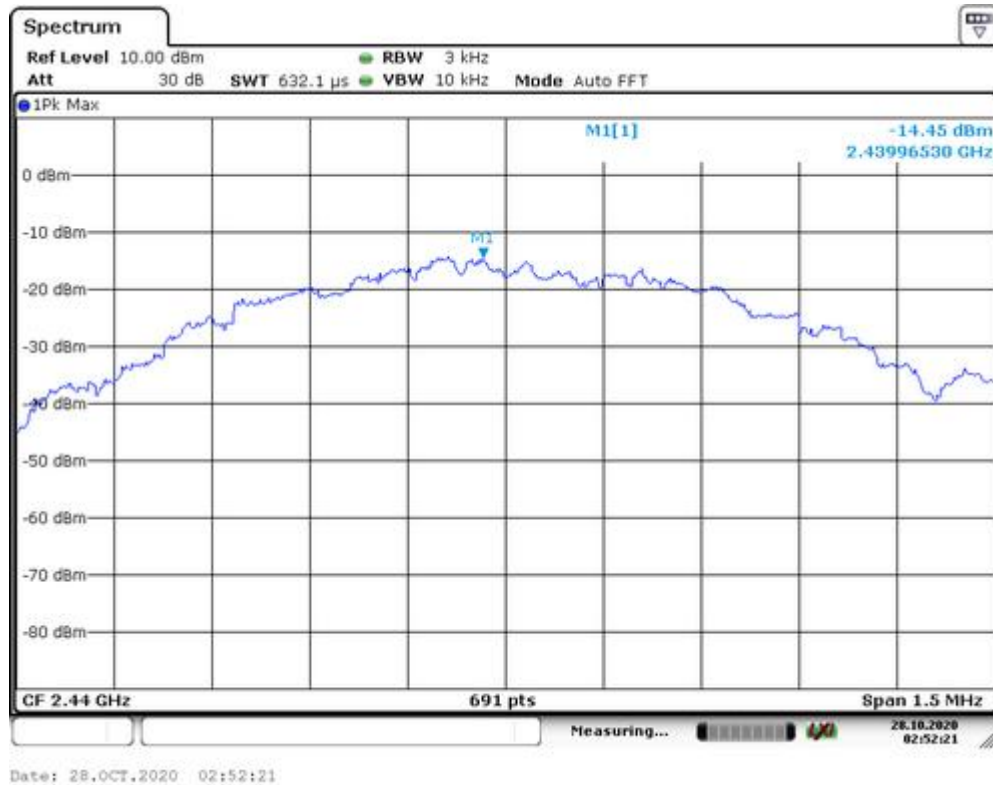
Channel number	Channel frequency (MHz)	Measurement level (dBm)	Required Limit (dBm/3kHz)	Pass/Fail
		PSD/3kHz		
00	2406	-14.80	8	PASS
02	2440	-14.45	8	PASS
04	2475	-14.88	8	PASS

Note:

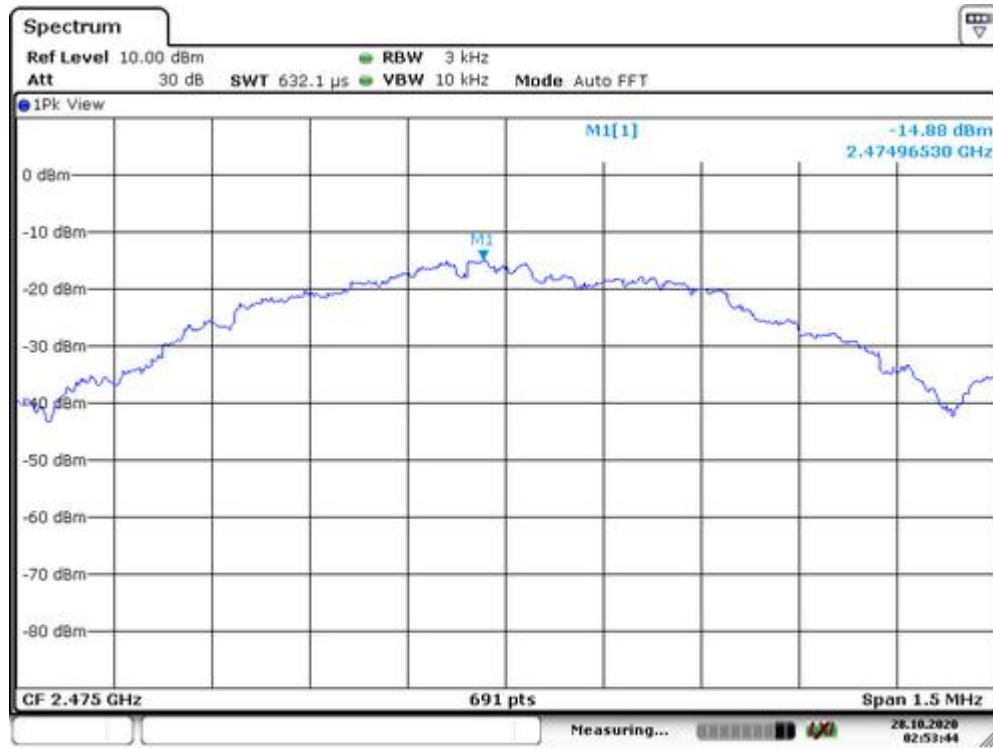
1. Measured power density(dBm) has offset with cable loss.
2. The measured power density(dBm)/100KHz is reference level and used as 20dBc down for Conducted Band Edges and Conducted Spurious Emission limit line.



PSD NVNT 2440MHz Ant1



PSD NVNT 2475MHz Ant1



Date: 28.OCT.2020 02:53:43

11. Band EDGE test

11.1 Measurement Procedure

For Conducted Test

1. The transmitter output is connected to a spectrum analyzer. The resolution bandwidth is set to 100KHz. The video bandwidth is set to 300KHz.
2. The spectrum from 30MHz to 26 GHz is investigated with the transmitter set to the lowest, middle, and highest channels.

EMI Test Receiver	Setting
Attenuation	Auto
RBW	100KHz
VBW	300KHz
Detector	Peak
Trace	Max hold

For Radiated emission Test

The EUT was placed on a styrofoam table which is 1.5m above ground plane.

The measurement procedure at the band edges was simplified by performing the measurement in just one plot. Both, the in-band-emission and the unwanted emission were encompassed by the span. After trace stabilization, the maximum peak was determined by a peak detector and the value was marked by an appropriate limit line. The second limit line, which is 20dB below the first, marks the limit for the emissions in the unrestricted band. A maximum-peak-detector marks the highest emission in the unrestricted band next to the band edge.

The measurements were performed at the lower end of the 2.4GHz band.

Use the following spectrum analyzer settings:

For Restricted Band, When spectrum scanned above 1GHz setting resolution bandwidth 1MHz, video bandwidth 3MHz:

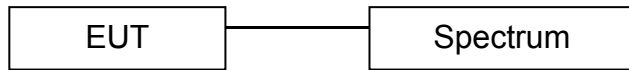
EMI Test Receiver	Setting
Attenuation	Auto
RBW	1MHz
VBW	3MHz
Detector	Peak
Trace	Max hold

For Non-Restricted Band, When spectrum scanned above 1GHz setting resolution bandwidth 100KHz, video bandwidth 300KHz:

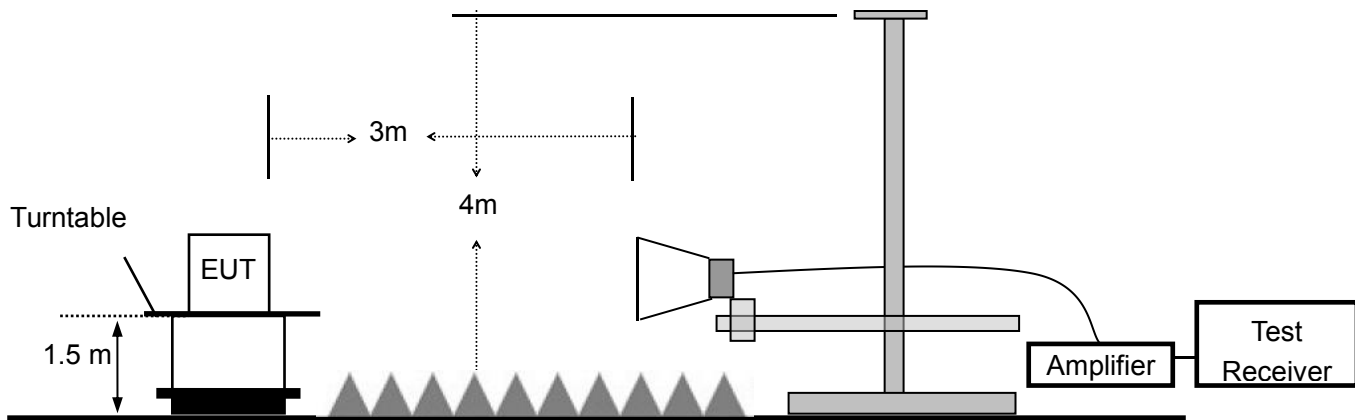
EMI Test Receiver	Setting
Attenuation	Auto
RBW	100KHz
VBW	300KHz
Detector	Peak
Trace	Max hold

11.2 Test SET-UP (Block Diagram of Configuration)

For Conducted Test



For Radiated emission Test



11.3 Measurement Equipment Used:

For Conducted Test

EQUIPMENT TYPE	MFR	MODEL NUMBER	SERIAL NUMBER	CALIBRATED UNTIL
Spectrum Analyzer	Rohde & Schwarz	FSV40	US40240623	2020-11-28
Coaxial Cable	Gigalink Microwave	ZT40	19022092	2020-11-28
Antenna Connector	ARTHUR-YANG	2244-N1TG1	N/A	2020-11-28

Remark: The temporary antenna connector is soldered on the PCB board in order to perform conducted tests and this temporary antenna connector is listed in the equipment list.

For Radiated emission Test

Item	Equipment	Manufacturer	Model No.	Serial No.	Calibrated Until
1	Signal Analyzer	Rohde & Schwarz	FSV40	US40240623	2020-11-28
2	Broadband RF Power Amplifier	AEROFLEX	AEROFLEX100KHz-40G Hz	J1013130524 001	2020-11-28
3	DRG Horn Antenna	A.H.SYSTEMS	SAS-574	J2031090612 123	2020-11-28
4	RF Cable	Gigalink Microwave	ZT40-2.92J-2.92J-2m	N/A	2020-11-28
5	RF Cable	Gigalink Microwave	ZT40-2.92J-2.92J-0.3m	N/A	2020-11-28



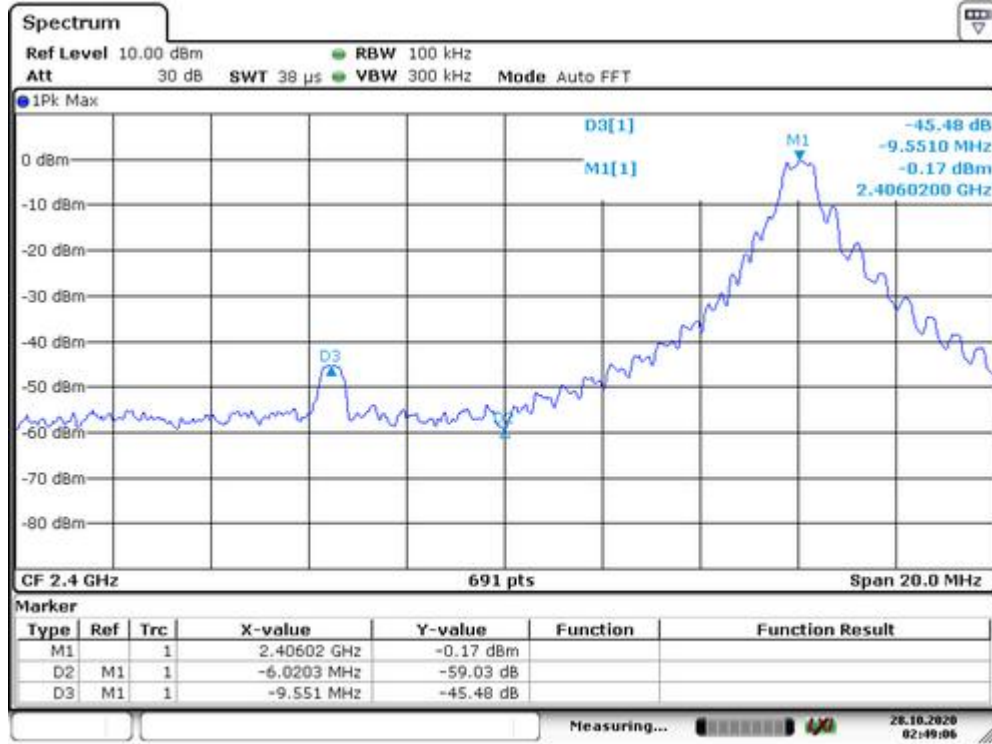
11.4 Measurement Results:

Refer to attached data chart.

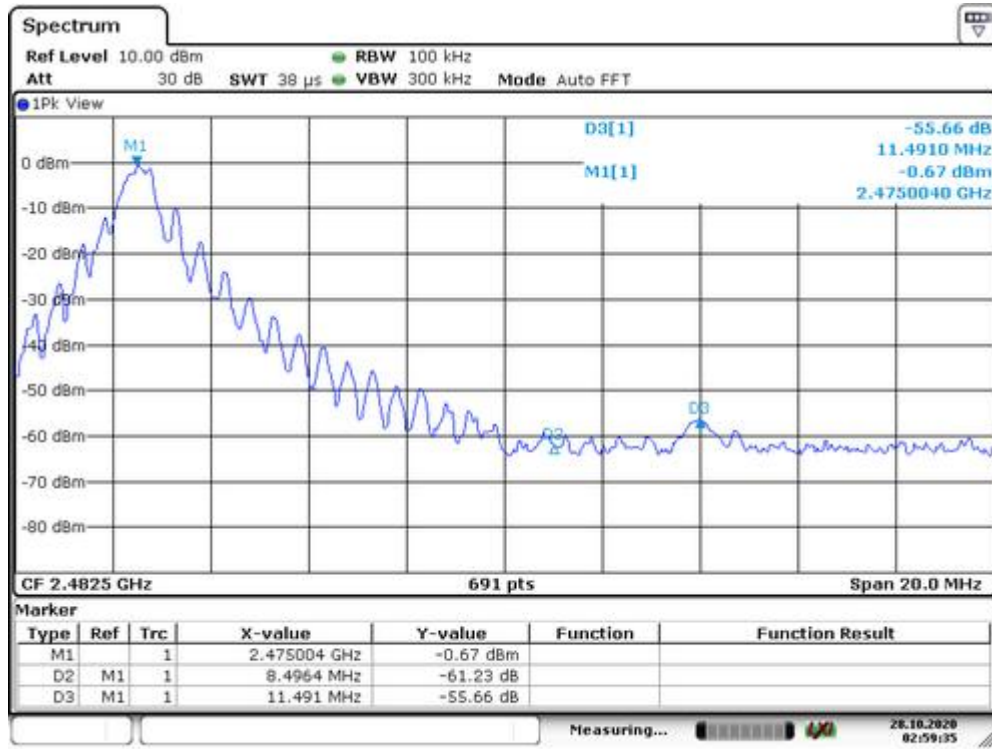
Spectrum Detector:	PK	Test Date :	2020-10-28
Test By:	Best	Temperature :	24 °C
Test Result:	PASS	Humidity :	53 %

1. Conducted Test

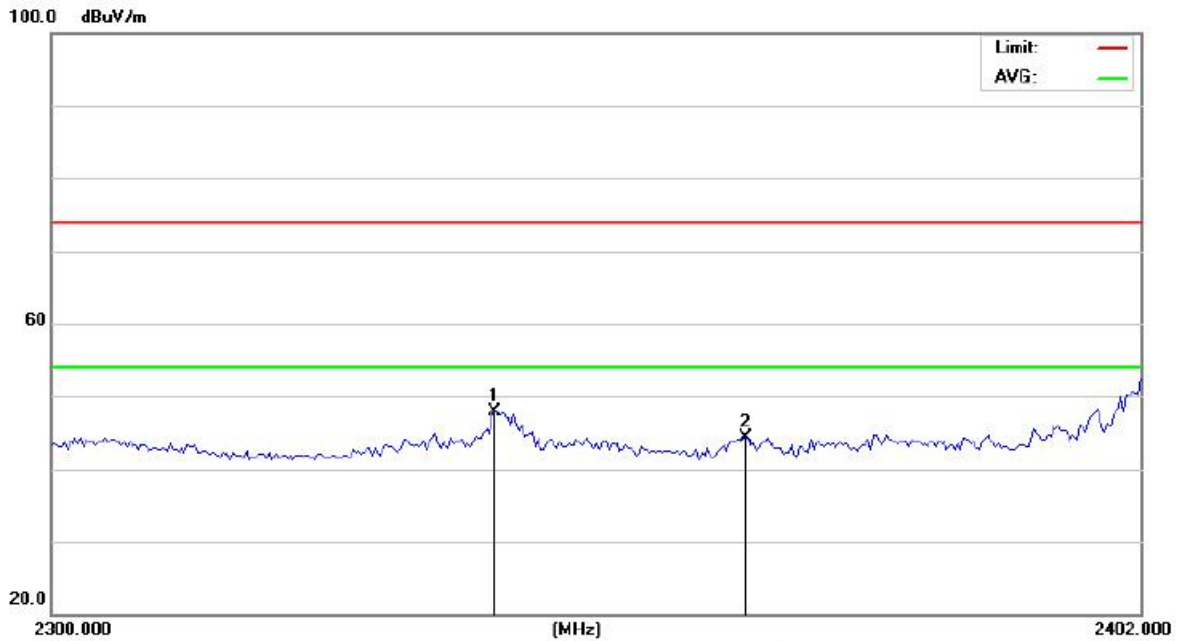
Frequency (MHz)	Peak Power Output(dBm)	Result of Band edge(dBc)	Band edge Limit(dBc)
2396.469	-0.17	45.48	>20dBc
2486.495	-0.67	55.66	>20dBc



Date: 28.OCT.2020 02:49:06



Date: 28.OCT.2020 02:59:34



Site 843

Polarization: *Vertical*

Temperature: 26.5(C)

Limit: FCC Part 15 C 3m Above1G(Peak)

Power: Battery 3.7V

Humidity: 60.6 %

Mode: TX2406

Note:

No.	Mk.	Freq. MHz	Reading Level dBuV	Correct Factor dB	Measure- ment dBuV/m	Limit dB/m	Over dB	Detector	Antenna cm	Table Battery 3.7V degree	Comment
1	*	2341.031	53.04	-5.15	47.89	74.00	-26.11	peak			
2		2364.769	49.22	-4.99	44.23	74.00	-29.77	peak			

*:Maximum data x:Over limit !:over margin

<Reference Only



12 Antenna Application

12.1 Antenna requirement

The EUT'S antenna is met the requirement of FCC part 15C section 15.203 and 15.247.

FCC part 15C section 15.247 requirements:

Systems operating in the 2406-2475MHz band that are used exclusively for fixed, point-to-point operations may employ transmitting antennas with directional gain greater than 6dBi provided the maximum peak output power of the intentional radiator is reduced by 1dB for every 3dB that the directional gain of the antenna exceeds 6dBi.

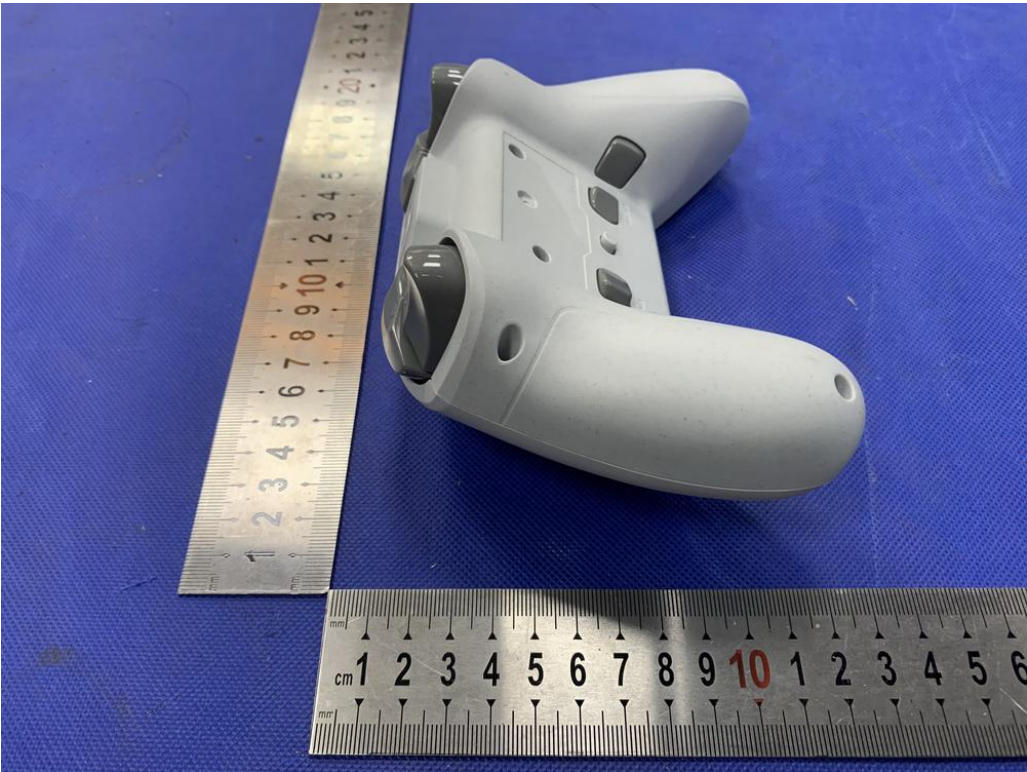
12.2 Result

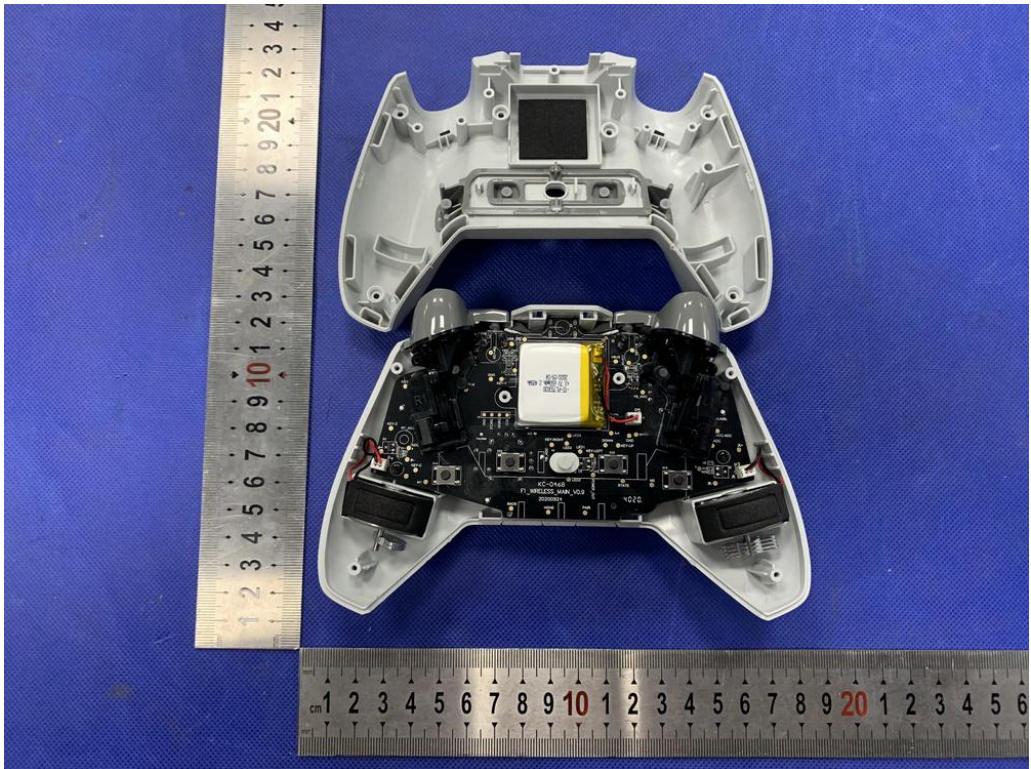
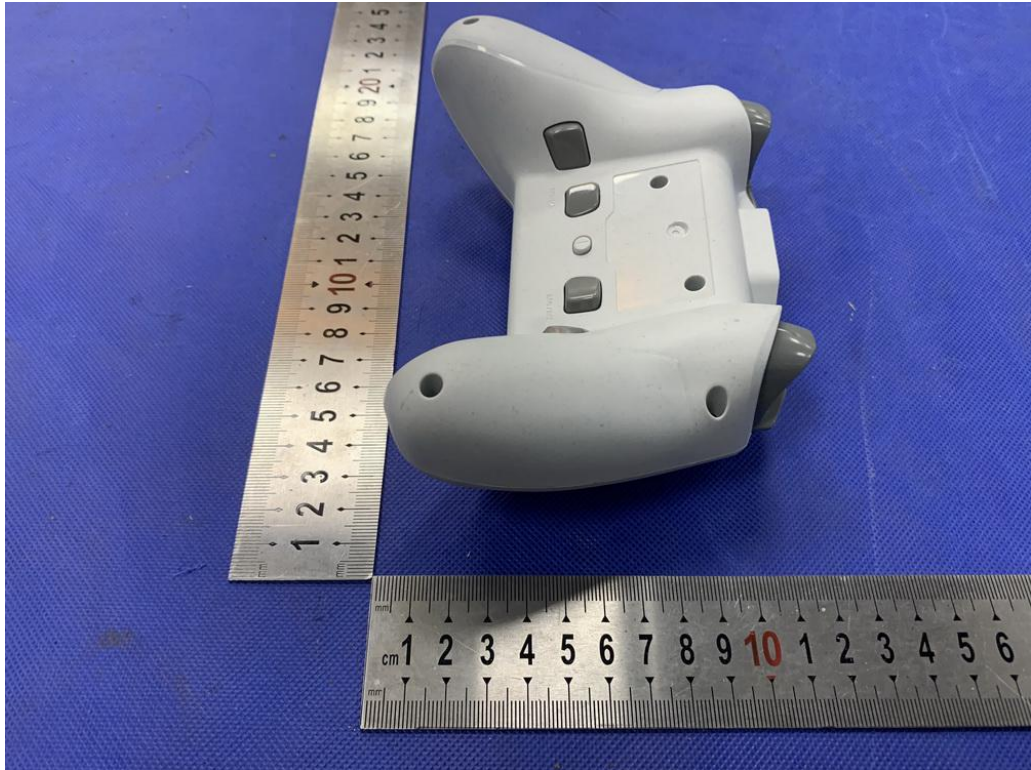
The EUT's antenna, permanent attached antenna, used a ceramic antenna and integrated on PCB, The antenna's gain is 0.11dBi and meets the requirement.

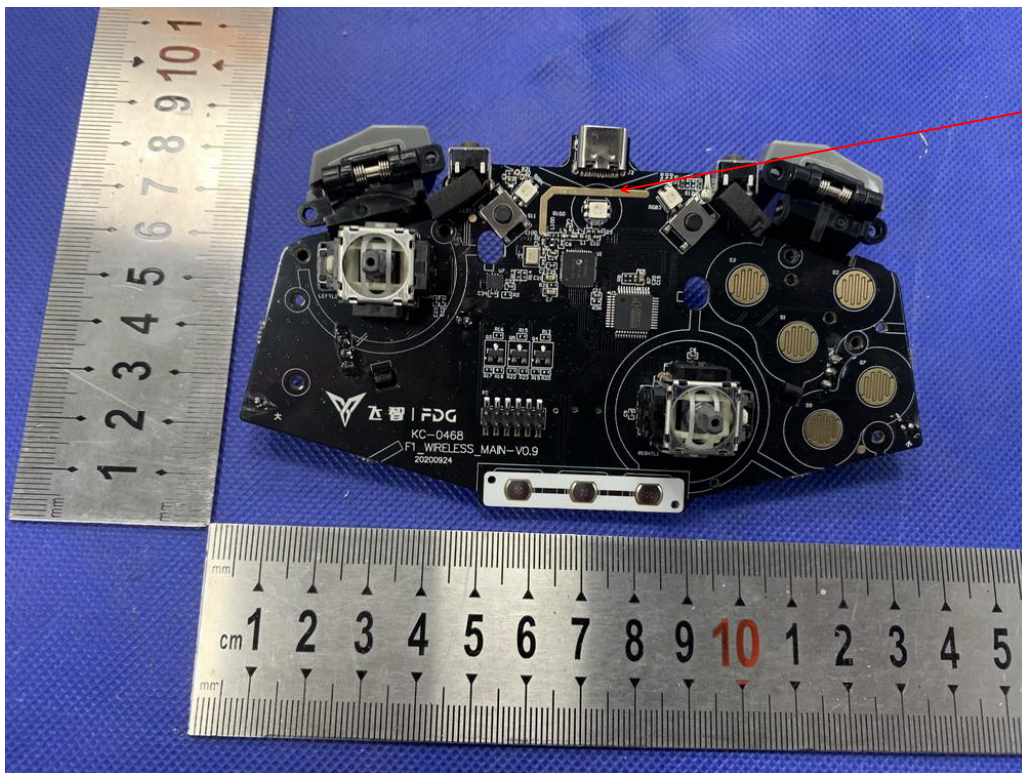


APPENDIX I (Photos of EUT)

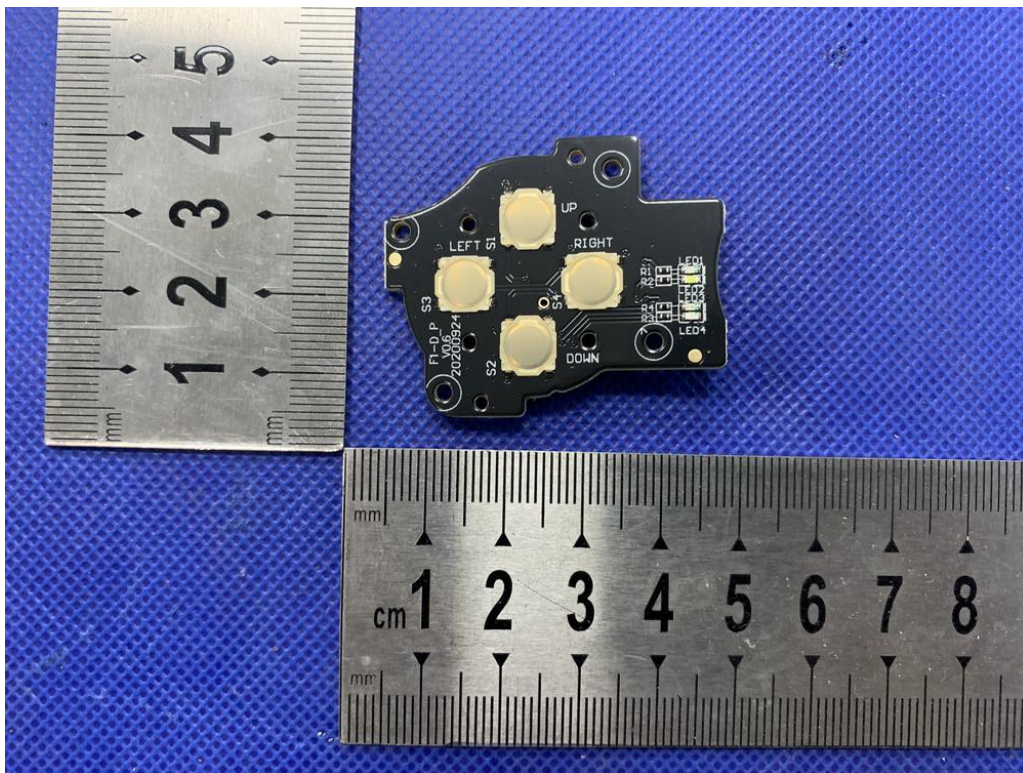
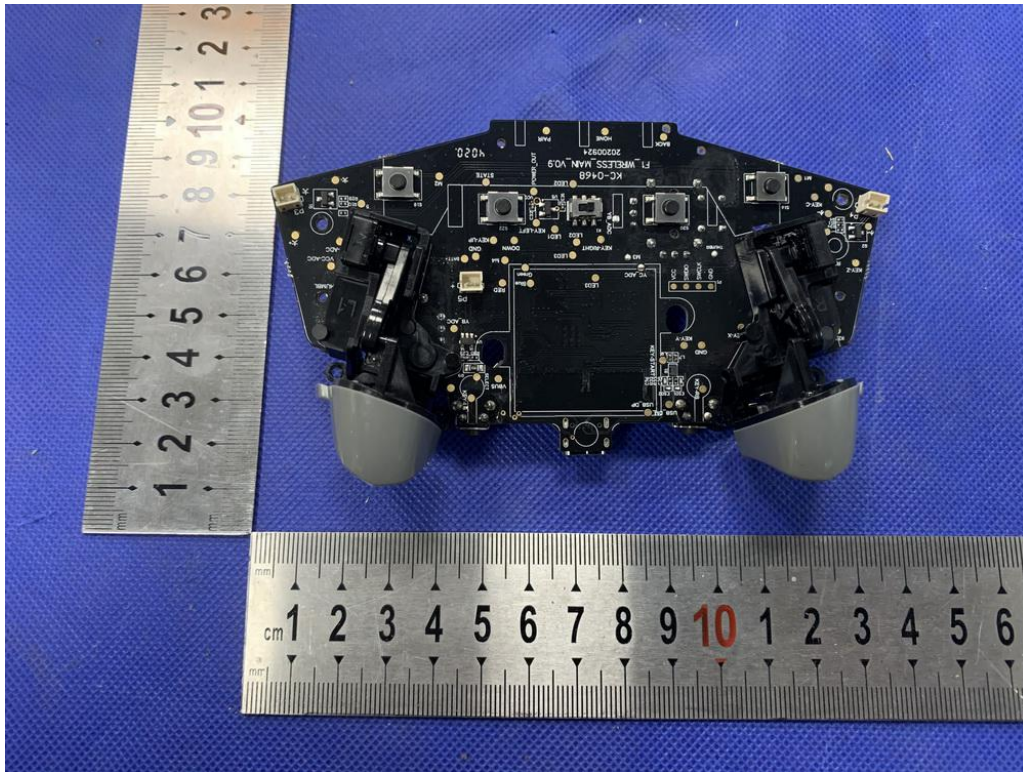


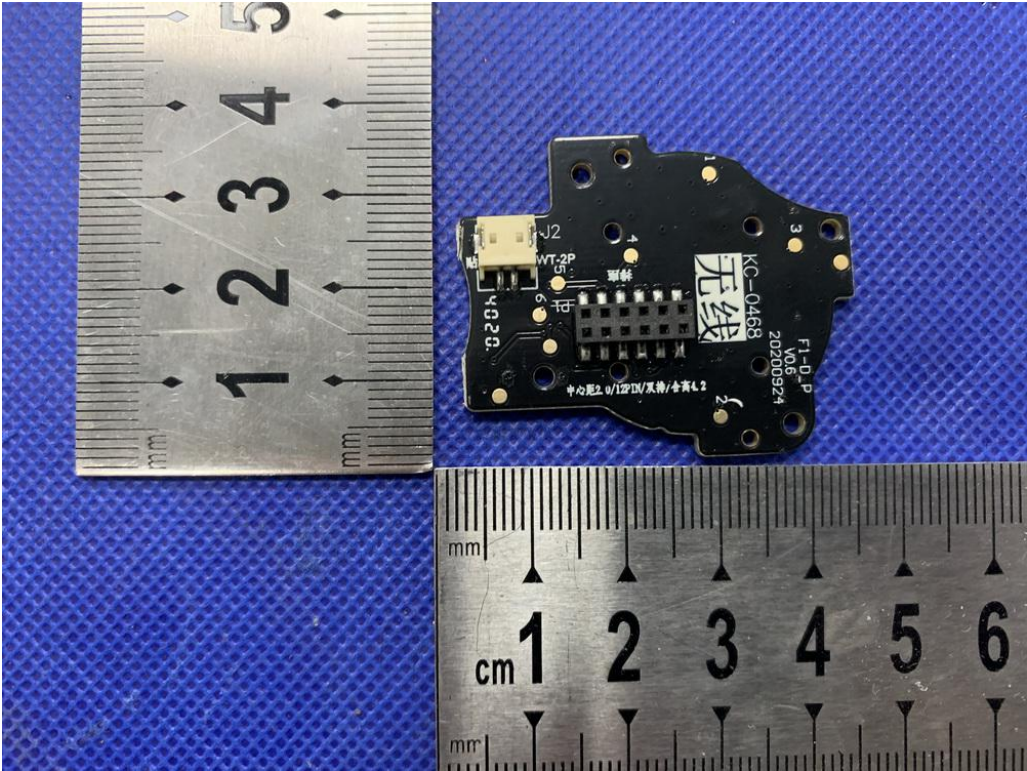






ANTENNA





-----The end of report-----