

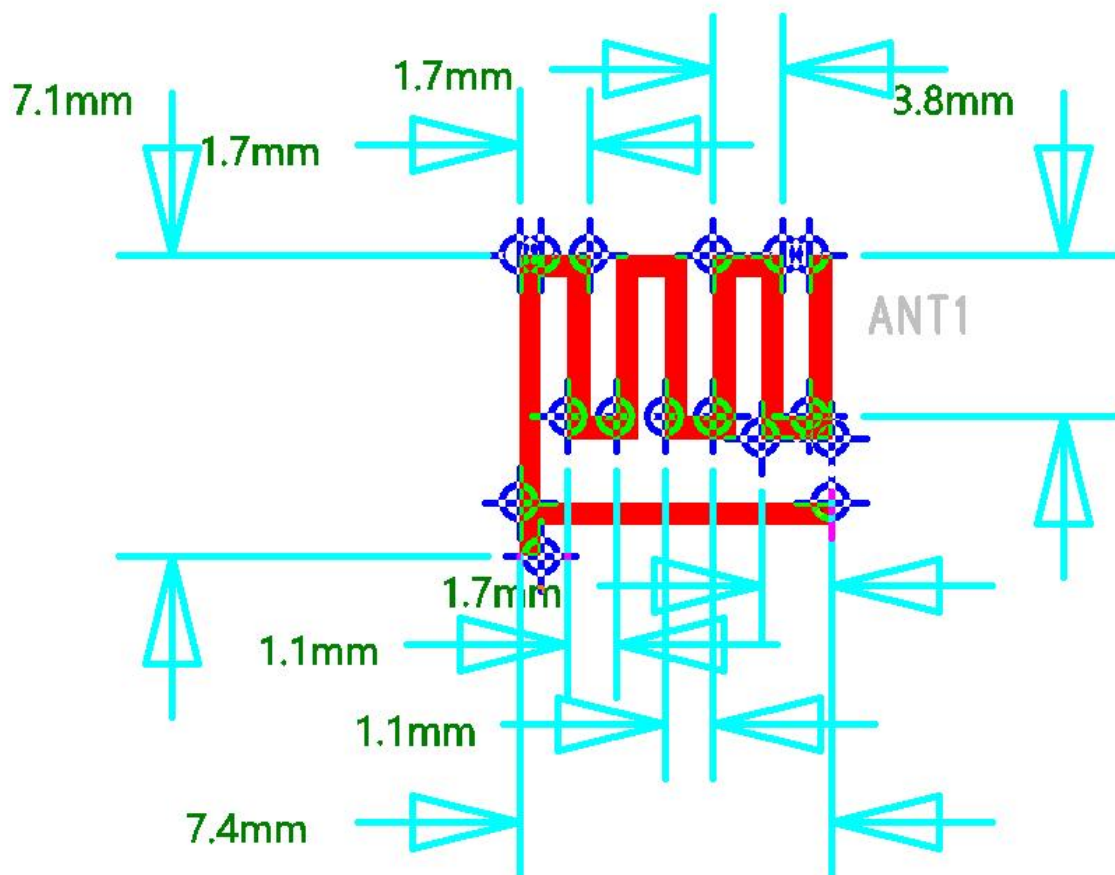
天线性能测试规格书

Applications

※Bluetooth Home RF

※ISM band 2.4GHz applications

1. Dimensions



2. Specifications

number	Item	Specifications
1	Working Central Frequency	2441 MHz
2	Band Width	(2402-2480)MHz
3	Gain	0dBi
4	VSWR	≤2.0
5	Antenna type	PCB antenna
6	Azimuth Beam width	Omni - directional
7	Impedance	50 欧姆
8	Modulation mode	GFSK

3. simulation parameter

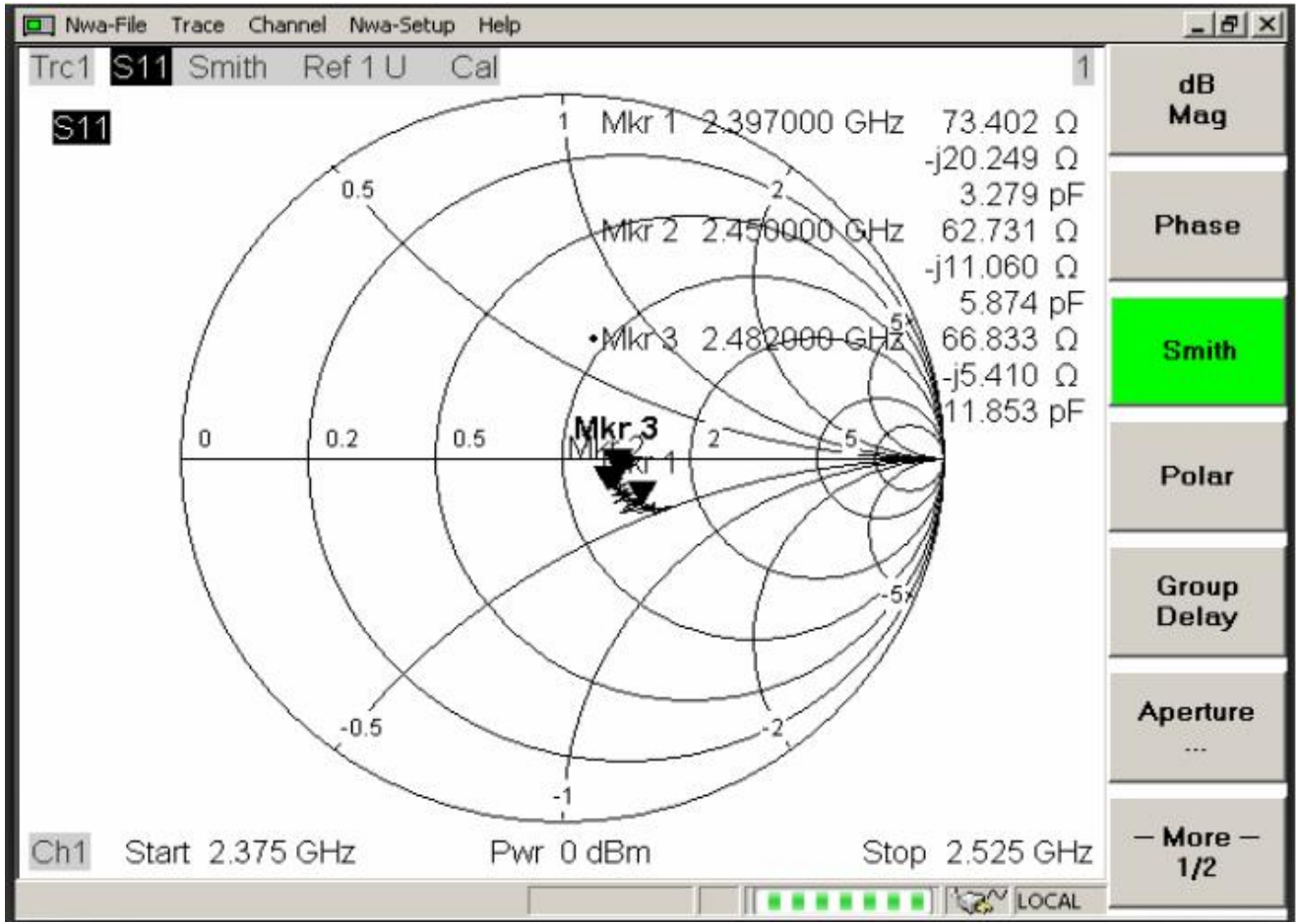
① VSWR

Mkr1: 2397MHz 1.47 Mkr2: 2450MHz 1.51 Mkr3: 2482 MHz 1.59



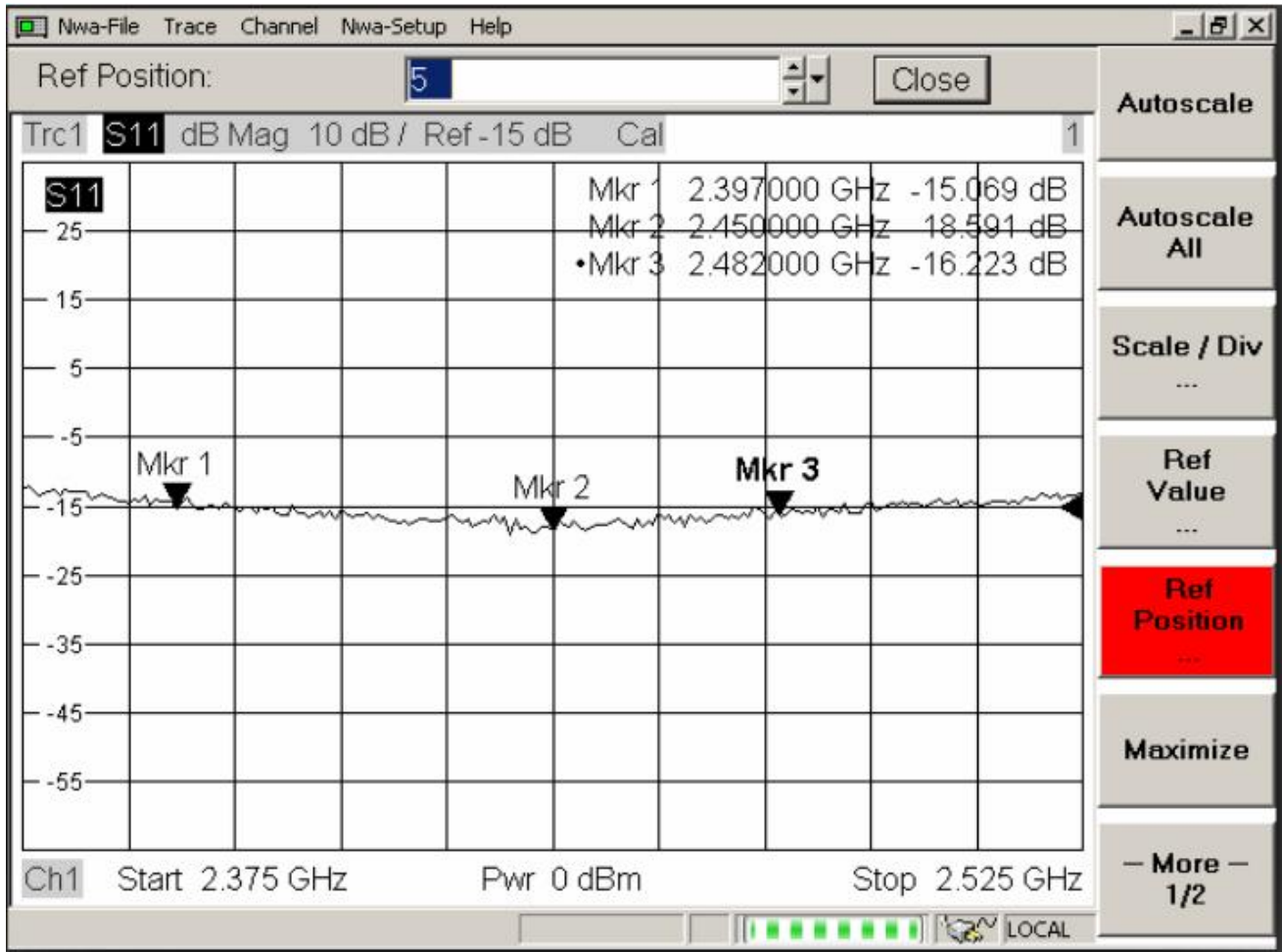
②Smith Char

Mkr1: 2397MHz 73.4 Mkr2: 2450MHz 62.7 Mkr3: 2482MHz 66.8



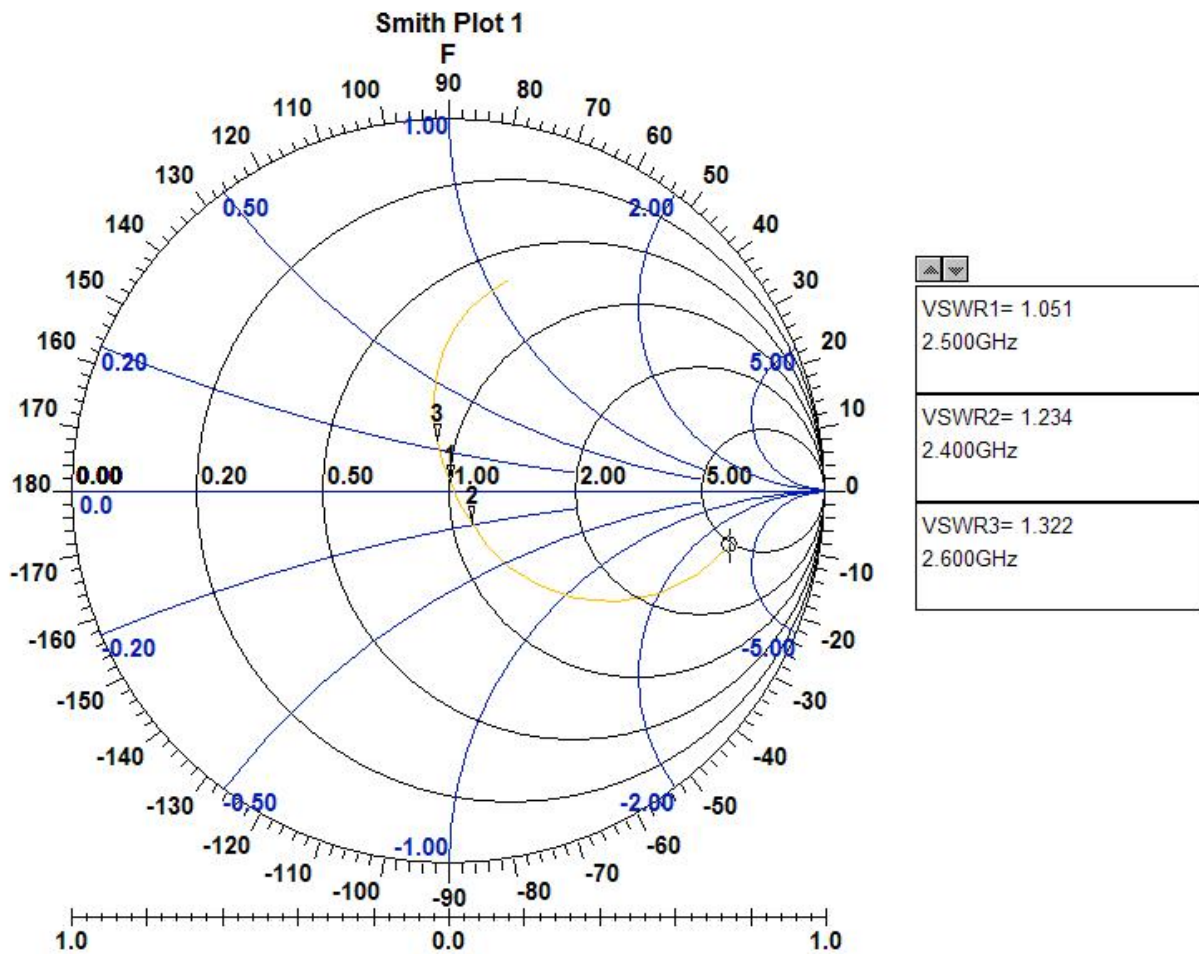
③Return Loss

Mkr1: 2397MHz -15 Mkr2: 2450MHz -18 Mkr3: 2482 MHz -16



④Smith Char

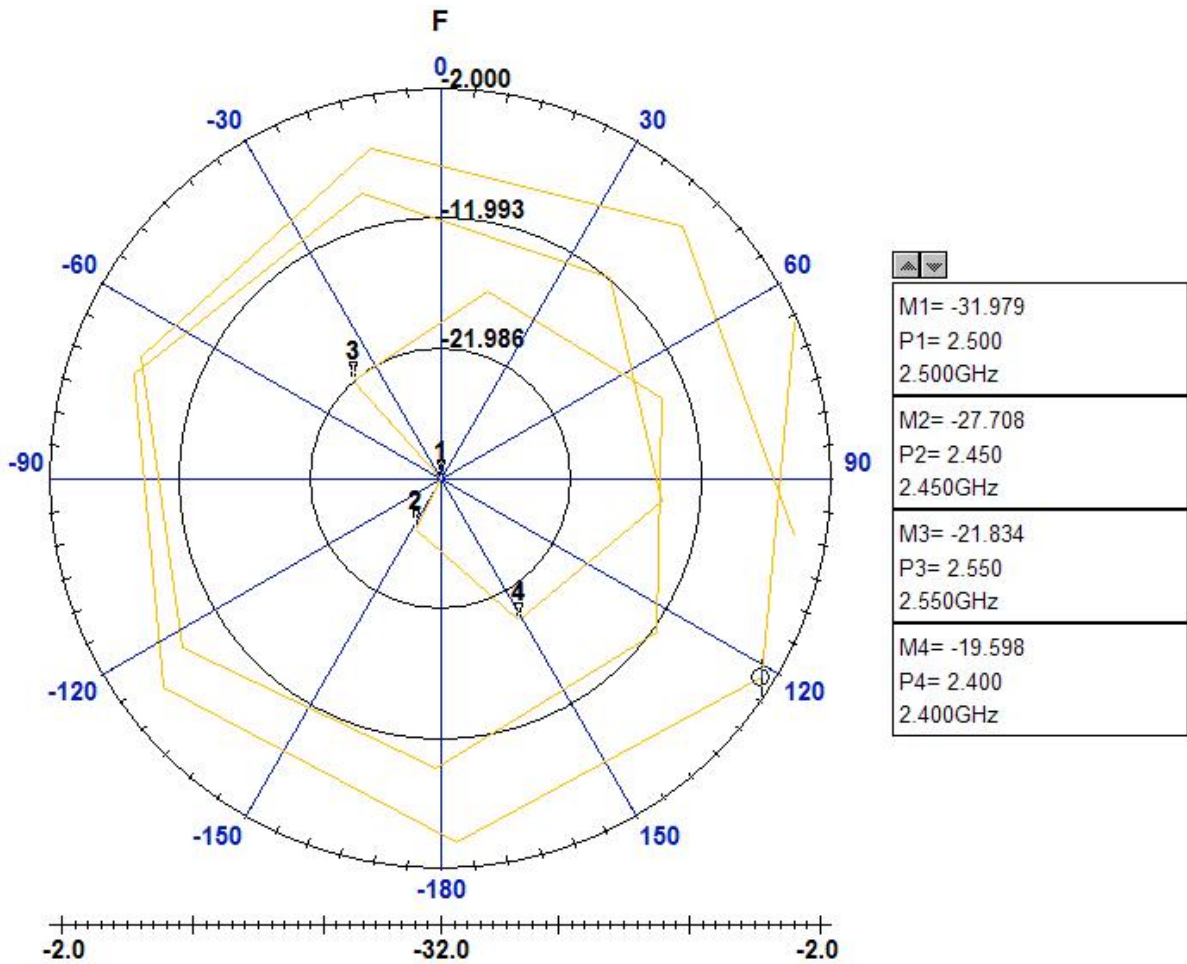
Mkr1: 2400MHz 1.234 Mkr2: 2500MHz 1.051 Mkr3: 2600MHz 1.322



⑤Return Loss

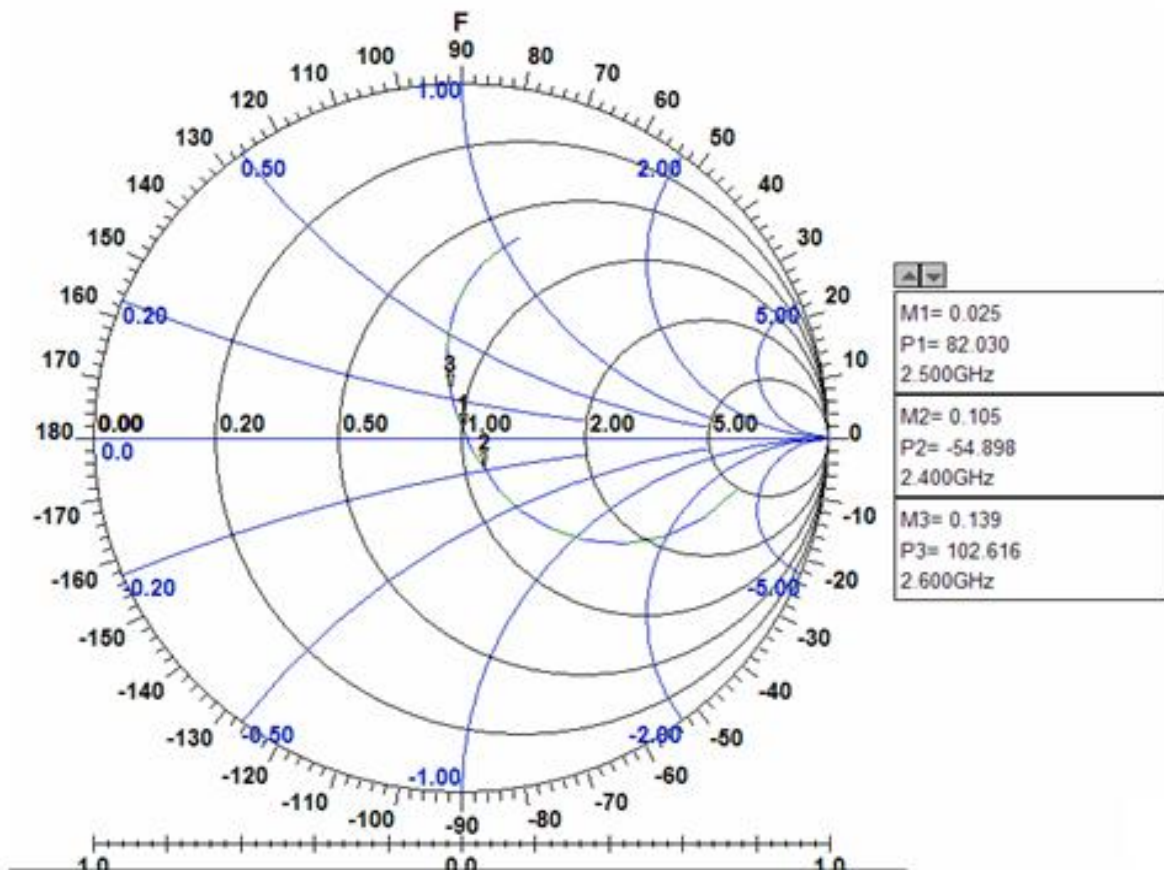
Mkr1: 2400MHz -19.59 Mkr2: 2450MHz -27.70 Mkr3: 2500MHz -31.97

Mkr4: 2550MHz -21.83



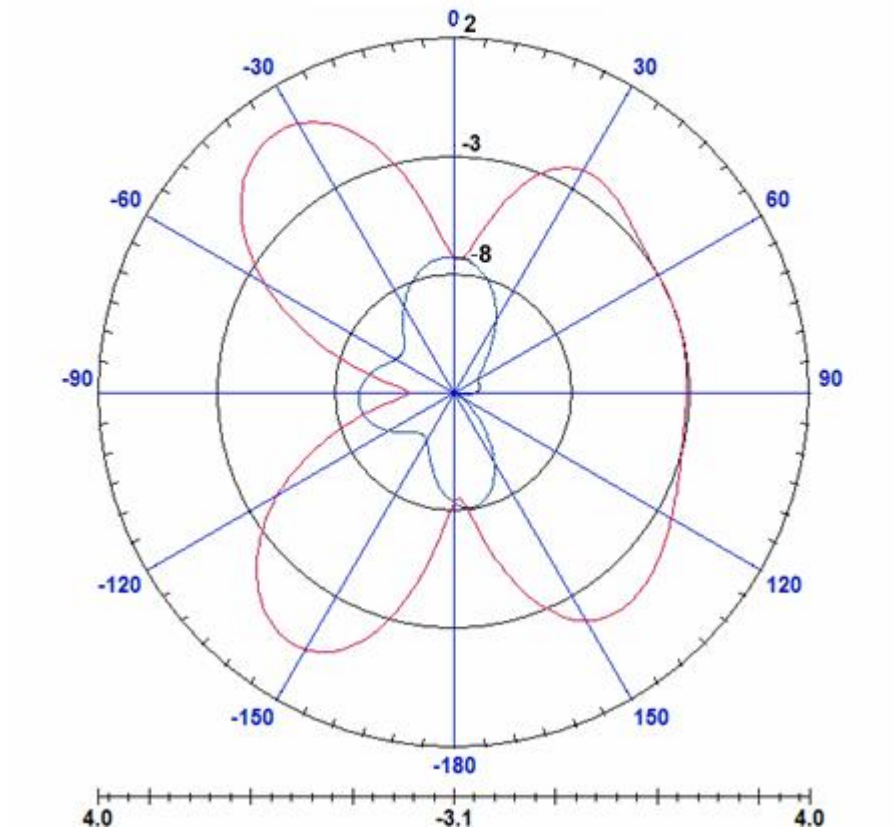
⑥Phase

Mkr1: 2400MHz -54.89 Mkr2: 2500MHz -82.03 Mkr3: 2600MHz -102.6

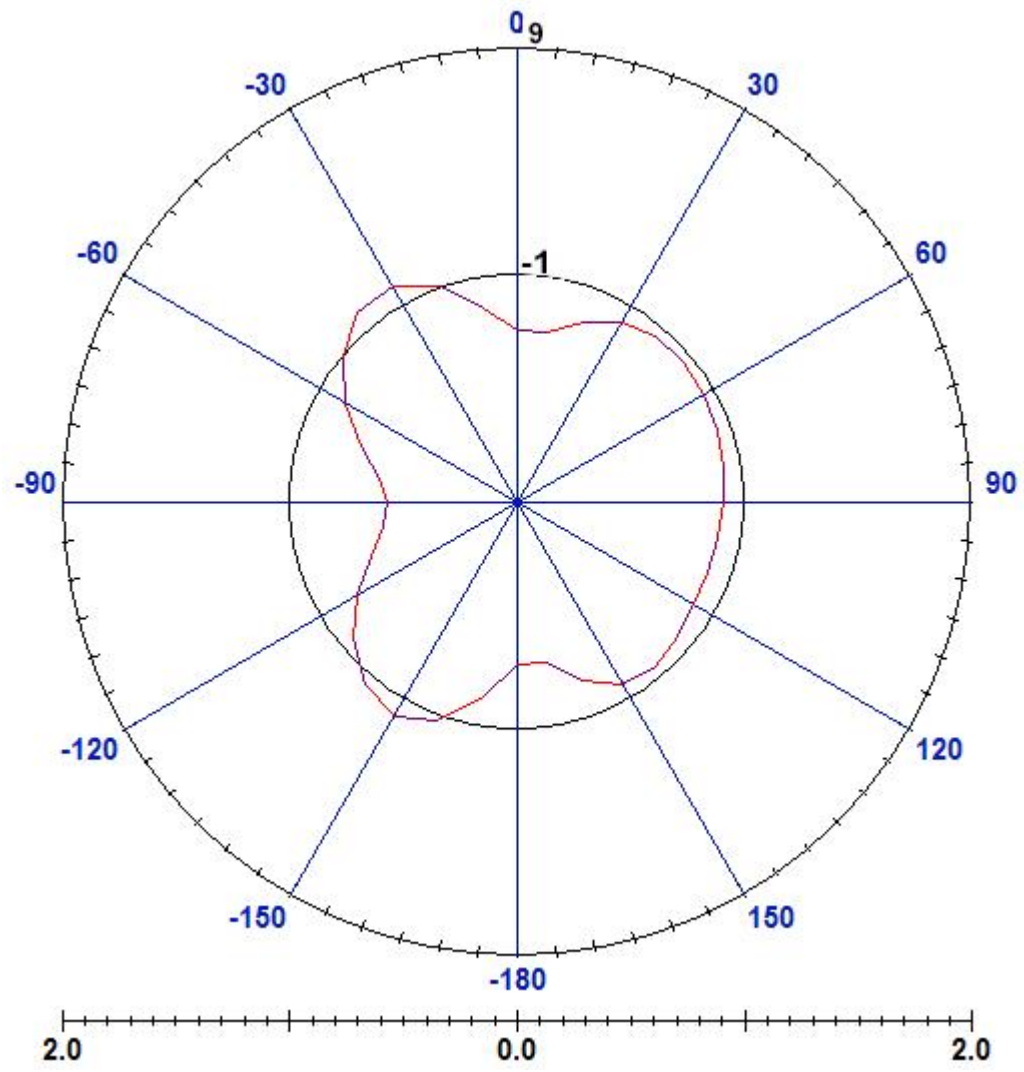


4. Radiation Patters

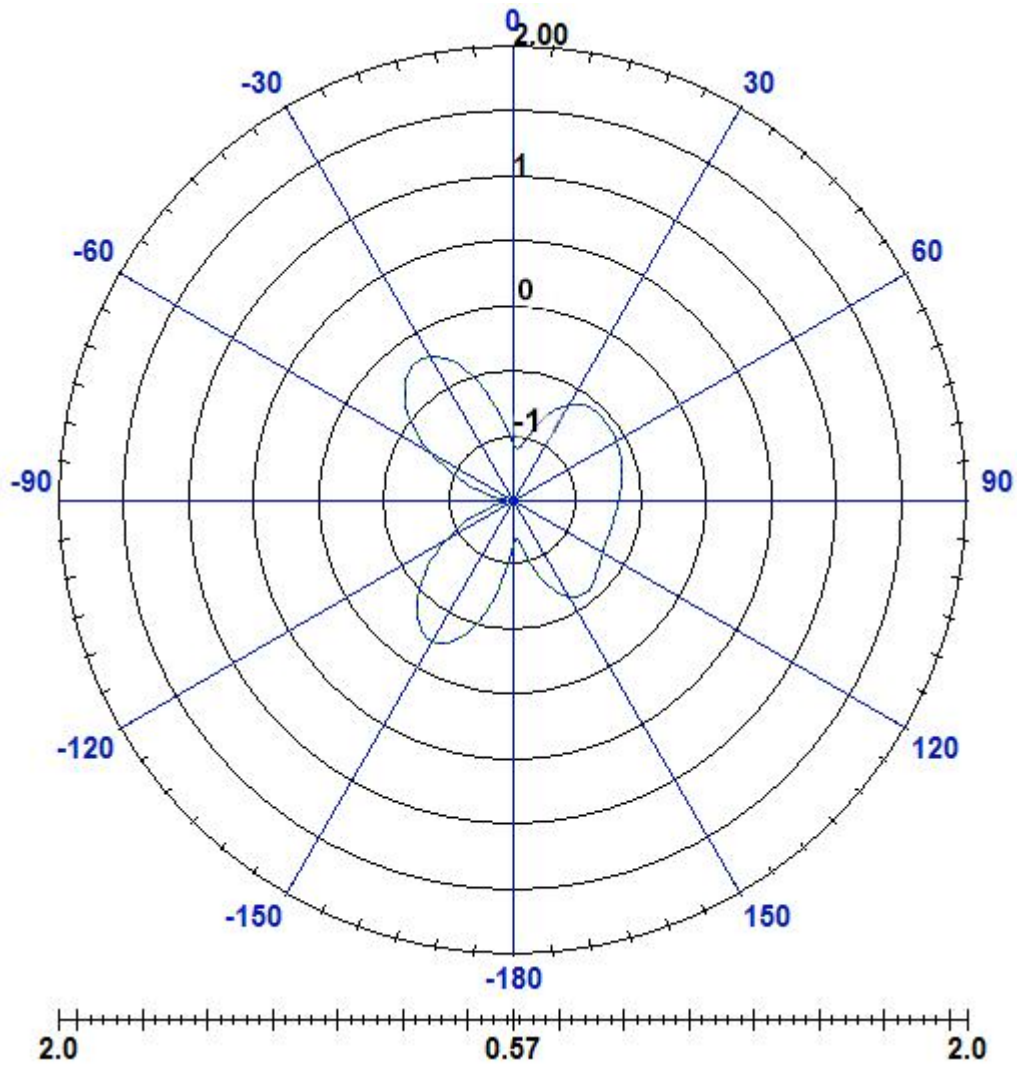
2450MHz XY-plane Max Gain 0dbi



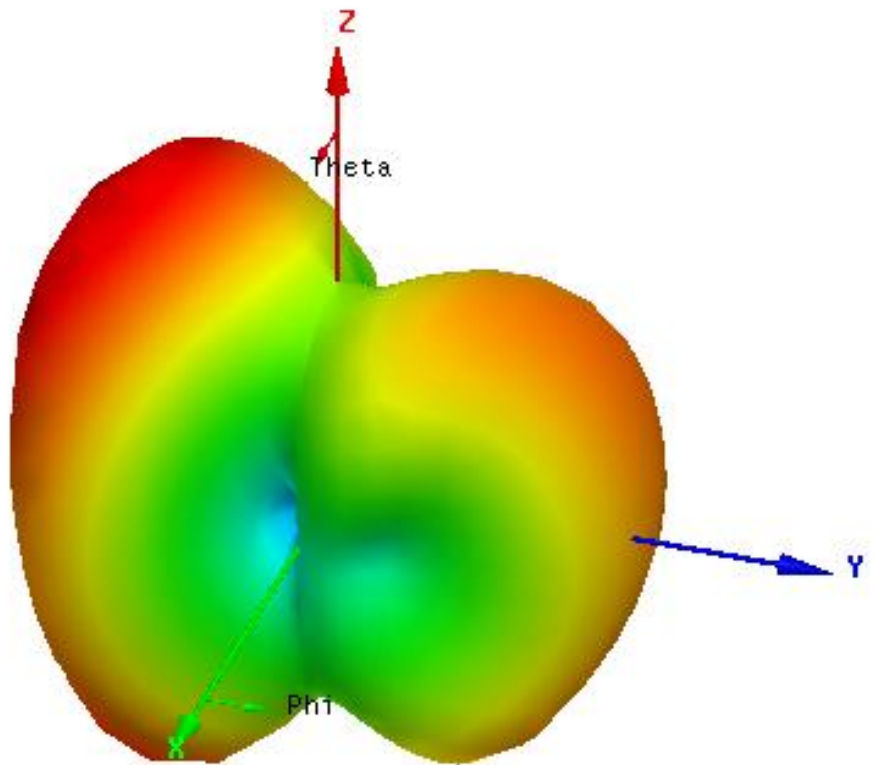
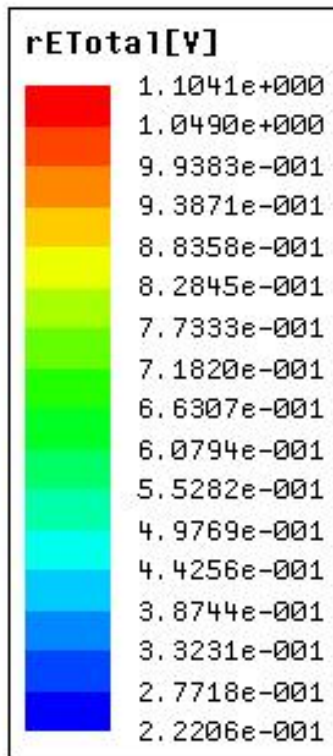
2450MHz XZ-plane Max Gain -0.13dbi



2450MHz YZ-plane Max Gain -0.39dbi



3D Radiation pattern



联络资料:

深圳市民展科技开发有限公司

深圳市南山区
高新区科技中二路
深圳软件园一期 3 号楼 202

电话: +86-755-26995855

传真: +86-755-26995865

网址:

<http://www.szmy-power.com>

<http://www.innosystemtech.com>