

# 飞智黑武士 4 Pro 游戏手柄

Flydigi Vader 4 Pro Gaming Controller

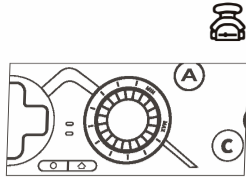
用户手册  
User Manual



扫码查看完整版用户手册  
扫描下方二维码查看用户手册  
Scan QR code to read the user manual  
QR 코드를 스캔하시면 사용설명서를 보실 수 있습니다

## 力调节摇杆使用说明

转动力调节旋钮, 无极调节摇杆阻尼  
顺时针增大阻尼: 微调更稳定  
逆时针减小阻尼: 灵活不累手



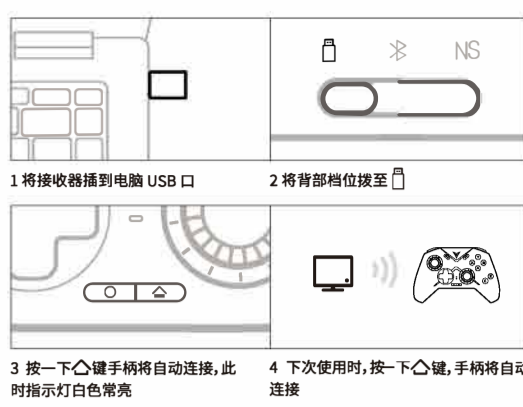
## 飞智空间站 开启更多自定义

通过电脑访问飞智官网 www.flydigi.com 下载「飞智空间站」, 可自定义按键、宏、体感、摇杆等功能。

飞智空间站	
<b>按键映射</b> 可将按键映射为手柄、键盘按键	<b>宏定义</b> 录制摇杆和按键数据, 简化繁琐操作
<b>体感映射</b> 将体感映射为摇杆/鼠标, 射击游戏更精准	<b>摇杆调节</b> 设置中心死区和灵敏度曲线

## 连接电脑

### 无线接收器连接



### 有线连接

将背部档位拨至 , 通过USB线连接电脑和手柄, 指示灯白色常亮表示连接成功  
蓝牙连接  
将背部模式档位拨至 , 按唤醒手柄, 在电脑蓝牙里连接 Xbox Wireless Controller, 连接成功后指示灯白色常亮

## 连接 Switch



### Switch 模式下按键和键值映射关系如下

A	B	X	Y	SELECT	START	Home Button	Screenshot	Switch
B	A	Y	X	-	+	主页	截图	Switch

## 连接安卓/iOS 设备



以上方式适用于原生支持手柄的游戏, 若要玩不支持手柄的游戏, 请下载飞智游戏厅, 在外设管理页面, 按引导切换手柄模式 (仅适用于安卓手机)

## 基本操作

开机: 按一下 Home 键  
关机: 切换背部档位 (或者无操作 15 分钟后, 手柄会自动关机)  
低电量: 第二个指示灯红色闪烁  
充电中: 第二个指示灯红色常亮  
充满电: 第二个指示灯绿色常亮

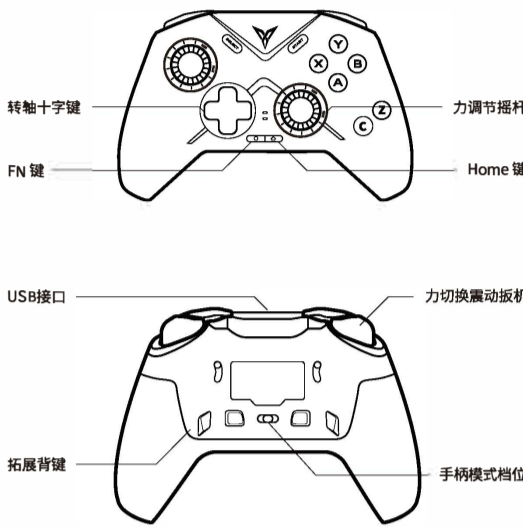
## 规格

模式	通用平台	指示灯	连接方式	系统要求
	PC	长按 O+X 切换到 Xinput 模式, 指示灯白色	USB 接收器/有线	Win 7 及以上
	PC/安卓/iOS	长按 O+A 切换到 Dinput 模式, 指示灯蓝色	蓝牙	Win 7 及以上 安卓 10 及以上 iOS 14 及以上
	Switch	蓝色	蓝牙/有线	Switch 平台

\*PC 上绝大多数游戏都支持 Xinput 模式, 但一些发布较早的游戏可能只支持 Dinput 模式

无线射频: 蓝牙 5.0  
使用距离: 小于 10 米  
电池信息: 可充电锂离子电芯, 电池容量 800mAh, 充电时间 2 小时, 充电电压 5V, 充电电流 800mA  
工作电流: 使用时电流小于 45mA, 待机时电流小于 10μA  
温度范围: -10°C ~ 50°C 下使用和存放

## 外观



## 常见问题

Q: 手柄无法连接?  
A: 请确保手柄背部档位正确, 同时按住 Home 键三秒, 指示灯闪烁, 手柄进入配对状态  
- 配对接收器: 将接收器拔下, 再重新插入 USB 口  
- 配对蓝牙: 在蓝牙设置页面取消已配对设备, 关闭蓝牙, 重新连接  
Q: 如何升级手柄固件?  
A: 在电脑上安装飞智空间站, 或者在手机上安装飞智游戏厅, 根据软件引导进行固件升级  
Q: 摇杆/扳机/体感出现异常?  
A: 在电脑上安装飞智空间站, 进入测试页面, 按引导校准手柄

## 产品中有毒物质的名称及含量

部件名称	有毒物质					
	铅 (Pb)	汞 (Hg)	镉 (Cd)	六价铬 (Cr(VI))	多溴联苯 (PBB)	多溴二苯醚 (PBDE)
印刷电路板组件	○	○	○	○	○	○
外壳	○	○	○	○	○	○
包装	○	○	○	○	○	○
线材	○	○	○	○	○	○
聚合物电池	○	○	○	○	○	○
硅胶	○	○	○	○	○	○
金属、胶带、微小元件	○	○	○	○	○	○

本表格依据 SJ/T 11364 的规定编制

○ 表示该有毒物质在该部件的所有材料中的含量均在 GB/T 26572-2011 规定的限量要求以下  
× 表示该有毒物质在该部件的某一均质材料中的含量超出 GB/T 26572-2011 规定的限量要求

# Flydigi Vader 4 Pro Gaming Controller

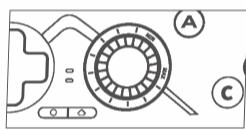
User Manual



Scan QR code to read the user manual

## Instructions for using the Force-adjustable joystick

Rotate the force adjustment knob to adjust the joystick damping continuously.  
Clockwise rotation increases the damping, provides more stability for precise control. Counterclockwise rotation decreases the damping, allows for more flexibility and reduces hand fatigue.



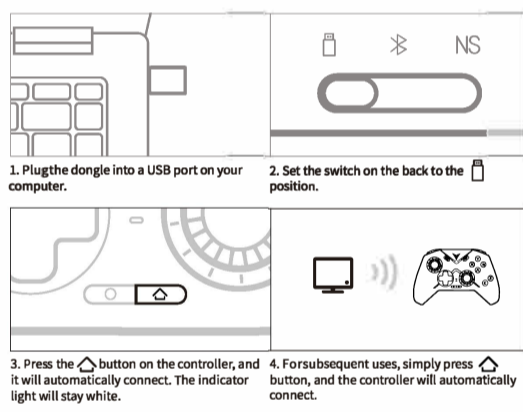
## Flydigi Space Station unlocks more customization options.

Access the Flydigi official website at www.flydigi.com and download the "Flydigi Space Station" software on your computer to customize key mappings, macros, motion sensing, and joystick functions.

Flydigi Space Station	
<b>Key Mapping</b> Map keys to gamepad, keyboard, and mouse buttons	<b>Macro Definition</b> Record joystick and button inputs to simplify complex operations
<b>Motion Sensing Mapping</b> Map motion sensing to joystick or mouse movements for more accurate shooting in games	<b>Joystick Adjustment</b> Customize the deadzone and sensitivity curves for optimal control

## Connecting to a computer:

### Wireless Dongle Connection:



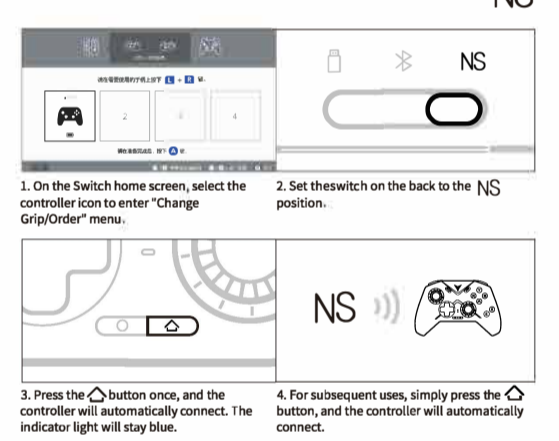
### Wired Connection:

Set the switch on the back to the position. Connect the controller to the computer using a USB cable. The indicator light will stay white, indicating a successful connection.

### Bluetooth Connection:

Set the switch on the back to the position. Press the Home button to wake up the controller. On your computer's Bluetooth settings, connect to the Xbox Wireless Controller. Once connected successfully, the indicator light will stay white.

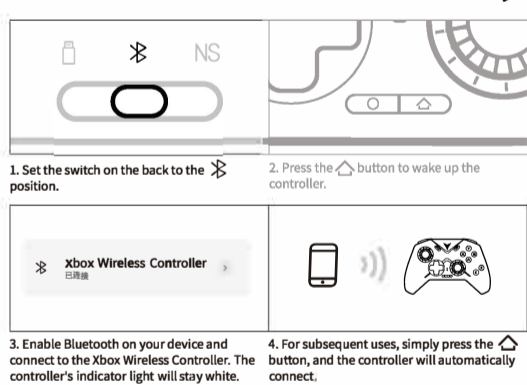
## Connecting to a Switch:



### Button and Key Mapping in Switch Mode:

A	B	X	Y	SELECT	START	Home Button	Screenshot	Switch
B	A	Y	X	-	+	Home Button	Screenshot	Switch

## Connecting to Android/iOS devices:



The above method is suitable for native game support with controllers. If you want to play games that do not support controllers, please download the Flydigi Game Center. In the peripheral management page, follow the instructions to switch to controller mode (only applicable to Android phones).

## Basic Operations:

Power On: Press the Home button.  
Power Off: Switch the back switch position (or the controller will automatically power off after 15 minutes of inactivity).  
Low Battery: The second indicator light flashes red.  
Charging: The second indicator light stays solid red.  
Fully Charged: The second indicator light stays solid green.

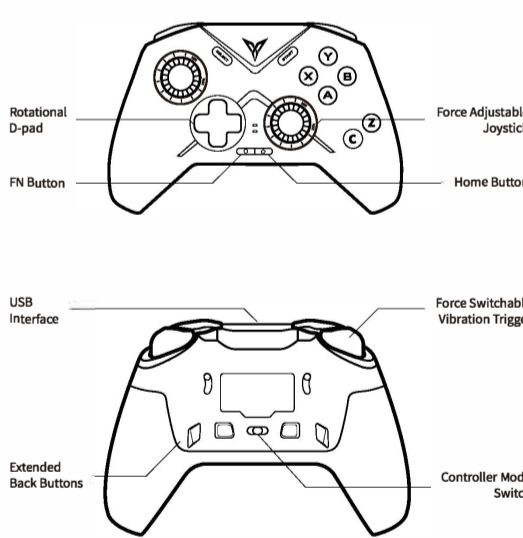
## Specifications:

Mode	Platform	Indicator Lights	Connection Methods	System Requirements
	PC	- Hold O+X to switch to Xinput mode, indicator light is white. - Hold O+A to switch to Dinput mode, indicator light is blue.	Dongle/ Wired	Windows 7 and above
	PC/Android/iOS	- Hold O+X to switch to Xinput mode, indicator light is white. - Hold O+A to switch to Dinput mode, indicator light is blue.	Bluetooth	Android 10 and above iOS 14 and above
	Switch	blue	Bluetooth/ Wired	Switch platform

Note: Most games on PC support Xinput mode, but some older games may only support Dinput mode.

Wireless RF: Bluetooth 5.0  
Operating Distance: Less than 10 meters  
Battery Information: Rechargeable lithium-ion battery with a capacity of 800mAh. Charging time is 2 hours. Charging voltage is 5V, and charging current is 800mA.  
Operating Current: Current is less than 45mA during use and less than 10μA in standby mode.  
Temperature Range: -10°C to 50°C for use and storage.

## Appearance



## Q & A

Q: The controller cannot connect.  
A: Please make sure the rear gear switch is correct and hold the [Home] button for three seconds until the indicator light flashes quickly to enter pairing mode.  
- For dongle pairing: Unplug and reinser the dongle into the USB port.  
- For BT pairing: Unpair the device in the BT settings, turn off and on BT, then reconnect.

Q: How to update the controller firmware?  
A: Install Flydigi Space Station on your computer or Flydigi Game Center on your phone and follow the software instructions to update the firmware.

Q: Joystick/trigger/motion sensing is malfunctioning.  
A: Install Flydigi Space Station on your computer, enter the testing page, and calibrate the controller as guided.

## The name and content of harmful substances in the product

Part Name	Toxic or Hazardous Substances and Elements					
	Pb	Hg	Cd	Cr	PBB	PBDE
PCB board	○	○	○	○	○	○
Shell	○	○	○	○	○	○
Packaging	○	○	○	○	○	○
Wire	○	○	○	○	○	○
Polymer battery	○	○	○	○	○	○
Silicone	○	○	○	○	○	○
Small structural parts such as metal and tape	○	○	○	○	○	○

This form has been prepared in accordance with the provisions of SJ/T 11364

○ Indicates that the content of the hazardous substance in all homogeneous materials of this part is within the limit specified in GB/T 26572-2011. Require the following

× Indicates that the content of the hazardous substance in at least one homogeneous material of the component exceeds the provisions of GB/T 26572-2011. The limited requirements

## **FCC Statement**

This device complies with Part 15 of the FCC Rules. Operation is subject to the following two conditions:

(1) This device may not cause harmful interference.

(2) This device must accept any interference received, including interference that may cause undesired operation.

2. Changes or modifications not expressly approved by the party responsible for compliance could void the user's authority to operate the equipment.

Note: This equipment has been tested and found to comply with the limits for a class B digital device, pursuant to Part 15 of the FCC Rules. These limits are designed to provide reasonable protection against harmful interference in a residential installation.

This equipment generates uses and can radiate radio frequency energy and, if not installed and used in accordance with the instructions, may cause harmful interference to radio communications. However, there is no guarantee that interference will not occur in a particular installation. If this equipment does cause harmful interference to radio or television reception, which can be determined by turning the equipment off and on, the user is encouraged to try to correct the interference by one or more of the following measures:

- Reorient or relocate the receiving antenna.
- Increase the separation between the equipment and receiver.
- Connect the equipment into an outlet on a circuit different from that to which the receiver is connected.
- Consult the dealer or an experienced radio/TV technician for help.

The device has been evaluated to meet general RF exposure requirement.

The device can be used in portable exposure condition without restriction.