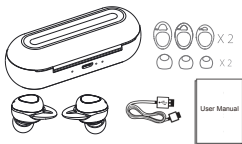
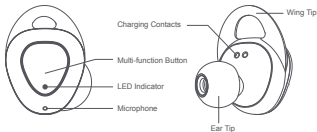


T11 True Wireless Earphones
User Manual

Packing list



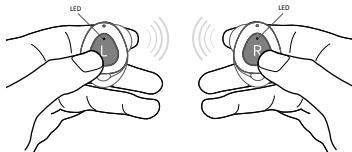
Product Overview



Product Specification

Model name	T11
Bluetooth version	V4.2
Bluetooth name	T11 L(L ear-bud) T11 (R ear-bud, both ear-buds)
Stand-by time	Approx. 60 hrs
Talking time	Approx. 3.5hrs
Battery capacity	2*50 mAh
Battery dock capacity	500 mAh
Battery temperature	0°C - 45°C (32 °F - 113°F)

Power ON/OFF

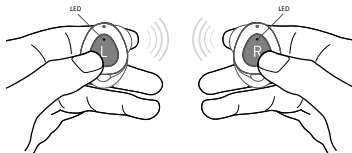


Power on/off: take out the earbud from charge box
Power off: put the earbud into charge box
Note: the charge box must be with power
* the white/red LED stay 1~2s

Pairing

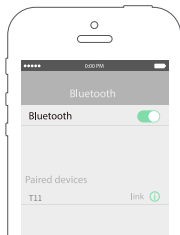
Stereo Mode:

1. Take both ear-buds from charge box;



- * The charge box must be with power
- *The L&R will automatically connect , the R LED flashes red & white alternately

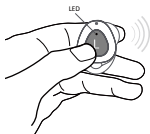
2. Find “T11” to connect with your phone.



Mono Mode:

Example: turn the L ear-bud to mono mode

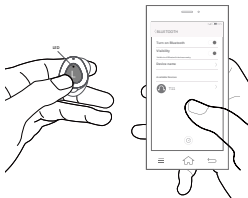
1. Take the L ear-bud from charge box



*The red & white LED flashing

* The charge box must be with power

2. Find “T11” to connect with your phone



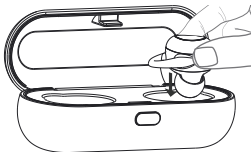
* The ear-buds will automatically connect to the phone after the first pairing

Talking Mode:

When make a phone call, for safe reasons only R ear-bud will be enabled to work.

Charging

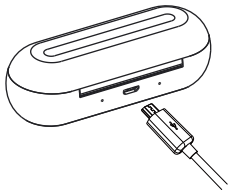
1.Charging the ear-buds



*Charging: red LED on

*Fully charged: LED stay white /turned off after 1min

2. Charging the dock



*Charging: red LED on

*Fully charged: white LED on

Trouble Shooting

Follow steps below can resolve any pairing or reconnecting issues:

1. Make sure battery dock has enough power;
2. Put the ear-buds into the dock and recharge for a while;
3. Take out both earbuds from charge box, long press both earbuds around 3-5s until both power off. Long press L & R again around 15s, waiting until only R LED red & white flashing alternately, then reconnect phone. This method only applies for R & L not able to automatically pair.
only applies for R & L not able to automatically pair.

Care and Maintenance

1. Charge the ear-buds at least once every 6 months.
2. Do not store the ear-buds in extreme temperatures (under 0°C or over 45°C).
3. Do not use chemicals or detergents to clean the ear-buds.
4. Do not drop or knock your ear-buds on hard surfaces.
5. Do not scrape the surface with sharp objects.
6. Do not try to take the product apart.

FCC Statement

This equipment has been tested and found to comply with the limits for a Class B digital device, pursuant to part 15 of the FCC rules. These limits are designed to provide reasonable protection against harmful interference in a residential installation. This equipment generates, uses and can radiate radio frequency energy and, if not installed and used in accordance with the instructions, may cause harmful interference to radio communications. However, there is no guarantee that interference will not occur in a particular installation. If this equipment does cause harmful interference to radio or television reception, which can be determined by turning the equipment off and on, the user is encouraged to try to correct the interference by one or more of the following measures:

- Reorient or relocate the receiving antenna.
- Increase the separation between the equipment and receiver.
- Connect the equipment into an outlet on a circuit different from that to which the receiver is connected.
- Consult the dealer or an experienced radio/TV technician for help.

To assure continued compliance, any changes or modifications not expressly approved by the party.

Responsible for compliance could void the user's authority to operate this equipment. (Example- use only shielded interface cables when connecting to computer or peripheral devices).

This equipment complies with Part 15 of the FCC Rules. Operation is subject to the following two conditions:

- (1) This device may not cause harmful interference, and
- (2) This device must accept any interference received, including interference that may cause undesired operation.

RF warning statement:

The device has been evaluated to meet general RF exposure requirement. The device can be used in portable exposure condition without restriction.