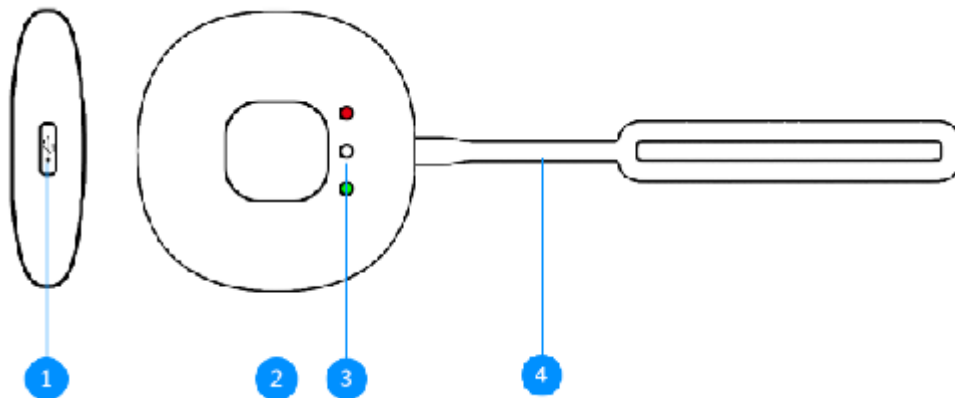


# Personal Alarm Product Brochure B68L17D1

## Product Description

The **PPsafety** Smart Self-defense Alarm is a simple kind of multi-function crime prevention alarm. With bluetooth chips built in, **PPsafety** Smart Self-defense Alarm can connect to mobile phones, and have intelligent functions such as sexual assault prevention, safety protection, bidirectional retrieve and so on. It can ensure users' safety at anytime and anywhere.

## Components



**Charge Spot:** Attach power cord to it to charge the alarm.

**Alarm Button:** The alarm can be controlled by different button-pressing operations.

**Status Lights:** The white light indicates the power. The red and green lights indicate the status of the alarm.

**Plug Pin with a Pull Ring:** Pulling the pin out, the alarm will make an alarm sound. Plugging it back, the sound will stop.

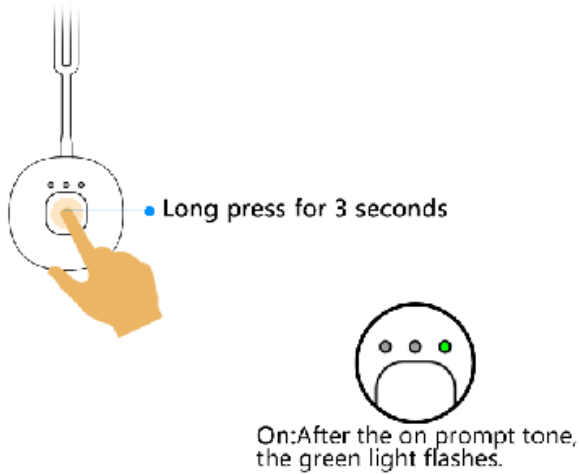
## Operation Instructions

Used independently, **PPsafety** Smart Self-defense Alarms can make high decibel and continuous alarm sound. Using **PPsafety** Smart Self-defense Alarms cooperatively with the

App, you can enjoy the complete functions of the alarm such as timing protection, rapid alerting, anti-lost and getting back, and so on. In order to improve the safety index, you are recommended to use your alarm cooperatively with the App.

➤ On

On: long press on the button until the green light flashes. After hearing a tone, you open the device successfully.



➤ Use Independently

High decibel alarm—when you are in emergency circumstances, you can pull the pin out. The alarm will make a high frequency alarm sound. Plug the pin back, the sound will stop. Under this condition, **PPsafety** Smart Self-defense Alarms just make the alarm sound. The help-seeking messages won't be sent to the customer services or the police.

Portable accessories—You can hook **PPsafety** Smart Self-defense Alarms in backpacks or keys as the decoration.

➤ Use Cooperatively with the App

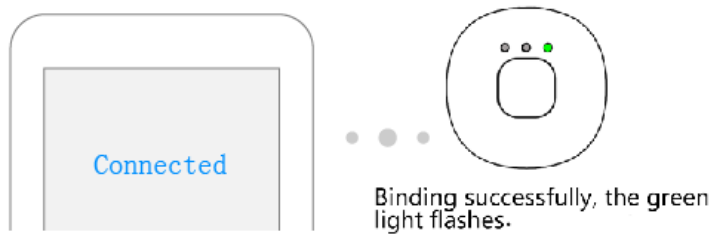
Please scan the QR code to download the App first.



1. Bind **PPsafety** Smart Self-defense Alarms with the App

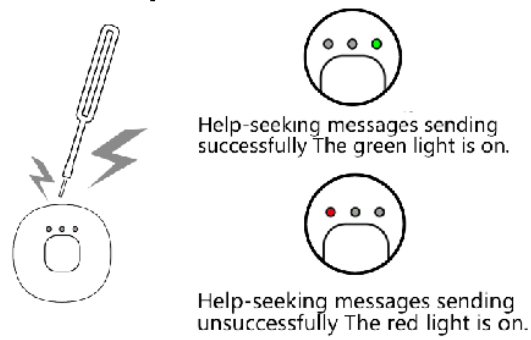
After startup of the device, start the App. Operate according to the instructions. After the green light flashes and the App shows a message of connecting successfully, you

have bound your alarm and the App together.



## 2. Rapid Alerting

Pull the pin out to give an alarm: when you are in emergency circumstances, you can pull the pin out. The alarm will make a high frequency alarm sound. At the same time, the alarm will send a help-seeking message to the police. If the green light is on, it means you have called the police successfully. If the red light flashes, it means the bind between the alarm and the App is broken. Plug the pin back, the sound will stop.



Press the button to give an alarm: when you are in emergency circumstances, you can press the button for two times. If the green light is on, it means you have called the police successfully. If the red light flashes, it means you haven't called the successfully.



## 3. Alarms Retrieving

Start the App. Click the button of "Alarms Retrieving". When the alarm is detected, the

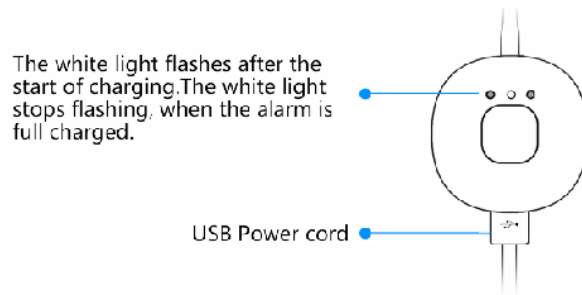
green light flashes, and the alarm will make a special tone.



#### 4. Charging

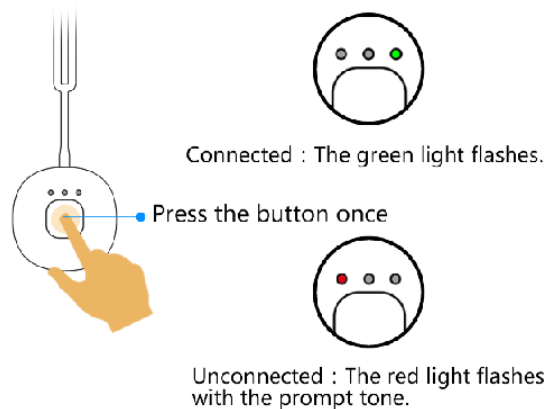
When the power is low, the alarm will make a special tone.

The white light flashes after the start of charging. When the alarm is full charged, the white light stops flashing. When the power is cut off, the white light turns off.



#### 5. Connection Status

Press the button, the alarm will detect the connection status of it and the App. If the connection is working correctly, the green light flashes; if not, the red light flashes.



If the connection breaks suddenly, the red light flashes.

Custom Function: When the alarm and the App are connected, you can choose to open the "Cellphone Retrieving" and "Timing Protection" functions or not. (These two functions are closed in factory defaults.)

Cellphone Retrieving: Press the button on the alarm to find the cellphone. When the cellphone is detected, it will make a sound or vibrate to indicate its position.

Timing Protection: Press the button on the alarm to open the timing protection function which can allow the user to unlock the protection more quickly.

## Safety Precautions

Children under the age of 12 are not recommended to use this alarm.

Children at the age between 12 and 16 need the guidance of parents to use this alarm.

The product makes high decibel alarm sound. Please keep it away from your ears and head to protect your audition.

Keep it away from fire.

Do not disassemble the product by yourself.

## Specifications

Color: grass green, fruit pink, slate grey

Battery: polymer lithium battery (140mAh)

Battery Voltage: 3.7V

Charging Duration: 30min

Size: Alarm: 46.0mm\*46.0mm\*14.8mm ; Pull Ring: 91.0mm\*11.3mm

Material: ABS+PC

Applicable devices: The version of Android operating system of the phone must be 6.0 or higher, and the phone must support for Bluetooth 4.0; the version of iOS operating system of the iPhone 4s/5/5c/5s/6/6plus/7/7plus must be 7.0 or higher.

An Alarm ( with a plug pin and a pull ring) , A Power Cord, A Product Brochure

## Disclaimer

Users are free to choose to use our products or not. If you use our products, you are regarded as accepting the functions and using effects of them. Our company is not liable for the loss or damage of you and others caused by using our products for any reason and in any form.

Our products only provide the help-seeking channels. The malware and false alarm behaviors of the users must be borne by themselves, not by our company.

The protection functions and help-seeking channels provided by our products are aimed at improving the efficiency of rescue and no promises about eliminating dangers and rescuing successfully is made.

## Three Guarantees

The after-sales service commitment of **PPsafety** Smart Self-defense Alarm: we carry out the after-sales services strictly according to the act of consumers' rights and interests of the

People's Republic of China and the product quality law of the People's Republic of China.  
The services are as follows:

The warranty period is one year. Within its validity, you can enjoy the rights of changing and returning the product with invoice provided.

The following situation does not belong to the warranty scope.

- 1、 Unauthorized repair, remove, collision and liquid inlet, non-mating equipment accessories use, labeling tear and machine serial number alter
- 2、 Beyond the period of validity
- 3、 Damages caused by force majeure

## Product Packaging Content

Before operating this unit, please read these instructions completely and save them for future use.

Query PPsafety's relevant authorized service information, please call: 010-89178958.

## Product Manufacturing Information

Model: B68L17D1

Executive standard: Q/YWZ 001-2017

Manufacturer: **Youwozai** (Beijing) Network Technology Co. ,LTD

### **FCC Statement**

Changes or modifications not expressly approved by the party responsible for compliance could void the user's authority to operate the equipment.

This equipment has been tested and found to comply with the limits for a Class B digital device, pursuant to Part 15 of the FCC Rules. These limits are designed to provide reasonable protection against harmful interference in a residential installation. This equipment generates uses and can radiate radio frequency energy and, if not installed and used in accordance with the

instructions, may cause harmful interference to radio communications. However, there is no guarantee that interference will not occur in a particular installation. If this equipment does cause harmful interference to radio or television reception, which can be determined by turning the equipment off and on, the user is encouraged to try to correct the interference by one or more of the following measures:

- Reorient or relocate the receiving antenna.
- Increase the separation between the equipment and receiver.
- Connect the equipment into an outlet on a circuit different from that to which the receiver is connected.
- Consult the dealer or an experienced radio/TV technician for help

This device complies with part 15 of the FCC rules. Operation is subject to the following two conditions (1) this device may not cause harmful interference, and (2) this

device must accept any interference received, including interference that may cause undesired operation.

**Youwozai** (Beijing) Network Technology Co.,LTD reserves the right to interpret the trademark of the product