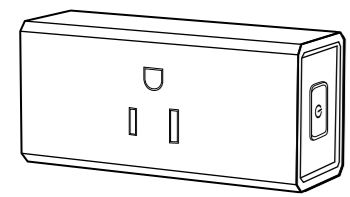




Smart X7



WiFi Smart Converter User Manual

Product Schematic



I. Function Key and Indicator Description

- Short press the power button, red indicator lights up means power on, red indicator lights off means power off.
- Long press the power button for about 5 seconds, blue indicator flashes means the product begin enter into the distribution network mode.
- Blue indicator flashes slowly means the network connection is abnormal, please check the router or network configuration.

(1)

II. Technical Parameters

Wireless type	Wi-Fi 2.4GHz
Input voltage	AC 100-250V
Max load	1760W 16A
Operating temperature	0 °C ~ +40 °C
Support system	Android / IOS
FCC ID	2A004C2001

III. Turn On Intelligence

Use your phone to scan the QR code or search "Tenswall Smart" in application market to download and install the App.

IOS system user download the "Tenswall Smart" app on the App Store.

Android system user download the "Tenswall Smart" app on the Google Play.

(2)

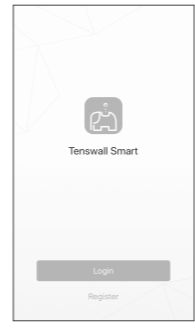


IOS Tenswall Smart Android

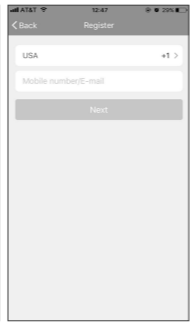
Step 1: Registration and login "Tenswall Smart" APP. If you don't have the account of "Tenswall Smart" APP, register an account or sign in with cellphone number + verification code. Next page describes the Registration process.

- Click "Register" (pic 1).
- The system automatically determines your country / area. You can also select your country code by yourself. Enter the cellphone number/E-mail and tap "Next" (pic 2)
- If you enter the mobile cellphone number, enter the verification code in the message (pic 3), and enter the password, tap "Confirm" to finish your registration.
- If you enter the E-mail, enter the password (pic 4), tap "Confirm" to finish your registration.

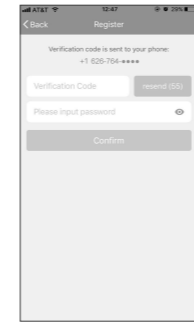
(3)



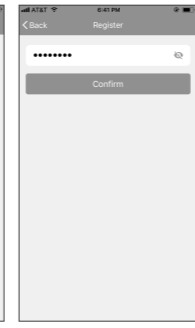
①



②

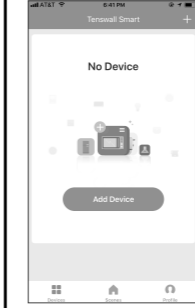


③

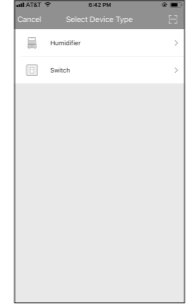


④

Make sure your phone is connected to WiFi in your home. Click "+" in the upper right corner of the homepage and select "Electrical outlet" from the device type.

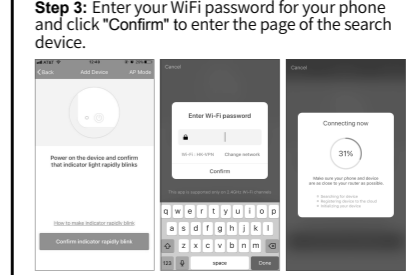


(6)



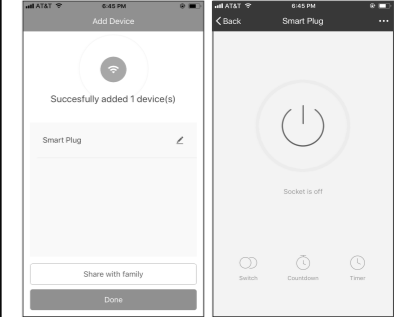
Step 2: Connect with the power supply, long press the power button more than 5 seconds until the blue indicator enters into the fast flash mode. Select confirm indicator rapidly blinks.

Step 3: Enter your WiFi password for your phone and click "Confirm" to enter the page of the search device.



(7)

Step 4: Enter the device page, then complete the configuration.

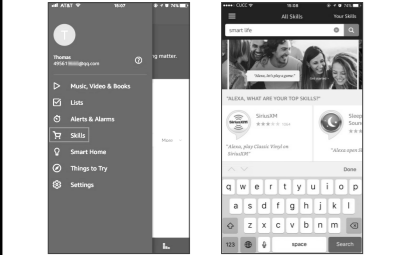


(8)

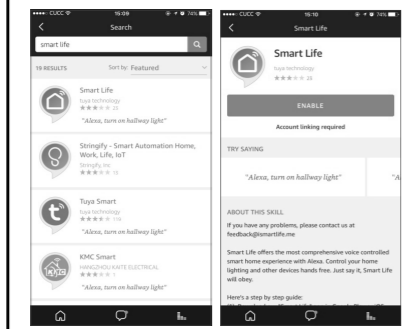
IV. How to use Amazon Echo to control your Smart devices?

Step 1: Open the "Amazon Alexa" APP then find the "Skills" button on the menu. Press it.

Step 2: Search the "Smart Life" and choose the first one, then Enable it.

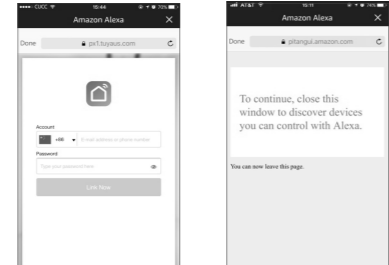


(9)



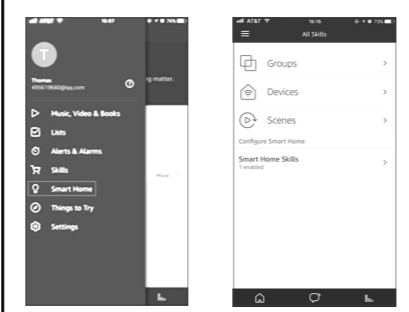
(10)

Step 3: Select your country code and Enter your "Smart Life" APP Account and Password, then press the "Link Now" button. When the Account success to login press the "Done" button.

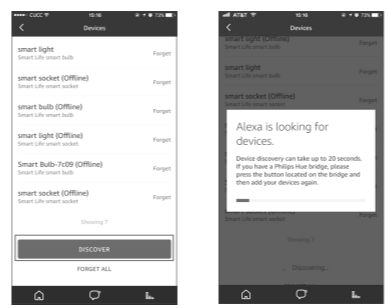


(11)

Step 4: Back to the menu, and press the "Smart home" button, then choose the "Devices", then press the "Discover" button.



(12)



Step 5: Now you can use your Alexa to control your Smart devices, enjoy yourself.

(13)

V. FCC Statement

This equipment has been tested and found to comply with the limits for a Class B digital device, pursuant to part 15 of the FCC Rules. These limits are designed to provide reasonable protection against harmful interference in a residential installation.

This equipment generates, uses and can radiate radio frequency energy and, if not installed and used in accordance with the instructions, may cause harmful interference to radio communications. However, there is no guarantee that interference will not occur in a particular installation. If this equipment does cause harmful interference to radio or television reception, which can be determined by turning the equipment off and on, the user is encouraged to try to correct the interference by one or more of the following measures:

- Reorient or relocate the receiving antenna.
- Increase the separation between the equipment and receiver.
- Connect the equipment into an outlet on a circuit different from that to which the receiver is connected.

(14)

• Consult the dealer or an experienced radio/TV technician for help.

To maintain compliance with FCC's RF Exposure guidelines, this equipment should be installed and operated with minimum distance between 20cm the radiator your body. Use only the supplied antenna.

Caution: Any changes or modifications to this device not explicitly approved by manufacturer could void your authority to operate this equipment.

This device complies with part 15 of the FCC Rules. Operation is subject to the following two conditions:

- This device may not cause harmful interference, and
 - this device must accept any interference received, including interference that may cause undesired operation.
- RF Exposure Information:
The device has been evaluated to meet general RF exposure requirement. The device can be used in portable exposure condition without restriction.

(15)

Any question, please feel free to contact us.



HTTP://www.tenswall.com
EMAIL: support@tenswall.com
US ADD: 137 S 8TH AVE STE J, LA PUENTE, CALIFORNIA 91746
TEL: (United States) 1-626-764-1033 (PST) 9am - 5pm, Mon to Fri (United Kingdom) 020-3807-3054 (CEST) 9am - 5pm, Mon to Fri

(16)

Warranty Service Card

* To ensure product enjoys the warranty service, please keep the dealer name, purchase date, warranty card for valid reference.
Warranty period is 12 months under normal use from the date of purchase.

Name	E-mail
Date of Purchase	Dealer
Time of Failure	Contact Information