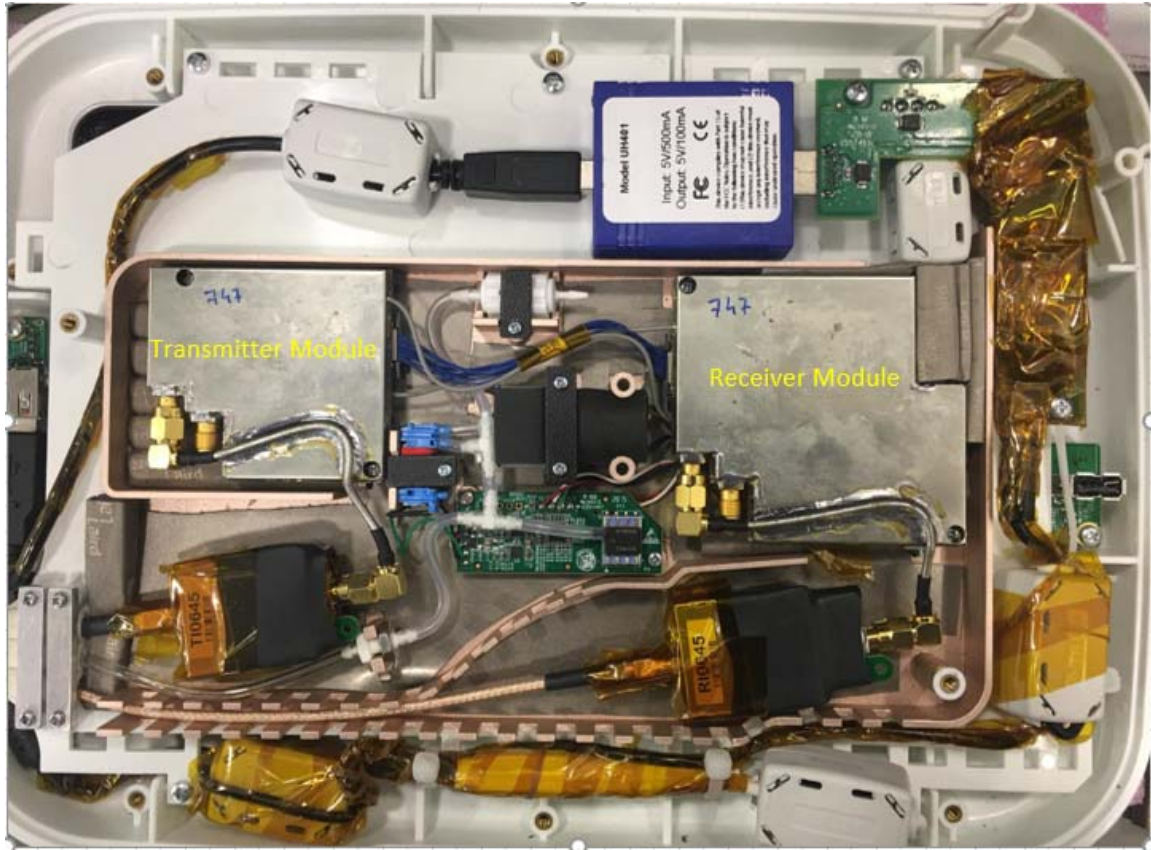


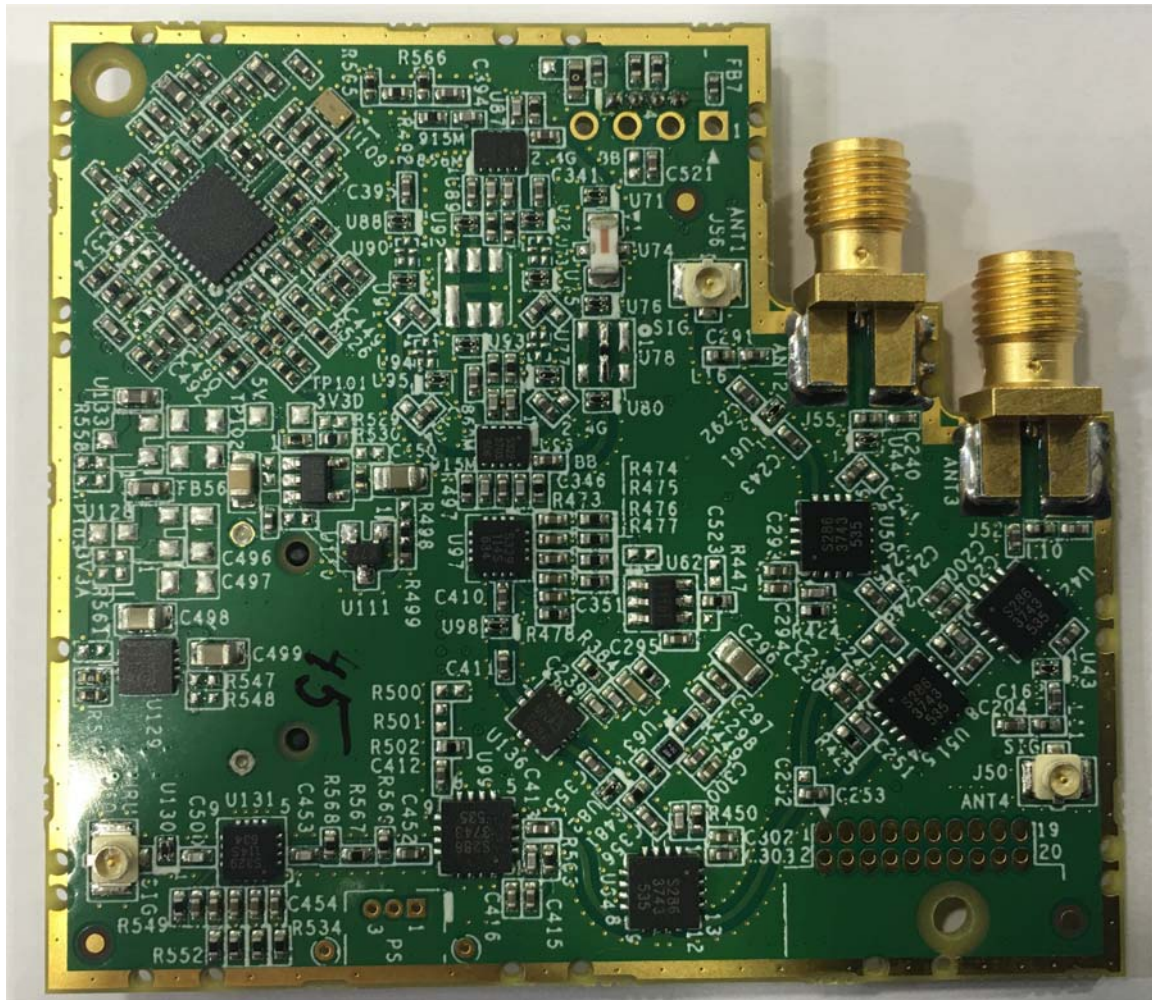
INTERNAL PHOTOGRAPHS

This document contains 9 photographs

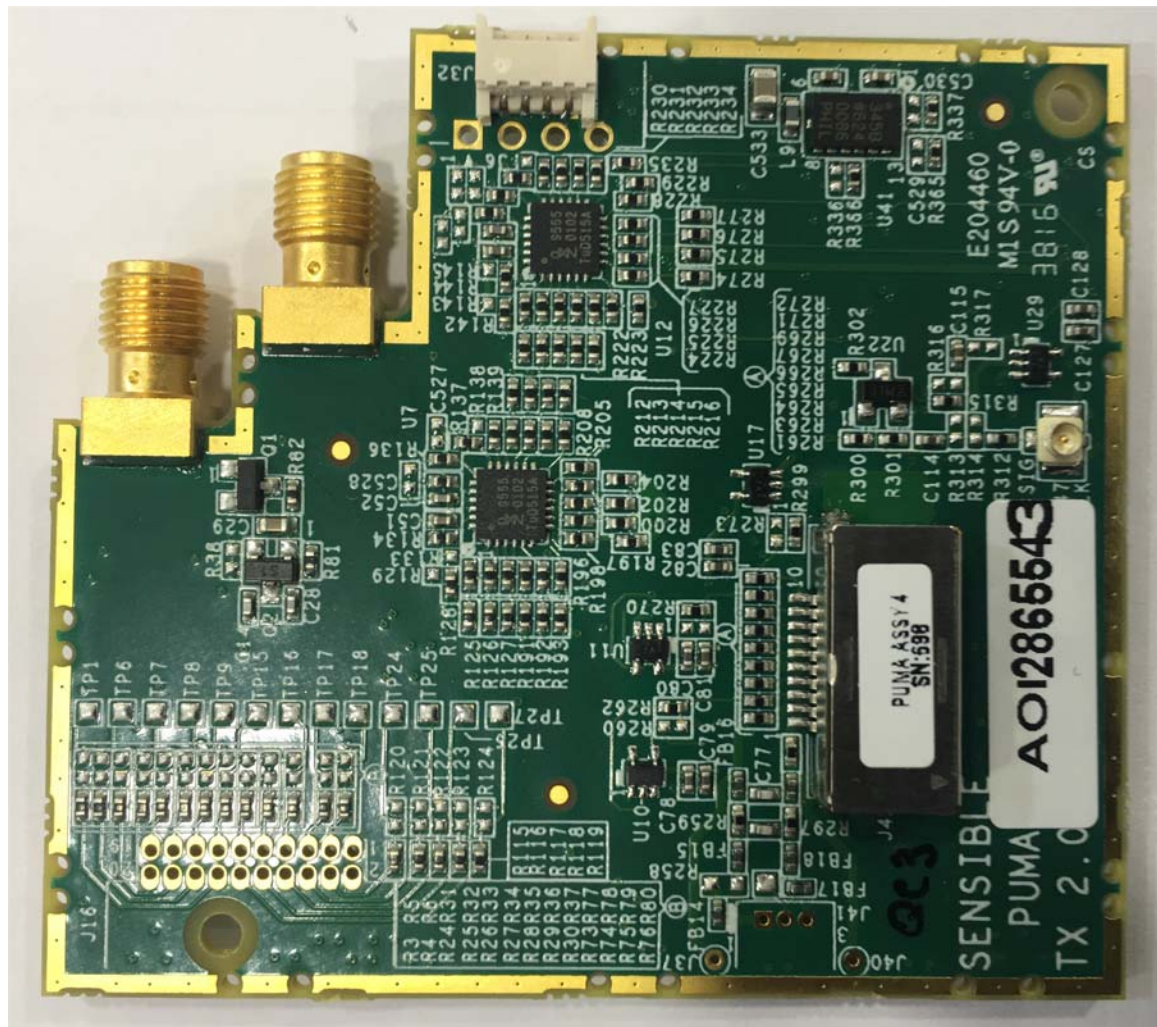
Photograph No.1
ReDS system internal view



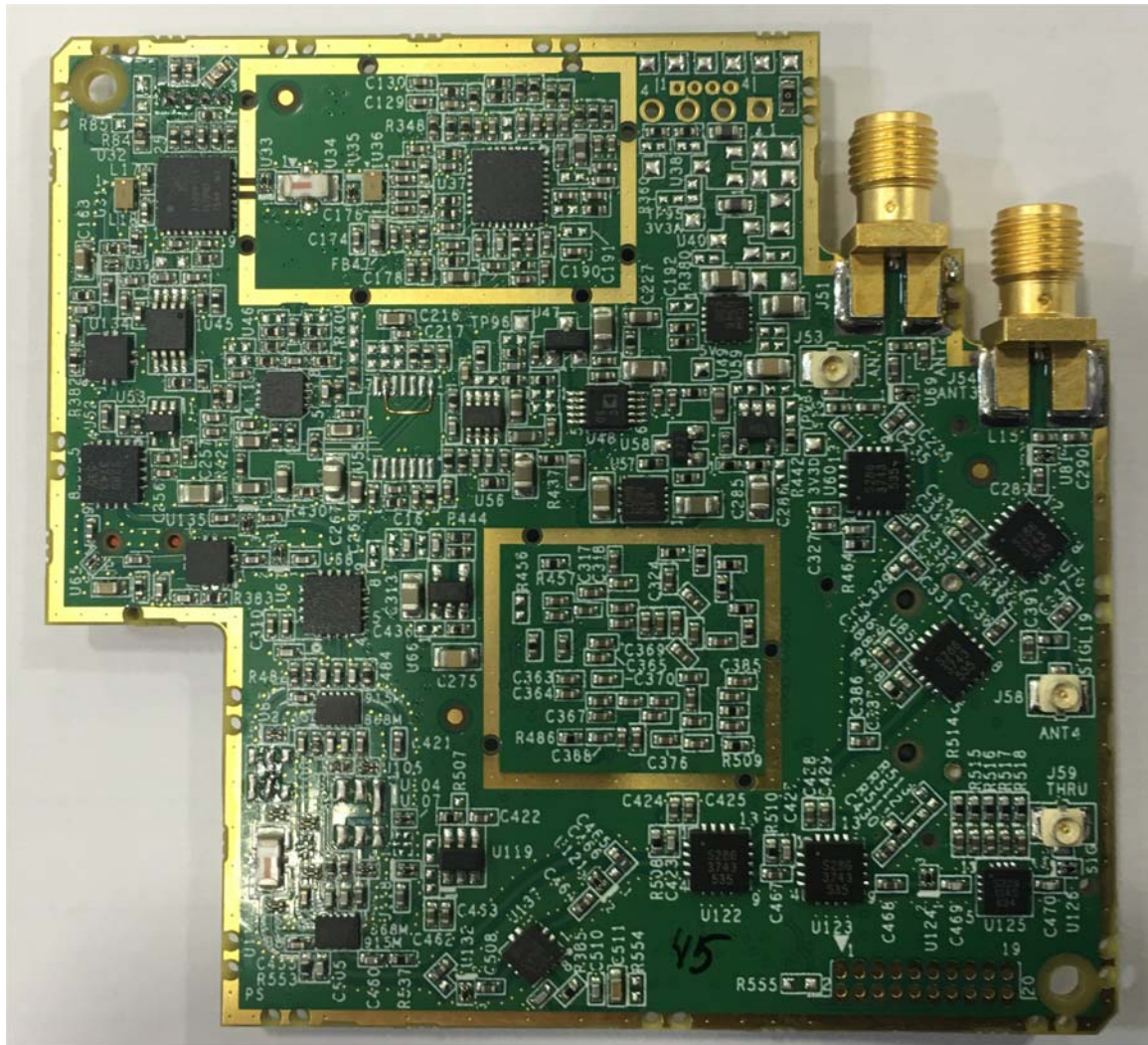
Photograph No.2
Transmitter PCB front view



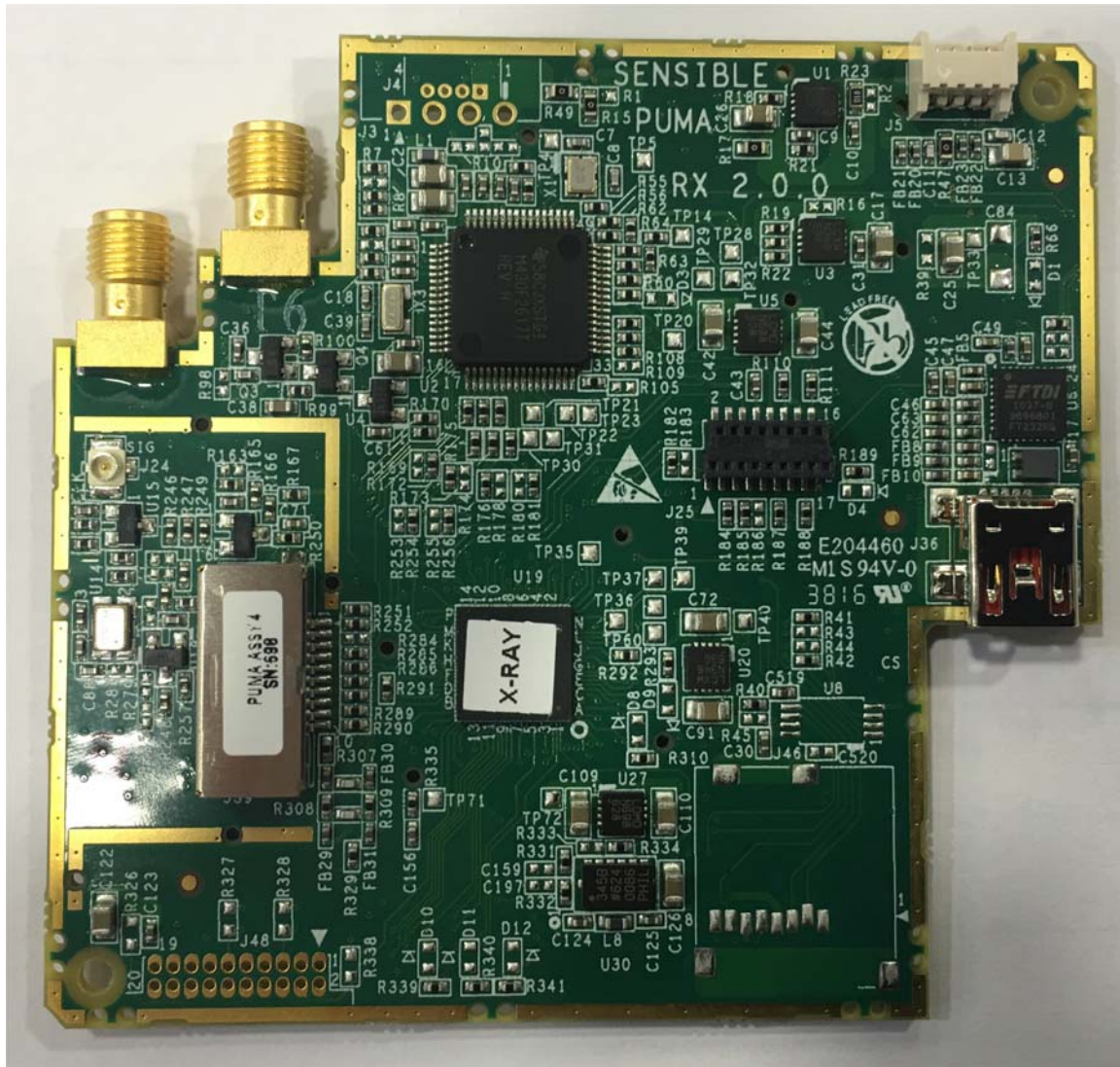
Photograph No.3
Transmitter PCB second side view



Photograph No.4
Receiver PCB front view



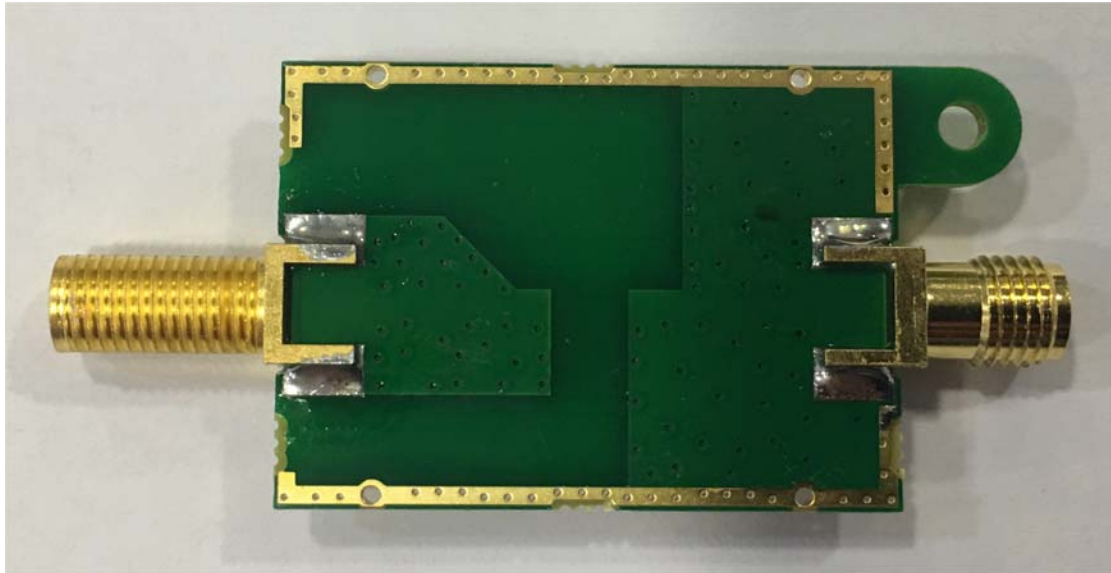
Photograph No.5
Receiver PCB rear side view



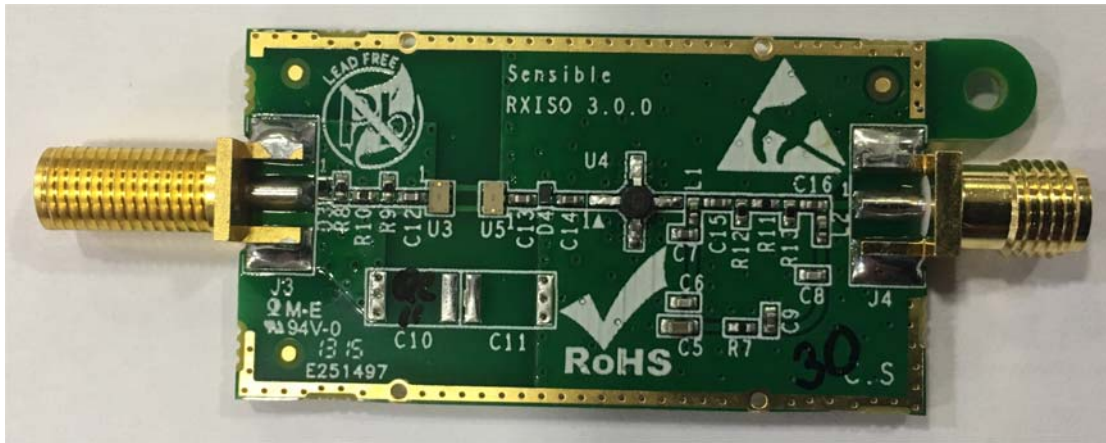
Photograph No.6
Transmitter isolator PCB front view



Photograph No.7
Transmitter isolator PCB second side view



Photograph No.8
Receiver isolator PCB front view



Photograph No.9
Receiver isolator PCB second side view

