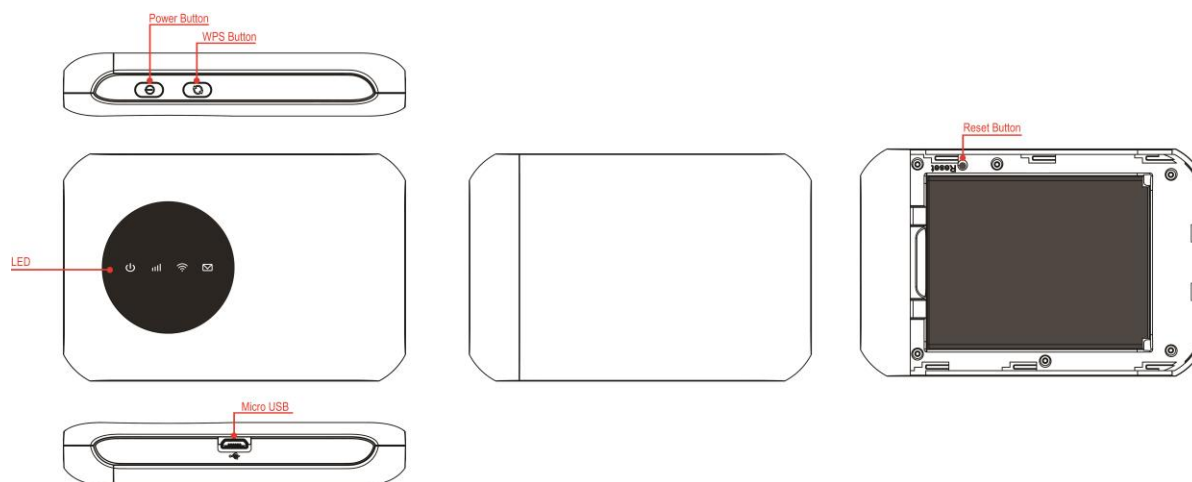


# R800C User Manual

## Interface



key	Illustrate
Power key	Long press over 5 seconds to power on and long press to power off
WPS	Press to active the WPS
Reset	The Reset button is on the opposite side of the machine. If you forget Administrator password or Wireless network key, you can press the

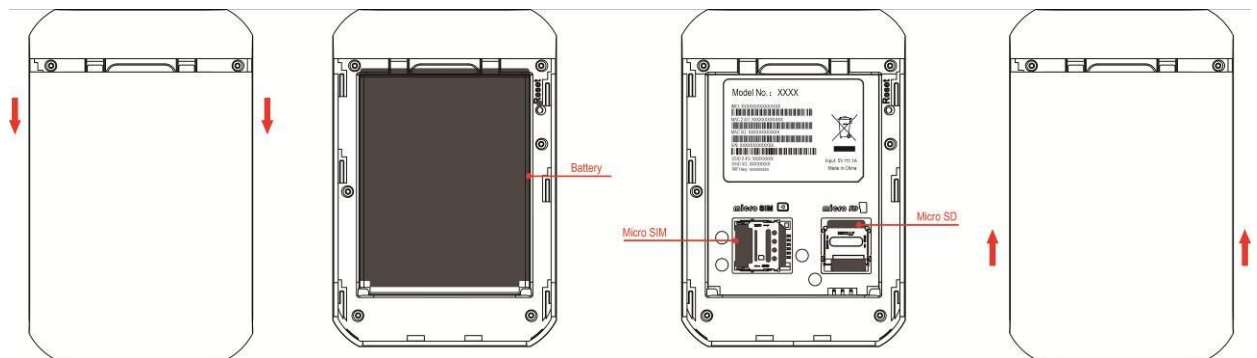
### LED Indication

Indicator	Color	Working Status	
Power LED	Green	Solid: booting up the device	Blink: Turn on-0.5s Turn off-0.5s
	Amber	Blink: Charging	
	Blue	Solid: Battery High(100%-60%) or Charge Completed	
	Amber	Solid: Battery Middle (60%-15%)	
Red	Solid: Battery too low nearly shut down (<15%)		
SMS LED	Blue	Blink: New SMS	
Signal LED	Blue	Blink: Register to <b>LTE</b> (not connect)	
		Solid: Connected to <b>LTE</b> network	

	Green	Blink: Register to <b>3G</b> (not connect) Solid: Connected to <b>3G</b> network	
	Purple	Blink: Register to <b>2G</b> (not connect) Solid: Connected to <b>2G</b> network	
	Red	Blink: No Service/Device Error	
WiFi LED	Blue	Solid: No Client Blink: Client is activated	Blink: Turn on-0.2s Turn off-0.1s
		Blink: WPS is active	

## Installation

Follow the diagram to install the SIM card and SD card



Tips: Always switch the device off and disconnect the charger before removing the battery.

1. Remove the back cover and battery;
2. Insert the SIM card and SD card. Ensure that the contact area on the card is facing down and that the beveled corner on the card is facing the beveled corner on the holder.
3. Align the battery contacts with the battery compartment connectors, and insert

the battery. Replace the back cover lastly.

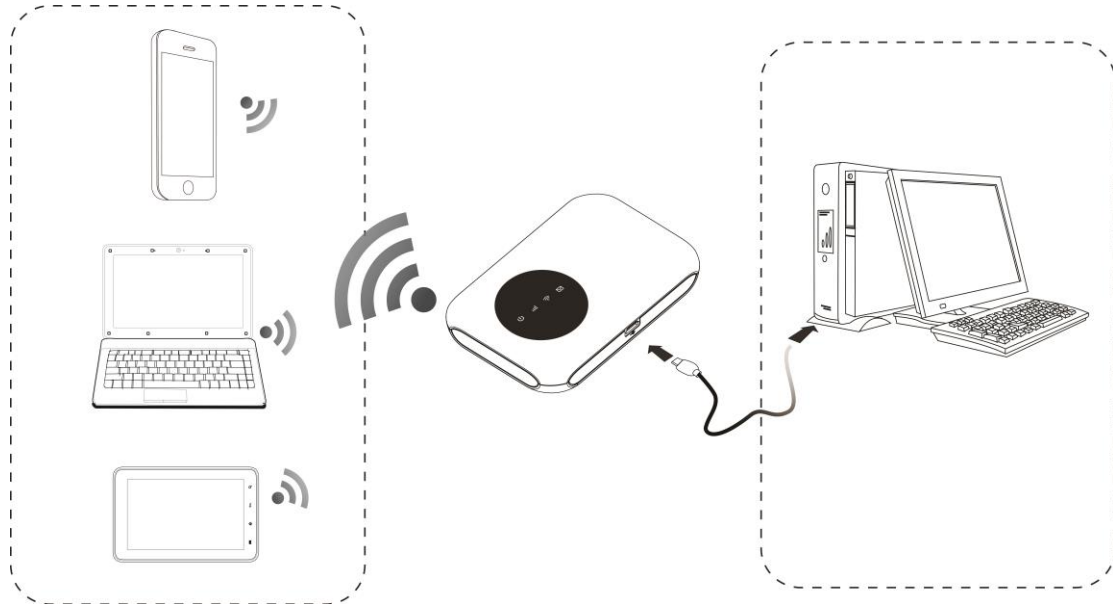
## R800C Usage

---

R800C support 4G/3G/2G networks. Insert the SIM card, Wi-Fi devices and the computer can access the Internet through R800C, enjoy high-speed network services. Smart phones, tablet computers, game consoles and other Wi-Fi devices can be connected with the R800CC Wi-Fi connection for Internet access.

Computers & laptops etc. may be connected to the R800C via USB cable for Internet Access.

**R800C computer for the first time via a USB connection, you need to follow the prompts to install the driver**



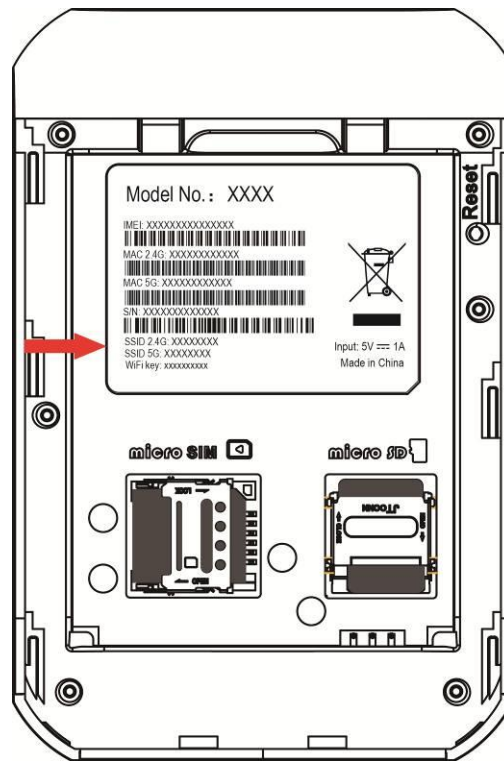
## Wi-Fi wireless Internet access

---

In order for a Wi-Fi device to establish a connection with the R800C for the first time, you will need to select the R800CSSID (Wi-Fi name) & enter the relevant Wi-Fi

password, which you may find in the following ways:

**Method one: on the nameplate view the default SSID and Wi-Fi passwords**

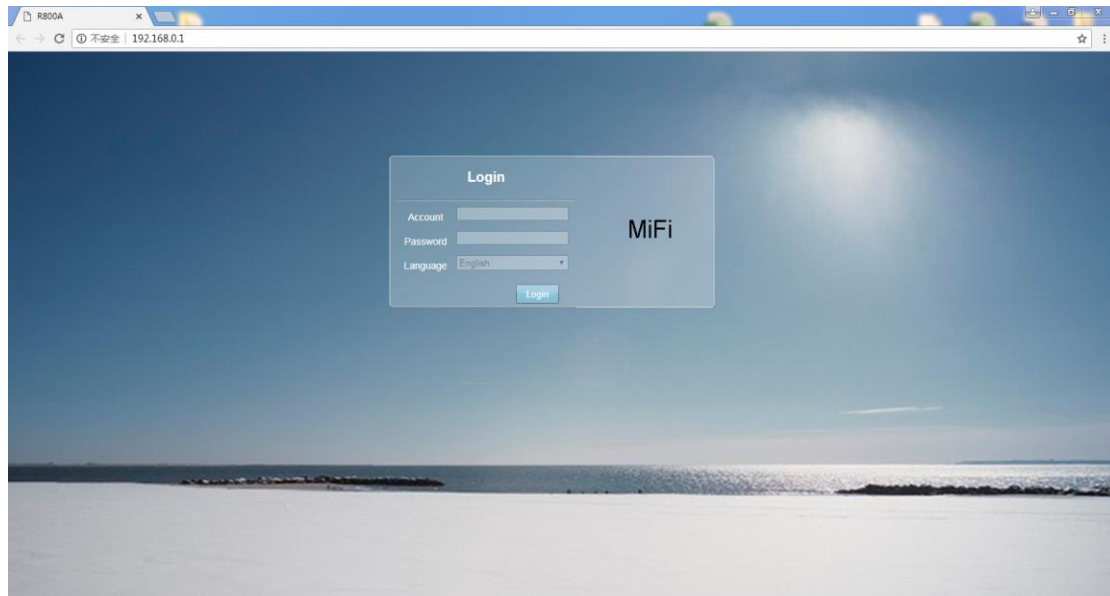


**Method Two: Login management page view**

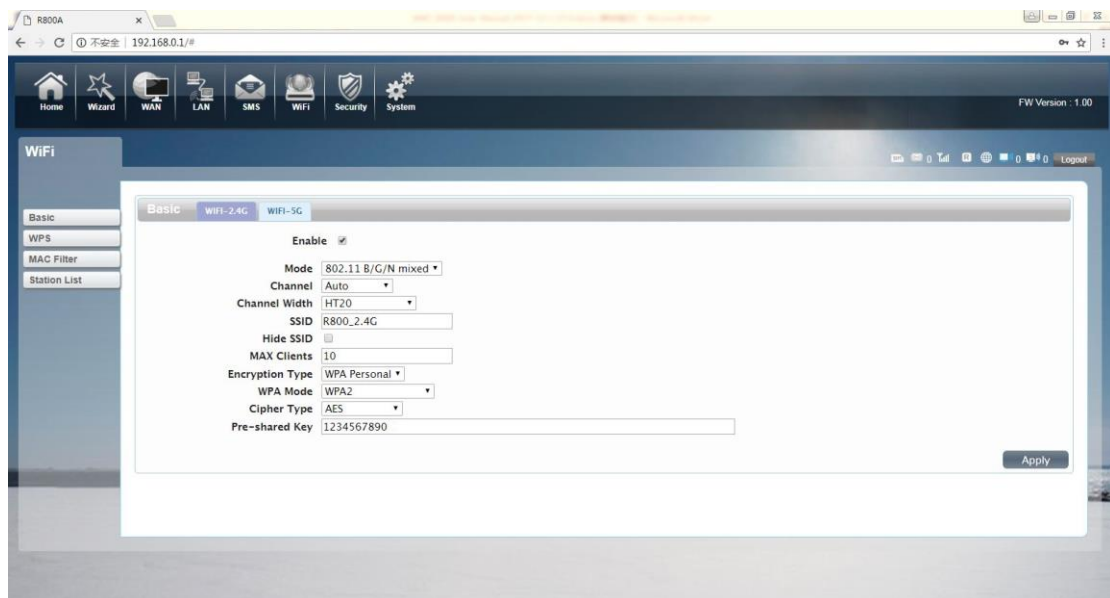
1. Computer, open your browser, input http://192.168.0.1 and enter.

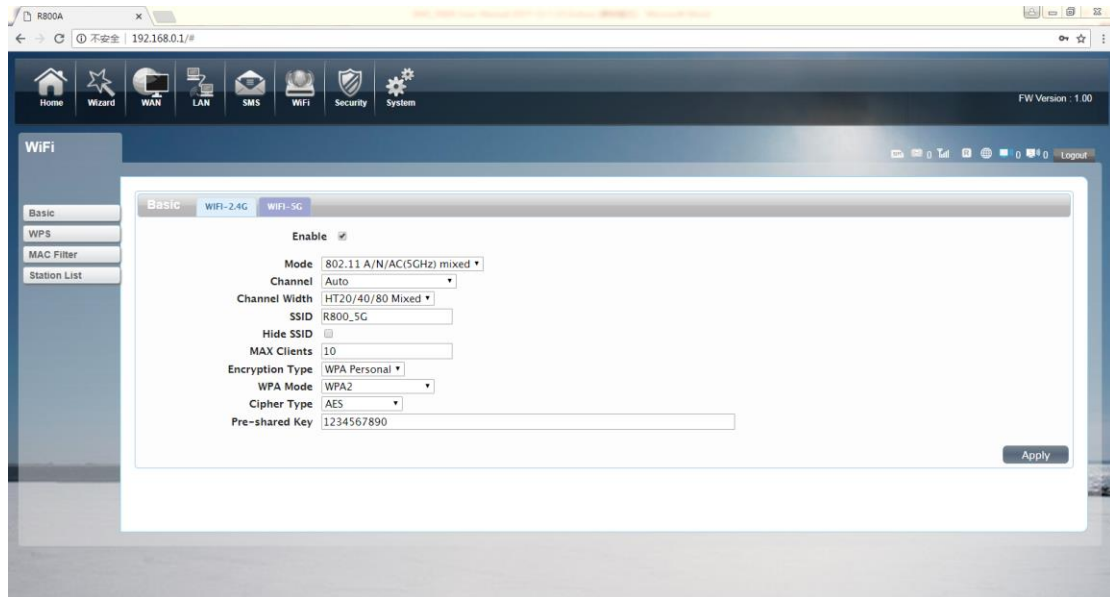
- The default Account is admin
- The default Password is admin

Enter the Account and Password, login administration pages



2. Enter the Wi-Fi menu, view the default SSID and Wi-Fi password. The default 2.4G SSID is R800C\_2.4G. The default 5G SSID is R800C\_5G. The Wi-Fi password are both 1234567890.





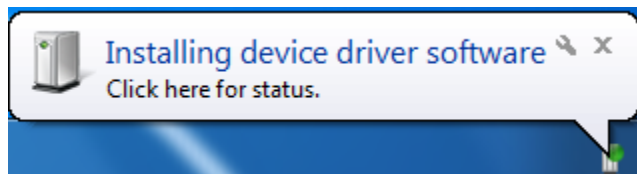
★Recommend that you start using R800C administration pages after setting a convenient landing memorizing SSID and a higher safety factor Wi-Fi passwords

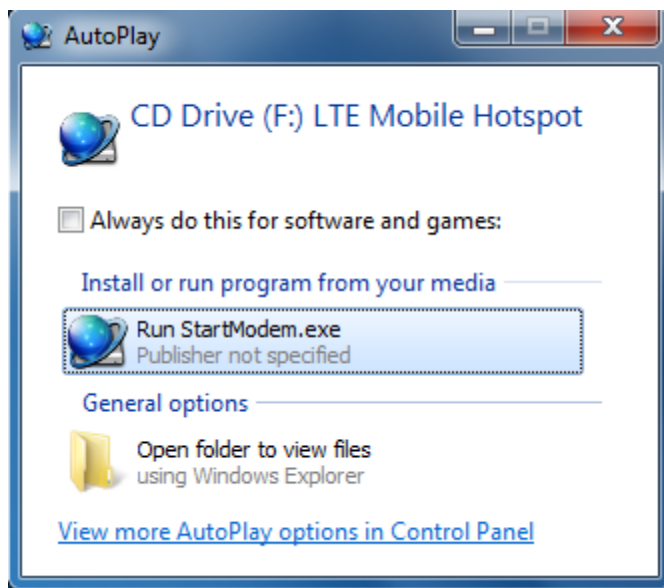
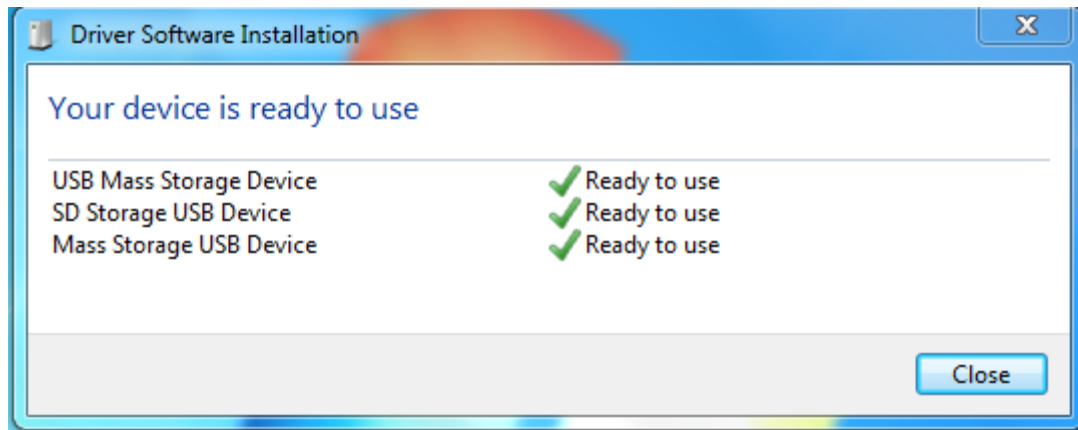
## Install the driver and connecting the device


---

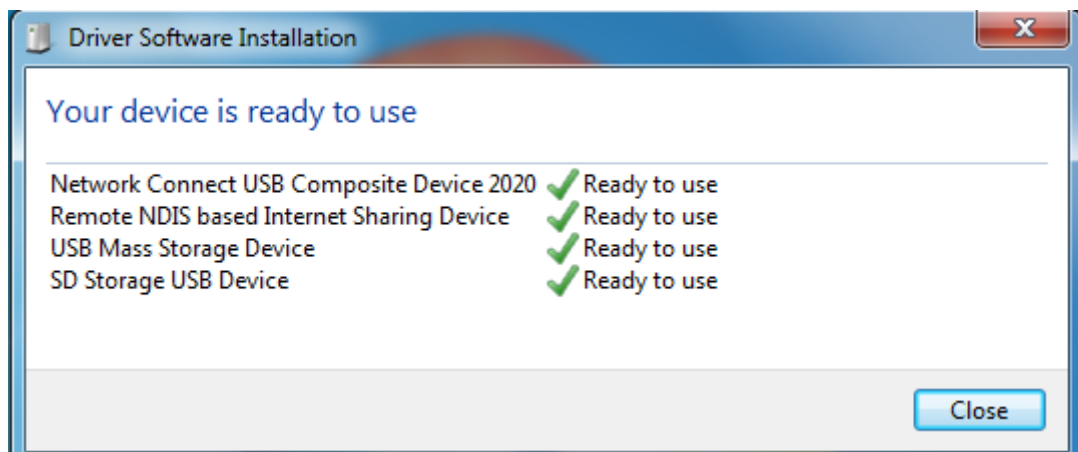
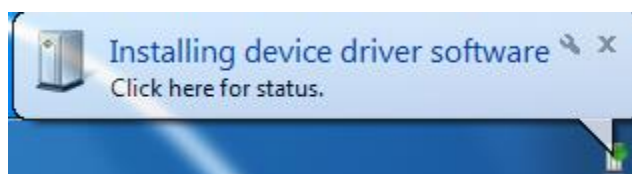
### USB Connection: Windows 7 for example

1. Keep R800C powering on, Plug the device into your computer, it will shows like the following pictures step by step.

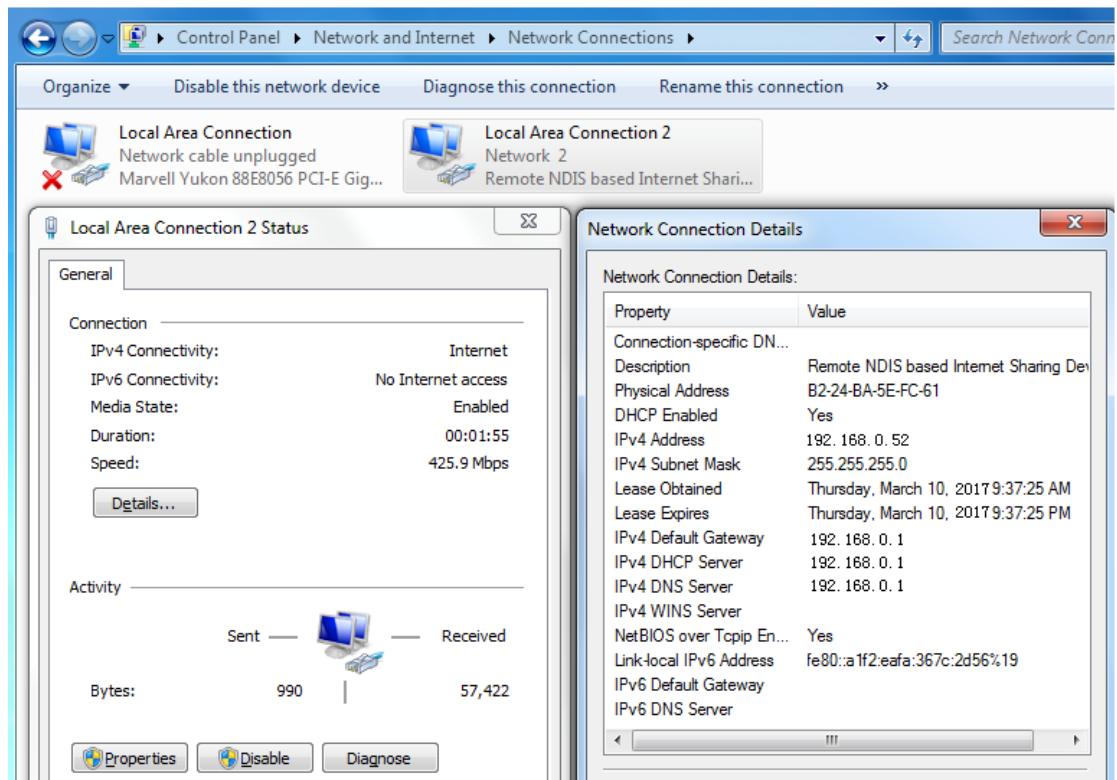




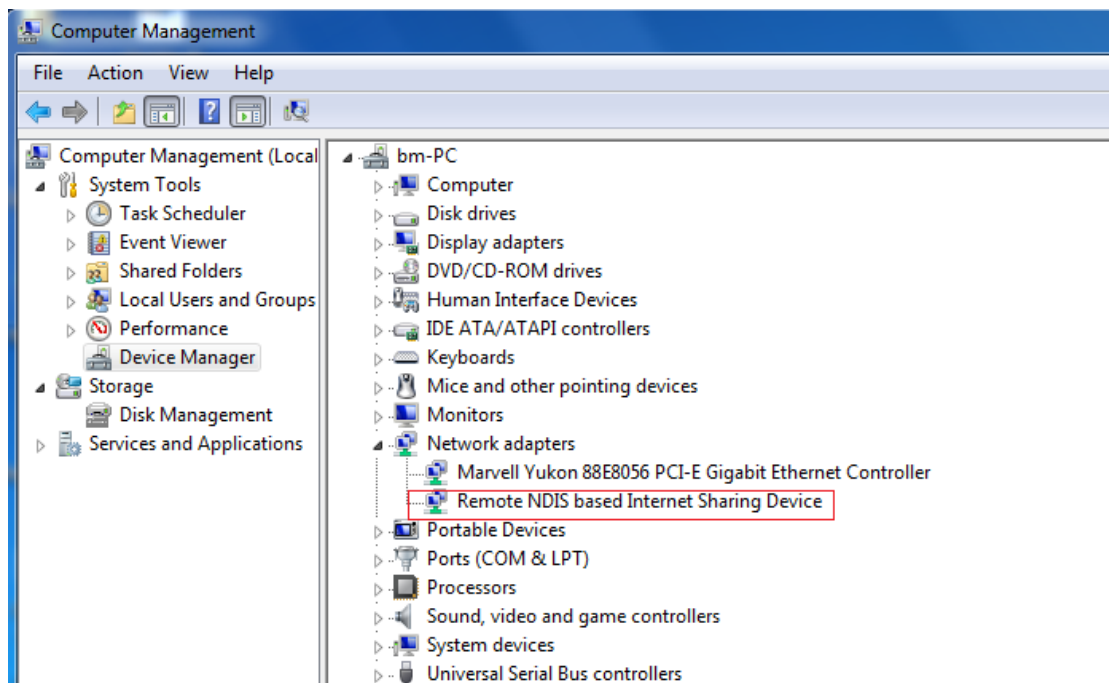
2. Double-click the  Run StartModem.exe, wait for the installation to complete



3. Check the network card is installed correctly, like the following pictures



Or,



**Establish Wi-Fi connection: you must ensure that the computer equipped with a wireless network card. If the computer showed the presence of Wi-Fi**

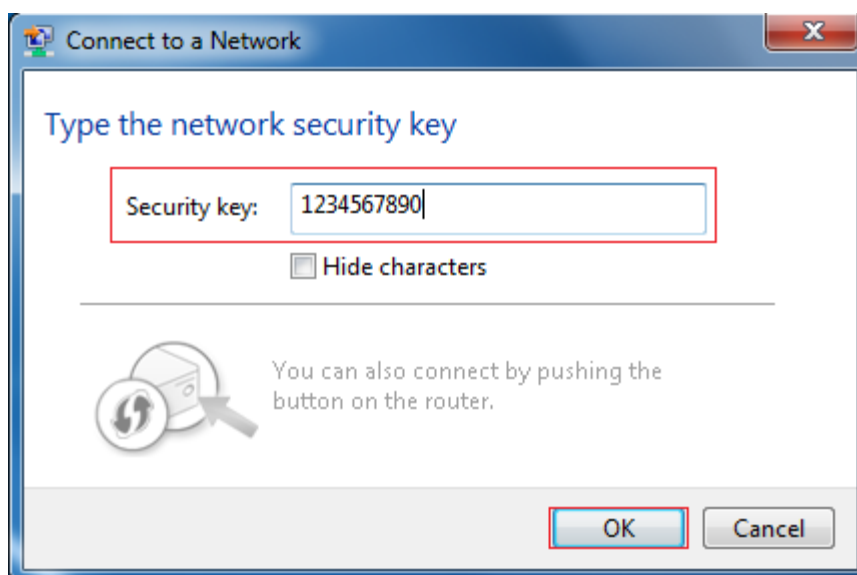


connectivity, the wireless LAN is available. Otherwise, you need to check your wireless network card is working properly. (The following will be 2.4G Wi-Fi as an example)

1. In the Wi-Fi list, select the SSID consistent with R800C Wi-Fi, click Connect



2. Enter the correct Wi-Fi password, click OK



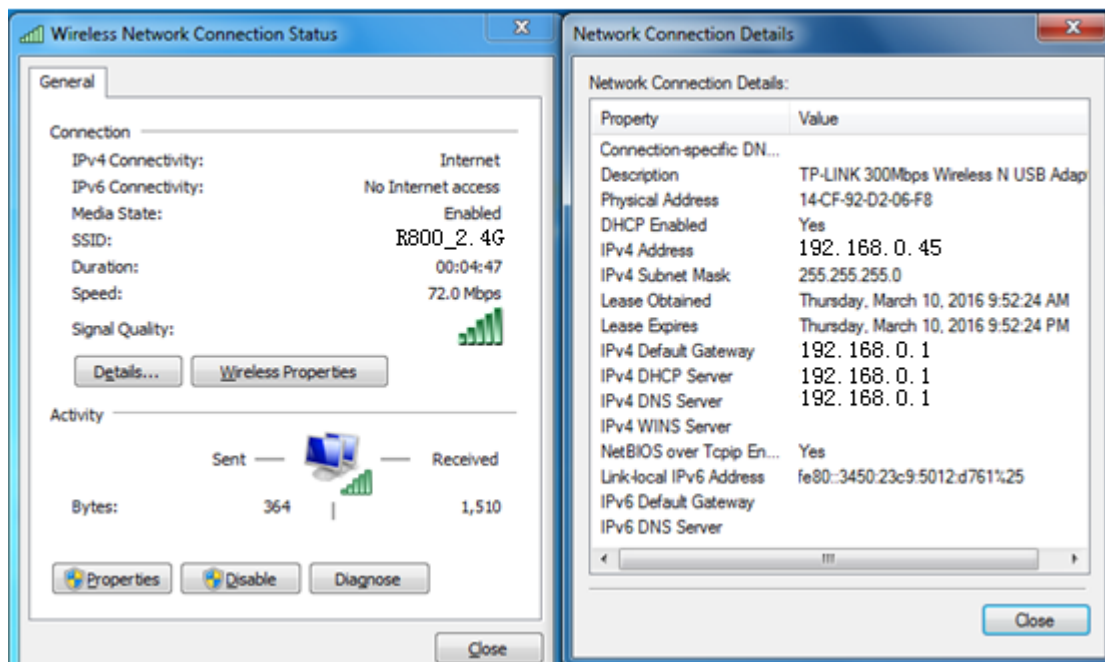
3. Wait a moment, Wi-Fi connection is displayed next to the name, Wi-Fi

connection is successful



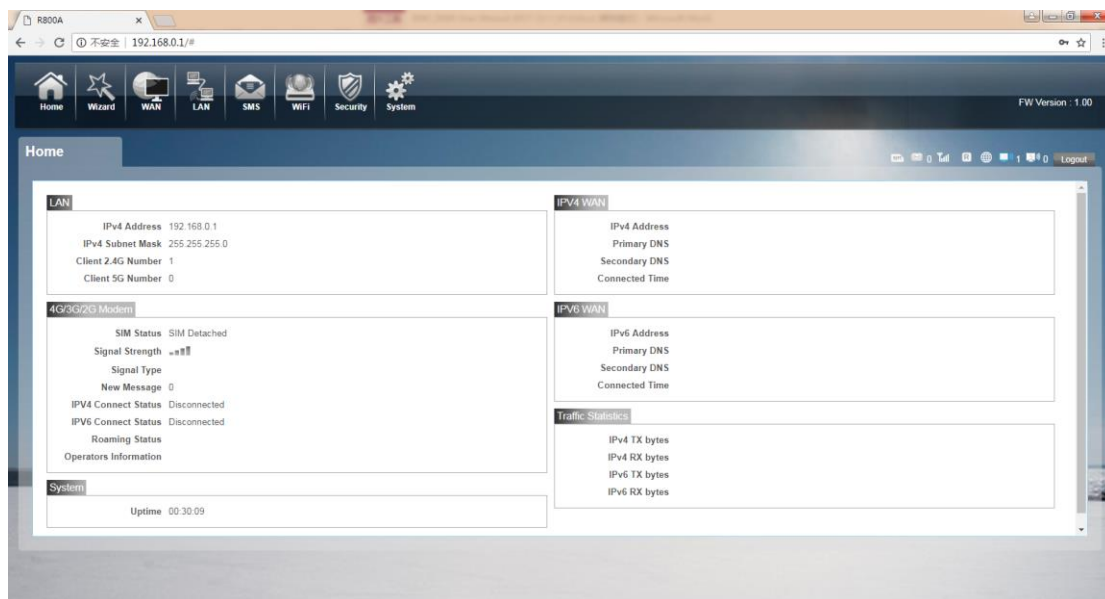
4. Check the network card is installed correctly, like the following pictures





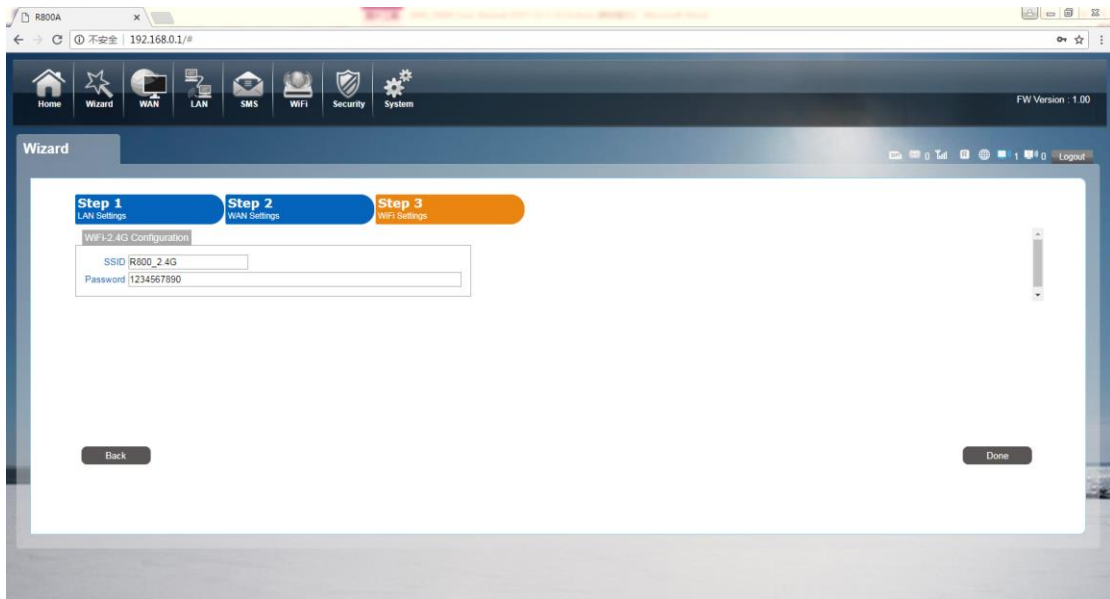
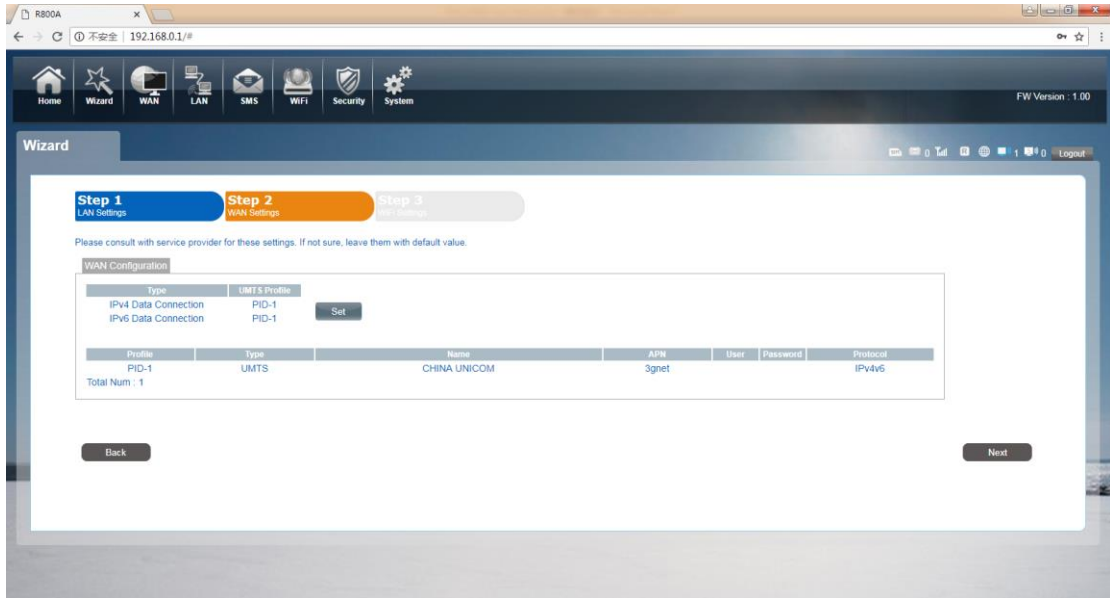
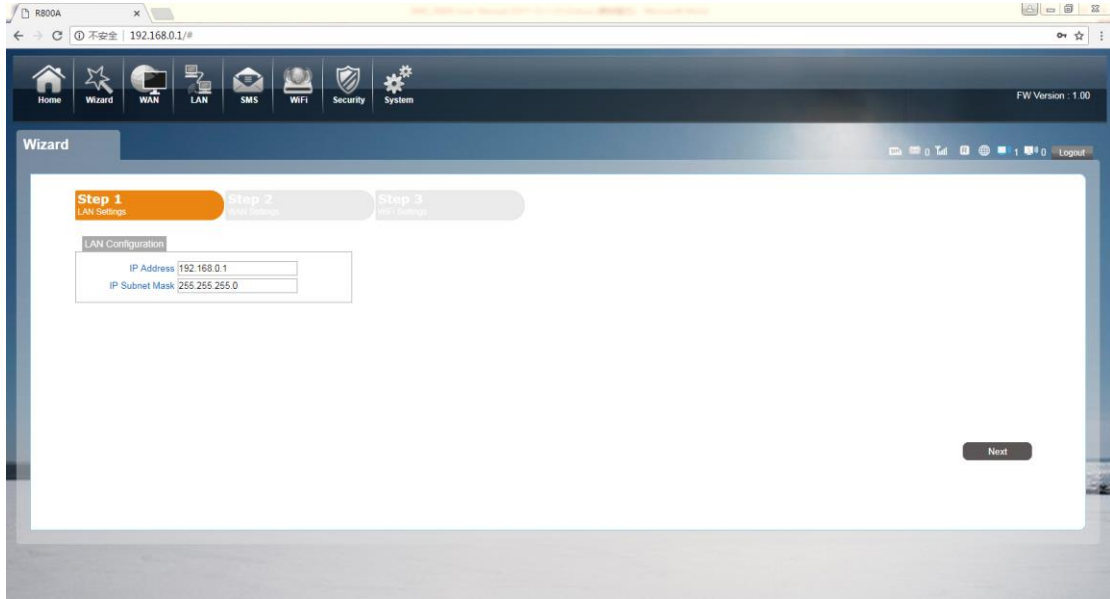
## Web

### ●Home



First part of the main display settings and network status information, such as IP address, SIM card status, type and quality of the network signal, whether it is roaming, with or without a new message, and traffic statistics, and system uptime, and so on.

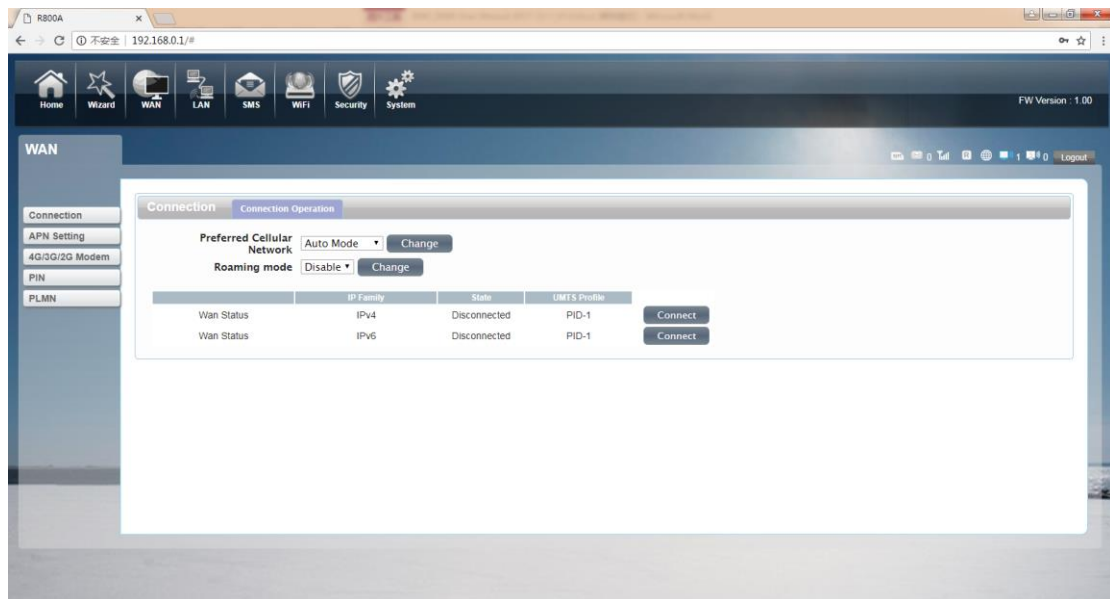
### ●Wizard



You can quickly change the LA configuration, set the APN, and change the 2.4G SSID/Password through the wizard function.

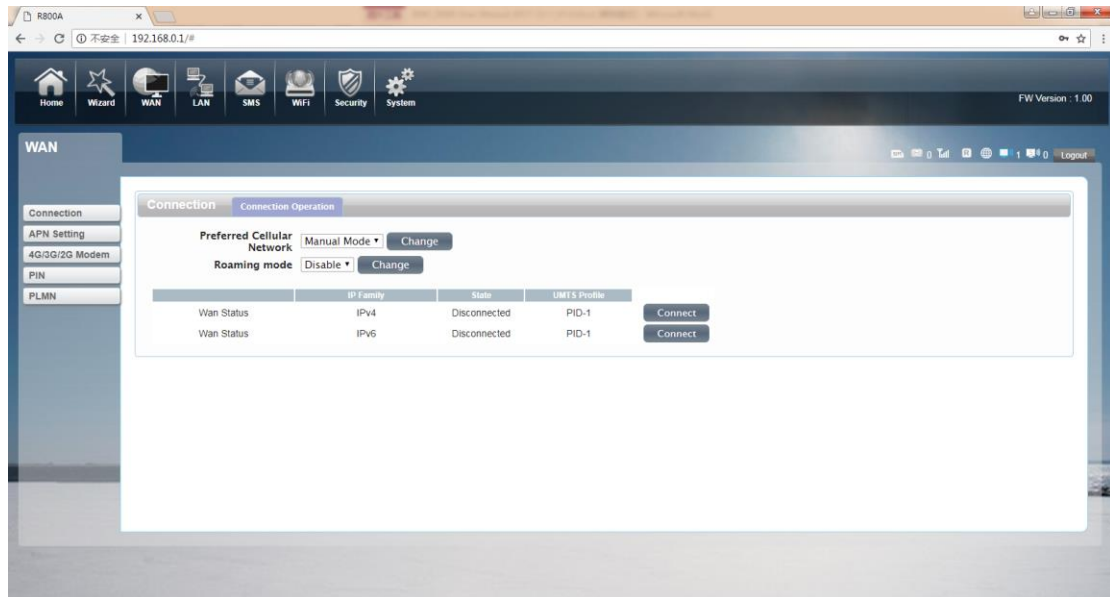
## ●WAN

### 1. Connection

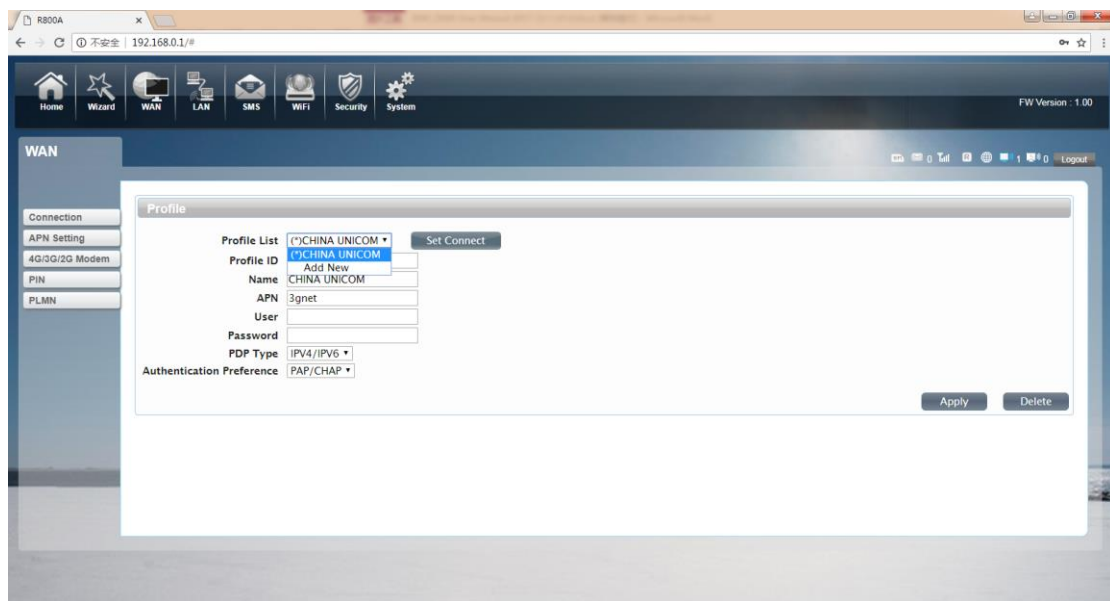


Dialing Mode:

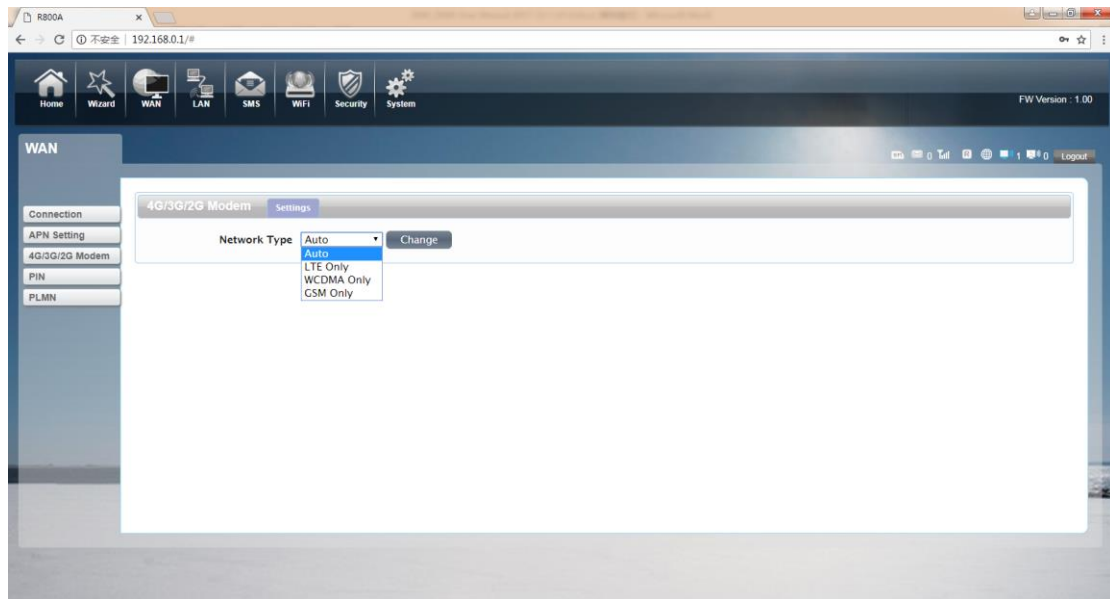
Select the Auto Mode, after you turn on R800C without additional operations, the device will automatically connect to the network; select the Manual Mode, you need to manually connect to the network after opening the R800C management page.



2. APN Setting: You can customize the network configuration or manually add the new APN and set defaulting.

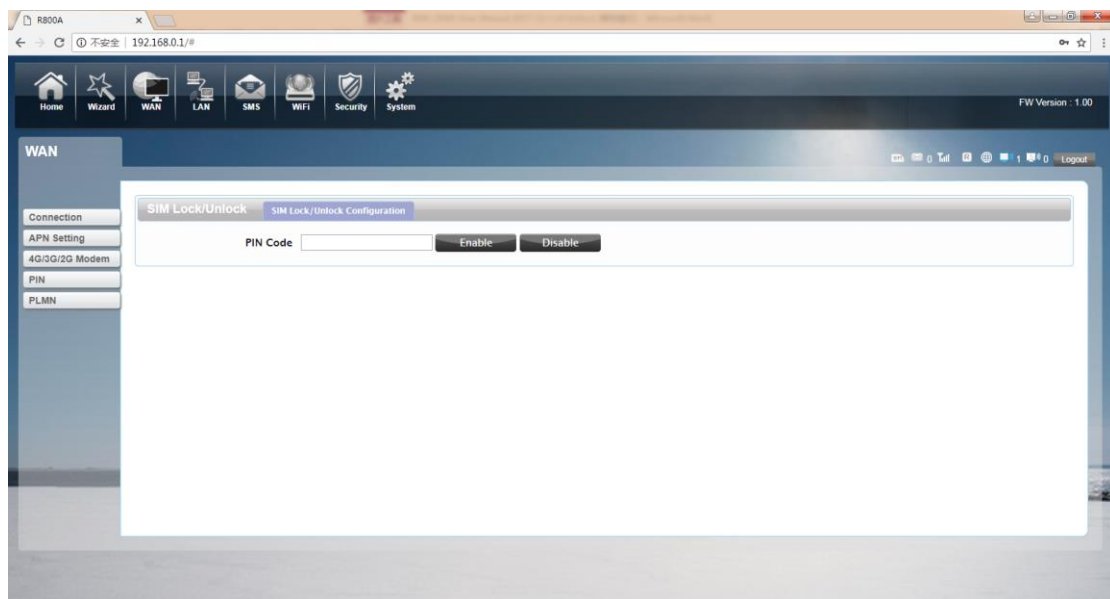


3.4G/3G/2GModem



There are four types of networks can be choose: Auto is 4G/3G/2G, Leany is using only 4G, WCDMA Only is using only 3G,GSM Only is using only 2G.

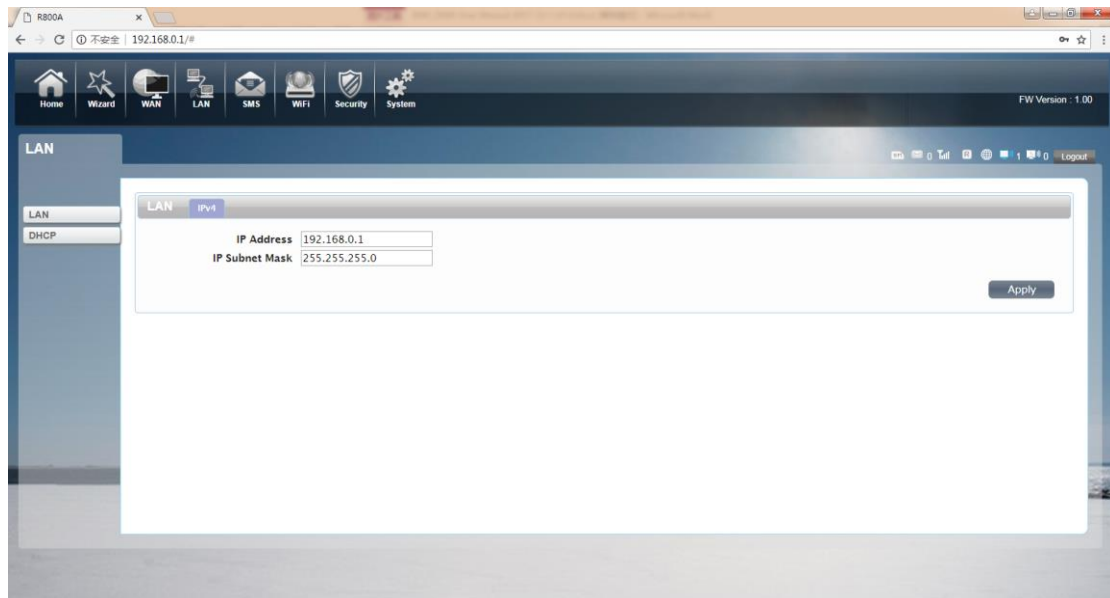
## 5. PIN



Open your PIN, if you reboot the device, you need to login management page, and the page will prompted to enter the correct PIN code, you can use the SIM card. PIN / PUK code supplied with the SIM card provided by your carrier, please consult your carrier.

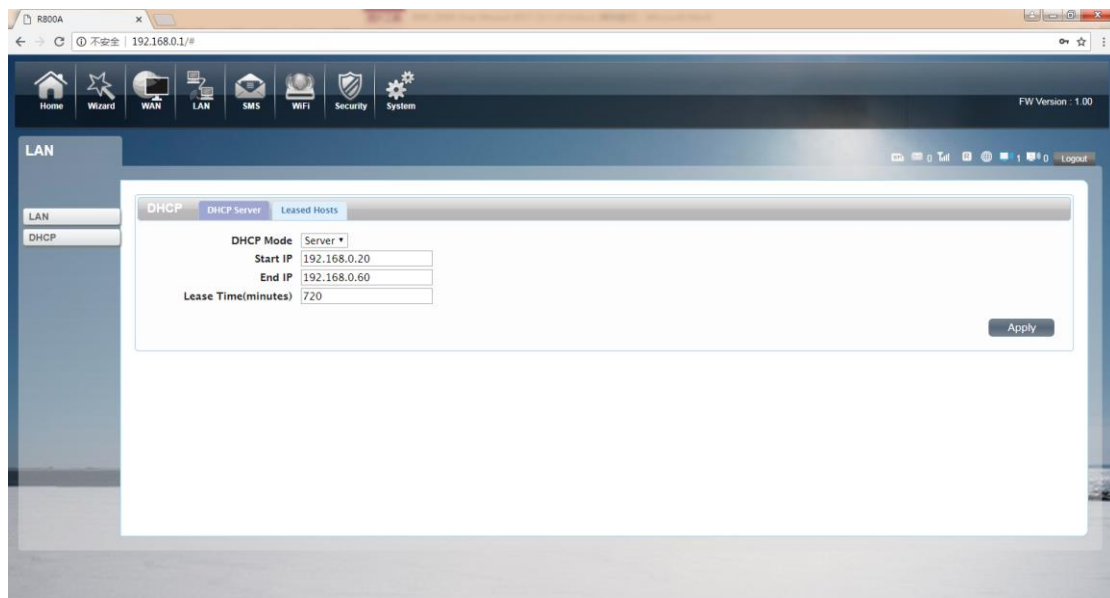
## ●LAN

### 1. LAN



We can change IP address in this page.

### 2. DHCP

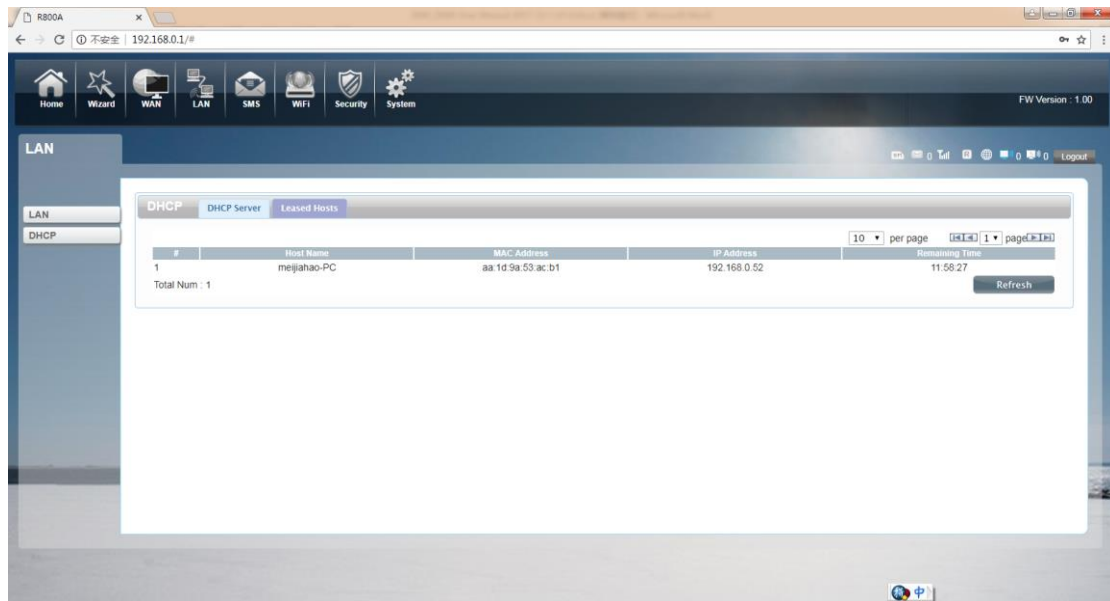


DHCP Mode: Select the server mode, the device can be done using a DHCP server; choose none, which is off the server function.

Start / End IP address: Changing DHCP assigned IP and IP segments.



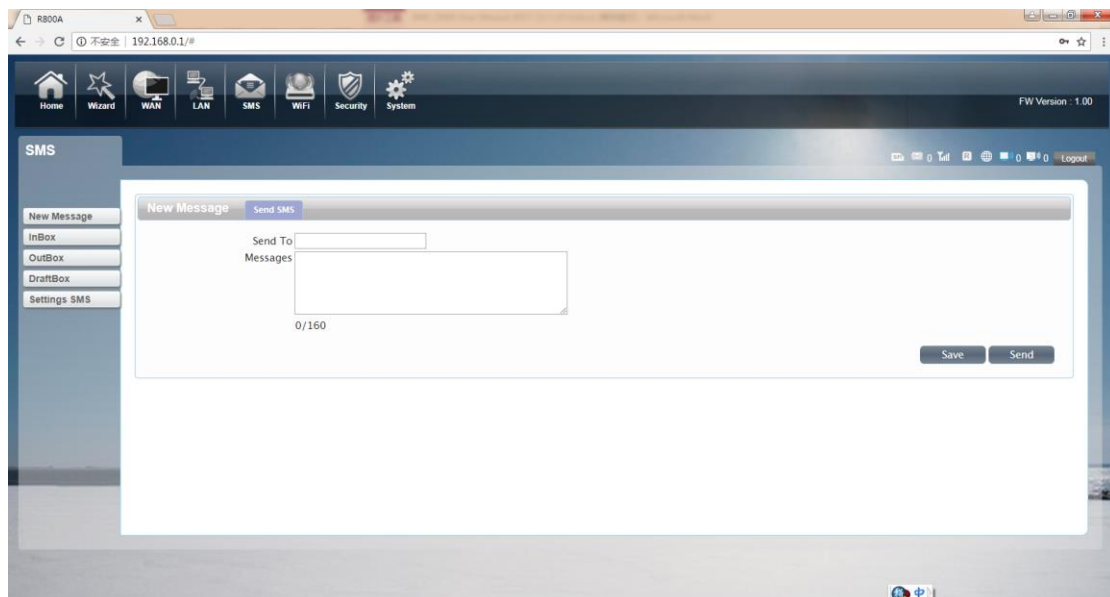
Lease Time: Each is assigned a time to use the IP



Leased Hosts: the R800C each wireless device list and USB device can view the Host name, MAC Address, IP Address, information about the Remaining Time.

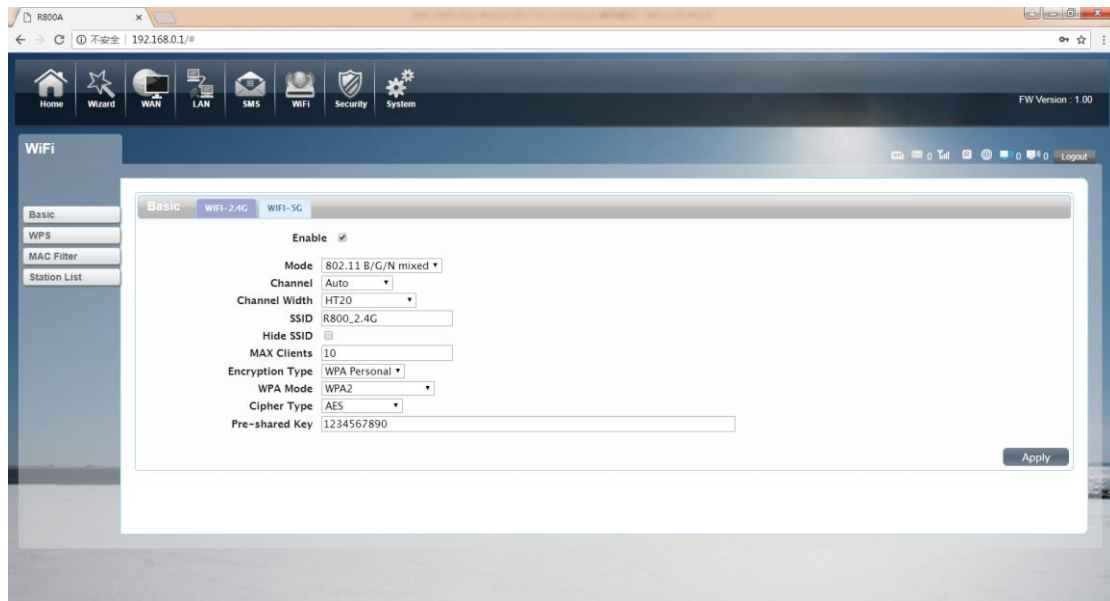
## ●SMS

When using SIM card to access network, you could also send text messages at the time. You can send, receive, reply, forward, and save test messages. You can send 10 text messages at the same time, SMS number intervals with a semicolon. Also you can setting the storage location of messages, and so on. We can operating the SMS in this page.

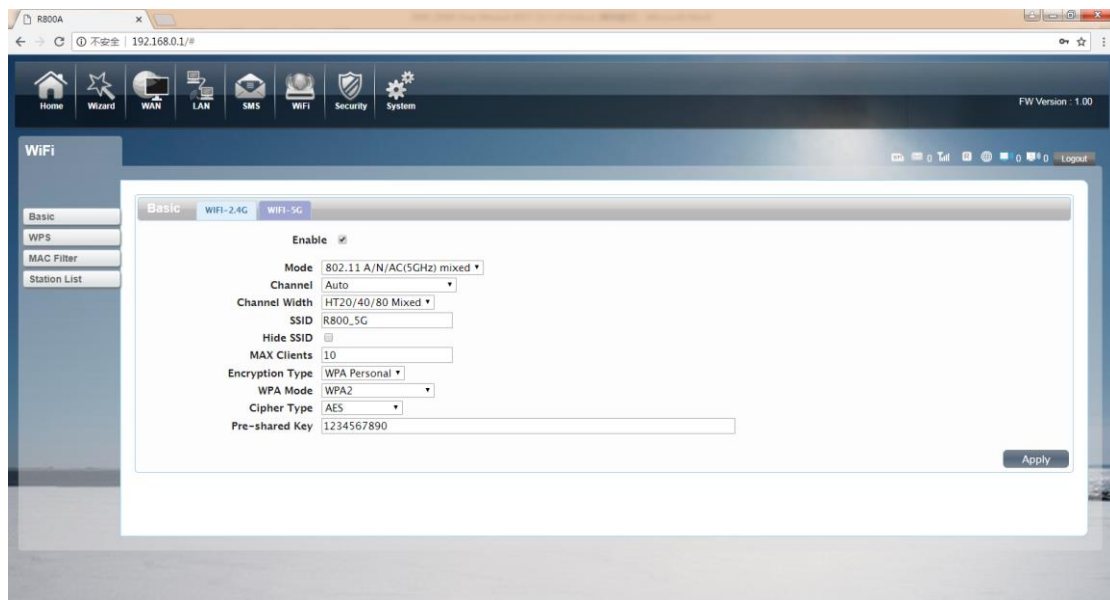


## ●Wi-Fi

### 1. Basic



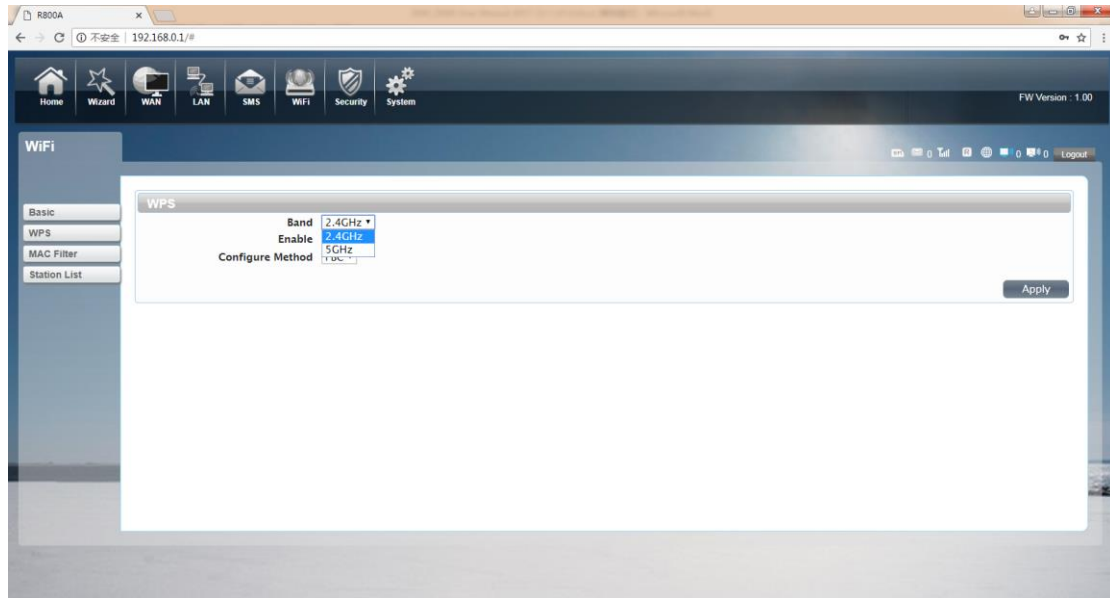
We can setting the 2.4GWi-Ficonfiguration in this page, like B/G/N mode, Channel, SSID, Wi-Fi KEY and so on.



You can also control the opening and closing of 5GWi-Fi, and set up the Wi-Fi Channel .The 5GWi-Fi of R800C supports 802.11 A/N/AC Mixed protocol. We set the Channel Width to reach HT20/40/80 Mixed. The highest 5GWIFI rate can reach

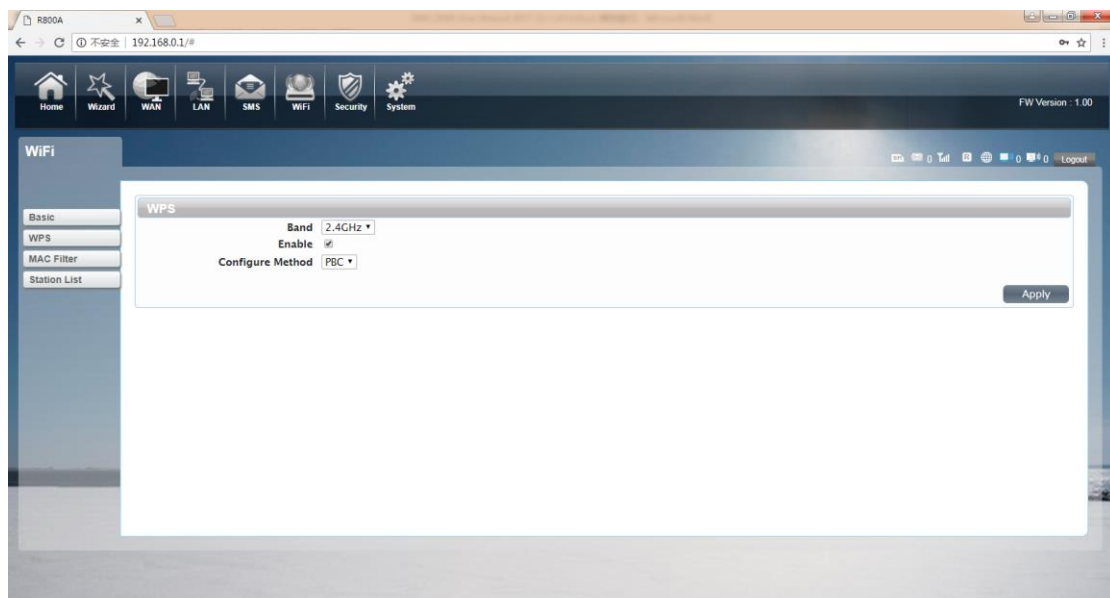
867Mbps.

## 2. WPS



R800C supports two kinds of WPS authentication, PBC and PIN. Default is PBC authentication. (The following will be 2.4GWi-Fi as an example)

### WPS PBC authentication:

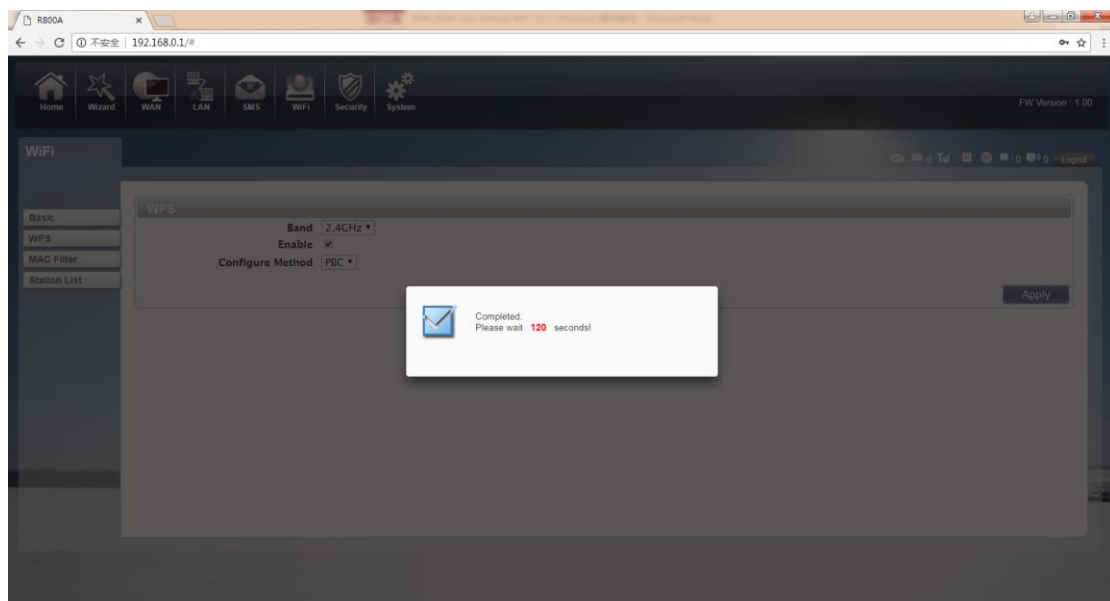


If device Wi-Fi Enabled, device supports WPS (Wi-Fi Protected Setup) and you have

forgotten or do not wish to enter your password to connect to your R800C, you may use the following available procedures for quick access to Wi-Fi.

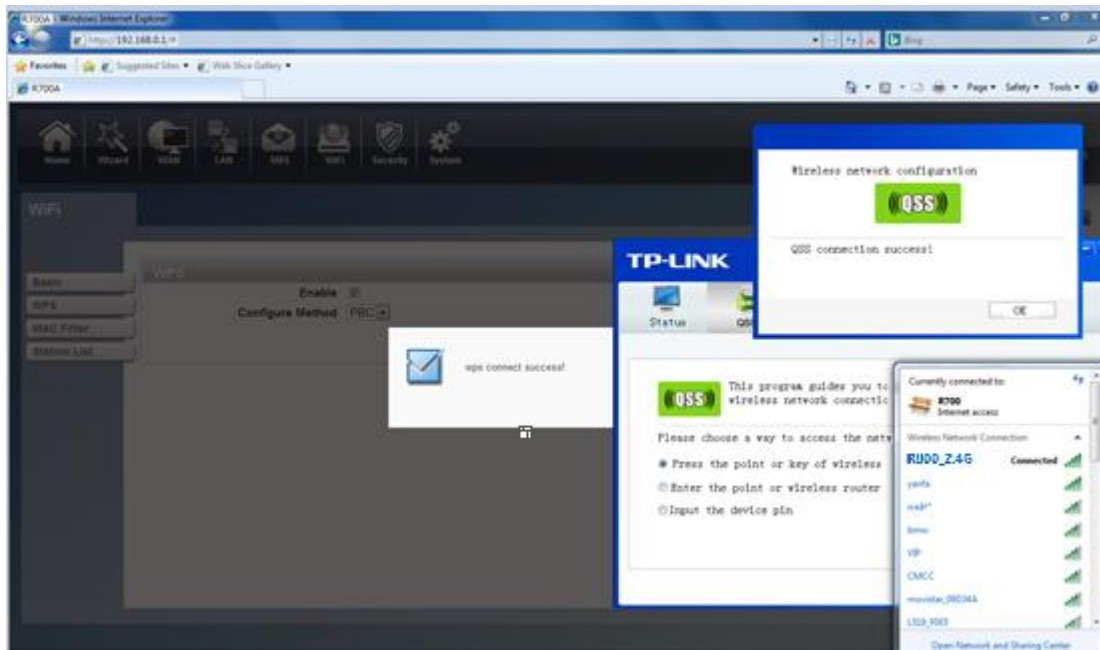
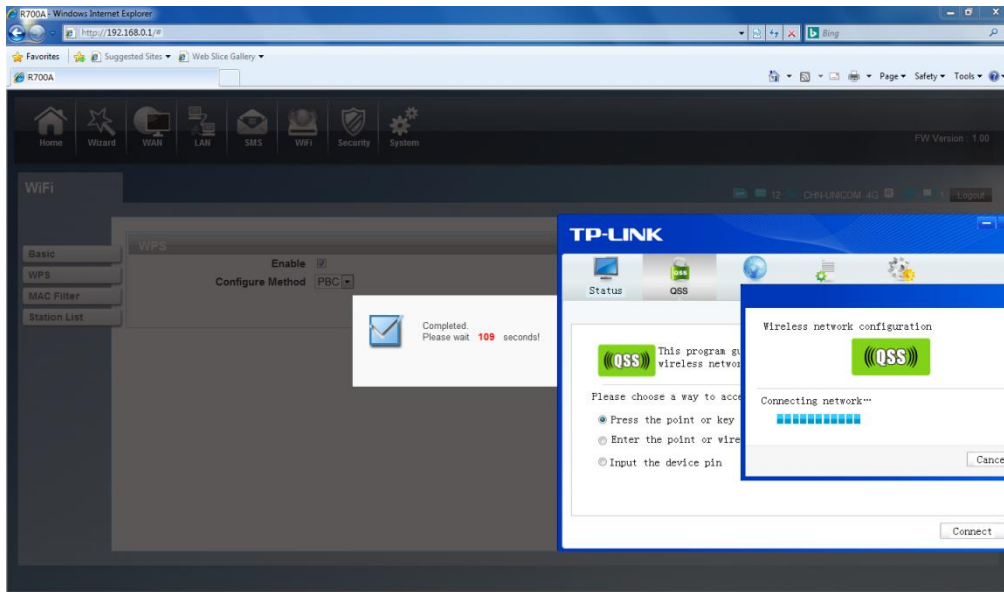
Open the WPS:

WPS can be opened by two methods. The first method is, enter the management interface page, press the "Apply" button, and open the WPS. It will last 120 seconds. Like the following picture.



Using WPS to connecting the R800C (Computer for example):

You can press the WPS button on the wireless card if your wireless card also supports WPS authentication. Waiting for a moment, it will be prompted to connect successfully.

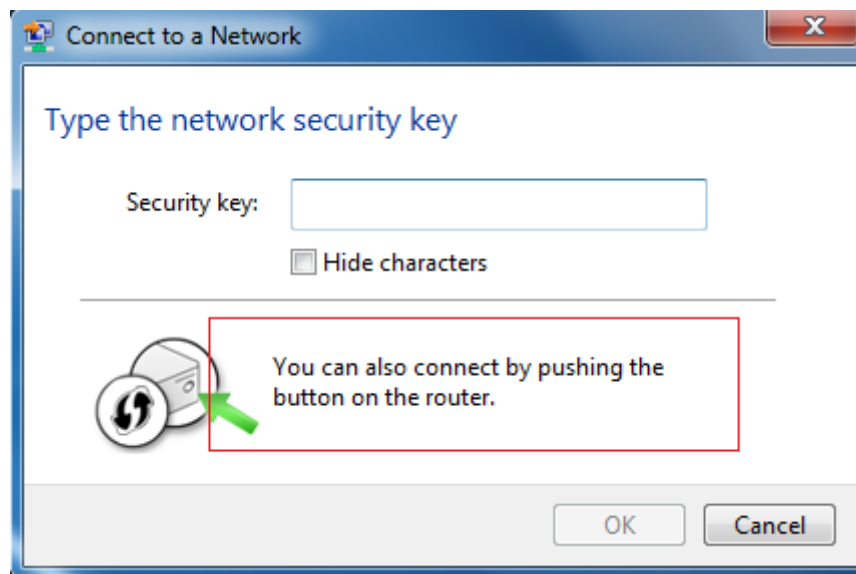


Or

Select the SSID of the device and connect. Then you can see like the following picture.



The second method, Select the SSID of the device and connect



Press the WPS button on the R800C, activate the WPS. It will last 120 seconds.

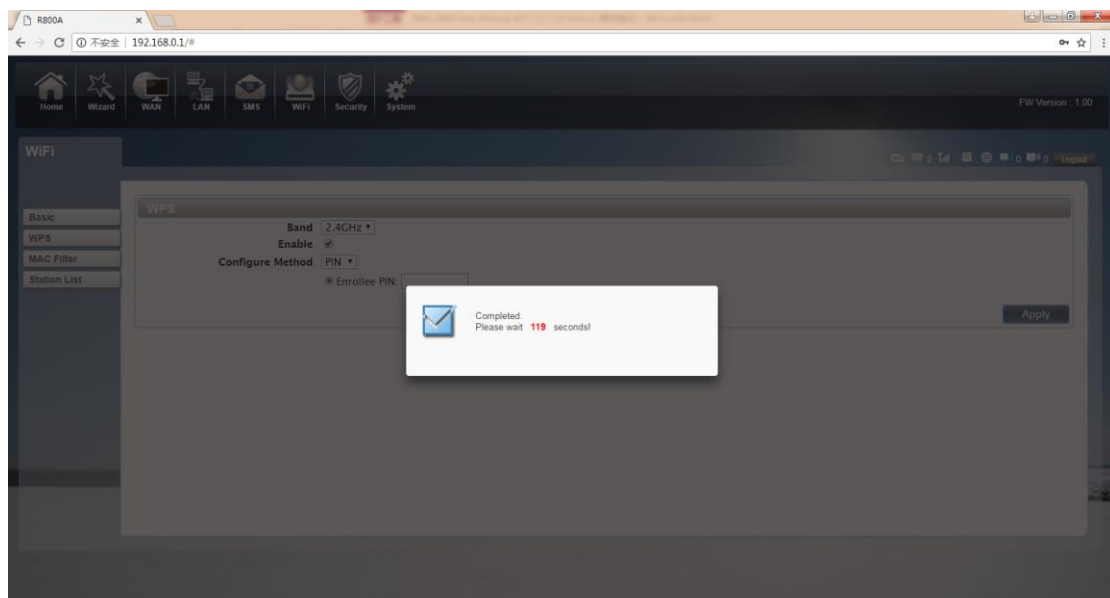
Then you can see like the following picture.



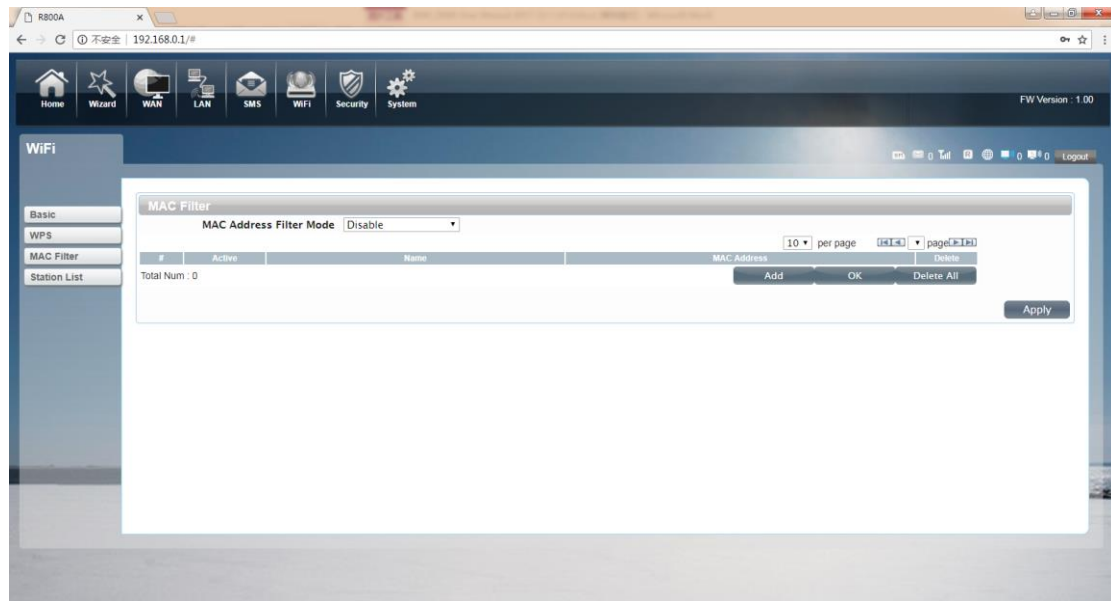


### WPS PIN authentication:

The connection to the R800C is achieved by inputting the relevant PIN key into the enrollee PIN text box, which you may find in the wireless network card. When you applied, it will lasting 120 seconds. The premise is that the wireless network card or the clients must support WPS PIN authentication. Like the following pictures.



### 3. MAC Filter



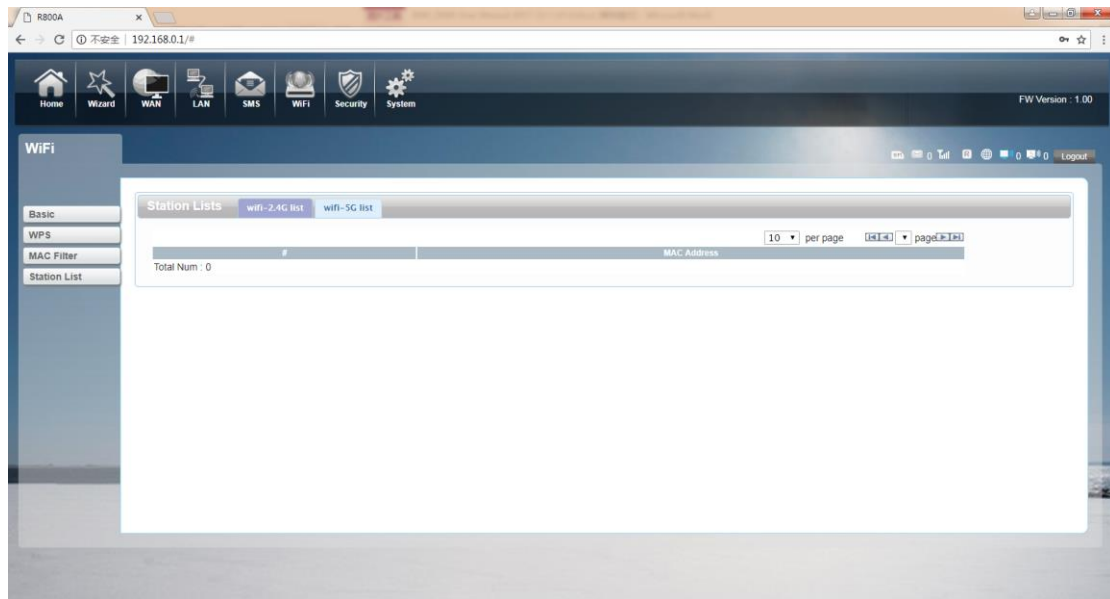
Deny list Stations: If you add the computers or wireless devices MAC address into the list, it can prohibiting the computers or wireless devices connect to the R800C. The computers or wireless devices MAC address which are not in the list can able to connect to R800C.

Allow list Stations: Opposite with Deny list Stations. It only allows the devices in the list to connect to the R800C, other wireless devices are unable to connect to the R800C

Disable: It means close the function of the MAC Address Filter.

### 4. Station List

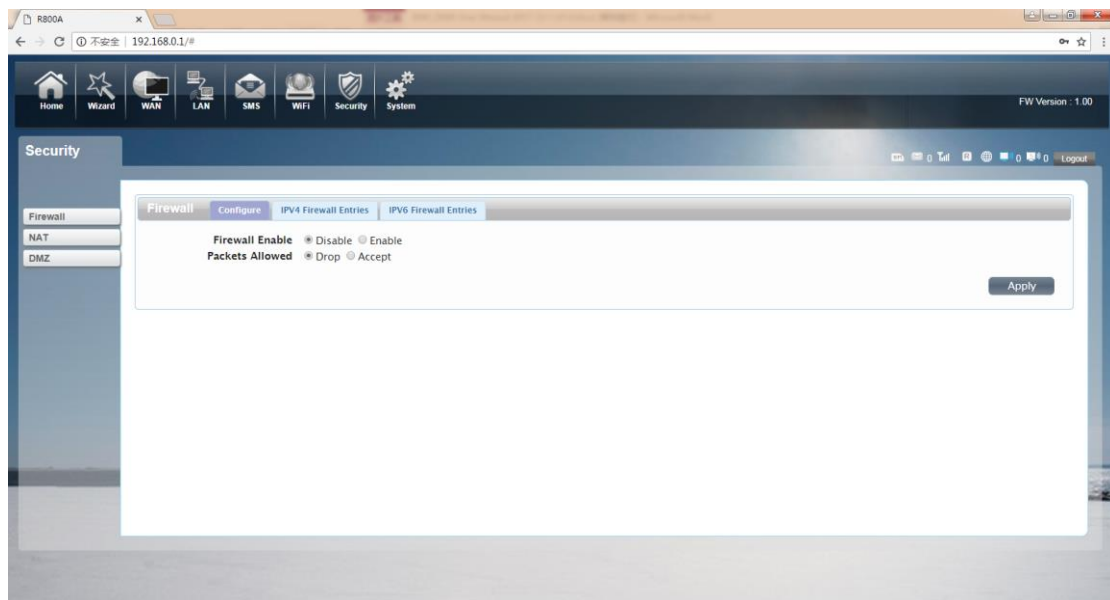




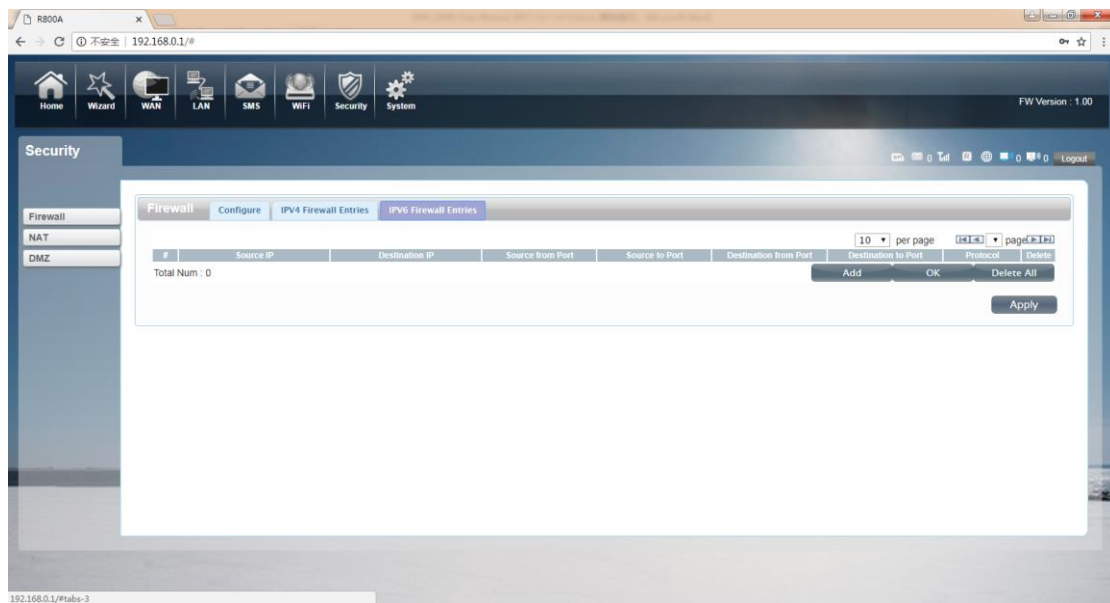
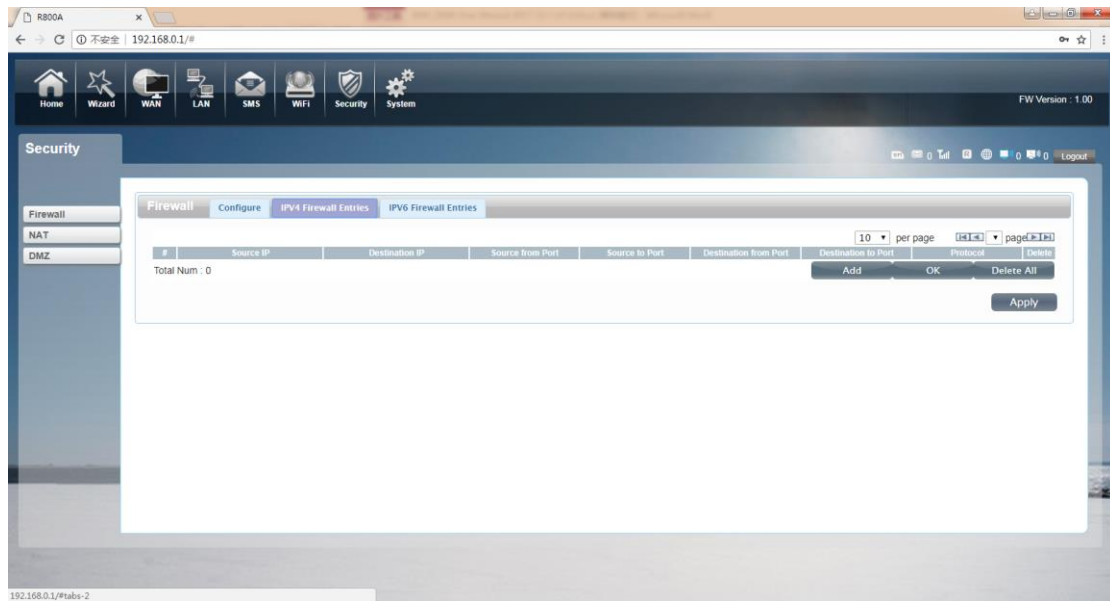
Show the information of wireless devices which are connected to the 2.4GWi-Fi and 5GWi-Fi.

## ●Security

### 1. Firewall



Firewall configuration: You can Disable or Enable the Firewall function. Also you can setting the matching packets rule to receive or reject.

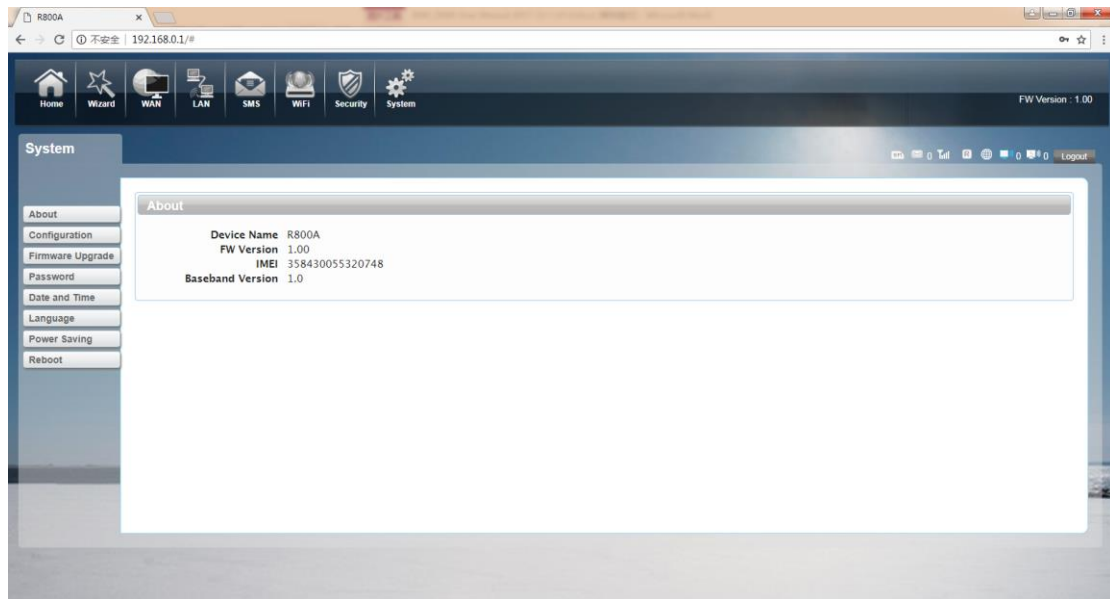


You can add the rule in the list.

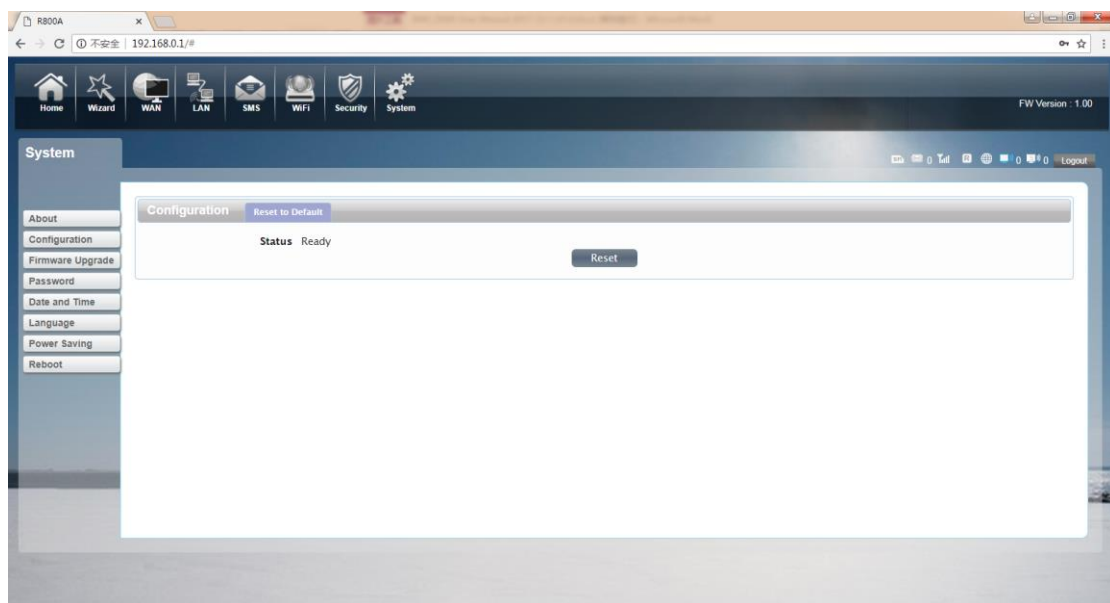
## ●System

### 1. About

R800C displays some basic information, such as device name, firmware version, IMEI, baseband version.

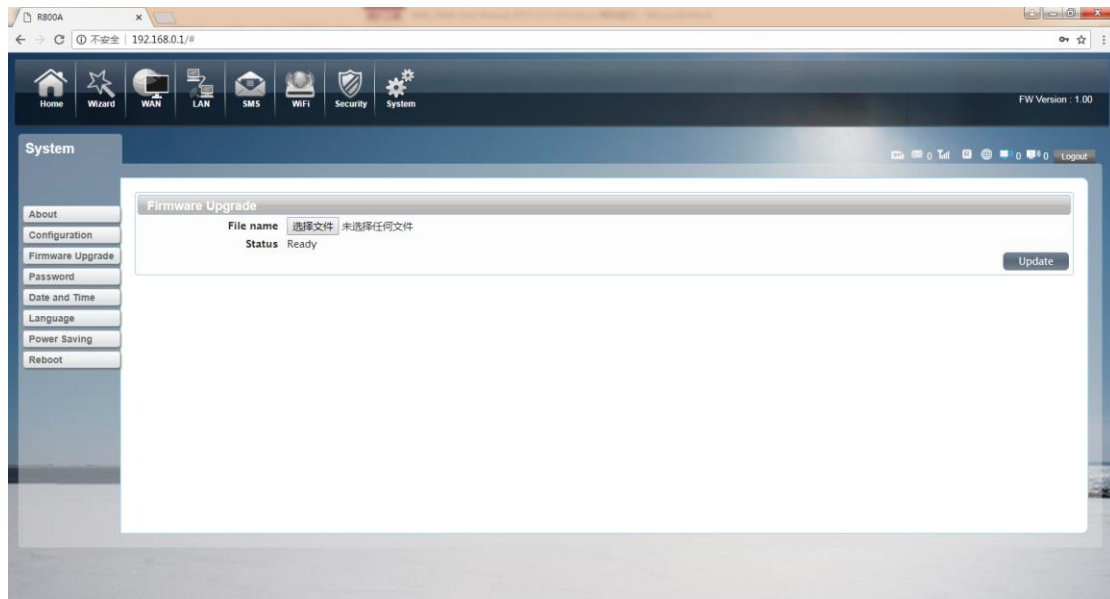


## 2. Configuration



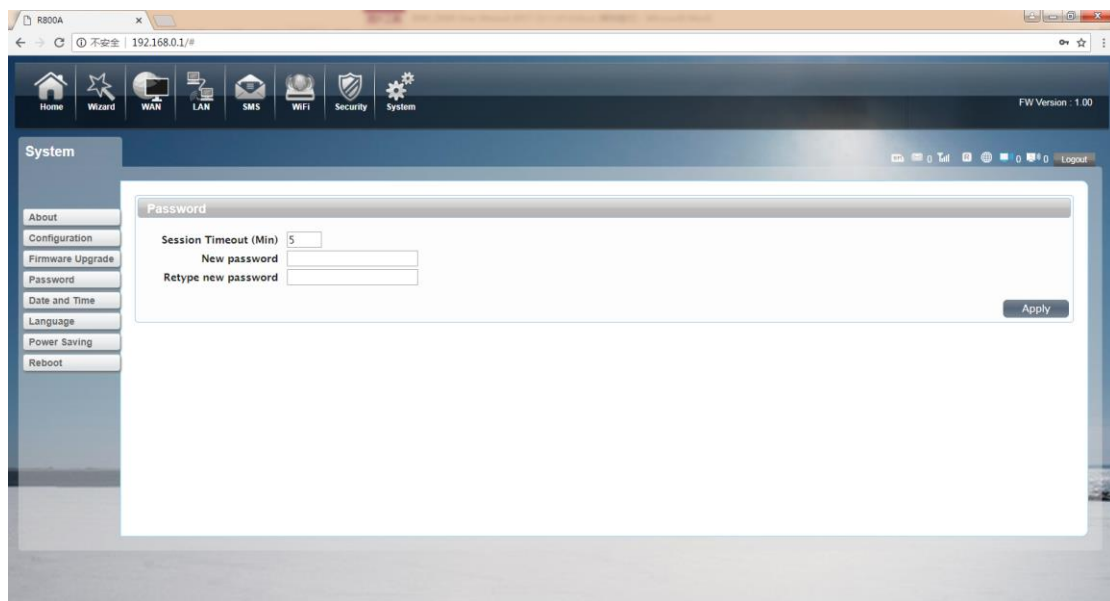
Restore the factory settings, all the personal configuration will be deleted, all configuration pages will be restored to the factory defaults.

## 3. Firmware Upgrade



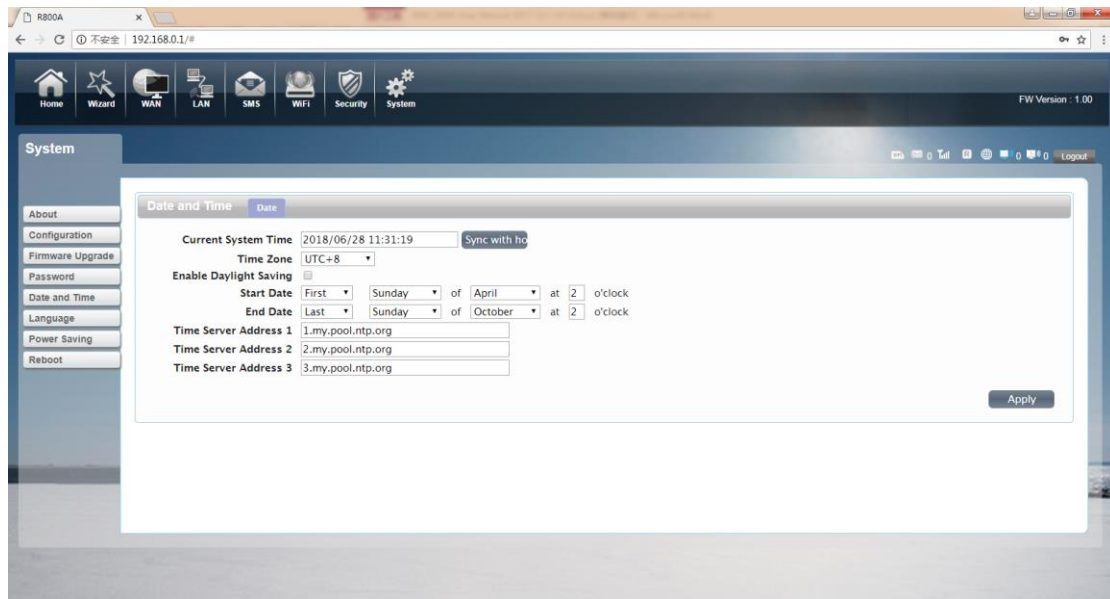
Select the file to update the software

## 4. Password



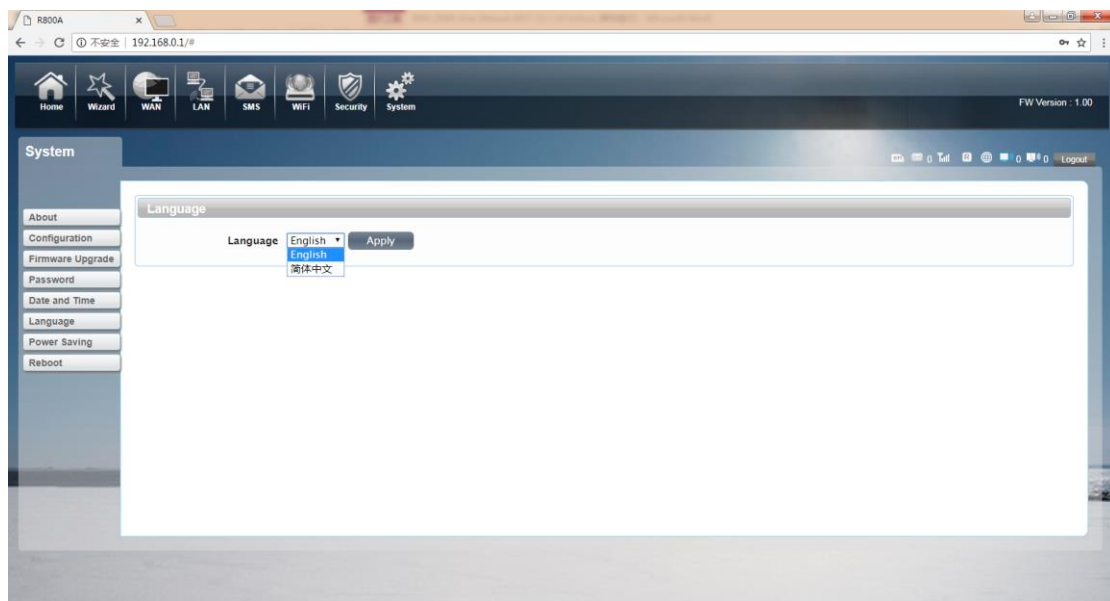
Modify the login password for administrator interface. Also you can setting the time to logout the automatically.

## 5. Date and Time



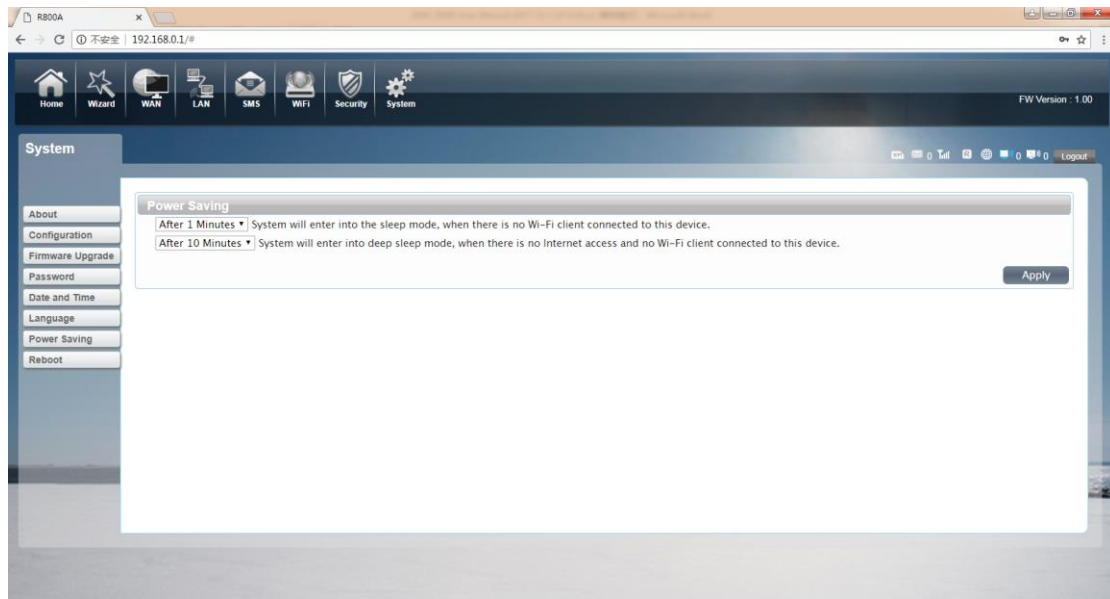
You can synchronize the time with the host, you can also select the time zone

## 6. Language



You can change the UI language in this page.

## 7. Power saving

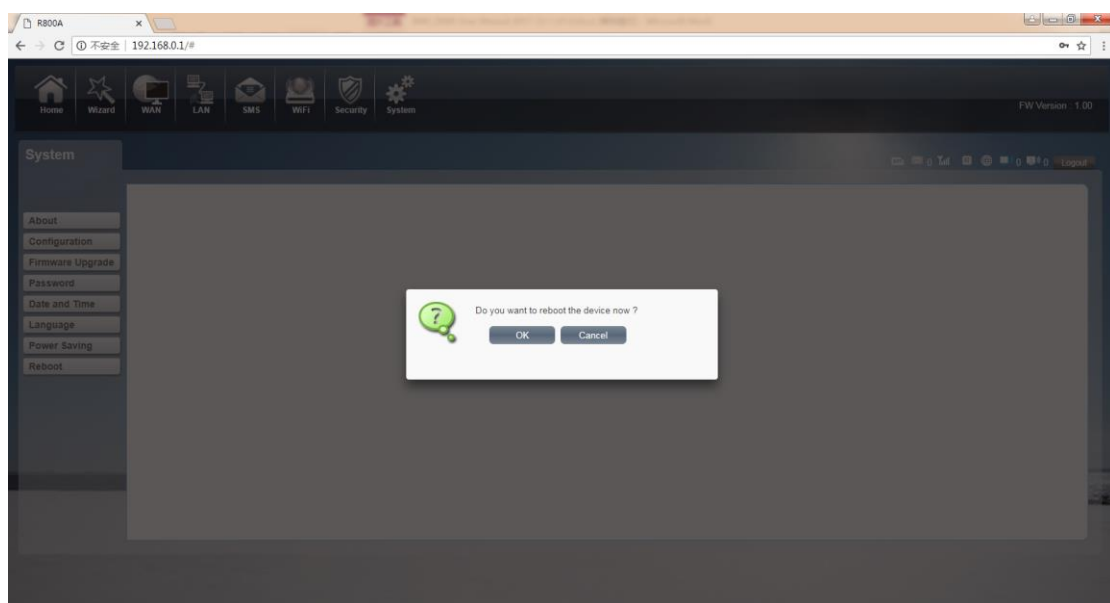


You can change the time of sleep mode or deep sleep mode. In this page you also can disable the Power saving function.

Sleep mode: System will enter into the sleep mode, when there is no Wi-Fi client connected to this device.

Deep sleep mode: System will enter into deep sleep mode, when there is no Internet access and no Wi-Fi client connected to this device.

## 8. Reboot



# Safety Warning

---

**Caution: RISK OF EXPLOSION IF BATTERY IS REPLACED BY AN INCORRECT TYPE. DISPOSE OF USED BATTERIES ACCORDING TO THE INSTRUCTIONS**

**FCC Warning:**

This equipment has been tested and found to comply with the limits for a Class B digital device, pursuant to part 15 of the FCC Rules. These limits are designed to provide reasonable protection against harmful interference in a residential installation. This equipment generates, uses and can radiate radio frequency energy and, if not installed and used in accordance with the instructions, may cause harmful interference to radio communications. However, there is no guarantee that interference will not occur in a particular installation. If this equipment does cause harmful interference to radio or television reception, which can be determined by turning the equipment off and on, the user is encouraged to try to correct the interference by one or more of the following measures:

- Reorient or relocate the receiving antenna.
- Increase the separation between the equipment and receiver.
- Connect the equipment into an outlet on a circuit different from that to which the receiver is connected.
- Consult the dealer or an experienced radio/TV technician for help.

Caution: Any changes or modifications to this device not explicitly approved by manufacturer could void your authority to operate this equipment.

This device complies with part 15 of the FCC Rules. Operation is subject to the following two conditions: (1) This device may not cause harmful interference, and (2) this device must accept any interference received, including interference that may cause undesired operation.



**Specific Absorption Rate (SAR) information:**

This equipment meets the government's requirements for exposure to radio waves. The guidelines are based on standards that were developed by independent scientific organizations through periodic and thorough evaluation of scientific studies. The standards include a substantial safety margin designed to assure the safety of all persons regardless of age or health. FCC RF Exposure Information and Statement the SAR limit of USA (FCC) is 1.199 W/kg averaged over one gram of tissue. Device types: equipment (FCC ID: 2AON8R800C) has also been tested against this SAR limit. This device was tested for typical body-worn operations with the back of the equipment kept 10mm from the body. To maintain compliance with FCC RF exposure requirements, use accessories that maintain a 10mm separation distance between the user's body and the back of the equipment. The use of belt clips, holsters and similar accessories should not contain metallic components in its assembly. The use of accessories that do not satisfy these requirements may not comply with FCC RF exposure requirements, and should be avoided.

This device is restricted to indoor use where operated in the European and USA/Canada Community using frequency in 5150MHz ~ 5250MHz to reduce the potential for interference.