

BMC R708A User Manual

Interface



key	Illustrate
Power key	Long press over 5 seconds to power on and long press to power off
WPS	Press to active the WPS
Reset	The Reset button is on the opposite side of the machine. If you forget Administrator password or Wireless network key, you can press the Reset key to restore factory default settings.

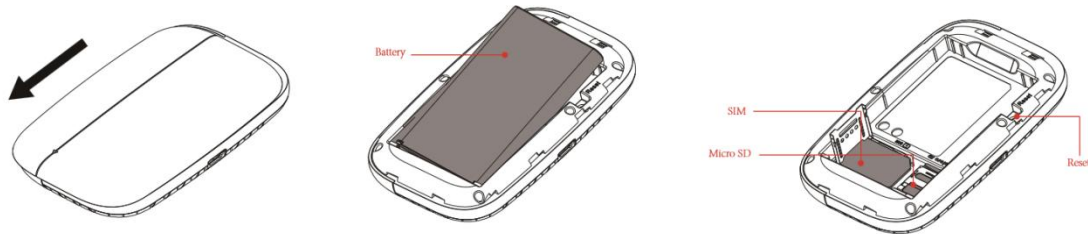
LED Indication

Indicator	Color	Working Status	
Power LED	Green	Solid:booting up the device	Blink: Turn on-0.5s Turn off-0.5s
	Amber	Blink:Charging	
	Blue	Solid:Battery High(100%-60%) or Charge Completed	
	Amber	Solid:Battery Middle(60%-15%)	
Red	Solid: Battery too low nearly shutdown(< 15%)		
SMS LED	Blue	Blink:NewSMS	
Signal LED	Blue	Solid: Register to LTE(not connect) Blink: Connected toLTE network	
	Green	Solid: Register to 3G(not connect) Blink: Connected to3G network	
	Purple	Solid: Register to2G(not connect)	

		Blink: Connected to 2G network	
	Red	Solid: No Service/Device Error	
WiFi LED	Blue	Solid: No Client	Blink: Turn on-0.2s Turn off-0.1s
		Blink: Client is activated	
		Blink: WPS is activated	

Installation

Follow the diagram to install the SIM card and SD card



Tips: Always switch the device off and disconnect the charger before removing the battery.

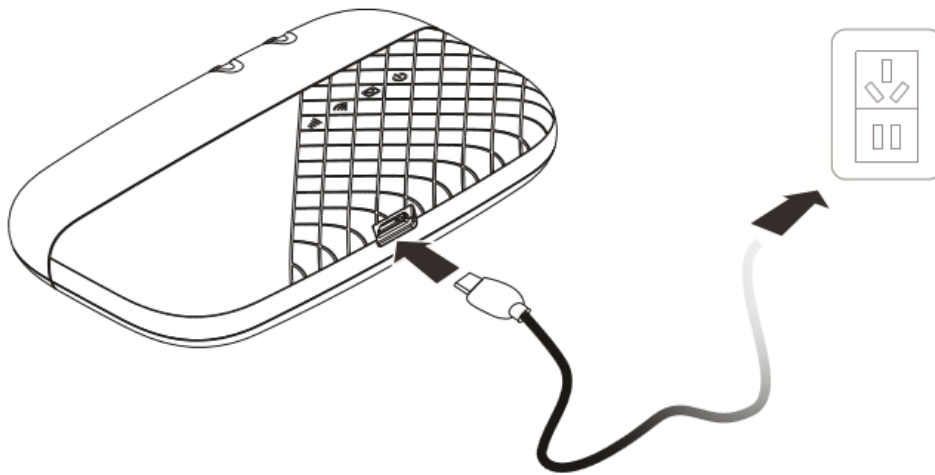
1. Remove the back cover and battery;
2. Insert the SIM card and SD card. Ensure that the contact area on the card is facing down and that the beveled corner on the card is facing the beveled corner on the holder.
3. Align the battery contacts with the battery compartment connectors, and insert the battery. Replace the back cover lastly.

Charge

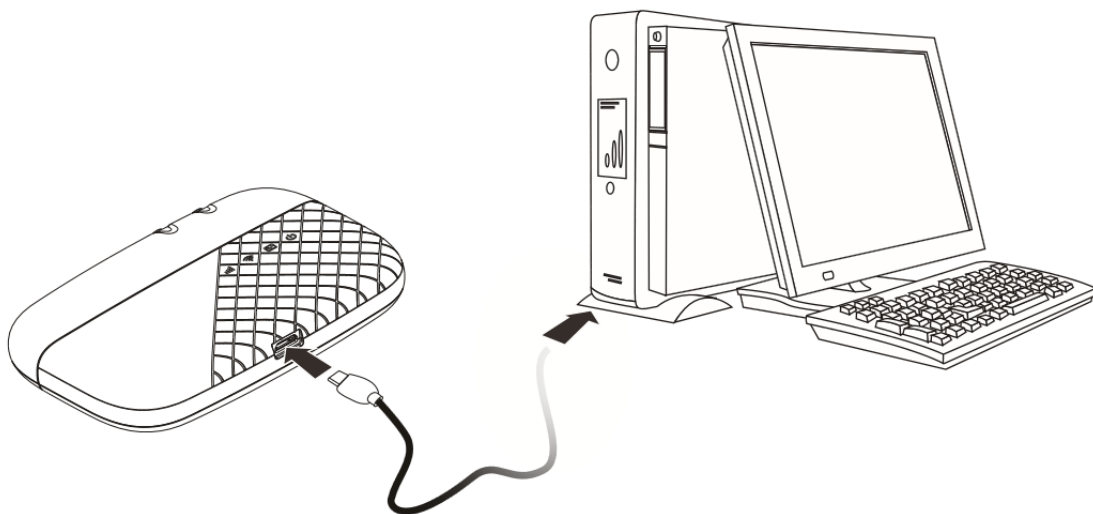
Your battery has been partially charged at the factory. If the device indicates a low charge, do the following:

1. Connect the charger to an outlet.
2. Connect the USB charger plug to your device' s USB port.
3. When the device indicates a full charge, disconnect the charger from the device, then from the outlet.

One : Using charge adapter



Two : Using USB port

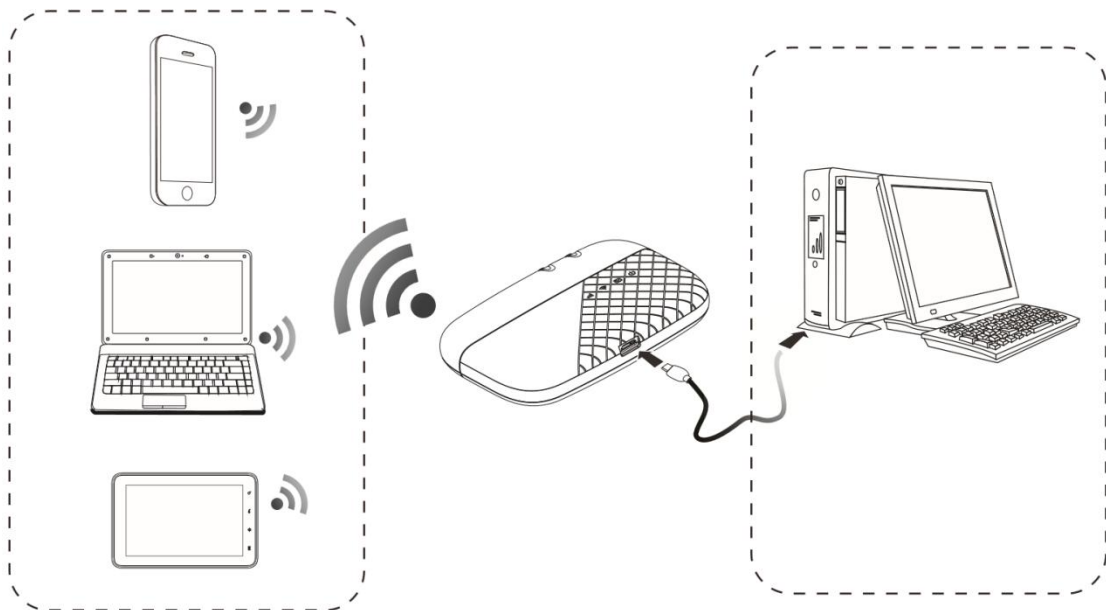


BMC R708A Usage

R708A support 4G/3G networks. Insert the SIM card, Wi-Fi devices and the computer can access the Internet through R708A, enjoy high-speed network services. Smart phones, tablet computers, game consoles and other Wi-Fi devices can be connected with the R708A Wi-Fi connection for Internet access.

Computers & laptops etc. may be connected to the R708A via USB cable for Internet Access.

R708A connects computer for the first time via a USB connection, you need to follow the prompts to install the driver



Wi-Fi wireless Internet access

In order for a WiFi device to establish a connection with the R708A for the first time, you will need to select the R708A SSID (WiFi name) & enter the relevant WiFi password, which you may find in the following ways:

Method one: on the nameplate view the default SSID and Wi-Fi passwords

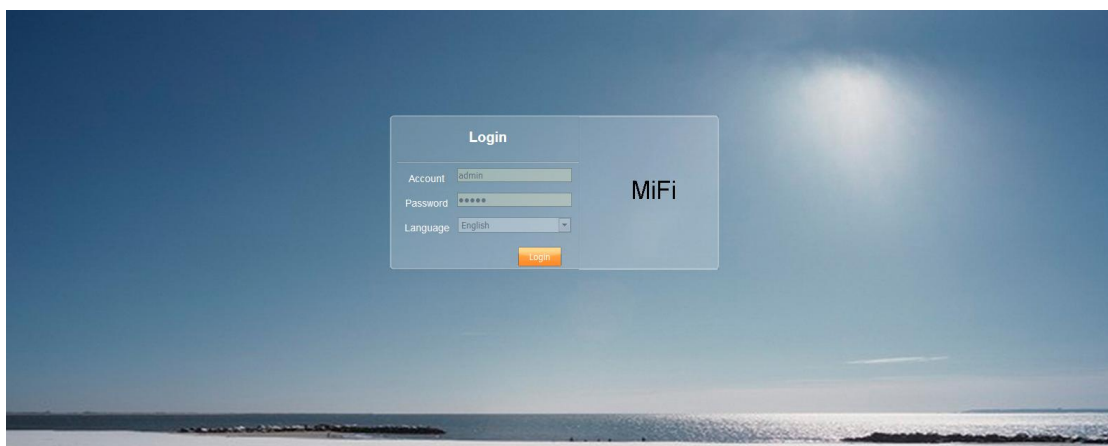


Method Two: Login management page view

1.Computer, open your browser, input <http://192.168.0.1> and enter.

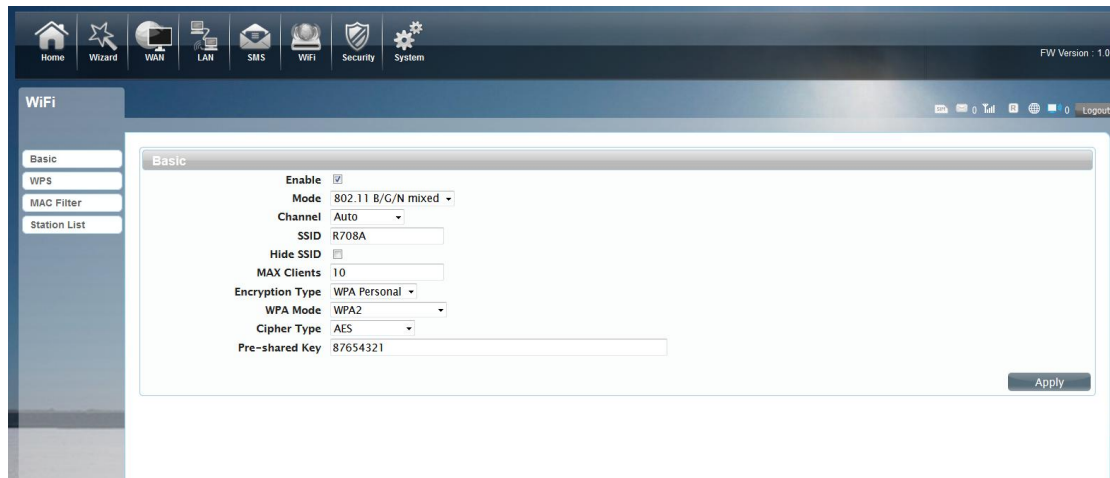
- The default Account is admin
- The default Password is admin

Enter the Account and Password, login the administration pages



2.Enter the Wi-Fi menu, view the default SSID and Wi-Fi password

- The default SSID is R708A
- The default Wi-Fi Password is 87654321

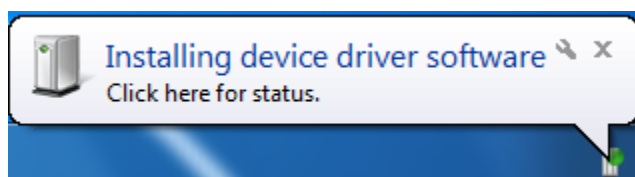


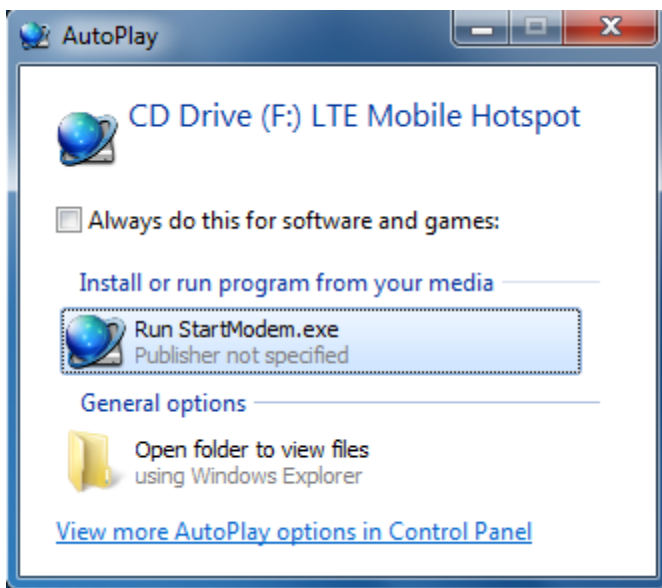
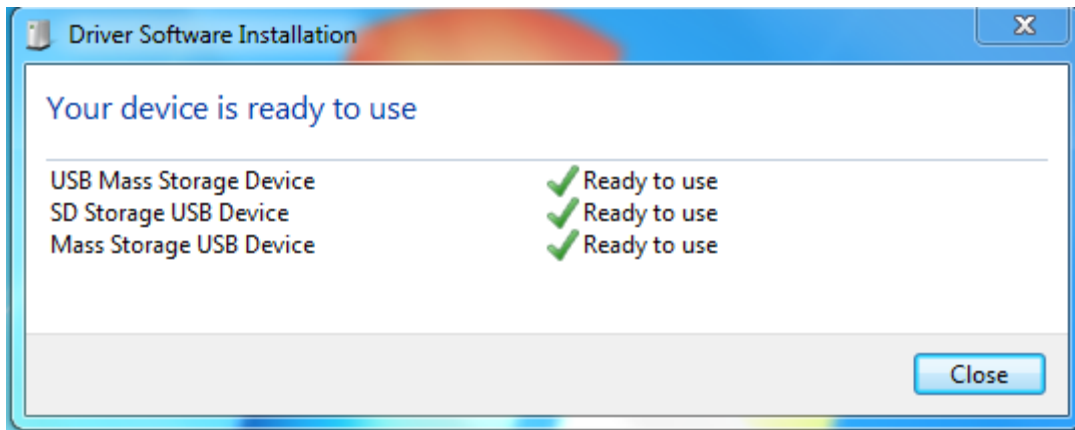
★Recommend that you start using R708A administration pages after setting a convenient landing memorizing SSID and a higher safety factor Wi-Fi passwords


Install the driver and connecting the device

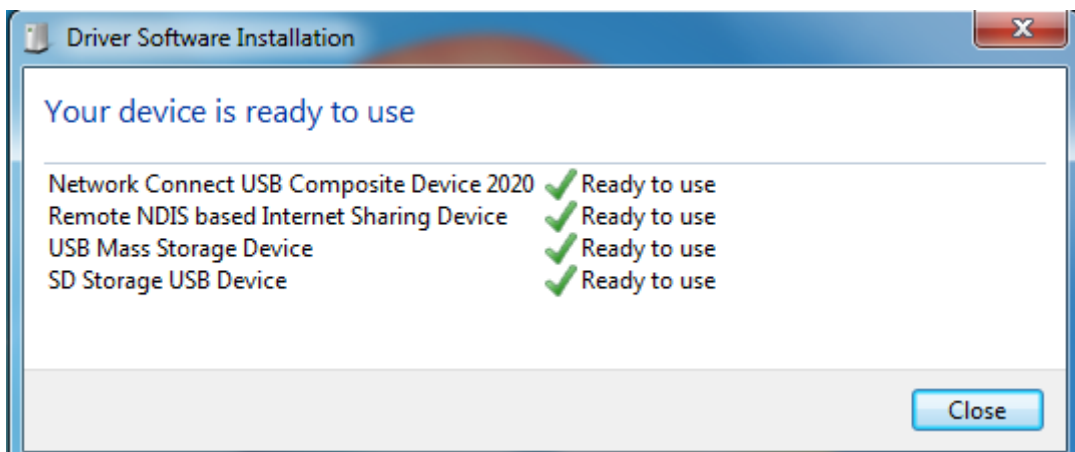
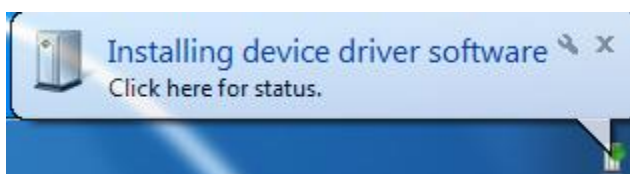
USB Connection:Windows 7 for example

1. Keep R708A powering on,Plug the device into your computer,it will shows like the following pictures step by step.

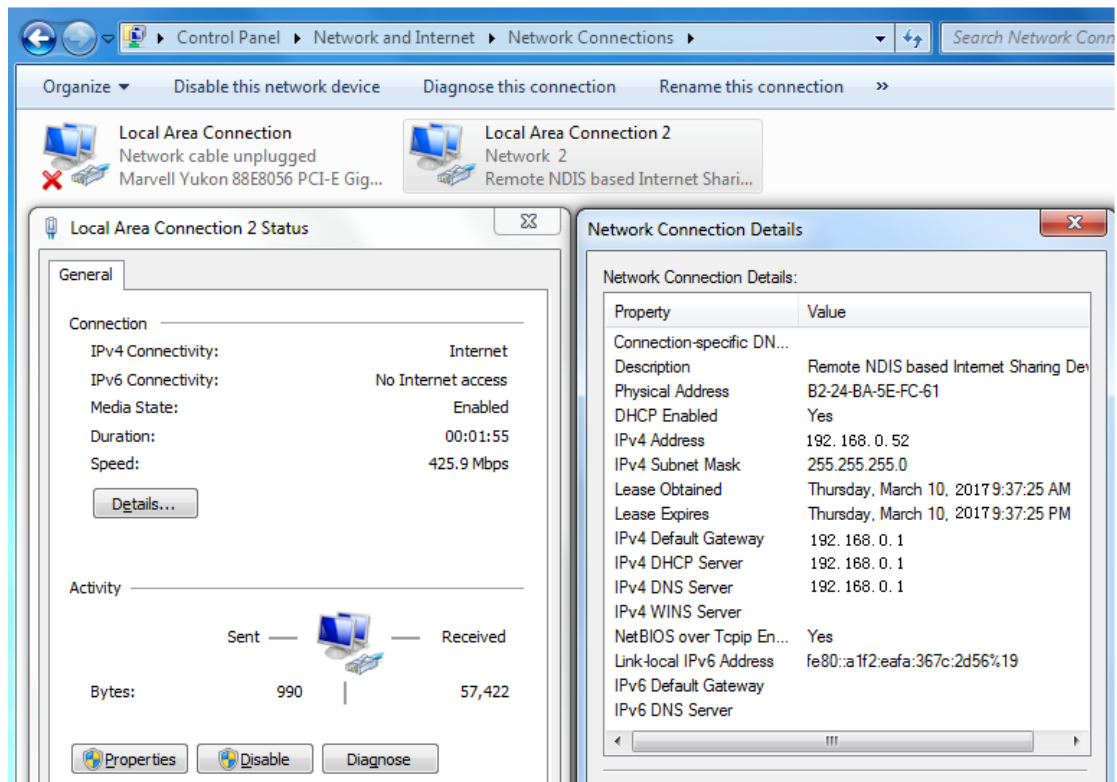




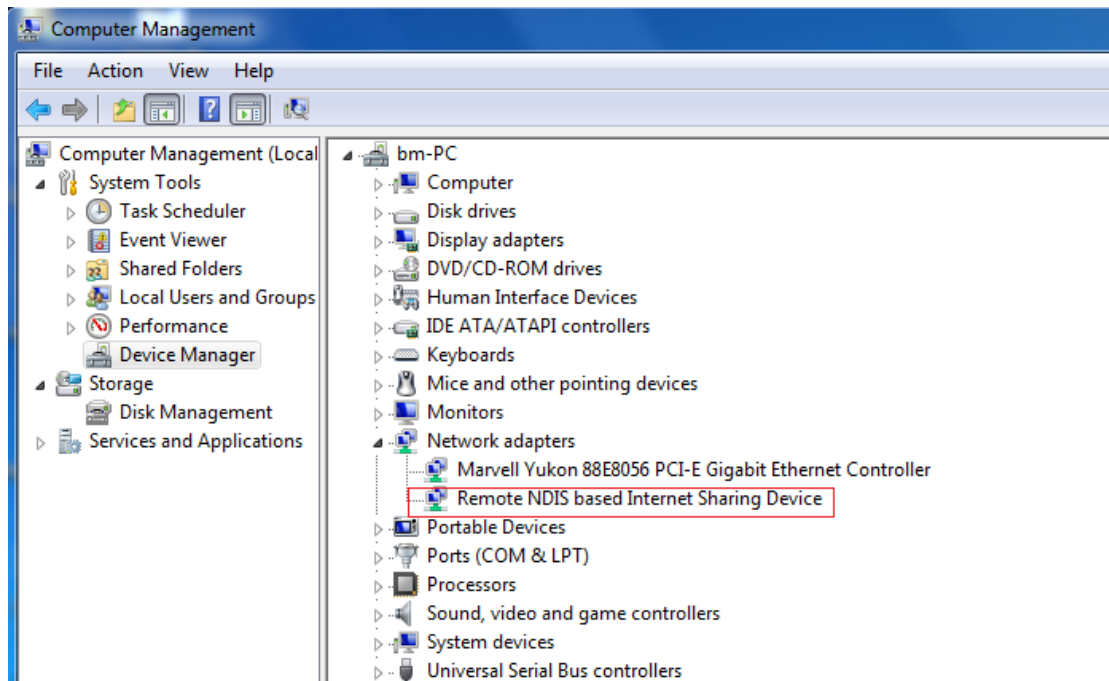
2. Double-click the  Run StartModem.exe, wait for the installation to complete



3. Check the network card is installed correctly, like the following pictures



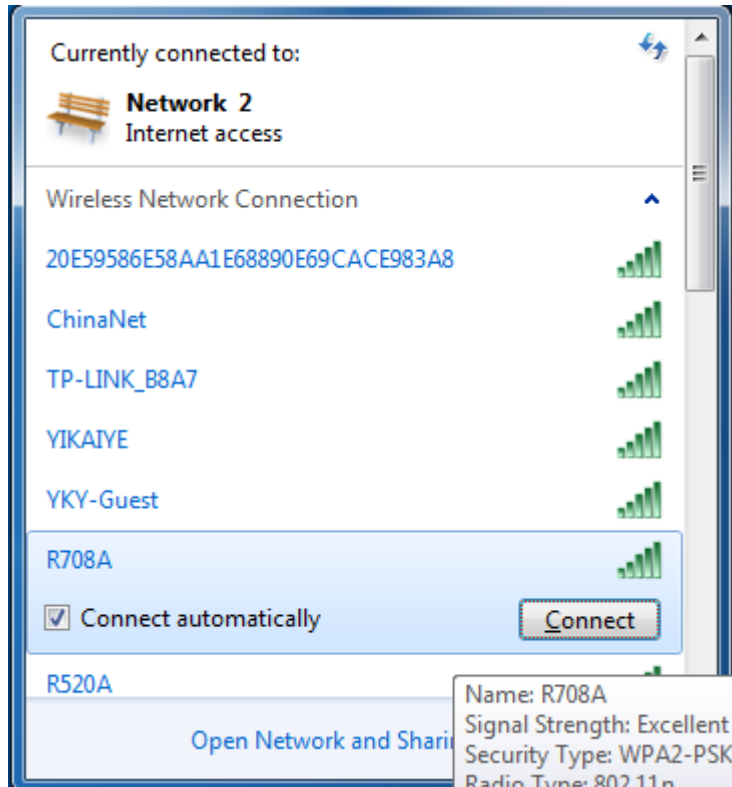
Or,



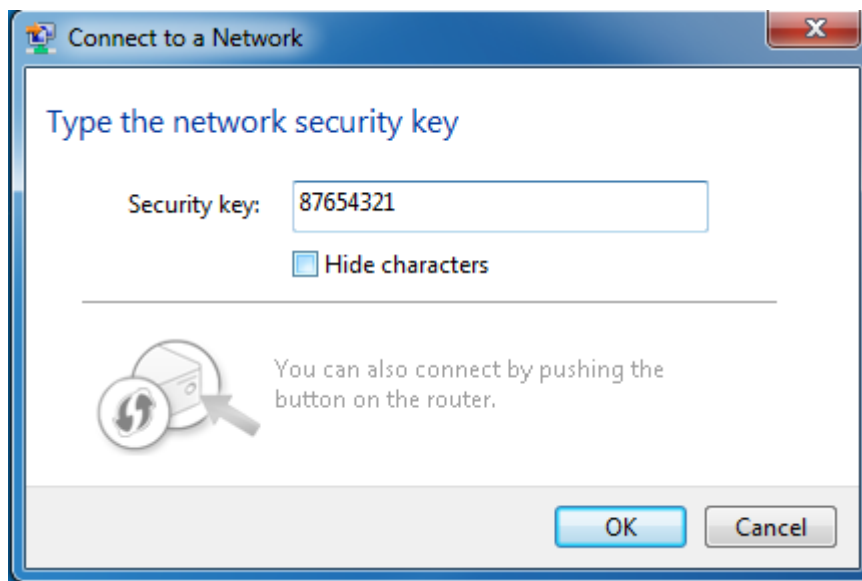
Establish Wi-Fi connection: you must ensure that the computer is equipped with a wireless network card. If the computer showed the presence of Wi-Fi

connectivity, the wireless LAN is available. Otherwise, you need to check your wireless network card is working properly.

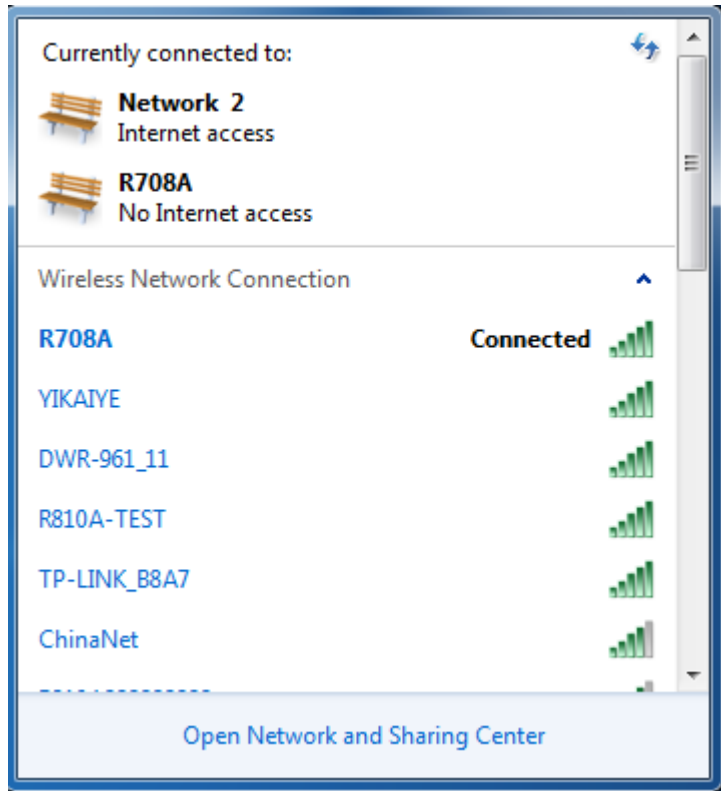
1. In the Wi-Fi list, select the SSID consistent with R708A Wi-Fi, click Connect



2. Enter the correct Wi-Fi password, click OK

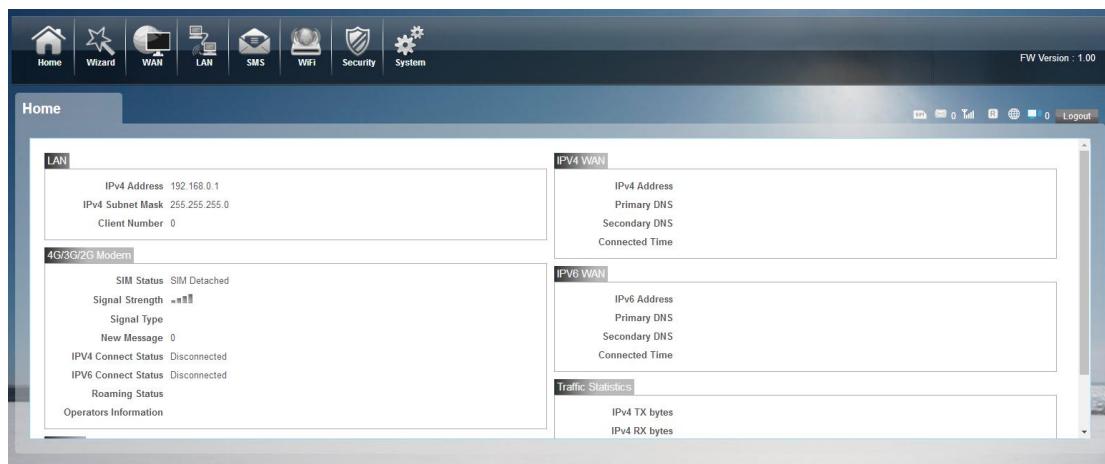


3. Wait a moment, Wi-Fi connection is displayed next to the name, Wi-Fi connection is successful



WebUI

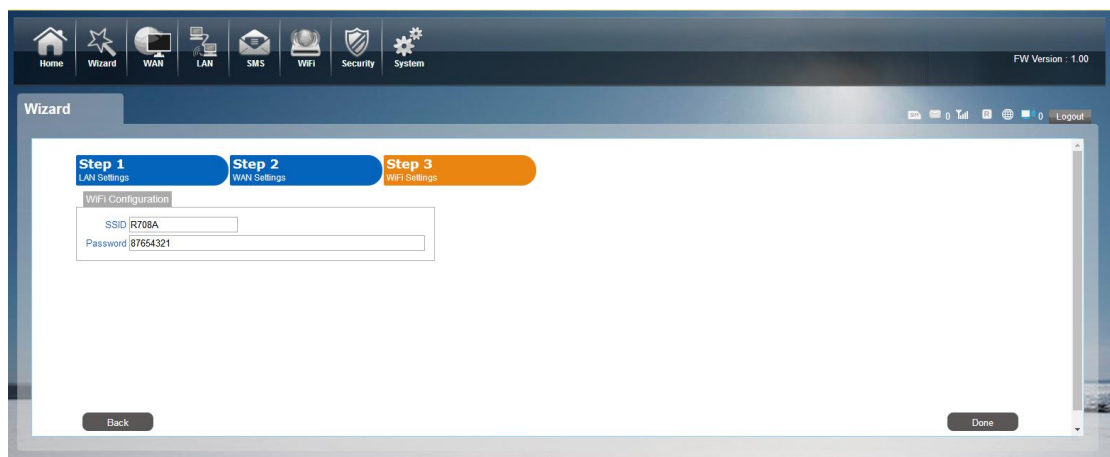
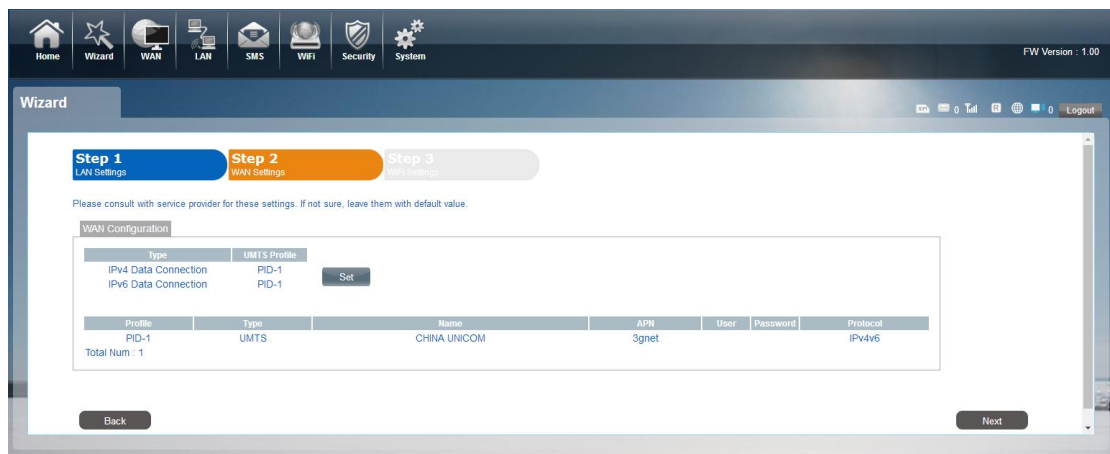
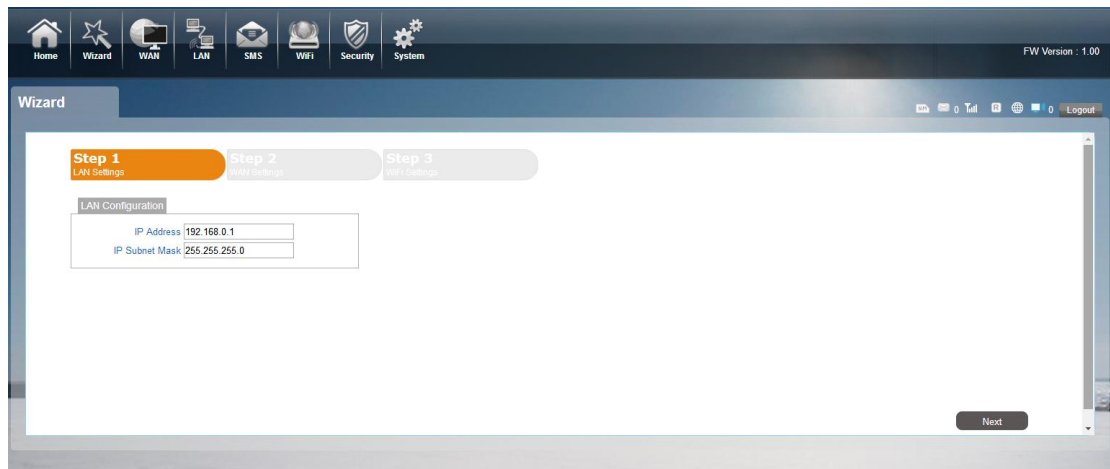
●Home



First part of the main display settings and network status information, such as IP address, SIM card status, type and quality of the network signal, whether it is roaming, with or without a new message, and traffic statistics, and system

uptime, and so on.

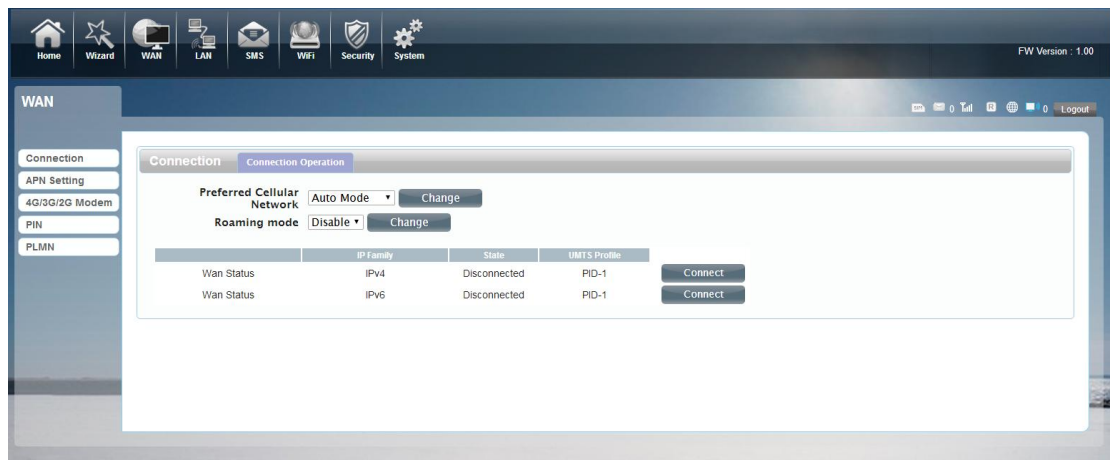
- Wizard



You can quickly change the LAN configuration, set the APN, and change the SSID \ password through the wizard function.

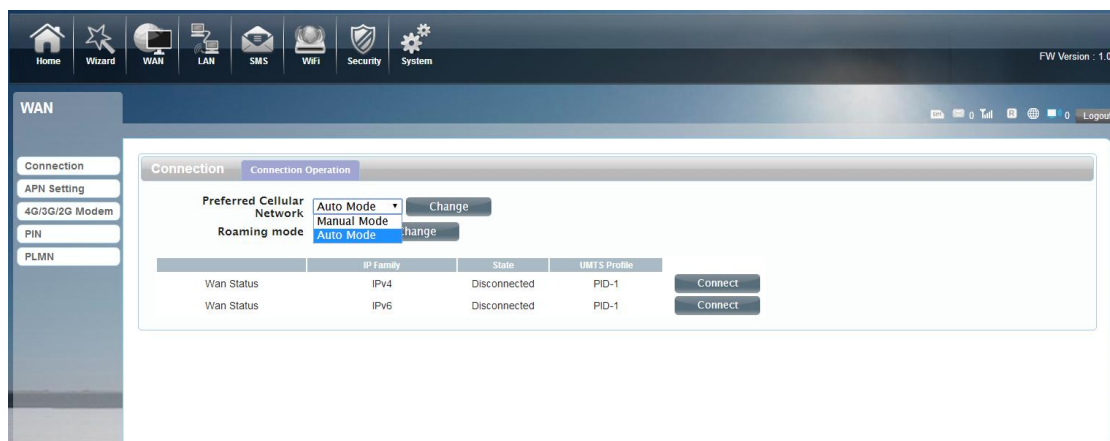
●WAN

1.Connection

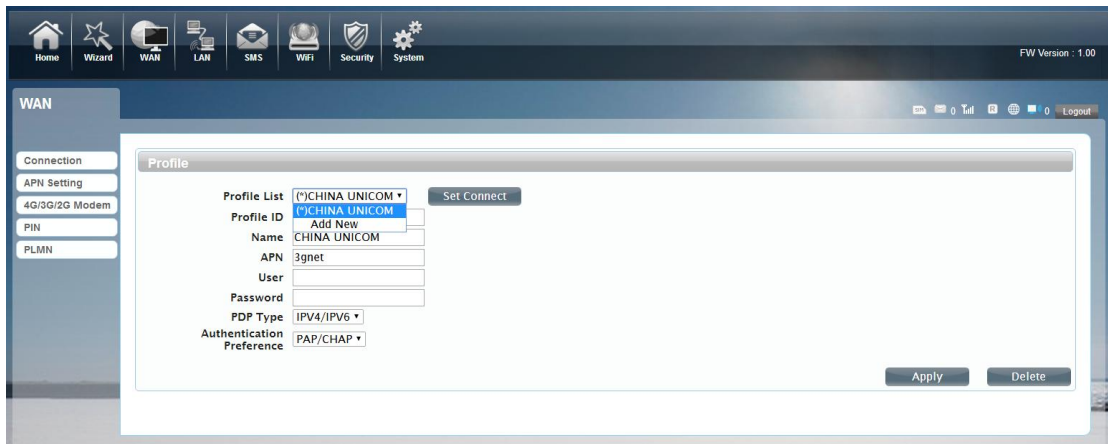


Dialing Mode:

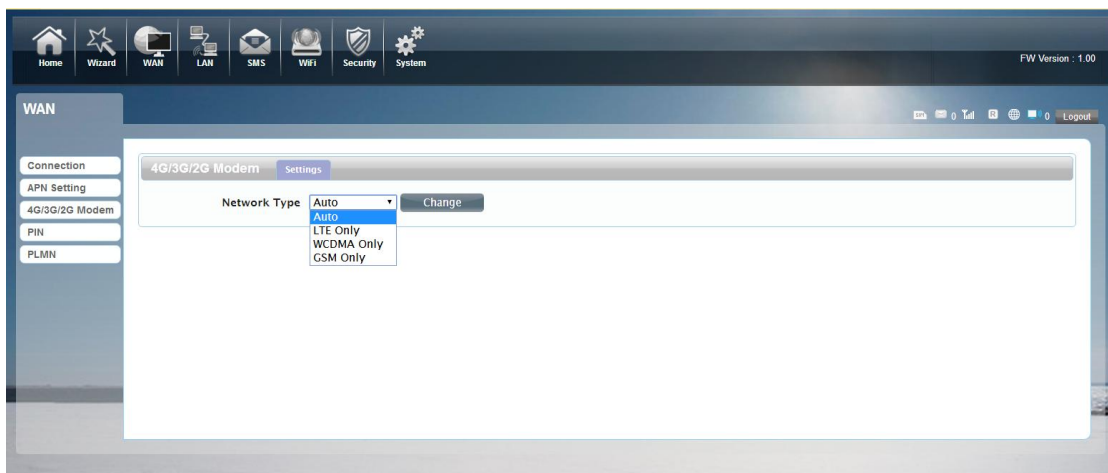
Select the Auto Mode, after you turn on R708A without additional operations, the device will automatically connect to the network; select the Manual Mode, you need to manually connect to the network after opening the R708A management page.



2.APN Setting: You can customize the network configuration or manually add the new APN and set default APN.

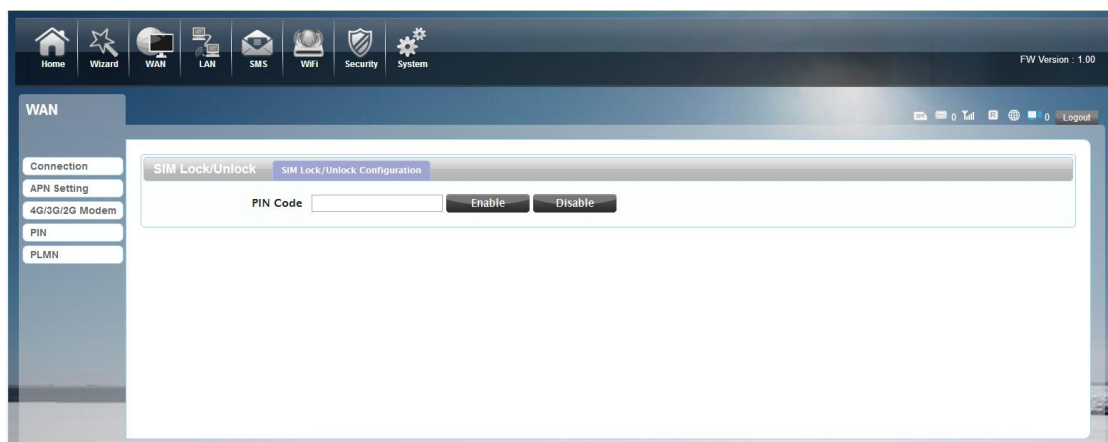


3.4G/3G Modem



There are four types of networks can be choose: Auto is 4G/3G, LTE Only is using only 4G, WCDMA Only is using only 3G.

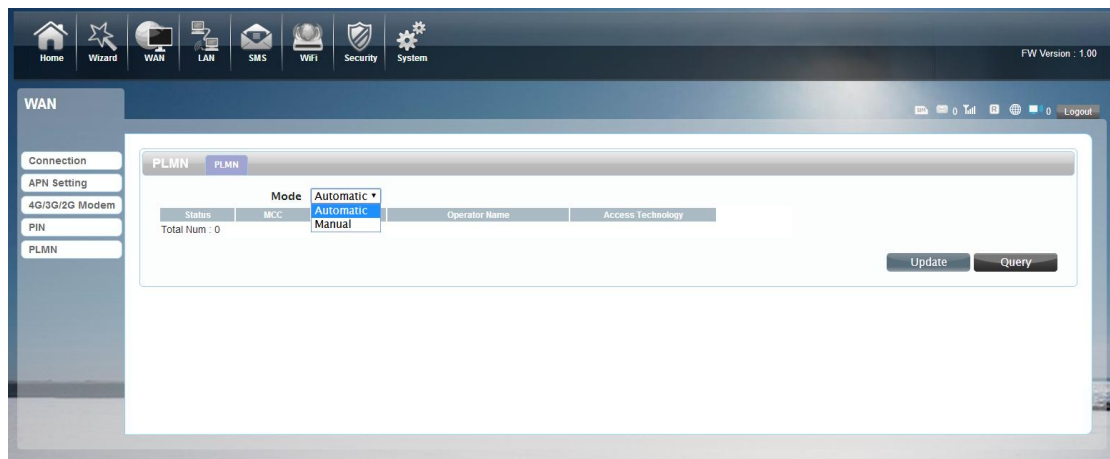
4.PIN



Open your PIN, if you reboot the device, you need to login management page, and

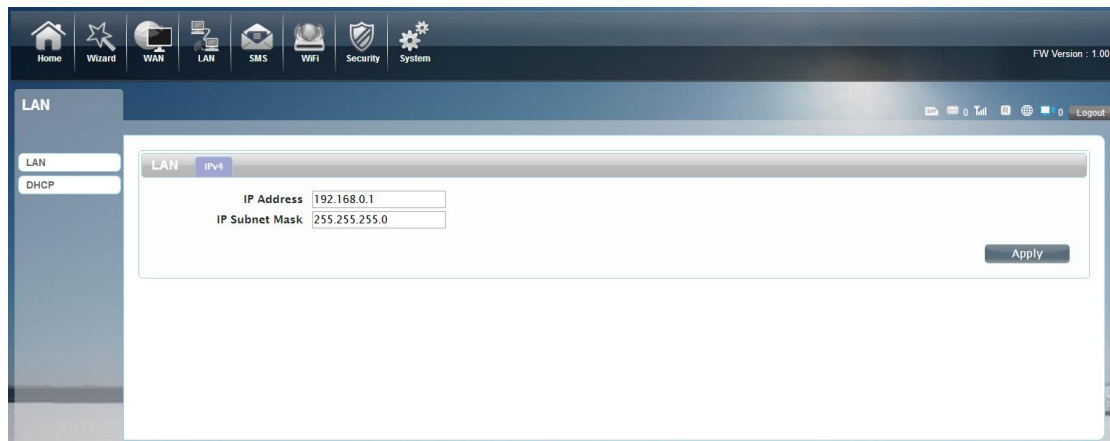
the page will prompted to enter the correct PIN code, you can use the SIM card. PIN / PUK code supplied with the SIM card provided by your carrier, please consult your carrier.

4. PLMN



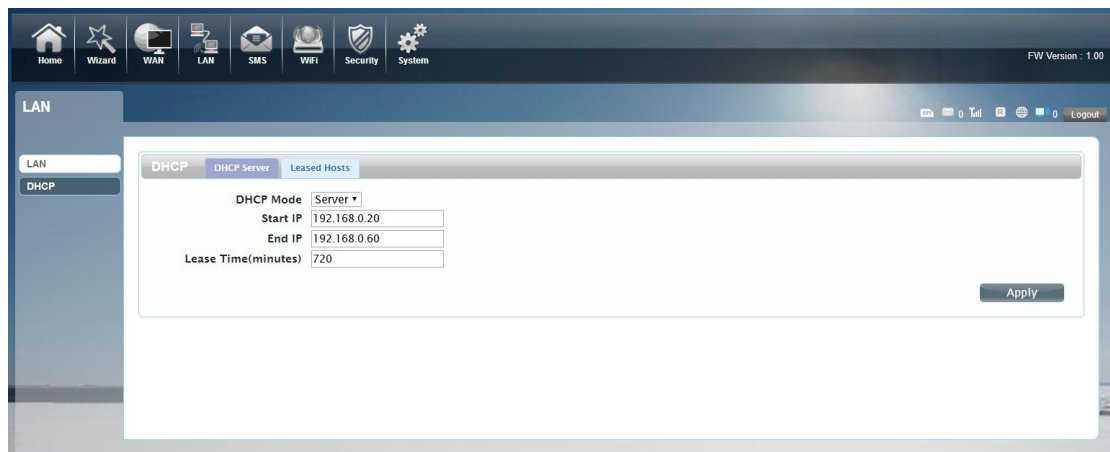
Public Land Mobile Network have two mode, one is automatic, the other is manual. You can search the current network manually and register.

1.LAN



We can change IP address in this page.

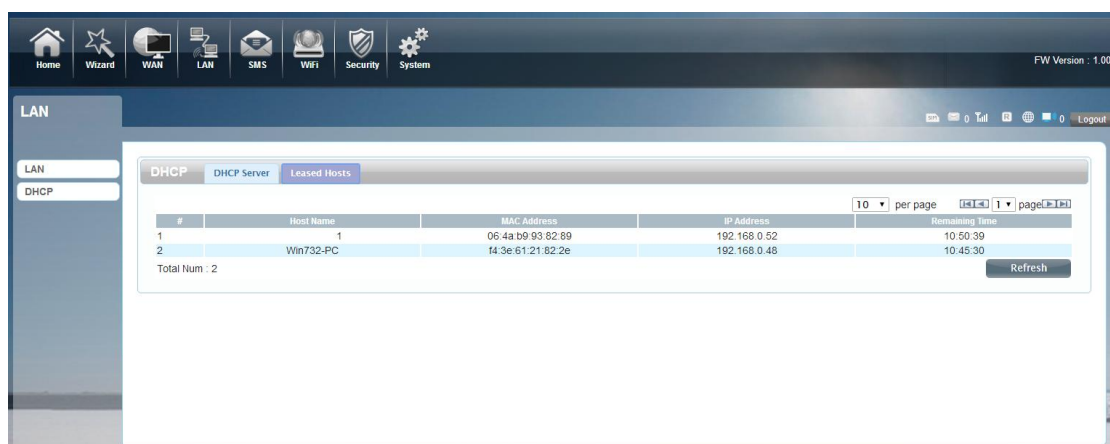
2.DHCP



DHCP Mode: Select the server mode, the device can be done using a DHCP server; choose None, which is off the server function.

Start / End IP address: Changing DHCP assigned IP and IP segments.

Lease Time: Each is assigned a time to use the IP

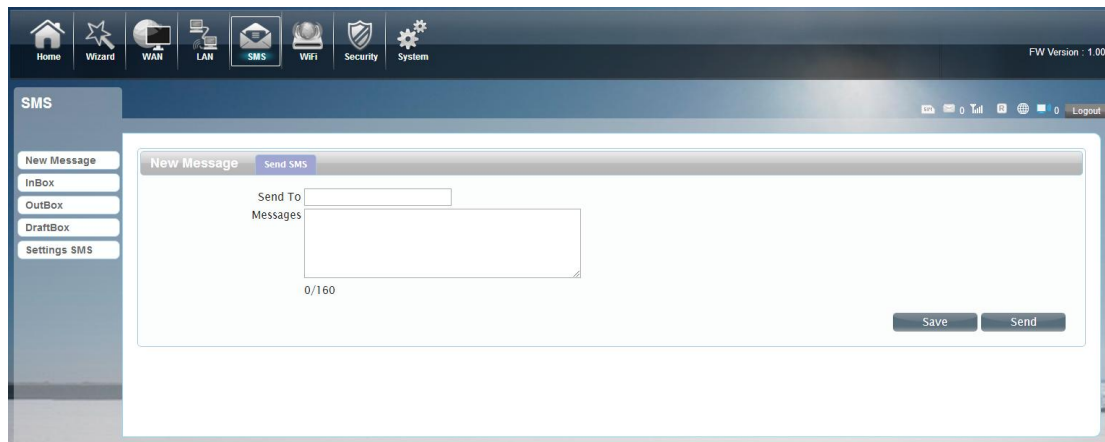


LeasedHosts: the R708A each wireless device list and USB device can view the Host name, MAC Address, IP Address, information about the Remaining Time.

●SMS

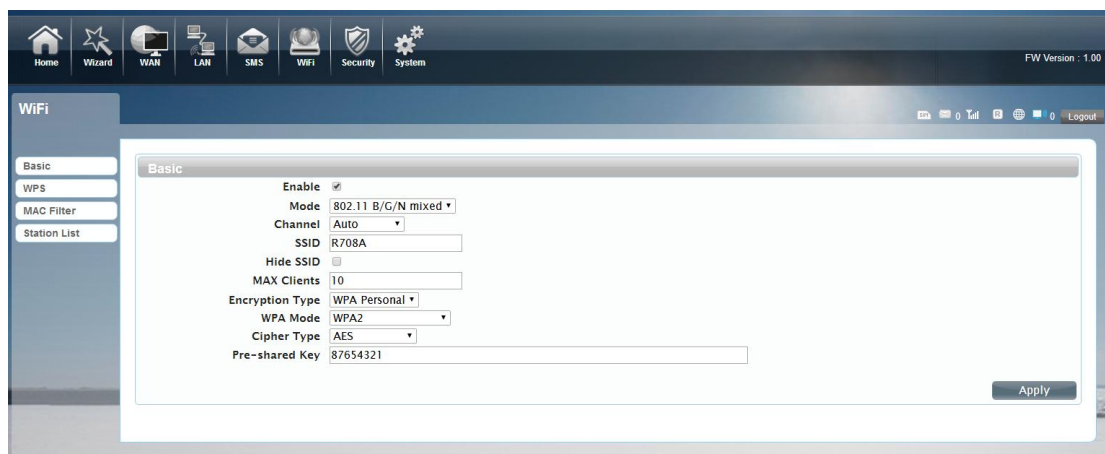
When using SIM card to access network, you could also send text messages at the time. You can send, receive, reply, forward, and save test messages. You can send 10 text messages at the same time, SMS number intervals with a semicolon. Also

you can setting the storage location of messages, and so on. We can operating the SMS in this page.



●Wi-Fi

1.Basic

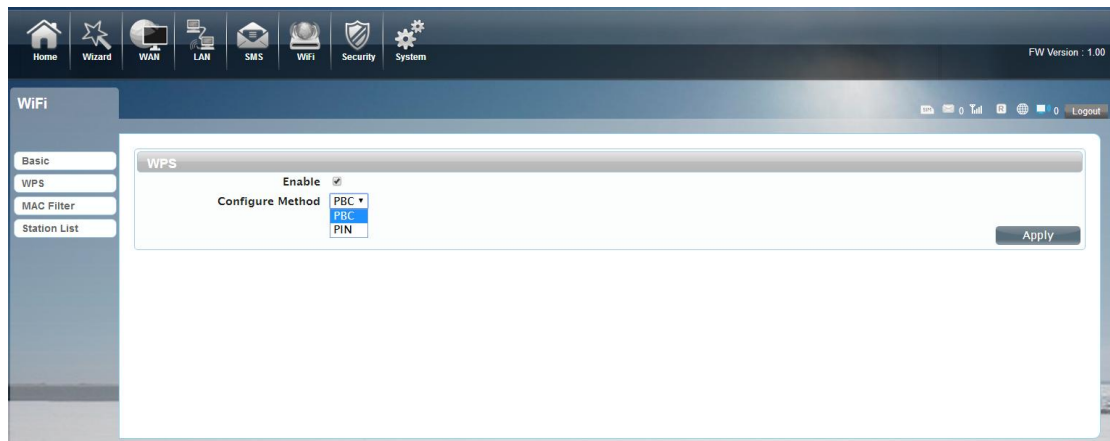


We can setting the wifi configuration in this page, like B/G/N mode, Channel, SSID,WIFI KEY and so on.

2.WPS

R708A supports two kinds of WPS authentication, PBC and PIN. Default is PBC authentication.

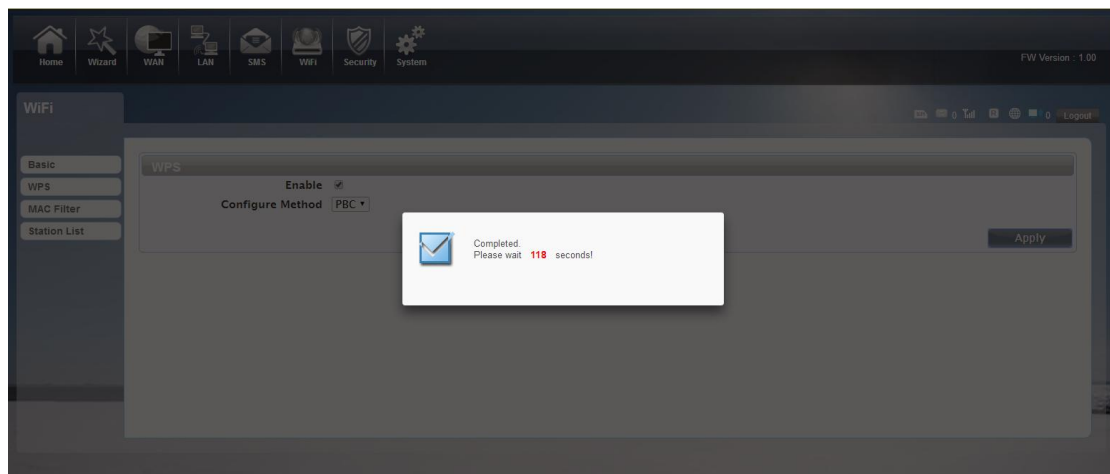
WPS PBC authentication:



If your WiFi Enabled ,device supports WPS (WiFi Protected Setup) and you have forgotten or do not wish to enter your password to connect to your R708A, you may use the following available procedures for quick access to WiFi.

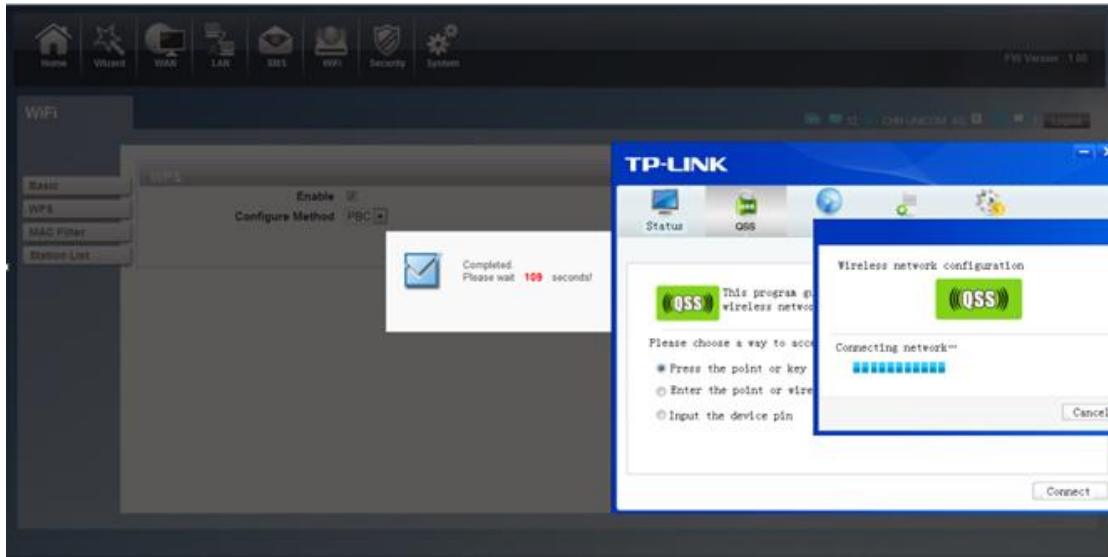
Open the WPS:

WPS can be opened by two methods. The first method is , Entering the management interface page, press the "Apply " button , open the WPS. It will last 120 seconds. Like the following picture.



Using WPS to connecting the R708A (Computer for example):

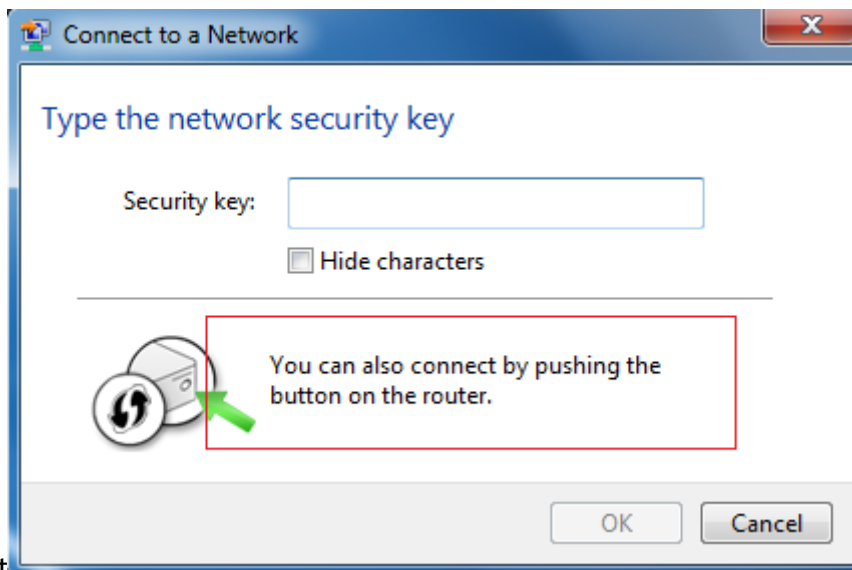
You can press the WPS button on the wireless card if your wireless card also supports WPS authentication. Waiting for a moment , It will be prompted to connect successfully.



Or

Select the SSID of the device and connect. then you can see connecting process

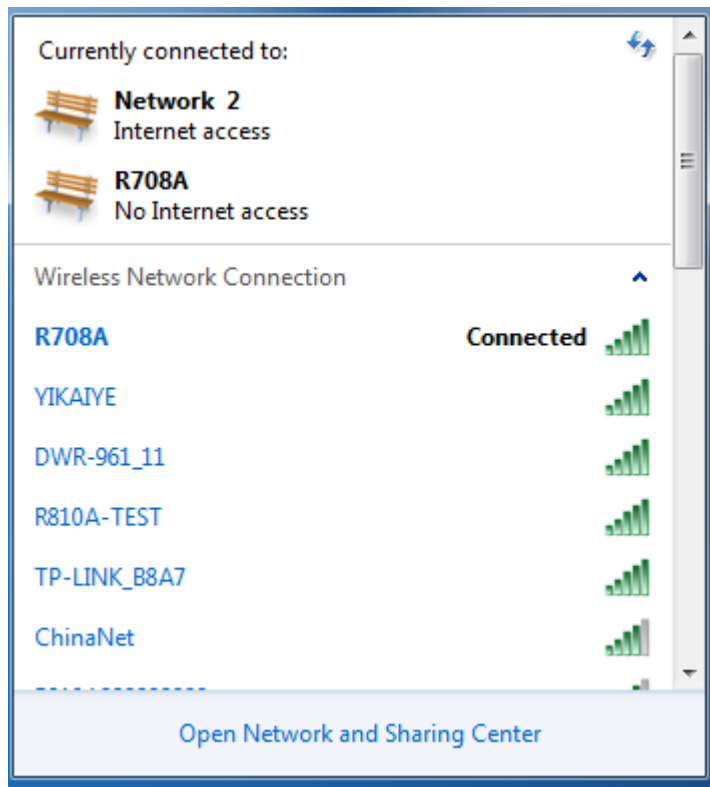
The second method is, Select the SSID of the device and



connect

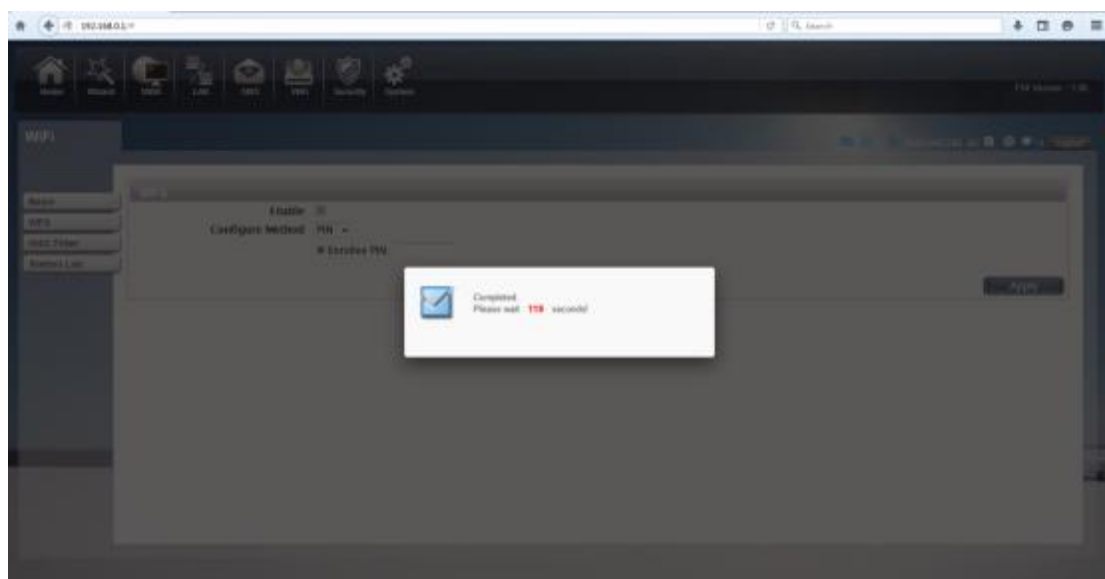
Press the WPS button on the R708A, activate the WPS. It will last 120 seconds.

then you can see connecting process.

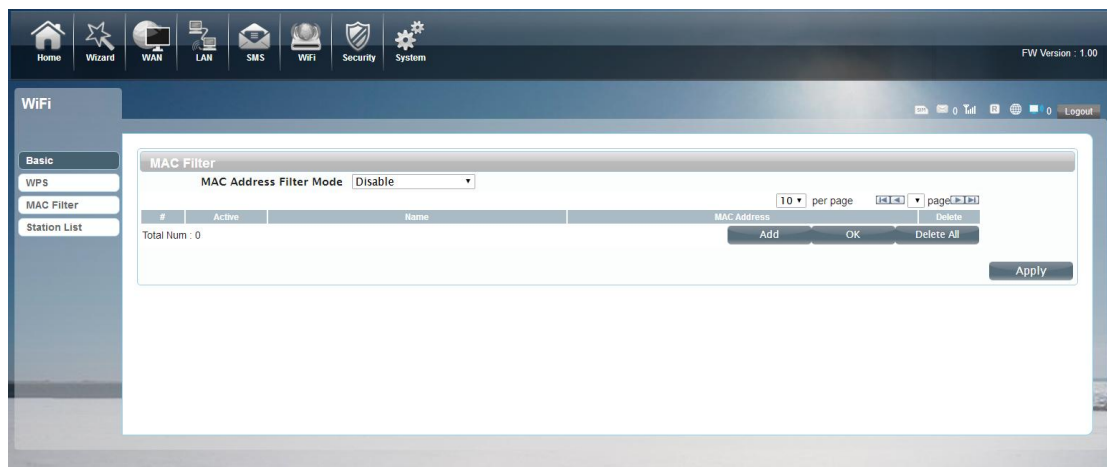


WPS PIN authentication:

The connection to the R708A is achieved by inputting the relevant PIN key into the enrollee PIN text box, which you may find in the wireless network card. When you applied, It will lasting 120 seconds. The premise is that the wireless network card or the clients must support WPS PIN authentication. Like the following pictures.



3. MAC Filter

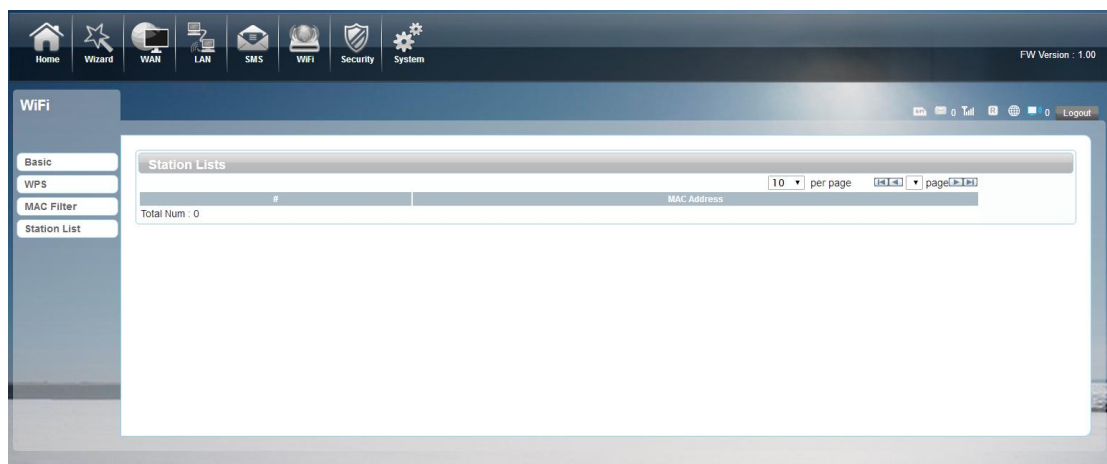


Deny list Stations: If you add the computers or wireless devices MAC address into the list, it can prohibiting the computers or wireless devices connect to the R708A. The computers or wireless devices MAC address which are not in the list can able to connect to R708A.

Allow list Stations: Opposite with Deny list Stations. It only allows the devices in the list to connect to the R708A, other wireless devices are unable to connect to the R708A

Disable: It means close the function of the MAC Address Filter.

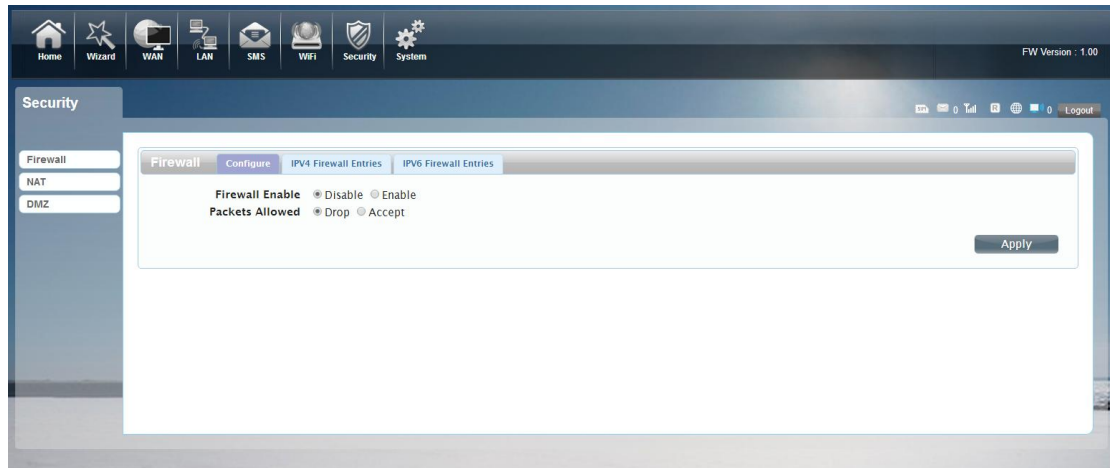
4. Station List



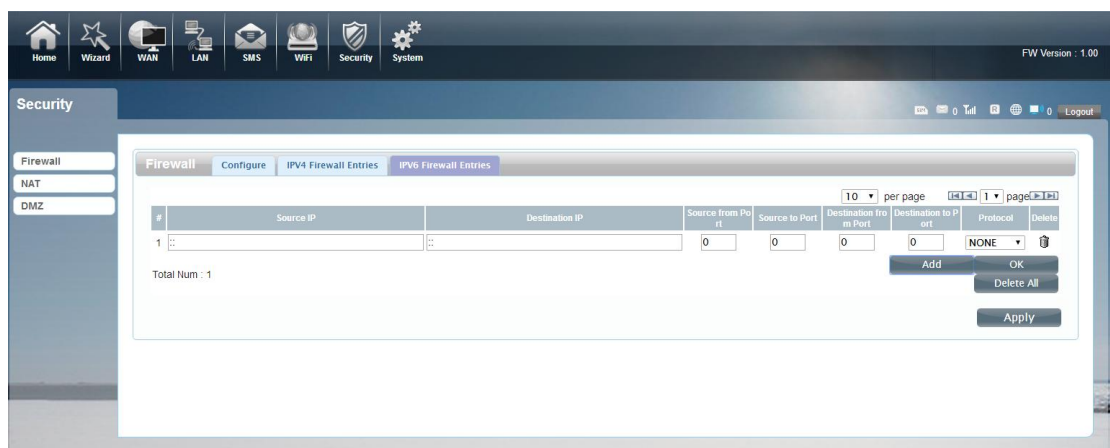
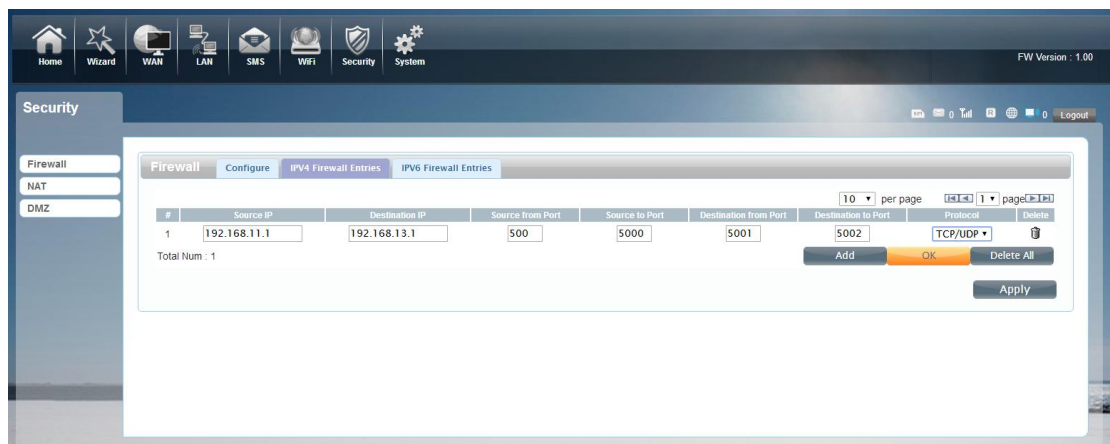
Show the information of wireless devices which are connected to the R708A.

● Security

1. Firewall

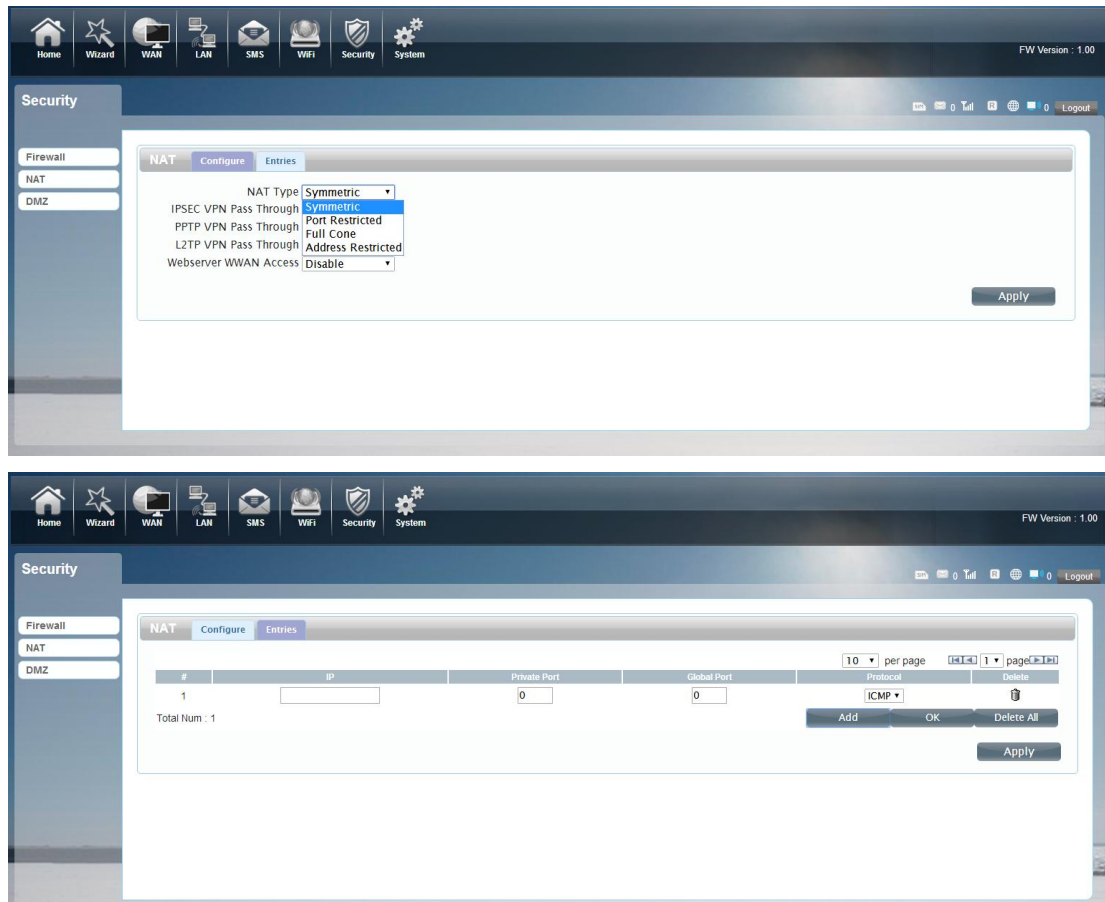


Firewall configuration: You can Disable or Enable the Firewall function. Also you can setting the matching packets ipv6/ipv4 rule to receive or reject.



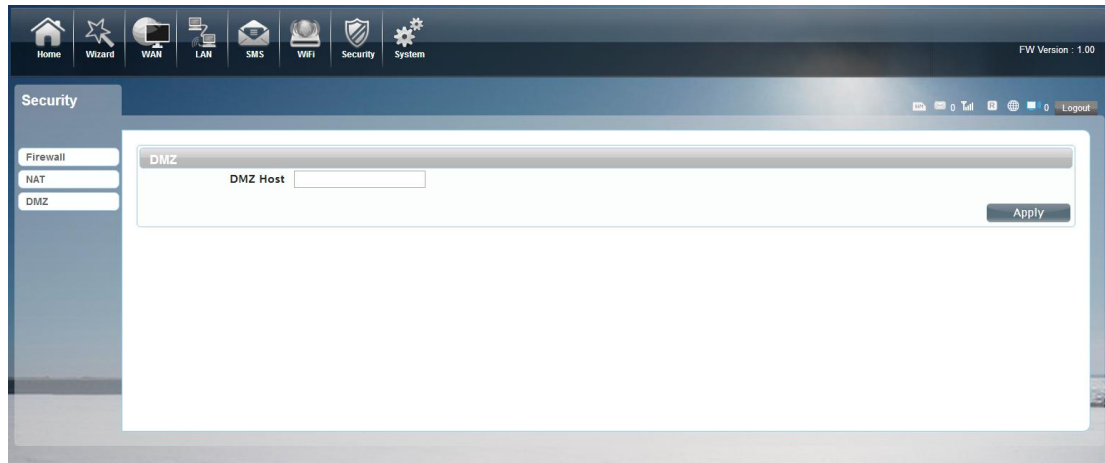
You can add the rule in the list and click apply confirm it.

2. NAT



The R708A supports NAT/IPSEC VPN Pass Through/PPTP VPN Pass Through/L2TP VPN Pass Through/Webserver WWAN Access.
When some hosts inside the private network have already allocated the local IP address, that is, only the private address used in the private network, but now they want to communicate with the host on the Internet (no need to encrypt), we can use the NAT method.

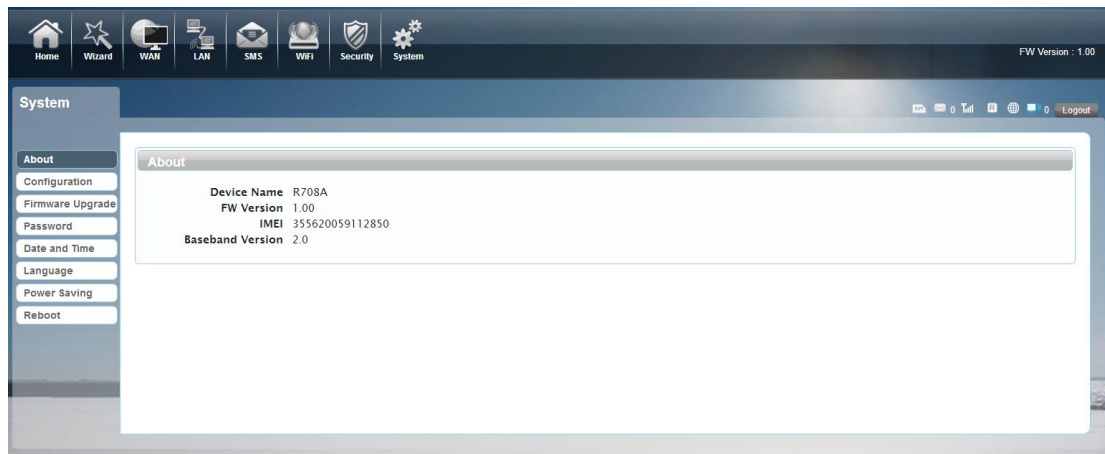
3. DMZ



Receive all the data from external network interface forwarded to “DMZ IP address”
Enable DMZ: If an application has trouble working from behind the router, you can expose one computer to the Internet and run the application on that computer.
Note: Placing a computer in the DMZ may expose that computer to a variety of security risks. Use of this option is only recommended as a last resort.
DMZ Address: Specify the IP address of the computer on the LAN that you want to have unrestricted Internet communication.

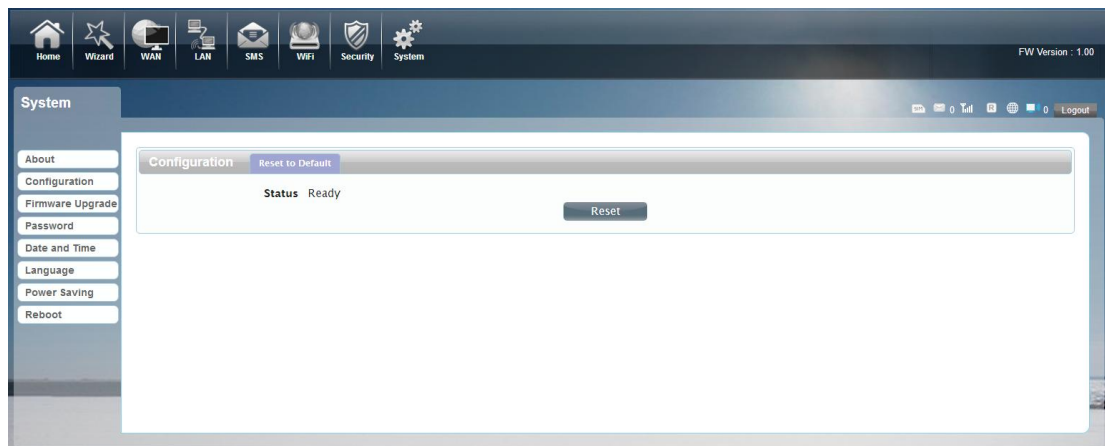
●System

1. About



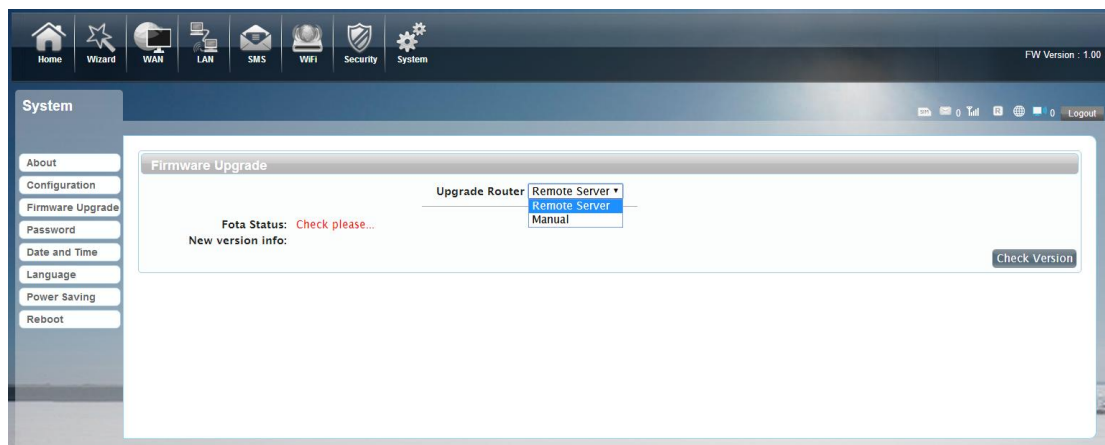
R708A displays some basic information, such as device name, firmware version, IMEI, baseband version.

2.Configuration



Restore the factory settings, All the personal configuration will be deleted, all configuration pages will be restored to the factory defaults.

3.Firmware Upgrade



The page allows you to upgrade the firmware. It have two mode.

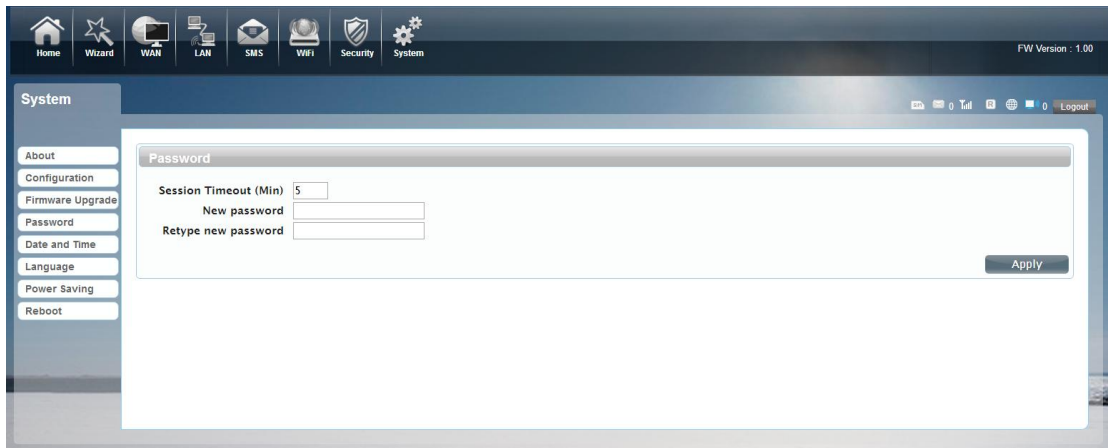
Remote Server:

When you power on the device , if you insert the SIM card and register the internet .it can automatic check whether there is a new version, if there is a new version was detected, can be directly upgrade.

Manual:

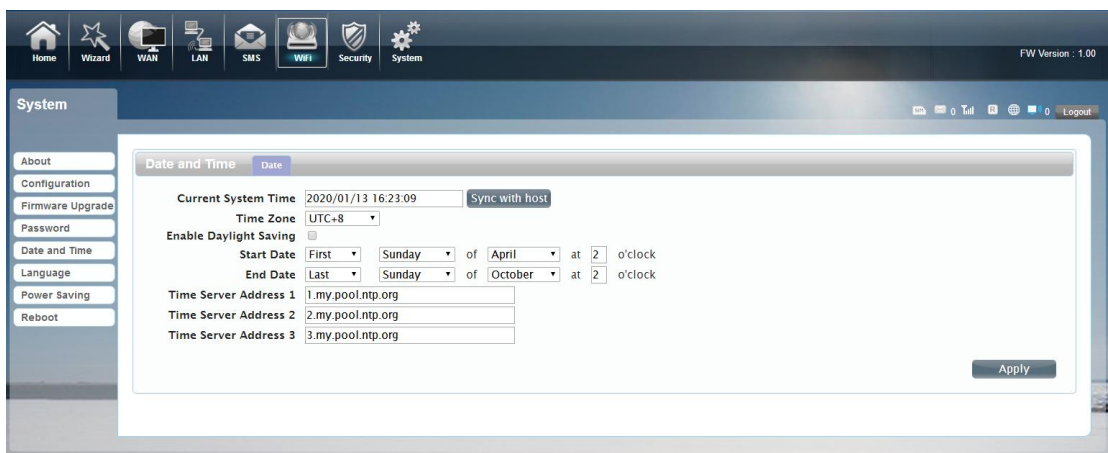
You can download updates to the local computer, and then choose to download in the page of upgrade file to upgrade.

4.Password



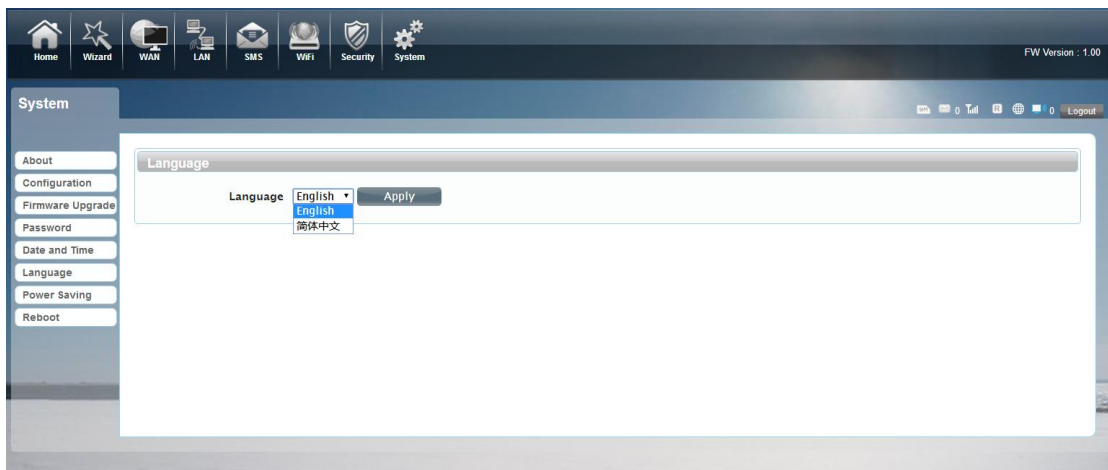
Modify the login password for administrator interface. Also you can setting the time to logout the UI automatically.

5.Date and Time



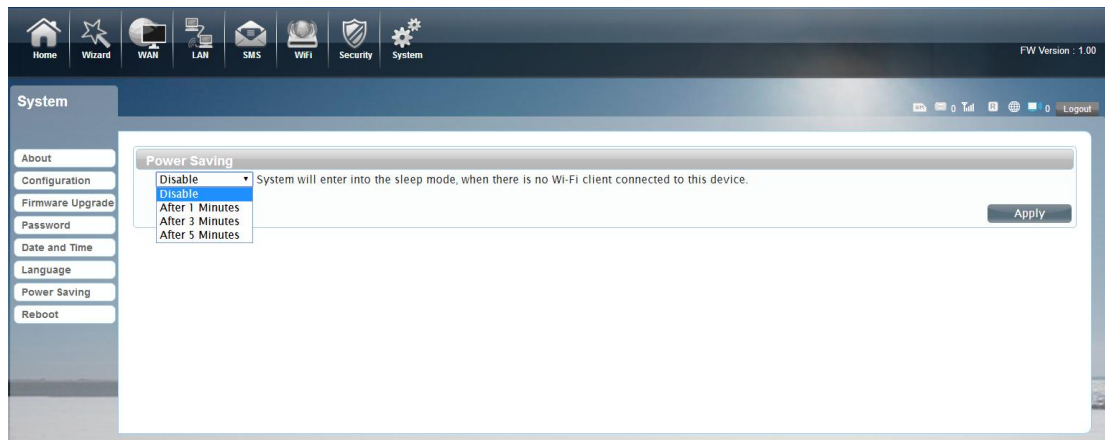
You can synchronize the time with the host , you can also select the time zone

6.Language



You can change the UI language in this page.

5.Power saving

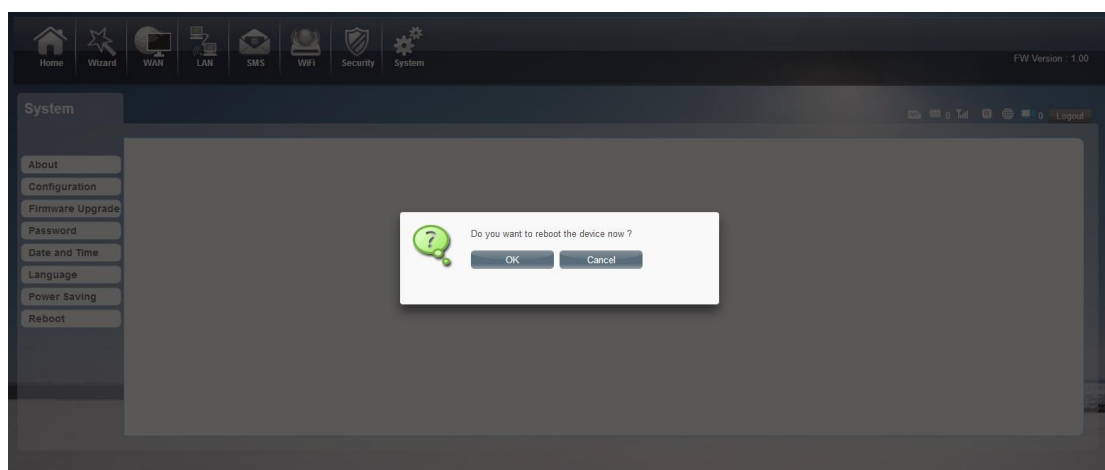


You can change the time of sleep mode or deep sleep mode. In this page you also can Disable the Power saving function.

Sleep mode: System will enter into the sleep mode, when there is no Wi-Fi client connected to this device.

Deep sleep mode: System will enter into deep sleep mode, when there is no Internet access and no Wi-Fi client connected to this device.

8.Reboot



Safety Warning

Caution:RISK OF EXPLOSION IF BATTERY IS REPLACED BY AN INCORRECT TYPE.DISPOSE OF USED

BATTERIES ACCORDING TO THE INSTRUCTIONS

FCC Statement

This equipment has been tested and found to comply with the limits for a Class B digital device, pursuant to part 15 of the FCC Rules. These limits are designed to provide reasonable protection against harmful interference in a residential installation. This equipment generates, uses and can radiate radio frequency energy and, if not installed and used in accordance with the instructions, may cause harmful interference to radio communications. However, there is no guarantee that interference will not occur in a particular installation. If this equipment does cause harmful interference to radio or television reception, which can be determined by turning the equipment off and on, the user is encouraged to try to correct the interference by one or more of the following measures:

- Reorient or relocate the receiving antenna.
- Increase the separation between the equipment and receiver.
- Connect the equipment into an outlet on a circuit different from that to which the receiver is connected.
- Consult the dealer or an experienced radio/TV technician for help.

Caution: Any changes or modifications to this device not explicitly approved by manufacturer could void your authority to operate this equipment.

This device complies with part 15 of the FCC Rules. Operation is subject to the following two conditions: (1) This device may not cause harmful interference, and (2) this device must accept any interference received, including interference that may cause undesired operation.

Specific Absorption Rate (SAR) information:

This Portable computer meets the government's requirements for exposure to radio waves. The guidelines are based on standards that were developed by independent scientific organizations through periodic and thorough evaluation of scientific studies. The standards include a substantial safety margin designed to assure the safety of all persons regardless of age or health. FCC RF Exposure Information and Statement the SAR limit of USA (FCC) is 1.6 W/kg averaged over one gram of tissue. Device types: Smart phone has also been tested against this SAR limit. This device was tested for typical body-worn operations with the back of the phone kept 0mm from the body. To maintain compliance with FCC RF exposure requirements, use accessories that maintain an 0 mm separation distance between the user's body and the back of the phone. The use of belt clips, holsters and similar accessories should not contain metallic components in its assembly. The use of accessories that do not satisfy these requirements may not comply with FCC RF exposure requirements, and should be avoided.