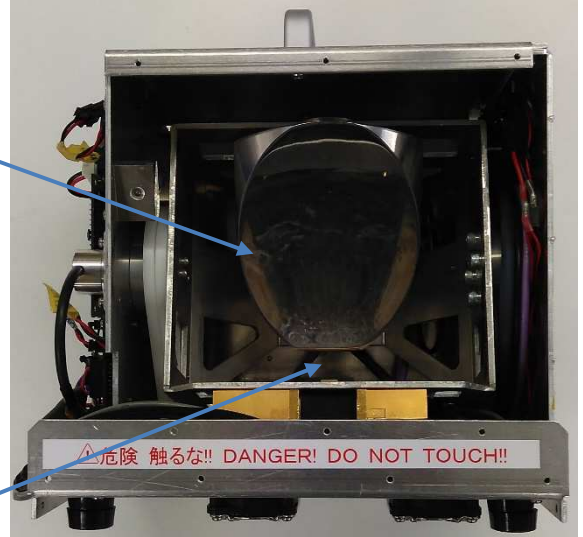


Internal photo

Rotating parabolic Antenna



Front side (no radome)



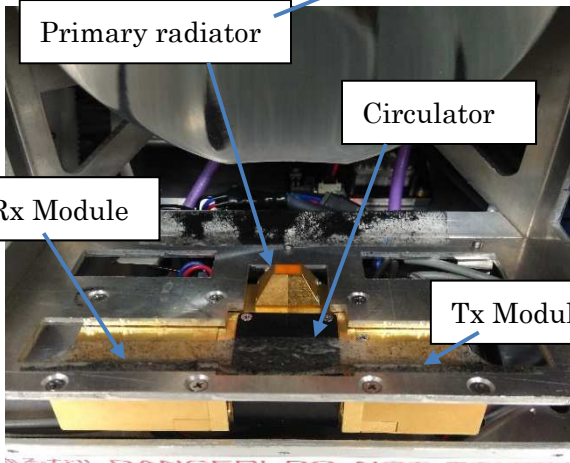
Front side (radome, cover & radio wave absorber removed)

Primary radiator

Circulator

Rx Module

Tx Module



Enlarged view (radome, cover & radio wave absorber removed)



Left side (FPGA, Motor cont. & ADcon)

Isolator

SPST-SW

Osc1&2

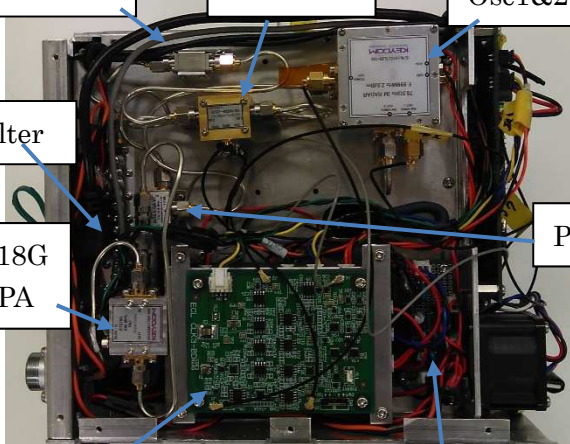
Filter

PD

5-18G MPA

ECL Clk

DDconverter



Rear side

FCC ID : 2AON3-RCS05

76.5GHz Imaging RADAR
 MODEL : RCS05
 Type : RI76G03-04
 S No. : 14418A17-02
 MANUFACTURER : KEYCOM CORP.
 MADE IN JAPAN

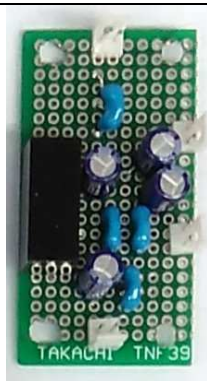
KEYCOM
 Multienergetic Technology

Label photo

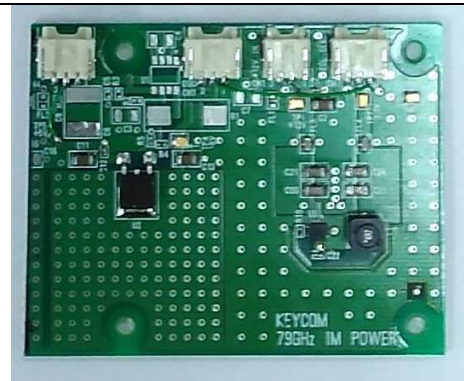
(Refer to external view of the right side photo for the label arrangement.)

(Note) LN Power and 79 G IM Power are installed under ECL - CLK. OSC 2 is installed under OSC 1.

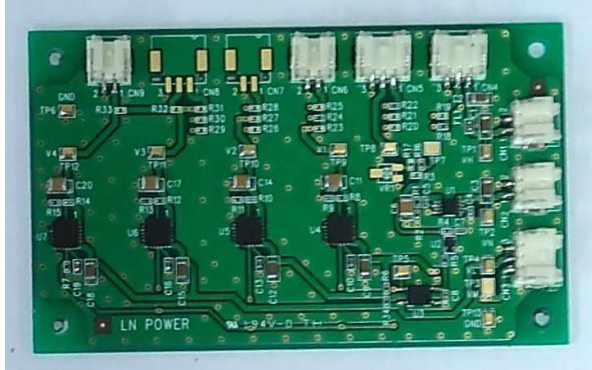
Internal photo of boards and modules



DD converter



79G IM Power



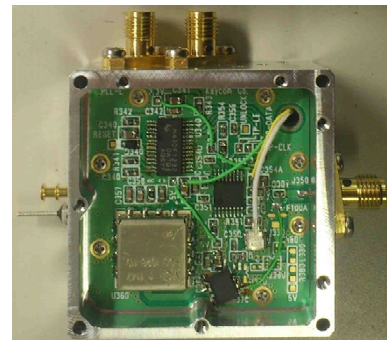
LN Power



ECL-CLK



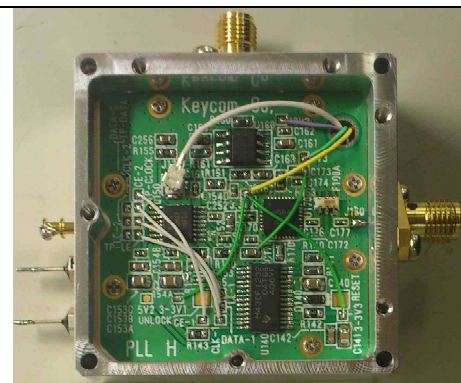
OSC1 Case



OSC1



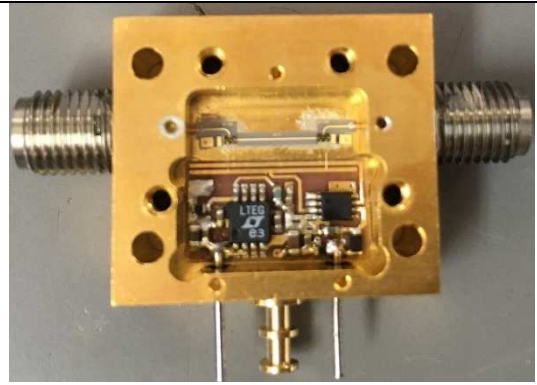
OSC2 Case



OSC2



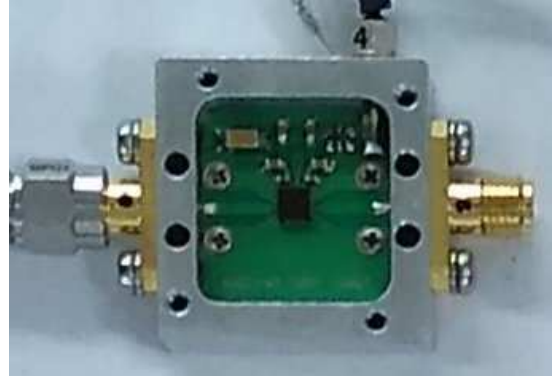
SPST-SW Case



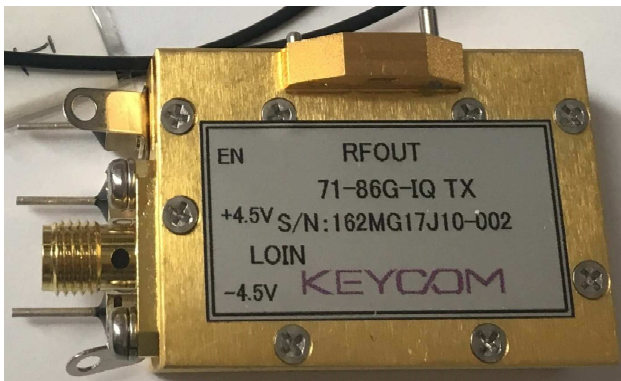
SPST-SW



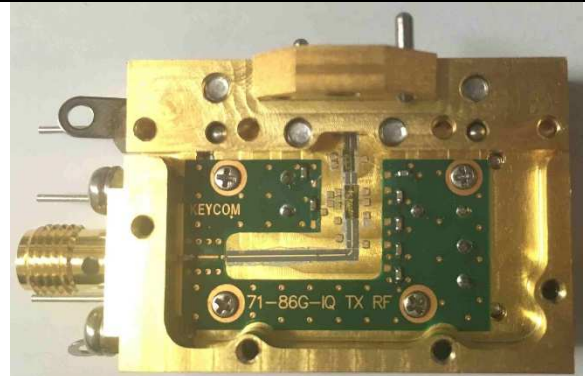
5-18GHz MPA Case



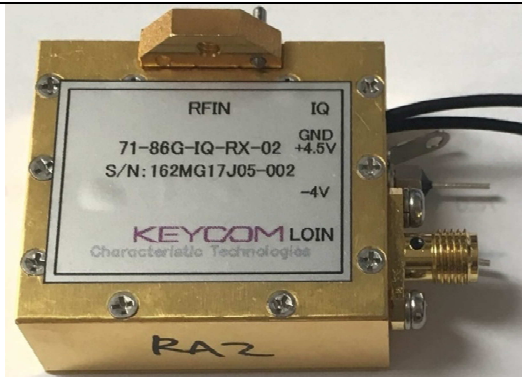
5-18GHz MPA



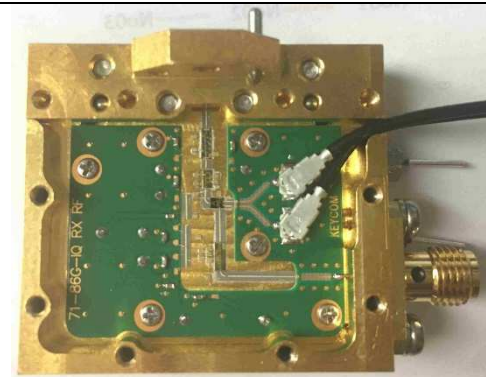
Tx Module Case



Tx Module



Rx Module Case



Rx Module

The Digital Processing Board has a built-in differential amplifiers and AD converter, and the FPGA EVL is mounted on the board and the Motor Control is directly connected to the board.

Digital Processing Board

AD converter

FPGA EVL



differential amplifiers

Motor Control Board