

# Olive Union User Manual

<Caution!> Olive is a device that controls the ambient sound for people with normal hearing.

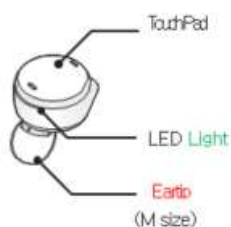
<Caution!> Olive is not a medical device and cannot replace diagnosis, treatment or physical function.

<Caution!> High volume can damage your hearing if used for long periods.

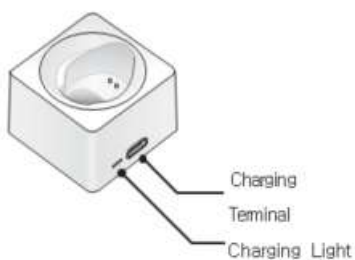
Thank you for making your first meeting with Olive. This manual contains the basic information you need to understand and use Olive. Please refer to it before using the product to meet your daily routine.

## Components

Olive

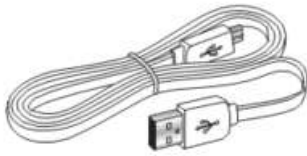


Charger Cradle

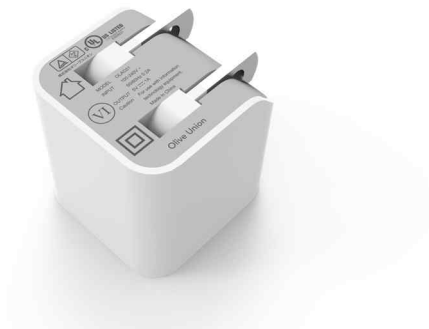


Charging Cable

Eartip



AC Adapter



Silicon tip : 1 each of S / L size

Foam tip : 1 each of M / L size

- 3 types of silicon tips (one each large, medium and small)
- Three foam eartips (one large, one medium and one small)

### Basic usage

\* Olive status can be checked by LED light and guide sound.

If you operate the olive with your hands, you may not hear the guide sound. When operating the touch sensor on the top of the product, please check the LED light.

### Charging

If you use the olive for the first time after purchase or leave it for a long time, please charge the battery before use.



#### 1. Charging method

- a. Remove the green sticker on the back of the olive.
- b. Put the olive in the charger.
- c. Check the charge

- d. The olive LED light will turn on and off slowly during charging.
  - e. After about one hour, the Olive LED will turn off.
  - f. charger
2. Charging method
- a. Connect the AC adapter and charging cable.
  - b. Connect the USB cable to the charging port on the charger.
  - c. Check the charge
  - d. The LED on the left of the charging port glows green during charging.
  - e. After about 2 hours, the charger LED will turn off.

### **Correct wearing**

#### **Correct example**



Put the olive on your ear with the olive LED facing down.

When not using olive fingers on the body  
Hold it and remove it gently.

#### **Wrong example**



Please pay attention to the direction of the olive LED.

Wearing is important because the two microphones collect different sounds.

### **When not comfortable to wear**

Find the best comfort with the included ear tips.

1. Remove the olive and ear tips.
2. Replace the ear tips (select) the ear tips you want to replace by inserting them in the olive speaker section.

### **Olive Touch Sensor Operation**

1. Power On
  - a. Press the touch sensor for 3 seconds.
  - b. The LED flashes once and the olive lights with a “Power On” sound.
2. Power Off
  - a. Press the touch sensor for 6 seconds.
  - b. The LED will flash four times and the olive will go off with a “Power Off” sound.

3. Pairing
  - a. Press the touch sensor for 4 seconds.
  - b. The LED will blink left and right and pairing mode will be activated.
  - c. When the pairing of olive and smartphone is completed, LED lighting is turned off.
4. Volume control
  - a. Volume up
  - b. Touch the touch sensor twice shortly.
  - c. You will hear a high-frequency beep and the sound will be loud.
5. Volume down
  - a. Touch the touch sensor briefly once.
  - b. You will hear a low-frequency beep and the sound will be quiet.

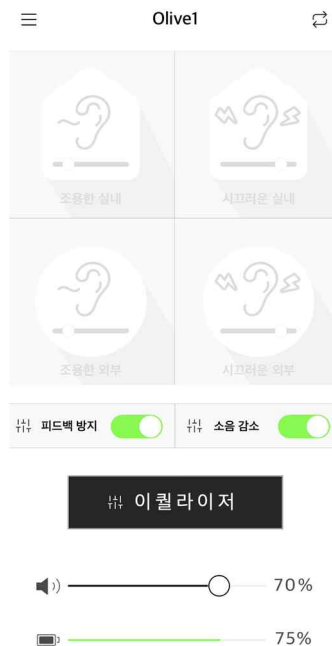
### **Convenient function**

1. Answer call
  - a. When Olive and your smart device are connected, you can answer and talk on Olive.
  - b. Answer a call: Touch the touch sensor briefly.
2. End the call
  - a. Touch the touch sensor for 2 seconds.
3. Listening to music
  - a. After connecting the olive with the smartphone, the music plays from the paired olive when the player plays the music.

### **Getting started with olive**

1. Follow these instructions in order to use Olive easily.
2. Olive Application Preparation
  - a. Download
    - i. Search for 'Olive Union' on the Android-Google Play Store and IOS-App Store and install the application on your smartphone.
  - b. Sign Up-Login
    - i. Enter your email and password to join Olive Union.
    - ii. Once you have registered, log in with your email and password.
  - c. Agreement
    - i. Read the Terms of Use and Privacy Terms carefully and check "I agree."
  - d. Select version
    - i. The olive version currently purchased is Olive Smart Ear.
    - ii. On the Version Selection page, select Olive Smart Ear.
3. Usage Guide
  - a. After accepting the terms, select the olive version to proceed with the guide.

- b. After completing the 5 guides, you are ready to use Olive.
  - c. Getting started
    - i. Check the olive components and how to properly wear them.
  - d. Olive registration
  - e. Connect olive and smartphone, the application.
  - f. Hearing test
  - g. Explain the screening of the Hearing Test Result Report.
  - h. Ease of Use (Equalizer + Easy Setting)
  - i. Home screen Easy setting, equalizer usage, and screen configuration.
4. Olive Application Introduction
- a. Home screen



**Easy setting, equalizer, and volume control buttons make olive use more convenient.**

#### **Easy setting**

Press the button according to the room and noise level.

#### **Menu**

Shows the full menu of the Olive application.

\* Menu screen image

### **Feedback Cancellation**

Reduces feedback noise in real-time.

### **Equalizer**

Moves to the equalizer setting screen.

### **Volume control**

Adjust the volume.

### **Battery**

Check the battery level.

### **HOME**

(Deactivated when the olive is not registered.)

Go to the home screen for easy use.

### **Usage Guide**

You can see the guide again.

### **Olive list**

You can view the list of olives and add & delete them.

### **Hearing test**

### **Connecting Olives**

○ Olive □ App △ Smart Device

Look carefully at the symbols and read the description.

### **○ Create Pairing Mode**

Press the touch sensor for 4 seconds.

The olive LED light will continue flashing and you will be in pairing mode to connect with your smart device.

### **Start registration**

Tap Olive List in the app menu.

Press the + button to register a new olive.

Press the "Settings" button.

### **△ Connecting Bluetooth**

Activate Bluetooth.

From the list of newly connected devices

Find and connect names that start with "Olive-".

### **Checking the Olive Light**

Olive LED turns off when Bluetooth connection is complete

Lose.

### **Find Olive**

Return to the app and press the “Next” button

On the olive find screen

Press the "Find" button to search for olives to register in the app.

### **Register for □Olive**

Check the detected olives and press the "Add" button to complete.

\* IOS device pops up a “Bluetooth Connection Request” popup window.

Please press the "Connect by Pair" button and follow the same procedure.

### **Hearing test**

\* Please check before starting.

Have you registered olives?	Check out the Olive Connection manual.
Is Bluetooth on your smart device enabled?	Please activate Bluetooth on your smart device.
Is olive connected to the app?	Please select the olive you want to use from the application's olive list.

When finished, press the hearing test menu of the app to start the hearing test.

### **Find a quiet place**

Find a quiet place for an accurate inspection.

### **Wearing properly**

Look at the example of wearing and wear it correctly.

#### **1. practice test**

- a. There is one practice test before this test.
- b. As soon as you hear the test tone, press the “Continue” button at the bottom of the screen.

#### **2. Setting test**

- a. The main test starts immediately after the practice test.
- b. As soon as you hear the test tone, press the “Continue” button at the bottom of the screen.

#### **3. Set of calibration checks**

- a. Examine the opposite ear for accurate hearing correction.
- b. Place the olive on the other side of the ear where the test was done and do one set of calibration tests.

#### 4. Result Synchronization

- a. The test results are synchronized with the olive.
- b. Olive will turn off after synchronization. If you use it immediately, please use the olive power.

To use the app's features, go to the Olive menu in the app and connect the olive you want to use.

#### Equalizer

\* Please check before starting.

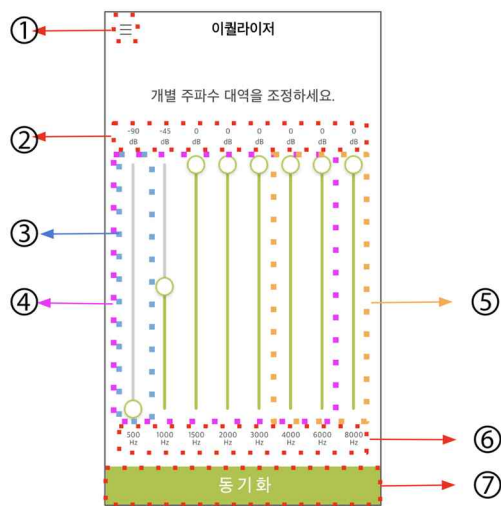
Have you registered olives?	Check out the Olive Connection manual.
Is Bluetooth on your smart device enabled?	Please activate Bluetooth on your smart device.
Is olive connected to the app?	Please select the olive you want to use from the application's olive list.

When you are done, tap the Equalizer menu in the app to begin fine-tuning.

After a hearing test, the user can directly adjust the frequency volume.

Hearing cannot be higher than the volume adjusted. If necessary, you can fine-tune the individual frequency volume down.

It can be used to adjust the volume of ambient sounds and speech sounds depending on the situation. It's important to practice adjusting to low volume, so follow the instructions in the User Guide to learn the features.



## Talk

500 ~ 6000Hz is the range of speech sound.

Adjust this frequency when you want to focus on the conversation

## Ambient sound section

500, 4000, 6000, and 8000 Hz are in the low and high ranges. In case of noise, please adjust this section.

## FAQ

### 1. Do I need a smart device to use Olive?

There are only two cases where you need a smart device when using Olive.

When you want to use the application's features (hearing test, easy setting, equalizer)

When you want to listen to music played on your smart device or make a call through Olive

Except in both these cases, olives can be used without connection with a smart device.

## Bluetooth connection failed.

### Check the Olive status

#### Check pairing mode

Normal olive pairing mode should keep the LED light blinking slowly.

Press the touch sensor for 4 seconds to put it in pairing mode.

#### Use 2 Olives or more

### Check the Smart Phone

#### Headphone icon (iOS)

If your hearing aid and smart device have a successful Bluetooth connection, a headphone “headphone” icon will appear in the menu bar at the top of your smart device.

Olive is a mono type, only one at a time  
 You can connect with the smart device.  
 Other olives when multiple olives are on  
 May be connected.  
 Unplug any olives other than the one you  
 want to connect.  
 Please turn off.

#### Check Power

Insert the olive into your ear and press the  
 touch sensor once.  
 If you do not hear a dial tone, the power is  
 off. Turn it on or plug it into a charger.

#### Battery check

Olive LED is on even in pairing mode  
 If it doesn't, charge it for more than 30  
 minutes.

If you don't see the headphones icon  
 Reconnect Bluetooth.

#### Check the notification bar (Android)

Lower the notification bar down twice on your  
 device and the olive name will appear under the  
 Bluetooth icon.

If you don't see your hearing aid name, reconnect  
 Bluetooth.

### 3. I want to reset all settings.

Remove from app olive list

From the Application Olive List menu, select the checkbox to the right of the olive you want to  
 delete.

Tap the trash can icon in the top right corner to delete.

Please check before deleting. Initialize Bluetooth connection

iOS	Android
1. Set Bluetooth list on your smart device Go. 2. Touch the “exclamation mark” icon to the right of the olive name. 3. Tap “Erase this device” and reconnect Bluetooth.	1. Setting Bluetooth list of smart devices Go. 2. Touch the “gear” icon to the right of the olive name. 3. Press "Unregister" and reconnect Bluetooth.
Please go through the olive registration process again.	Please go through the olive registration process again.

### 4. (multiple users) Multiple olives are detected in the Bluetooth settings.

Olive is a mono type that can only be connected to one smart device at a time.

If you are using multiple olives, please power off the olives except for the one you wish to connect.

### 5. Loudness occurs when you hold an olive in your hand or when you are in a confined space.

This phenomenon is called feedback or howling and is an audio device with integrated microphones and a  
 speaker such as olive.

This is what happens. In a confined space, the sound of the speaker goes back into the microphone and  
 repeats infinitely

Be careful not to block the olive microphone holes at the same time.

**6. During music playback and calls, only one hearing aid will make a sound.**

Olive is a mono type, so when connected with a smart device, only one is connected at the same time.

**7. Falls from the ear**

We recommend replacing the ear tip to fit the ear canal size and adjusting it so that it rests as much as possible.

**8. I have a Bluetooth connection with my smart device but I cannot connect with the app.**

In the application menu, connect the olive to use in the olive list.

If the connection does not work, follow the instructions to reset the settings and try to reconnect.

**FCC Compliance Statement**

This device complies with part 15 of the FCC rules. Operation is subject to the following two conditions:

(1) This device may not cause harmful interference, and (2) this device must accept any interference received, including interference that may cause undesired operation.

**FCC Interference Statement**

This equipment has been tested and found to comply with the limits for a Class B digital device, pursuant to part 15 of the FCC Rules. These limits are designed to provide reasonable protection against harmful interference in a residential installation. This equipment generates, uses and can radiate radio frequency energy and, if not installed and used in accordance with the instructions, may cause harmful interference to radio communications. However, there is no guarantee that interference will not occur in a particular installation. If this equipment does cause harmful interference to radio or television reception, which can be determined by turning the equipment off and on, the user is encouraged to correct the interference by one of the following measures:

- Reorient or relocate the receiving antenna.
- Increase the separation between the equipment and receiver.
- Connect the equipment into an outlet on a circuit different from which the receiver is connected. •

Consult the dealer or an experienced radio/TV technician for help.

**FCC Caution**

Any changes or modifications not expressly approved by the party responsible for compliance could void the user's authority to operate this equipment. This transmitter must not be co-located or operating in conjunction with any other antenna or transmitter.