

DO NOT PRINT COMMENTS

MERKURY INNOVATIONS

MERKURY INNOVATIONS CONFIDENTIAL

FILE INFORMATION

DATE: 03/05/18
FACTORY: SWETZ SOUND
MODEL NUMBER:
MI-BTE11-Series (MANUAL)

PRINTER SPECIFICATIONS

FILE NAME: MI-BTE11_Manual_030518.ai
SCALE: 100%
SIZE: Trim: W 372mm x H 144mm
PAPER STOCK: 80g Art Paper
INNER STRUCTURE: (none)
FINISH: PP Matte Varnish Coating
INKS: 1/0
Greyscale

PRESS WORK / NOTES: Trim to size, score, fold & glue in specified areas.

----- Trim
- - - - - Score

DO NOT print Comments or Dielines.

Physical sample according to specs must be approved by MERKURY before proceeding to production.

CONTACT

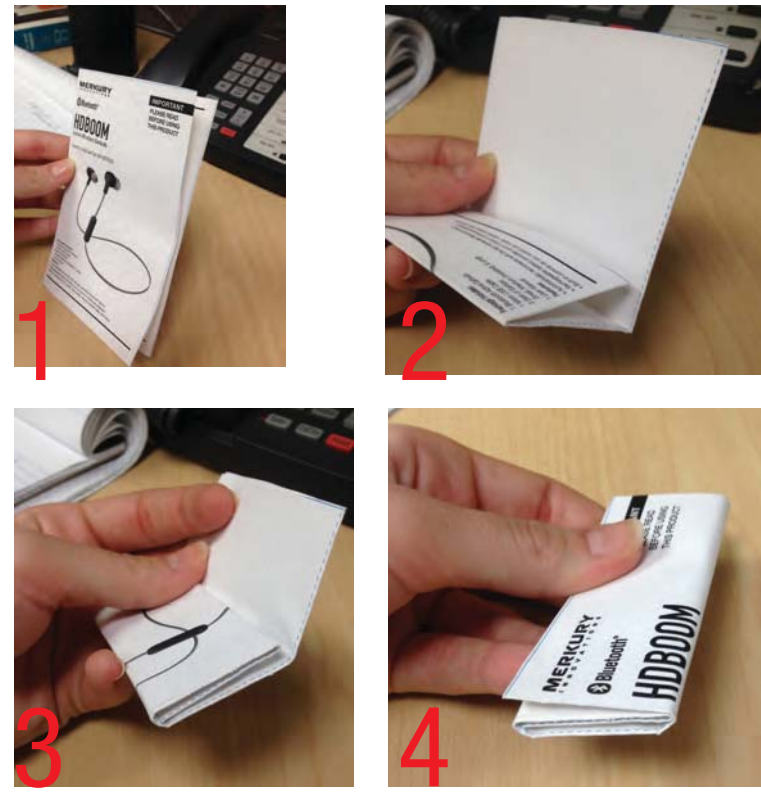
MERKURY CHINA:
Perry
perry@merkuryinnovations.com.cn

COMMENTS (Internal reference only)

File created by Dmitry Shmakov
- Please include this manual in all packaging for MI-BTE11
- Greyscale
- Double sided printing
- FIT INSIDE STORAGE COMPARTMENT IN INNER TRAY

HOW TO FOLD IT (Internal reference only)

PLACE IN STORAGE COMPARTMENT ONCE FOLDED



Troubleshooting

No power	Recharge your earbuds using the included micro USB cable. Try using a different micro USB cable.
Music is not playing over Bluetooth	Make sure your Bluetooth device has A2DP profile. Check if both devices are paired and connected over Bluetooth. Restart the earbuds to reconnect your Bluetooth device.
Bluetooth device will not reconnect with the earbuds	Navigate to your Bluetooth settings menu on your Bluetooth device, tap "MERKURY BTE11", and select "Forget". Now follow the steps to pair your device again.

Specifications:
Frequency Response: 20Hz to 50KHz
Driver Size: 10mm
Impedance: 32 ohm

Battery Information:
Built-in Battery: Lithium
Input: DC 5V/60mA
Music playing time: Up to 3 Hours*
Charging time: 1.5 hours

Bluetooth Information:
Bluetooth Specification: V4.2
System Requirements: Bluetooth-capable device

Additional Connection Sources:
Power Source: Built-in rechargeable battery or via USB cable

*Approximate Playback time depends on individual use and may be more or less than the time specified.

FCC Notice:
NOTE: This equipment has been tested and found to comply with the limits for a Class B digital device, pursuant to part 15 of the FCC Rules. These limits are designed to provide reasonable protection against harmful interference in a residential installation. This equipment generates noise and can radiate radio frequency energy and, if not installed and used in accordance with the instructions, may cause harmful interference to radio communications. However, there is no guarantee that interference will not occur in a particular installation. If this equipment does cause harmful interference to radio or television reception, which can be determined by turning the equipment off and on, the user is encouraged to try to correct the interference by one or more of the following measures:
- Reorient or relocate the receiving antenna.
- Increase the separation between the equipment and receiver.
- Connect the equipment into an outlet on a circuit different from that to which the receiver is connected.
- Consult the dealer or an experienced radio/TV technician for help.

Changes or modifications not expressly approved by the party responsible for compliance could void the user's authority to operate the equipment.

This device complies with Part 15 of the FCC Rules. Operation is subject to the following two conditions:
(1) This device may not cause harmful interference, and
(2) This device must accept any interference received, including interference that may cause undesired operation.

Technical Support:
Please do not attempt to fix the product by yourself. If you are experiencing any problems with the product, please do not return it to the store you bought it from. You can contact our technical support representatives and they will assist you with any questions you might have.

For assistance operating your product, please consult the User's Manual first, then feel free to contact Merkury Innovations technical support:
Merkury Innovations
45 Broadway, 3rd Floor New York, New York 10006
www.merkuryinnovations.com
E-mail: support@merkuryinnovations.com

©2018 Merkury Innovations, LLC.
To explore our full selection of products, visit us at: www.merkuryinnovations.com

The Bluetooth wordmark and logo are registered trademarks owned by Bluetooth SIG, Inc. The illustrated product and specifications may differ slightly from those supplied. All other trademarks and trade names are those of their respective owners.

Made in China

Charge It

- Plug the micro USB cable into the micro USB port on the side of the in-line remote, and connect the other end of the cable to either a computer USB port or to a USB-compatible car or wall charger.
- When charging, the LED indicator will glow red.
- When fully charged, the LED indicator will turn off. Charging time is approximately 1.5 hours.
- NOTE: When connected to an Apple device, the battery level will show on your screen next to the Bluetooth icon.**

Pair & Connect with a New Device

- With the **Bounce** Earbuds powered off, press & hold the power button on the earbuds for 3-5 seconds to turn on the earbuds. The LED light will flash blue and the earbuds will emit a tone.
- NOTE: If your earbuds are already turned on, you must first power off the earbuds before completing the above step.**
- After a few seconds the LED light above the "power" button will quickly flash blue. Your earbuds are now ready to be paired.
- On your Bluetooth-enabled smartphone, tablet or media player, navigate to the Bluetooth settings menu, turn on the Bluetooth feature, and search for new devices.
- After a few seconds you will see "MERKURY BTE11" listed.
- Tap this model to select it. The LED will begin to slowly blink blue, and the earbuds will emit a tone to indicate that it has been successfully paired with your device.
- NOTE: If your device asks for a password to connect to the earbuds, enter "0000"**

Power On & Off/Reconnect to Bluetooth

- You only need to pair your Bluetooth device with the **Bounce** Earbuds once.
- With your previously paired device's Bluetooth turned on and in range, press & hold the power button on the **Bounce** Earbuds for 3-5 seconds.
- The earbuds will power on, a blue LED light will flash, and will automatically reconnect to the last Bluetooth device they were connected to.
- To turn the **Bounce** Earbuds off, press & hold the "power" button again for about 4 seconds. The LED light will flash red, and the earbuds will emit a descending tone to indicate that the earbuds are now powering off.
- If you have a previously paired device that does not auto-reconnect, navigate to the Bluetooth settings menu on your device, turn on the Bluetooth feature, and select "MERKURY BTE11" from your list of paired Bluetooth devices.

Play

- Connect your device to the **Bounce** Earbuds via Bluetooth (see "Pair & Connect with a New Device").
- Connect with a New Device).
- Open your favorite music app and press play.
- Control the music, track & volume from your device, or control them from the in-line controls on the **Bounce** Earbuds. Press the "Power" button once to play/pause music & answer calls, or press it twice to redial the last call you made.
- Press the "+" or "-" button once raise/lower the volume on the earbuds. Press and hold to skip to the next/previous track. Note: Volume on your device and on the earbuds are controlled separately.
- All audio, including music, games, videos, and notifications will be routed through the **Bounce** Earbuds.

Multi-Function Button Uses

Power Function
Press & Hold (3-5 Sec.)

Power's Other Functions
Press "Power" Once

Press & Hold "Power"

Press "Power" Twice

"+" and "-" Functions
Press "+" or "-" Once
Press & Hold "+" or "-"

- Power on the earbuds and automatically reconnect with last connected Bluetooth device, or power off the earbuds.
- Play/pause music, answer/end phone calls
- Hang Up after a phone call
- Reject a phone call
- Switch between two phone calls
- Redial the last call you made
- Increase volume, decrease volume
- Skip to next audio track, skip to previous audio track

Product Diagram

- In-line Mic & Controls
- LED Charging Indicator Light
- Audio Drivers
- Ear tips
- Micro USB Charging Input (under the cover)

Controls Diagram

Remote, Front View

LED Indicator Light

Micro USB Charging Input (On Left Side)

Button: Press: Increase Volume
Press & Hold (2-3 sec.): Next Track

Power/Play Button

Power On/Off Bluetooth Pairing
Play/Pause Music Answer/End Calls Redial Last Call

Button: Press: Decrease Volume
Press & Hold (2-3 sec.): Previous Track

OUTSIDE

MERKURY INNOVATIONS Bluetooth

BOUNCE

BRAIDED CABLE WIRELESS EARBUDS

User's manual for MI-BTE11

- 1 Bluetooth® Earbuds
- 1 Charging Cable
- 3 Sizes of Earbuds: Small, Medium (Standard), & Large
- 1 User Manual

IMPORTANT
PLEASE READ BEFORE USING THIS PRODUCT

Features:

- Automatically reconnects with the last connected Bluetooth® device
- Rechargeable battery provides up to 4 hours* of continuous playback
- Built-in controls let you control your music, volume, answer calls, & more

COVER