

# BT Antenna Test Report



<b>Customer</b>	
<b>Project</b>	<b>SP280B</b>
<b>Product Description</b>	<b>onboard antenna</b>

<b>Report Date</b>	<b>2024.4.23</b>	<b>Prepared by</b>	<b>Hao_li</b>
<b>Report Version</b>	<b>V0</b>	<b>Checked by</b>	

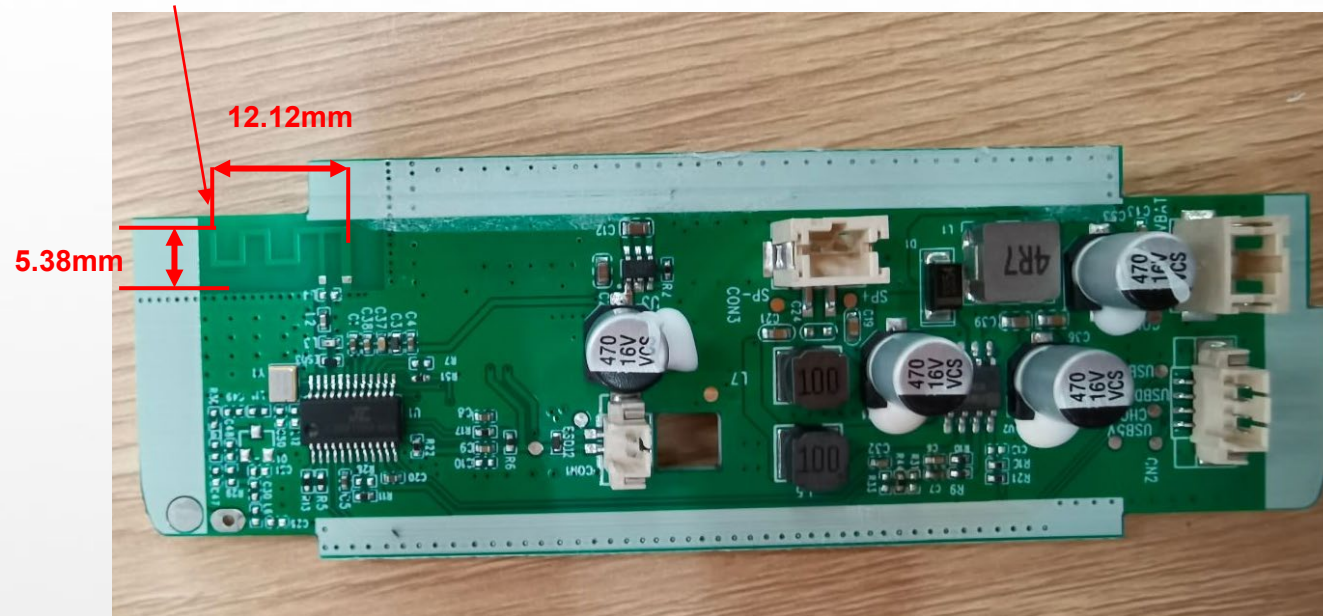
# Introduction

**I. Test Condition**

**II. Test Result**

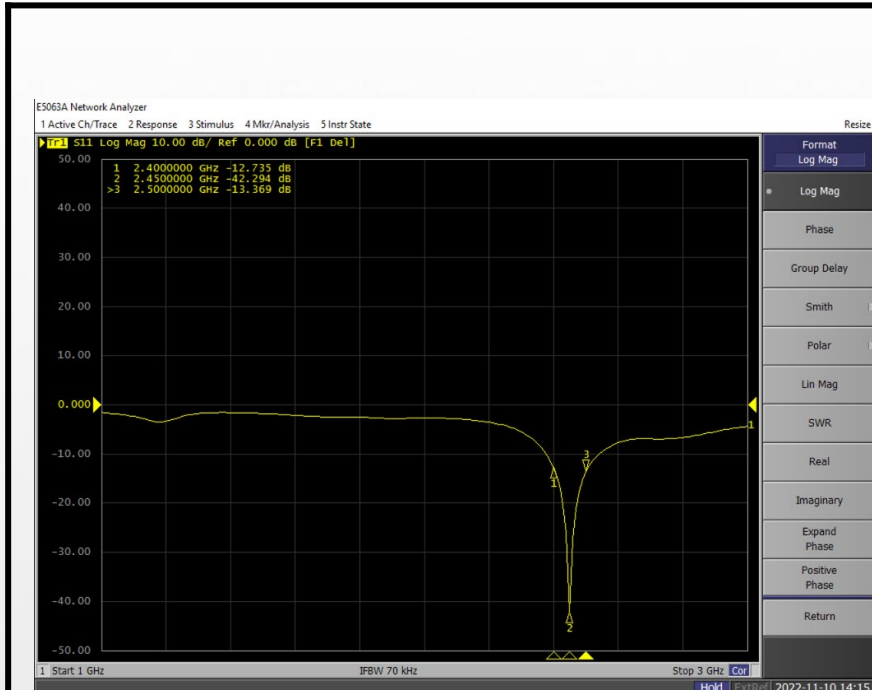


## Antenna

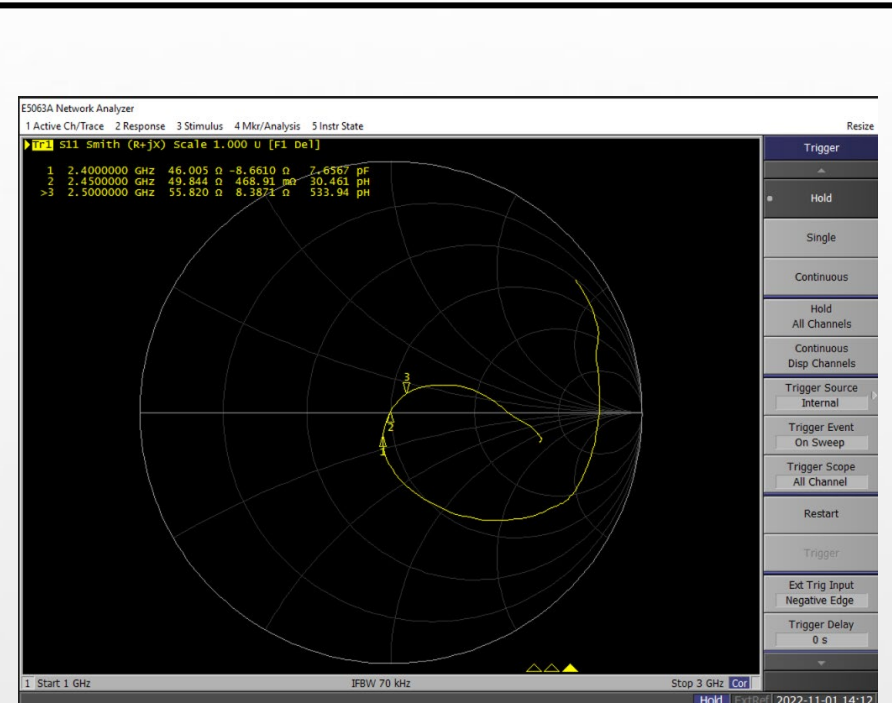


Antenna size :12.12mm\*5.38mm  
Antenna supplier: Shenzhen Swetz Sound Technology Co.,Limited  
Company address: No.19, Jianlong Street, Baoan Community, Yuanshan, Longgang District, Shenzhen, Guangdong, China

## 2.1. Antenna S-Parameter

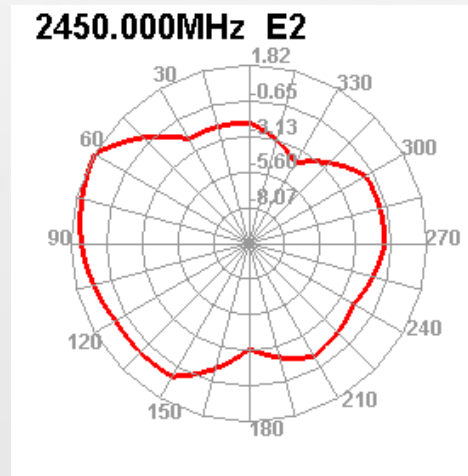
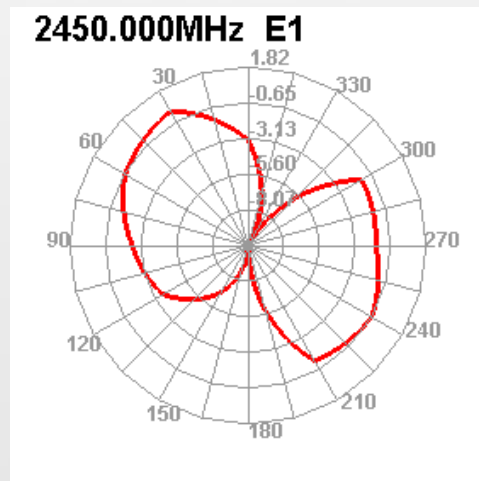
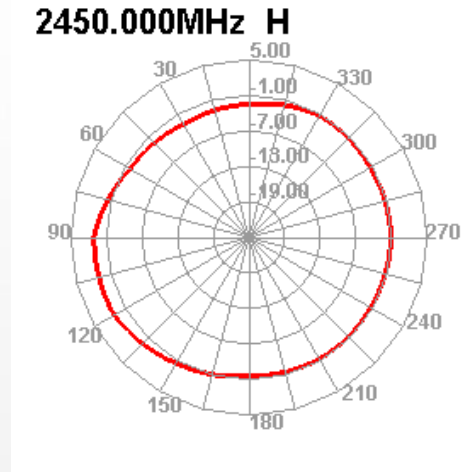
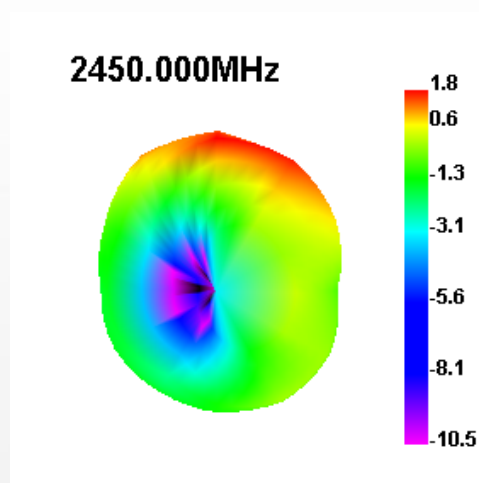


Return loss



Smith-Chart

## 2.2 3D/2D Gain Pattern



### 2.3 Efficiency And Peak Gain

Frequency (MHz)	Efficiency (%)	Peak Gain (dBi)
2400	<b>56.13</b>	<b>1.32</b>
2420	<b>57.21</b>	<b>1.54</b>
2440	<b>58.07</b>	<b>1.72</b>
2450	<b>60.36</b>	<b>1.81</b>
2460	<b>58.06</b>	<b>1.77</b>
2480	<b>57.95</b>	<b>1.53</b>
2500	<b>56.24</b>	<b>1.32</b>





悦尔之声 连接世界

Connecting the world with Swetz Sound

**The End**