

## **OTA TEST REPORT**

**Applicant: TU GAO Communication Equipment Co., Ltd**

**Product: P2201-718**

**Issue Date: 2022.11.25**

**RF Engineer: XU LONG**

TA Technology (Shanghai) Co., Ltd. tested the above equipment in accordance with the requirements in **ANSI/IEEE Std 149-2008**. The test results show that the equipment tested is capable of demonstrating compliance with the requirements as documented in this report.

# ANWEI ANWEI Communication Equipment Co., Ltd

## 一. Test equipment:

<b>CHAMBER</b>	<b>SATIMO Chamber</b>
<b>Wireless Networking Test Set</b>	<b>Agilent 8960 5515C</b>
<b>NETWORK ANALYZER</b>	<b>Agilent 8753D</b>
<b>Comprehensive measuring instrument</b>	<b>CMW500 Agilent8820C</b>
<b>TEMPERATURE</b>	<b>20±2℃</b>
<b>HUMIDITY</b>	<b>50±20%rh</b>

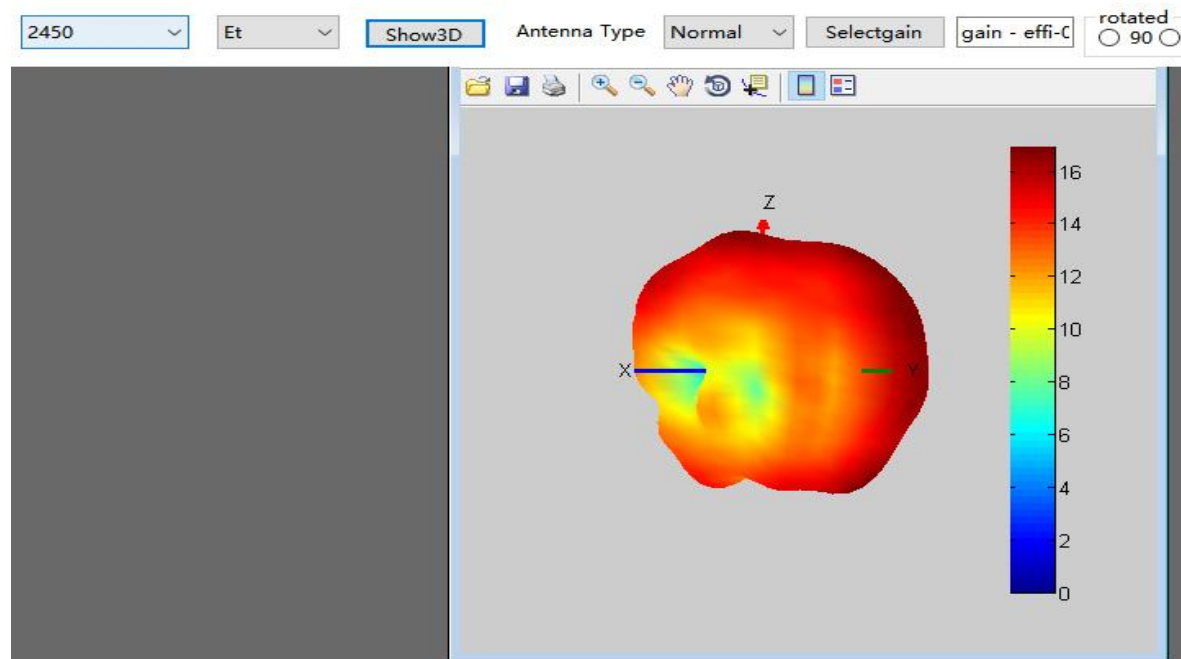


Address: 2nd Floor, East Block, Building 5, HUALIN Industrial Zone, HUALING Road, DALANG Street, LONGHUA District, SHENZHEN

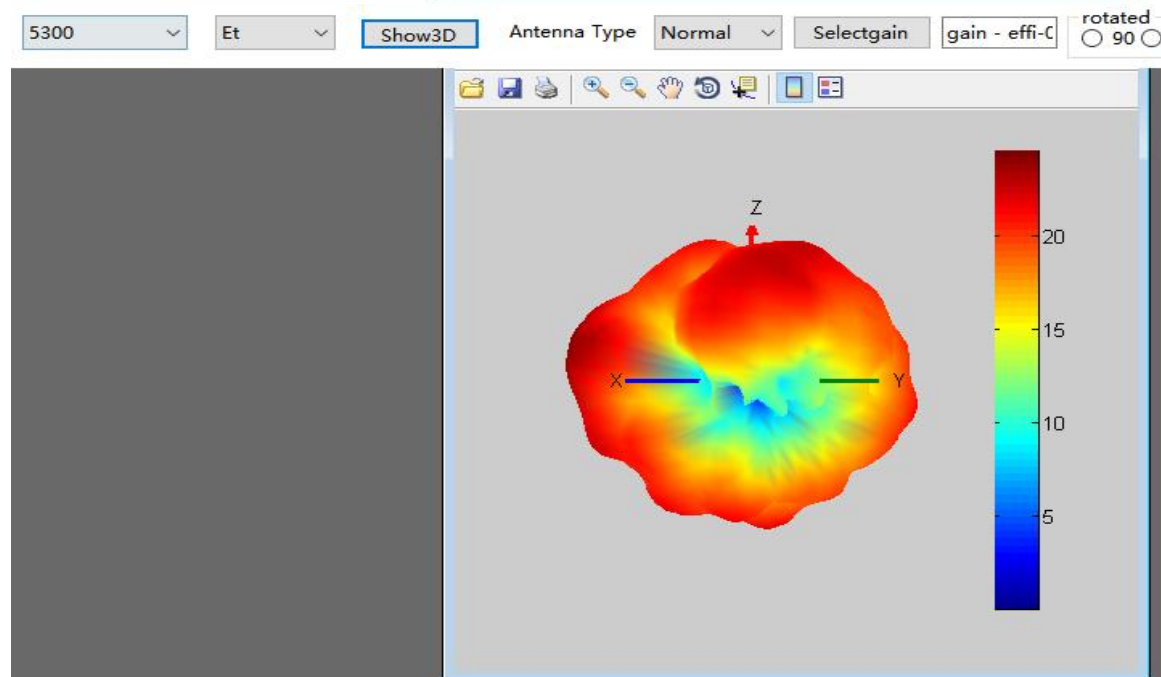
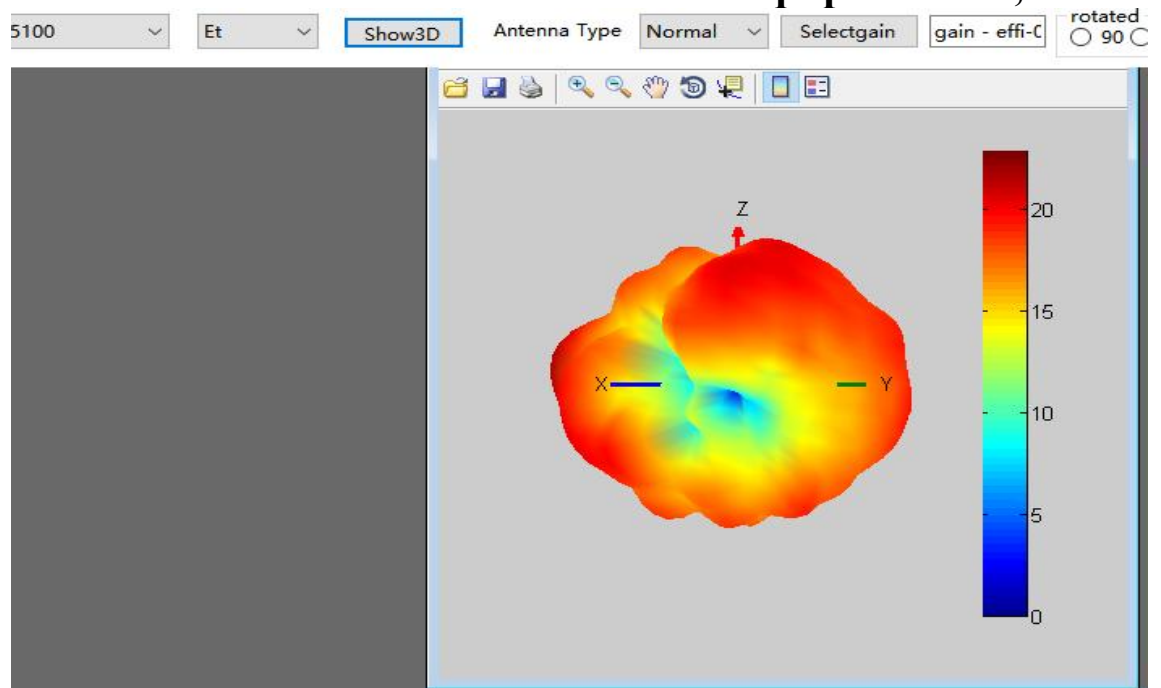
## 2: WIFI Passive Efficiency and Gain:

Model	Test Stat	Frequency (MHz)	Efficiency (dB)	Efficiency (%)	Gain (dBi)	Directivity (dBi)	Note
ESP-ANT D-H	Free Space	2400	-1.97	-19.61	-4.02	39.62	15°
		2450	0.26	-21.78	-3.84	41.28	
		2480	-0.09	-18.63	-3.72	42.42	
		2500	0.18	-19.78	-3.53	44.32	
		5100	-1.03	-23.89	-5.76	26.52	
		5200	0.35	-21.52	-5.53	27.99	
		5300	-1.43	-19.92	-4.66	34.21	
		5400	0.07	-20.21	-4.32	36.98	
		5500	-0.36	-19.78	-4.22	37.87	
		5600	-1.91	-18.16	-3.44	45.26	
		5700	-1.33	-27.67	-4.06	39.29	
		5800	0.35	-24.68	-3.06	49.41	

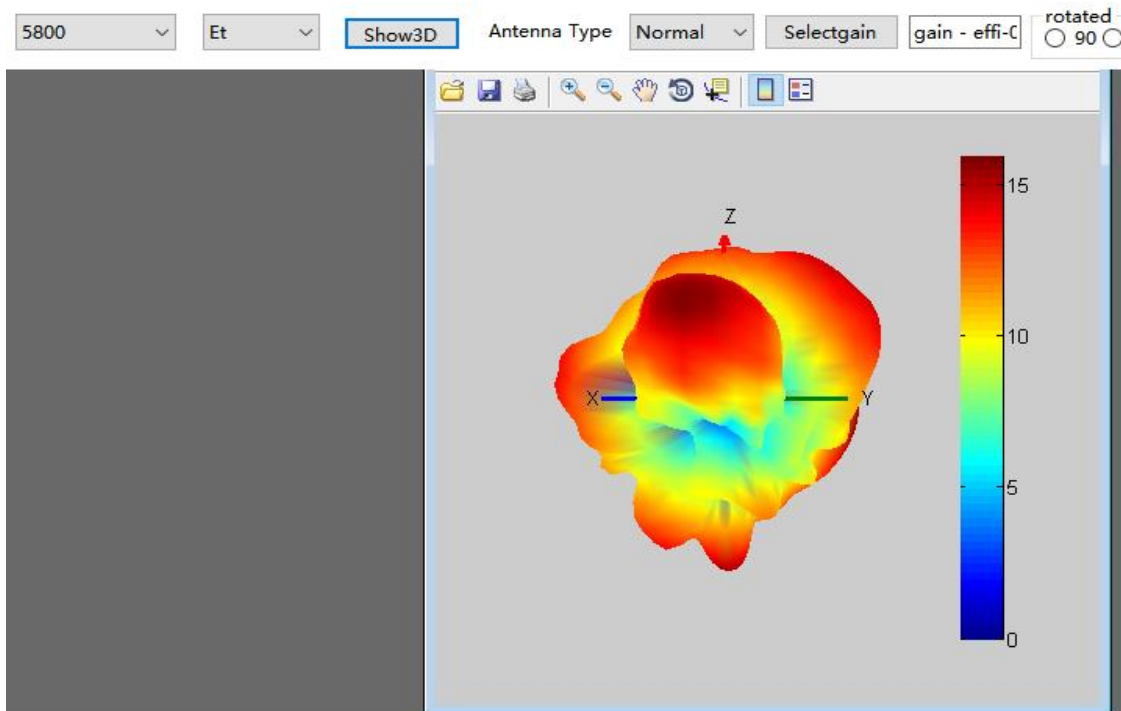
## 3.3-D Apple Chart



# ANWEI ANWEI Communication Equipment Co., Ltd



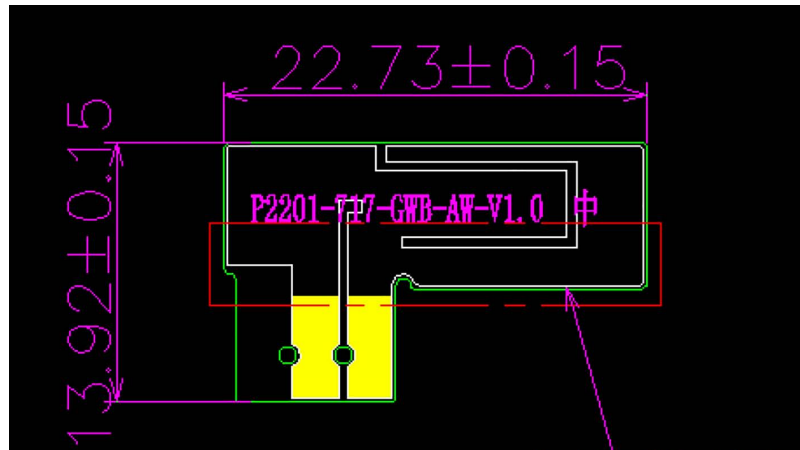
Address: 2nd Floor, East Block, Building 5, HUALIN Industrial Zone, HUALING Road, DALANG Street, LONGHUA District, SHENZHEN



#### 4: Test panel WIFI active test data

Standard	Band	Channel	Frequency	TRP	TIS
WIFI_B	B_11M	1	2412	13.46	-82.12
WIFI_B	B_11M	6	2437	14.57	-82.02
WIFI_B	B_11M	11	2462	13.56	-83.54
WIFI_A	A_54M	36	5180	11.37	-71.68
WIFI_A	A_54M	64	5320	11.52	-71.58
WIFI_A	A_54M	165	5745	11.06	-71.41

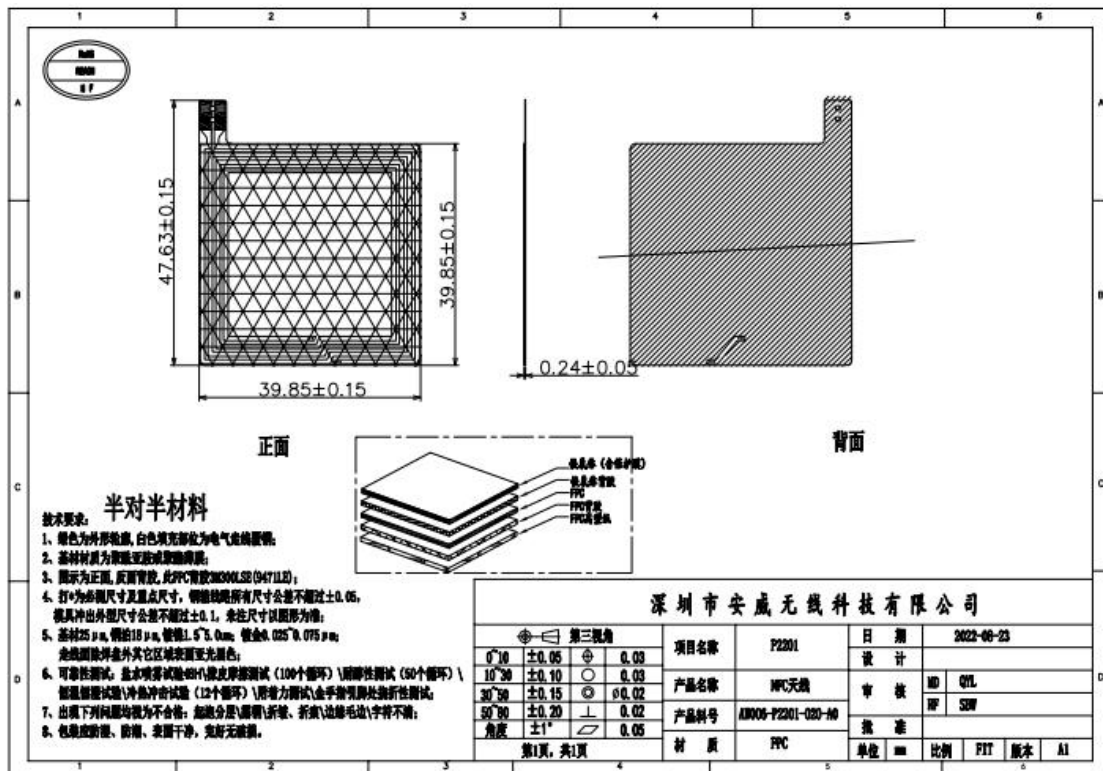
## 5. Antenna Dimensions



## 5: Matching circuit

In the actual debugging, the original matching circuit of the motherboard was not changed, and the performance of the FPC antenna could meet the customer's requirements, so the matching circuit of WIFI remained unchanged.

## 6.Relevant dimensions of NFC antenna



## 7: Summary

Summary This report is based on the antenna electrical performance measured by the mobile phone provided by the customer. Please carefully review it,AW looks forward to your confirmation, thank you for your cooperation.