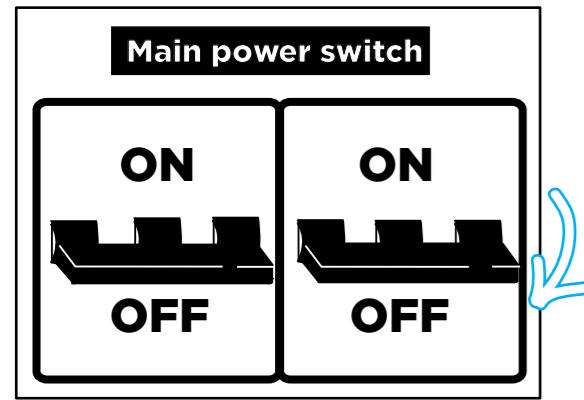
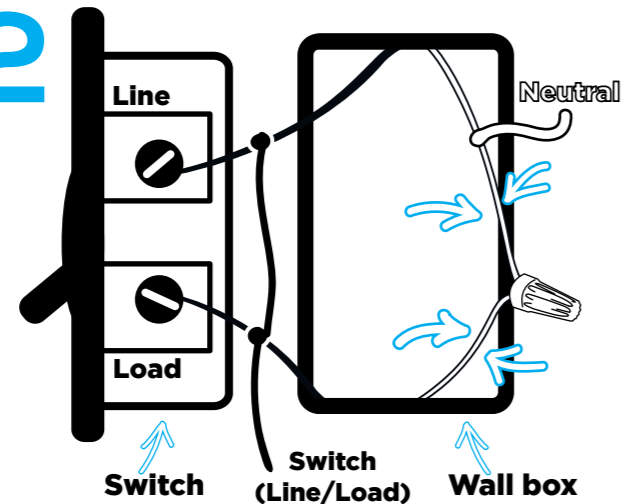
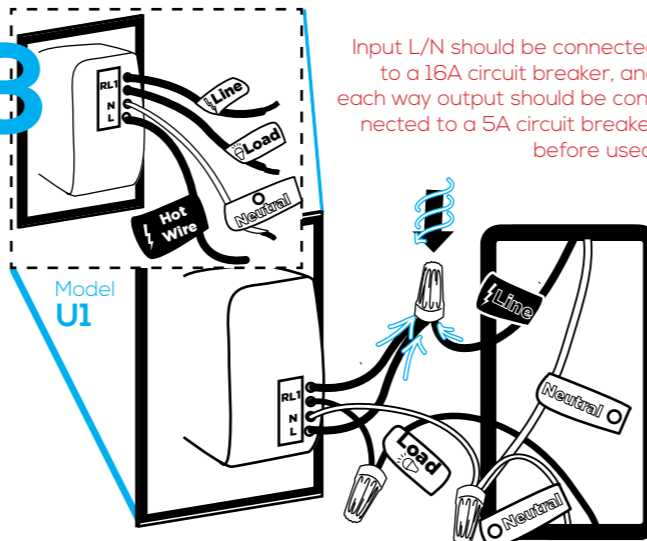


1

Turn off the power at the circuit breaker for the switch you are replacing.

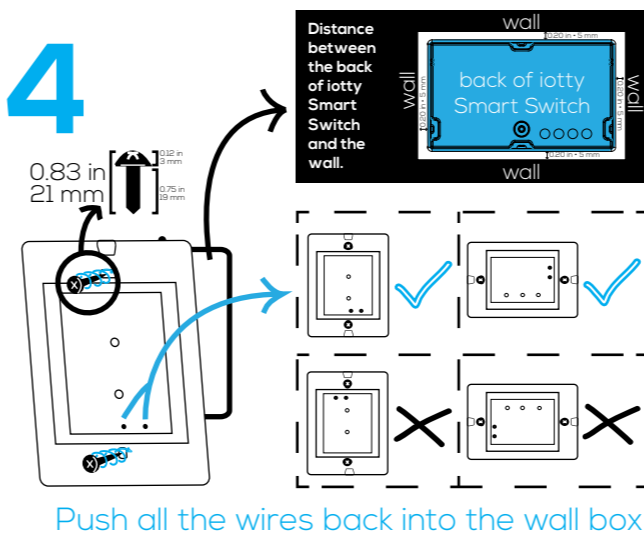
2

Remove your old switch and label your wires. Remember that you **must** have a *Neutral* wire to install iotty Smart Switch. Before to start wiring remove the faceplate from iotty as shown in step 5.

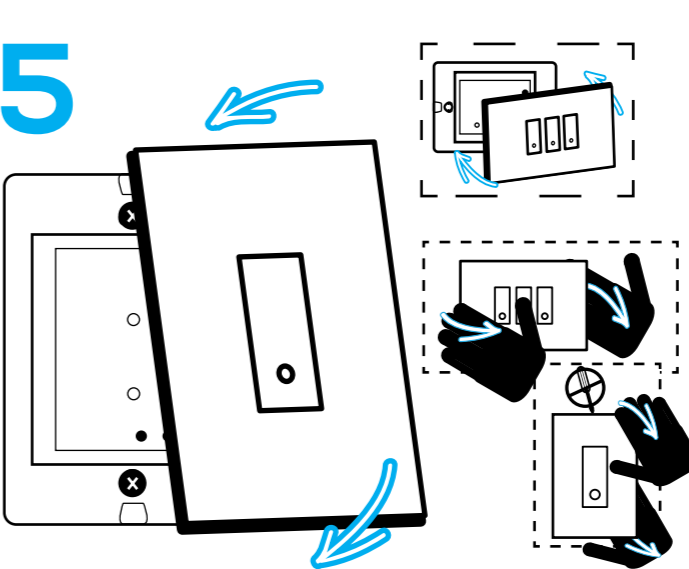
3

Connect Neutral wires together. Each RL has two wires, connect one to the Load and the other to the Hot Wire together with the iotty wire labeled with L. If you have a ground wire, place it into the wall box.

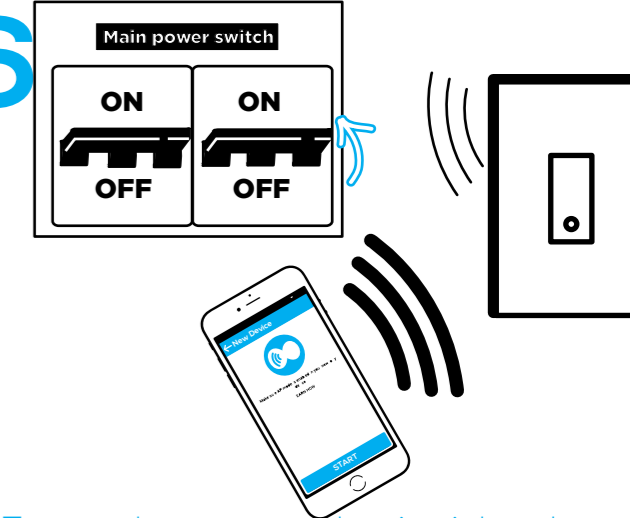
Input L/N should be connected to a 16A circuit breaker, and each way output should be connected to a 5A circuit breaker before used.

4

Push all the wires back into the wall box and try to allow as much space for the switch as possible. Place the iotty Smart Switch into the box and screw in. Place the two black buttons **down** (or **right** if you have multiple gangs)

5

Attach your iotty Smart Switch faceplate. To remove, use your hands to lift the faceplate.

6

Turn on the power at the circuit breaker. Download the iotty app and sign in. Connect to your iotty Smart Switch wifi [IOTTY_serial-number]. Now go to the app and add a new device.

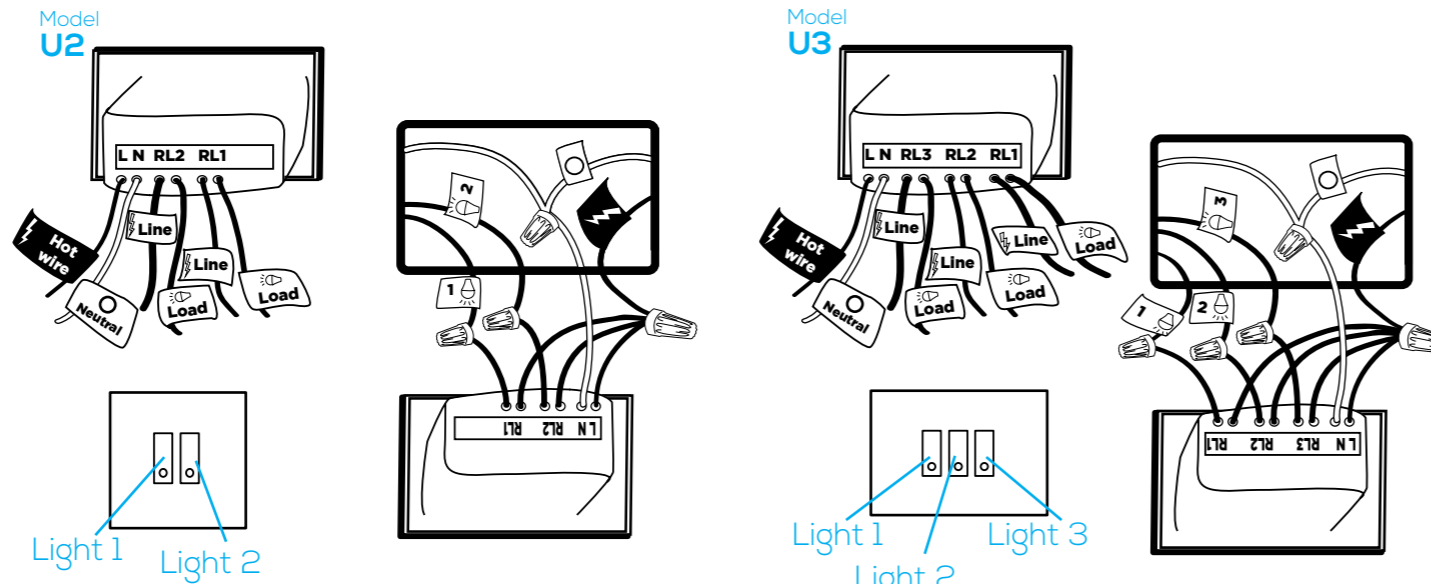
WARNING: Electrical wirings should be done by a professional electrician. Incorrect installation is dangerous or illegal. Please call a professional electrician if you are unfamiliar or uncomfortable with electrical work.

iotty Smart Switch
Model: U1, U2, U3
Input 110 V~
Frequency 60Hz
Max 5A per RL
Ambient temperature: 25°C

more info at:
www.iotty.com/support

IOTTY srl
Via Del Laghetto, 18/20
33080 Porcia (PN) - ITALY
www.iotty.com
iotty@iotty.com

How to install a multiple gang iotty Smart Switch:



Input L/N should be connected to a 16A circuit breaker, and each way output should be connected to a 5A circuit breaker before used.

In case of loads operating at the same voltage than iotty

Turn off the power at the circuit breaker for the switch you are replacing.

Remove your old switch and label your wires.

Remember that you **must** have a *Neutral wire* to install iotty Smart Switch.

Connect the Neutral wires together.

Connect the Hot Wire, labeled with L, with one of the two wires that come out from each RL, together with the Hot Wire from your wall.

Connect each of the other wire of the RL with each load you want to control.

Push all the wires back into the wall box.

Place the iotty Smart Switch into the box and screw in.

Place the two black buttons on the **right**.

Attach your iotty Smart Switch faceplate.

If you want to hide one gang apply the sticker provided on the back of the faceplate.

Turn on the power at the circuit breaker.

Download the iotty app and sign in.

Connect to your iotty Smart Switch wifi [IOTTY_serial-number].

Now go to the app and add a new device.

In case of loads operating at different voltage than iotty

Turn off the power at the circuit breaker for the switch you are replacing.

Remove your old switch and label your wires.

Remember that you **must** have a *Neutral wire* to install iotty Smart Switch.

Connect the Neutral wires together.

Connect the Hot Wire with the line in the wall.

Every RL has two wires, connect one to the *external power supply* (necessary if the load needs different voltage from the Hot Wire),

Connect the other wire of RL to the load.

Push all the wires back into the wall box.

Place the iotty Smart Switch into the box and screw in.

Place the two black buttons on the **right**.

Attach your iotty Smart Switch faceplate.

If you want to hide one gang apply the sticker provided on the back of the faceplate.

Turn on the power at the circuit breaker.

Download the iotty app and sign in.

Connect to your iotty Smart Switch wifi [IOTTY_serial-number].

Now go to the app and add a new device.



WARNING: Electrical wirings should be done by a professional electrician. Incorrect installation is dangerous or illegal. Please call a professional electrician if you are unfamiliar or uncomfortable with electrical work.