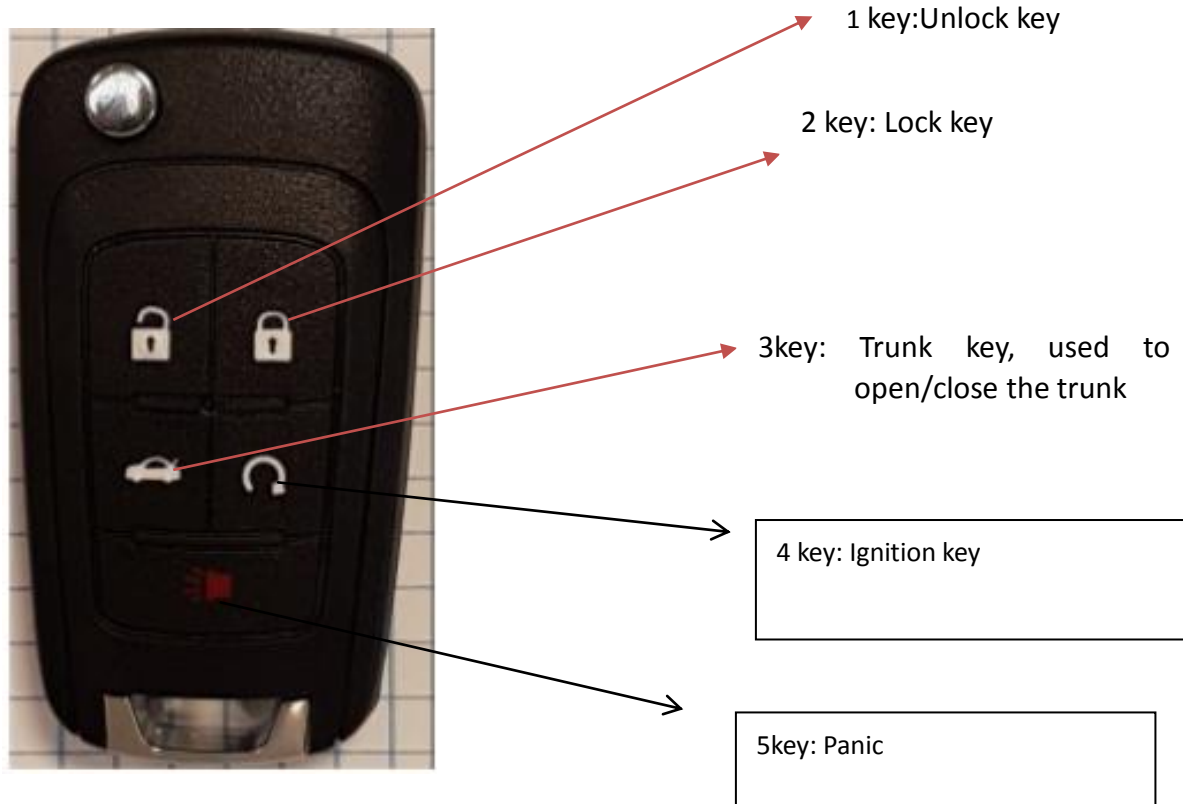


Company: Remote Tech LLC  
Address: 310 ALDER RD,Dover,DE 19904,USA  
Name:Remote Key  
Model: PRX-GPRS5



### Operation instructions

1. After matching the key to the car, press 1 the unlock key for 2 seconds to open the door and press 2 the lock key for 2 seconds to close the door.
2. The ignition key is used to manually unlock and start the car.

### Product parameters

Rated voltage	DC 3V
Working current	<5mA
Operating voltage	1.8V~3.6V
Transmit power	>-20dbm
Key operation force	200±50g
Operating temperature	-5°C +45°C
Stand-by current	<1uA
transmitting frequency	315M±150KHZ
Modulation	ASK
Battery	CR2032
Key durability	1More than 100,000 times

#### FCC COMPLIANCE STATEMENT:

This device complies with part 15 of the FCC Rules. Operation is subject to the following two conditions:

(1) This device may not cause harmful interference, and (2) this device must accept any interference received, including interference that may cause undesired operation. Changes or modifications not expressly approved by the party responsible for compliance could void the user's authority to operate the equipment.

#### IC WARNING

This device contains licence-exempt transmitter(s)/receiver(s) that comply with Innovation, Science and Economic Development Canada's licence-exempt RSS(s). Operation is subject to the following two conditions:

(1) This device may not cause interference.

(2) This device must accept any interference, including interference that may cause undesired operation of the device

#### ADVERTENCIA IC

Cet appareil contient des émetteurs / récepteurs exemptés de licence conformes aux RSS (RSS)d'Innovation, Sciences et Développement économique Canada. Le fonctionnement est soumis auxdeux conditions suivantes :

(1) Cet appareil ne doit pas causer d'interférences.

(2) Cet appareil doit accepter toutes les interférences, y compris celles susceptibles de provoquer un fonctionnement indésirable de l'appareil.