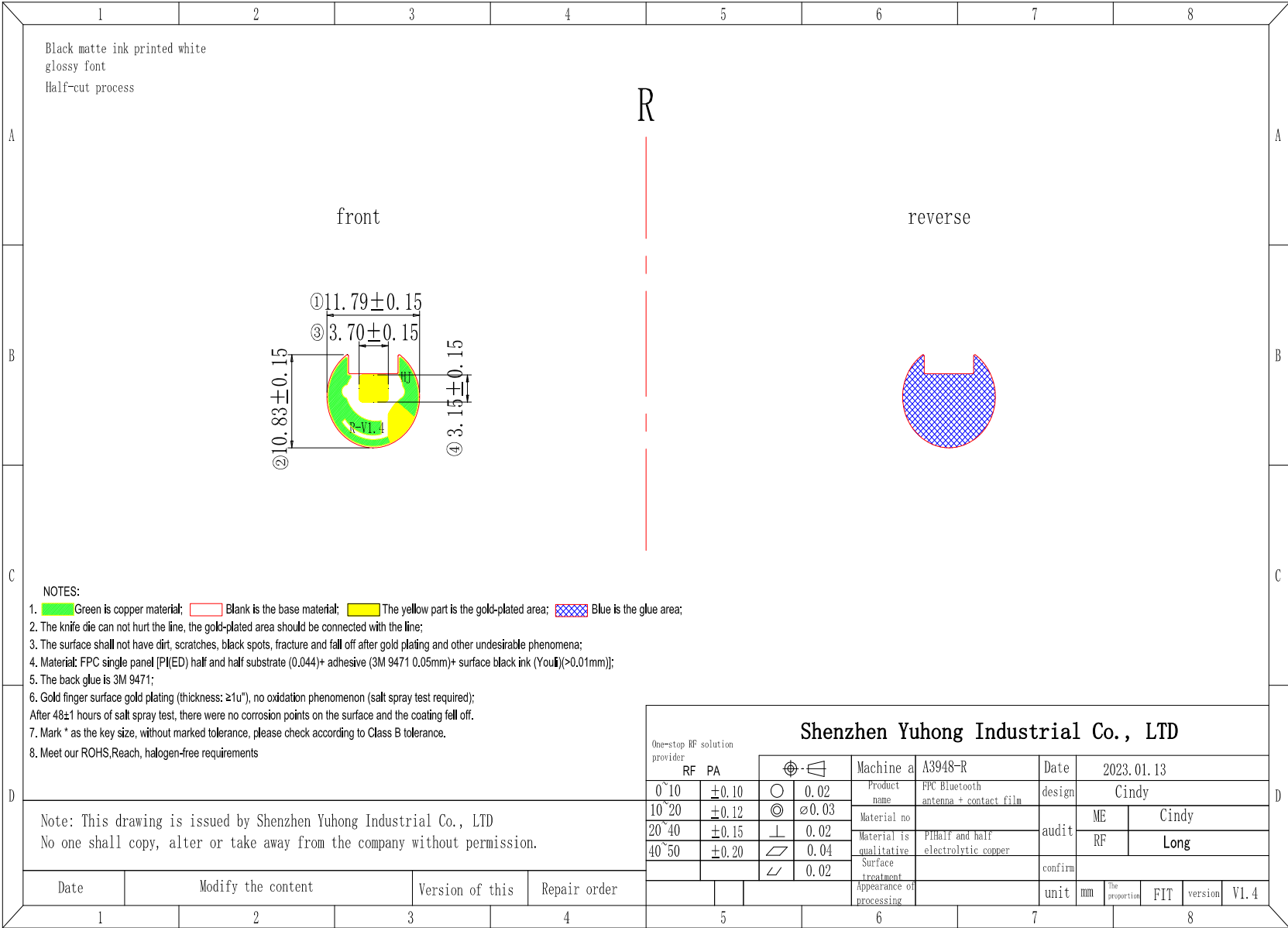
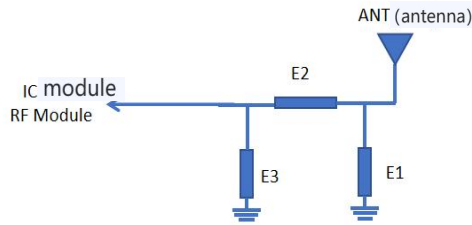


2、Product drawing



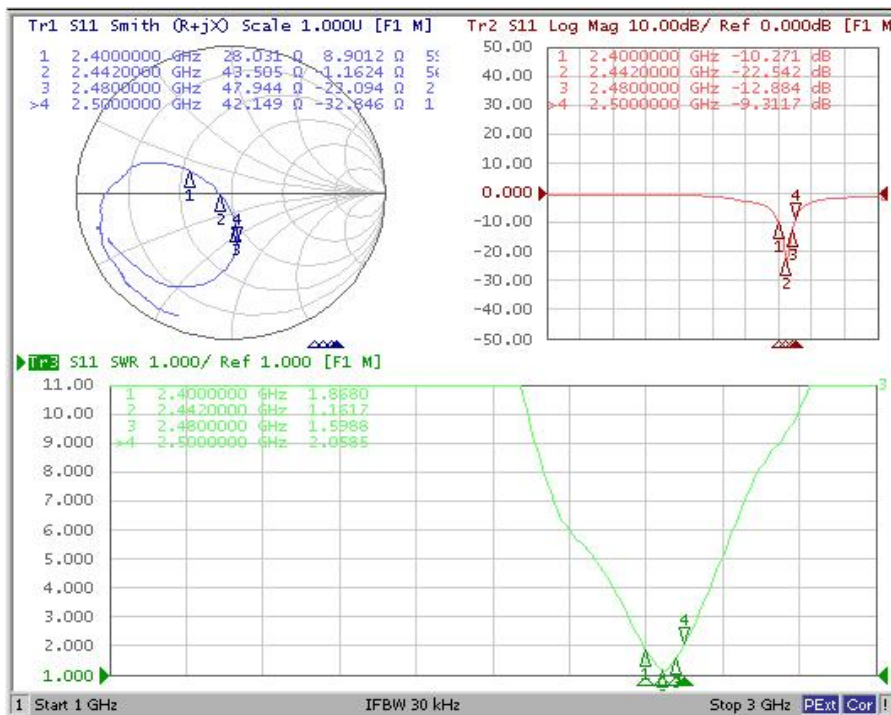
3、 Specification of electrical and mechanical properties

3.1、 Match the circuit diagram



R	
Main Antenna	
Element	
E1 (0201)	N/C
E2 (0201)	0Ω
E3 (0201)	2.4PF

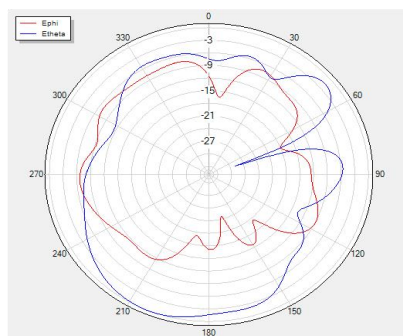
3.2 S11parameter



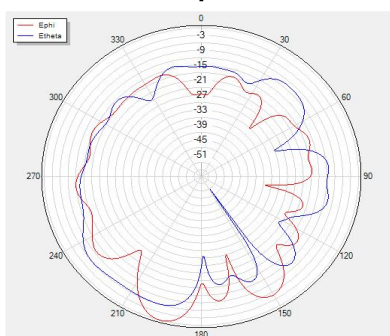
3.3 Passive efficiency

R				
	FS		Head&ear	
	gain(dBi)	efficiency (%)	gain(dBi)	efficiency (%)
2400	-1.42	25.89	0.01	12.18
2410	-1.46	26.12	0.34	12.51
2420	-1.5	27.05	0.53	12.7
2430	-1.55	27.46	0.6	12.64
2440	-1.62	27.61	0.55	12.41
2450	-1.62	28.03	0.53	12.3
2460	-1.57	28.6	0.51	12.23
2470	-1.53	27.11	0.49	12.1
2480	-1.5	26.75	0.46	11.96
2490	-1.46	26.45	0.42	11.76
2500	-1.59	26.05	0.32	11.42

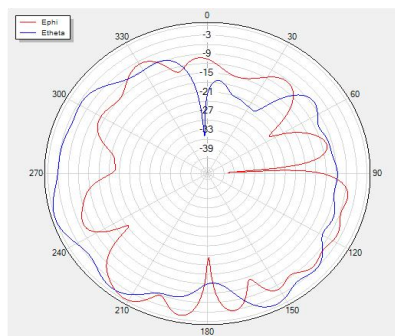
Theta=90 freq=2400MHz



Phi=90 freq=2400MHz



Phi=0 freq=2400MHz



3.4 Active data

R				
	channel	TRP (dbm)	TIS (dbm)	
Free space	0	3.59	-88.48	
	39	4.34	-89.92	
	78	4.16	-89.97	
	channel	TRP (dbm)	TIS (dbm)	
1st generation head	0	-3.5	-80.75	
	39	-3.35	-82.33	
	78	-3.74	-81.61	

5. Environmental treatment



Horn wire length to do 20mm, twisted wire 4-5 laps after assembly



The length of the battery wire is 15mm, and the twisted wire is assembled after 3-4 turns